

USGS: Agency Update



Photo: D. Hutchinson



Deborah Hutchinson
AICC Meeting
December 8, 2009
Seattle, WA

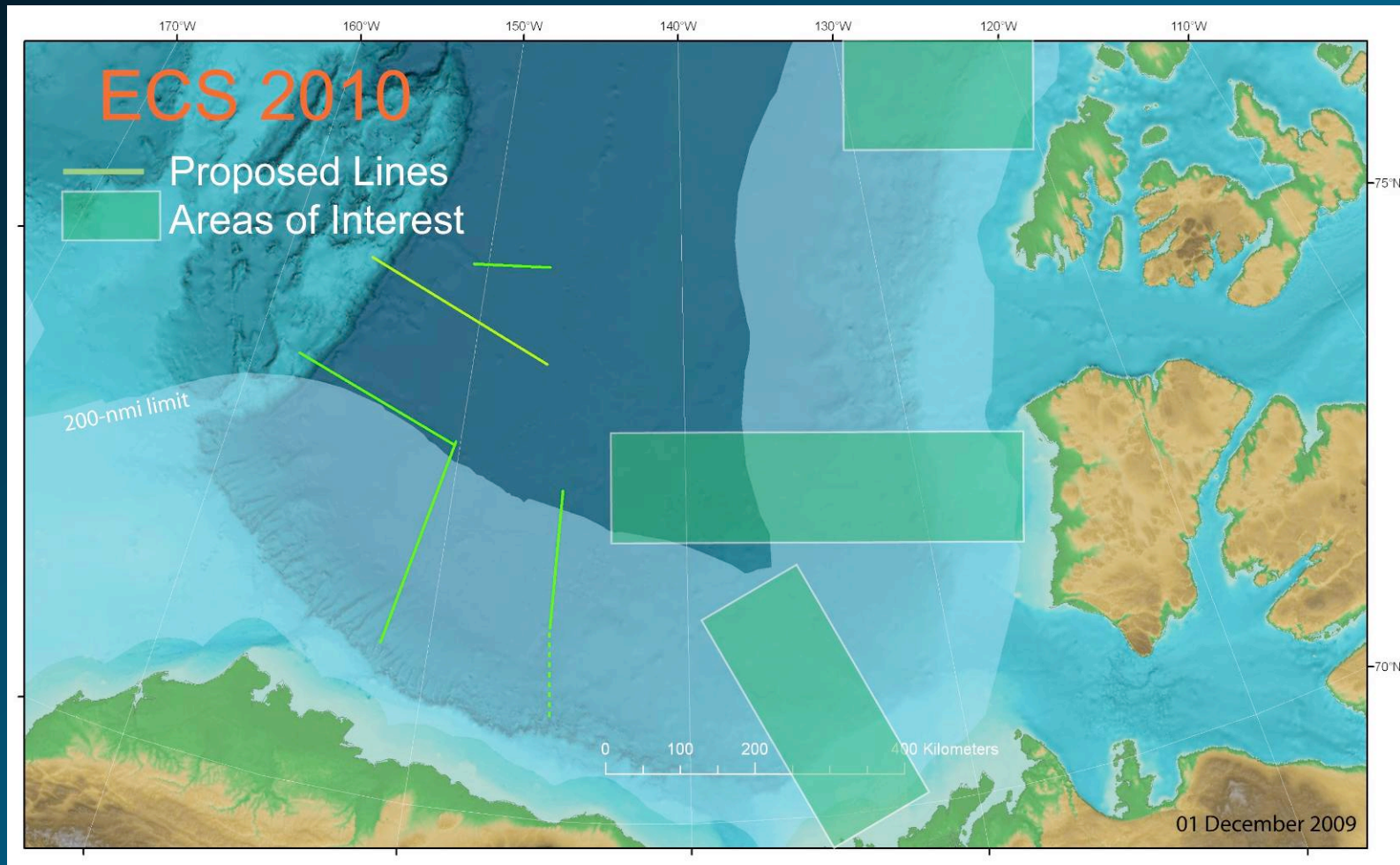


2010 ECS Plans

- Last year of two-ship work
- CCGS Louis S. St-Laurent –
42 days, starting 5 Aug, Kugluktuk
Jon Childs, U.S. liaison
- USCGC Healy
32 days, starting 2 Aug., Dutch Harbor
Chief Sci - TBD
- Same seismic equipment, same
experimental design
- Operate in US EEZ

Photo: J. Biggar

2010 U.S. Tracks and Possible GSC Areas of Interest



U.S. EEZ Seismic Lines

- 2 Lines – connect to existing seismic data
- Ice conditions will determine if two ships required
- Eastern line
 - 300 km long (~40 hours)
 - shallowest water ~2500 m
 - closest approach to land ~120 km
- Western Line
 - 285 km long (~39 hours)
 - shallowest water ~1800 m
 - closest approach to land ~110 km
- Require EA and IHA
 - USGS lead agency
 - Contracted with LGL
 - NOAA/OAR and USCG cooperating agencies for EA
 - Preliminary meeting with NMFS/PR and USFWS 3 Dec. 2009

Next Steps

- Contact AEWG (Dec.)
Harry Brower
- Contact NS Borough (Dec.)
Craig George, Robert Sudam, Richard Glenn
- Continue meetings with NMFS and USFWS
- Annual GSC/USGS meeting (Winter)
- Finalize USCGC Healy Chief Scientist (Jan.)
- Arctic Ocean Open Water meeting (Anchorage)

