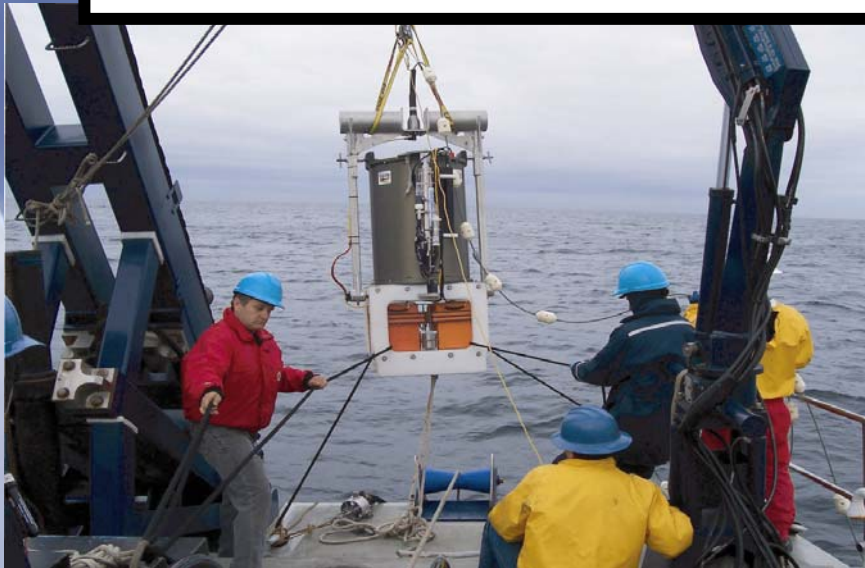




2009 RVTEC Meeting, Seattle, WA

NSF Report





FY 2010 Budget



- The NSF Appropriation for FY 2010 has not been passed. NSF is currently operating under a Continuing Resolution which runs through...
- In the President's request for 2010, we've heard anywhere from a 6% to a 9% increase for NSF. It is unclear what amount will trickle down to us.
- Pressures from the deficit, however, will likely make for a very austere 2011
- Not looking for funding a lot of SSSE/OI in 2010



American Recovery and Reinvestment Act (ARRA)



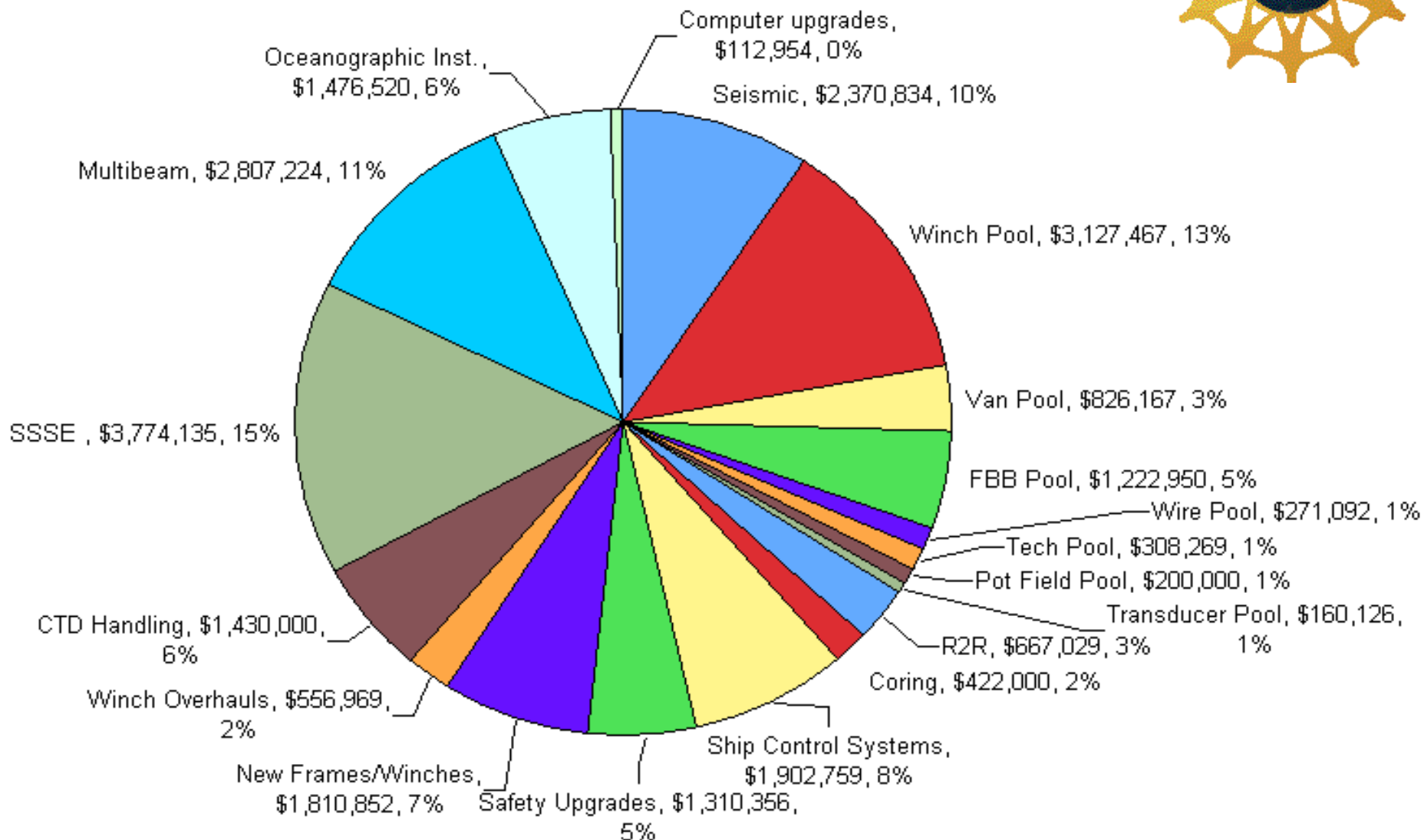
ARRA Spending (3.3 Billion for NSF)

- 148M for ARRV
 - Vessel is pre paid
 - Includes Project Management
 - Total Project cost of 200M
 - Includes contingency
- 20M for Ship Ops
 - Allowed for funding over 500 additional NSF ship days (>50% global)
- 17M for SSSE/OI
 - Investment in Aging Fleet Infrastructure
 - Over 3M for Winch Pool
 - 2.8M for Multibeam Upgrades and new installations
 - 2.3M for Seismic Equipment



2009 Spending Breakdown (24.8M)

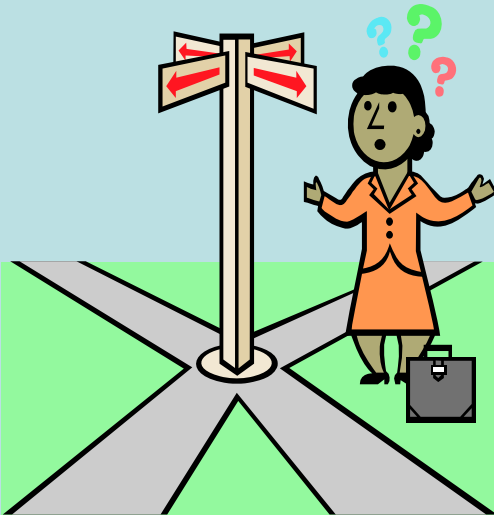
17M: ARRA; 7.8M: Core



New Initiatives in 2010

• R2R

- Funded as a long term program; Continuing Grant for 5 years
- Letter asking for Fleet-wide participation was endorsed by UNOLS Council
- Onus is on this group to make this work

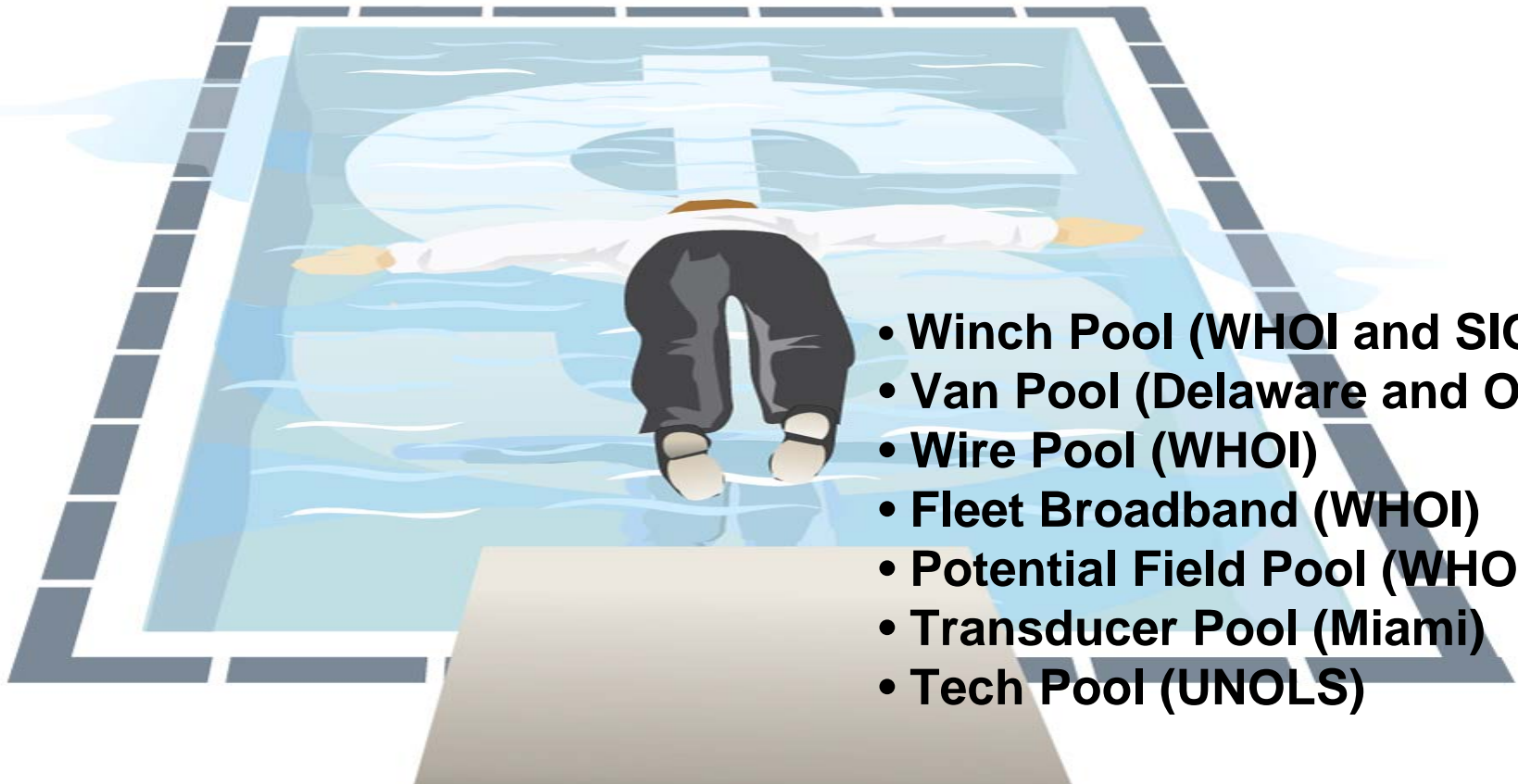


- **UNOLS**
- New UNOLS Position established:
Technical Support Manager
 - **Alice Doyle** has been selected to manage the 2-year pilot program
 - Will work for Jon Alberts in the UNOLS office

• Further Investment into Pooled Resources

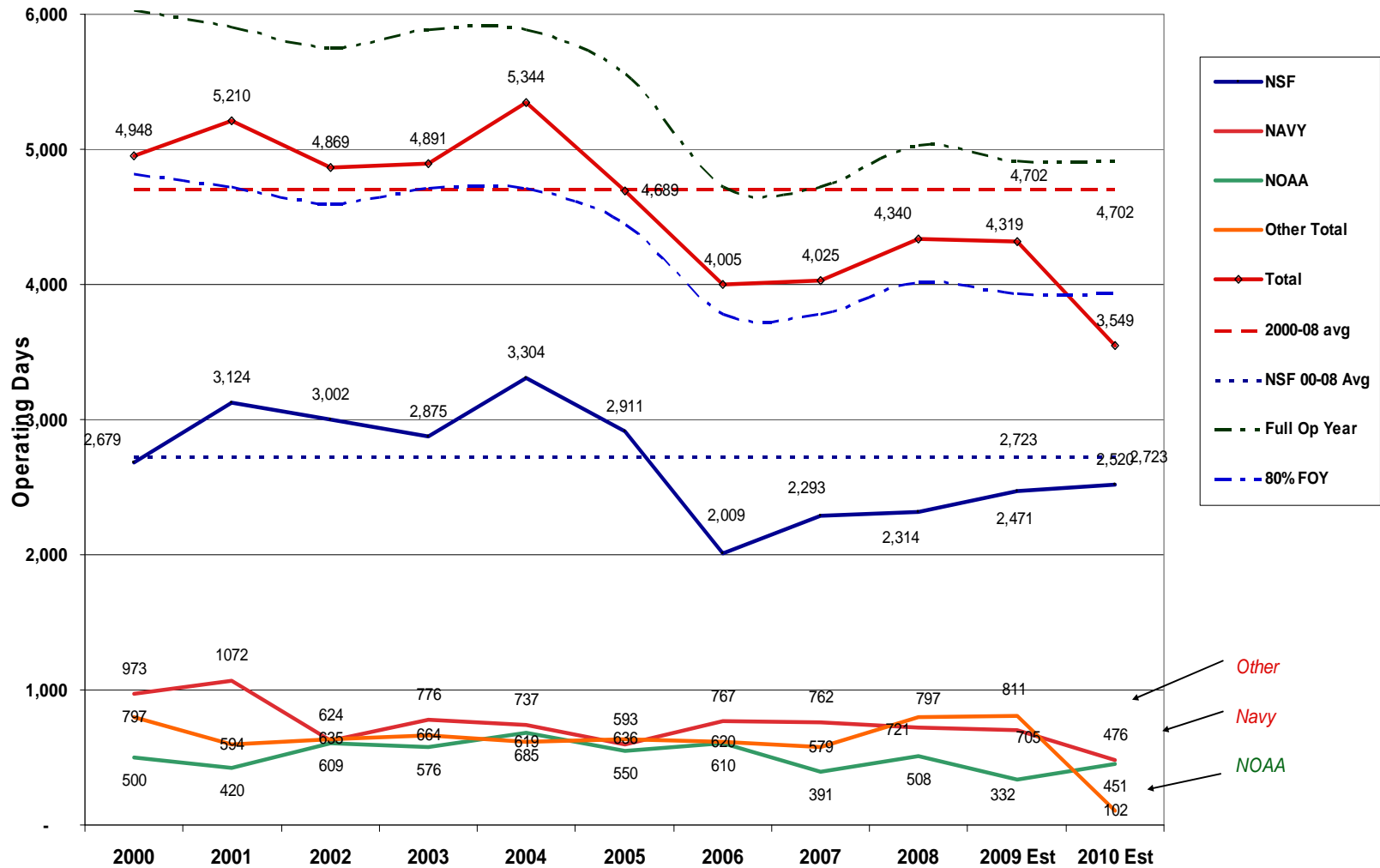
Academic Fleet Shared Use Pools

- Cuts costs by allowing for quantity (group) purchases
- Focuses responsibility on one group for maintenance and scheduling
- Allows for better standardization of common resources
- Relieves individual institutions from duplicating efforts
- Includes salary for Managers of pools
- Includes funding for sparing, maintenance and shipping of resources
- Paid for through a day rate or directly from Program

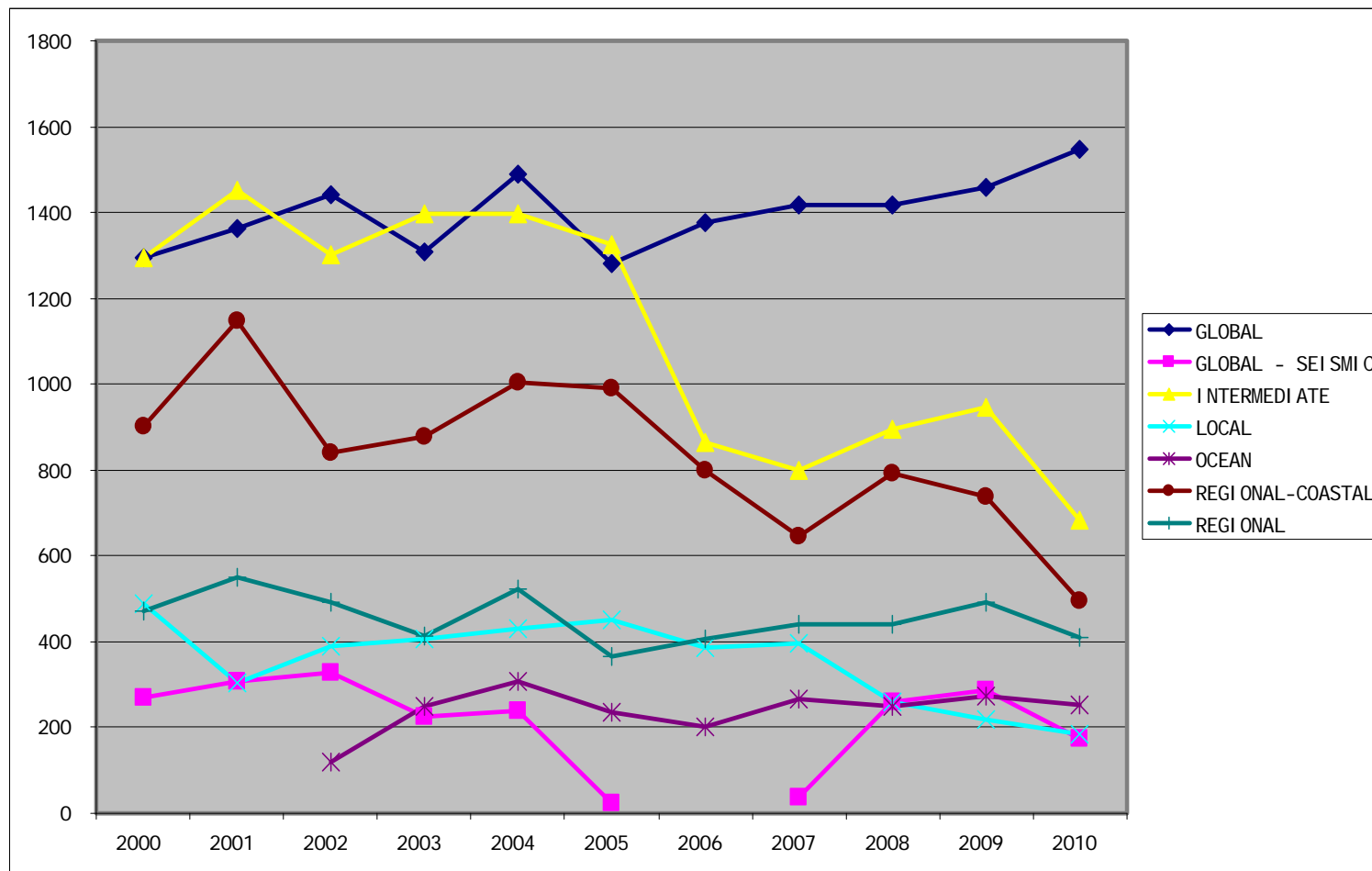


- Winch Pool (WHOI and SIO)
- Van Pool (Delaware and OSU)
- Wire Pool (WHOI)
- Fleet Broadband (WHOI)
- Potential Field Pool (WHOI)
- Transducer Pool (Miami)
- Tech Pool (UNOLS)

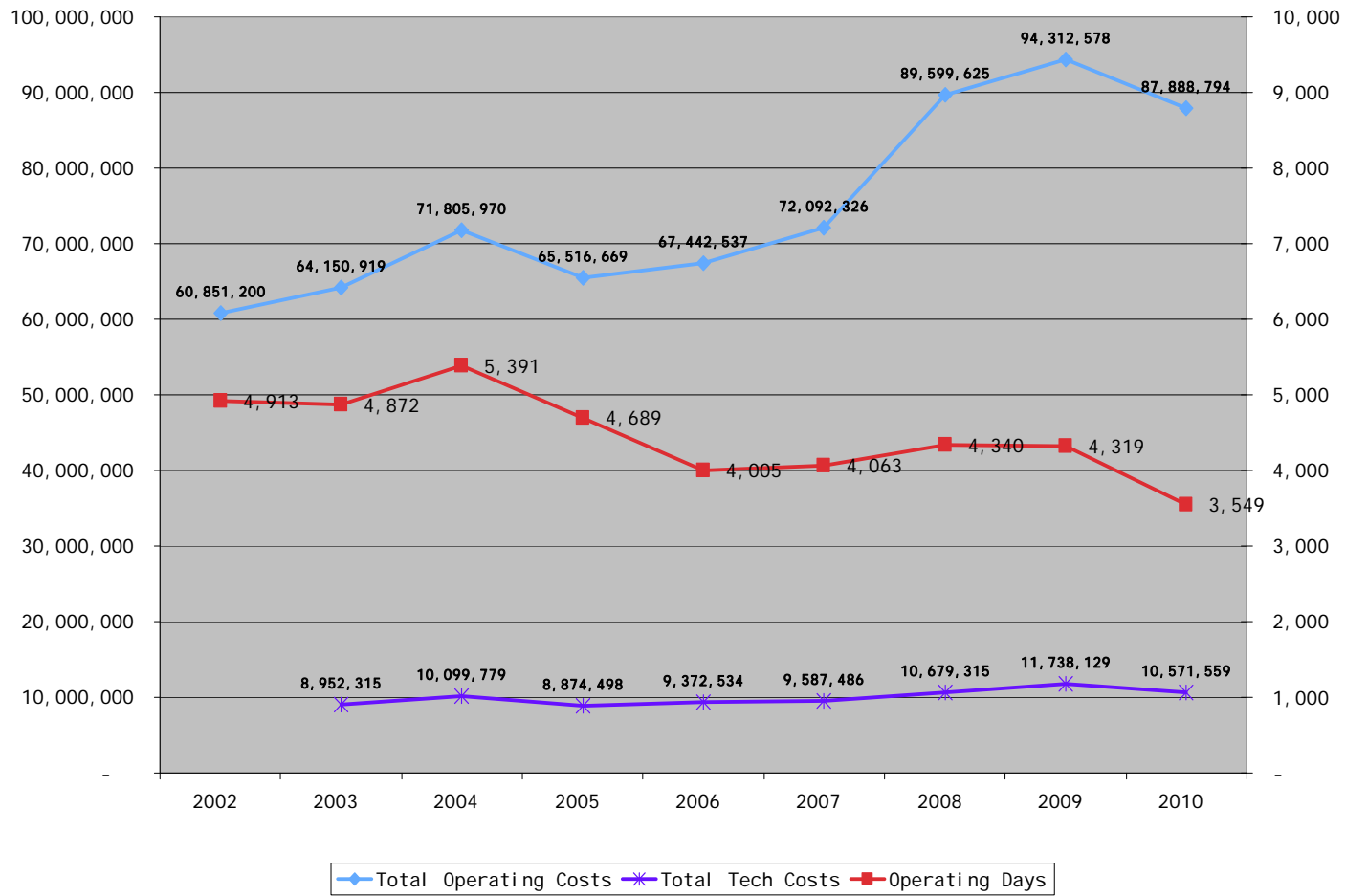
UNOLS Fleet Utilization (2000 - 2010)



FLEET USAGE PROFILE 2000 - 2010



Cost Trends and Operating Days, 2002-2010



SHIP OPERATIONS FUNDING BY AGENCY, 2010

