

*Marcus Langseth Science Oversight Committee
Chair's Remarks to UNOLS National Meeting
NSF
October 2009*



MLSOC Activities

- Bi-annual meetings
 - Last meeting August 2009, Denver:
 - “Future of Langseth” workshop plan
 - Next meeting: pre-AGU, San Francisco
- Interactions with PI's
 - Post-cruise “debrief” with Chief Scientists
 - Available for pre-cruise planning questions
- Interface with operator (LDEO):
 - Requesting and monitoring improvements
- Membership rotation:
 - Staggered rotations beginning ~Jan. 2010
 - Call for nominations going out

Langseth Successes

- Ten cruises so far (eight projects); all successful
- First multi-streamer 3D cruise summer 2008
- Long 2D streamer (8 km)
- High-resolution source
- Quality shipboard technical staff



Cruises to Date

2008

1. Costa Rica I/Holbrook (Feb-March)
2. Costa Rica II/Holbrook (March-April)
3. EPR/McGuire (April-May)
4. EPR 3D/Mutter (June-Aug)

2009

5. Lau Basin/Bohnenstiel (Jan)
6. Lau Spreading Center/Wiens (Jan-March)
7. Taiwan I/McIntosh (April)
8. Taiwan II/McIntosh (May-June)
9. Taiwan III/McIntosh (June-July)
10. Juan de Fuca/Toomey (Aug-Sept)

Future Operations

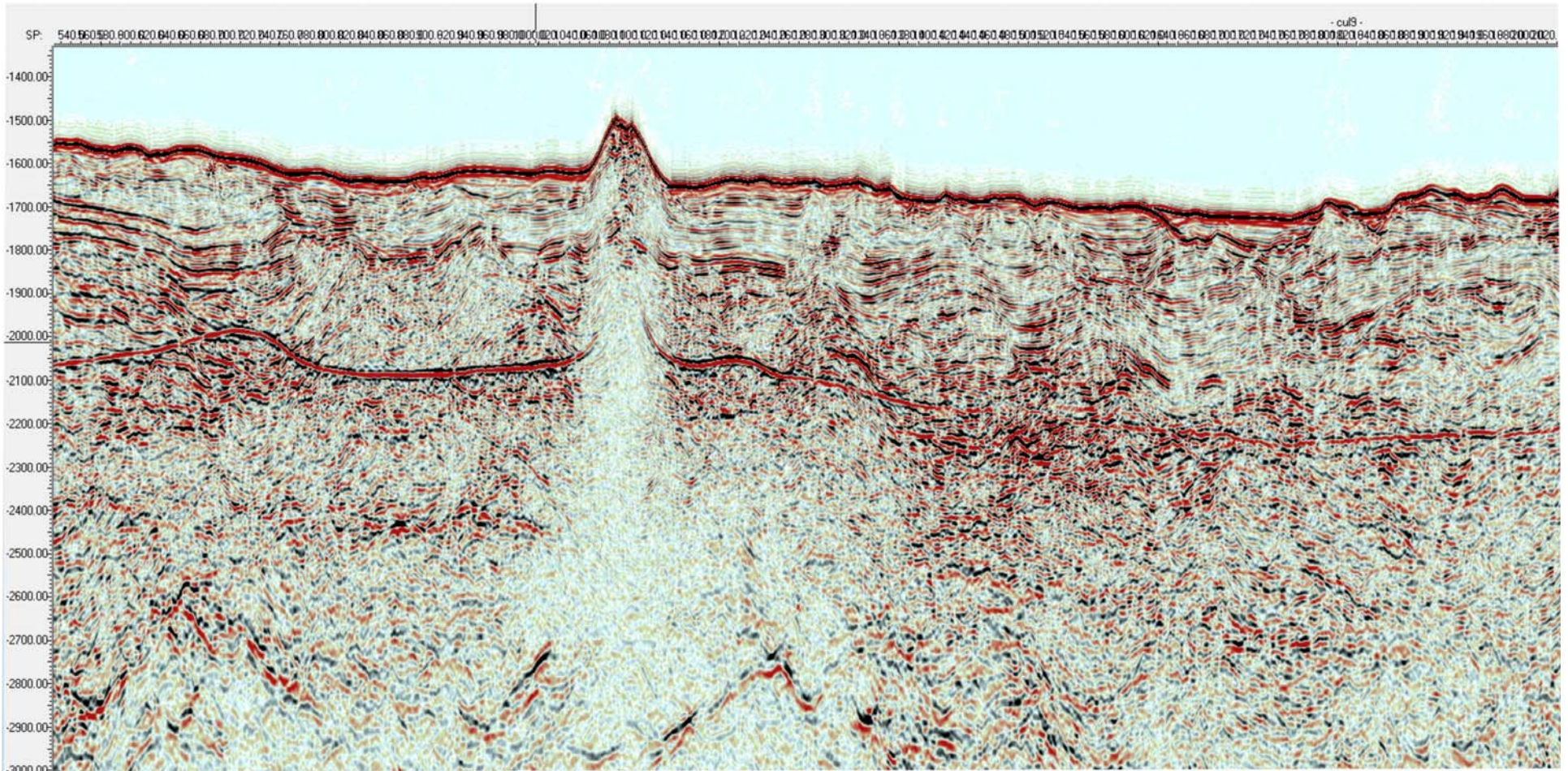
2010 LOI:

1. Marianas/Wiens (47 days)
 2. Ontong Java/Korenaga (50 days)
 3. Aleutians/Shillington (37 days)
- ~173 days scheduled (89 funded,84 pending)
 - long transits

2011: Only 2 proposals in system so far

Langseth Successes

Mound Culebra Line 9: Prestack Depth Migrated



"Fantastic cruise. Memorable. Lots of respect for the ship and its personnel."
- Doug Toomey, Chief Scientist, MGL09-09.

Langseth Challenges

- Expensive (\$84K/day 3D, \$67K/day 2D)
- Few projects funded (~4/year)
- Long transits (increases day rate)
- Long waits for ship access
- Few young investigators (shrinking community)
- Continued permitting issues (touch-and-go)
 - Taiwan: PRC/State Dept. permitting
 - Juan de Fuca: Canadian environmental groups

QuickTime™ and a
TIFF (LZW) decompressor
are needed to see this picture.

Workshop, March 2010: "Challenges and Opportunities in Marine 3D and 2D Seismology"

Holbrook and Kent, co-conveners

Incline Village, Nevada

1. What are exciting science opportunities that, over the next decade, will require a healthy *Langseth* facility?
2. How can process of soliciting, evaluating, funding, and scheduling work on *Langseth* be improved?

Build community consensus on:

- Science opportunities ("glossy brochure")
- Expanding user base and access to *Langseth*
- Long-term forecasting of operation areas
- New models of science planning and proposal evaluation
- Improving access to, and impact of, marine seismic data