

Safety Statistics and Post Cruise Assessments

Report to RVOC
April 14, 2009



UNOLS Safety Statistics

2008 Reports



An accident waiting to happen?

You were perfect
in 2008....

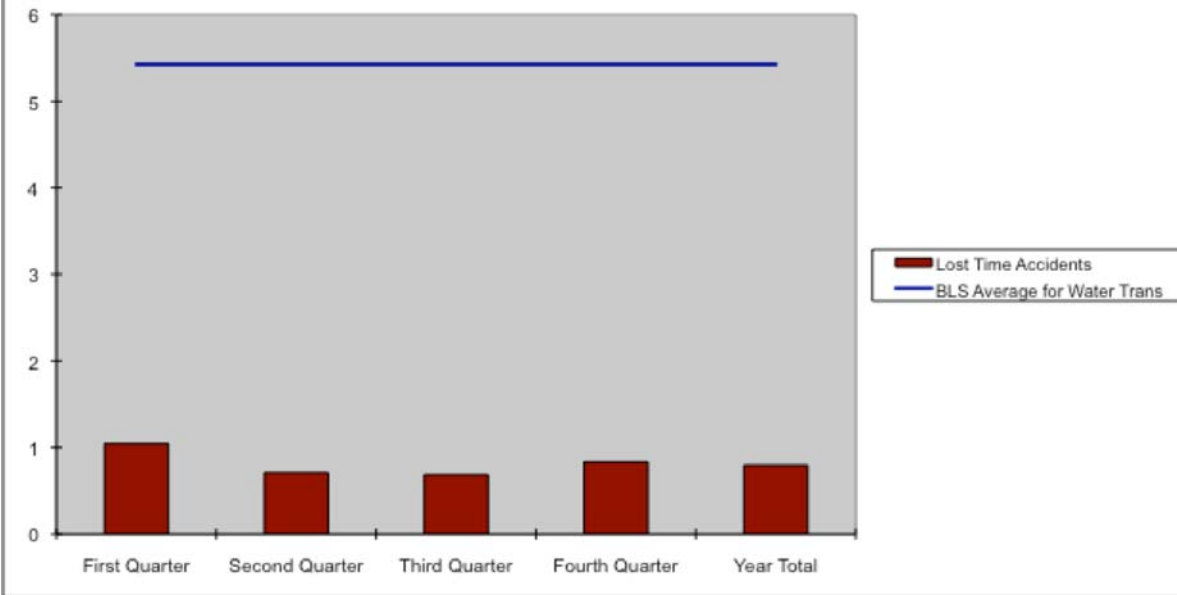


Because Laura would
not let you off the
hook!

2008 RVOC Safety Statistic Reports Received				
Click on the link below to complete reports				
http://www.unols.org/committees/rvoc/rvoc_only/safetyrept.asp				
Quarter Reported	2008-1st	2008-2nd	2008-3rd	2008-4th
Atlantic Explorer	X	X	X	X
Atlantis	X	X	X	X
Blue Heron	X	X	X	X
Cape Hatteras	X	X	X	X
Clifford A. Barnes	X	X	X	X
Endeavor	X	X	X	X
Hugh R. Sharp	X	X	X	X
Kilo Moana	X	X	X	X
Knorr	X	X	X	X
Marcus Langseth	X	X	X	X
Melville	X	X	X	X
New Horizon	X	X	X	X
Oceanus	X	X	X	X
Pelican	X	X	X	X
Point Sur	X	X	X	X
Robert Gordon Sproul	X	X	X	X
Roger Revelle	X	X	X	X
Savannah	X	X	X	X
Seward Johnson	X	X	X	X
Thomas G. Thompson	X	X	X	X
Urraca	X	X	X	
Walton Smith	X	X	X	X
Wecoma	X	X	X	X
Total Ships Reported	23	23	23	22
Total Ships	23	23	23	22
% of Ships Reported	100%	100%	100%	100%



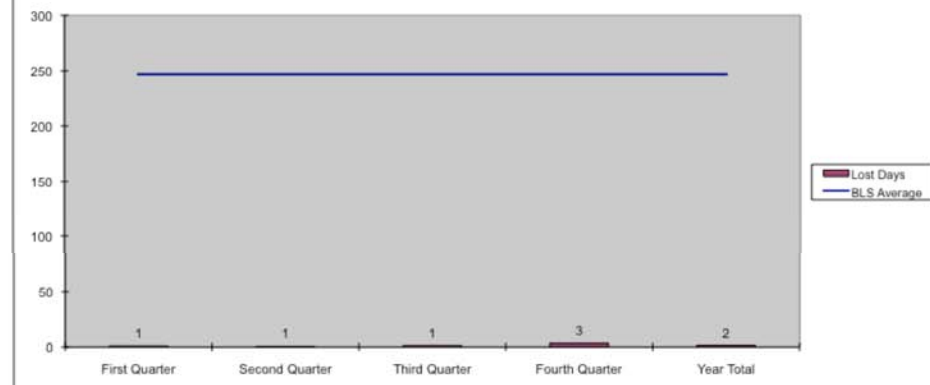
UNOLS 2008
Lost Time Accidents
 Per 200,000 hours or 100 F-T Employees



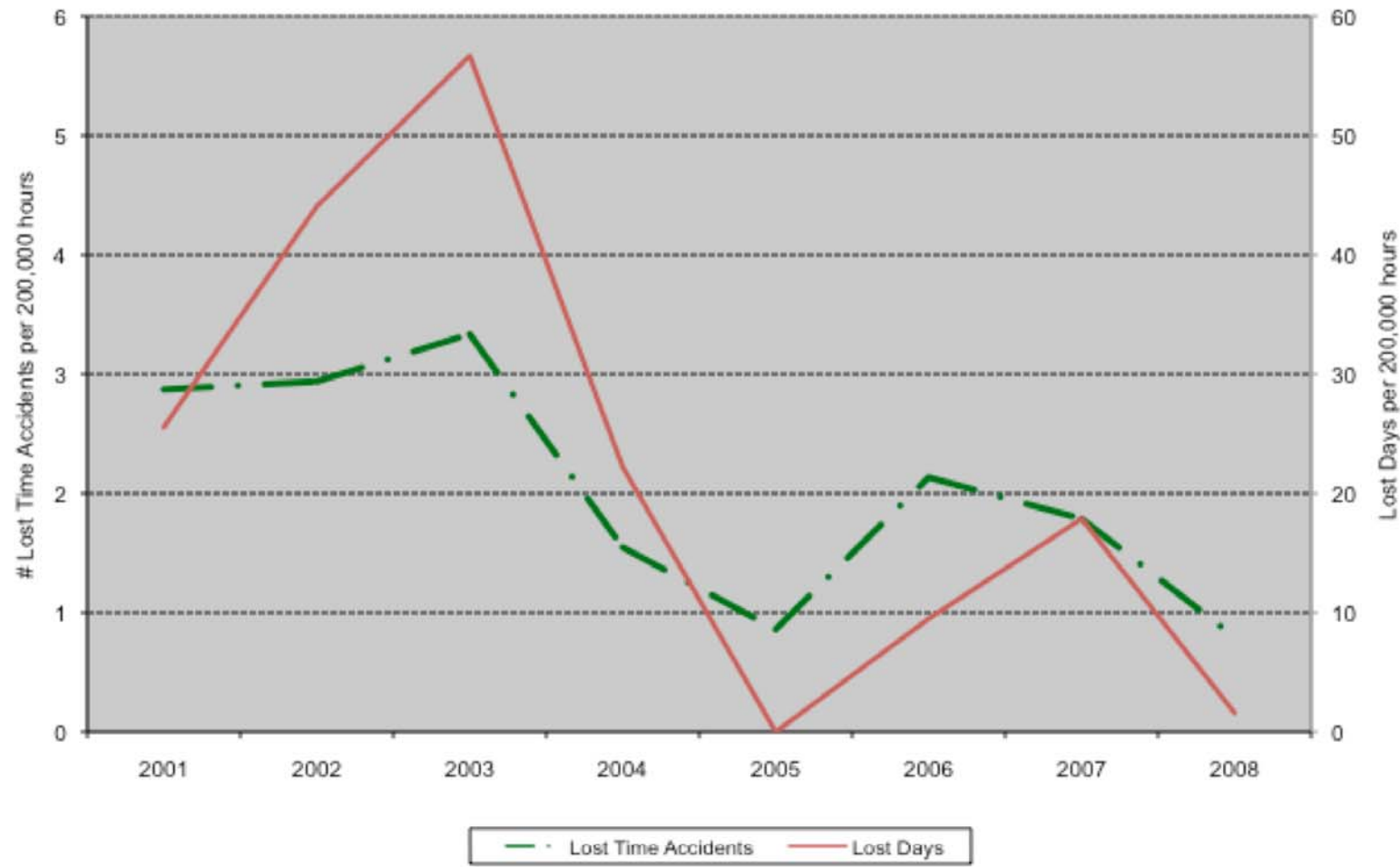
One or fewer lost time accidents per 200,000 hours!

Average two lost days due to accidents per 200,000 hours!

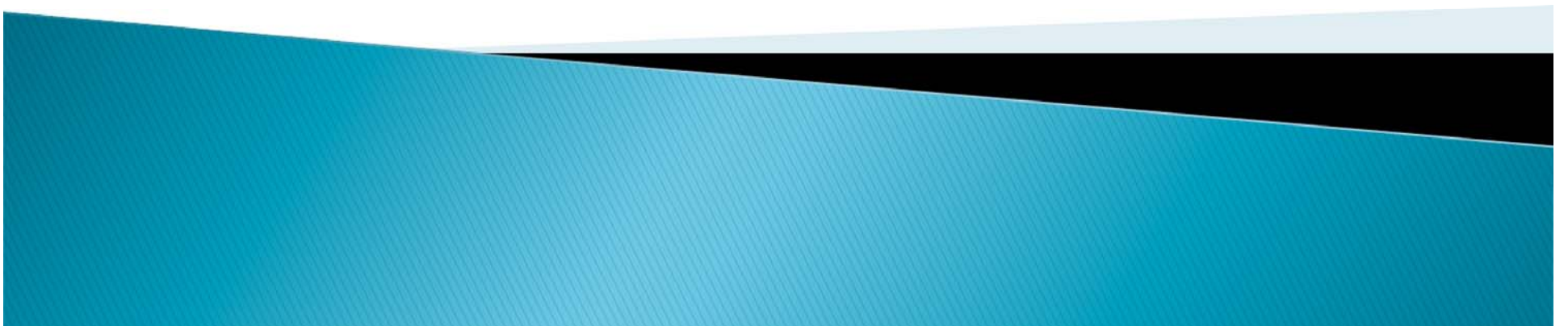
UNOLS 2008
Total Lost Days
 Per 200,000 hours or 100 F-T Employees



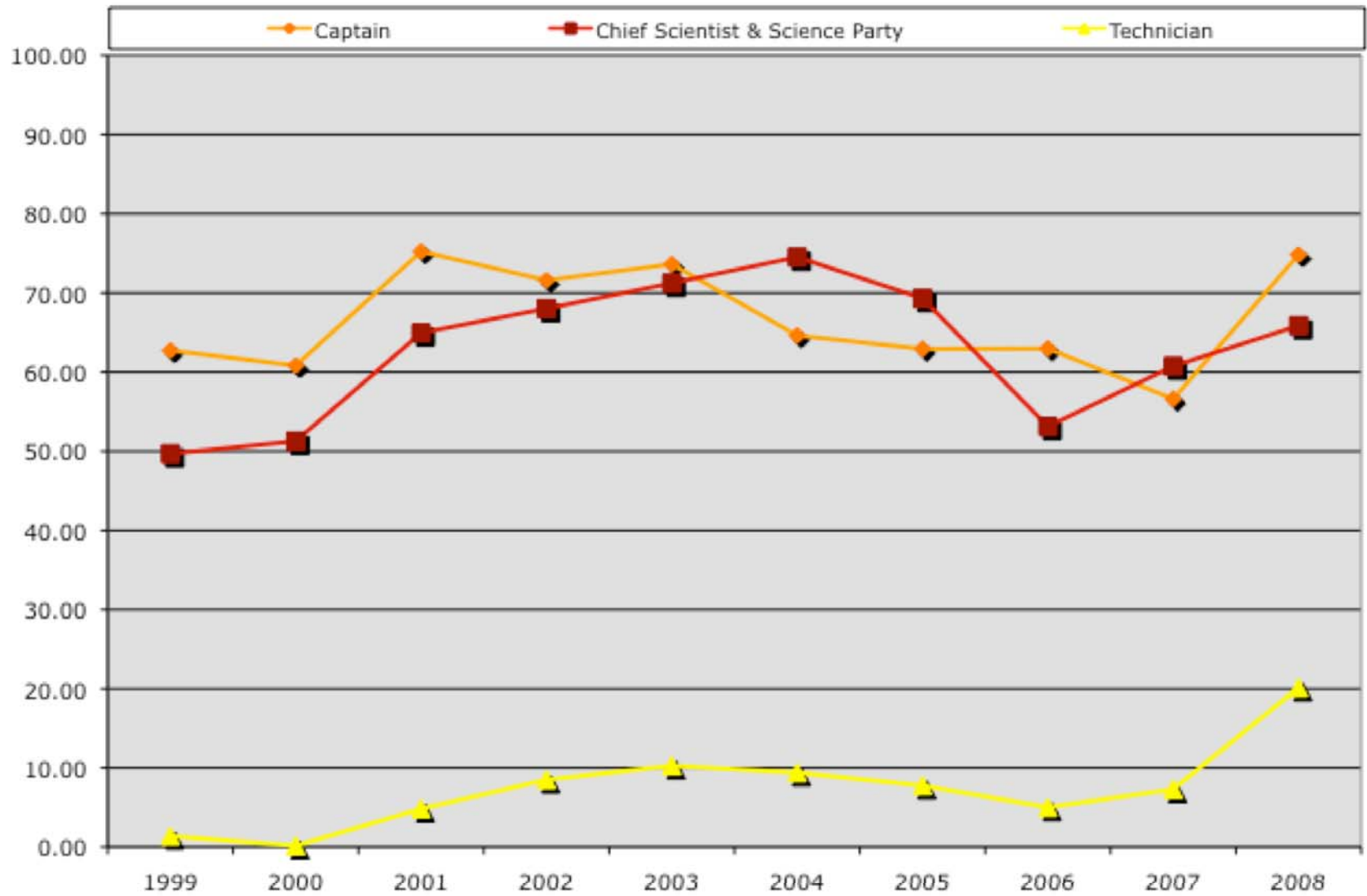
UNOLS Fleet 2001 - 2008
Lost Time Accidents at Sea
Per 200,000 hours or 100 F-T Employees



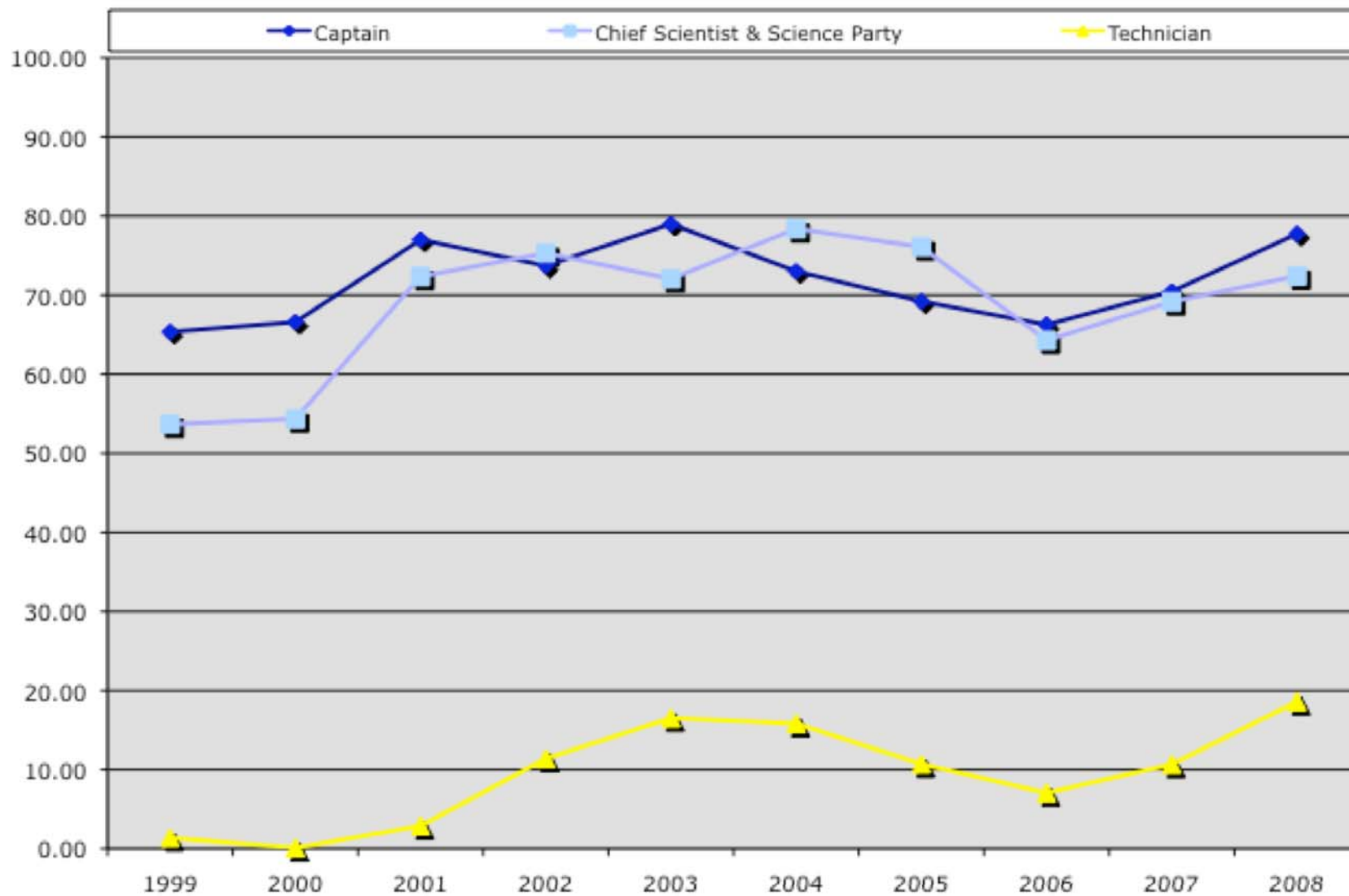
Post Cruise Assessments



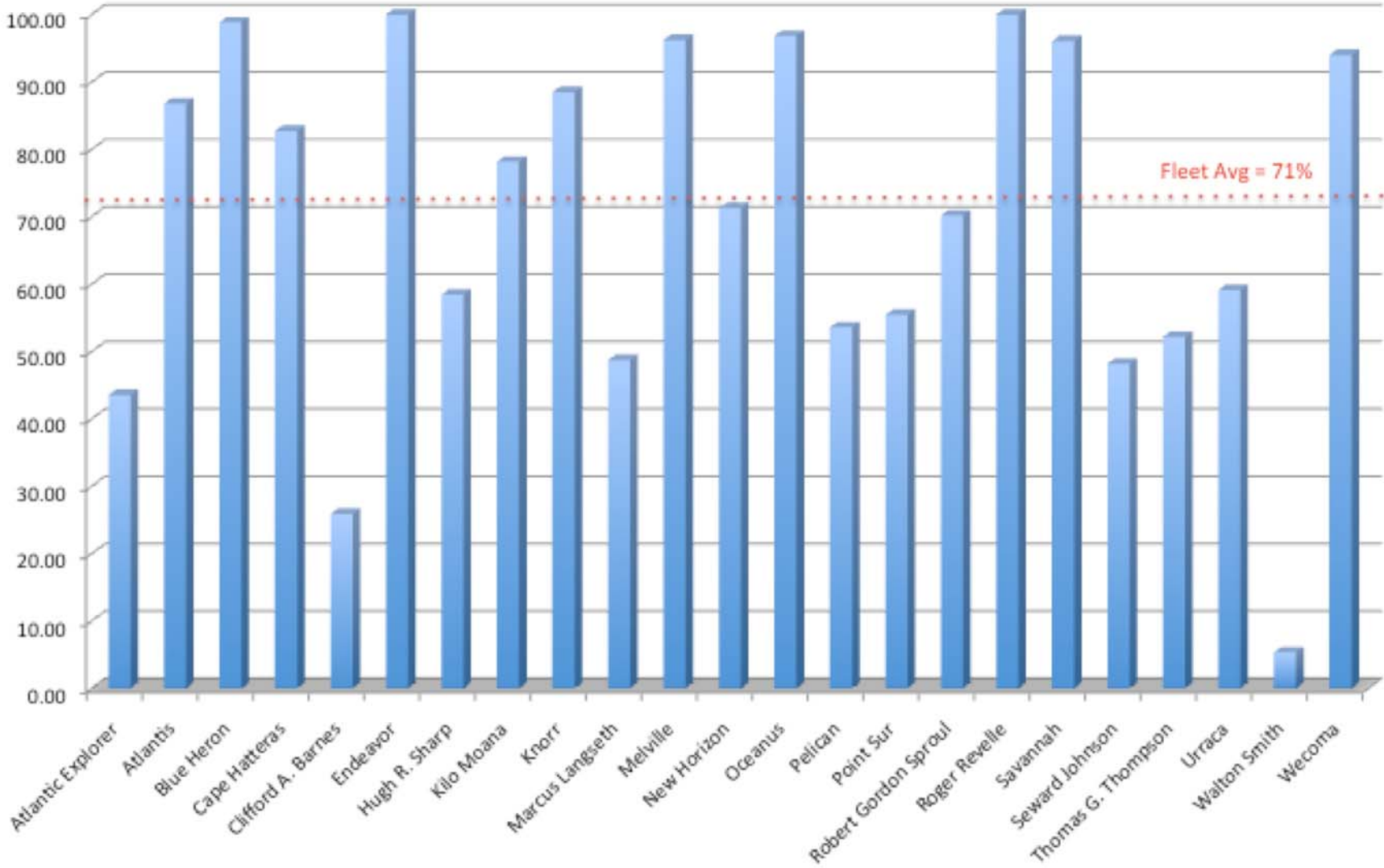
Fleet Percent Return for Post Cruise Assessments 1999 - 2008 (thru 03/02/09)



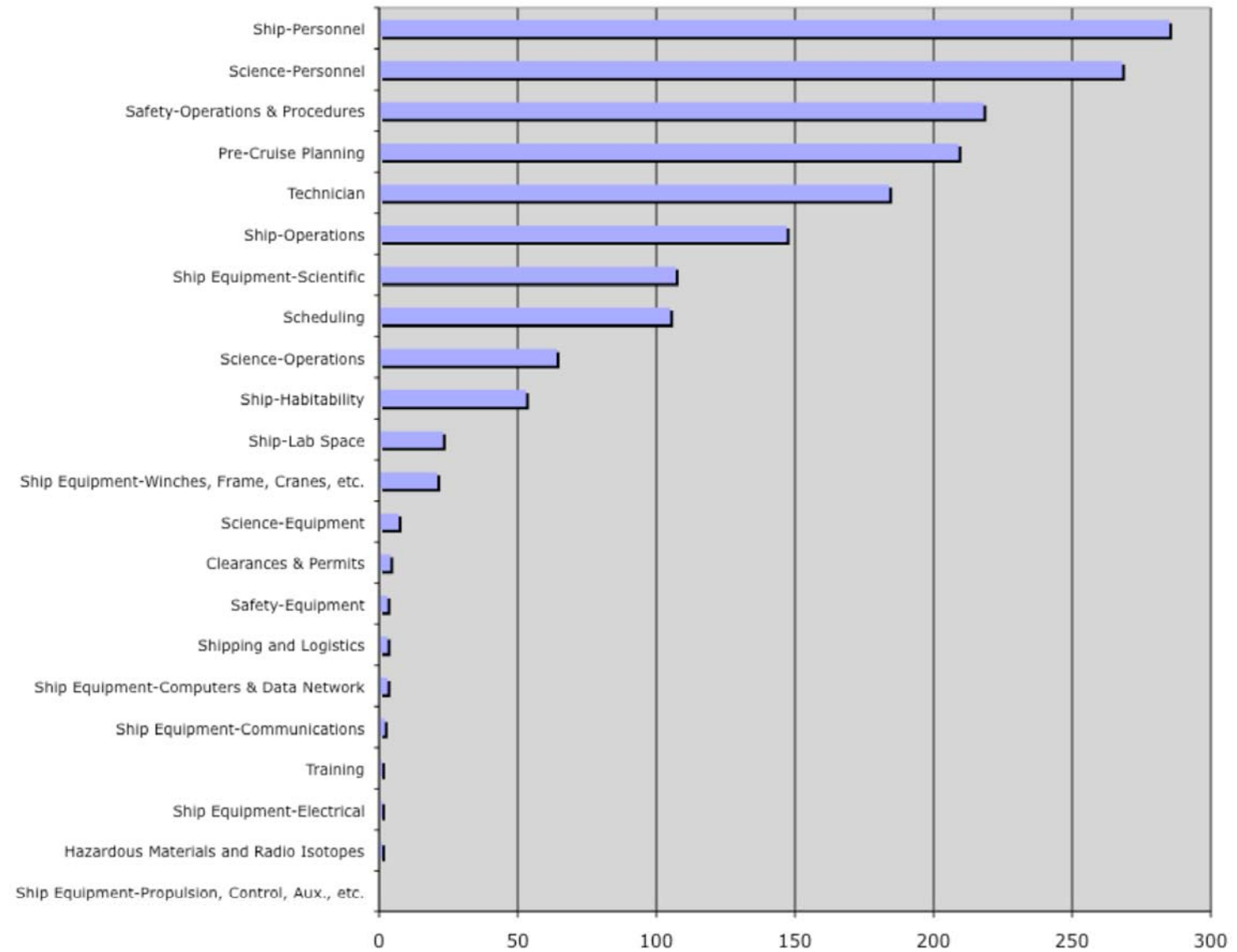
**Fleet Percent Operational Days for Post Cruise Assessments 1999 - 2008
(thru 03/02/09)**



Chief Scientist Reports - % return based on operational days



Positive Comments



Suggestions

