

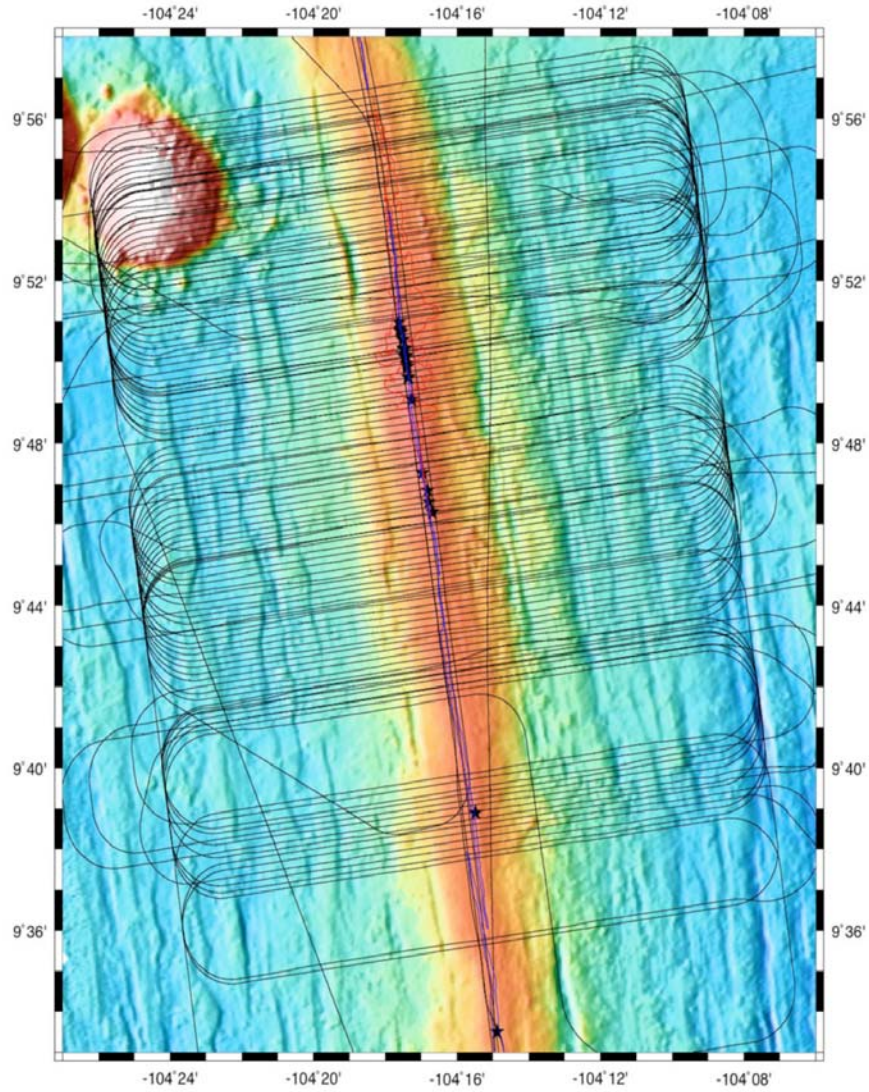
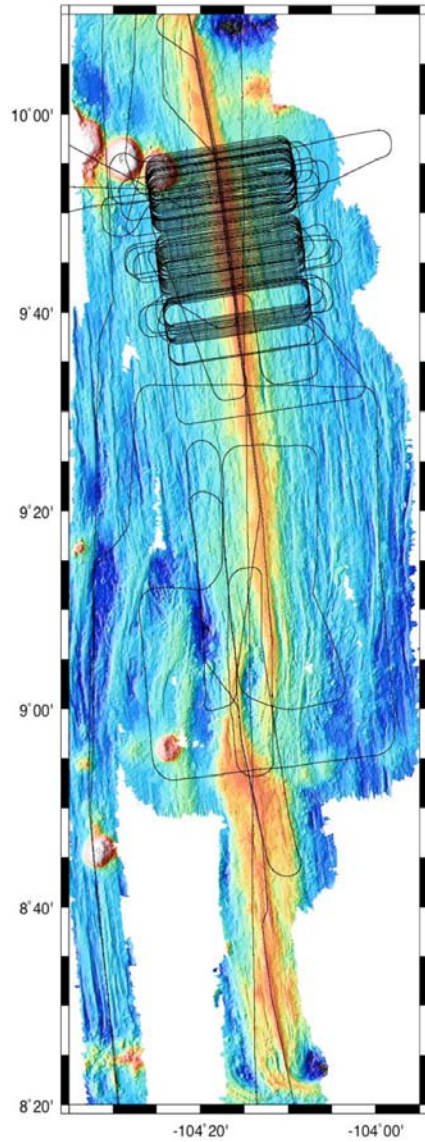
R/V Marcus G. Langseth



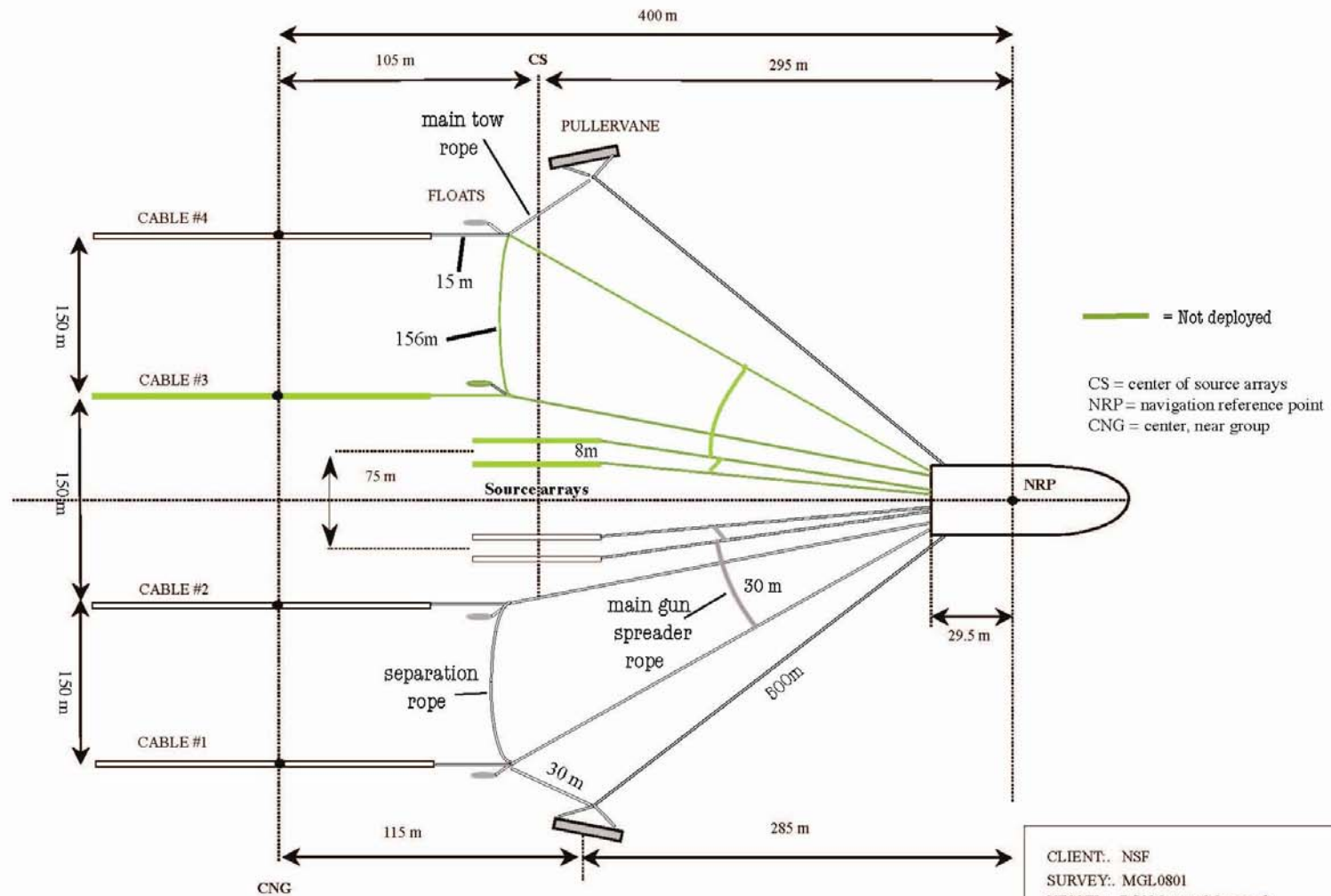
Summary of First Eight Science Cruises

- MGL0804- Costa Rica I / Holbrook (Feb to Mar) 2D MCS w/OBS
- MGL0807- Costa Rica II/ Holbrook (Mar to Apr) 2D MCS w/OBS
- MGL0808- Triple Juncture/ McGuire(Apr to May) Sound Source w/OBS
- MGL0810- 3D MCS Shakedown/Diebold
- MGL0812- EPR Mutter/Carbotte (Jul to Aug) 3D MCS
- MGL0814- Yakutat Bay/ Gulick (Sep to Oct) 2D MCS w/OBS
- Astoria Layup (Oct to Dec)
- MGL0902- Lau Basin/ Bohnensteihl (Jan) Moorings
- MGL0903- Lau Basin/Weins (Jan to Mar) Sound source w/OBS
- MGL0905 to 0908- Taiger/NTU, CGS, NSF (Mar to Jul) 2D MCS w/OBS
- MGL0911- Endeavor Ridge/ Toomey (Aug to Sep) Sound source w/OBS

3D MCS East Pacific Rise



TOWING CONFIGURATION AND OFFSETS



Note: Drawing not to scale

Astoria Lay-up

- ***New RO installed.***
- ***Fifth stage cooler for seismic air installed replacing the unit that failed on EPR***
- ***Marine growth sea chest, piping, heat exchangers ME and compressors removed.***
- ***Port and starboard valves from the seachest to the sea bay replaced.***
- ***New oily water separator installed.***
- ***New fuel tank sounding system installed.***
- ***Replaced outdated CAT hydro-mechanical shut downs with electronic safety shutdown system.***
- ***Engine Fuel Injectors both Main Engines.***
- ***New Passive acoustic monitoring system for MMO's.***
- ***Removed MMO observation booth from tower and planned replacement. Original booth not CG/ABS approved.***
- ***Sound Source airguns rebuilt.***
- ***Core winch hydraulic motor removed and sent ashore for repair***
- ***Ship's original auto pilot replaced with a new Simrad autopilot.***
- ***Interior spaces- accomodation improvements***
- ***Rescue boat repair/ maintenance.***
- ***HIAB winch rebuilt + reinstalled (and weight tested) plus end hook replacement***
- ***Training on the following equipment Main Engines, Ariel seismic compressors, Caterpillar Diesel engines driving the Ariels, and FRC operations.***
- ***ABS and Coast Guard Annual Inspection***

