



NOAA

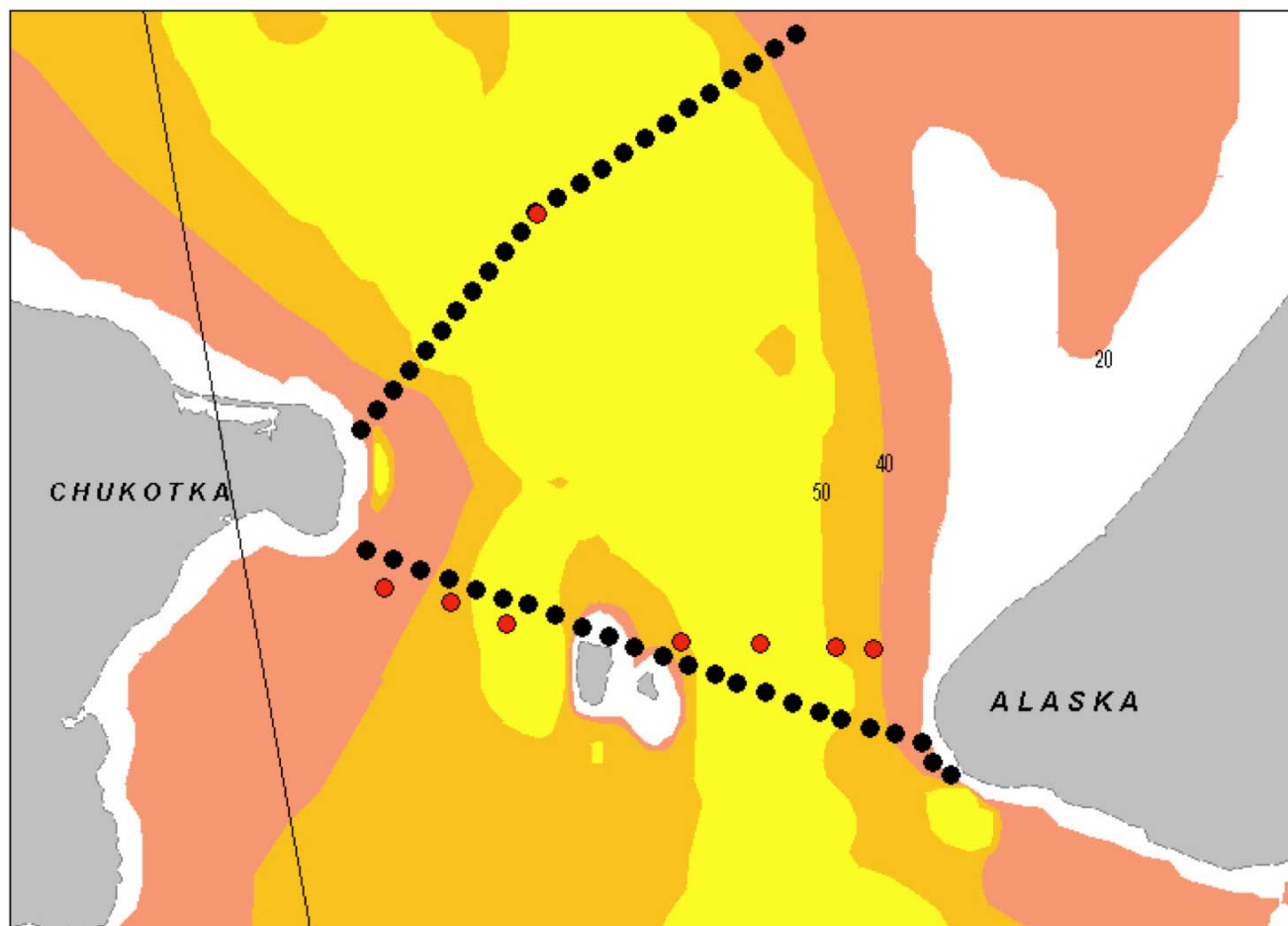
AICC Report

NOAA Arctic Research Program

kathy.crane@noaa.gov

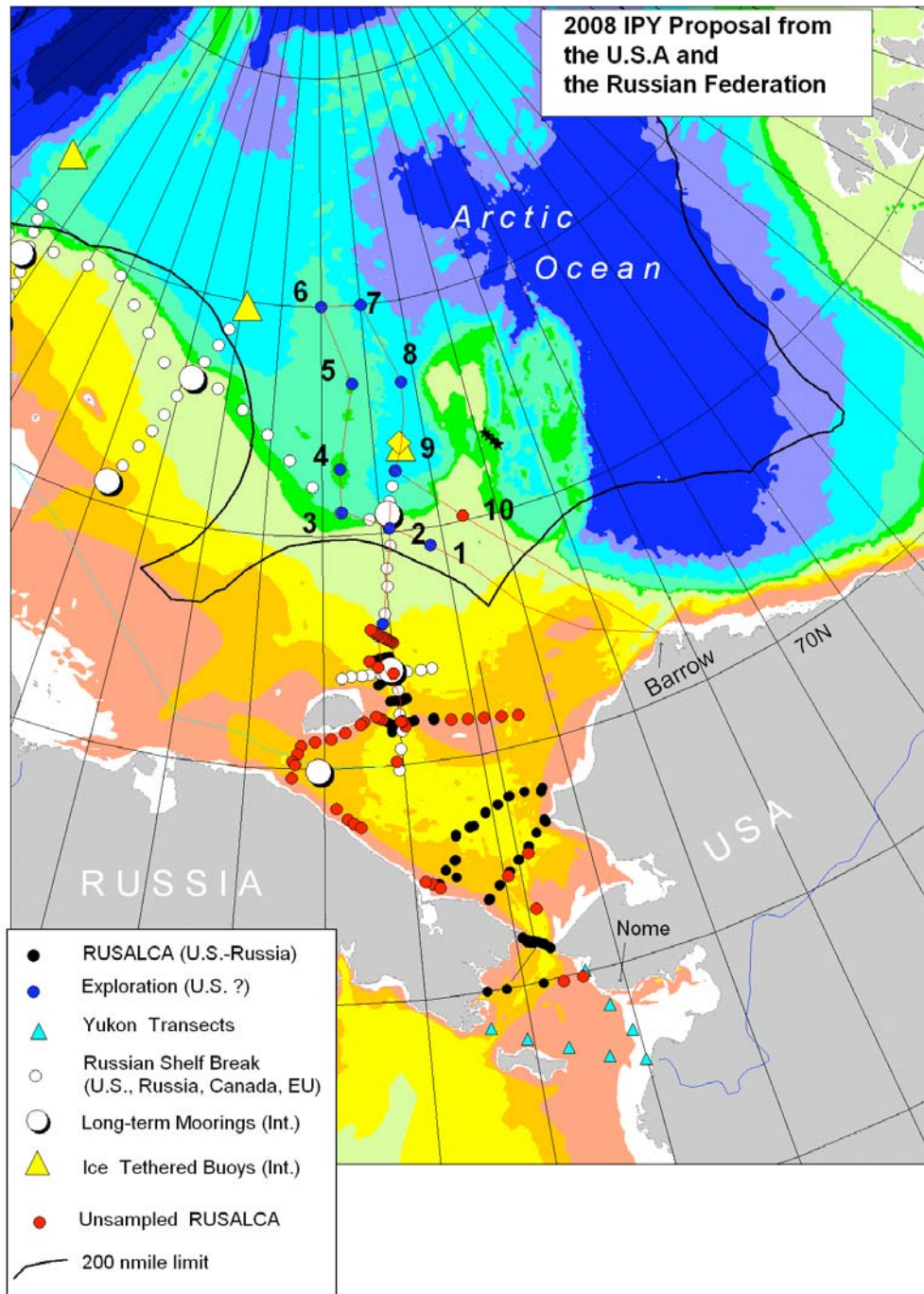
- RUSALCA
 - Climate Change and Consequences
- NABOS
 - Atlantic Water into Nansen Basin
- International Siberian Shelf Studies
 - Transport of Water, Heat, Carbon, Sediment
- Xue Long
 - International Collaboration with Chinese

RUSALCA 2008



RUSALCA STATIONS, BERING STRAIT

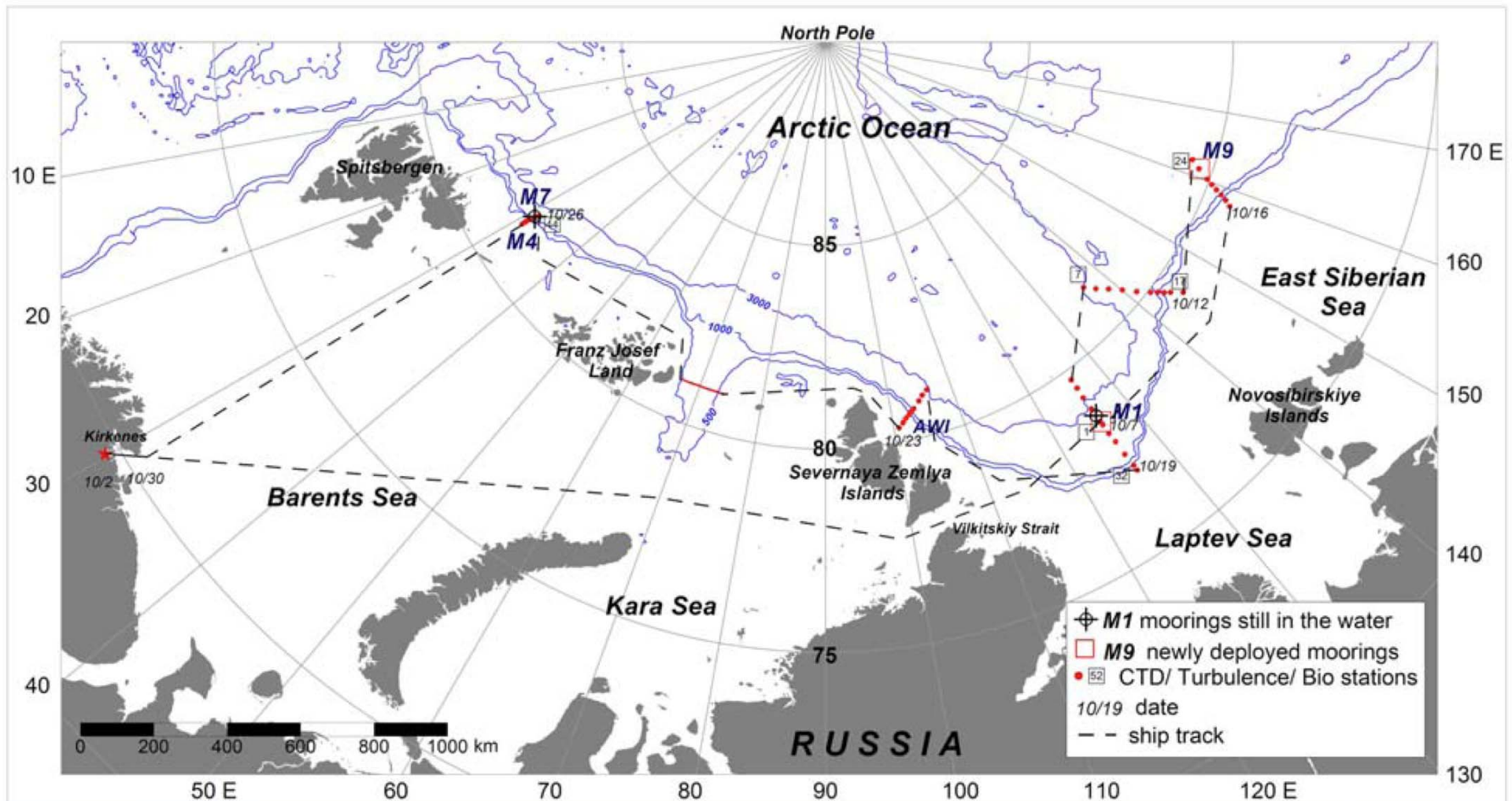
PROPOSED MOORING LOCATIONS ●



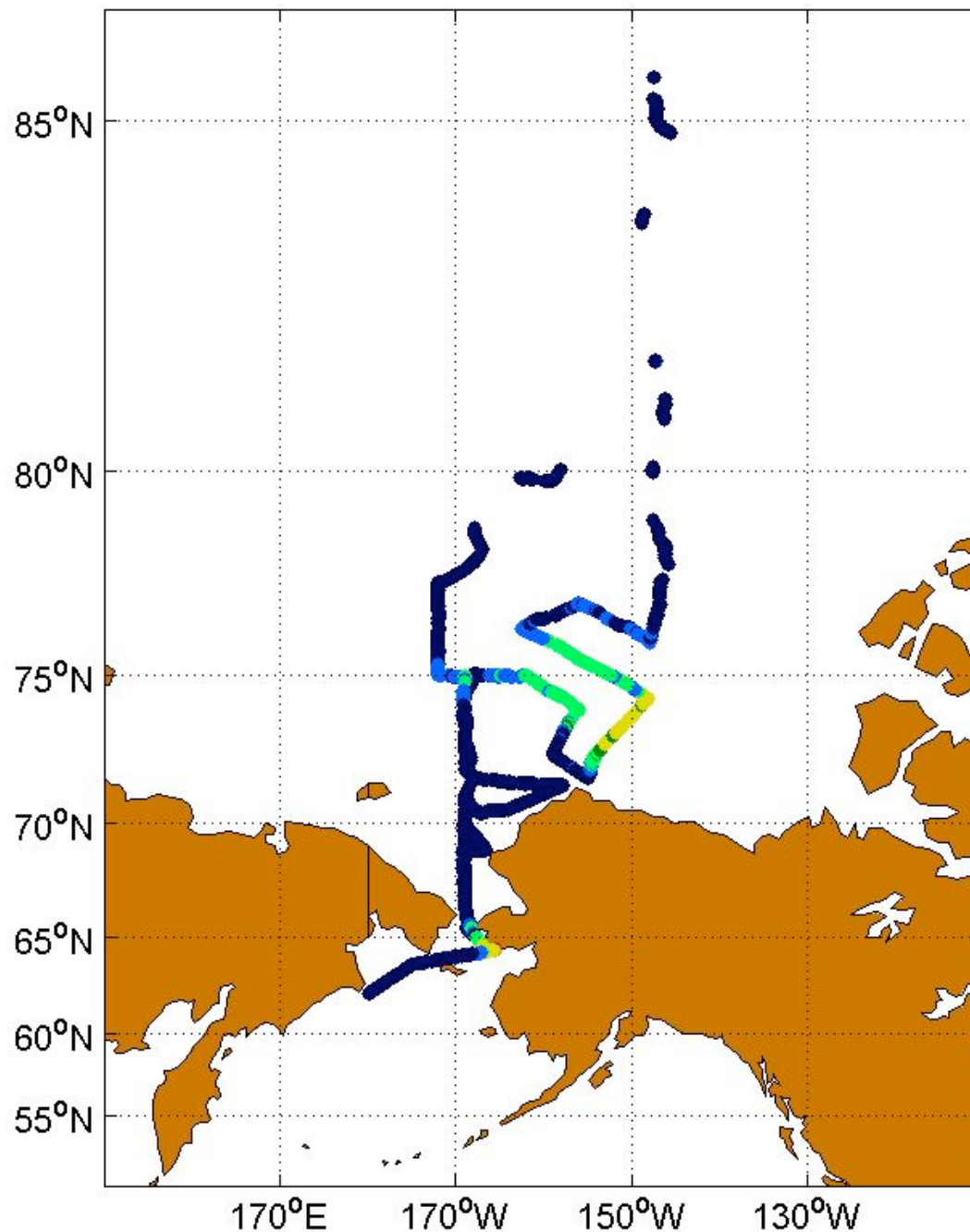
2009

Multidisciplinary
Project carried over
from 2008 plan

NABOS



R/V Xuelong Arctic 2008 xCO₂ 7/30/08 - 9/11/08



Xue Long

- Train scientists from PRC in modern methods of CO₂ analysis
- Scientific Exchanges
Install underway pCO₂ system on *Xue Long*
- Training of Personnel in operation of system
- Interpretation of results of expeditions to the Arctic and Antarctic

Issues

- Advanced Funding for Russian ship time
- Russian EEZ clearance

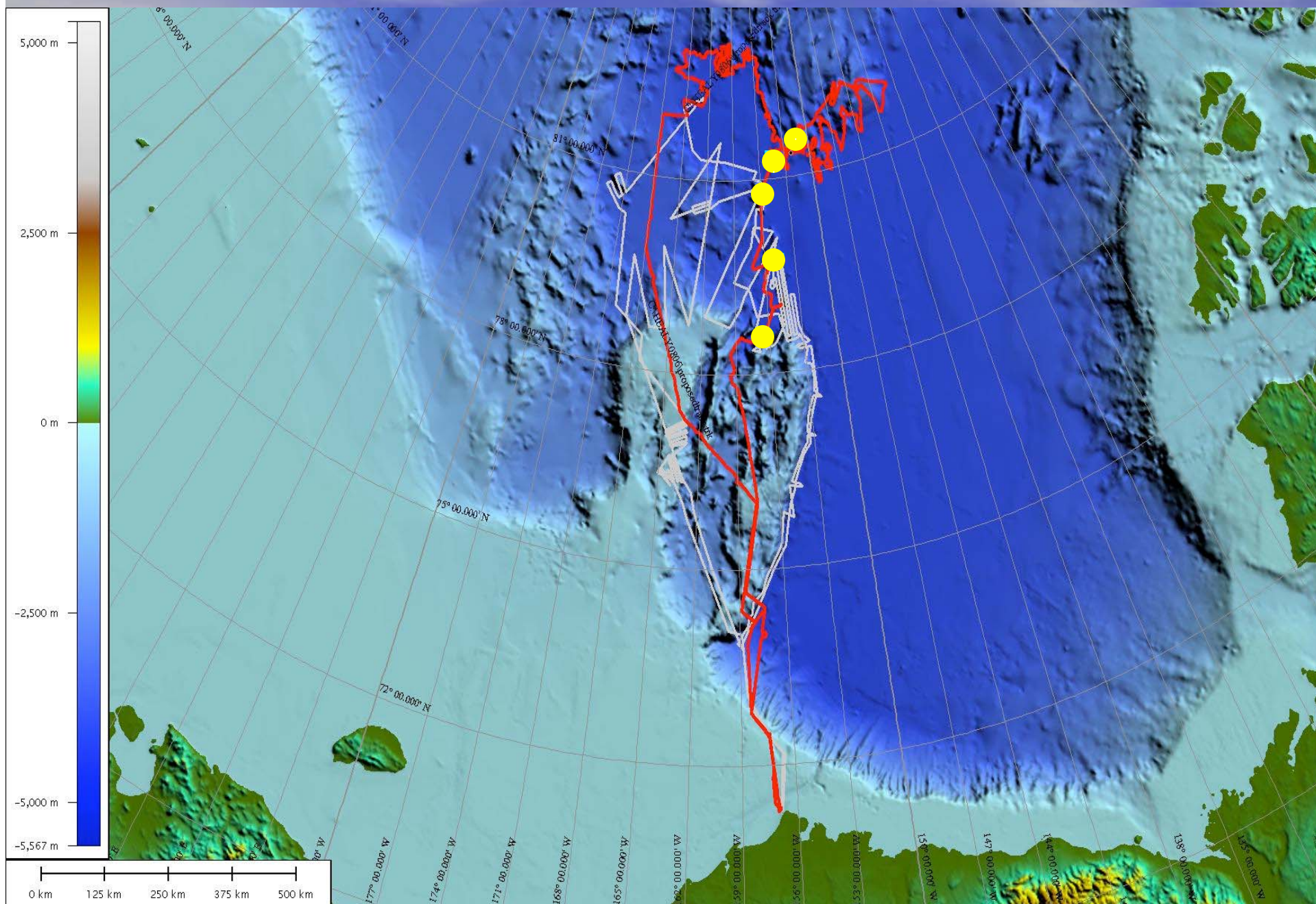


Extended Continental Shelf

NOAA Funding
UNH and USGS PIs



HEALY 0805 - SHIPTRACK AND DREDGE SITES





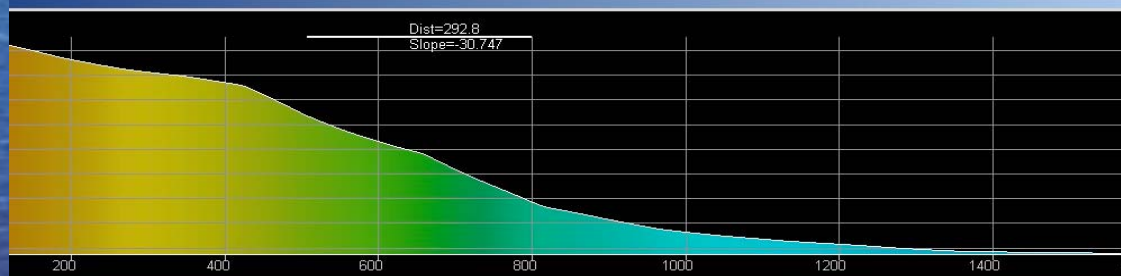
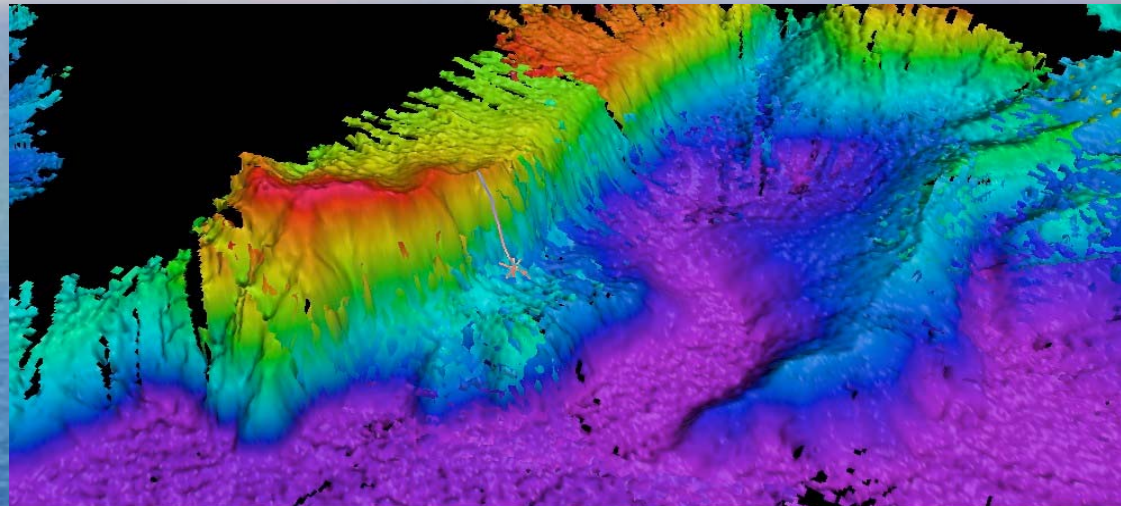
Dredge

Dredge loaned by
USGS

Not ideal design,
but it worked

Teamwork

Dredge Site D-1 31 deg slope



8/30/2008 5:57:14 PM

Fig 53a - overview of dredge site HLY0805-D1

Dredge Site D-1



Terrestrial sediments - deltaic deposits?????

Dredge 6 - "Foot"



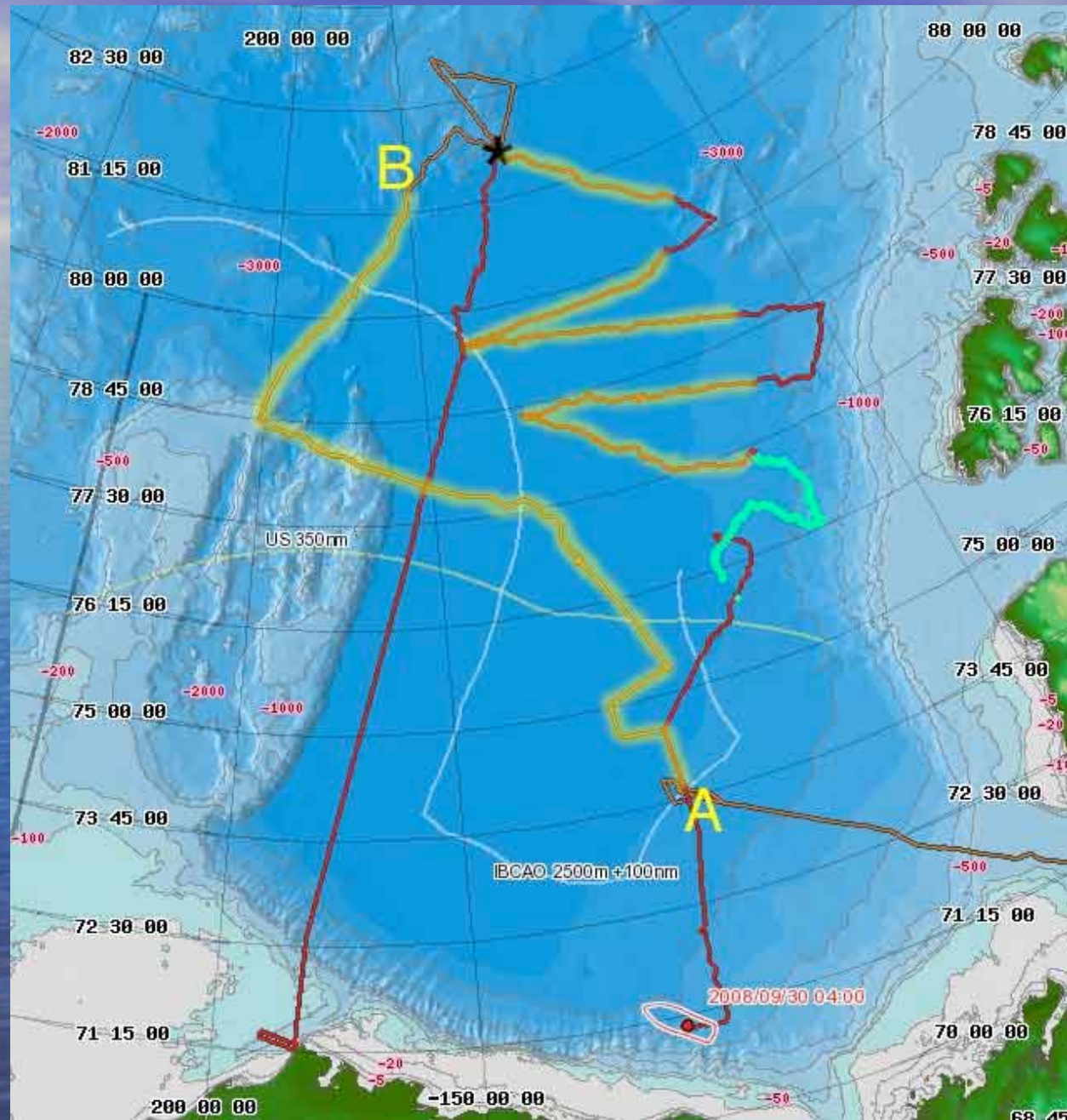
Basalts

Dredge 7 - Northwind Ridge



Sediments and basalts

HEALY 0806 and LOUIS St. LAURENT WORK



Plan for 2009

- Two-ship Seismic and Bathymetry
 - Hutchinson, Childs
- Healy Bathymetry
 - Mayer, Armstrong
- Time breakdown between missions TBD

Issues for the Future

- Marine Mammal IHAs
 - Whales
 - Seals
 - Polar Bears
- Continuing Community Relations
- General NEPA Requirements

