

Current Events in the Arctic Sciences Division

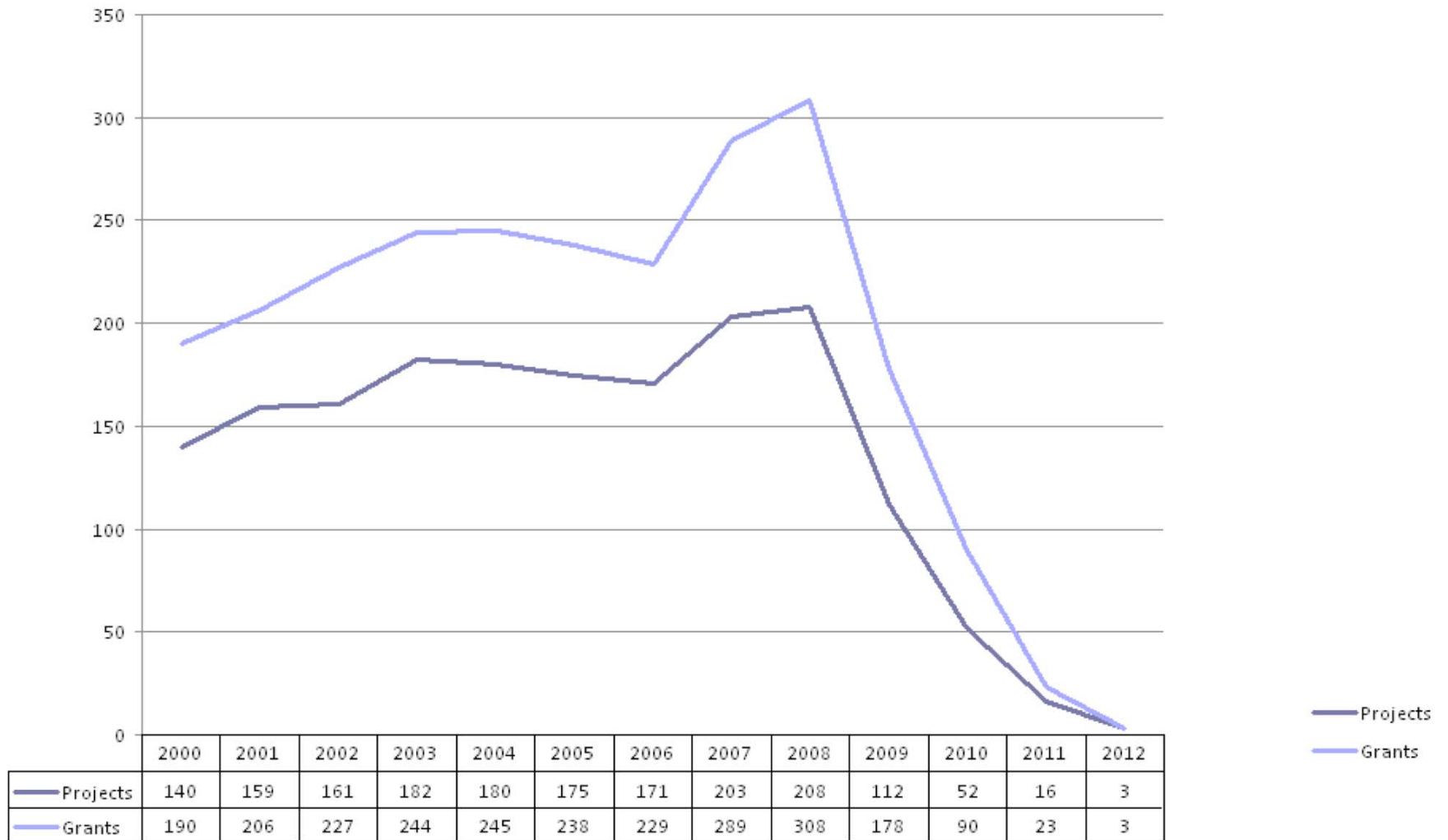
Arctic Icebreaker Coordinating Committee Meeting
Seattle, Washington
2-3 December 2008

Renée Crain
Arctic Research Support and Logistics

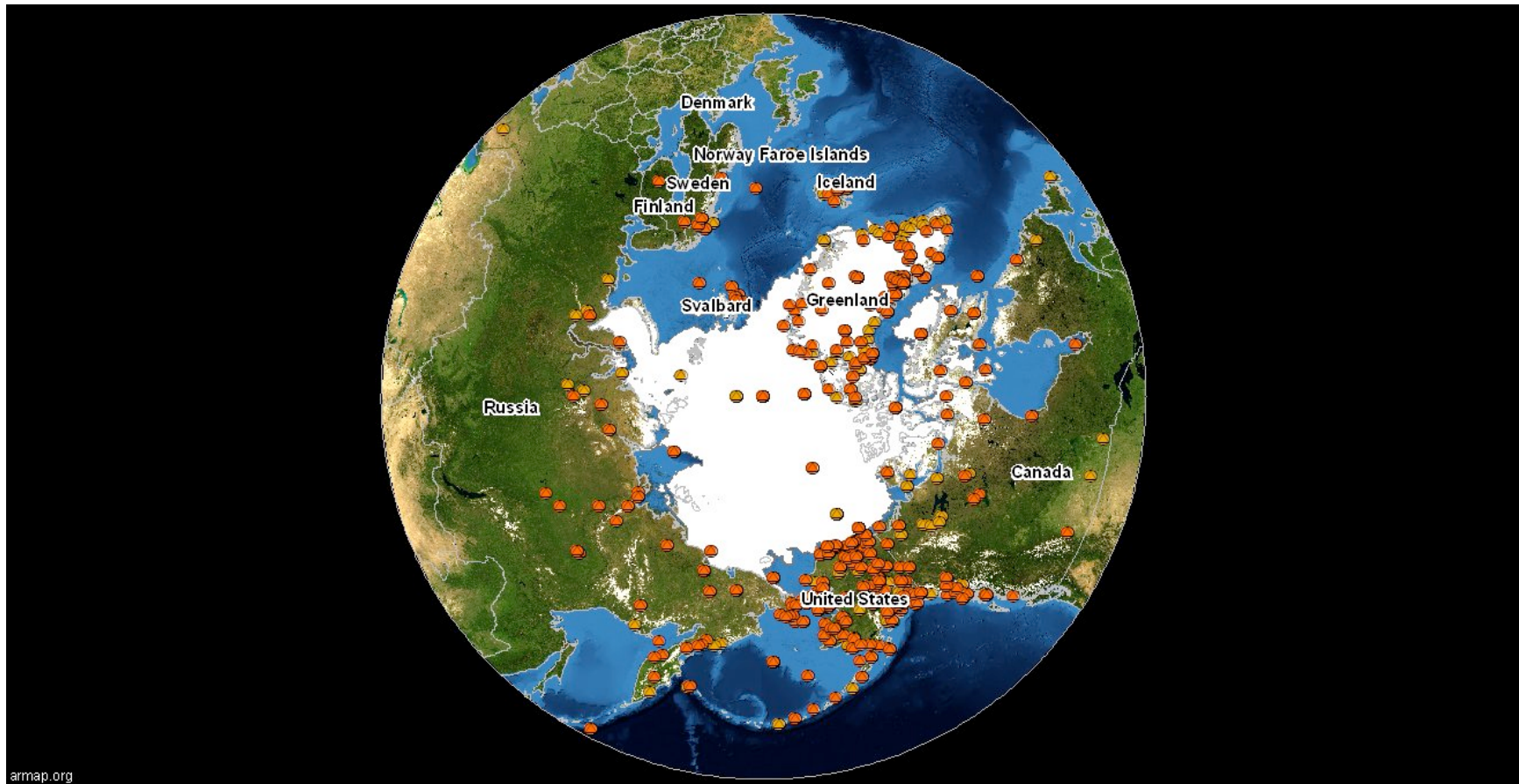
Topics for AICC

- Healy multibeam procurement and installation on track for drydock
- Medical clearance: no plans to physically qualify cruise participants, will consider PQs in some cases
- Arctic Sciences Division and RSL Program
 - Three research solicitations for FY2009
 - Request for Proposals for ship-based science support coordination in progress
 - Barrow Arctic Science Consortium
 - Budget and plans

Total Projects/Grants

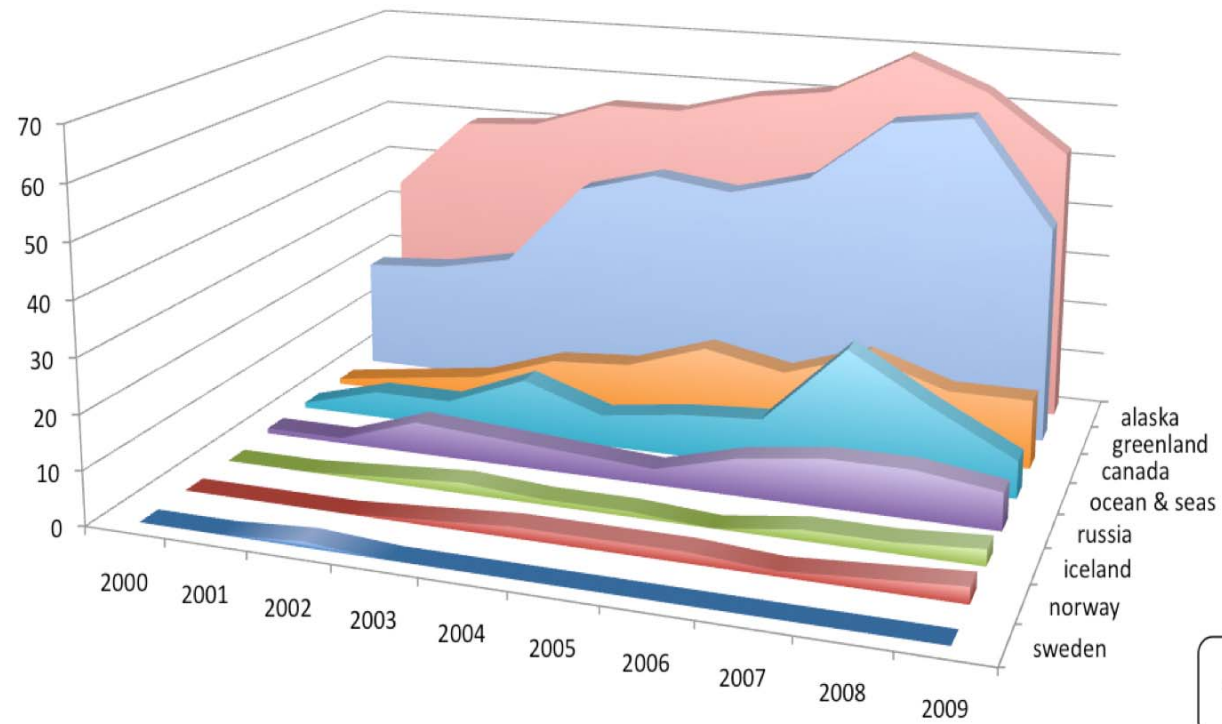


Arctic Sciences Division



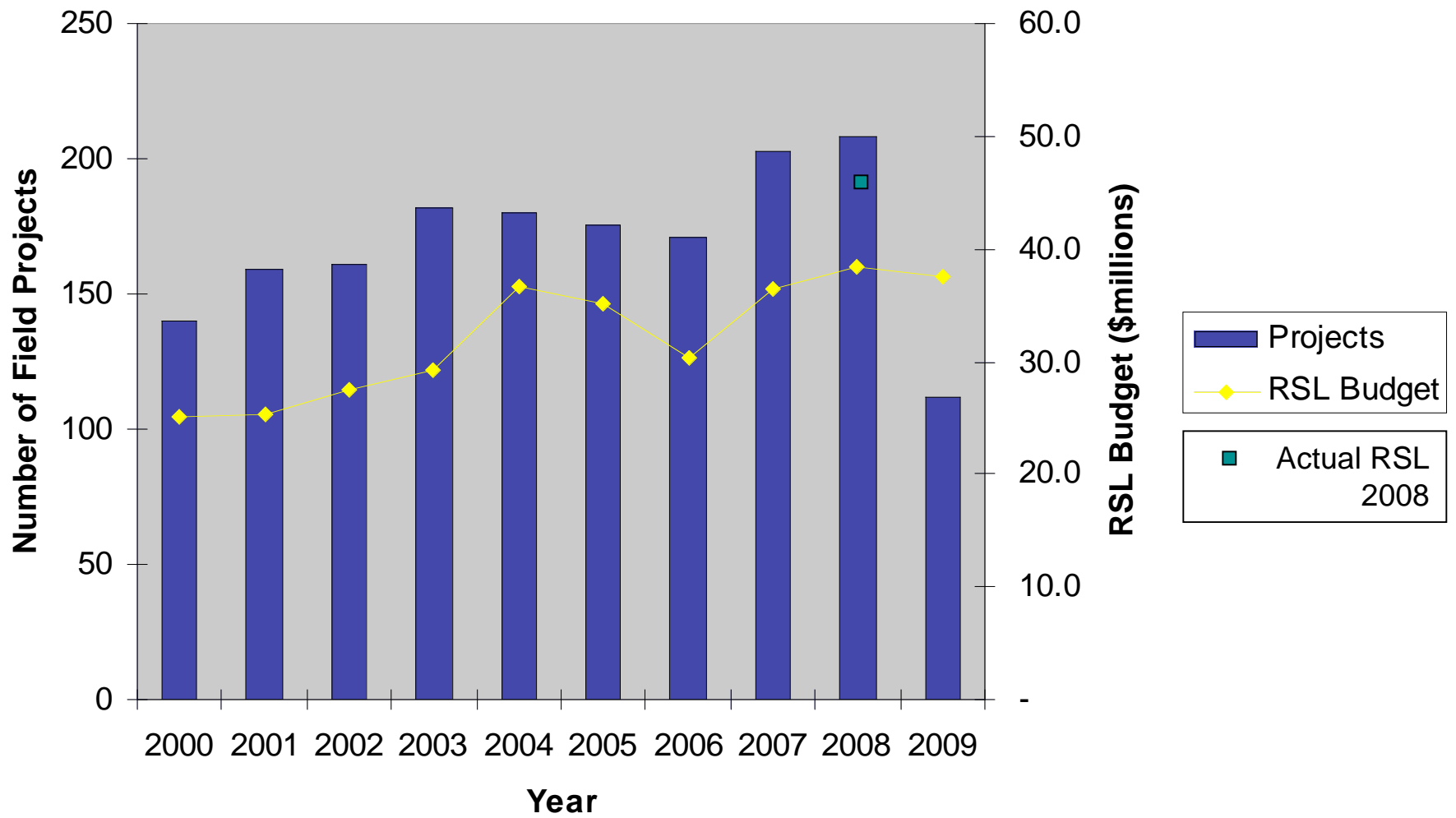
Arctic projects 2007 (orange) and 2008 (red) from armap.org

CPS-Supported Projects by Region



	2000	2001	2002	2003	2004	2005	2006	2007	2008	2009
sweden	0	0	1	0	0	0	0		0	0
norway	0	0	0	1	2	2	2	1	2	3
iceland	0	0	1	2	1	1	0	2	2	3
russia	1	1	6	5	4	3	7	9	9	7
ocean & seas	1	5	5	11	6	8	9	24	15	7
canada	1	3	5	10	11	16	13	18	13	13
greenland	21	22	25	41	45	43	47	59	61	41
alaska	35	49	50	55	55	59	61	69	63	52

Arctic Projects and Logistics Budget

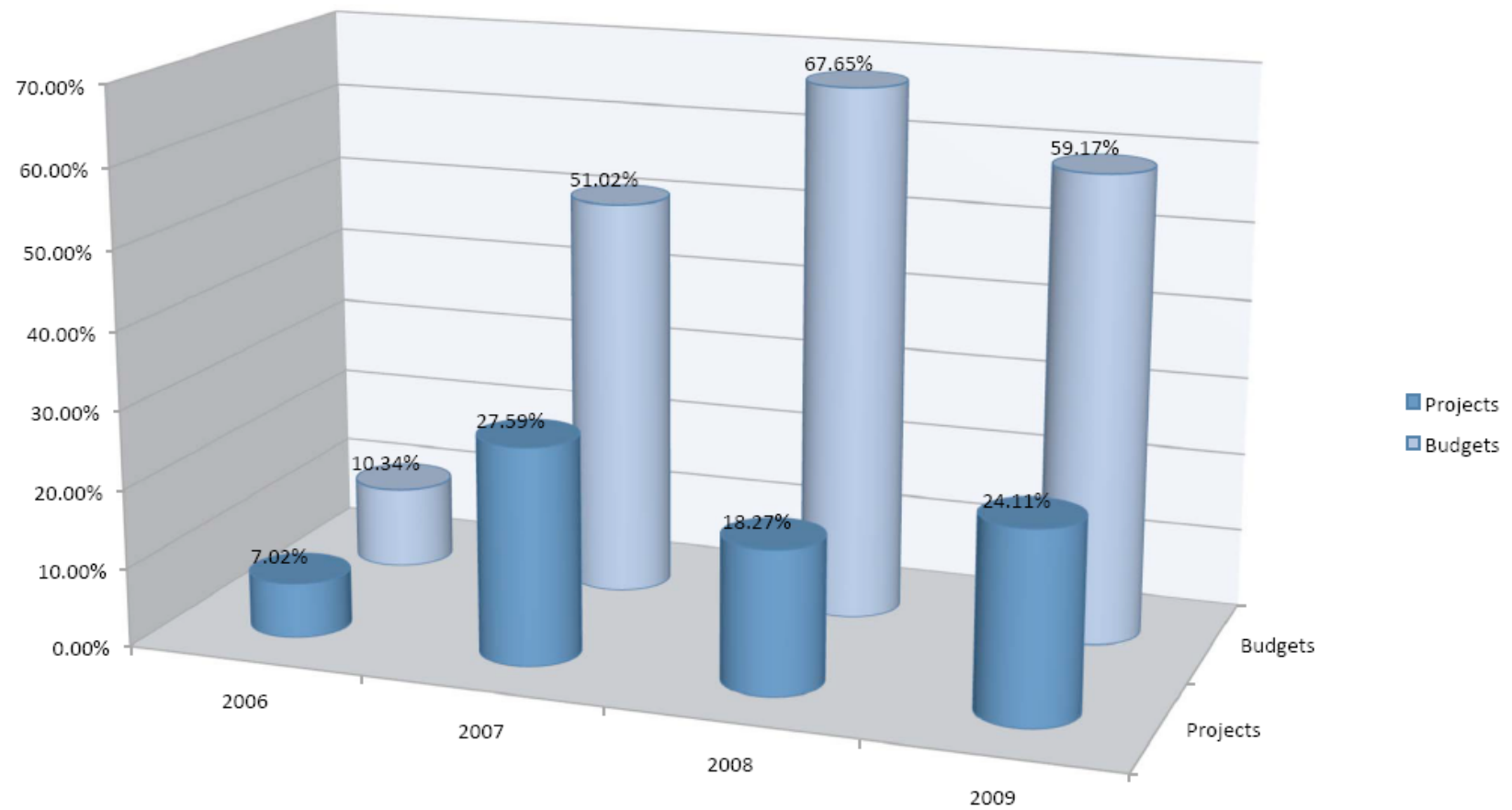


	FY07	FY08	FY08 end	FY09 CR	FY09 Req
ARCSS	21.3	17.2	13.0	17.0	21.0
ANS	15.3	15.3	13.3	15.0	15.5
Social Sci	3.5	3.5	3.5	3.5	4.0
RSL	36.4	38.3	45.6	37.5	43.0
Education	1.5	1.5	1.4	1.0	1.5
AON	8.7	12	12.1	12	12.5
Other	2	1.4	1.5	3.2	4.5
Total	89.8	89.2	90.4	89.2	102

What Happened in 2008

- International Polar Year 2007
- Guidance from NSF Contracts
 - Obligate funds in the year work is committed
- Fuel prices increased
- Dollar weakened internationally

Percentage of Projects/Budgets that are IPY-related



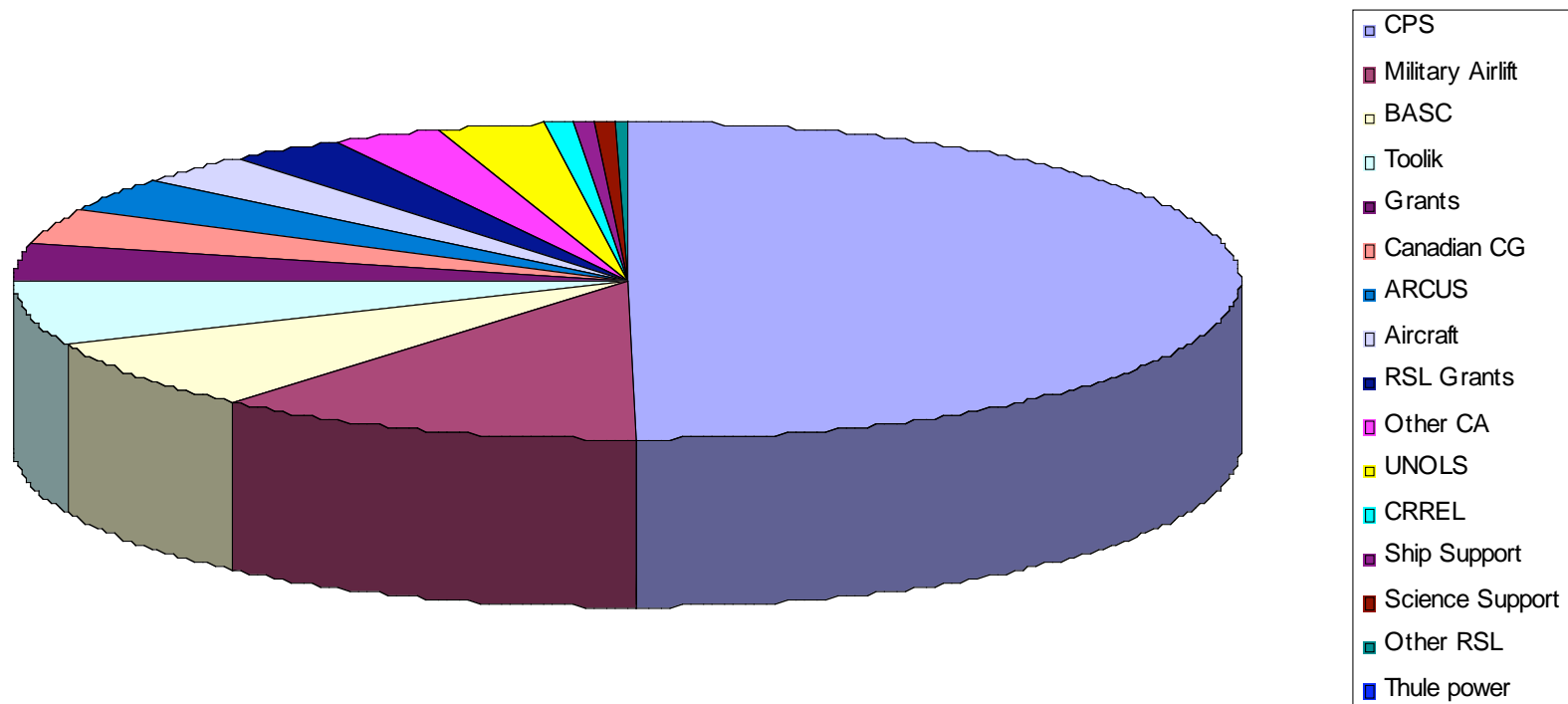
What Happened in 2008

- International Polar Year 2007
- Guidance from NSF Contracts
 - Obligate funds in the year work is committed
- Fuel prices increased
- Dollar weakened internationally

Strategies for Research Support and Logistics (RSL)

- Current on payments since 2008
- Complete reimbursements for Icebreaker services
- Manage ship resources more effectively
- Increase management and accountability of Cooperative Agreements
- No call for proposals in 2009
- Stick to original support scope – limit ‘nice to haves’
- Carefully plan maintenance and upgrades at facilities
- Manage aircraft support requirements
 - Develop a Greenland Inland Traverse (GrIT)
 - Develop Greenland Operations Model

RSL Budget by Expenditure in 2008



Ship-based Science Support Costs 2008

