



2007 Icebreaker *Healy* Arctic Mapping Cruise

NOAA – University of New Hampshire
Joint Hydrographic Center
<http://www.ccom.unh.edu/>

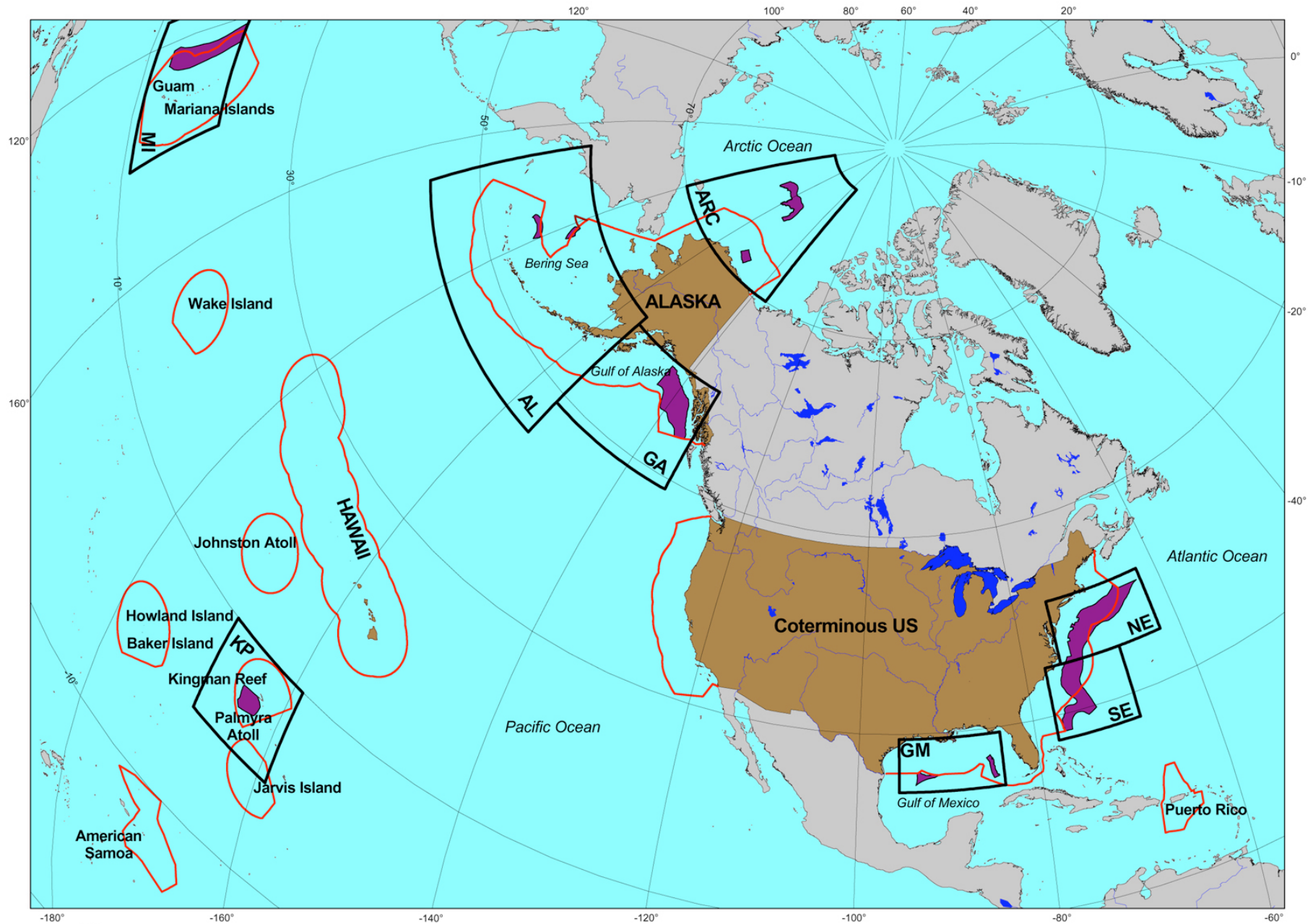
NOAA CELEBRATES
200 YEARS of SCIENCE, SERVICE, and STEWARDSHIP



UNCLOS Article 76

- Defines the continental shelf of a coastal State
- Extends the continental shelf beyond 200 nm to include the seabed and subsoil to the edge of the continental margin
- Sets rules for defining limits
- Specifies key bathymetric features, including
 - 2500-m isobath
 - Foot of the Slope





OVERVIEW MAP: IDENTIFIED AREAS WHERE BATHYMETRIC SURVEYS MAY BE REQUIRED

General map description:
 This map shows an overview of the identified areas where new bathymetric surveys may be required to establish the bathymetric components of particular importance for the United States in claiming an extension of the continental margin under the provisions of Article 76 of the United Nations Convention on the Law of the Sea.

Legend:

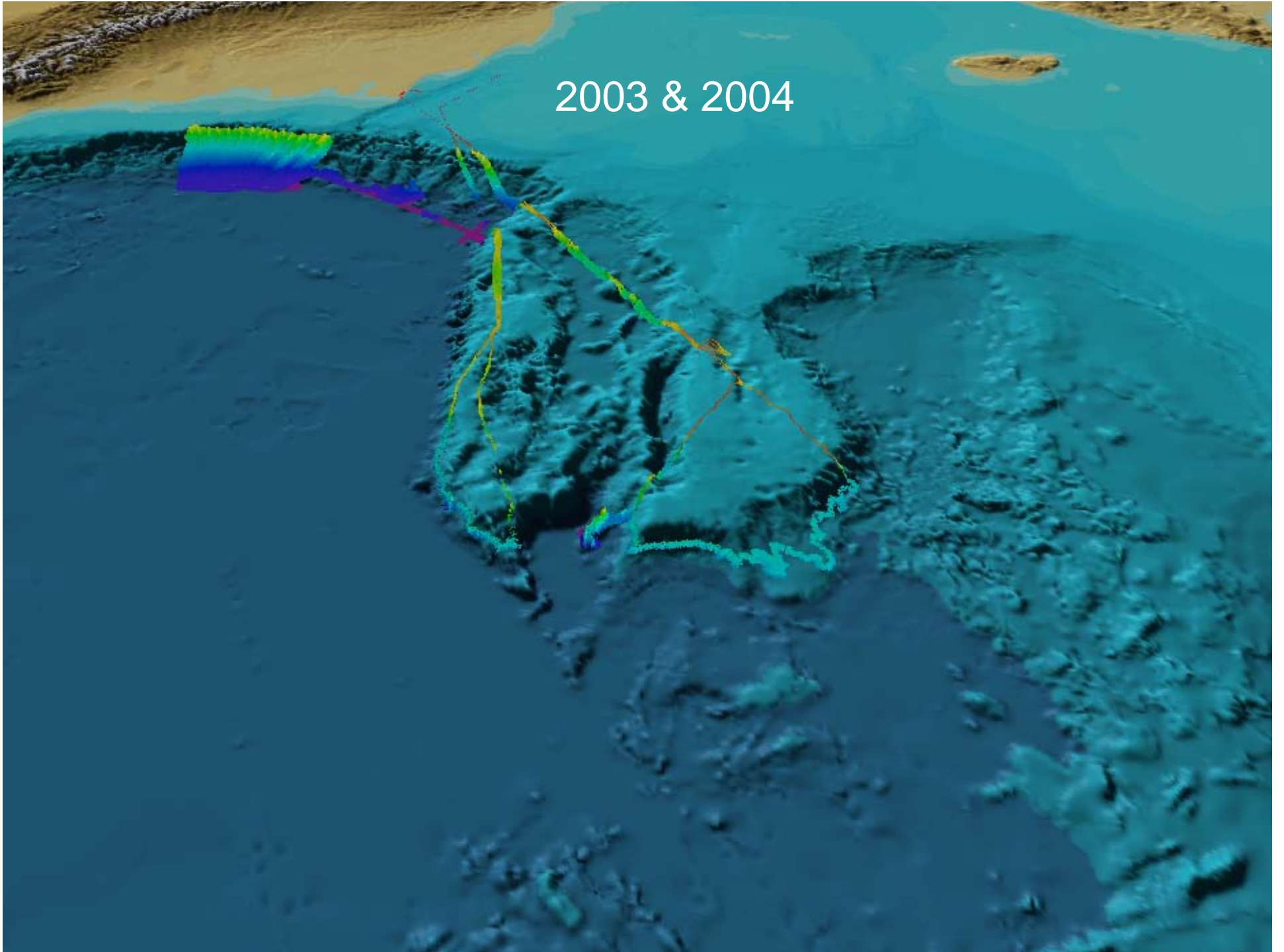
- NE Detailed Map with index letters
- Exclusive Economic Zone (EEZ)
- Identified areas where bathymetric surveys may be required
- Eastern Special Area (See note Z, NOAA Chart 50 "North Pacific Ocean")

Projection: Lambert Azimuthal Equal Area
 Datum: WGS 84

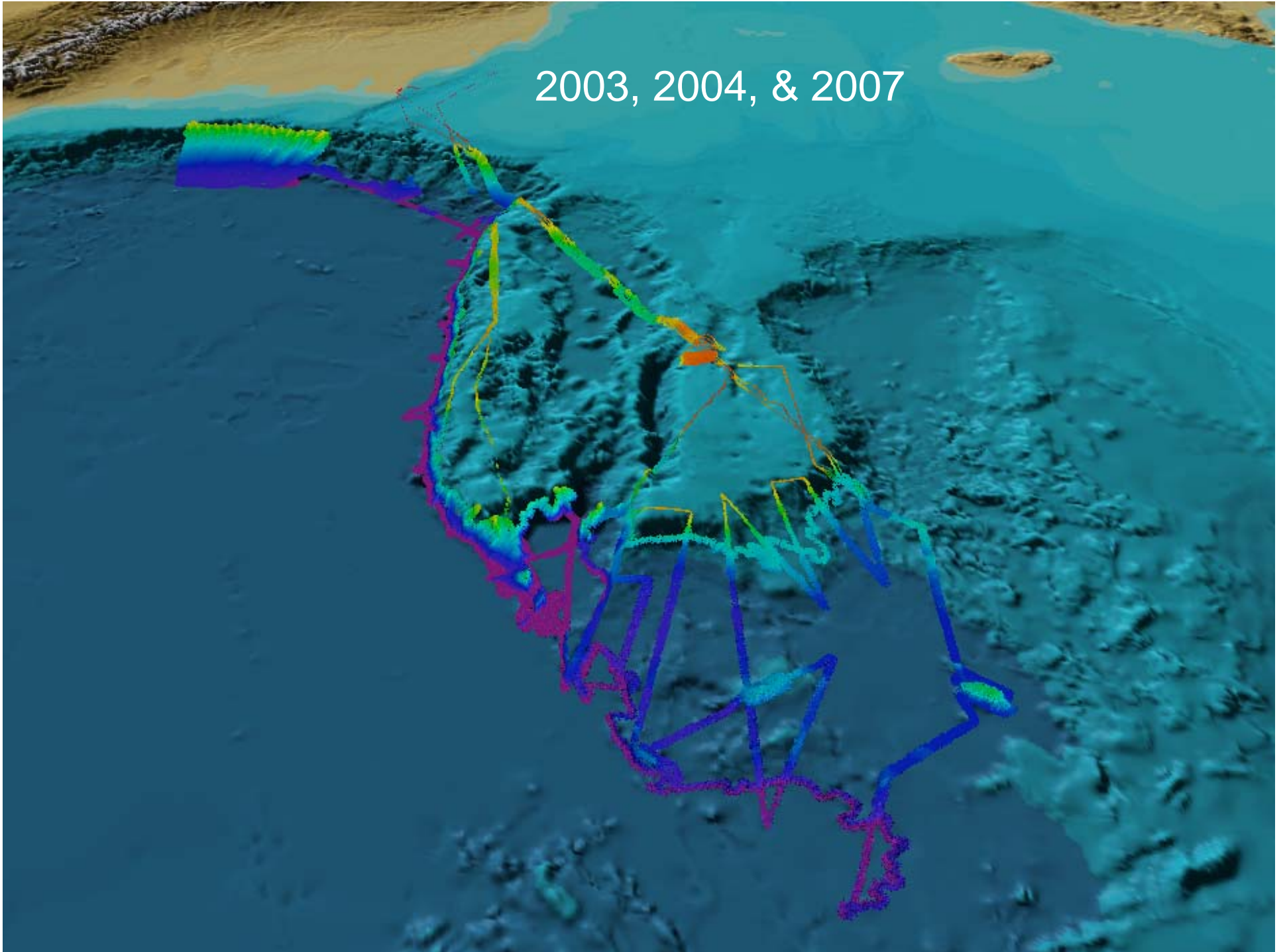
Map compiled by:
 Martin Jakobsson,
 Andy Armstrong and Larry Mayer
 Center for Coastal and Ocean Mapping
 Joint Hydrographic Center



2003 & 2004



2003, 2004, & 2007



Center for
Coastal & Ocean Mapping
Joint Hydrographic Center

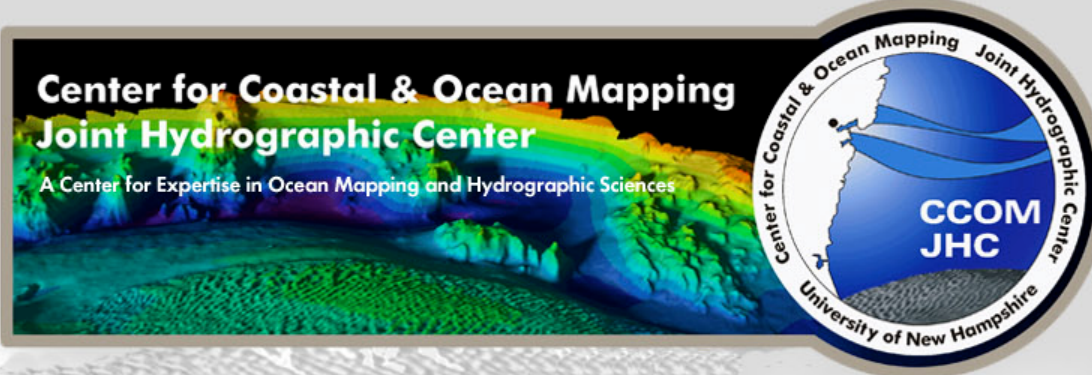
24 COLOVOS ROAD, DURHAM, NH 03824
PHONE 603-862-3438 FAX 603-862-0839

Today at CCOM it is:
Monday - October 29, 2007

Search:

Just this site WWW

- HOME - CCOM-JHC News
- About CCOM-JHC
- Conferences
- Corporate Partners
- Education
- GEBCO/NIPPON
- Image Gallery
- Outreach
- People
- Projects
- Publications
- Research
- Resources
- Seminars



Shallow Survey 2008 website is now online! For information on next years Shallow Survey conference please click on the image to the left or [click here](#).



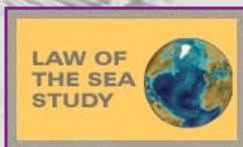
Ground has been broken for the new CCOM/JHC building addition! See pictures and updates on the [about us](#) page.



Colovos Rd. underpass shut down to vehicles PERMANENTLY. There will be no access to Colovos Rd. via the underpass near the Heat Plant, vehicle access to the Chase Engineering Lab will be through the new Southern underpass from McDaniel Drive/College Rd.



See the [updated campus map](#) on our directions page.



The latest issue of the [Anchor](#) (the ccom newsletter) is now online.

Recent CCOM/JHC articles

- [Coast Guard Plans to Set Up Arctic Base](#) - Associated Press. Oct 25, 2007
- [New Coast Guard Task in Arctic's Warming Seas](#) - The New York Times. Oct 19, 2007
- [U.S. Coast Guard seeks base in Arctic](#) - International Herald Tribune. Oct 19, 2007
- [U.S. Draws Map of Rich Arctic Floor Ahead of Big Melt](#) - The Wall Street Journal. Aug 31, 2007
- [Scientists Take Underwater Robot on Black Sea Expedition](#) - Science Daily. Aug 20, 2007
- [U.S. Coast Guard joins in Arctic oil rush](#) - Christian Science Monitor. Aug 19, 2007
- [Americans Launch Another Arctic Expedition](#) - Kommersant. Aug 15, 2007



