





1A MDE



B-48 Standby



CART and TACT



Pacific - San Diego



Middle Pacific - Pearl Harbor



Pacific Northwest - Everett

Afloat Training Group



Helo Stan



AWS 08 Law Enforcement



AWS 08 Law Enforcement



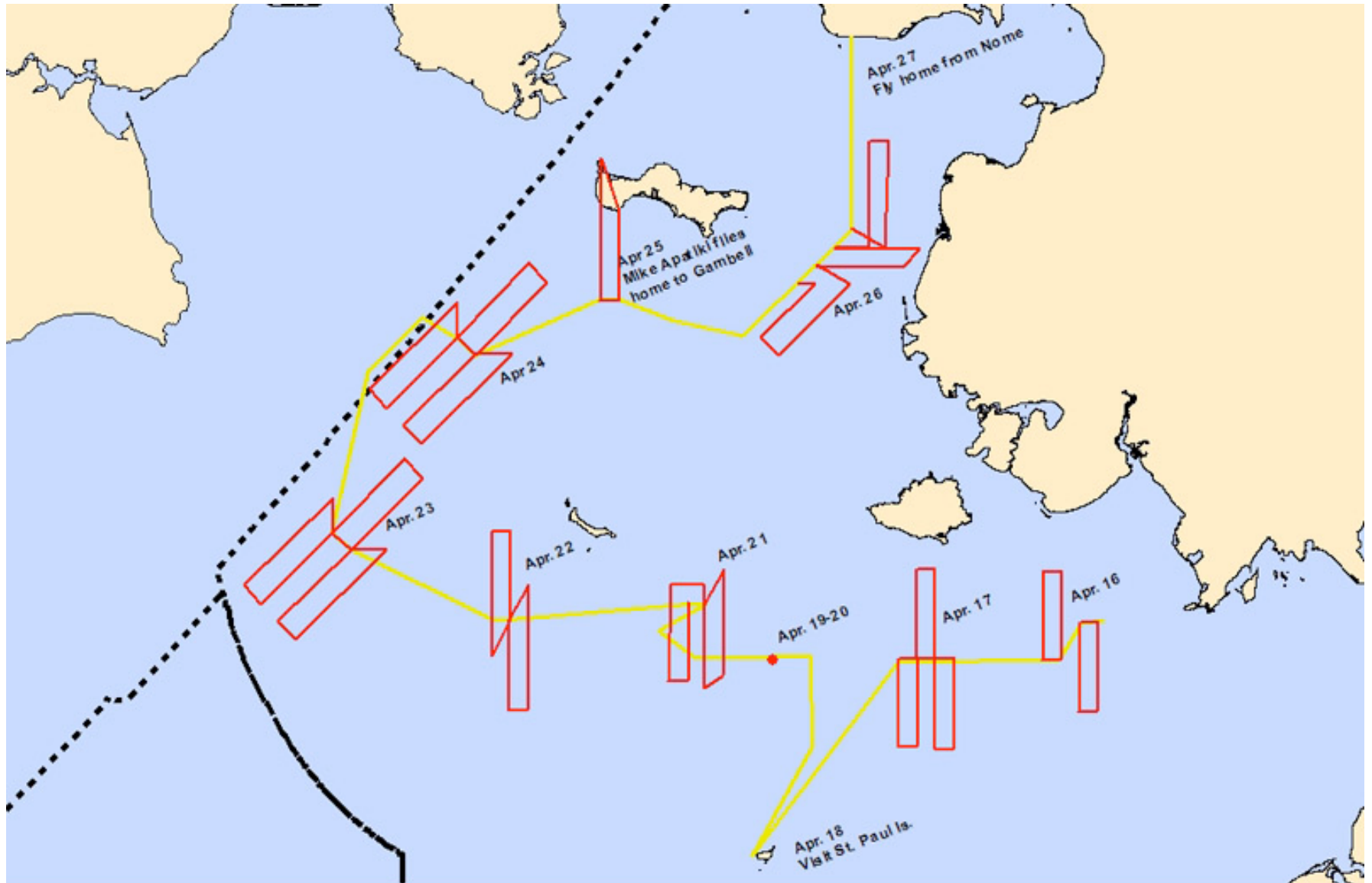
NOAA Seal Survey



Alaska Fisheries Science Center

NATIONAL MARINE FISHERIES SERVICE – NOAA FISHERIES

NOAA Seal Survey



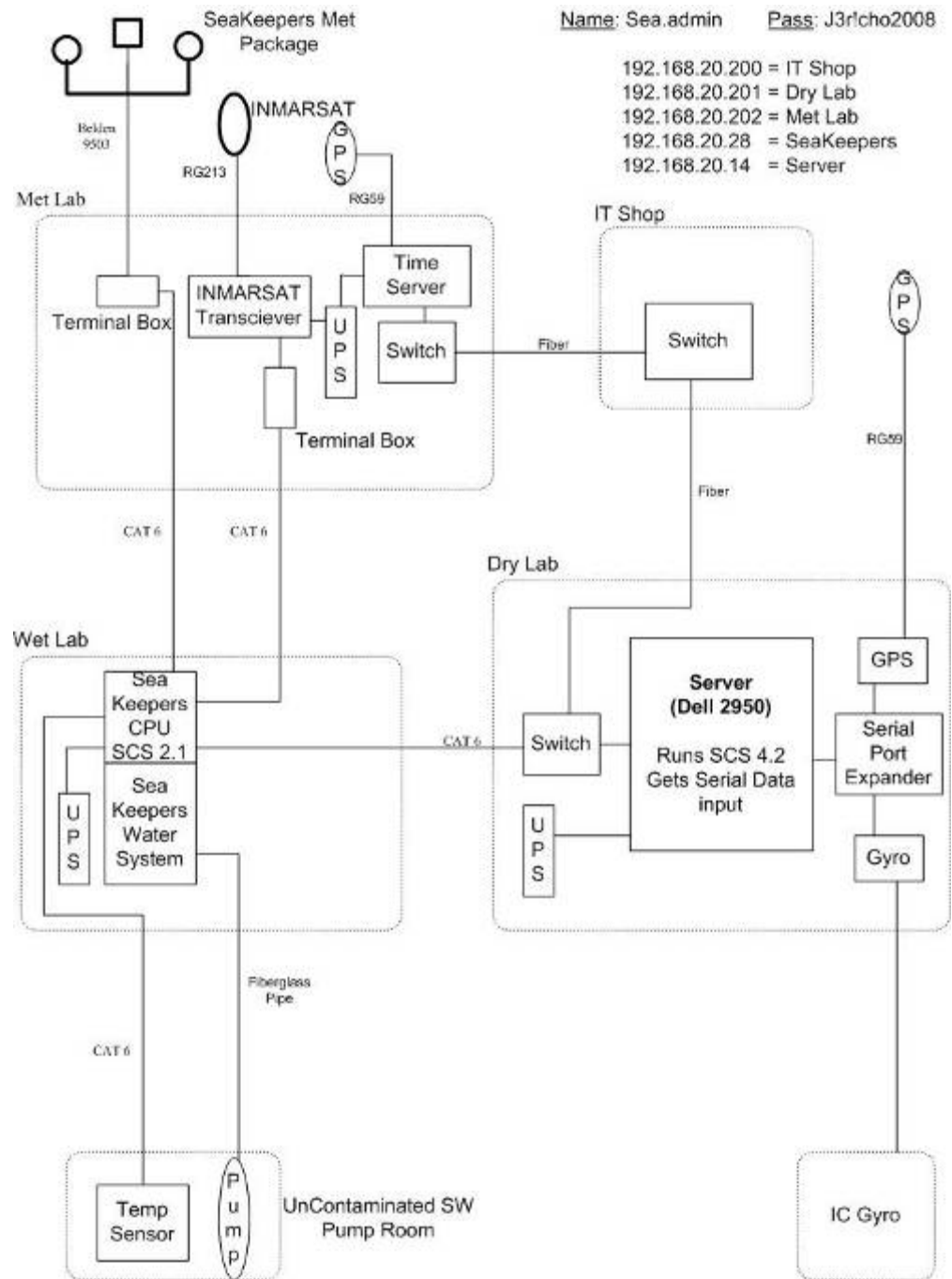
Map of *Polar Sea's* route (in yellow) and survey flights (in red). Dashed line marks U.S.-Russia boundary.

NOAA Seal Survey

- This cruise, together with helicopter surveys off of the *USCGC Healy* in 2007, is the most complete set of ice seal surveys in more than twenty years. As a result of global warming the reduction in sea ice has increased concern about the loss of these species' habitats. Indeed, NOAA has recently been petitioned to list the ribbon seal under the Endangered Species Act for this very reason. The decision of whether or not to list will certainly utilize data collected during these cruises.
- We would like to thank Captain Uchytel, the aviation detail, and all of the officers and crew of the *Polar Sea* and Air Station Kodiak. We are rarely so well supported by a ship's command and crew. Everyone had a clear commitment towards helping us achieve our mission, a genuine interest in, and excitement about our research, and was dedicated to helping us make the most of every opportunity. In all, the cruise was a terrific success for us and we look forward to working with the Coast Guard and the *Polar Sea* in future missions



Installed Environmental Sensor



In the Ice



Icebreaking!



Bering Sea Ice



Dutch Harbor



Qualification Earned on AWS '08

Helm/Lookout: 3
Boatswain's Mate of the Watch: 6
Junior Officer of the Deck: 3
Officer of the Deck, Underway: 2
Engineering Incinerator: 16
Engineering Security: 26
Engineering Auxiliary: 12
Assistant Engineer of the Watch: 11
Engineer of the Watch, Underway: 3
Boat Coxswain: 1
Officer of the Deck, Inport: 1
Engineer of the Watch, Inport: 7
Boarding Team Member: 2
Helicopter Control Officer: 2
Helicopter Flight Followers: 2
Helicopter Tie-down Team: 6
Helicopter Fire Team: 2





POLAR SEA Science Gear

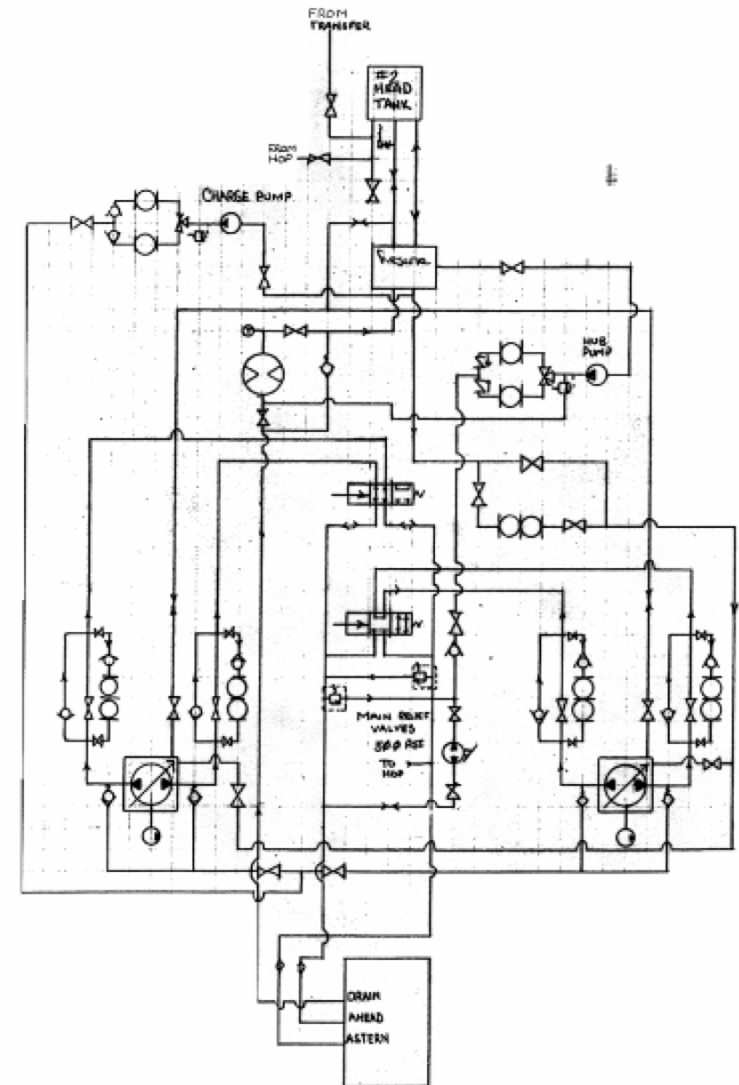


Open Loop Controllable Pitch Propeller System

C.P.P

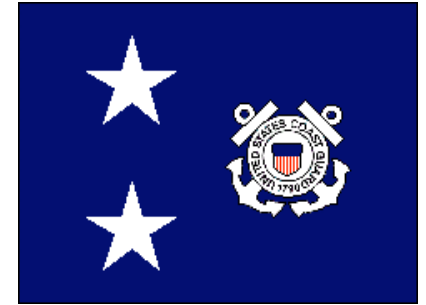
Advantages:

- better exchange of oil
- less complicated piping
- fewer valves/ filters
- less costly parts
- cheaper install.
- fixed displacement pump simpler
- better capability to purify
- easier to flush ppg
- pumps less sensitive





AWS'08 Praise from D17 Commander



“YOUR WORK IN PROSECUTING THE FULL RANGE OF NATIONAL MISSIONS ON THE ALASKAN FRONTIER WAS EXTREMELY NOTEWORTHY. OF GREATEST NOTE WAS YOUR DEVELOPMENT OF AN ORGANIC LAW ENFORCEMENT PROGRAM FROM THE GROUND UP.”

“SINCE THE PASSAGE OF THE MARINE MAMMAL PROTECTION ACT IN 1972, DATA REGARDING THE POPULATION OF THE BERING SEA SEALS HAS BEEN EXTREMELY LIMITED. THANKS TO YOUR EFFORTS, NOAA HAS BEEN ABLE TO COLLECT THE RAW DATA NEEDED TO STUDY AND ADDRESS THIS ISSUE.”

Life at Sea



Ready to Answer All Bells!

