

# R/V HUGH R SHARP

## Winch Complement

1. CTD Winch – Caley Scientific Smart Winch and Crane
2. Trawl/Coring – Dynacon Trawl/Coring winch
3. Portable Deck Winch - DYNACON 10010

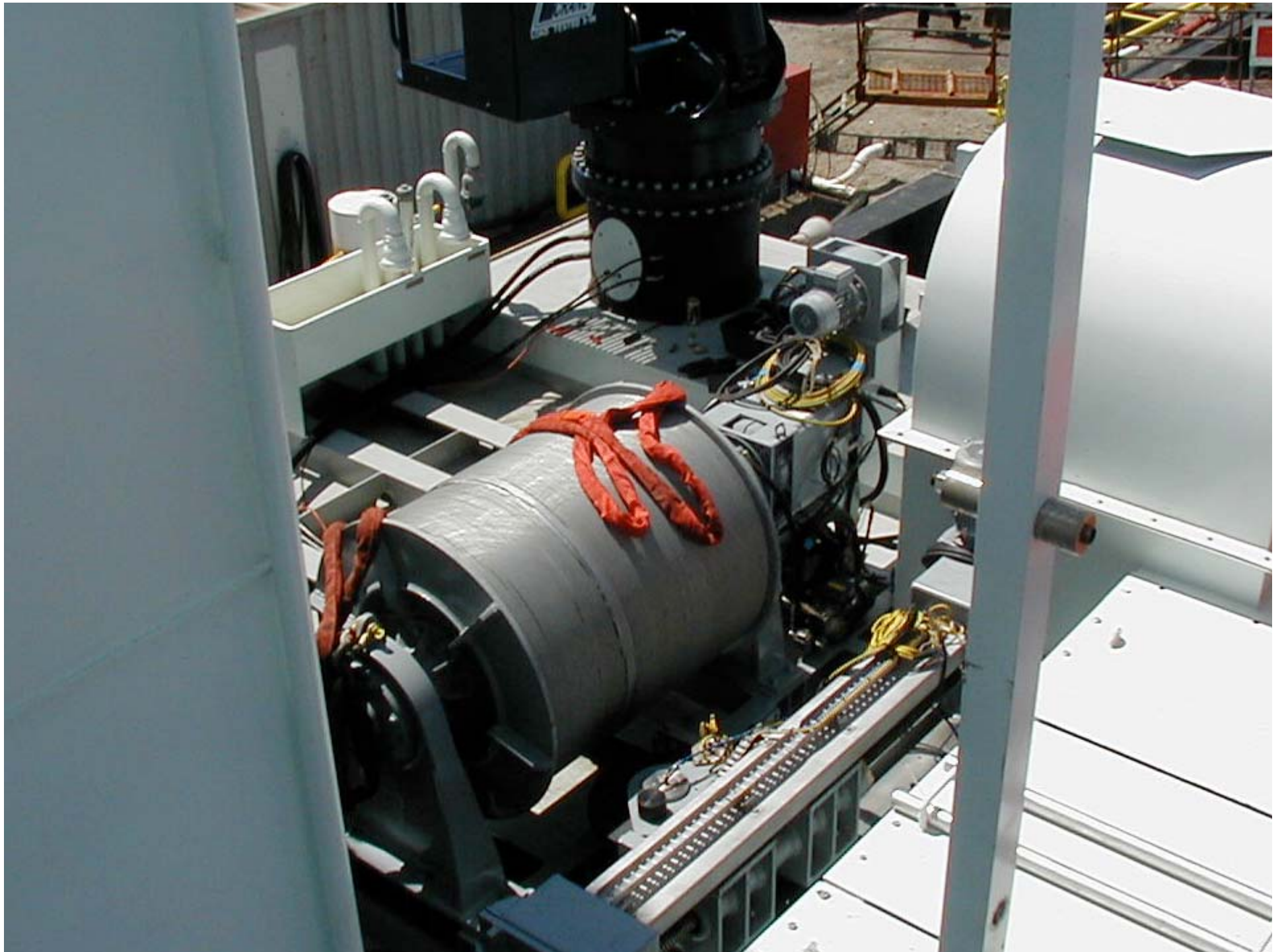
# Caley Scientific Smart Winch and Crane

Power	60 hp electric motor
Electro-Active Levelwind	
Auto render	Electric motor pay out limit set by operator
Primary use	CTD (w/ .322 cable)
Maximum Line Pull	6700lbs (3045 kg)
Maximum line speed	328 ft/min(100m/min ) top layer 393ft/min (120m/min) heave compensation

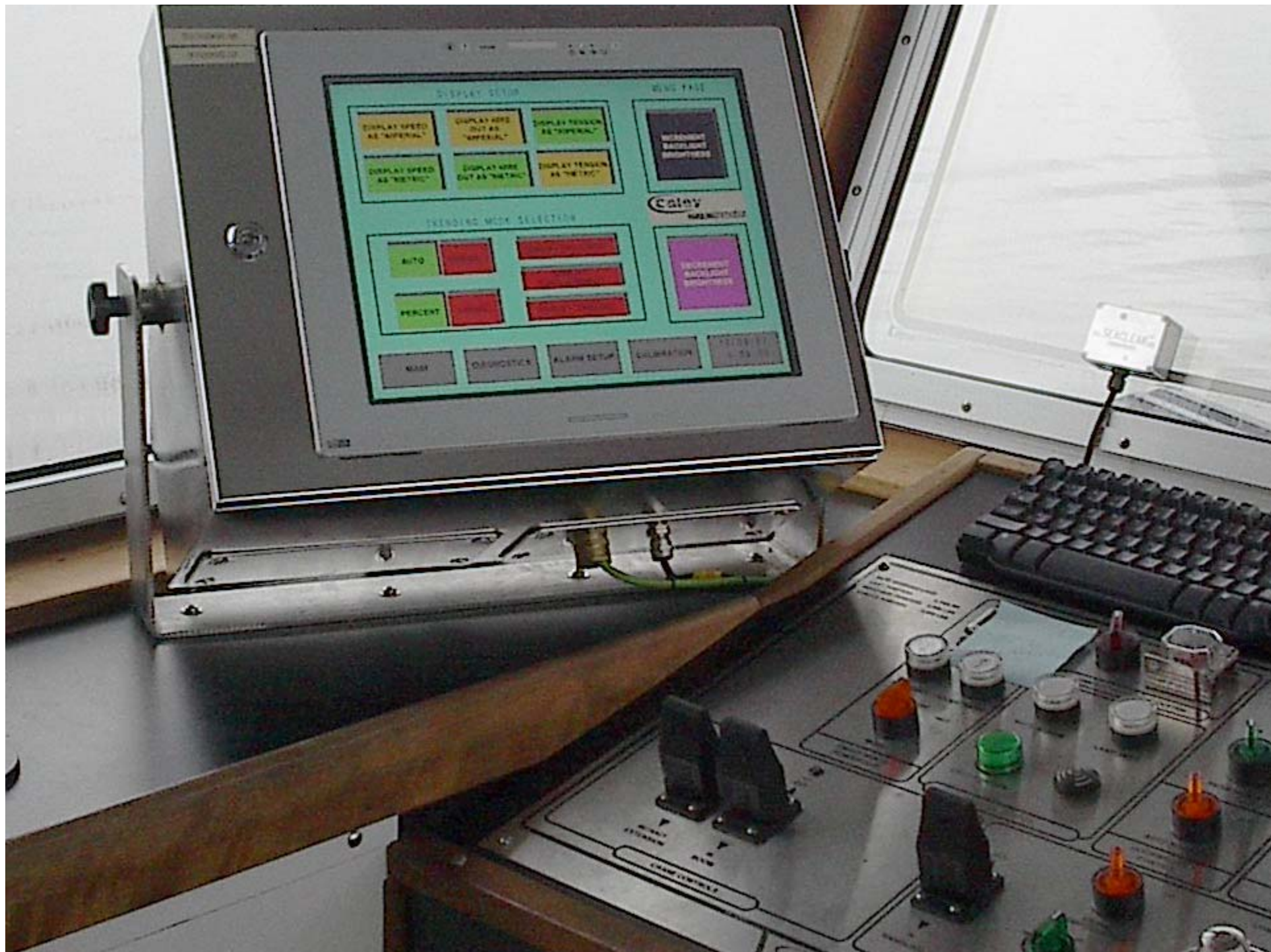
















# Dynacon Trawl/Coring Winch

Electric/Hydraulic      460 VAC 3 Phase, 60 Hz  
DYNACON-supplied 2 X 55 kW (2 X 75 HP)  
Electro-Hydraulic Power Unit

Electro-Active/Diamond screw (w/ 3 x 19 cable)

Factory set Auto Render (on/off by operator only)

Interchangeable Drums

Primary use              Trawl/coring (w/ 3,000m 3 x 19 wire rope)

Winch Drum Capacity    13,124 ft. (4,000 m) of 0.50 in. dia. 3 X 19 wire rope  
9,843 ft. (3,000 m) of 0.680 in. dia. cable

Safe Working Load      10,000 lbs.at 295 fpm  
20,000 lbs.at 147 fpm









# Portable Deck Winch - DYNACON 10010

Electric/Hydraulic	460/208 VAC 3phase 15KW (20hp) 3phase electric motor
Electro-Active levelwind	
Auto render	Disk brake (factory set 4,000lbs. )
Primary use	Scanfish
Capacity	9,800 ft (3,000m) 0.25 cable (0.498 in. cable installed)
Line Pull	4,000 lbs. bare drum @ 115 fpm 1,800 lbs @ full drum
Cable speed	197 fpm @ mid-drum



