

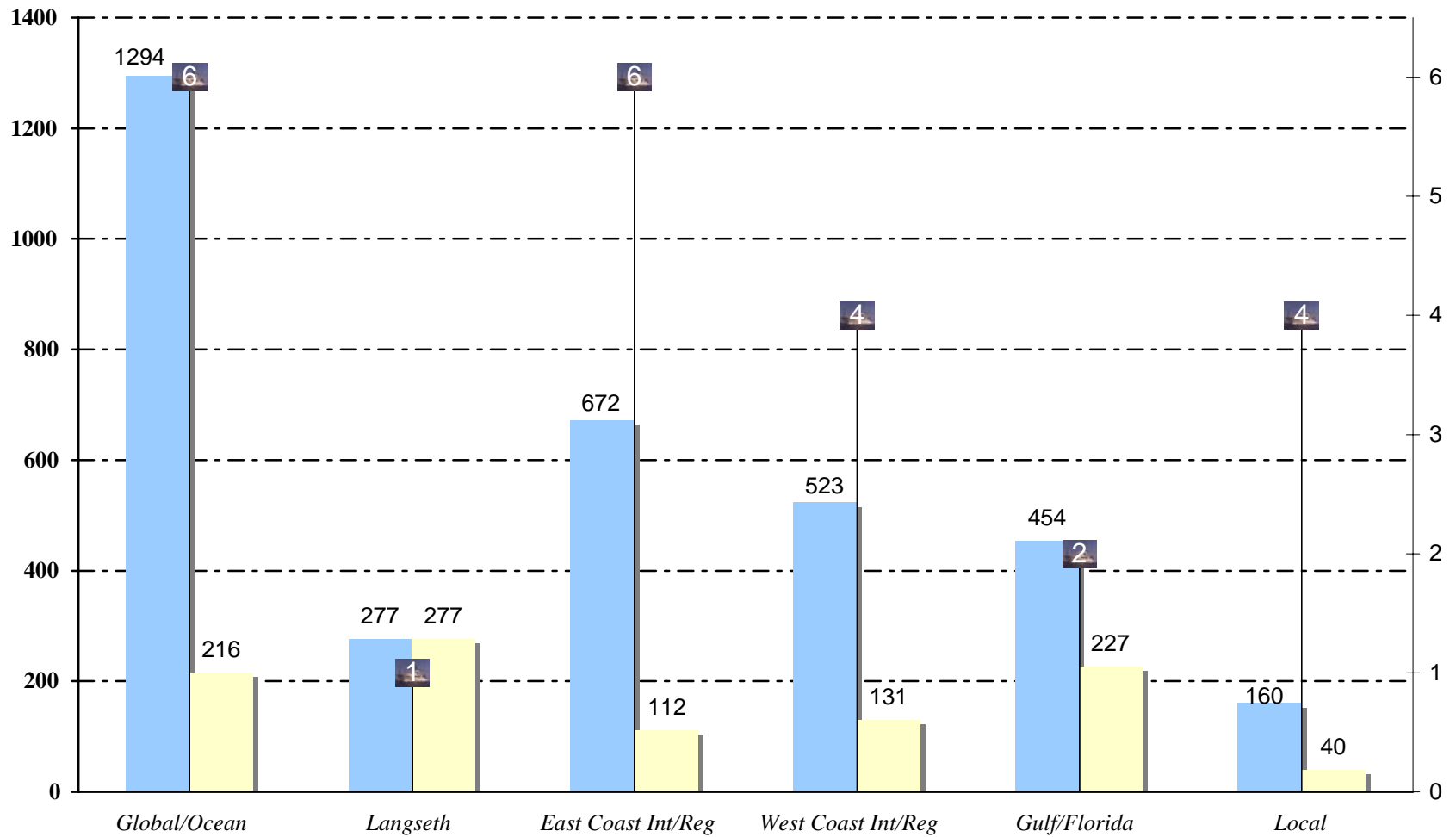
# Ship Scheduling - 2008

SSC report to UNOLS Council  
February 7, 2008

July, 2007

**2008 Shiptime Requests per Vessel Class/Region\***  
(\* Funded NSF and Funded or Pending Requests for other agencies)

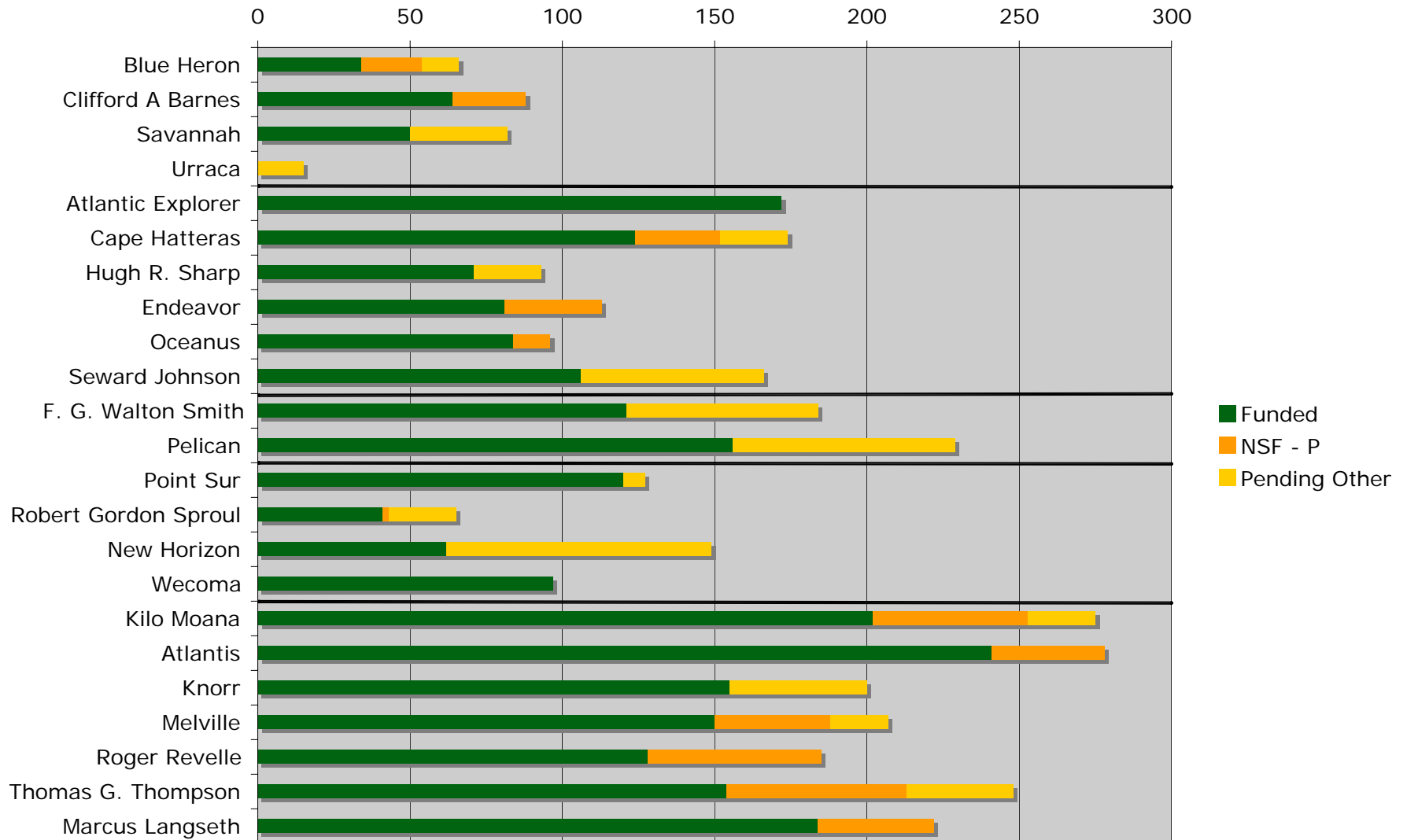
2008 Requested Days Per Ship # ships



July, 2007

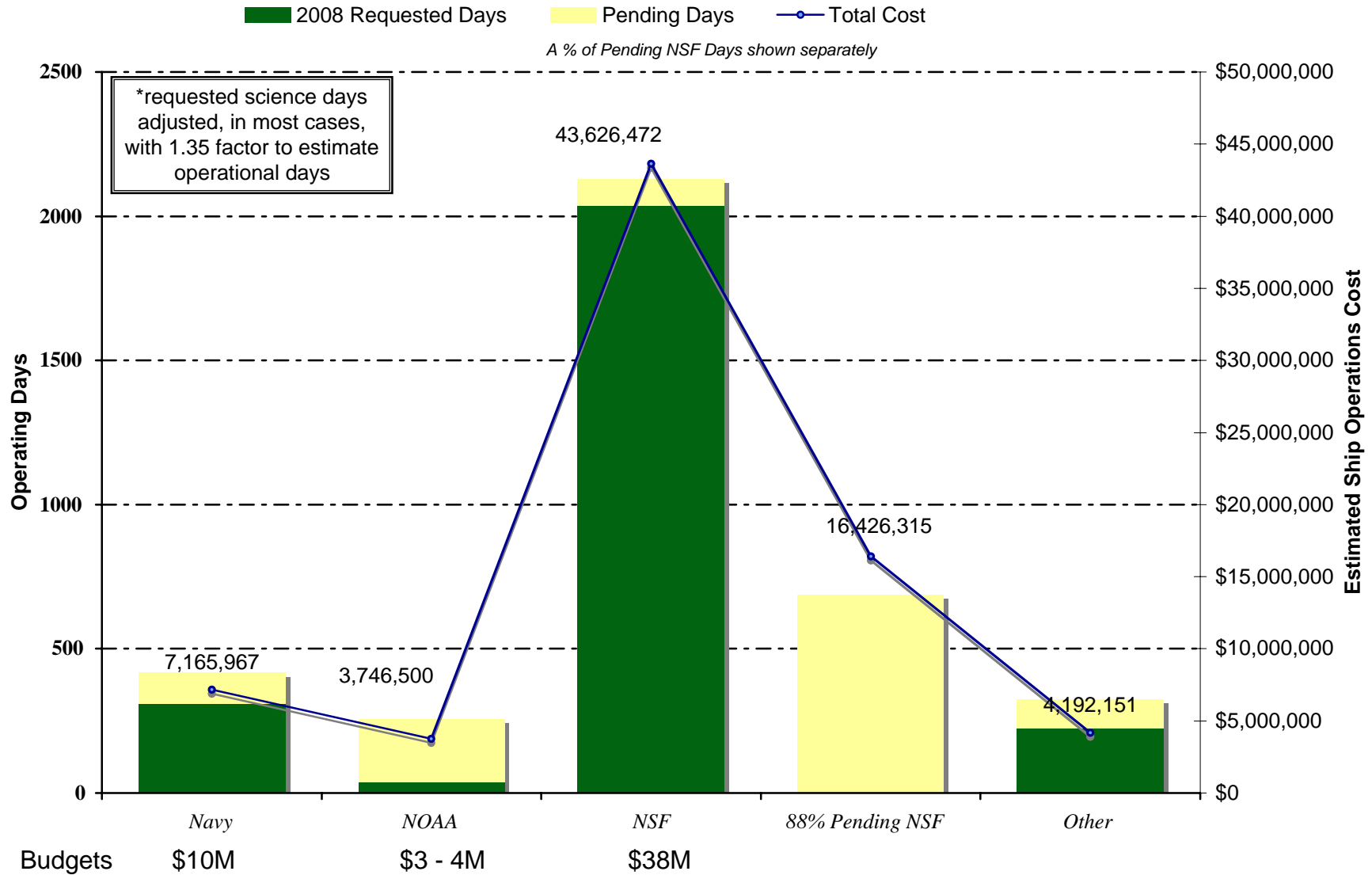
\* These totals include nearly 365  
Days of double booked work and  
several pending NSF projects .

### Ship Totals Status



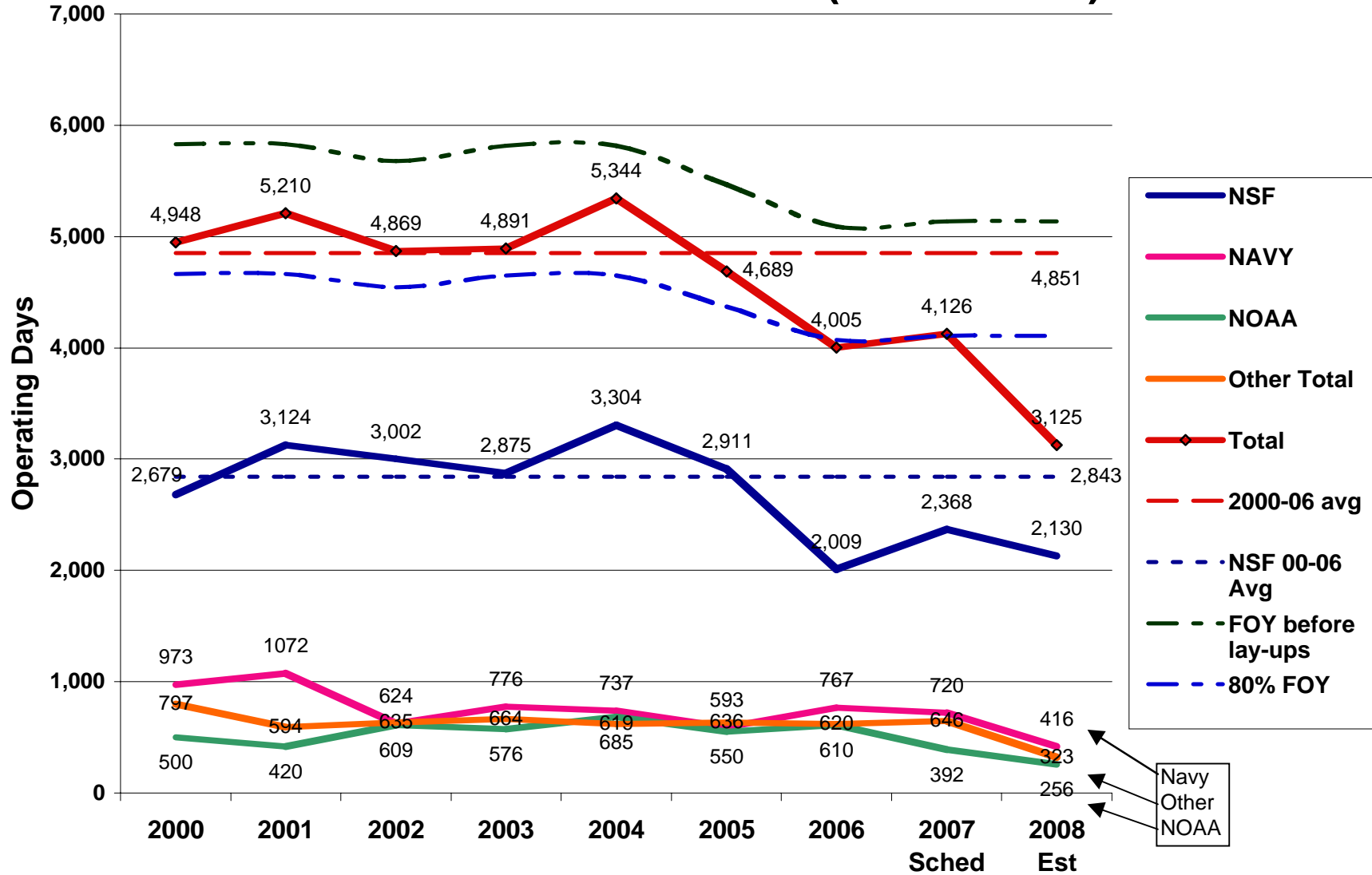
July, 2007

2008 Funded and Pending Requests \*



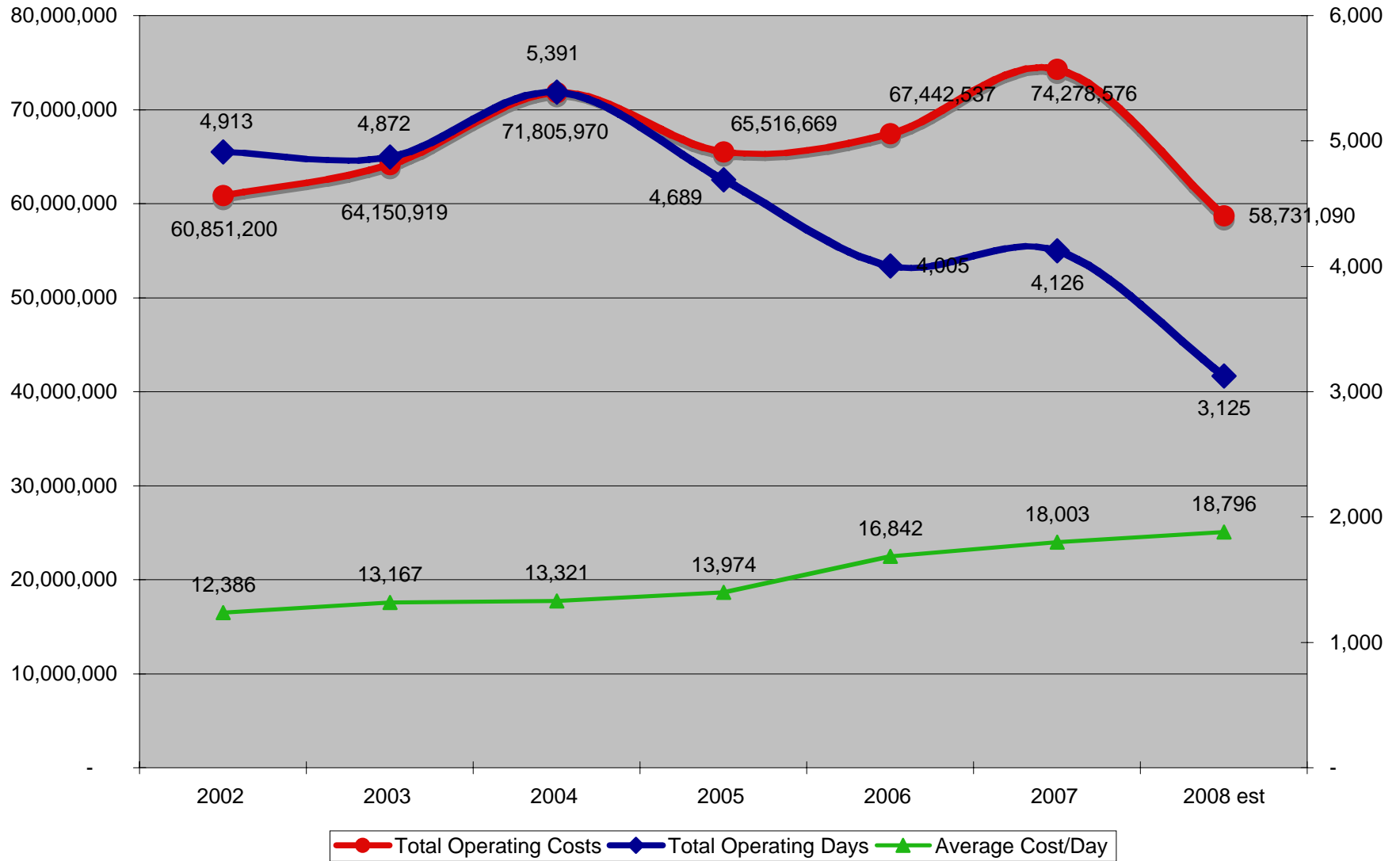
July, 2007

## UNOLS Fleet Utilization (2000 - 2008)



July, 2007

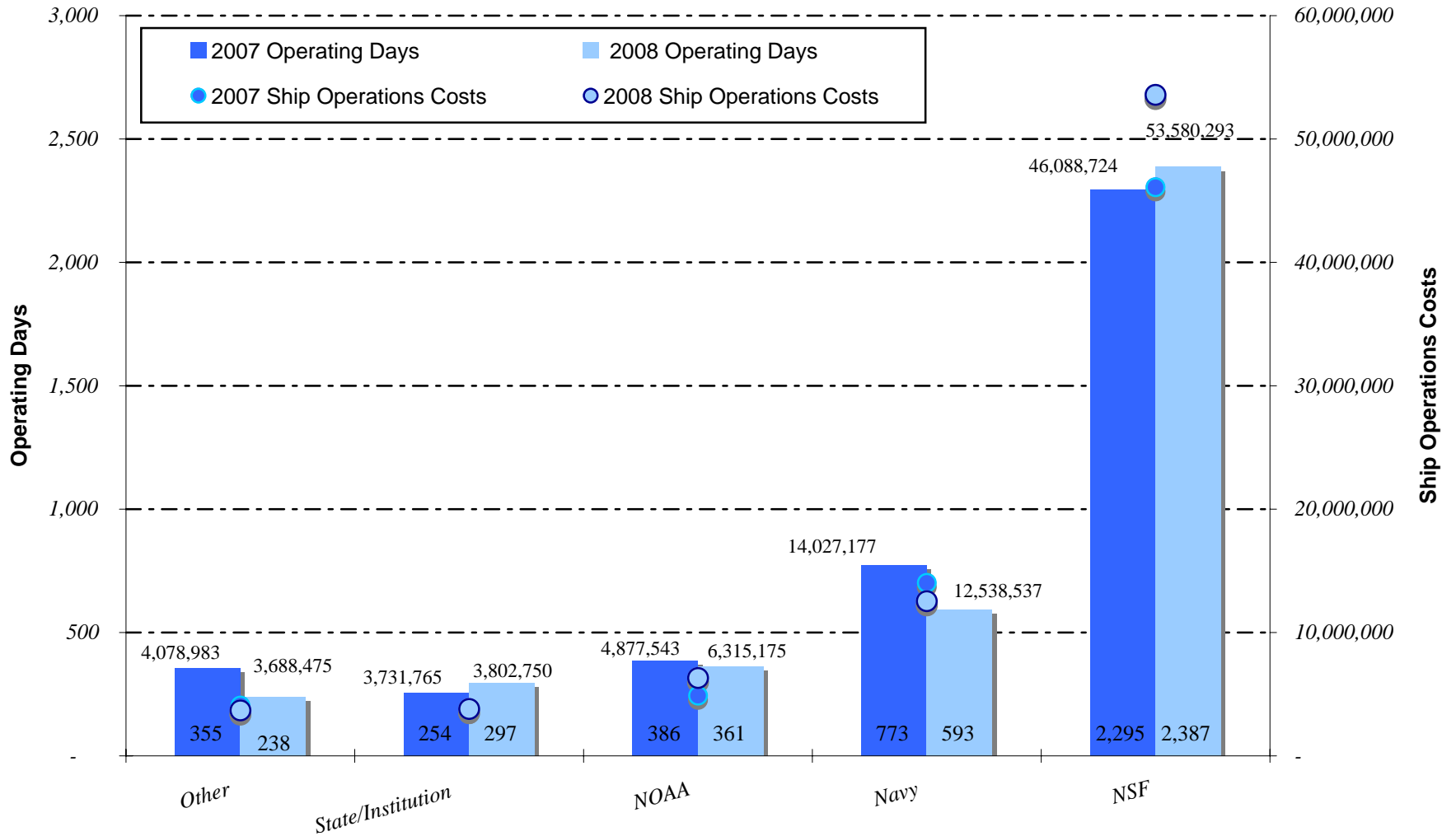
2002 - 2008 UNOLS Fleet Operating Days and Costs



October, 2007

### 2008 Operating Days and Estimated Cost by Agency

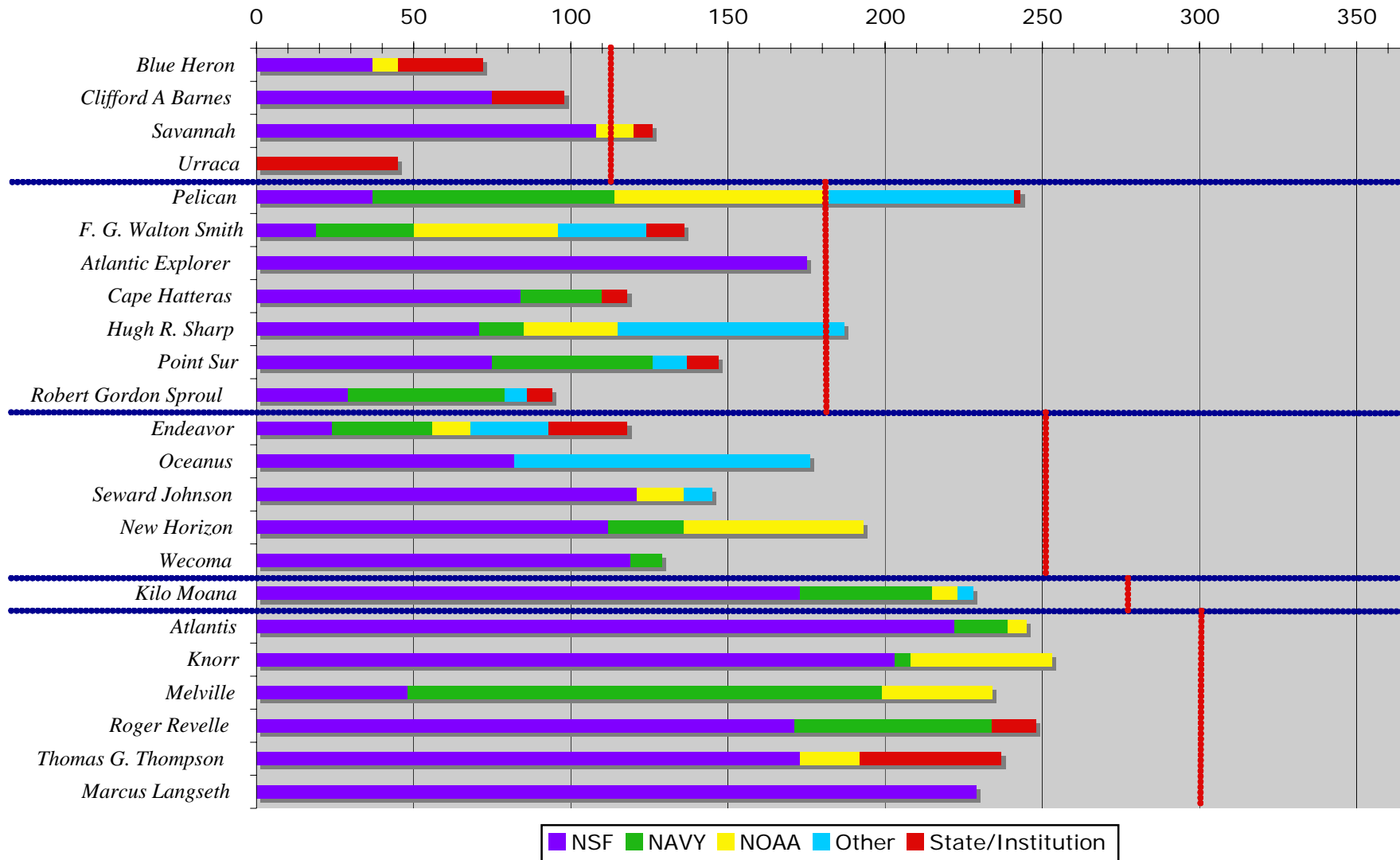
(Ship Operation Costs Only)



October, 2007

2008

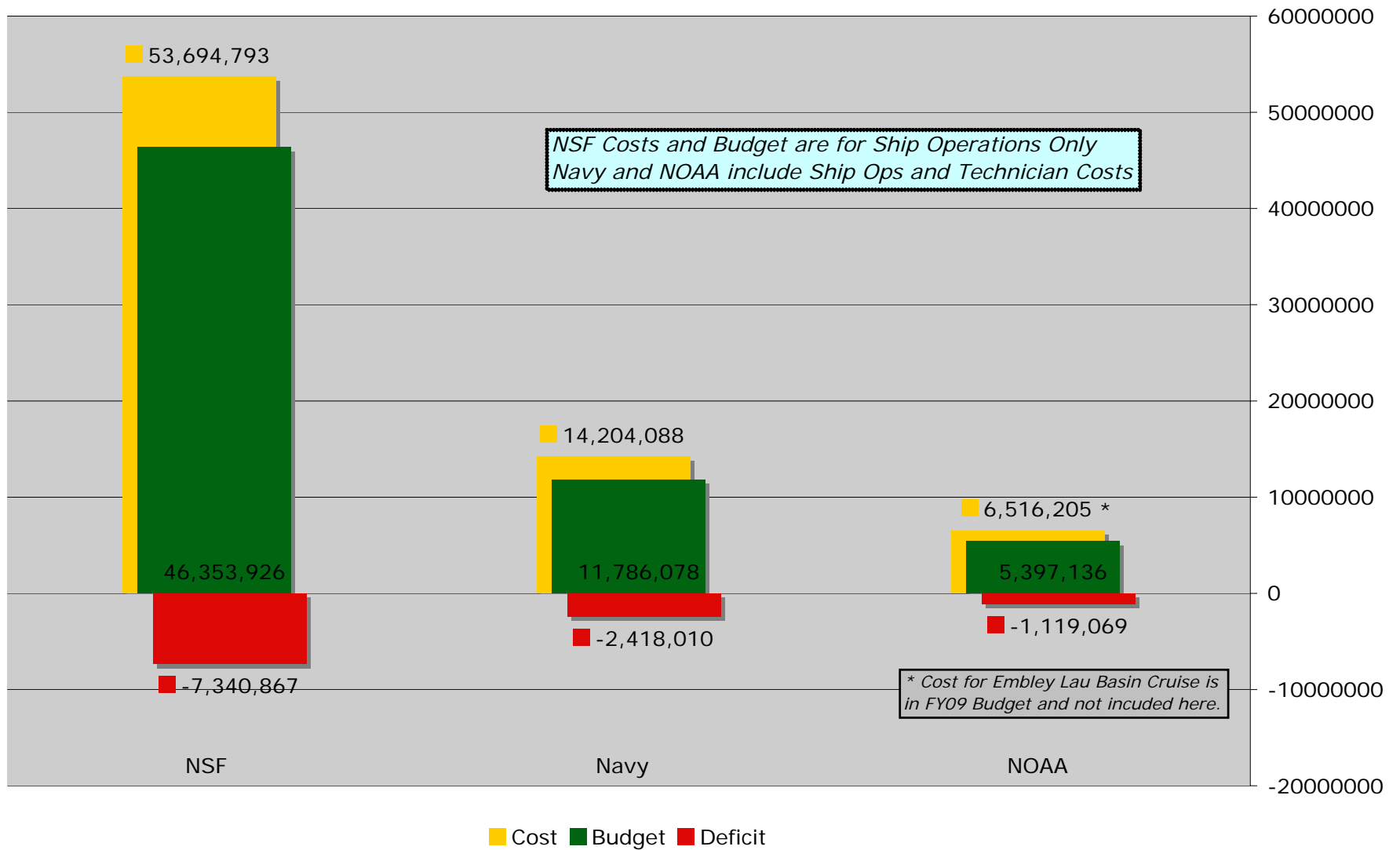
### 2008 UNOLS Operating Days by Agency





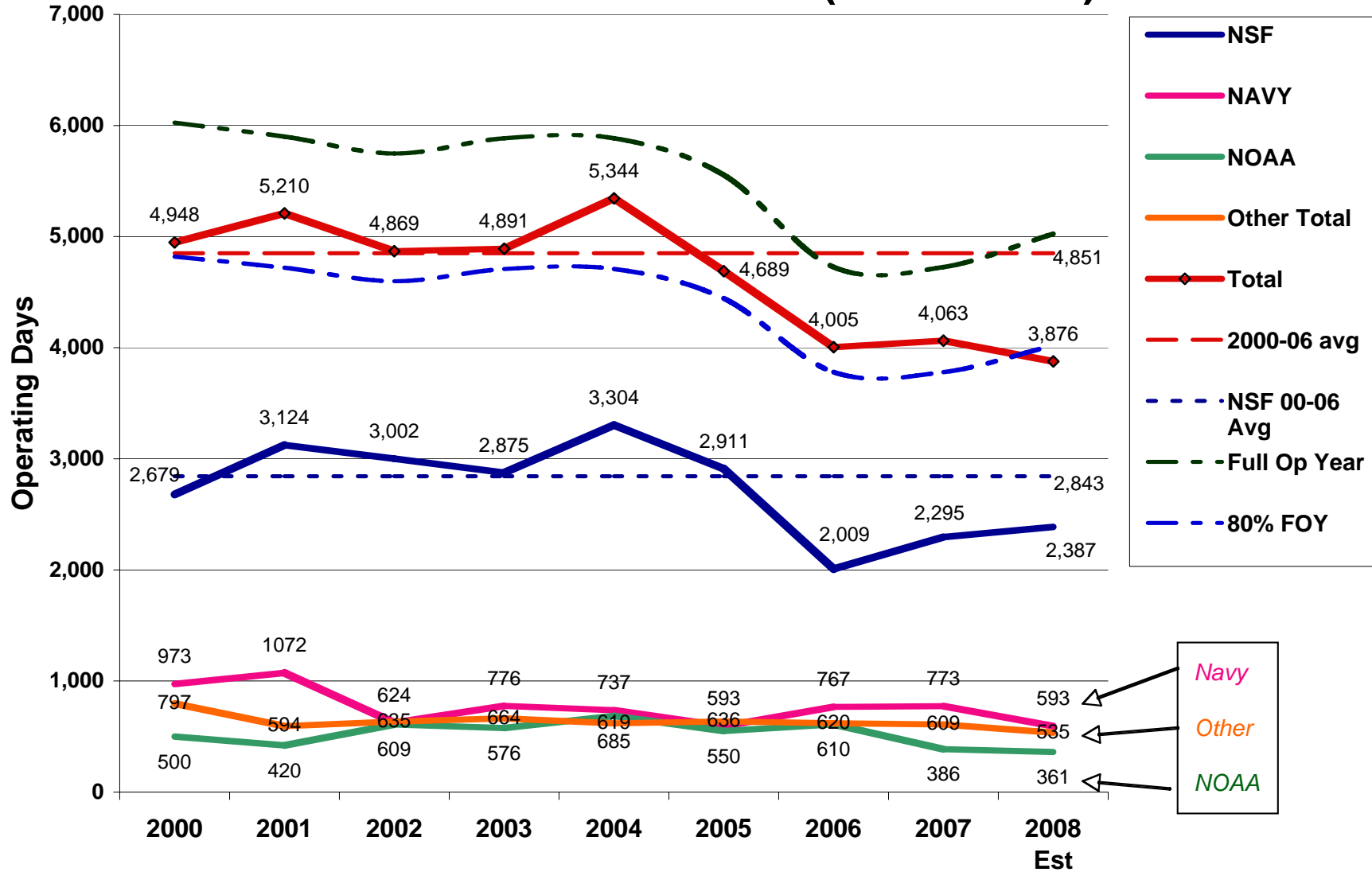
October, 2007

2008 Projections of Costs & Budgets for NSF, Navy and NOAA



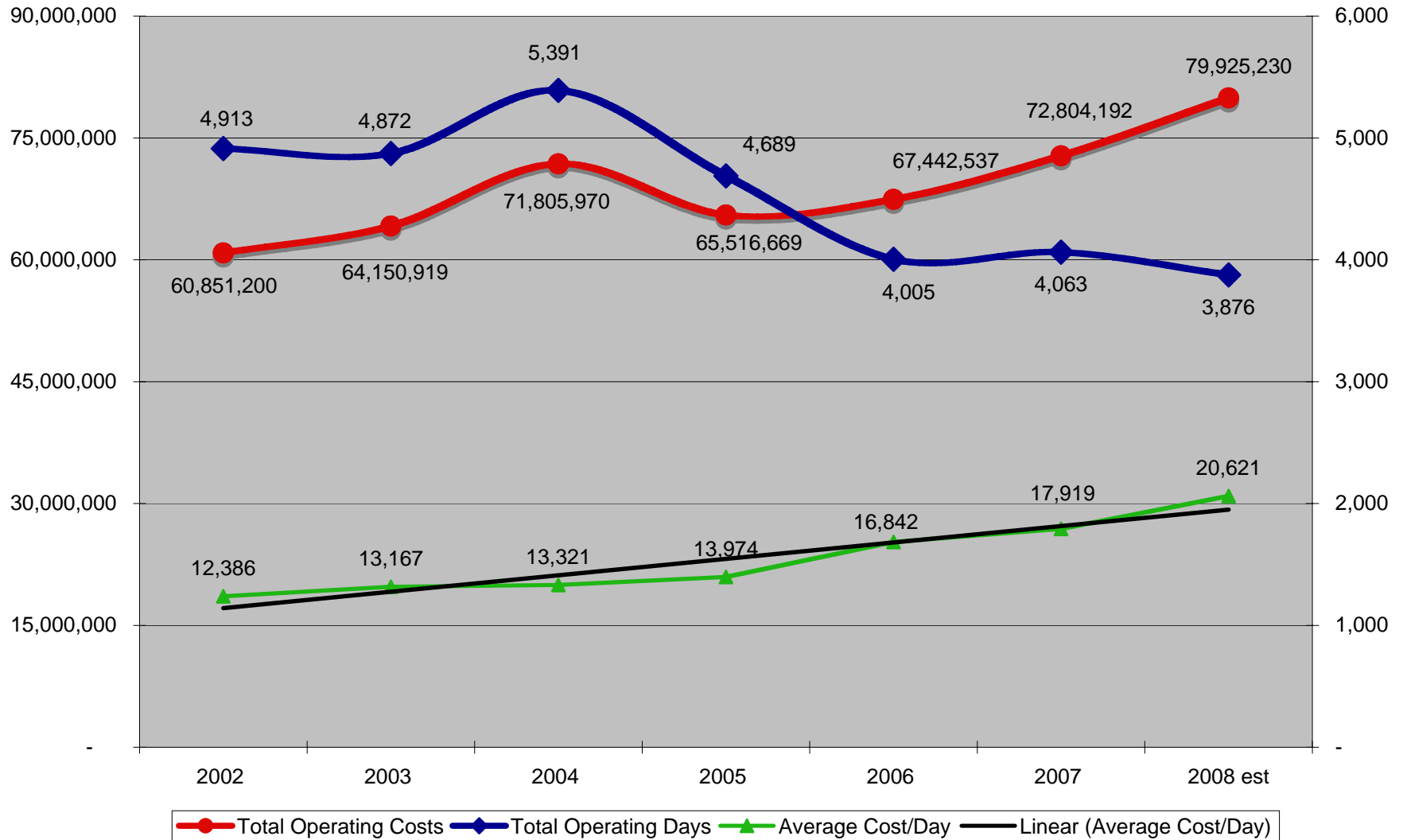
October, 2007

## UNOLS Fleet Utilization (2000 - 2008)



October, 2007

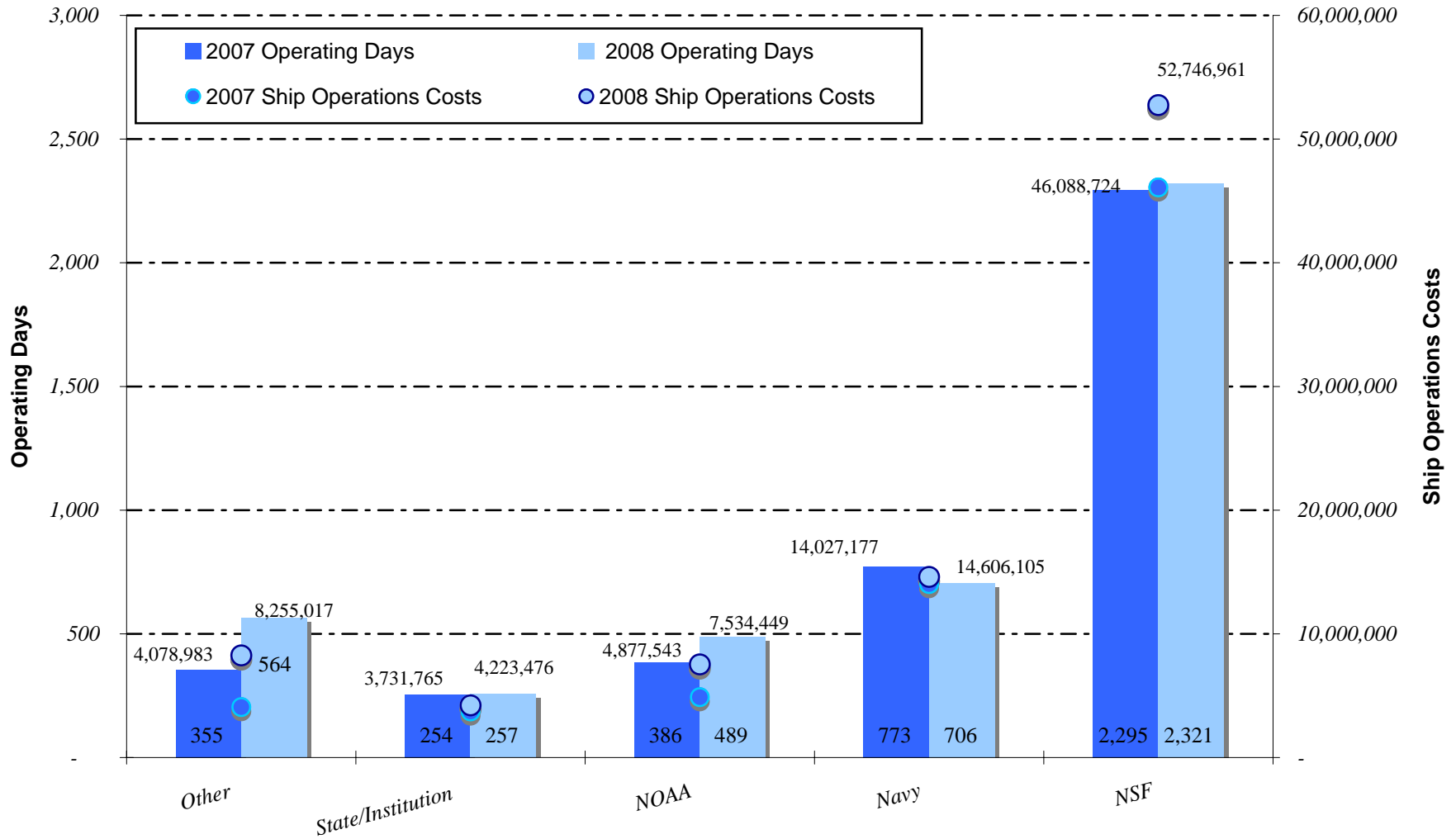
2002 - 2008 UNOLS Fleet Operating Days and Costs



Jan. 30, 2008

### 2008 Operating Days and Estimated Cost by Agency

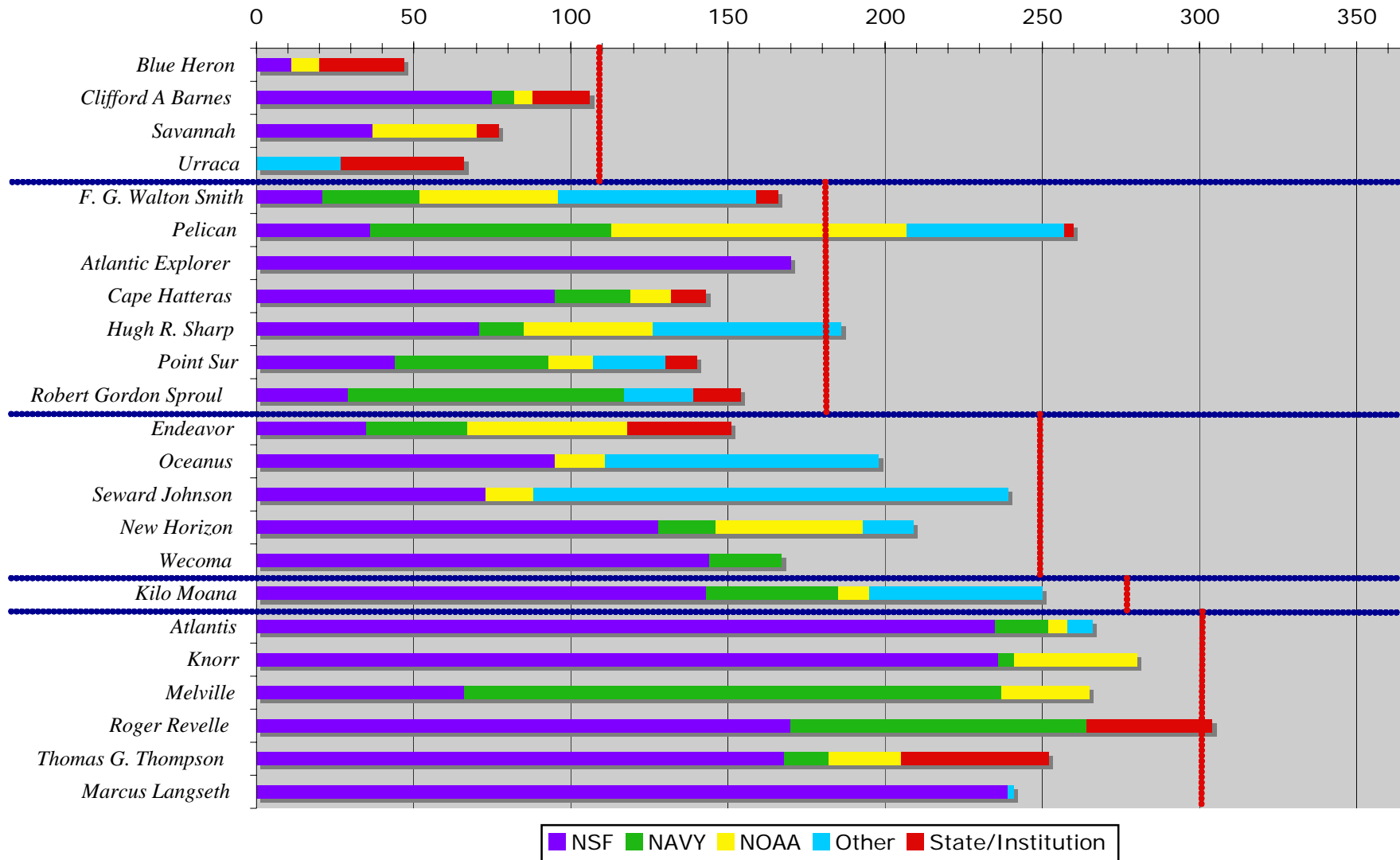
(Ship Operation Costs Only)



Jan. 30, 2008

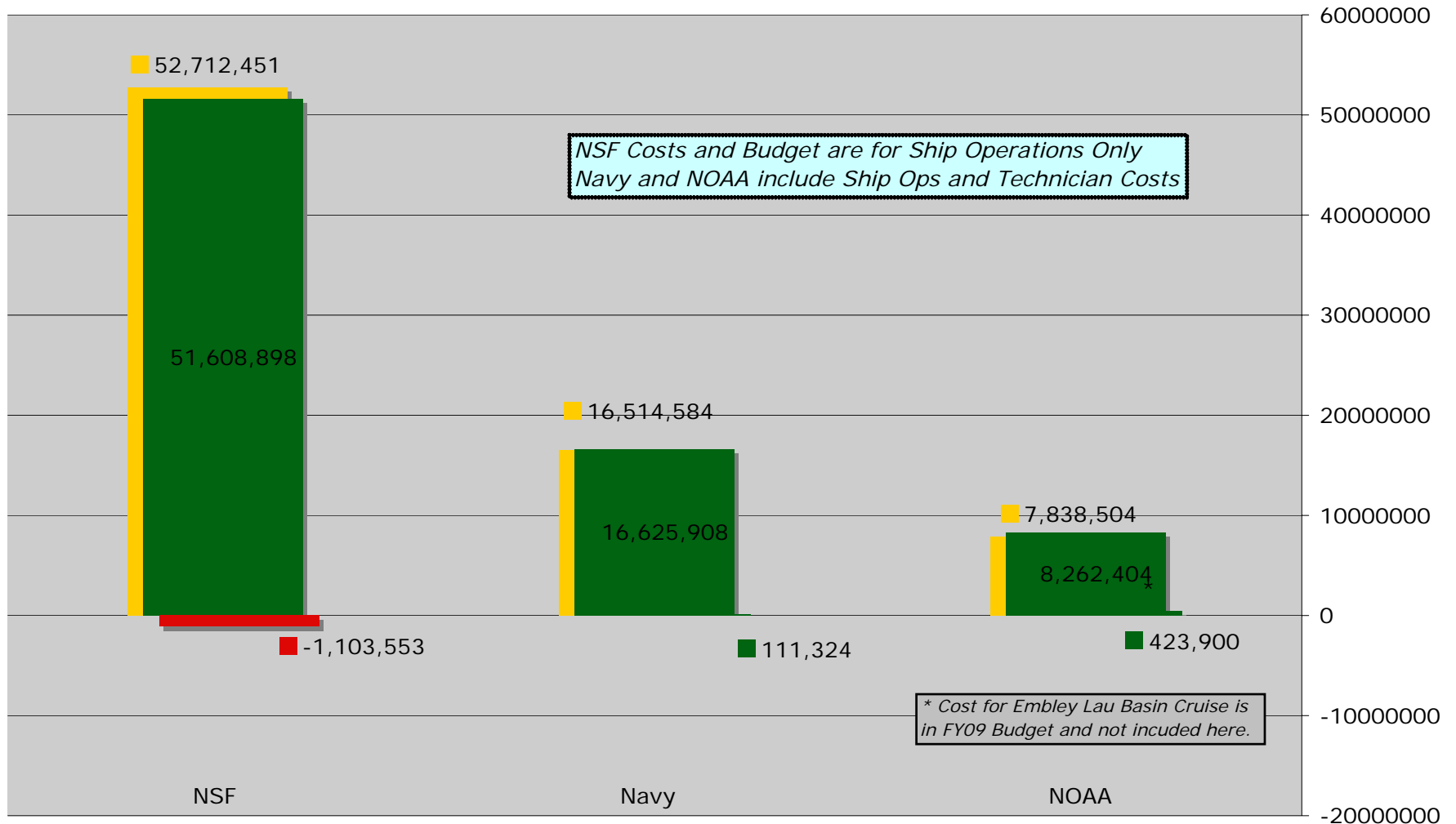
2008

### 2008 UNOLS Operating Days by Agency



Jan. 30, 2008

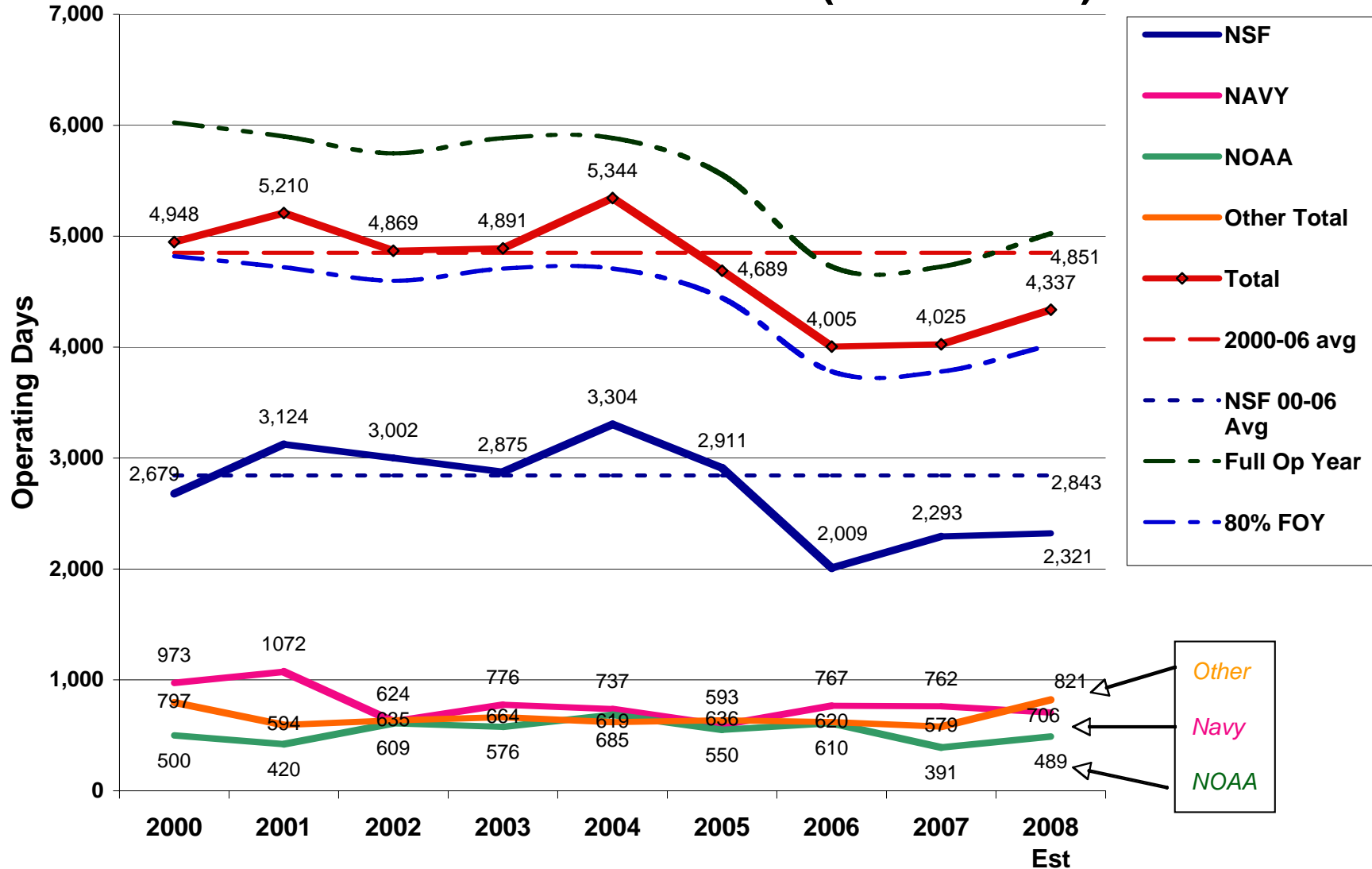
2008 Projections of Costs & Budgets for NSF, Navy and NOAA



■ Cost ■ Budget ■ Deficit/Surplus

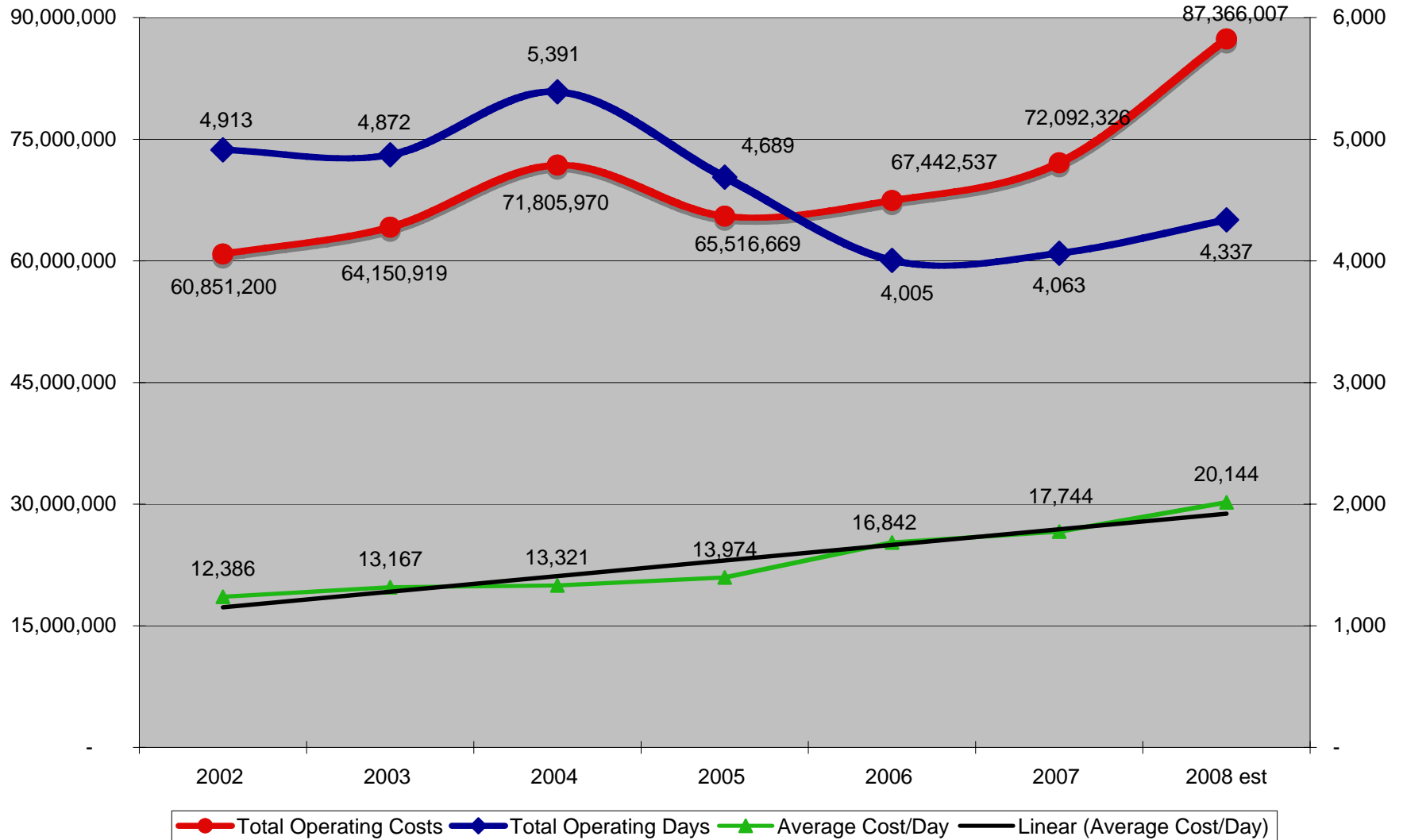
Jan. 30, 2008

## UNOLS Fleet Utilization (2000 - 2008)



Jan. 30, 2008

### 2002 - 2008 UNOLS Fleet Operating Days and Costs





Jan. 30, 2008

### 2003 - 2008 UNOLS Fleet Operating Days and Costs

