

ALASKA REGION RESEARCH VESSEL ACQUISITION STATUS



UNOLS Annual Meeting
11-12 October 2007

Cooperative Agreement – 7 August 2007

- **Phase 1 – PEP & Design Refresh**
- **Phase 2 – Bid Package Prep & Shipyard Selection**
- **Phase 3 – Construction**
- **Phase 4 – Pre-operation Testing/Trials**

Each phase requires oversight review and approval before proceeding to the next phase

Phase 1 Tasks

- a. Develop the Project Execution Plan (PEP)
- b. Establish EVM Report System for Project
- c. Initiate EVM Training for key personnel
- d. Form a Users Oversight Committee.
- e. Enhance the Project Team
- f. Update the existing design package,
including a Contingency/De-scoping Plan
- g. Update existing cost estimate
- h. Obtain letters of interest and qualification
from potential Shipyards

9 months \$2,582,193

Phase 2

- a. Develop Acquisition Plan/Procurement Plan (for NSF review)
- b. Develop Statement of Work and Request for Proposal (for Shipyard)
- c. Evaluate Proposals, and Award Shipyard Contract
- d. Shipyard Design Verification
- e. Order Long Lead Items
- f. Keel Laying
- g. Baseline Review

3 months

\$809,253

Phase 3

- a. Vessel Construction
- b. Launch
- c. Vessel Science Outfitting
- d. Completion of Sea Trials and delivery to UAF

24 months \$112,525,123

Phase 4

- a. Completion of Installation of Science Equipment/Outfit
- b. Vessel Science Testing Cruise
- c. Ice Testing
- d. Completion of warranty period
- e. Warranty Drydocking

12 months \$7,013,649

Budget Projections

Year 1 = \$ 2,582,193

Year 2 = \$ 50,000,000

Year 3 = \$ 60,000,000

Year 4 = \$ 10,000,000

Year 5 = \$ - 0 -

Total = \$ 122,930,218

(not to exceed)

Schedule

7 August	Received Cooperative Agreement
7 August	Started PEP
17 Sept	First Oversight Meeting
15-16 Oct	Risk Management Workshop
22-23 Oct	Review Science Equipment
1 Nov	Draft PEP
7 Nov	Complete PEP
Dec?	Draft Design Refresh
Jan?	De-scoping Plan completed
7 May 08	Complete Phase 1

May-July 2008

Phase 2

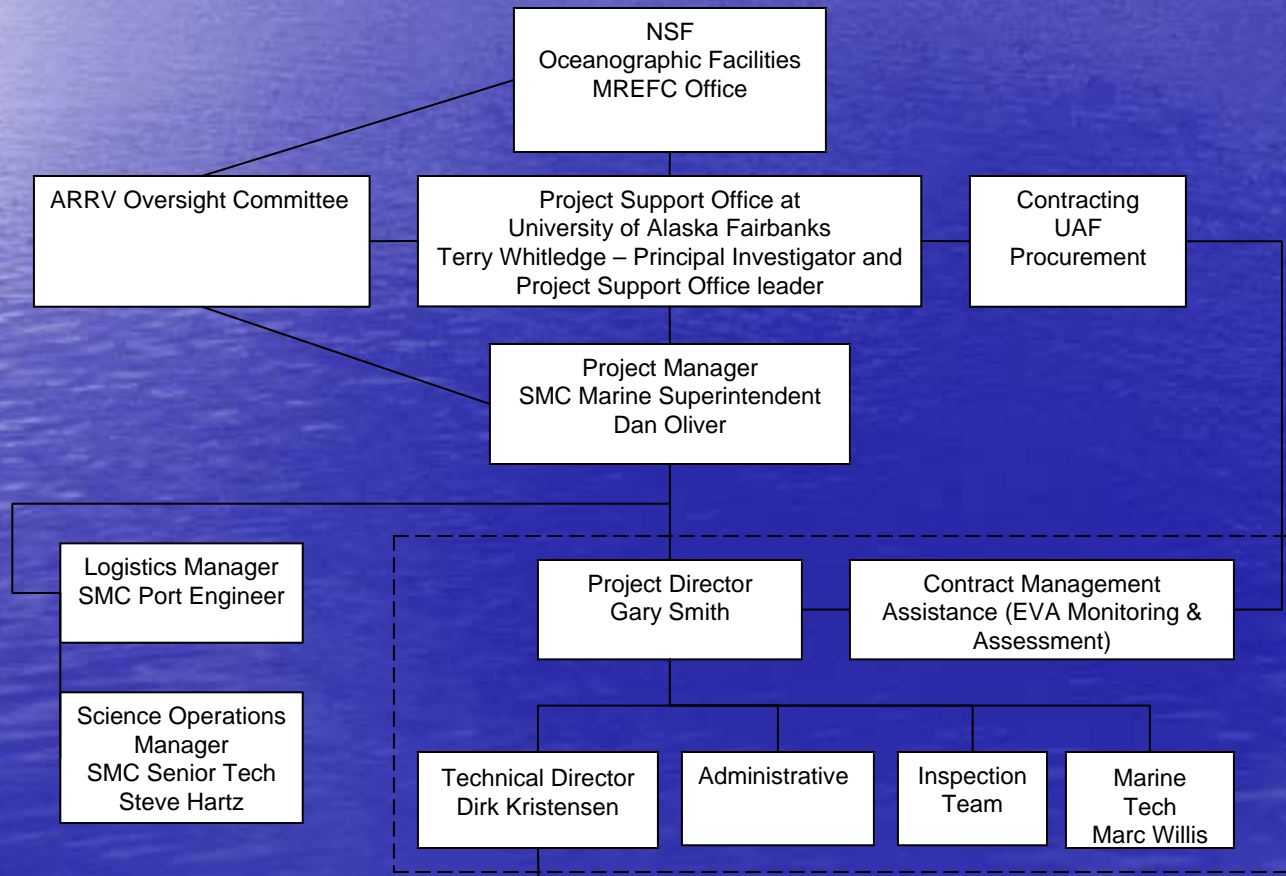
Aug2008-July2010?

Phase 3

Aug2010-July2011?

Phase 4

Organizational Structure



Key Project Personnel

Terry Whitledge, Principal Investigator in Project Support Office

Daniel Oliver, Co-PI and Project Manager

Denis Wiesenburg, Co-PI and UAF Oversight

Michael Grahek, UAF Contracting Procurement and UAF EVM

Rosanne Bailey, UAF EVM Oversight

Gary Smith, Project Director

Marc Willis, Shipyard Marine Technician

Dirk Kristensen, Engineering Support

Steve Nourse, Contract Legal Advisory

TBD, Shipyard Contract Management Assistant and EVM

TBD, Shipyard Administrative Assistant

TBD, Shipyard Inspection Manager

TBD, Project Logistics Manager/SMC Port Engineer

Steve Hartz, SMC Science Operations Manager

Laura Nunemann, Project Support Office Assistant

Oversight Committee

Naval Architect – TBD

Polar Marine Scientists

Chemical – Hedy Edmonds, U Texas

Geological – Margo Edwards, U Hawaii (Chair)

Physical – Jim Swift, Scripps

Marine Superintendents

East Coast -- Al Suchy, WHOI

West Coast—Fred Jones, Oregon State U

Marine Technical Specialists

Mary Lynn Dickson, U Rhode Island

Christian de Moustier, U New Hampshire

Alaska Native/Coastal Community

TBD

NOAA Fisheries

Mike Sigler, Alaska Fisheries Science Center

Reporting & Communications

Weekly – Project Conference call

Weekly – Project Status Report to NSF

Monthly – Oversight Committee meeting

Monthly – EVM Report Required

End of Phase – Oversight Review

Audio Conference calls

Video Conference calls

Project Website

Project ftp site

<http://www.sfos.uaf.edu/arrv>

Project Execution Plan (PEP) Outline

UAF shall fully develop the PEP as set forth below.

1. Organizational Structure
2. Baseline Project Definition
3. Work Breakdown Structure (WBS)
4. Risk Assessment and Management
5. Contingency Management
6. Configuration Management and Change Control
7. Quality Assurance and Quality Control Program
8. Safety, Environmental and Health Issues
9. Financial and Business Operations Controls
10. Plans for System Integration, Commissioning, Testing and Acceptance
11. Plans for transitioning from construction and/or acquisition to operations:

90 days (7 Aug – 7 Nov 2007)