

Ship Scheduling and Utilization Report

UNOLS Annual Meeting
October 11 & 12, 2007

Draft 1



Teleconference Calls

Following the summer council meeting schedulers held teleconferences in July. One meeting each for east and west coast intermediate/regional schedulers and one for the global/ocean class schedulers.

East and west coast intermediates/regional schedulers were tasked to independently recommend options that would consolidate work on fewer ships. Problems were encountered as multiple requests for specific periods of time made it difficult to efficiently consolidate without moving science programs out of desired time and or weather windows.

Face-to-Face meeting

The SSC held a meeting here at NSF 19 September.

The scheduling meeting began with a review of the schedules, later breaking up to small groups to work out problems including double bookings and to gain better knowledge of specific science needs.

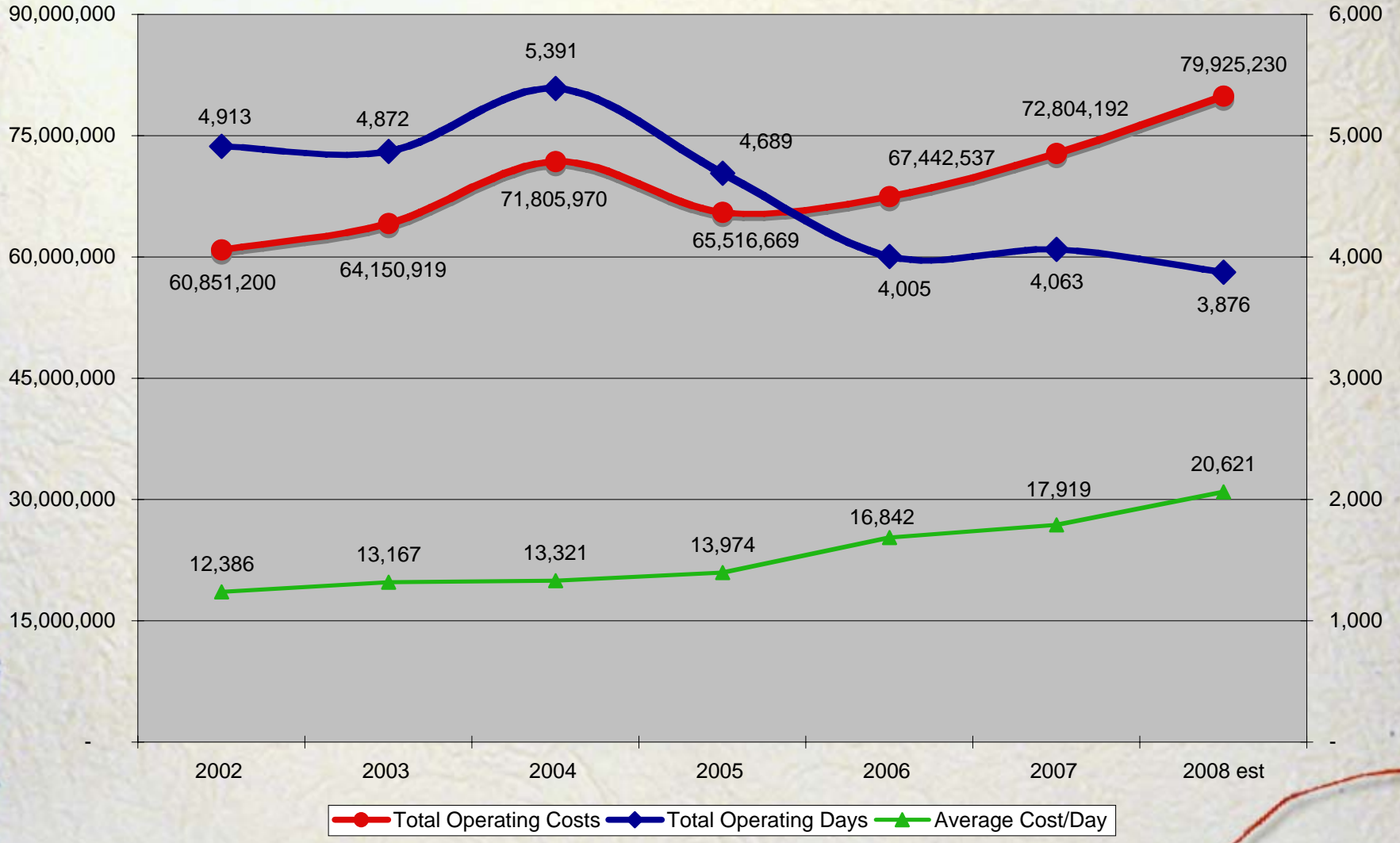
The recommendation by ONR not to lay up any of the AGOR's remained unchanged. The current preference is to continue to divide the total number of funded days among the 6 vessels.

Face-to-Face meeting

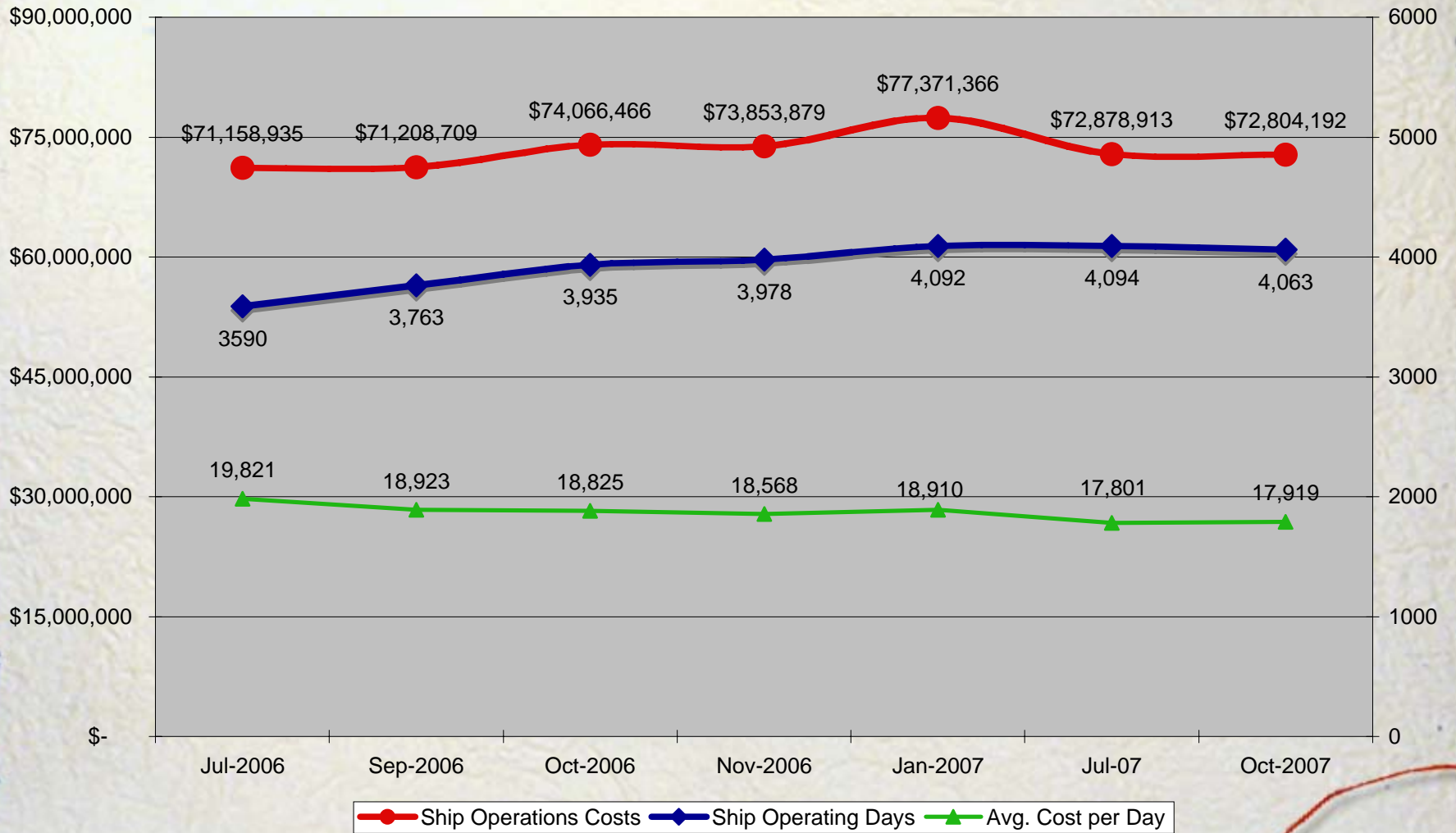
At the conclusion of the meeting, the recommendation was made for schedules to identify stand down periods, especially for the AGORS and to fine-tune the daily rates. (Once the individual schedule details are worked out a better rate can be developed followed by the submission of the NSF and ONR ship operation proposal.)

Schedulers were advised that the rates should be developed with the assumption of no lay up support. The agency program managers asked institutions to identify carry forwards. Schedulers were advised by the funding agencies not to post 2008 schedules from their current position of letters of intent until further notice. Although planning for the first cruises scheduled in CY 08 have began especially since some of them require foreign clearances.

2002 - 2008 UNOLS Fleet Operating Days and Costs

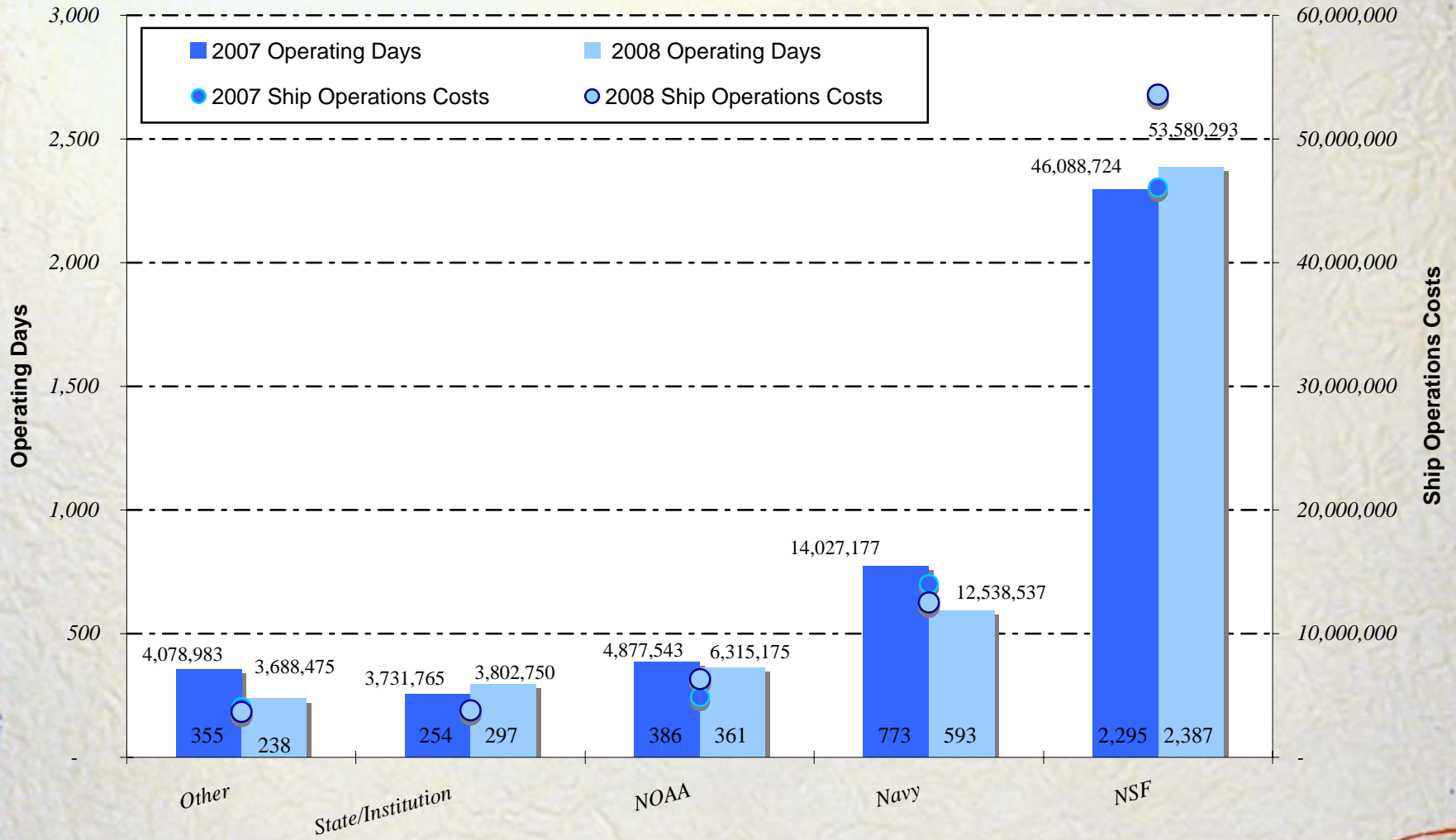


2007 UNOLS Fleet Operating Days and Costs Changes Over Time *(ship operations costs only)*

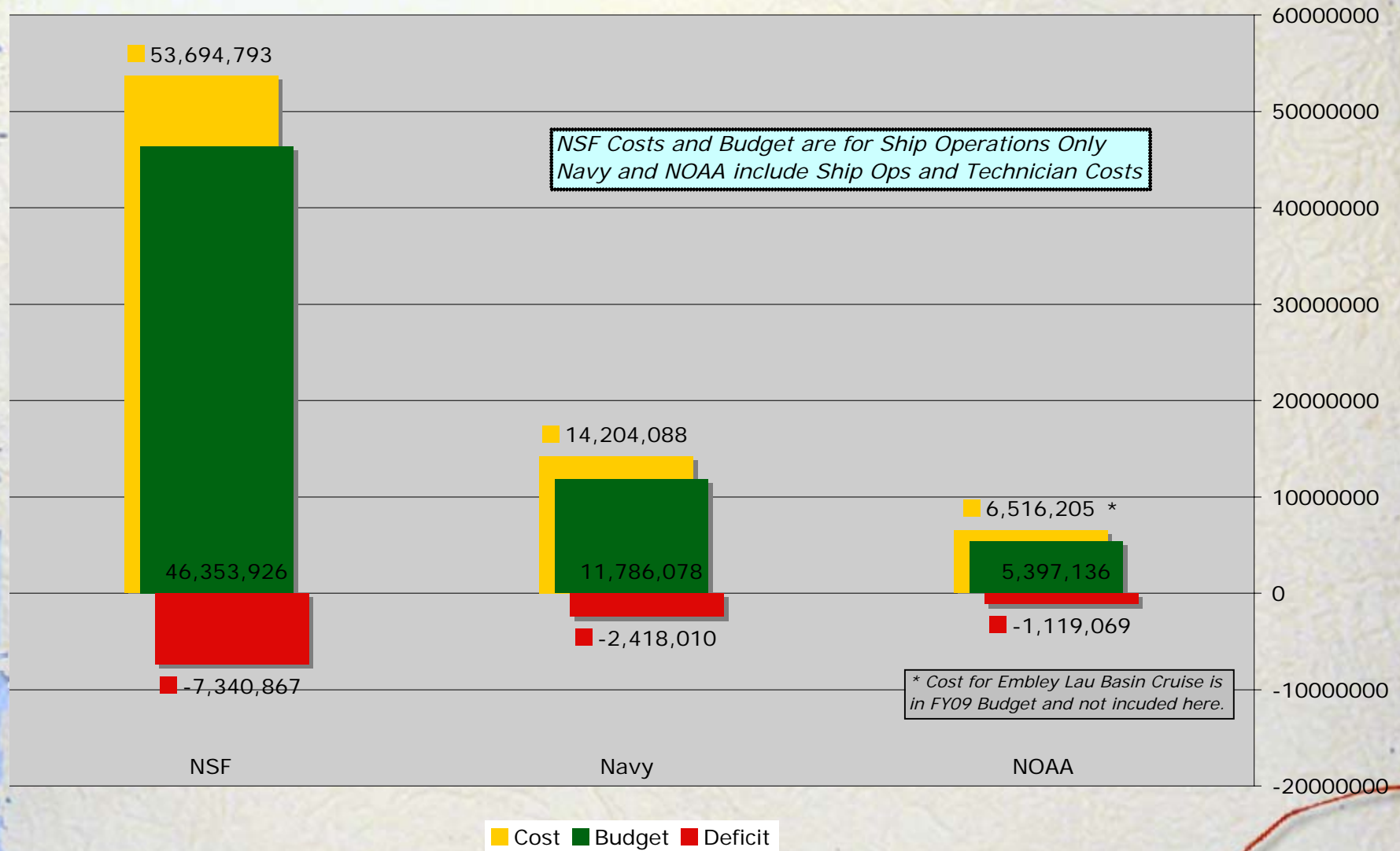


2008 Operating Days and Estimated Cost by Agency

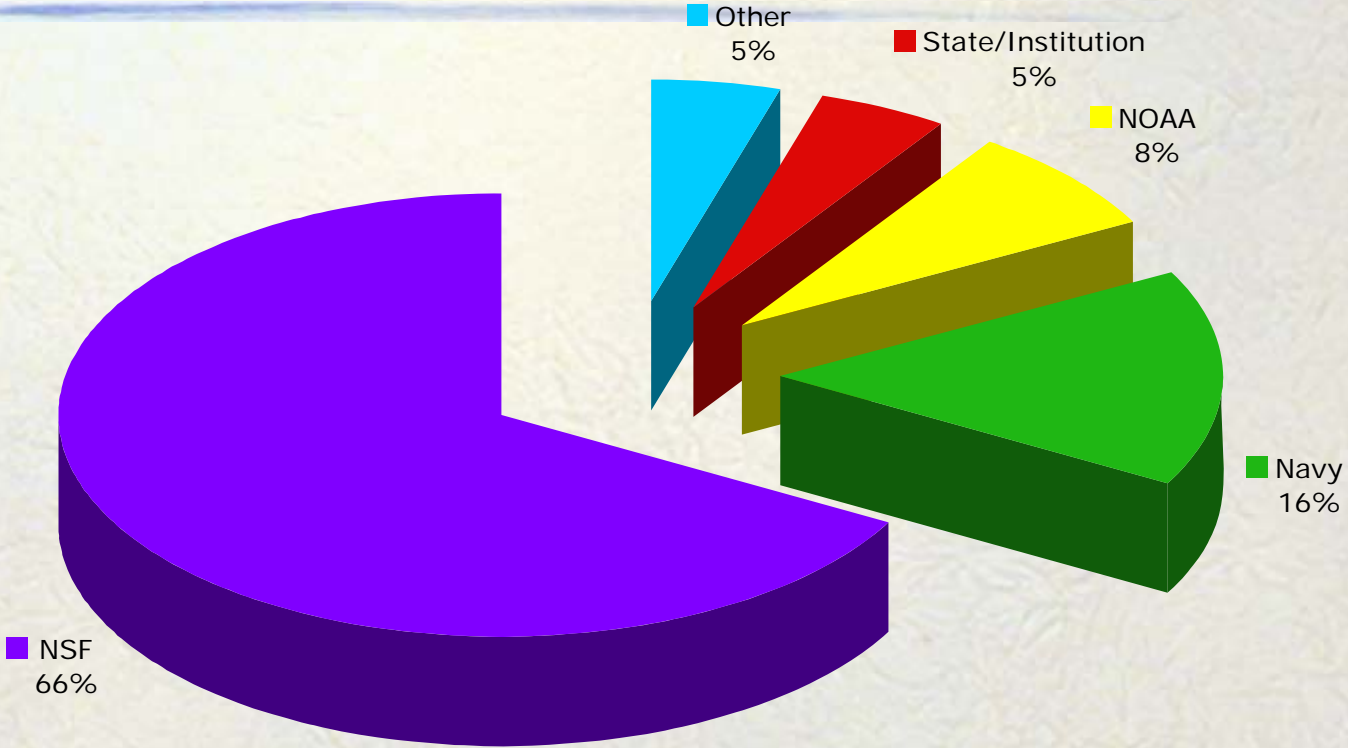
(Ship Operation Costs Only)



2008 Projections of Costs & Budgets for NSF, Navy and NOAA

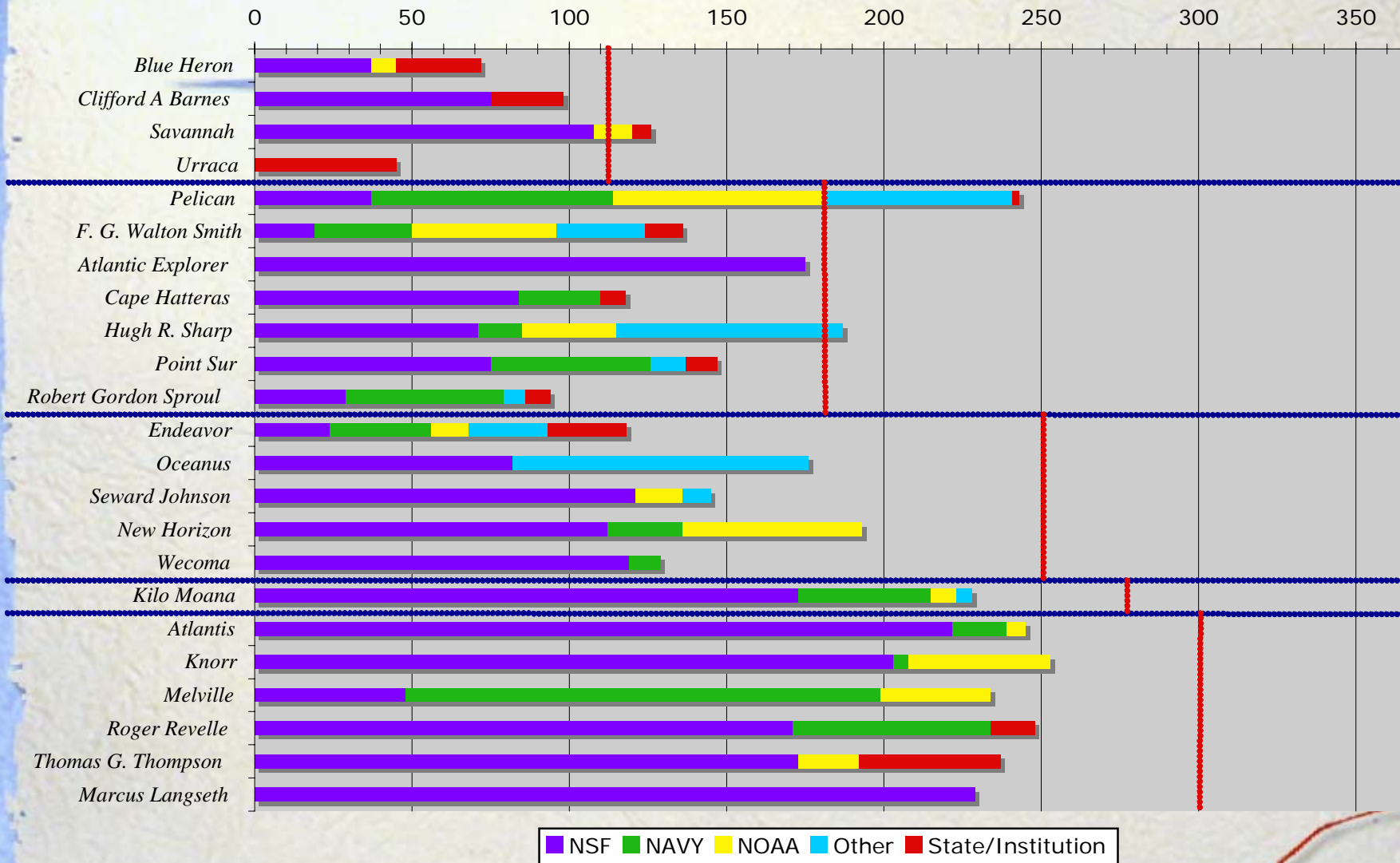


2008 Percent of Operating Costs by Agency



2008

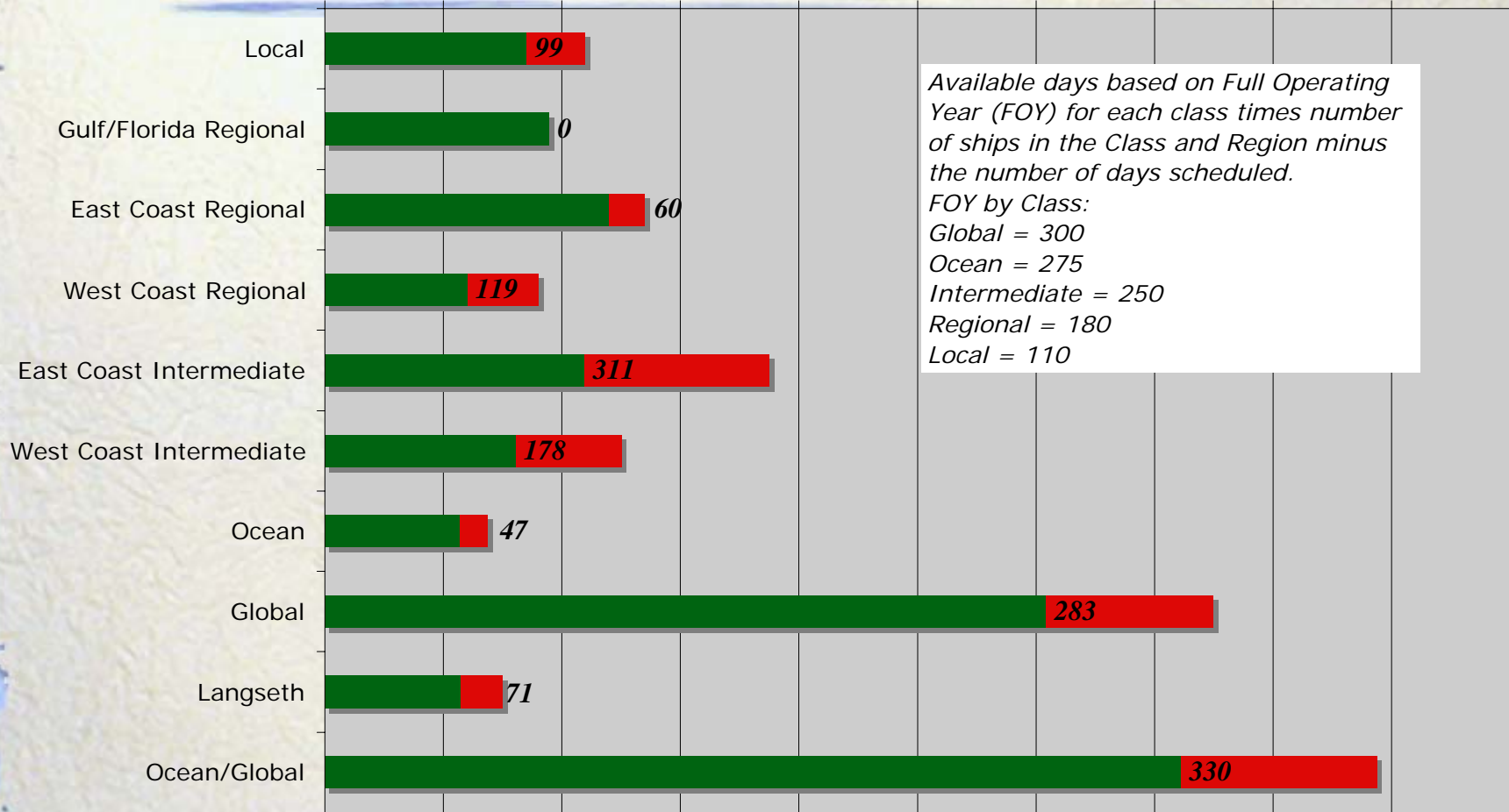
2008 UNOLS Operating Days by Agency



Utilization (Op Days) by Class and Region

Number of Operational Days

0 200 400 600 800 1,000 1,200 1,400 1,600 1,800 2,000



Available days based on Full Operating Year (FOY) for each class times number of ships in the Class and Region minus the number of days scheduled.

FOY by Class:

Global = 300

Ocean = 275

Intermediate = 250

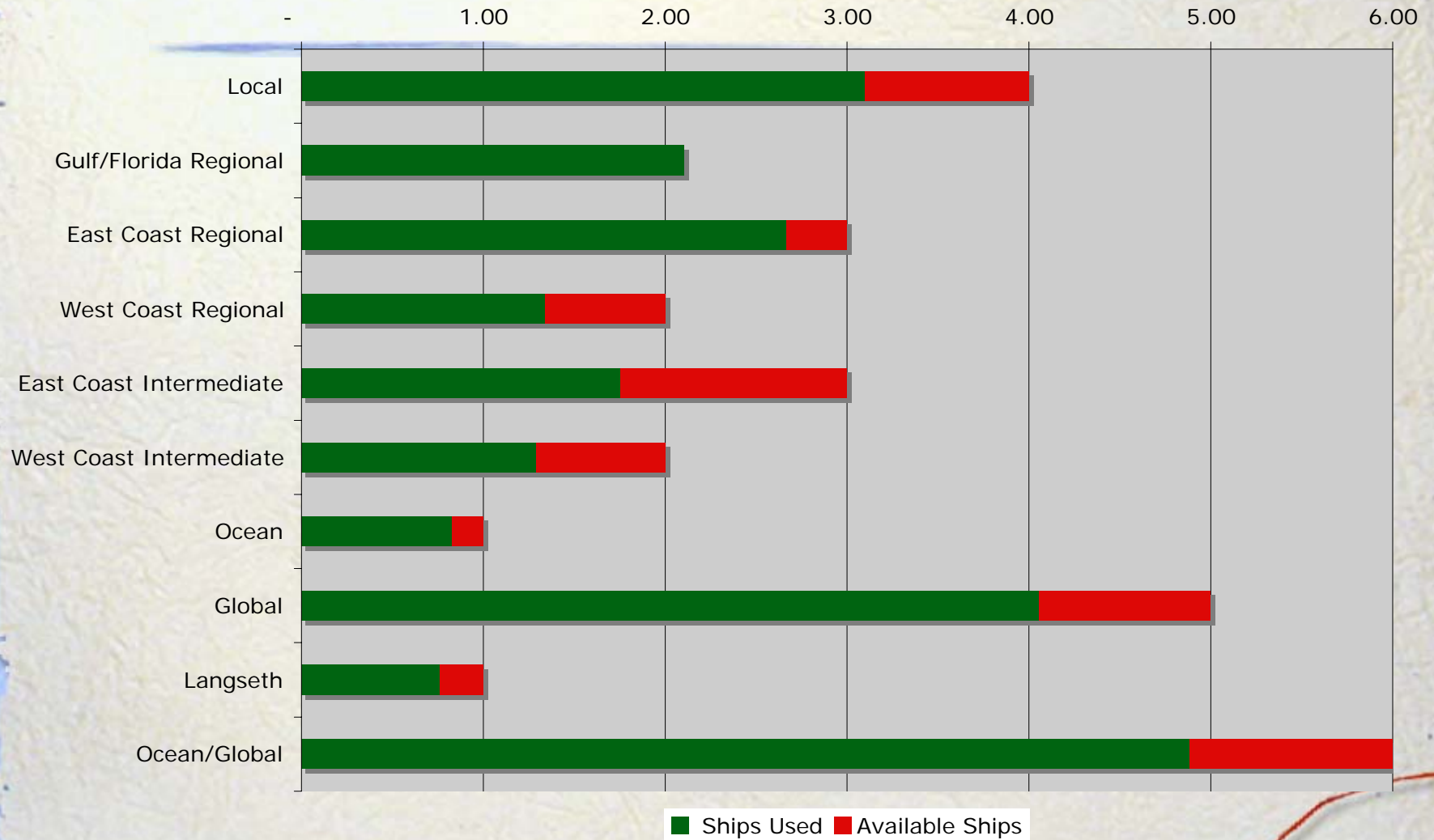
Regional = 180

Local = 110

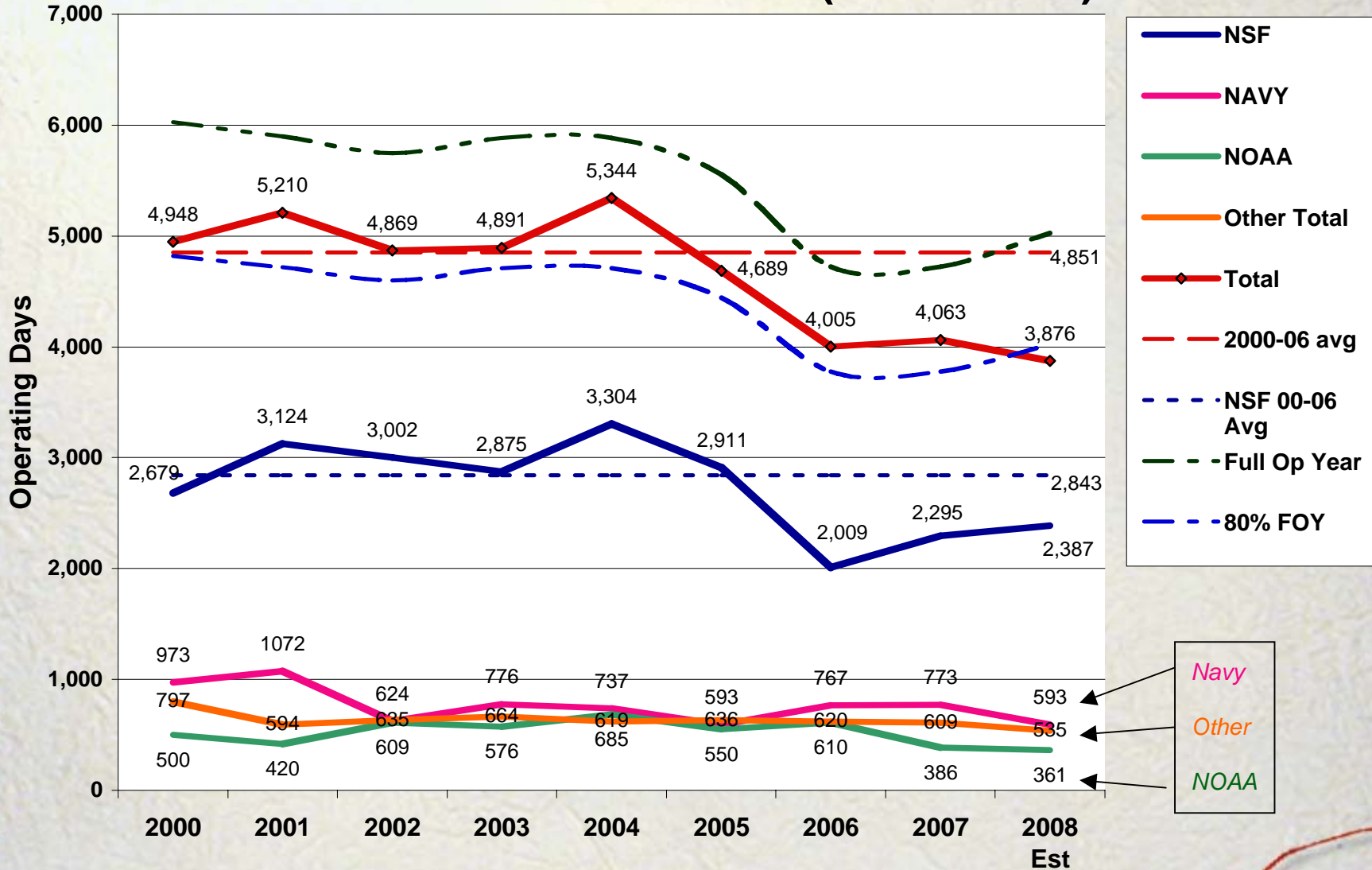
■ Days Scheduled ■ Available Days

Ship Utilization by Class/Region

of ship years scheduled and still available



UNOLS Fleet Utilization (2000 - 2008)



2008 Numbers based on:

- Knorr Set 2 w/o MAR
- Revelle Set 6 w/MAR
- Thompson Option 3 Lau Basin
- Melville Set 1
- Cape Hatteras Set 1a
- All others Set one or only posted one LOI