



NOAA and the National Deep Submergence Facility

DEep Submergence Science Committee Meeting NOAA 2007 Report Operations

Catalina Martinez
NOAA
Office of Ocean Exploration

May 31, 2007
Woods Hole, MA

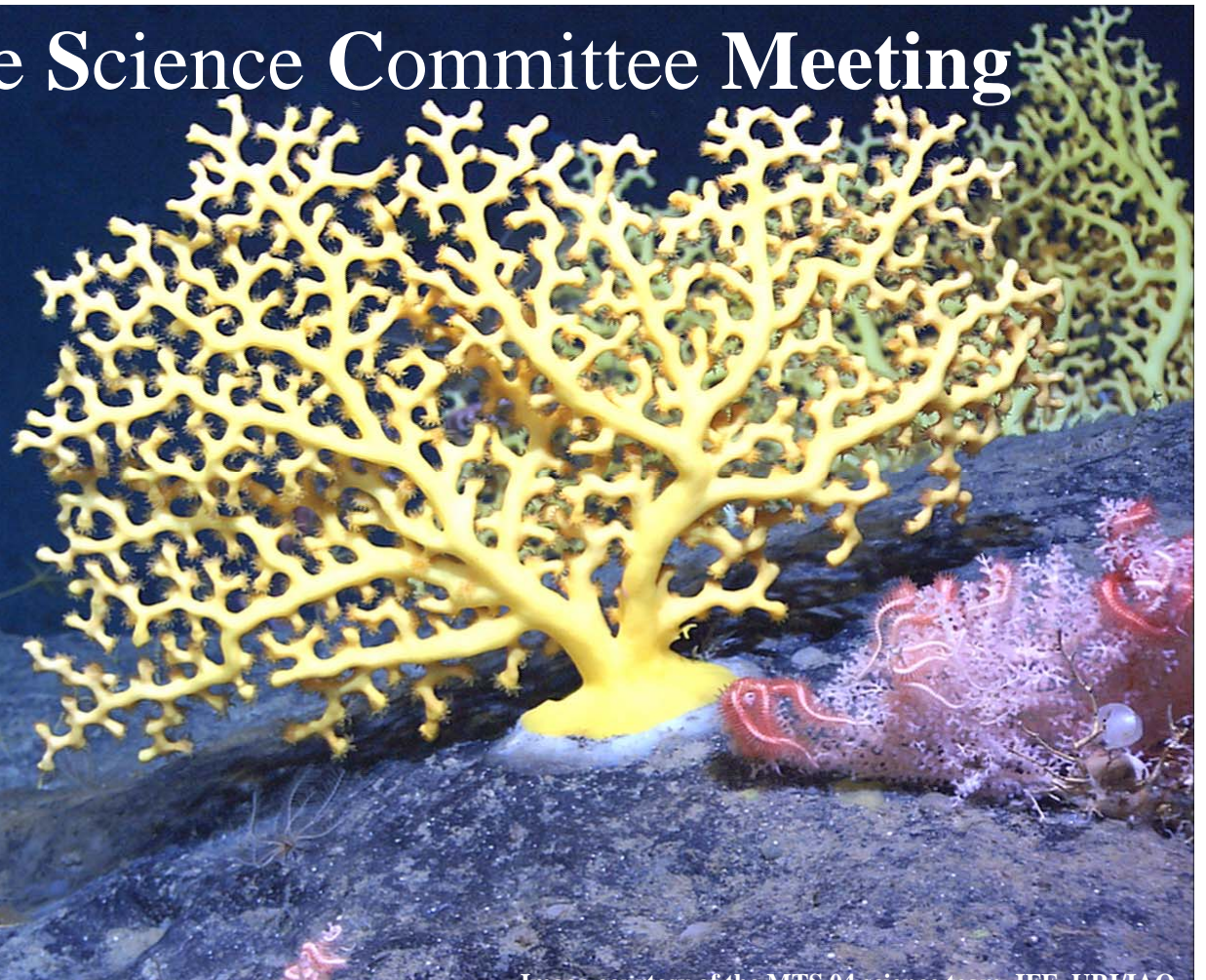


Image courtesy of the MFS/Mission team, JRE, LDU/LAO

NOAA NDSF Efforts FY2007

Expedition to the Deep Slope

PI: Chuck Fisher

Assets: Jason (Ron Brown)

Area: Gulf of Mexico

Submarine Ring of Fire

PI: Bob Embley

Assets: ABE & German ROV (Sonne)

Area: New Zealand

NeMO

PI: Bill Chadwick

Assets: Jason II (Atlantis)

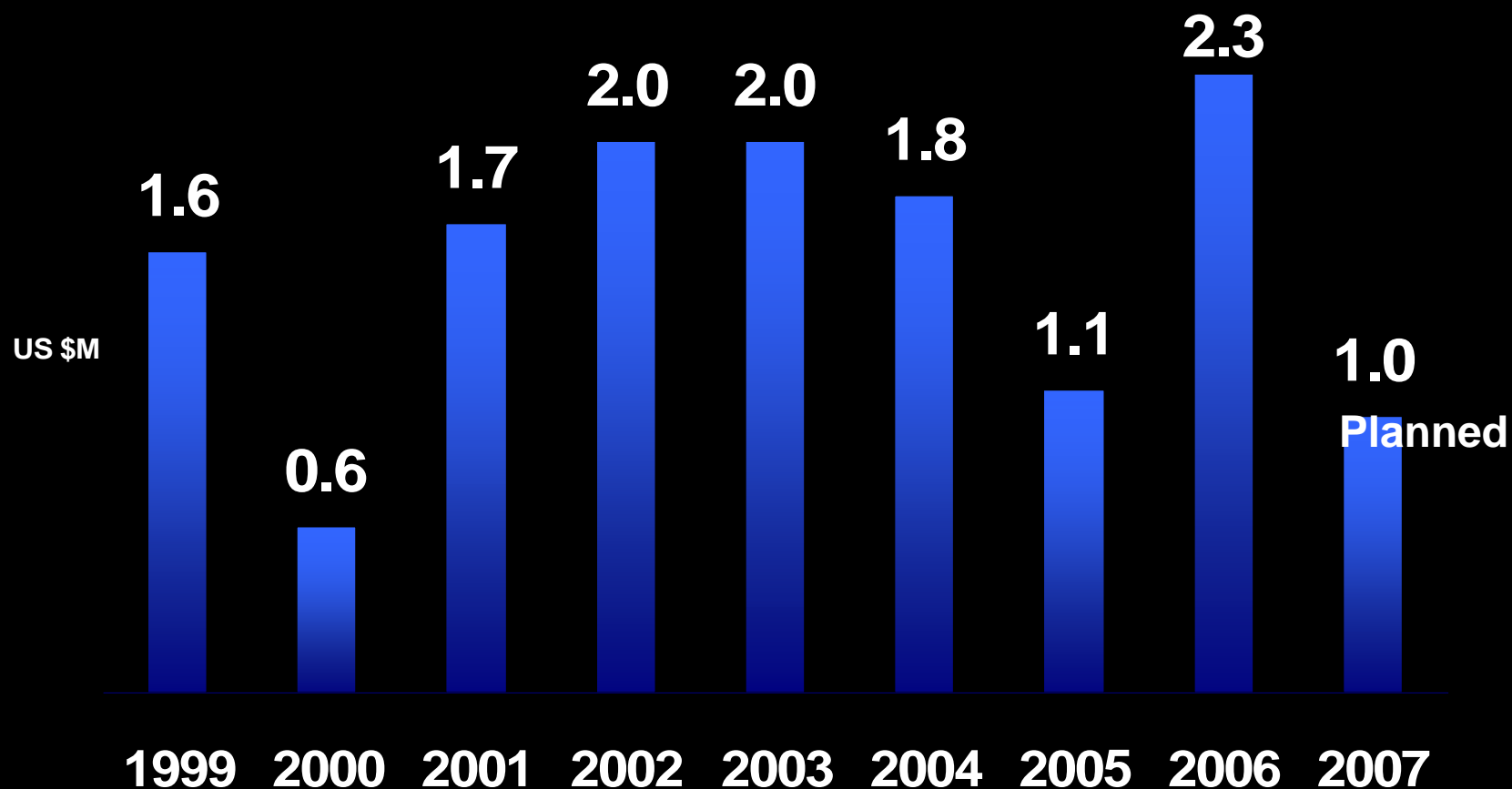
Area: Juan de Fuca



EXPLORE
NOAA OFFICE OF OCEAN EXPLORATION



Past NOAA NDSF Funding Levels



EXPLORE
NOAA OFFICE OF OCEAN EXPLORATION



NOAA Ship Okeanos Explorer



Artist Rendering.

NOAA Ship Okeanos Explorer

T-AGOS Vessel Acquired from Navy in 2004

Undergoing Conversion at Todd Pacific Shipyard in Seattle

Phased Conversion Process:

Phase I: Major vessel infrastructure modifications and select mission systems (Oct 06-Jul 07)

Phase II: Most science/mission systems (Sep 07 – Apr 08)

Phase III: Additional science/mission systems, auxiliary vessel systems (TBD)

Planned operations Spring 2008

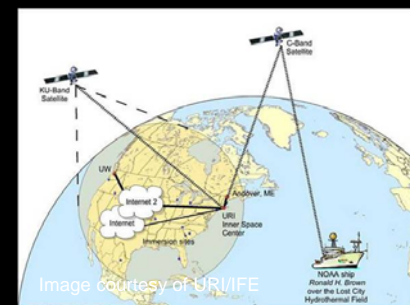
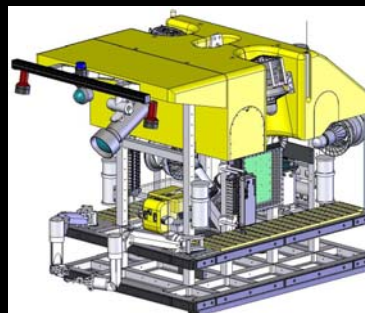
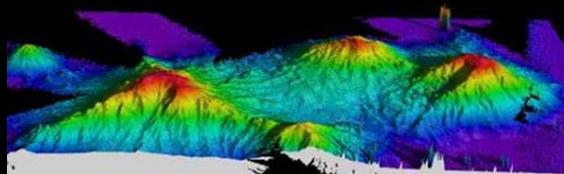


EXPLORE
NOAA OFFICE OF OCEAN EXPLORATION



NOAA Ship Okeanos Explorer

- High-resolution mapping
- Dedicated multi-purpose ROV (6000 m)
- Complementary science operations (i.e., CTD, etc.)
- Real-time, broadband satellite transmission of data



EXPLORE
NOAA OFFICE OF OCEAN EXPLORATION



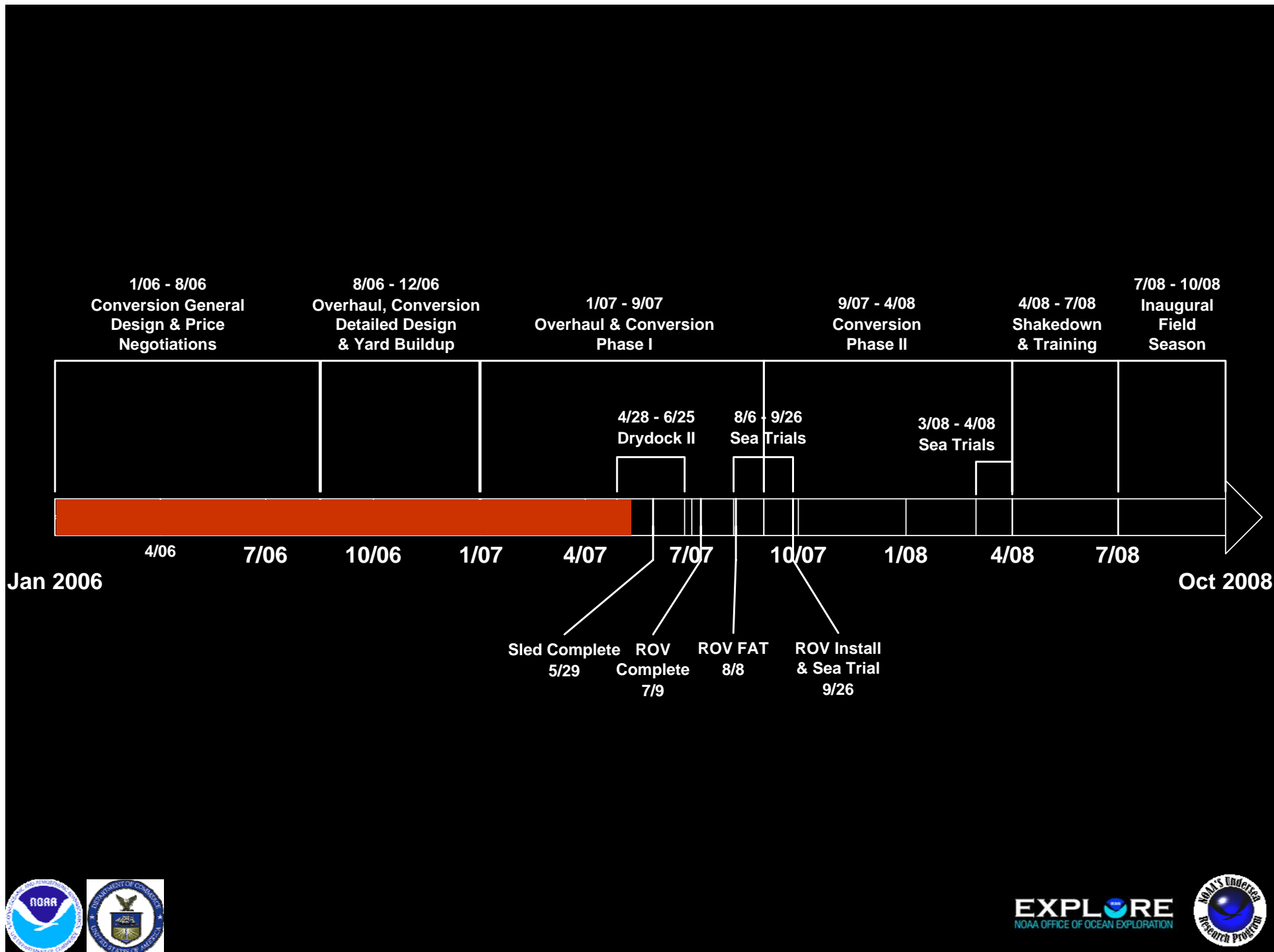
Refit Approach

- Conversion Design & Evaluation
- Ship Overhaul and Conversion
- Staffing & Training
- Shakedown Cruises
- Mission Operations



EXPLORE
NOAA OFFICE OF OCEAN EXPLORATION





EXPLORE
NOAA OFFICE OF OCEAN EXPLORATION



Preparation

- Development & integration
 - Software, hardware
 - Protocols, processes
 - Data management, archive, dissemination
 - Use of remote consoles
 - Application of technologies
- Staffing & Training
- Testing & evaluation
- Refine, refine, refine



EXPLORE
NOAA OFFICE OF OCEAN EXPLORATION

