

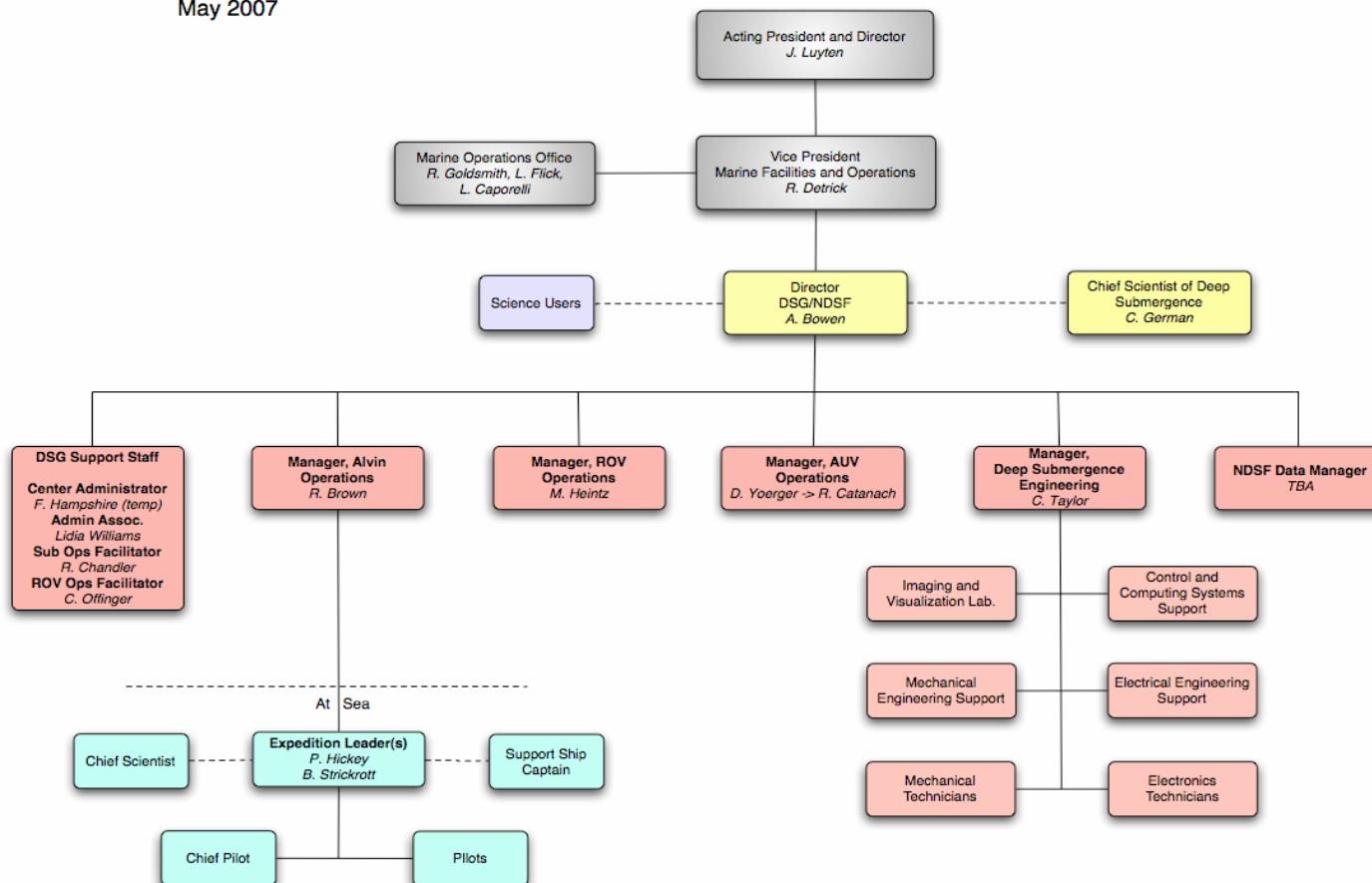
# National Facility Operator's Report

May 30/31, 2007 - *Carriage House* - Woods Hole Oceanographic Institution



# Emerging NDSF/DSG Structure

Deep Submergence Group (DSG)  
Woods Hole Oceanographic Institution  
May 2007



# Revision of NDSF Web Pages

National Deep Submergence Facility : Woods Hole Oceanographic Institution - Mozilla Firefox

File Edit View History Bookmarks Tools Help

http://www.whoi.edu/page.do?pid=8124

Computers Cycling Ordering Other Sailing Search Shipping/Travel Skiing Soccer Weather WHOI MyWHOI Hamilton News

## WOODS HOLE OCEANOGRAPHIC INSTITUTION

Search  
» Advanced Search

Home About WHOI Research People **Ships & Technology** Education News & Multimedia

Ships Underwater Vehicles **National Deep Submergence Facility** Instruments Observing Systems Cruise Planning

### National Deep Submergence Facility

About NDSF

NDSF Vehicles

Data

Cruise Planning

Highlights

### National Deep Submergence Facility

[Printer-friendly](#) [E-mail to a friend](#)  
font size: [T](#) [t](#) [T](#)

**About NDSF**  
Working for the benefit of the entire U.S. oceanographic community, WHOI operates a fleet of deep-sea exploration vehicles through the National Deep Submergence Facility (NDSF).

**NDSF Vehicles**  
That National Deep Submergence Facility operates a series of vehicles that include:  
[» HOV Alvin](#)  
[» ROV Jason/Medea](#)  
[» AUV ABE/Sentry](#)

**Data**  
Learn more about NDSF's vehicle data acquisition and capabilities, processing tools, data holdings and more.  
[» Alvin Frame Grabber](#)  
[» Jason Virtual Control Van](#)  
[» Archive Policy](#)  
[» Other Databases Serving NDSF Data](#)

**Cruise Planning**  
Find information you need if you are interested in using a NDSF vehicle or have one reserved and are preparing for

Done

Now: Mostly Sunny, 63° F Tue: 77° F Wed: 79° F

start DESSC Ag... Eudora - [In] National D... Adobe Pho... DESSC-W... DESSC AD... Document... 9:13 AM

