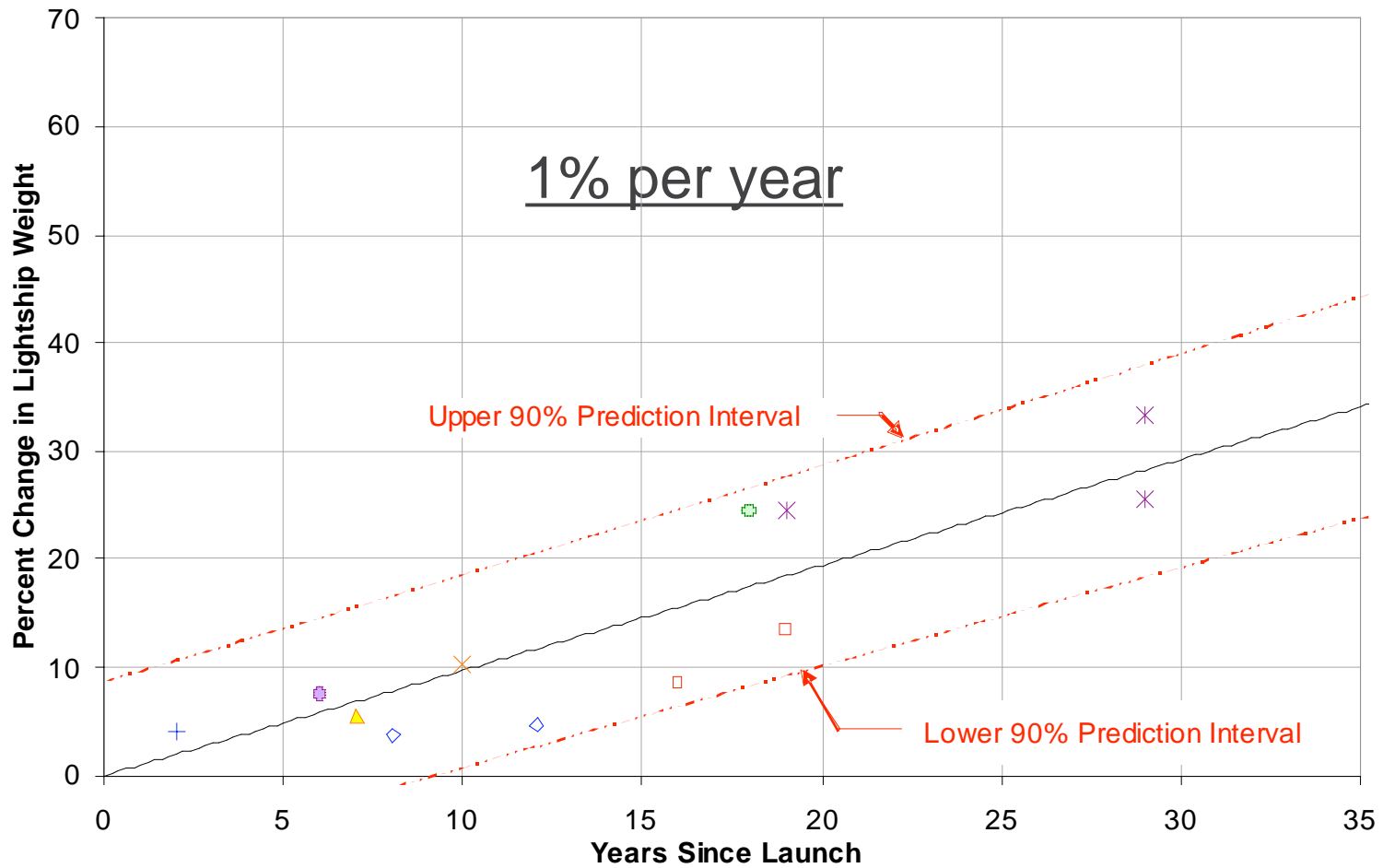


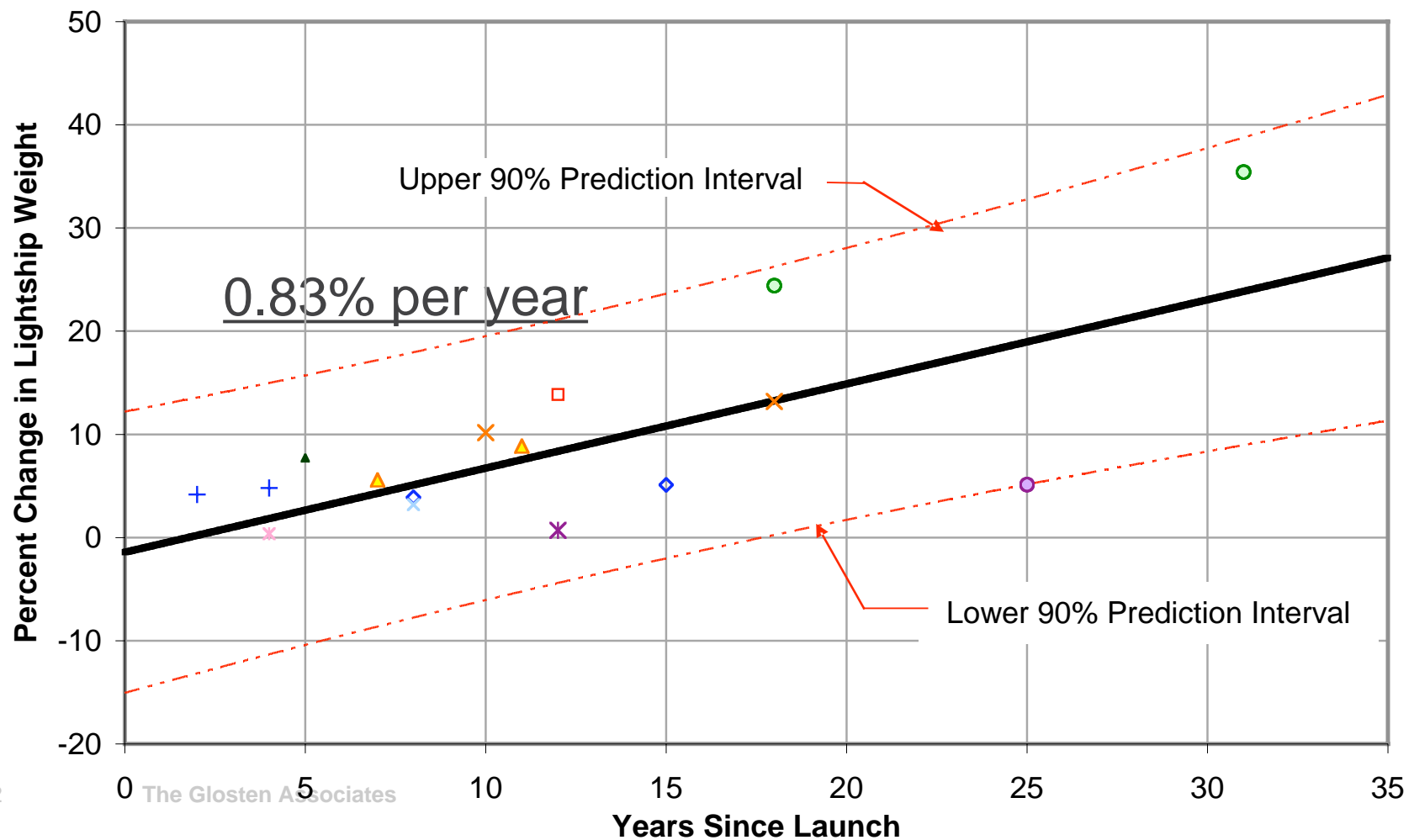
2004 Weight Predictions

Research Vessel Percentage Weight Growth Over Time



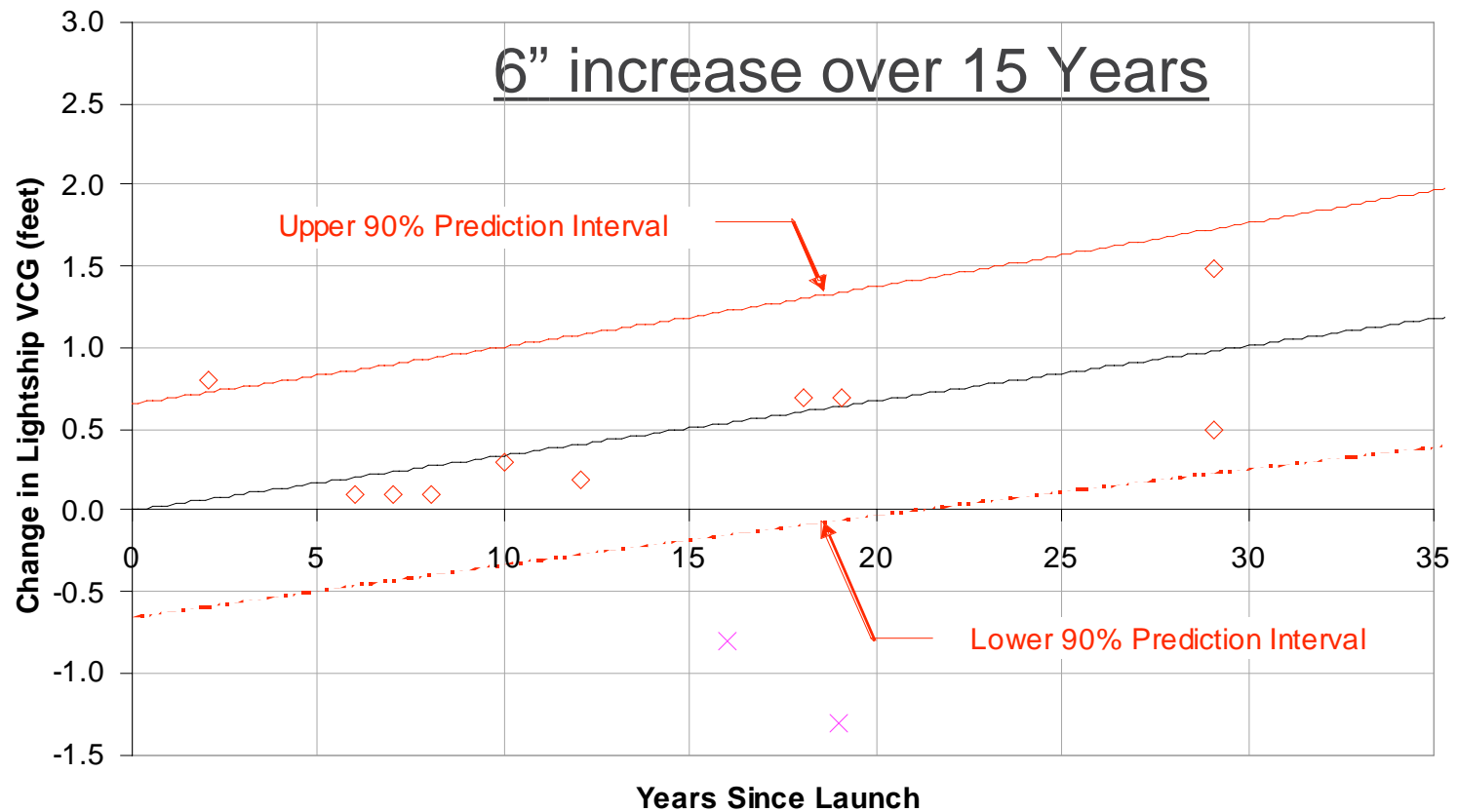
2006-07 Actual Data and Predictions

Research Vessel Percentage Weight Growth Over Time



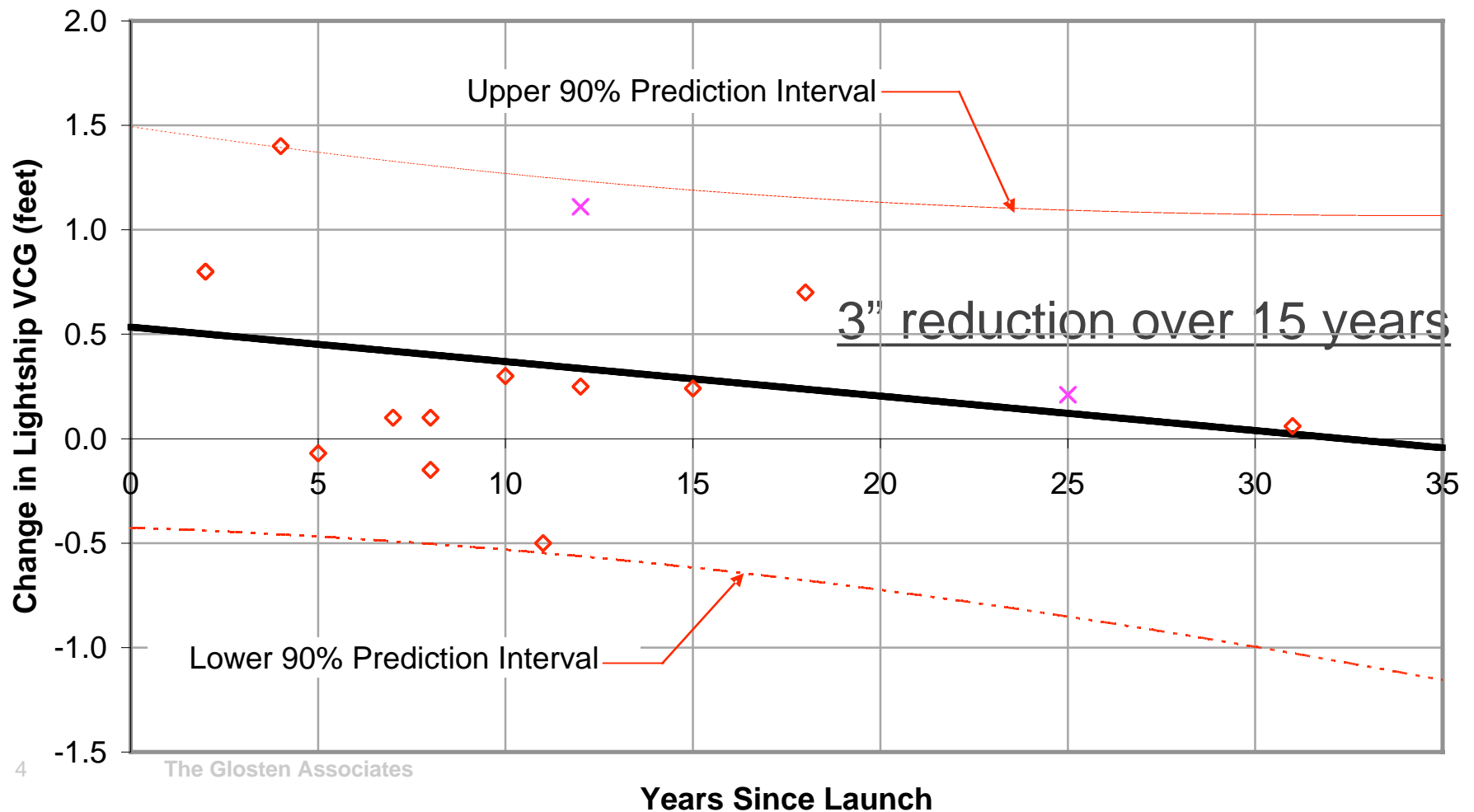
2004 VCG Predictions

Change in Research Vessel Vertical Center of Gravity Over Time



2006-07 Actual Data and Predictions

Change in Research Vessel Vertical Center of Gravity Over Time



Job 05096 stats

Following vessels tested:

- Point Sur
- Endeavor
- Atlantic Explorer (ex. Seward Johnson II)
- Savannah
- Wecoma
- Blue Heron
- Pelican
- Roger Revelle
- Kilo Moana

Updates to Revelle T&S only outstanding item

Job 06110 stats

Following vessels tested:

- Seward Johnson
- Walton Smith
- Thomas Thompson

Following vessels pending:

- R.G Sproul
- New Horizon
- Clifford Barnes
- Melville

GSSP installations under development

- Wecoma (completed)
- Point Sur
- Pelican
- Savannah
- R.G Sproul
- Walton Smith