

R/V Langseth Technical Staff

SCIENCE OFFICER : Responsible for experiment technical support planning and preparation for science projects. Serves as Department head for the Science Department with responsibility for supervision and management of all personnel. As well as serving as the primary liaison with the Client (PI) and Science party. Is Responsible of the data acquisition and operation to the best interest of the Client (P.I), LDEO and the onboard personnel through active supporting the Universities philosophy and objectives, as well as the HSE and Quality policies. This includes training of technical staff and coordinating support for shipboard instrumentation. Testing of hardware and providing input into equipment development and design evaluation.

ACQUISITION SPECIALIST: Supervises the overall operations of the Acquisition Department including the seismic streamers, seismic source control devices and all general purpose Oceanographic Equipment.

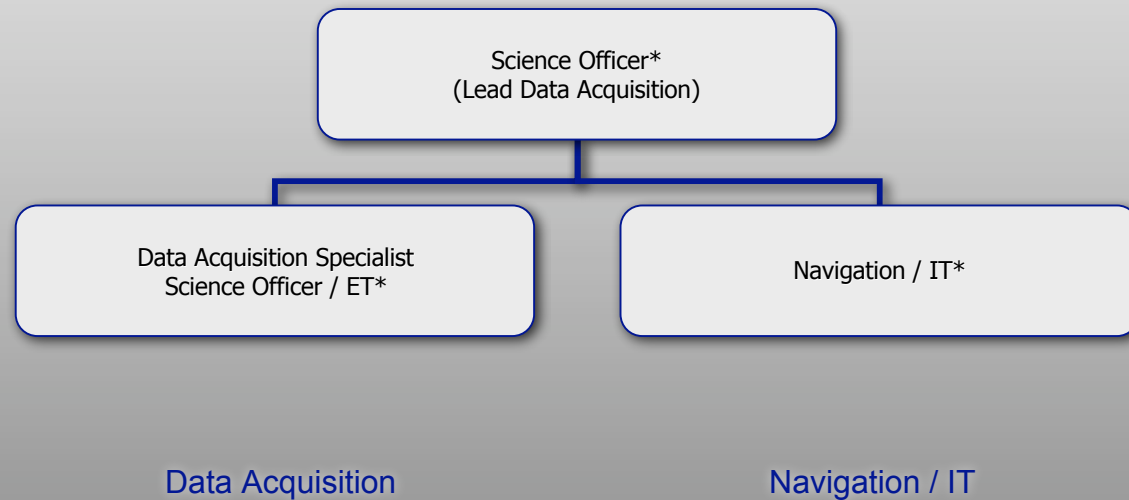
NAVIGATION SPECIALIST: Supervises the real time positioning of the ship and calculates final coordinates of the seismic source, the streamers and all general purpose Oceanographic Equipment .

SOUND SOURCE ENGINEER: Supervises the operations and maintenance of all mechanical equipments on board the vessel, the seismic source and also the rigging of the streamers (buoys, floats, diverters, traction cables...). As well as all general purpose Oceanographic Equipment. .

SEISMIC DATA PROCESSOR : Supervises the generation of acquisition quality control products and the processing of seismic data.

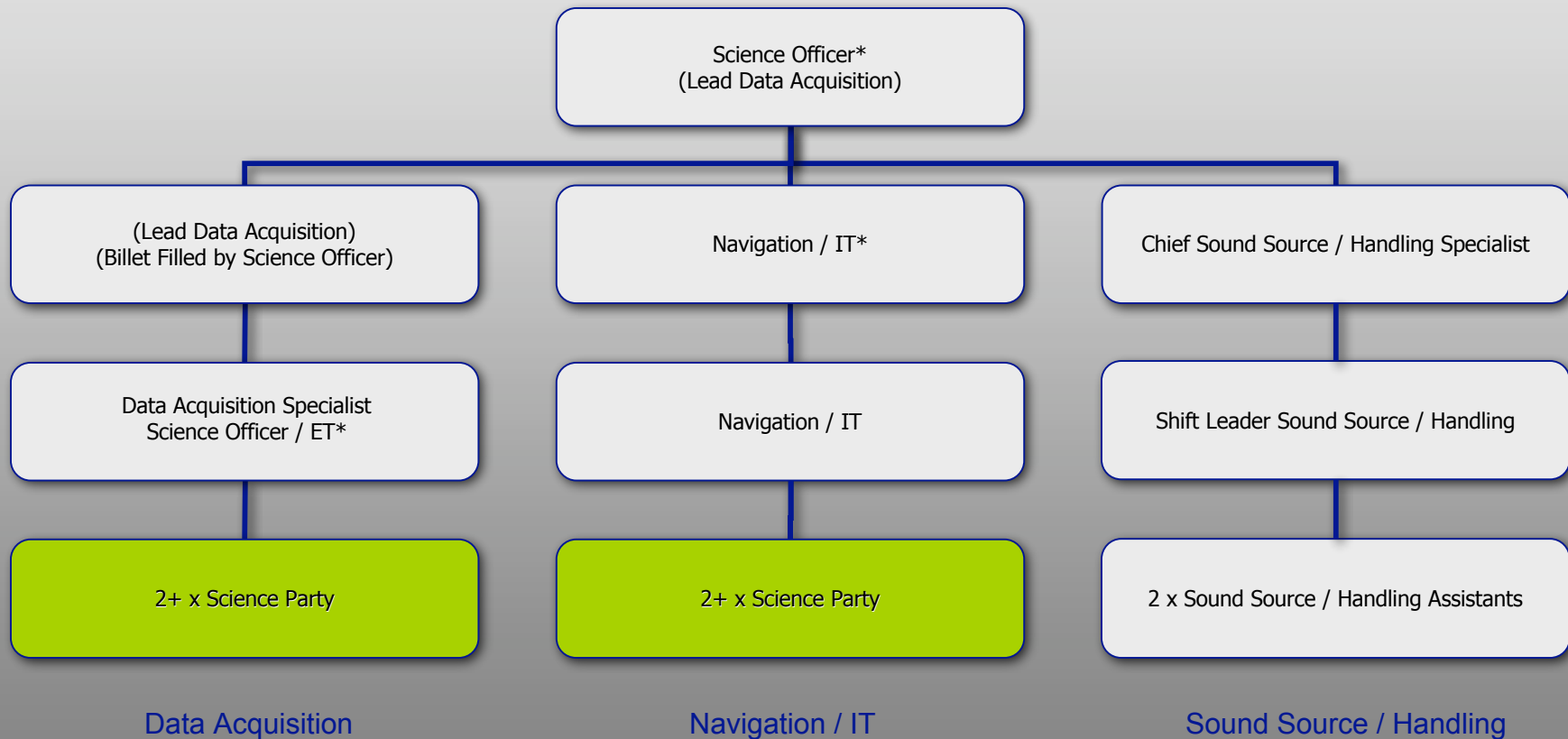
IT/ET SUPPORT: Supervises the Geophysical computer systems on a multi platform computer network both at-sea and at the Observatory. As well as designing and coauthor application programs for real time data acquisition systems and maintaining the data logging systems.

R/V Langseth Basic at Sea Technical Staff



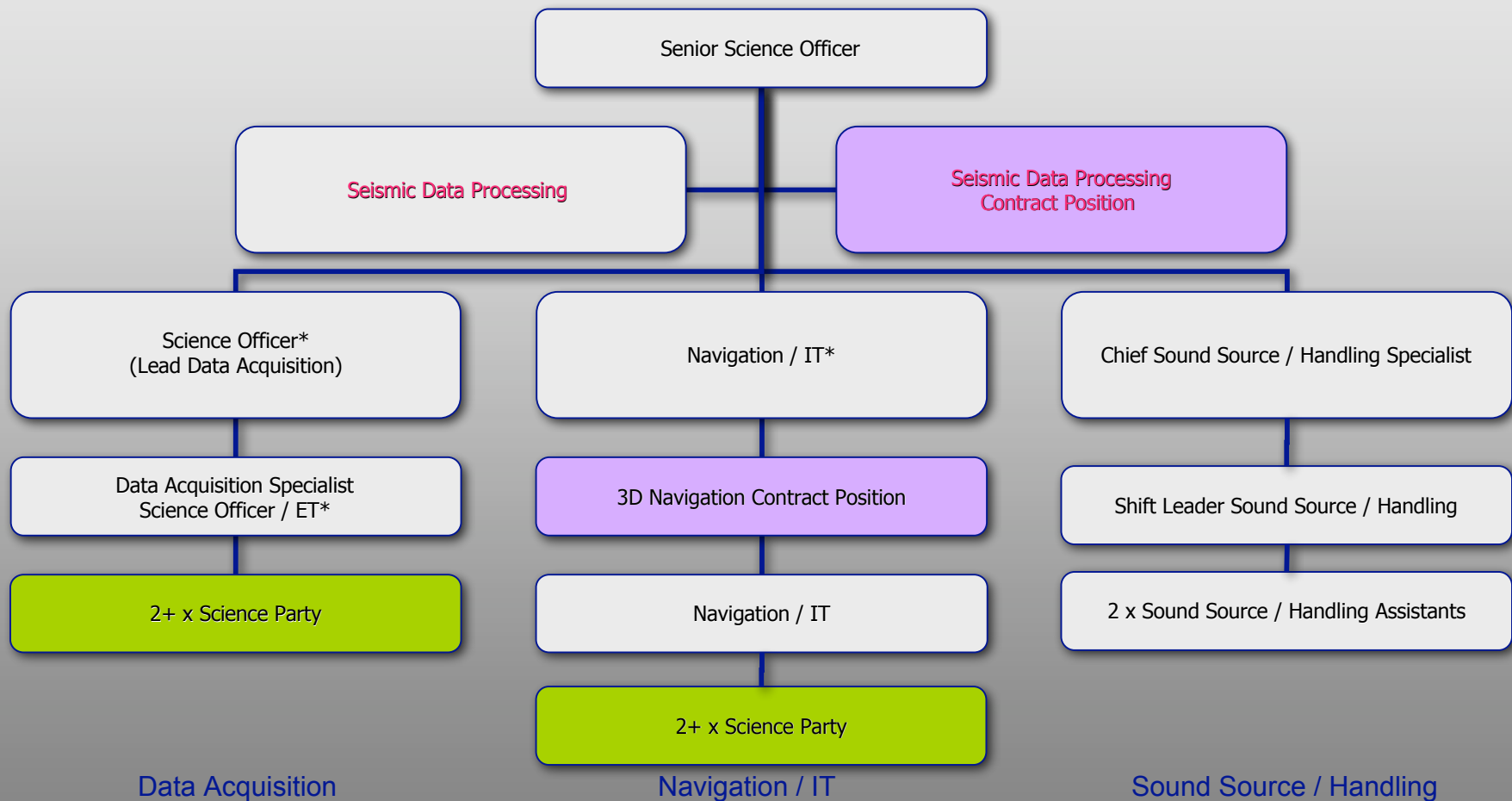
* Position Part of Basic Services
Proportional Support from Data/QC Position

R/V Langseth 2D MCS (3.1) at Sea Technical Staff



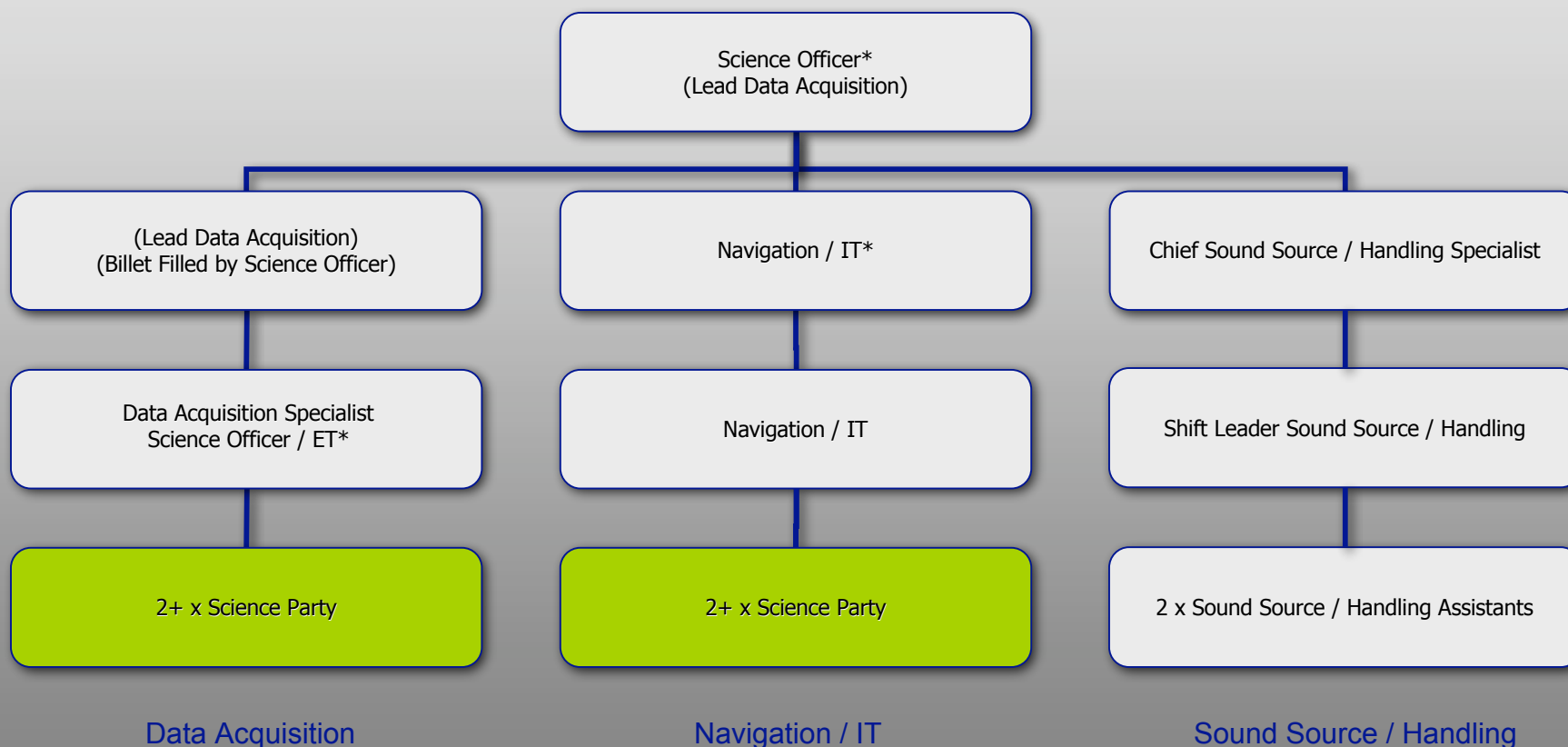
* Position Part of Basic Services
Proportional Support from Data/QC Position
Mammal Observation Under Separate Proposal

R/V Langseth 3D MCS (3.2) at Sea Technical Staff



* Position Part of Basic Services
Proportional Support from Data/QC Position
Mammal Observation Under Separate Proposal

R/V Langseth Sound Source Only (3.3) at Sea Technical Staff



* Position Part of Basic Services
Proportional Support from Data/QC Position
Mammal Observation Under Separate Proposal