



NAUTILUSLIVE.ORG
OCEAN EXPLORATION TRUST

DESSC | JUNE 2020

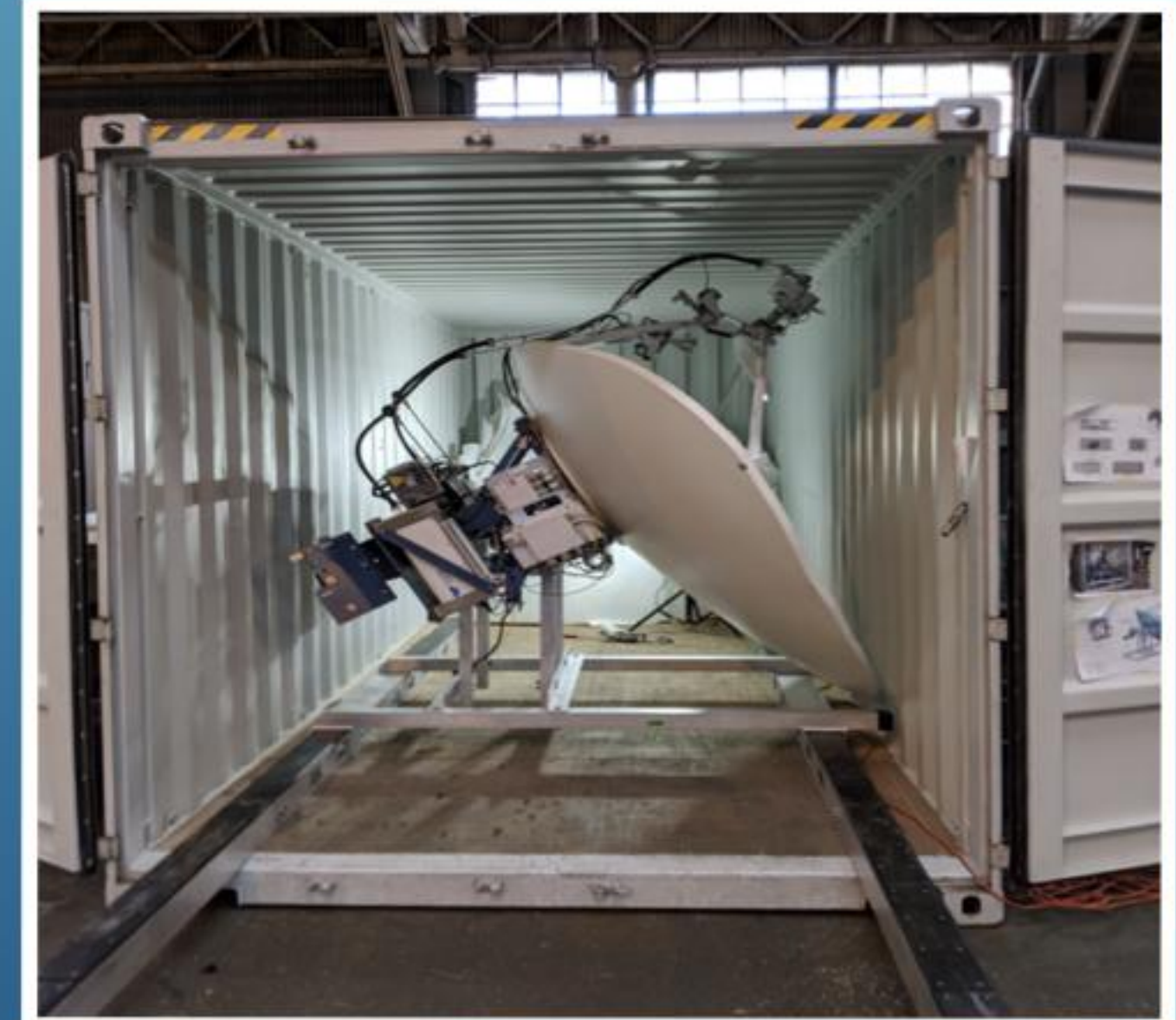


2020 UPGRADES

- Gran Península Yacht Center (Nov'19 - Jul'20)
- New main engine
- Redesigned funnel
- Expanded and upgraded gray water system
- Overhauled sewage treatment system



FLY-AWAY ROV SYSTEM



COVID-19 MITIGATION

- **DELAYED START TO FIELD SEASON** // postponed June start to July
- **REDUCED PERSONNEL ABOARD** // emphasizing telepresence for science & outreach
- **QUARANTINE & CREW CHANGES** // 14-day in-port quarantine & testing for all crew and science party personnel, minimizing personnel transfers as much as possible
- **COVID-19 SPECIFIC PROTOCOLS** // mitigation measures aboard for vessel access as well as day-to-day operations for all vessel spaces and individuals
- **RESPONSE PLANNING** // Protocols in place for response from suspected case through port arrivals and any subsequent ship quarantine & internal and external communications procedures

OCEAN NETWORKS CANADA

OLYMPIC COAST
NATIONAL MARINE SANCTUARY

CASCADIA MARGIN

GREATER FARALLONES
NATIONAL MARINE SANCTUARY

MONTEREY BAY
NATIONAL MARINE SANCTUARY

SANTA LUCIA BANK

CHANNEL ISLANDS
NATIONAL MARINE SANCTUARY

SOUTHERN CALIFORNIA

OSBORN BANK



NAUTILUSLIVE.ORG
OCEAN EXPLORATION TRUST



