
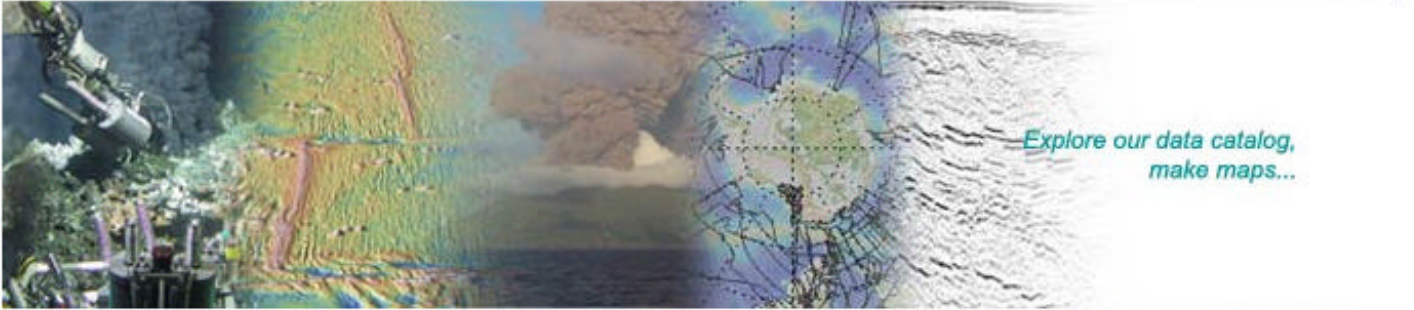


Data Management for Ridge2000 and Margins

www.marine-geo.org

 <p>MARINE GEOSCIENCE DATA SYSTEM</p>	Tools and Services	Data	Partners	Explore Further
	<p>Search for Data: GeoMapApp Data Link Create Maps & Grids Web Services Data for Google Earth Education Modules</p>	<p>Antarctic Bathymetry MARGINS Ridge 2000 Ridge Bathymetry Seismic Reflection</p>	<p>PetDB ODP Borehole LDEO Core Repository UTIG Processed Seis</p>	<p>What's New Related Links Contribute Data Meetings & Reports Acknowledgements Statistics & Holdings Advisory Committee</p>

*Explore our data catalog,
make maps...*

[Antarctic Bathymetry](#) [MARGINS](#) [Ridge 2000](#) [Ridge Bathymetry](#) [Seismic Reflection](#)

[About Us](#) [Contact Us](#) [Terms of Use](#) [Lamont-Doherty Earth Observatory](#) [National Science Foundation](#)

Goals

- Enable Ridge2000 and Margins communities to find data that have been collected (what, where, when, who)

Catalog

- Enable broader community access

Data Repository, Access Services

- Preserve data for future use

Metadata Standards, replicate storage

- Facilitate visualization and exploration of data (our tools and others)

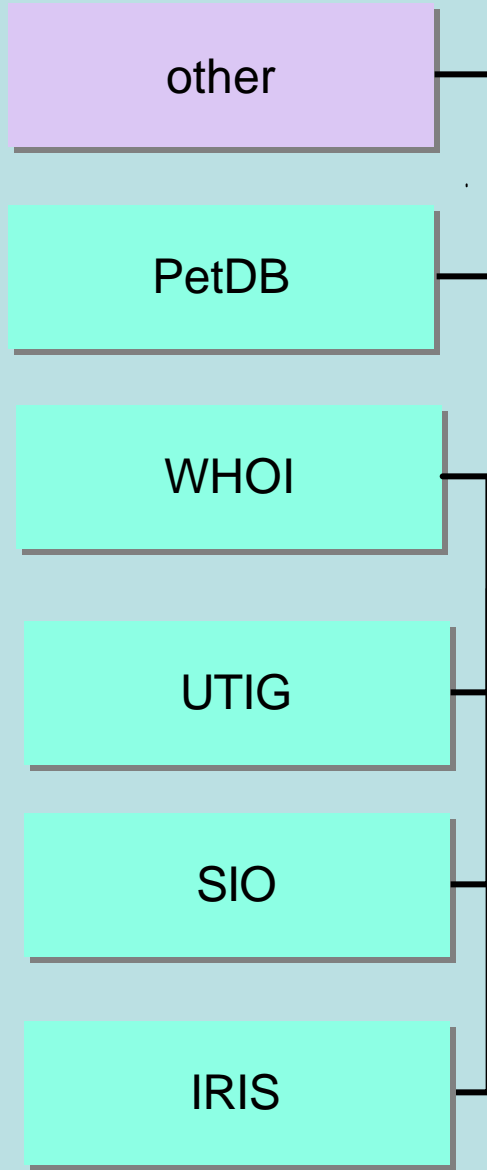
GMA, GoogleEarth, ArcGIS, Fledermaus

Requirements

- Handle large and DIVERSE datasets (seismic, sonar, geological, fluid, biological, rock, and sediment samples, temperature, photo imagery)
 - *very different from existing DB
- Serve a DIVERSE user community – non-specialist and specialist access

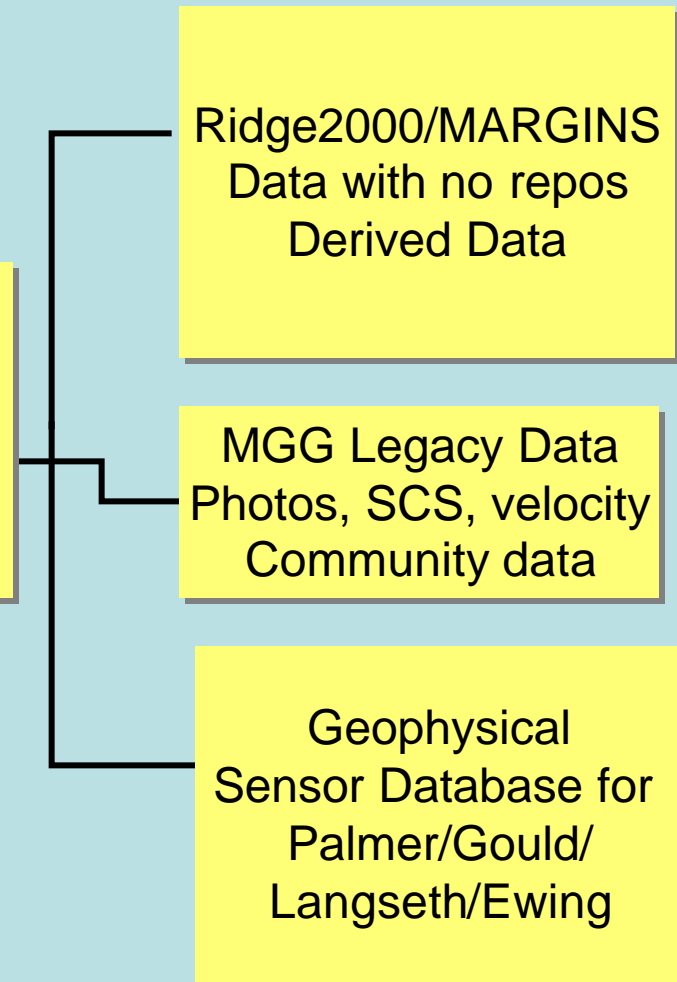
What	Cruise report	Nav: ship/ Alvin/J2/ ABE etc	station and sample logs	Instru ments	Field Data	Analytic Data	Processed Data
Where	MGDS Data Portal				MGDS+ WHOI + IRIS +others	- eg PetDB, VentDB	MGDS +others

Data Objects within External Repositories




GeoMapApp
Cruise Data Catalog

Data Objects within Local Repository



Data Portal

- Functionality
- Download forms
- Browse data holdings
- Download data
- Links to external sites

	Tools and Services	Data	Partners	Explore Further
	Search for Data: GeoMapApp Data Link Create Maps & Grids Web Services Data for Google Earth Education Modules	Antarctic Bathymetry MARGINS Ridge 2000 Ridge Bathymetry Seismic Reflection	PetDB ODP Borehole LDEO Core Repository UTIG Processed Seis	What's New Related Links Contribute Data Meetings & Reports Acknowledgements Statistics & Holdings Advisory Committee

Ridge 2000 Data Portal

This page provides access to cruise information and data collected during [Ridge 2000](#) funded projects. Learn more about this web site by browsing the [What's New page](#), and reading other [Project Related Documents](#).

You can [download forms](#) to document your field program.

Use [GeoMapApp](#) to explore the global topography database, create and download custom maps and grids as well as multibeam ping files. With GeoMapApp you can also view and explore trackline gravity and magnetics data, geochemical data from PetDB, seismicity, and seismic reflection profiles.

Use [Data Link](#) to search for a cruise or data type of interest by keyword or geographic region.

Use [Create Maps and Grids](#) to generate a quick bathymetry map or grid for a region of interest.

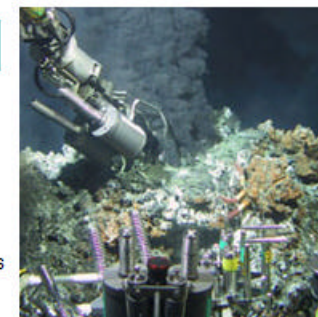


Photo by Karen Von Damm

Study Sites	Endeavor Segment (Juan de Fuca Ridge)	Eastern Lau Spreading Center (Lau Basin)	8°-11°N Segment (East Pacific Rise)
	Science Plan	Science Plan	Science Plan
	LIST DATA SETS - - by Expedition (R2K-funded) - by Expedition (all) - by Data Type (R2K-funded) - by Data Type (all)	LIST DATA SETS - - by Expedition (R2K-funded) - by Expedition (all) - by Data Type (R2K-funded) - by Data Type (all)	LIST DATA SETS - - by Expedition (R2K-funded) - by Expedition (all) - by Data Type (R2K-funded) - by Data Type (all)
	Create Map/Grid	Create Map/Grid	Create Map/Grid
	Deployed Instruments	Deployed Instruments	Deployed Instruments
	Vent List	Vent List	Vent List
	Related Links	Related Links	Related Links

Metadata Forms



Tools and Services	Data	Partners	Explore Further
Search for Data: GeoMapApp Data Link Create Maps & Grids Web Services Data for Google Earth Education Modules	Antarctic Bathymetry MARGINS Ridge 2000 Ridge Bathymetry Seismic Reflection	PetDB ODP Borehole LDEO Core Repository UTIG Processed Seis	What's New Related Links Contribute Data Meetings & Reports Acknowledgements Statistics & Holdings Advisory Committee

Ridge 2000 Data Portal

This page provides access to cruise information and data collected during [Ridge 2000](#) funded projects. Learn more about this web site by browsing the [What's New page](#), and reading other [Project Related Documents](#).

You can [download forms](#) to document your field program.

Use [GeoMapApp](#) to explore the global topography database, create and download custom maps and grids as well as multibeam ping files. With GeoMapApp you can also view and explore trackline gravity and magnetics data, geochemical data from PetDB, seismicity, and seismic reflection profiles.

Use [Data Link](#) to search for a cruise or data type of interest by keyword or geographic region.

Use [Create Maps and Grids](#) to generate a quick bathymetry map or grid for a region of interest.

Study Sites	Endeavor Segment (Juan de Fuca Ridge)	Eastern Lau Spreading Center (Lau Basin)	8°-11°N Segment (East Pacific R)
	Science Plan	Science Plan	Science Plan
	LIST DATA SETS - - by Expedition (R2K-fund) - by Expedition (all) - by Data Type (R2K-fund) - by Data Type (all)	LIST DATA SETS -	LIST DATA SETS -
	Create Map/Grid		
	Deployed Instruments		
	Vent List		
	Related Links		

Metadata Entry Forms

The two packets of standardised electronic forms that can be downloaded from this page have been developed to facilitate the basic metadata and data reporting requirements of the NSF Ridge 2000 and MARGINS programs as defined in their published Data Policies.

Investigators funded by Ridge 2000 and MARGINS are asked to submit the completed metadata forms to us within sixty (60) days following the end of their land or marine field program. Additionally, we encourage all marine investigators - from any marine geoscience experiment - to also submit the completed marine forms to us.

Marine field programs	Land-based field programs
The latest version of the marine metadata forms can be downloaded here as a single zipped package. Read the description of the marine metadata forms packet.	The latest version of the land-based metadata forms can be downloaded here as a single zipped package. Read the description of the land metadata forms packet.

Zip files can be decoded using the free Aladdin Stuffit software for [Windows](#), [Macintosh](#), or [Unix](#) (Solaris/Linux).

Instructions and examples are included in the forms packages. The forms and documents included in this packet are listed below.

Marine Metadata Forms: Description of packet

- [README.doc](#) [README](#) file with notes and instructions, in WORD format
- [README.pdf](#) [README](#) file with notes and instructions, in PDF format
- [Data_Policies](#) folder containing Ridge 2000 and MARGINS policies
- [Overview_forms](#) folder, described below
- [log_sheets](#) folder, described below

	A	B	C	D	E	F	G
1	B13: Vehicle Dive log: DSV - HOV - AUV - ROV (for Alvin, JasonII, ABE, SeaBED, etc)						
2	Cruise ID: <input type="text"/>						
3	Log sheet Completed By: <input type="text"/>						
4	Log sheet Completion date: <input type="text"/>						
5							
6							
7							
8							
9		Vehicle type	Start of dive Date	Start of dive Time (UTC)	End of dive Date	End of dive Time (UTC)	Data types collected
10	Dive #						
11							
12	<i>Examples</i>	<i>Examples</i>	<i>Examples</i>	<i>Examples</i>	<i>Examples</i>	<i>Examples</i>	<i>Examples</i>
13	4139	Alvin	2003-06-18	14:38	2003-06-19	00:21	images, fluids, rocks
14	J2-157	JasonII	2005-02-24	19:03	2005-02-25	04:47	bio/fluid samples, video
15	0023	ABE	2004-06-12	15:54	2004-06-12	23:20	bathymetry, magnetics
16	S-005	SeaBED	2003-06-22	10:46	2003-06-22	19:56	CTD, bathymetry, photos
17							
18							

Digital Event-logging and Metadata Extraction

1 A B C D E F G

2 B13: Vehicle Dive log: DSV - HOV - AUV - ROV (for Alvin, JasonII, ABE, SeaBED, etc)

3

4 Cruise ID:

5 Log sheet Completed By:

6 Log sheet Completion date:

7

8

9

10 Dive #

11

12 Examples

13 4139 A

14 J2-157 J

15 0023 A

16 S-005 S

17

18

http://4dgeo.wholedu - Jason Virtual Control Van - Mozilla Firefox

99/03/10 04:53:44 Nav Quality OK Poor Unknown

Gas Tight

TGT

Temp

Gas Tight 1

Fauna 2

Flow Measurement 3

Flange 4

chimneys 5

Buoyant Plume 6

Frame Grab 7

8

Frame Grab

X: -99999.99

Y: -99999.99

Depth: 0.000

Altitude: 0.0

Gyro: 0

Enter

Use?

Path 19990310_0450.EVT

Clear Selected Text

Configure

Suspend

Quit

Show All Find show all results only

1000 of 34504

Goto 1000 RefreshRate: 5

TCP Port: 10502 CfgFile: Jason.cfg Source:

Setup...

Category				Observation
GEO.sulfide	GEO.basalt	GEO.sediment	GEO.desc	lobate pillows pillows truncated sheet flow hackly pahoehoe tabular or blocky talus or rubble
HYD.animals	HYD.geodesc	HYD.height	HYD.shape	
HYD.smokertype	INS.desc	INS.H2O	SRV.event	

LockTarget Target: Event: LogEvent

1000 2005/04/06 04:39:47 ASNAP

1001 2005/04/06 04:40:17 ASNAP

1002 2005/04/06 04:40:18 EVT FrameGrab

1003 2005/04/06 04:40:21 EVT FrameGrab

1004 2005/04/06 04:40:23 EVT FrameGrab

tumi05mv - SP4/Lau Basin 20-225 17

Done

*Collaboration with WHOI/NDSF

Browse data holdings

	Tools and Services	Data	Partners	Explore Further
	Search for Data: GeoMapApp Data Link Create Maps & Grids Web Services Data for Google Earth Education Modules	Antarctic Bathymetry MARGINS Ridge 2000 Ridge Bathymetry Seismic Reflection	PetDB ODP Borehole LDEO Core Repository UTIG Processed Seis	What's New Related Links Contribute Data Meetings & Reports Acknowledgements Statistics & Holdings Advisory Committee

Ridge 2000 Data Portal

This page provides access to cruise information and data collected during [Ridge 2000](#) funded projects. Learn more about this web site by browsing the [What's New page](#), and reading other [Project Related Documents](#).

You can [download forms](#) to document your field program.

Use [GeoMapApp](#) to explore the global topography database, create and download custom maps and grids as well as multibeam ping files. With GeoMapApp you can also view and explore trackline gravity and magnetics data, geochemical data from PetDB, seismicity, and seismic reflection profiles.

Use [Data Link](#) to search for a cruise or data type of interest by keyword or geographic region.

Use [Create Maps and Grids](#) to generate a quick bathymetry map or grid for a region of interest.

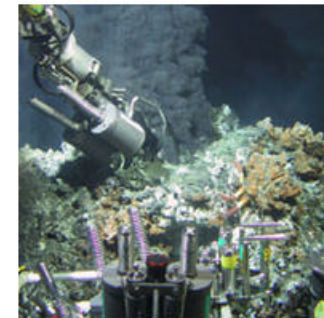


Photo by Karen Von Damm

Study Sites	Endeavor Segment (Juan de Fuca Ridge) Science Plan LIST DATA SETS - - by Expedition (R2K-funded) - by Expedition (all) - by Data Type (R2K-funded) - by Data Type (all) Create Map/Grid Deployed Instruments Vent List Related Links	Eastern Lau Spreading Center (Lau Basin) Science Plan LIST DATA SETS - - by Expedition (R2K-funded) - by Expedition (all) - by Data Type (R2K-funded) - by Data Type (all) Create Map/Grid Deployed Instruments Vent List Related Links	8°-11°N Segment (East Pacific Rise) Science Plan LIST DATA SETS - - by Expedition (R2K-funded) - by Expedition (all) - by Data Type (R2K-funded) - by Data Type (all) Create Map/Grid Deployed Instruments Vent List Related Links





MARINE
GEOSCIENCE
DATA
SYSTEM

Tools and Services	Data	Partners	Explore Further
Search for Data: GeoMapApp Data Link Create Maps & Grids Web Services Data for Google Earth Education Modules	Antarctic Bathymetry MARGINS Ridge 2000 Ridge Bathymetry Seismic Reflection	PetDB ODP Borehole LDEO Core Repository UTIG Processed Seis	What's New Related Links Contribute Data Meetings & Reports Acknowledgements Statistics & Holdings Advisory Committee

Data Link Result

(Click on Entry ID to view full record.)

Map View

ENTRY	PLATFORM	CHIEF SCIENTIST	START DATE	PORT	END DATE	PORT
EPR:9N Tolstoy						
AT11-07	Atlantis	Schouten, Hans	2004-01-26	San Diego, California	2004-02-24	Puntarenas, Costa Rica
DANA06RR	Roger Revelle	Constable, Steven	2004-02-09	Puerto Caldera, Costa Rica	2004-03-09	Mazatlan, Mexico
AT11-09	Atlantis	VonDamm, Karen	2004-03-16	Puntarenas, Costa Rica	2004-04-02	Manzanillo, Mexico
AT11-10	Atlantis	Lutz, Richard	2004-04-07	Manzanillo, Mexico	2004-05-05	San Diego, California
AT11-20	Atlantis	Lilley, Marvin	2004-11-05	San Diego, California	2004-11-26	Manzanillo, Mexico
AT11-26	Atlantis	Vetriani, Costantino	2005-04-23	Manzanillo, Mexico	2005-05-15	Puntarenas, Costa Rica
EPR:9N MGDS						
TN188	Thomas G. Thompson	Haymon, Rachel	2005-11-23	San Diego, California	2005-12-01	Academy Bay, Galapagos Islands
EPR 9N Ferrini						
KN182-13	Knorr	Forsyth, Donald	2006-03-28	Academy Bay, Galapagos Islands	2006-05-03	San Diego, California



MARINE
GEOSCIENCE
DATA
SYSTEM

Tools and Services	Data	Partners	Explore Further
Search for Data: GeoMapApp Data Link Create Maps & Grids Web Services Data for Google Earth Education Modules	Antarctic Bathymetry MARGINS Ridge 2000 Ridge Bathymetry Seismic Reflection	PetDB ODP Borehole LDEO Core Repository UTIG Processed Seis	What's New Related Links Contribute Data Meetings & Reports Acknowledgements Statistics & Holdings Advisory Committee

Data Link Result

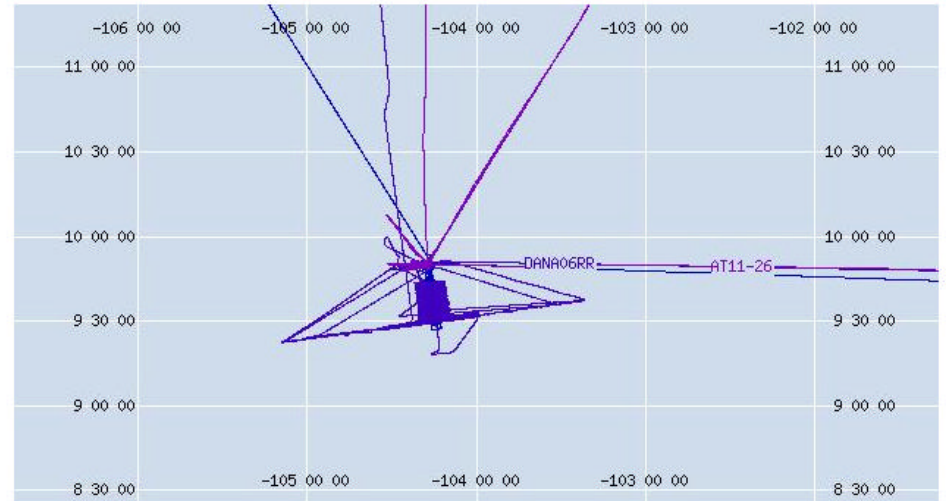
(Click on Entry ID to view full record.)

Map View



ENTRY	PLATFORM	CHIEF SCIENTIST	START DATE	PORT	END DATE
EPR-9N Tolstoy					
AT11-07	Atlantis	Schouten, Hans	2004-01-26	San Diego, California	2004-02-24
DANA06RR	Roger Revelle	Constable, Steven	2004-02-09	Puerto Caldera, Costa Rica	2004-03-09
AT11-09	Atlantis	VonDamm, Karen	2004-03-16	Puntarenas, Costa Rica	2004-04-02
AT11-10	Atlantis	Lutz, Richard	2004-04-07	Manzanillo, Mexico	2004-05-05
AT11-20	Atlantis	Lilley, Marvin	2004-11-05	San Diego, California	2004-11-26
AT11-26	Atlantis	Vetriani, Costantino	2005-04-23	Manzanillo, Mexico	2005-05-15
EPR-9N MGDS					
TN188	Thomas G. Thompson	Haymon, Rachel	2005-11-23	San Diego, California	2005-12-01
EPR-9N Ferrini					
KN182-13	Knorr	Forsyth, Donald	2006-03-28	Academy Bay, Galapagos Islands	2006-05-03
					San Diego, California

Data Link: Map View



- Click Map:
- Re-Center
 - Zoom In
 - Zoom Out
- Factor:
- Display Layers:
- Navigation
 - Stations
 - Global DEM *
 - Lat/Lon Grid
 - Coastlines
- *(under development)



Scale: 0 35 mi

Mode:





Tools and Services	Data	Partners
Search for Data: GeoMapApp Data Link Create Maps & Grids Web Services Data for Google Earth Education Modules	Antarctic Bathymetry MARGINS Ridge 2000 Ridge Bathymetry Seismic Reflection	PetDB ODP Borehole LDEO Core Repository UTIG Processed Seis

Explore Further

Data Link Entry : AT11-20

Click on active links to access data or information.

Platform: [Atlantis](#)
 Designation: AGOR-25
 Operator: [WHOI:Marine Operations](#)

- Project: Biocomplexity: Smart Sensors for In Situ Monitoring of Hydrothermal Vent Systems
- Project: Establishing a Role for Fe and S Microbial Metabolism in Ocean Crust Weathering ([Web site](#))
- Project: Time-Series Larval Studies in the Deep Sea ([Web site](#))
- Project: The Interaction of Microbial Biofilms and Fluid Chemistry on Larval Settlement ([Web site](#))

Chief Scientist : Lilley, Marvin
 Scientist : Bach, Wolfgang ([NSF OCE02-41791](#))
 Scientist : Beaulieu, Stace ([WHOI DOEI](#))
 Scientist : Booksh, Karl ([NSF OCE01-19999](#))
 Scientist : Edwards, Katrina ([NSF OCE02-41791](#))
 Scientist : Holloway, John ([NSF OCE01-19999](#))
 Scientist : McCollom, Thomas
 Scientist : Mullineaux, Lauren ([WHOI DOEI](#))
 Scientist : Rouxel, Olivier
 Student Graduate : Banning, Erin
 Student Graduate : Canovas, Peter
 Student Graduate : Poehls, Diane
 Student Graduate : Rogers, Dan
 Student Graduate : Santelli, Cara

Port: 2004-11-05 San Diego, California
 Port: 2004-11-26 Manzanillo, Mexico

WESN: [not available]

Survey Locations and Navigation:

Dive Class	Platform
HOV	Alvin

Station Type	Device Type	Investigator or Contact
Bottom	Incubation Chamber	Edwards_Katrina
Bottom:Deployed	Current_Meter	Mullineaux_Lauren
Bottom:Deployed	Sediment_Trap	Mullineaux_Lauren

Field Data Inventory:

Dive Type	Line Platform Type	Station Type	Data Type	Device Type	Device Info	Investigator or Contact
HOV(Alvin)			Bathymetry	Sonar Scanning	Imagenex:801	Lilley_Marvin
HOV(Alvin)			Photograph:Video:FG	Camera Video	WHOI:FramaGrabber	Lilley_Marvin

Data Link Result

(Click on Entry ID to view full record.)

Map View

ENTRY	PLATFORM	CHIEF SCIENTIST	START DATE	PORT	END DATE
EPR:9N Tolstoy					
AT11-07	Atlantis	Schouten, Hans	2004-01-26	San Diego, California	2004-02-24
DANA06RR	Roger Revelle	Constable, Steven	2004-02-09	Puerto Caldera, Costa Rica	2004-03-09
AT11-09	Atlantis	VonDamm, Karen	2004-03-16	Puntarenas, Costa Rica	2004-04-02
AT11-10	Atlantis	Lutz, Richard	2004-04-07	Manzanillo, Mexico	2004-05-05
AT11-20	Atlantis	Lilley, Marvin	2004-11-05	San Diego, California	2004-11-26
AT11-26	Atlantis	Vetriani, Costantino	2005-04-23	Manzanillo, Mexico	2005-05-15
EPR:9N MGDS					
TN188	Thomas G. Thompson	Haymon, Rachel	2005-11-23	San Diego, California	2005-12-01
EPR 9N Ferrini					
KN182-13	Knorr	Forsyth, Donald	2006-03-28	Academy Bay, Galapagos Islands	2006-05-03

Direct links to other data resources

Survey Locations and Navigation:

Dive Class	Platform
HOV	Alvin

Station Type	Device Type	Investigator or Contact
Bottom	Incubation_Chamber	Edwards_Katrina
Bottom:Deployed	Current_Meter	Mullineaux_Lauren
Bottom:Deployed	Sediment_Trap	Mullineaux_Lauren


Field Data Inventory:

Dive Type	Line Platform Type	Station Type	Data Type	Device Type
HOV(Alvin)			Bathymetry	Sonar Scanning
HOV(Alvin)			Photograph:Video:FG	Camera Video
HOV(Alvin)			Sample:Biology	
HOV(Alvin)			Sample:Fluid	
HOV(Alvin)			Sample:Rock	

Derived Data Products:

Data Type	Device Type	Data Class	Investigator or Contact	Feature ID
Bathymetry	Sonar Scanning	grid	Ferrini_Vicki	
Bathymetry	Sonar Scanning	image	Ferrini_Vicki	

Attachments:

 Science Report

CruiseID: AT11-20 CruiseName: EPR November 2004 View Highlights: 

Alvin Dive	Pilot	Observers	Synopsis
4048	Anthony Tarantino	Marv Lilley Yoon Chang Kim	ran bio transect from Ty and IO to Bio Vent Took temperatures of hot vents and took Ramen and SPR data
4049	Bruce Strickrott	Tom McCollom Olivier Rouxel	start at off axis deployment site, no luck locating equipment. good work at Tica deploying samples and recovery samples arm failed [wouldn't let go of hi t probe] hi t failed as well lost use of rudder, madness ensued continued dive as well as possible
4050	Pat Hickey	Eric Olson Brian Dable	Start dive at Mkr 141. Raman Grounded so went to Alvinella Pillar. Tested Raman for one data set the secured. Moved to Ty and Res-probed. Moved to P-vent and dropped smoker instrument down hole. Move to Bio9. 3 majors and 3GT at 9, 9' and 9". Res-probed all 3 smokers. Moved to East Wall and located Mooring. Moved to X-5 and Res-probed. Res-



Alvin Frame-Grabber: EPR November 2004 Dive4048

DAQ_ActiveDive:Alvin DAO Time: 2004/11/11 15:30:31 Hdg: +26.956 Alt: 1.1 HiTemp: 2.13 C
 NavTime: 2004/11/11 15:30:31 Lat: 9 50.061300 N Depth: +2502.730 LoTemp:
 Lon: 104 17.429040 W TDepth: 2503.83 SVel:
 Type: ASNAP NavAttSrc: PWHANA X: +4709.990 Y: +77529.881 DopAlt: -0.012 MagX:
 Pitch: -2.822 Roll: -0.349 MagY:
 EType: Event MagZ:
 MagT:

To browse, click on TimeBar or use Nav Buttons

EPR November 2004 Dive4048 Snapshot #0001

ith
l basalt
vent
blocks
t max
graben
major

Download Data

Port: 2004-11-05 San Diego, California
Port: 2004-11-26 Manzanillo, Mexico

WESN: [not available]

Survey Locations and Navigation:

- [Listing](#) Submersible Dives (DSV:Alvin)
- [Listing](#) Deployed Stations (Current_Meter)
- [Listing](#) Deployed Stations (Incubation_Ch)
- [Listing](#) Deployed Stations (Sediment_Tra)

Field Data Inventory:

- [Listing](#) Camera_Video_FG (Alvin Dives) (
- [Listing](#) Samples_Biology (Alvin Dives) (E
- [Listing](#) Samples_Fluid (Alvin Dives) (Edw
- [Listing](#) Samples_Rock (Alvin Dives) (Edw
- [Listing](#) Sonar_Scanning (Alvin Dives) (Im

Derived Data Products:

- [Download](#) Grids:Bathymetry
- [Download](#) Images:Bathymetry

Attachments:

- Science Report

Data Link Grids

Address: http://www.marine-geo.org/link/ado_grids.php?id=AT11-20&ado_type=Bathymetry

Marine Geoscience Data Management System	Applications	Data	Partners	Explore Further
	GeoMapApp Data Link Create Maps & Grids	Antarctic Bathymetry MARGINS Ridge 2000 Ridge Bathymetry Seismic Reflection	PeiDB ODP Borehole LDEO Core Repository UTIG Processed Seis.	Related Links Contribute Cruise Info Meetings & Reports Acknowledgements Statistics & Holdings


Data Link Gridded Data

BATHYMETRY GRIDS: AT11-20

File Name	File Size (MB)	West	East	South	North	X Cell	Y Cell	Units	Masked	Format	Contributor	Image
4051ascii_grid_LL.txt	0.126	-104.283	-104.279	9.771	9.788	0.00001	0.00001	Degrees	FALSE	ASCII	Ferrini_Vicki	-
4051ascii_grid_UTM.txt	0.126	578605.000	579123.000	1080170.000	1082030.000	1.00000	1.00000	Meters	FALSE	ASCII	Ferrini_Vicki	-
4052ascii_grid_LL.txt	0.057	-104.293	-104.291	9.837	9.846	0.00001	0.00001	Degrees	FALSE	ASCII	Ferrini_Vicki	-
4052ascii_grid_UTM.txt	0.057	577509.000	577731.000	1087520.000	1088510.000	1.00000	1.00000	Meters	FALSE	ASCII	Ferrini_Vicki	-
4053ascii_grid_LL.txt	0.134	-104.247	-104.241	9.479	9.496	0.00001	0.00001	Degrees	FALSE	ASCII	Ferrini_Vicki	-
4053ascii_grid_UTM.txt	0.134	582617.000	583311.000	1047920.000	1049730.000	1.00000	1.00000	Meters	FALSE	ASCII	Ferrini_Vicki	-
4054ascii_grid_LL.txt	0.033	-104.292	-104.291	9.835	9.840	0.00001	0.00001	Degrees	FALSE	ASCII	Ferrini_Vicki	-
4054ascii_grid_UTM.txt	0.033	577642.000	577785.000	1087250.000	1087850.000	1.00000	1.00000	Meters	FALSE	ASCII	Ferrini_Vicki	-
4055ascii_grid_LL.txt	0.090	-104.268	-104.246	9.479	9.482	0.00001	0.00001	Degrees	FALSE	ASCII	Ferrini_Vicki	-
4055ascii_grid_UTM.txt	0.090	580367.000	582784.000	1047950.000	1048200.000	1.00000	1.00000	Meters	FALSE	ASCII	Ferrini_Vicki	-
4056ascii_grid_LL.txt	0.041	-104.294	-104.291	9.839	9.847	0.00001	0.00001	Degrees	FALSE	ASCII	Ferrini_Vicki	-
4056ascii_grid_UTM.txt	0.041	577436.000	577708.000	1087670.000	1088530.000	1.00000	1.00000	Meters	FALSE	ASCII	Ferrini_Vicki	-
4057ascii_grid_LL.txt	0.145	-104.291	-104.275	9.828	9.838	0.00001	0.00001	Degrees	FALSE	ASCII	Ferrini_Vicki	-
4057ascii_grid_UTM.txt	0.145	577684.000	579464.000	1086470.000	1087620.000	1.00000	1.00000	Meters	FALSE	ASCII	Ferrini_Vicki	-
4058ascii_grid_LL.txt	0.100	-104.294	-104.288	9.835	9.847	0.00001	0.00001	Degrees	FALSE	ASCII	Ferrini_Vicki	-
4058ascii_grid_UTM.txt	0.100	577470.000	578038.000	1087240.000	1088540.000	1.00000	1.00000	Meters	FALSE	ASCII	Ferrini_Vicki	-
4059ascii_grid_LL.txt	0.090	-104.298	-104.288	9.834	9.840	0.00001	0.00001	Degrees	FALSE	ASCII	Ferrini_Vicki	-
4059ascii_grid_UTM.txt	0.090	576936.000	578127.000	1087190.000	1087810.000	1.00000	1.00000	Meters	FALSE	ASCII	Ferrini_Vicki	-
4060ascii_grid_LL.txt	0.080	-104.294	-104.289	9.838	9.846	0.00001	0.00001	Degrees	FALSE	ASCII	Ferrini_Vicki	-
4060ascii_grid_UTM.txt	0.080	577445.000	577939.000	1087570.000	1088500.000	1.00000	1.00000	Meters	FALSE	ASCII	Ferrini_Vicki	-
4061ascii_grid_LL.txt	0.198	-104.294	-104.288	9.826	9.848	0.00001	0.00001	Degrees	FALSE	ASCII	Ferrini_Vicki	-

[DMS Home](#) |
 [About Us](#) |
 [Contact Us](#) |
 [Terms of Use](#) |
 [Lamont-Doherty Earth Observatory](#) |
 [National Science Foundation](#)

Dynamically Generated Lists to Aid Ongoing Research Programs

 MARINE GEOSCIENCE DATA SYSTEM	Tools and Services	Data	Partners	Explore Further
	Search for Data: GeoMapApp Data Link Create Maps & Grids Web Services Data for Google Earth Education Modules	Antarctic Bathymetry MARGINS Ridge 2000 Ridge Bathymetry Seismic Reflection	PetDB ODP Borehole LDEO Core Repository UTIG Processed Seis	What's New Related Links Contribute Data Meetings & Reports Acknowledgements Statistics & Holdings Advisory Committee

Ridge 2000 Data Portal

This page provides access to cruise information and data collected during [Ridge 2000](#) funded projects. Learn more about this web site by browsing the [What's New page](#), and reading other [Project Related Documents](#).

You can [download forms](#) to document your field program.

Use [GeoMapApp](#) to explore the global topography database, create and download custom maps and grids as well as multibeam ping files. With GeoMapApp you can also view and explore trackline gravity and magnetics data, geochemical data from PetDB, seismicity, and seismic reflection profiles.

Use [Data Link](#) to search for a cruise or data type of interest by keyword or geographic region.

Use [Create Maps and Grids](#) to generate a quick bathymetry map or grid for a region of interest.

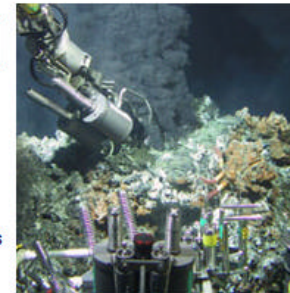


Photo by Karen Von Damm

Study Sites	Endeavor Segment (Juan de Fuca Ridge) Science Plan LIST DATA SETS - - by Expedition (R2K-funded) - by Expedition (all) - by Data Type (R2K-funded) - by Data Type (all) Create Map/Grid Deployed Instruments Vent List Related Links	Eastern Lau Spreading Center (Lau Basin) Science Plan LIST DATA SETS - - by Expedition (R2K-funded) - by Expedition (all) - by Data Type (R2K-funded) - by Data Type (all) Create Map/Grid Deployed Instruments Vent List Related Links	8°-11°N Segment (East Pacific Rise) Science Plan LIST DATA SETS - - by Expedition (R2K-funded) - by Expedition (all) - by Data Type (R2K-funded) - by Data Type (all) Create Map/Grid Deployed Instruments Vent List Related Links
			Two red arrows point to the Deployed Instruments and Vent List links in this column.



MARINE
GEOSCIENCE
DATA
SYSTEM

Tools and Services	Data	Partners	Explore Further
Search for Data: GeoMapApp Data Link Create Maps & Grids Web Services Data for Google Earth Education Modules	Antarctic Bathymetry MARGINS Ridge 2000 Ridge Bathymetry Seismic Reflection	PacDR ODP Borehole LDEO Core Repository UTIG Processed Sals	What's New Related Links Contribute Data Meetings & Reports Acknowledgements Statistics & Holdings Advisory Committee

Deployed instruments

Data Link Station Data

We strive to ensure that the information presented on these pages is as accurate as has been provided to us. Information is not intended for navigation purposes.

[Search for Deployed Instruments by year](#)

[Download this Table](#)

Instruments Currently On Bottom



(Click for Enlarged Images)
[List Stations](#)

Instruments Currently On Bottom: Blow-up of EPR 9°50'N area

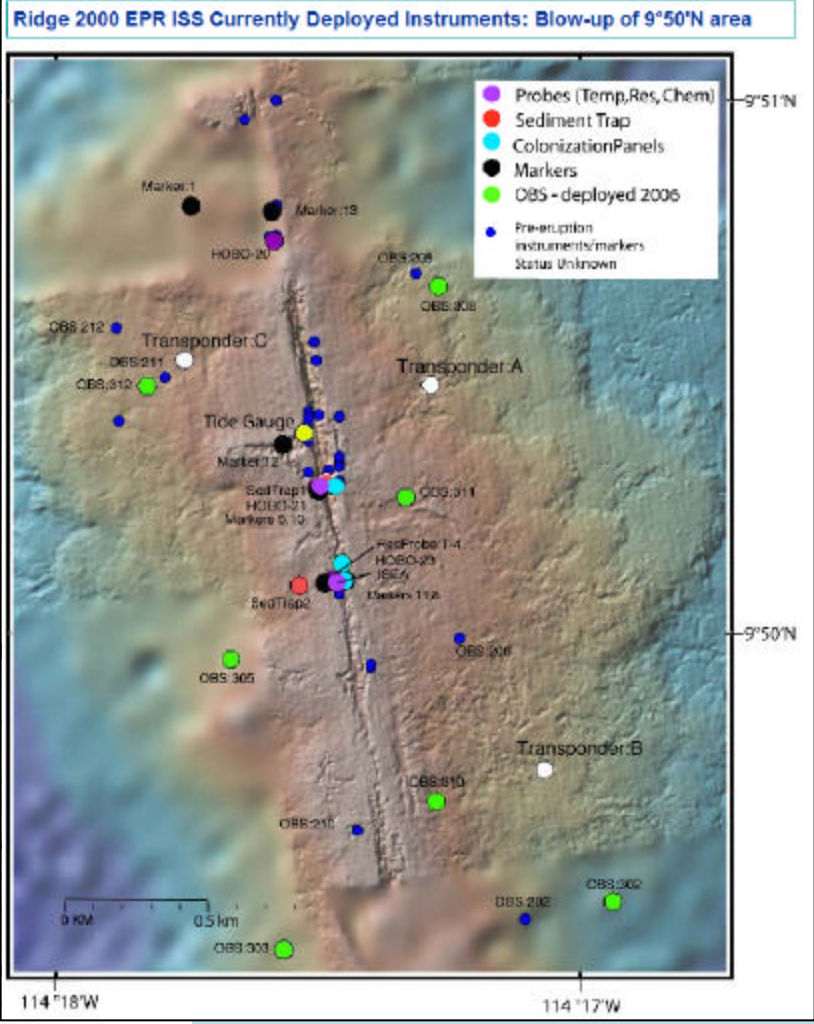


(Click for Enlarged Images)
[List Stations](#)

STATIONS

(Click on active links to access data or additional information) **8°-11°N Segment (East Pacific Rise): CURRENTLY ON BOTTOM**

Entry	Dive Type/ID	Line Type/ID	Station Activity	Device Type/ID	Target	Investigator	Start Date/Time	Grid
AT15-06	Alvin: 4207		Bottom: Deployed	Probe: Temperature: HOBO-23	EPR:9N:1o	VonDamm_Karen	2006-07-01 20:48:00	
<i>Location description = 1o. Location method = transponder. Grid Origin = 09N08 104W20.</i>								
AT15-06	Alvin: 4207		Bottom: Deployed	Probe Resistivity: T-44	EPR:9N:1o	Lilley_Marvin	2006-07-01 20:44:00	
<i>Will be recovered in November 2006. Location description = 1o vent. Location method = transponder. Grid Origin = 09N08 104W20.</i>								
AT15-06	Alvin: 4207		Bottom: Deployed	Probe Chemistry: ISEA: ISEA	EPR:9N	Luther_George	2006-07-01 18:28:00	-104.291011
<i>Location description = Mkr 8. Location method = transponder. Grid Origin = 09N08 104W20.</i>								




Search Capabilities

- DataLink
 - Text-based
- GeoMapApp
 - Map-based

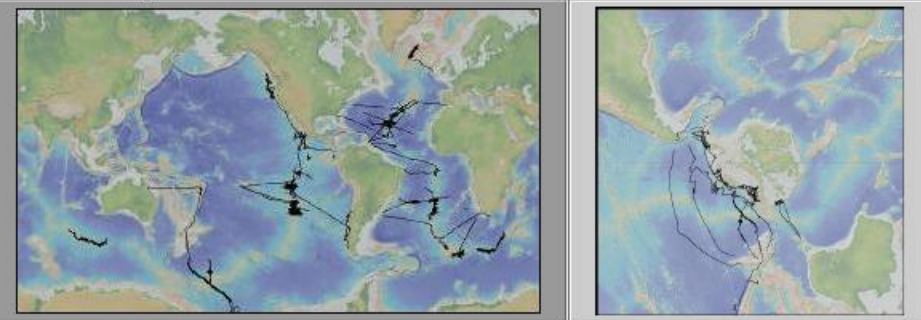
Tools and Services	Data	Partners	Explore Further	
 MARINE GEOSCIENCE DATA SYSTEM	Search for Data Data Finder Data Link Create Maps & Charts Web Services Data for Google Earth Education Materials	Antarctic Bathymetry MAROPS RPOD 2000 RPOD Bathymetry Seismic Reflection	FOUR ODP Research LRPO Data Repository UTM Processed Sets	What's New Related Links Contribute Data Meetings & Reports Acknowledgements Statistics & History Advisory Committee

MGDS: Data Link

Search Location By: <input type="text" value="Geographic Region"/>	Select Data By: <input type="text" value="All"/>
Geographic Region: <input type="text" value="North: 90, West: -180, East: 180, South: 90"/>	Device Type: <input type="text" value="ADCP"/>
Focus/Study Site: <input type="text" value="(world)"/>	Data Type: <input type="text" value="ADCP"/>
Field Program ID: <input type="text" value="(all)"/>	<input type="checkbox"/> Any Data <input type="checkbox"/> Field Only <input type="checkbox"/> Derived Only
Institution: <input type="text" value="(all)"/>	Sort Output By: <input type="radio"/> Field Program ID <input type="radio"/> Data Type <input type="radio"/> Device Type
Funding Agency: <input type="text" value="(all)"/>	<input type="button" value="Search"/> <input type="button" value="Clear"/>
Funding Initiative: <input type="text" value="(all)"/>	
Platform: <input type="text" value="(all)"/>	<input type="button" value="View Deployed Instruments"/>
Operator: <input type="text" value="(all)"/>	
Port Visit: <input type="text" value="(all)"/>	
Start Date: <input type="text" value="1950"/> <input type="text" value="01"/> <input type="text" value="01"/>	
End Date: <input type="text" value="2020"/> <input type="text" value="12"/> <input type="text" value="31"/>	

Choose a Base Map

Select a Base Map



Mercator Selected



MARINE
GEOSCIENCE
DATA
SYSTEM

Tools and Services	Data	Partners	Explore Further
Search for Data: GeoMapApp Data Link Create Maps & Grids Web Services Data for Google Earth Education Modules	Antarctic Bathymetry MARGINS Ridge 2000 Ridge Bathymetry Seismic Reflection	PetDB ODP Borehole LDEO Core Repository UTIG Processed Seis	What's New Related Links Contribute Data Meetings & Reports Acknowledgements Statistics & Holdings Advisory Committee

MGDS: Data Link

Search Location By: Focus/Study Site

Geographic Region:

North

90

West East

-180 180

South

-90

Focus/Study Site: Mid-Ocean Ridges (all)

Select Data By: All

Device Type: ADCP

Data Type: ADCP *

* indicates data online (viewable and/or downloadable)

Select: Any Data Field Only Derived Only

Field Program ID: (all)

(e.g. cruise, flight, transect...)

include submersible dives

Investigator: (all)

Institution: (all)

Funding Agency: (all)

Funding Initiative: (all)

Platform: Alvin

Operator: (all)

Port Visit: (all)

Start Date: (yyyy-mm-dd) 1950 01 01

End Date: (yyyy-mm-dd) 2020 12 31

Sort Output By: Field Program ID Data Type Device Type

Search **Clear**

[View Deployed Instruments](#)

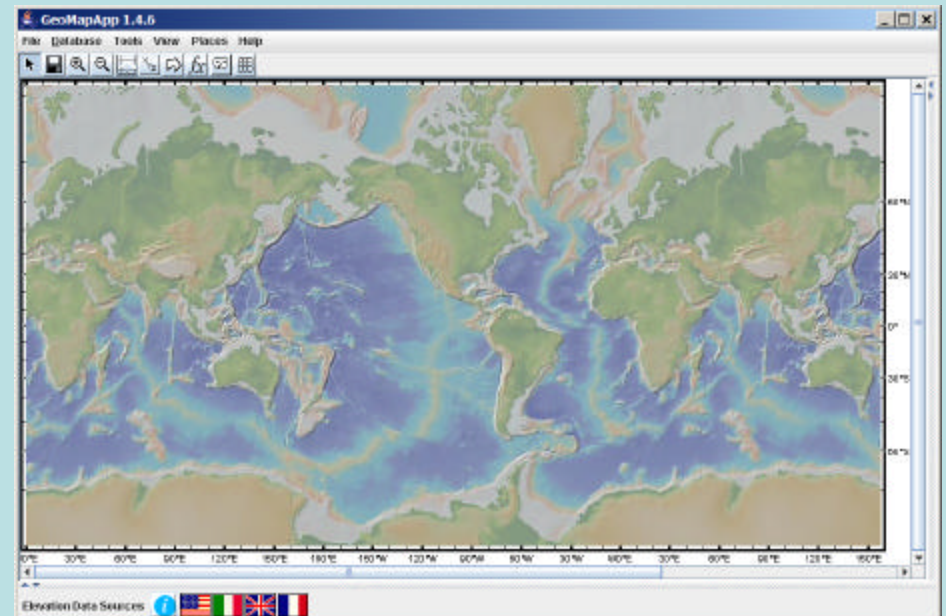
Data Link Result

(Click on Entry ID to view full record.)

ENTRY	PLATFORM	CHIEF SCIENTIST	START DATE	PORT	END DATE	PORT
Alvin-3961	Alvin	Ding, Kang	2004-02-03	R/V Atlantis	2004-02-03	R/V Atlantis
Alvin-3963	Alvin	They, Maurice	2004-02-06	R/V Atlantis	2004-02-06	R/V Atlantis
Alvin-3964	Alvin	Seewald, Jeffrey	2004-02-07	R/V Atlantis	2004-02-07	R/V Atlantis
Alvin-3965	Alvin	Schouten, Hans	2004-02-08	R/V Atlantis	2004-02-08	R/V Atlantis
Alvin-3966	Alvin	Perfit, Michael	2004-02-09	R/V Atlantis	2004-02-10	R/V Atlantis
Alvin-3967	Alvin	They, Maurice	2004-02-10	R/V Atlantis	2004-02-11	R/V Atlantis
Alvin-3968	Alvin	Foman, Daniel	2004-02-11	R/V Atlantis	2004-02-11	R/V Atlantis
Alvin-3969	Alvin	Berry, Anthony	2004-02-12	R/V Atlantis	2004-02-12	R/V Atlantis
Alvin-3970	Alvin	Perfit, Michael	2004-02-13	R/V Atlantis	2004-02-13	R/V Atlantis
Alvin-3971	Alvin	Ridley, Ian	2004-02-14	R/V Atlantis	2004-02-14	R/V Atlantis
Alvin-3972	Alvin	Ding, Kang	2004-02-15	R/V Atlantis	2004-02-15	R/V Atlantis
Alvin-3973	Alvin	Eppard, Gavin	2004-02-16	R/V Atlantis	2004-02-16	R/V Atlantis
Alvin-3974	Alvin	Spears, Mark	2004-02-17	R/V Atlantis	2004-02-17	R/V Atlantis
Alvin-3975	Alvin	They, Maurice	2004-02-18	R/V Atlantis	2004-02-18	R/V Atlantis



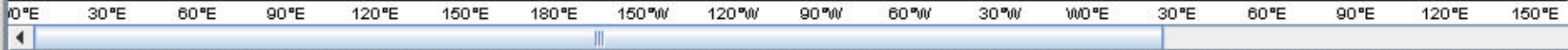
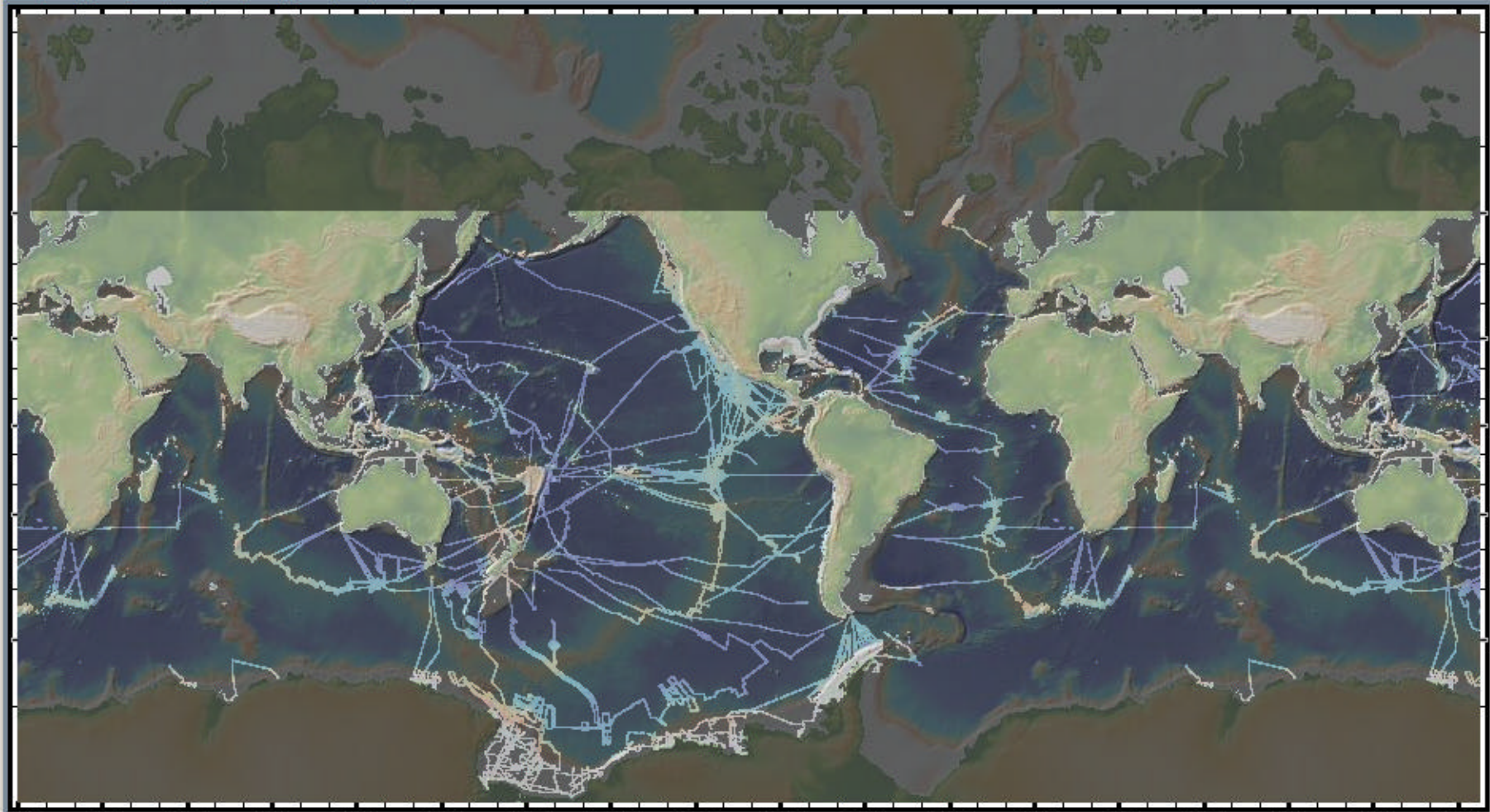
- Map-based tool for exploring marine geoscience data
- Dynamically generated bathymetry grids and maps
- PetDB
- Seismicity
- Bottom photos
- Import your own data



www.geomapapp.org

GeoMapApp 1.4.6

File Database Tools View Places Help

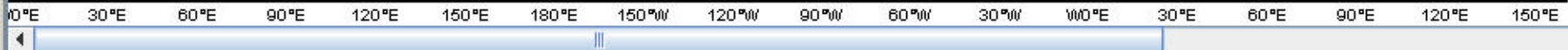
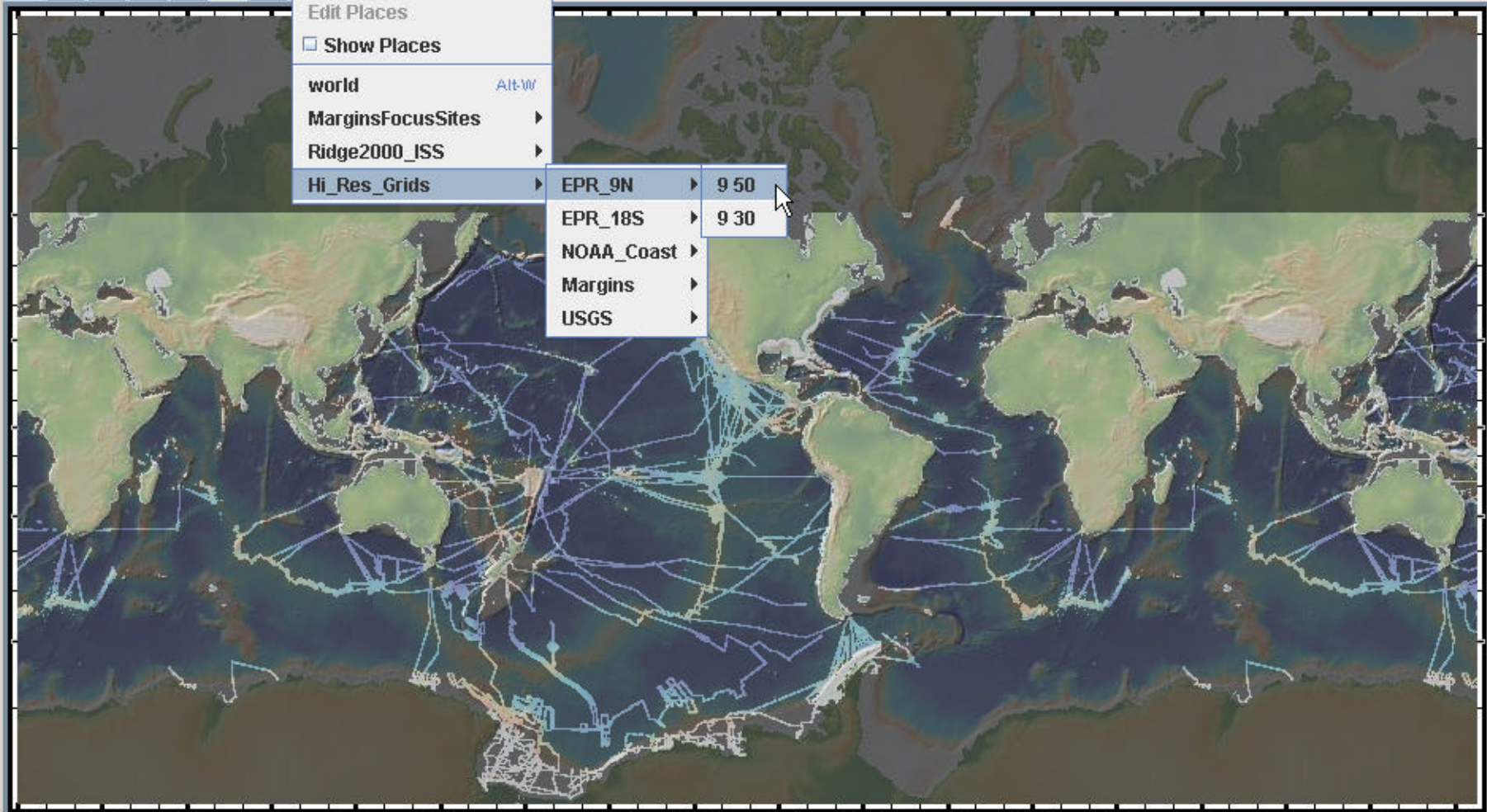


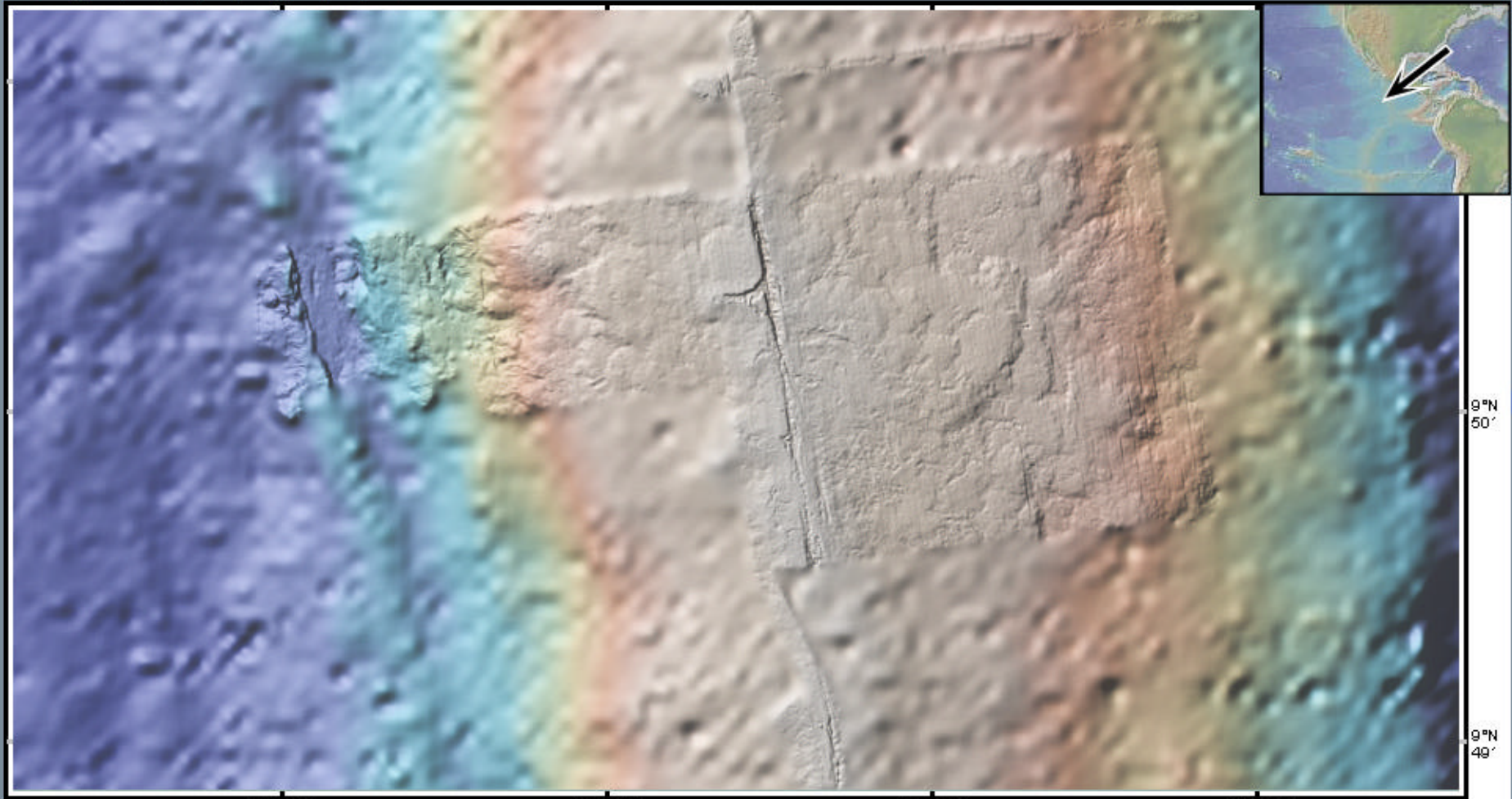
Elevation Data Sources     



- Add Place
- Edit Places
- Show Places
- world Alt-W
- MarginsFocusSites >
- Ridge2000_ISS >
- Hi_Res_Grids >

- EPR_9N > 9 50
- EPR_18S > 9 30
- NOAA_Coast >
- Margins >
- USGS >





104°W19'

104°W18'

104°W17'

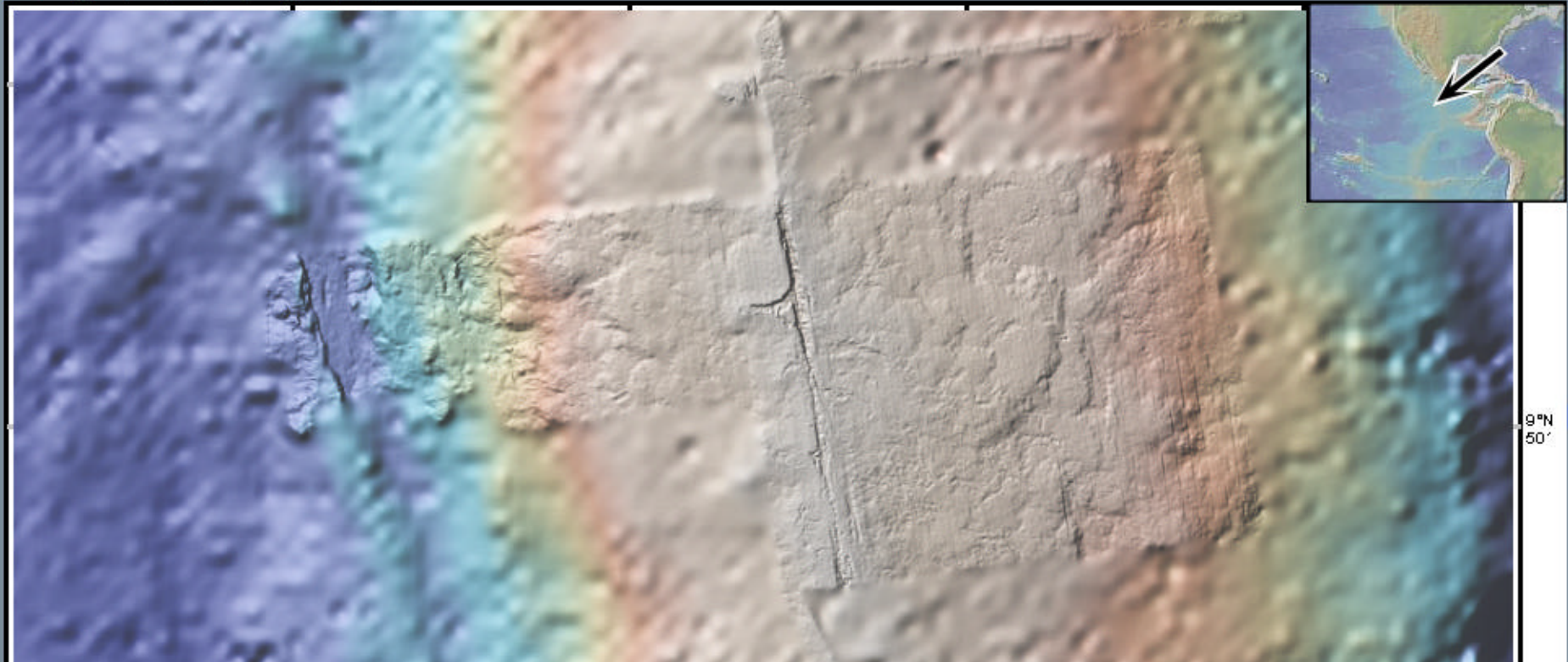
104°W16'

9°N
50'

9°N
49'

Elevation Data Sources





9°N
50'

104°W19' 104°W18'

Elevation Data Sources  


Grid Options

Data Type: Topography Reload Fill In Close Palette Tool 3D View

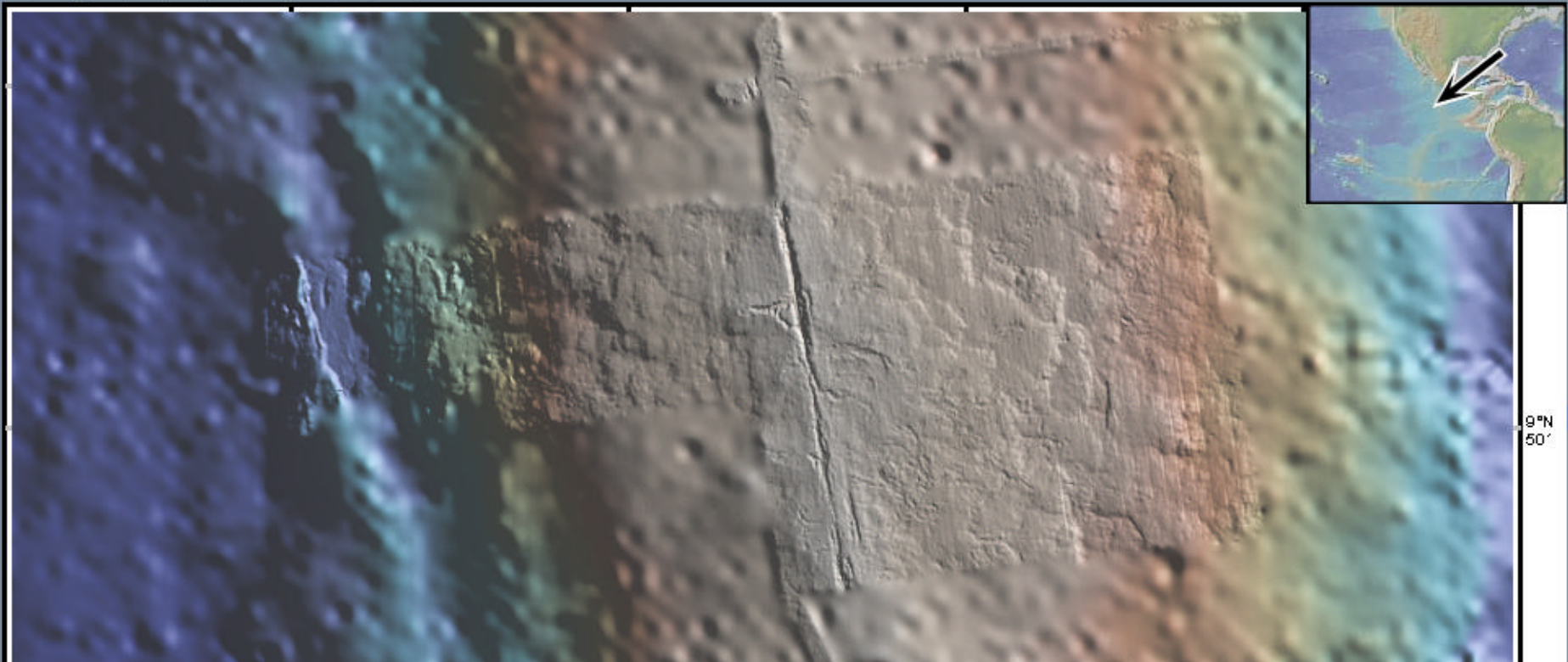
Navigation: Palettes

Color Scale
H-S-B

Profile
A cross-sectional profile of the terrain, showing elevation changes. The x-axis is labeled with values: 1,900, -2,800, -2,700, -2,600, -2,500, -2,400.

Sun Illumination

Declination: -45
Inclination: 45

Vertical Exaggeration
V. E.: 4



9°N
50'

104°W19'

104°W18'

Elevation Data Sources



Grid Options

Data Type: Topography

Reload Fill In Close Palette Tool 3D View

50 50 Palettes

Sun Illumination

Declination: 50.4

Inclination: 20.9

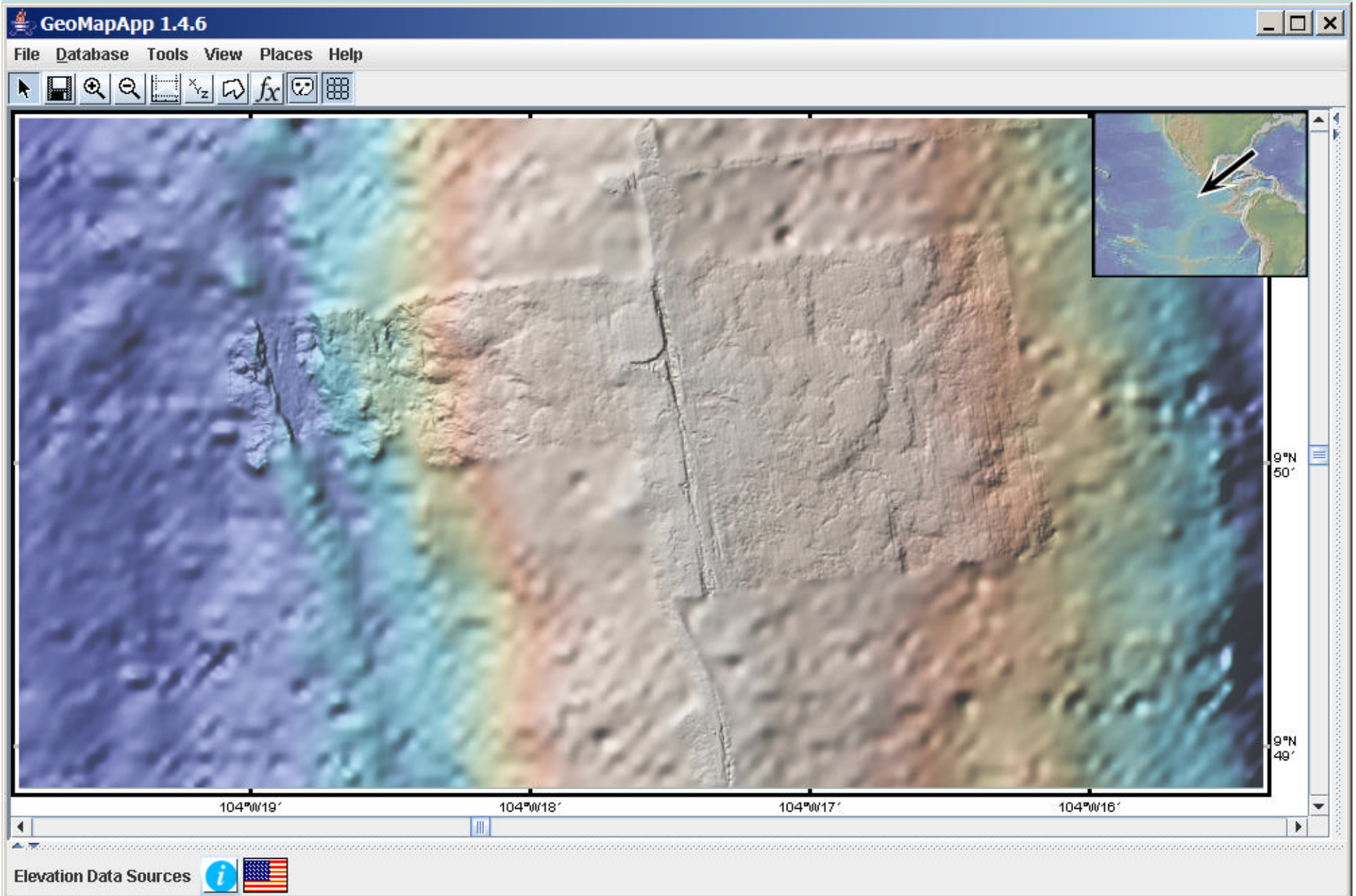
Vertical Exaggeration

V. E.: 3.04

H-S-B

A dialog box titled "Grid Options" for configuring the topographic data display. It includes a "Data Type" dropdown set to "Topography", buttons for "Reload", "Fill In", and "Close", and radio buttons for "Palette Tool" (selected) and "3D View". It features a "Sun Illumination" section with a circular diagram and input fields for "Declination" (50.4) and "Inclination" (20.9). Below this is a "Vertical Exaggeration" section with a small graph and an input field for "V. E." (3.04). The main part of the dialog is a visualization area with a color bar on the left labeled "H-S-B" and a central plot showing a cross-section of the terrain with a color gradient. The x-axis of the plot is labeled with values: 2.800, -2.800, -2.700, -2.600, -2.500, and -2.400.

Load from database



Load from database

GeoMapApp 1.4.6

File Database Tools View Places Help

Layers

name	type	visible	color	Line
no shape				

Import Layers

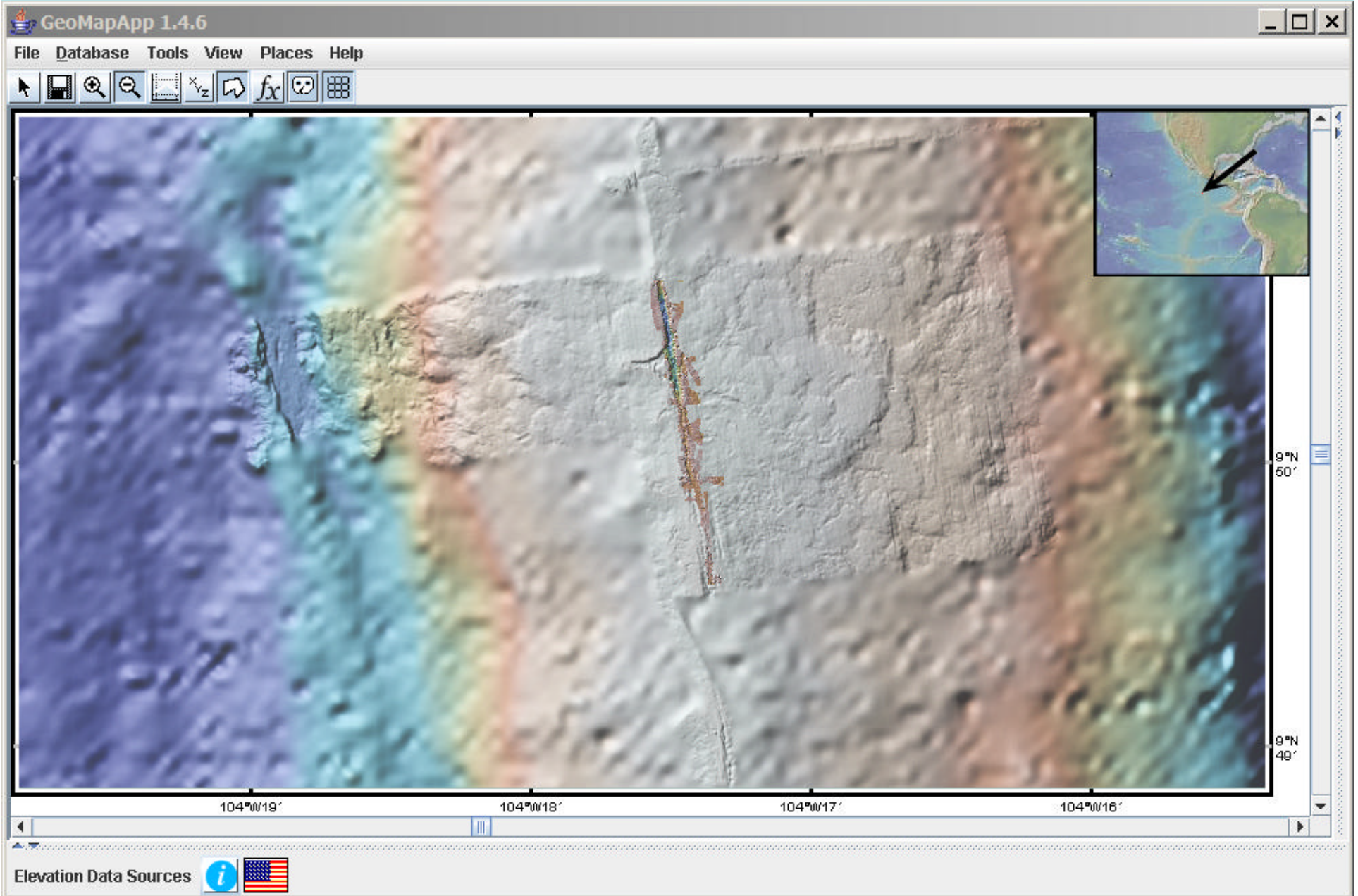
- Open Shape File
- Import Grid
- Open Shape URL
- Select from list

- Photos
- Grids
- Ridge2000 Study Sites
 - East Pacific Rise - 9 North
 - Bathymetry Grids
 - Ultra-high-resolution Imagenex Grids (ABE) - Fornari et al.(2004)
 - Ultra-high-resolution Imagenex Grids (Alvin) - Ferrini et al.(2006)
 - Clipperton North TN188: Simrad EM300 - White et al.(2006)
 - Clipperton South TN188: Simrad EM300 - White et al.(2006)
 - Magnetics Grids
 - Sidescan Grids
 - Seismic Layer Thickness Grids
 - Photos
 - Stations
 - Juan de Fuca - Endeavour
 - Lau Basin

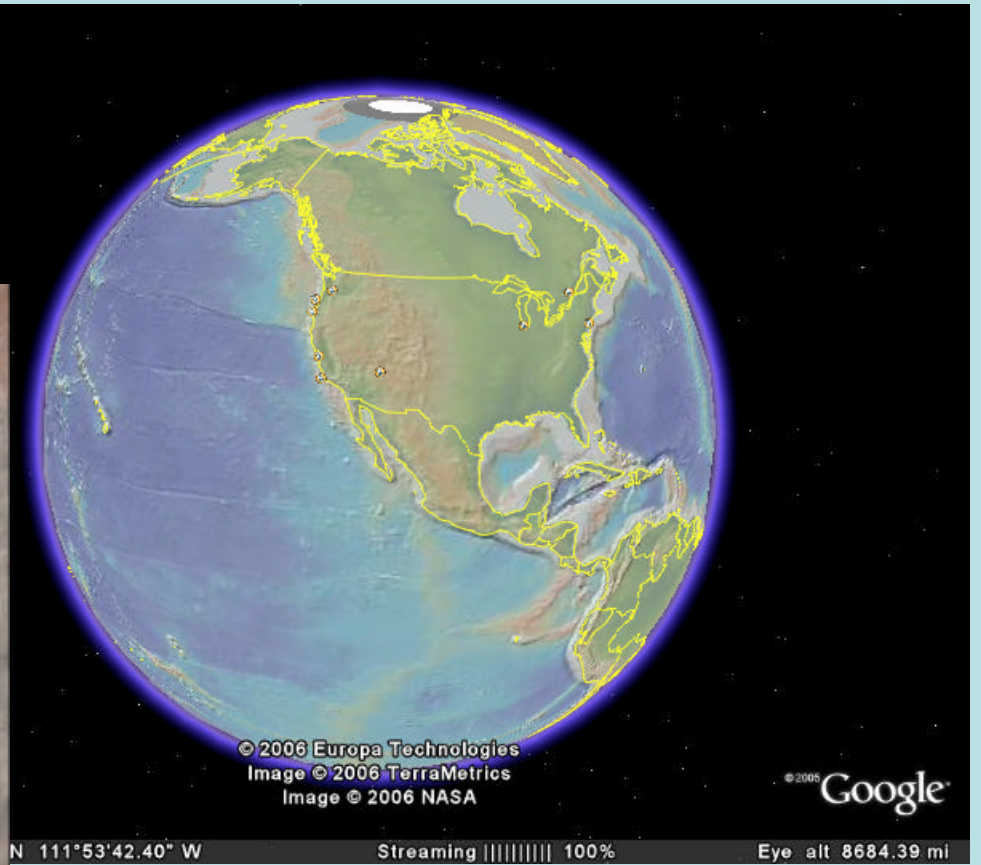
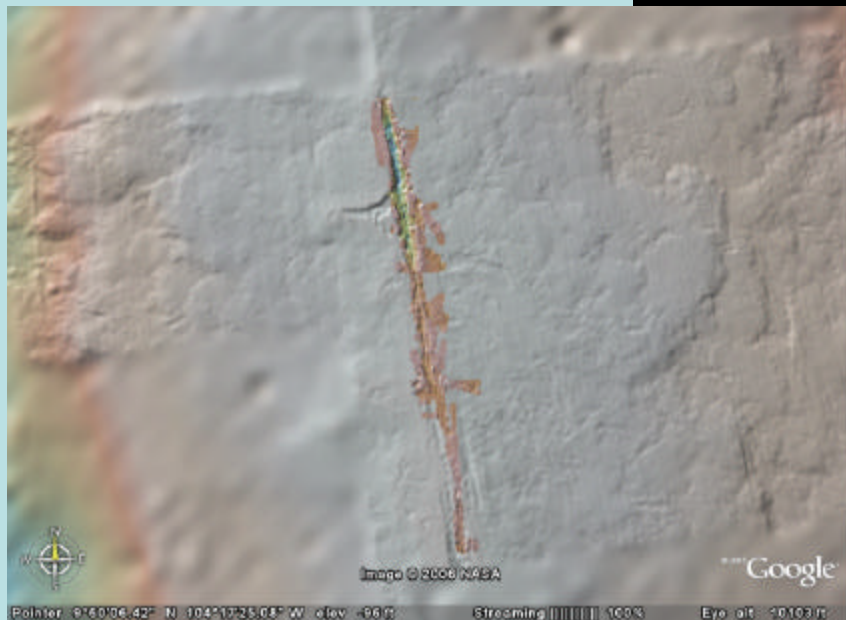
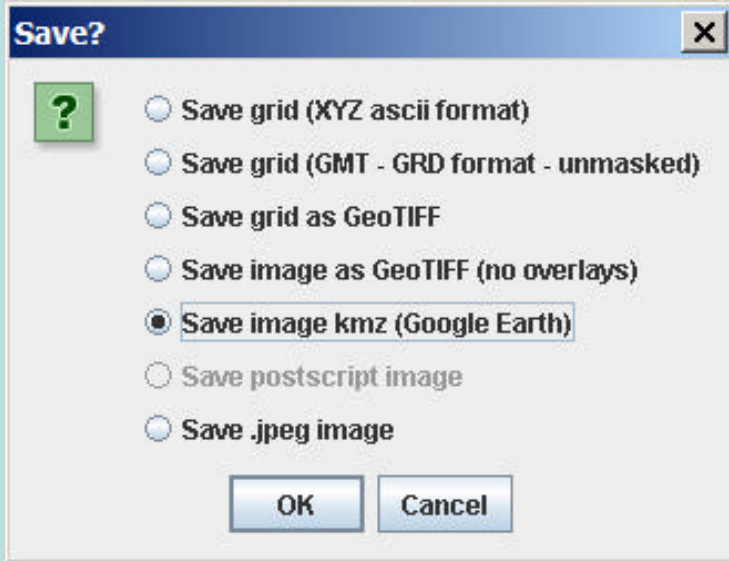
OK Cancel

Elevation Data Sources

Load from database



Grid Export Capabilities



Load from Database

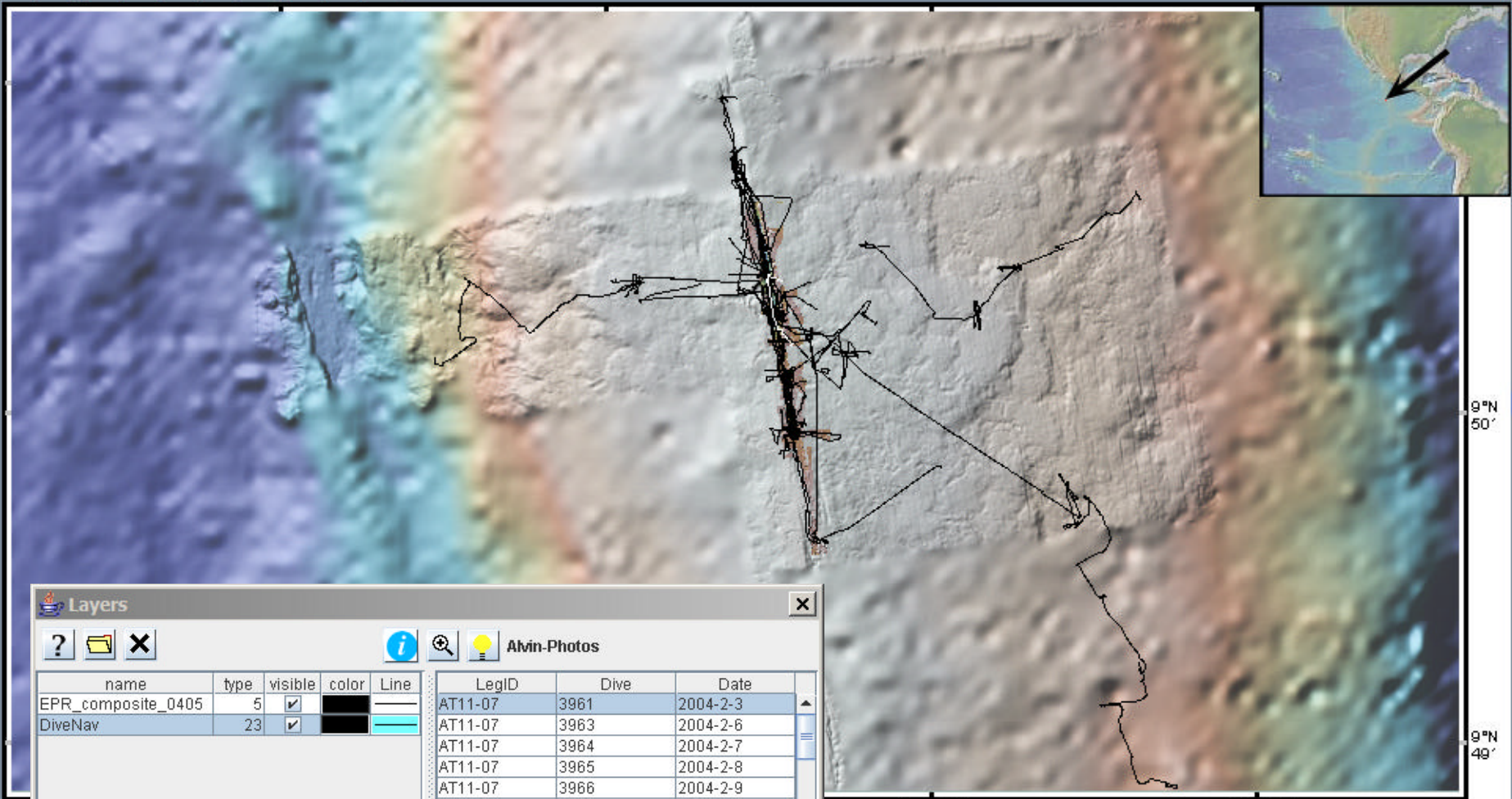
The screenshot displays the GeoMapApp 1.4.6 interface. The main window shows a bathymetric map of the East Pacific Rise. An inset map in the top right corner shows the location of the study area in the Pacific Ocean, with a black arrow pointing to the East Pacific Rise. The 'Import Layers' dialog box is open, showing a tree view of data sources. The 'Select from list' option is selected. The tree view shows the following structure:

- Open Shape File
- Import Grid
- Open Shape URL
- Select from list (selected)
- Photos
 - Grids
 - Ridge2000 Study Sites
 - East Pacific Rise - 9 North
 - Bathymetry Grids
 - Magnetics Grids
 - Sidescan Grids
 - Seismic Layer Thickness Grids
 - Photos
 - Photos from Alvin Dives (highlighted)
 - Stations
 - Juan de Fuca - Endeavour
 - Lau Basin

The dialog box has 'OK' and 'Cancel' buttons at the bottom. The main map shows a color-coded bathymetric map with a scale bar at the bottom indicating coordinates from 104°W19' to 104°W16' and 9°N 50' to 9°N 49'. The 'Elevation Data Sources' section at the bottom left includes an information icon and the United States flag.

GeoMapApp 1.4.6

File Database Tools View Places Help



Layers

Admin-Photos

name	type	visible	color	Line
EPR_composite_0405	5	<input checked="" type="checkbox"/>	Black	—
DiveNav	23	<input checked="" type="checkbox"/>	Black	—

LegID	Dive	Date
AT11-07	3961	2004-2-3
AT11-07	3963	2004-2-6
AT11-07	3964	2004-2-7
AT11-07	3965	2004-2-8
AT11-07	3966	2004-2-9
AT11-07	3967	2004-2-10
AT11-07	3968	2004-2-11
AT11-07	3969	2004-2-12
AT11-07	3970	2004-2-13
AT11-07	3971	2004-2-14
AT11-07	3972	2004-2-15
AT11-07	3973	2004-2-16

104°W17'

104°W16'

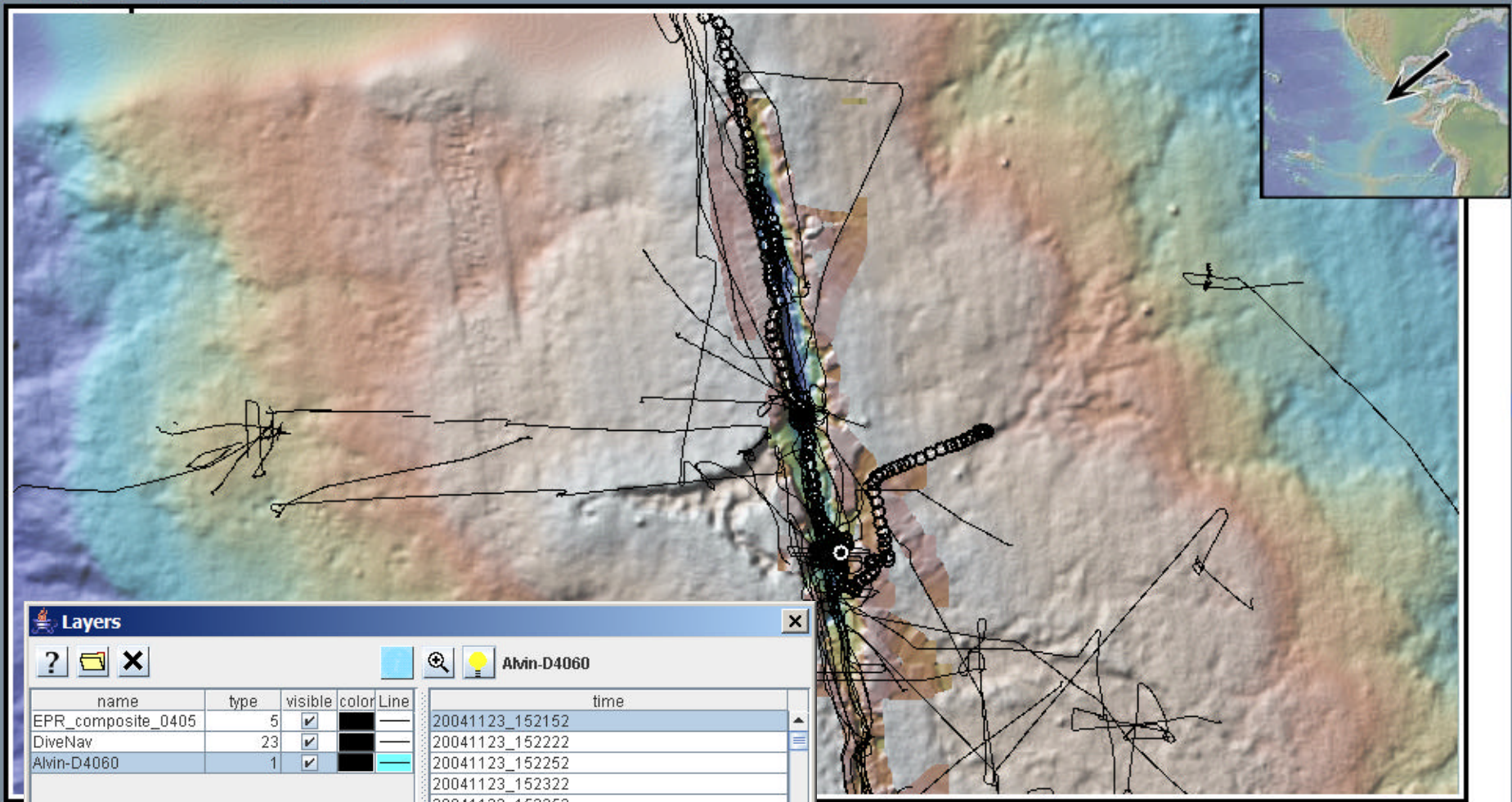
9°N 50'

9°N 49'

Ele

GeoMapApp 1.4.6

File Database Tools View Places Help



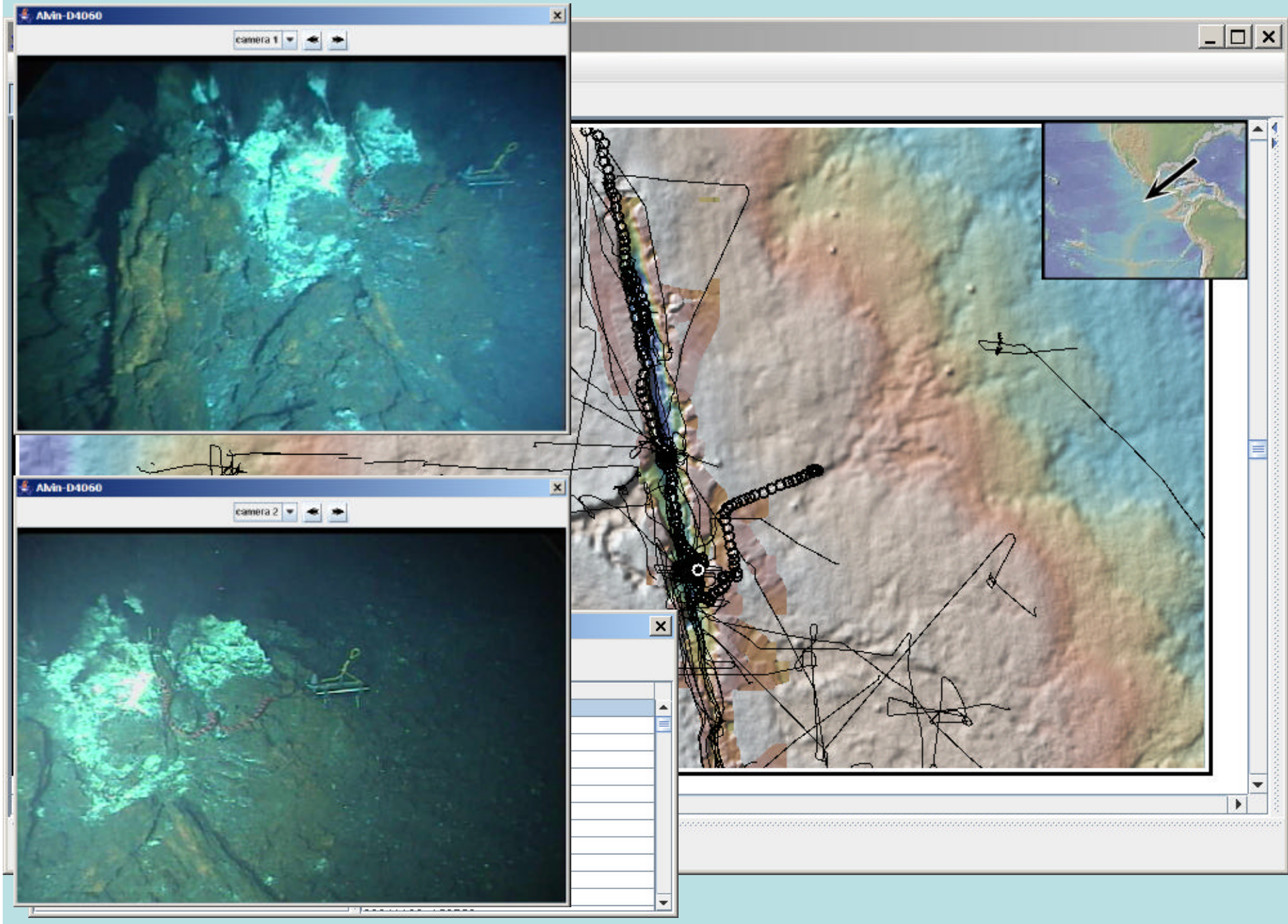
Layers



name	type	visible	color	Line
EPR_composite_0405	5	<input checked="" type="checkbox"/>	black	—
DiveNav	23	<input checked="" type="checkbox"/>	black	—
Alvin-D4060	1	<input checked="" type="checkbox"/>	black	—

Alvin-D4060

time
20041123_152152
20041123_152222
20041123_152252
20041123_152322
20041123_152352
20041123_152422
20041123_152452
20041123_152522
20041123_152552
20041123_152622
20041123_152653
20041123_152723



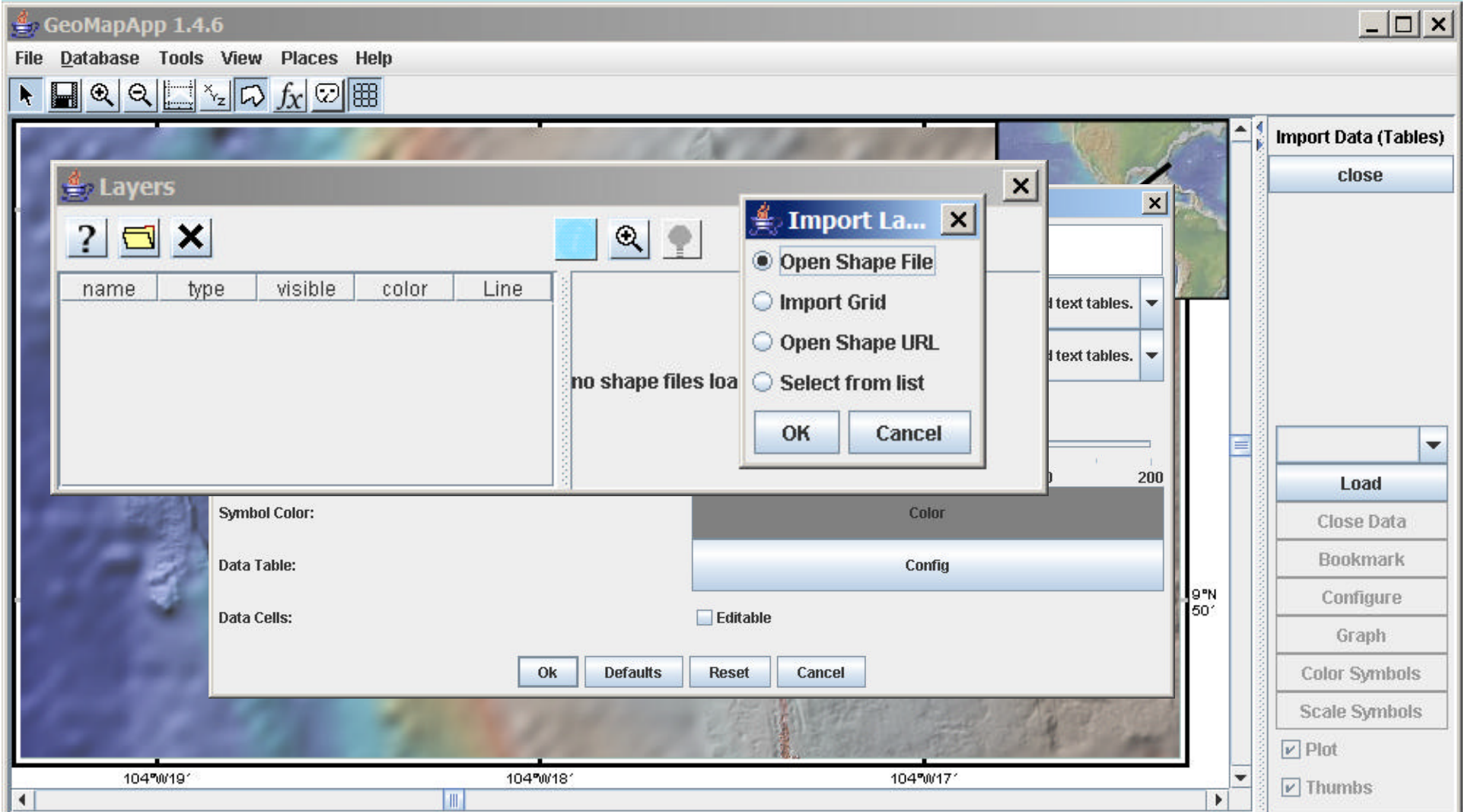
Load Custom Data

The screenshot displays the GeoMapApp 1.4.6 interface. The main window shows a map with a 'Config Untitled' dialog box open. The dialog box has the following fields and options:

- Database Name: Untitled
- Latitude Column: Use the File menu to import Excel spreadsheets and text tables.
- Longitude Column: Use the File menu to import Excel spreadsheets and text tables.
- Data type: Station Track
- Symbol Size Percent: A slider set to 100, with markers at 0, 50, 100, 150, and 200.
- Symbol Color: A color selection area with a 'Color' label.
- Data Table: A dropdown menu with 'Config' selected.
- Data Cells: Editable

Buttons at the bottom of the dialog are 'Ok', 'Defaults', 'Reset', and 'Cancel'. The background map shows a satellite view of a coastal area with coordinates 104°W19', 104°W18', and 104°W17' along the bottom and 9°N 50' on the right. The right sidebar, titled 'Import Data (Tables)', contains a 'close' button and a list of actions: 'Load', 'Close Data', 'Bookmark', 'Configure', 'Graph', 'Color Symbols', and 'Scale Symbols'. At the bottom of the sidebar are checkboxes for 'Plot' and 'Thumbs', both of which are checked.

Load Custom Data



www.marine-geo.org

Questions or comments concerning the MGDS or any of our tools or data sets:

info@marine-geo.org

Questions or comments specifically concerning the Java application GeoMapApp:

info@geomapapp.org