



# UNOLS Ship Scheduling Status

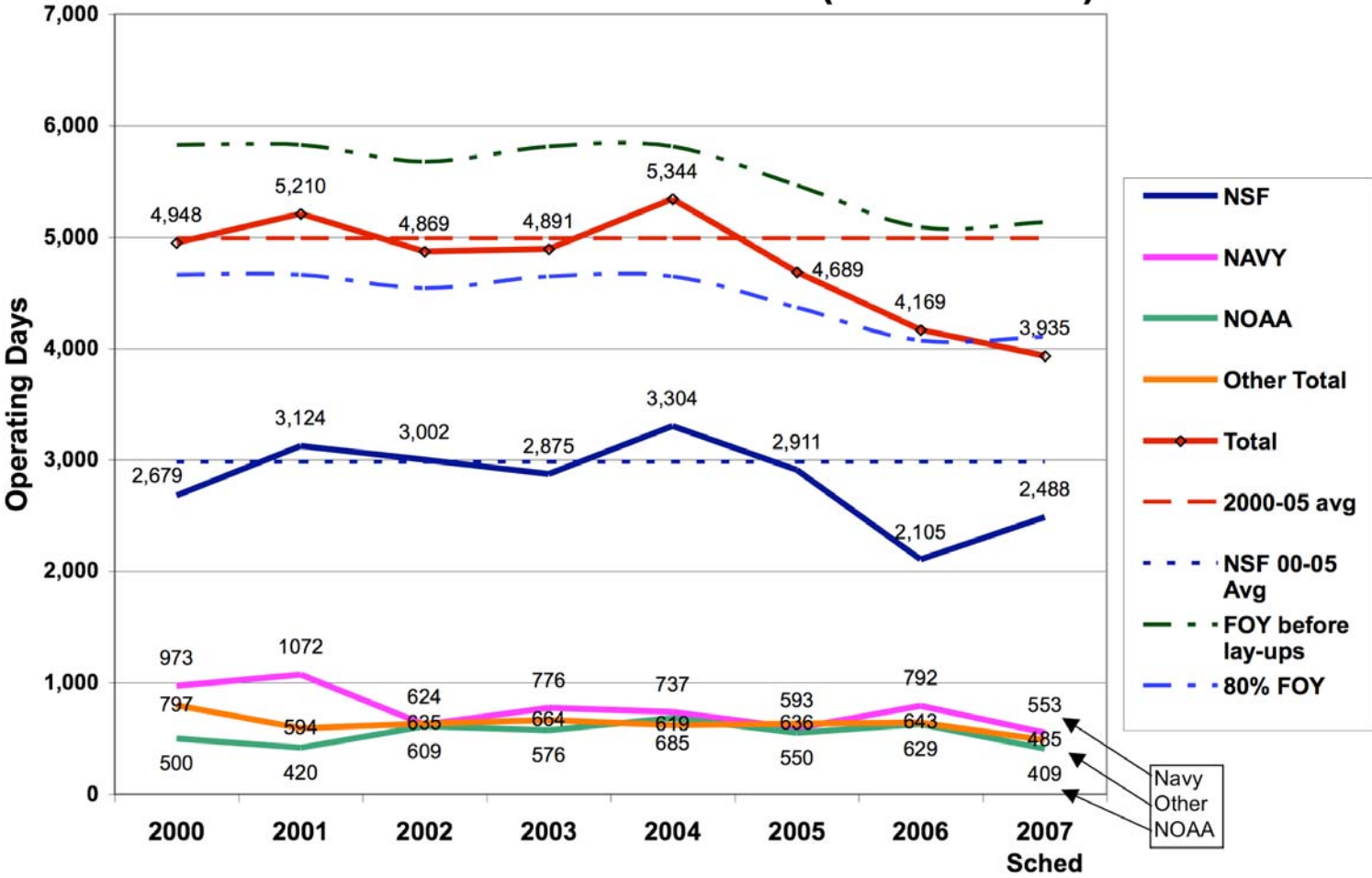
Ship Scheduling Committee Report  
October 3 - 6, 2006

# Overview

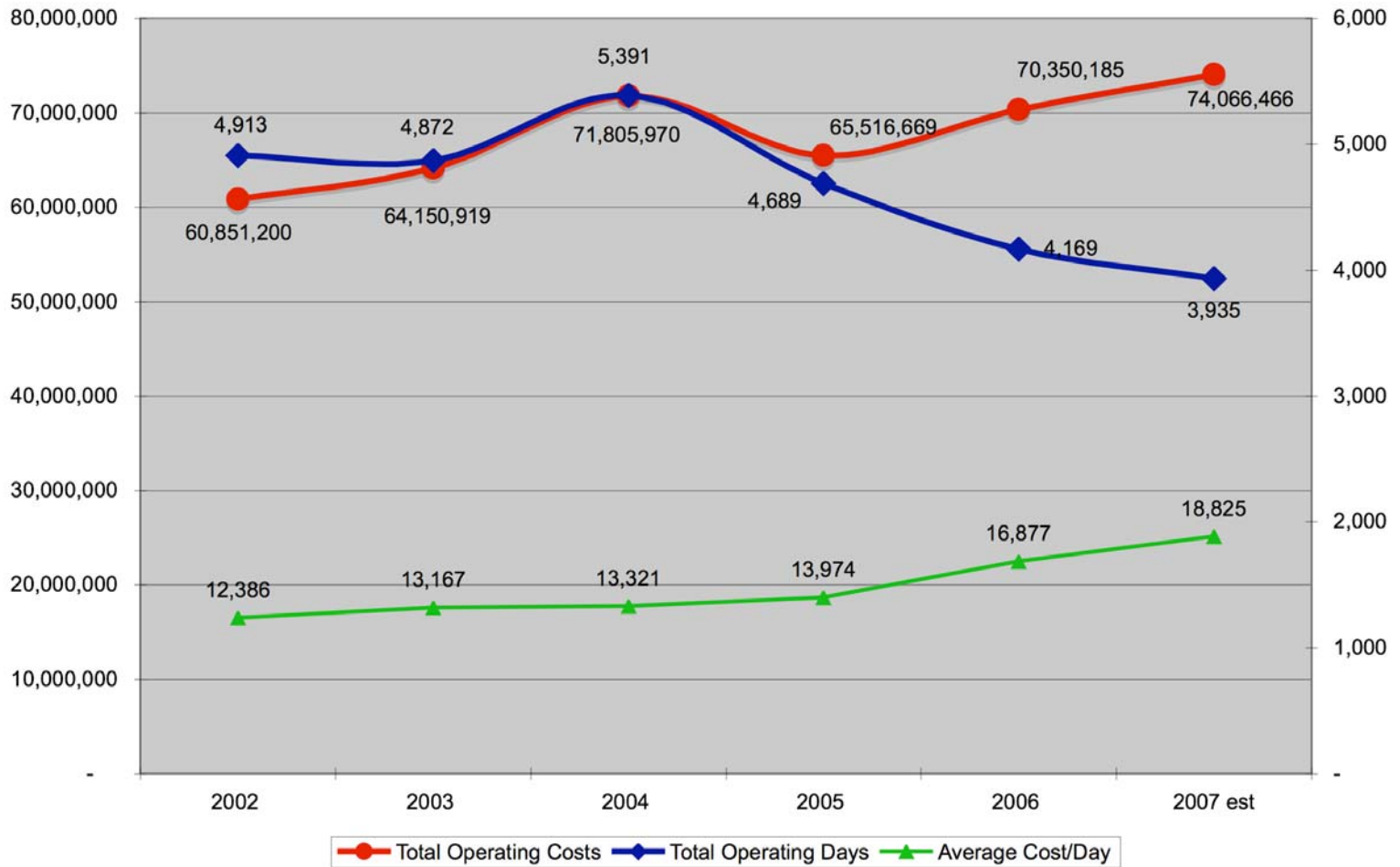
- The national scheduling outlook in early summer was expectedly (exceptionally?) disparaging.
  - Potential Lay-Ups:
    - two large ships
    - one to two regional or intermediate class vessels (one from each coast)
  - target of approximately 5000 ship days\* total usage
    - down by 37% or about 3150 days
- By summer's end
  - total up to 3,935 days
  - still down by about 20%
  - nearly all ships are operating below their target days
  - almost all ships will operate in 2007.

\*The average total UNOLS fleet days from 2000-2005 is 4992 days . 2006 brought the average down to 4874 total fleet days for the six year period.

# UNOLS Fleet Utilization (2000 - 2007)

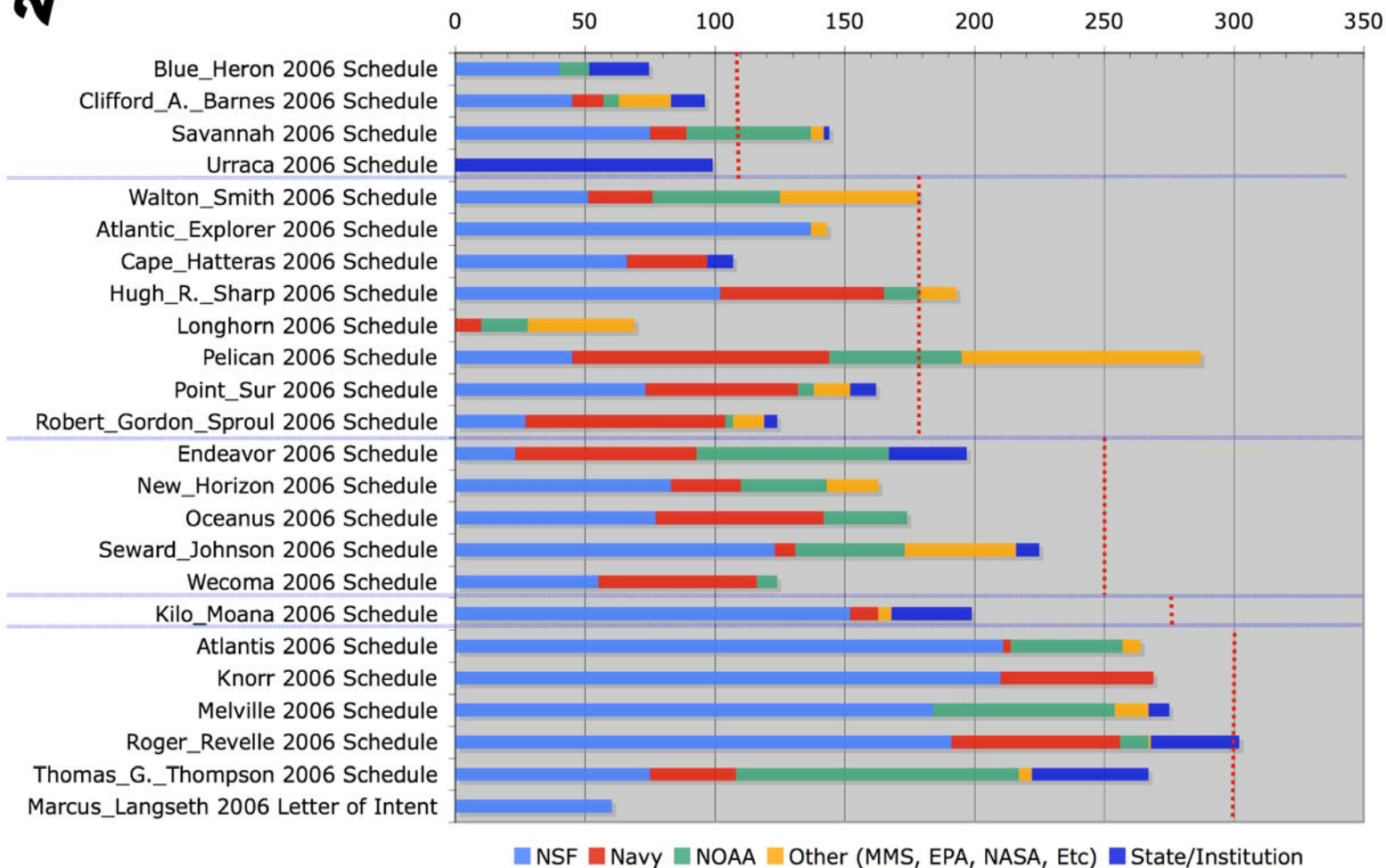


2002 - 2007 UNOLS Fleet Operating Days and Costs



**2006**

**2006 UNOLS Operating Days by Agency**





**2007**

**2007 UNOLS Operating Days by Agency**

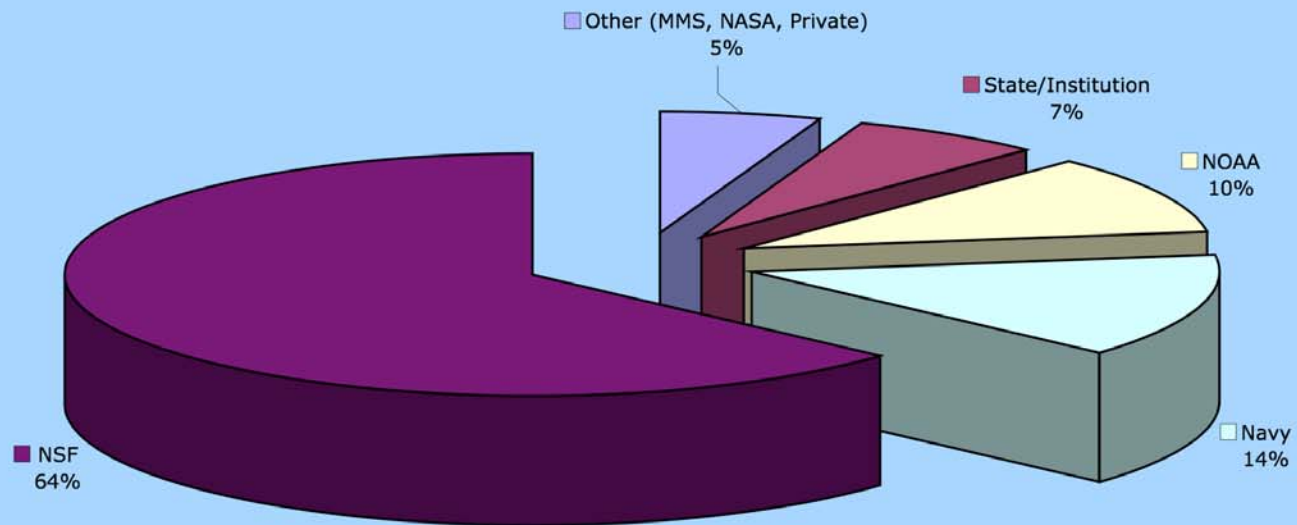


# NSF

- NSF was able to transfer 2008 prepaid BE ship funds into ship ops funds for 2007
  - ability to add several cruises that might have waited till 2008 or were scheduled on foreign vessels
  - anticipate carry-forwards of \$1.5M
  - adds up to an infusion of \$7.1M into OCE ship funds for 2007
  - the anticipated carry forwards can be attributed in part to falling fuel prices
- In order to spend these additional funds, NSF approved a one-time exception for the August 15<sup>th</sup> proposal deadline
  - these proposals will be reviewed in the November panels
  - ship time may be added to the latter half of 2007 schedules from these proposals
- The message to PIs is that they should continue to write proposals for ship time
- NSF will contribute 2,488 days of funded ship time
  - projected total of just over \$50M (OCE, BE, ODP, OPP).

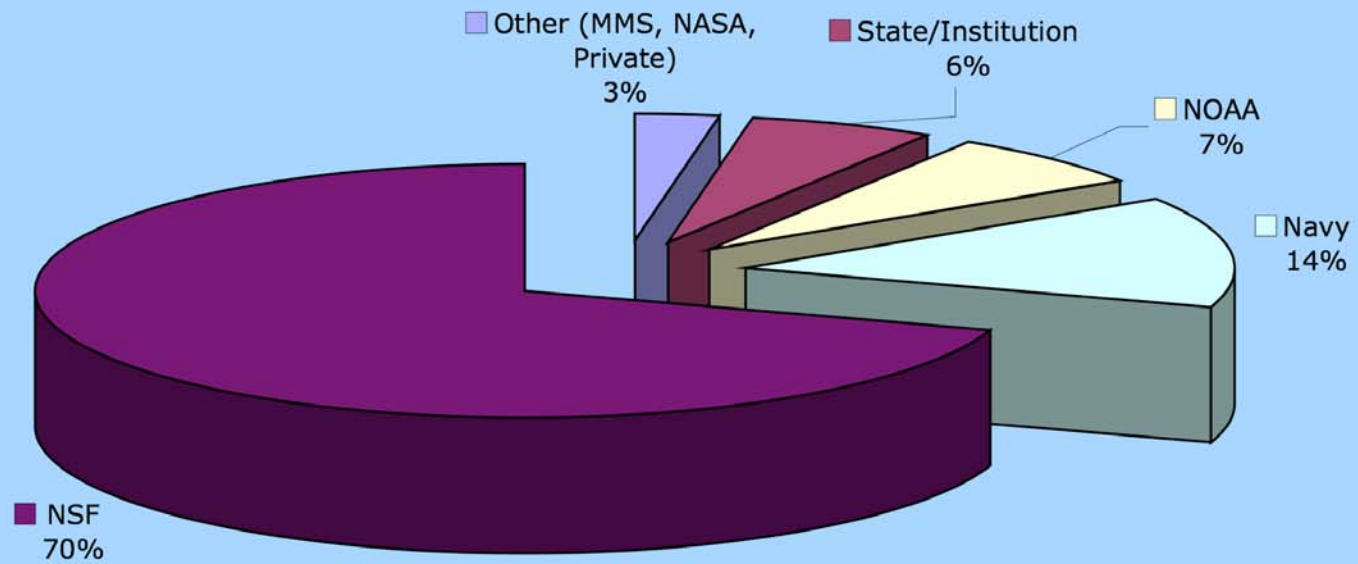
*In order to attract other work, the daily rates of ships must be competitive. The rates are derived from costs divided by the number of allocated ship days.*

## Percent of 2007 Op Days by Agency





## Percent of 2007 Total Ship Operations Costs by Agency



# ONR

- ONR has come up with funds/projects to utilize *Melville*
  - A Phys. Oceanography project slated for 2008 will now have a 2007 component in the Kurshio Extension and the Luzon Straits
- *Melville* out of the scheduling mix for most other Pacific work
- Global/Ocean class vessels may come close to their optimal scheduling ranges without the need to lay-up a Navy AGOR
- ONR will fund approximately \$10 M for ship/tech time
  - mostly intermediates and regional class ships
  - except for the *Melville's* western Pacific work.

# NOAA

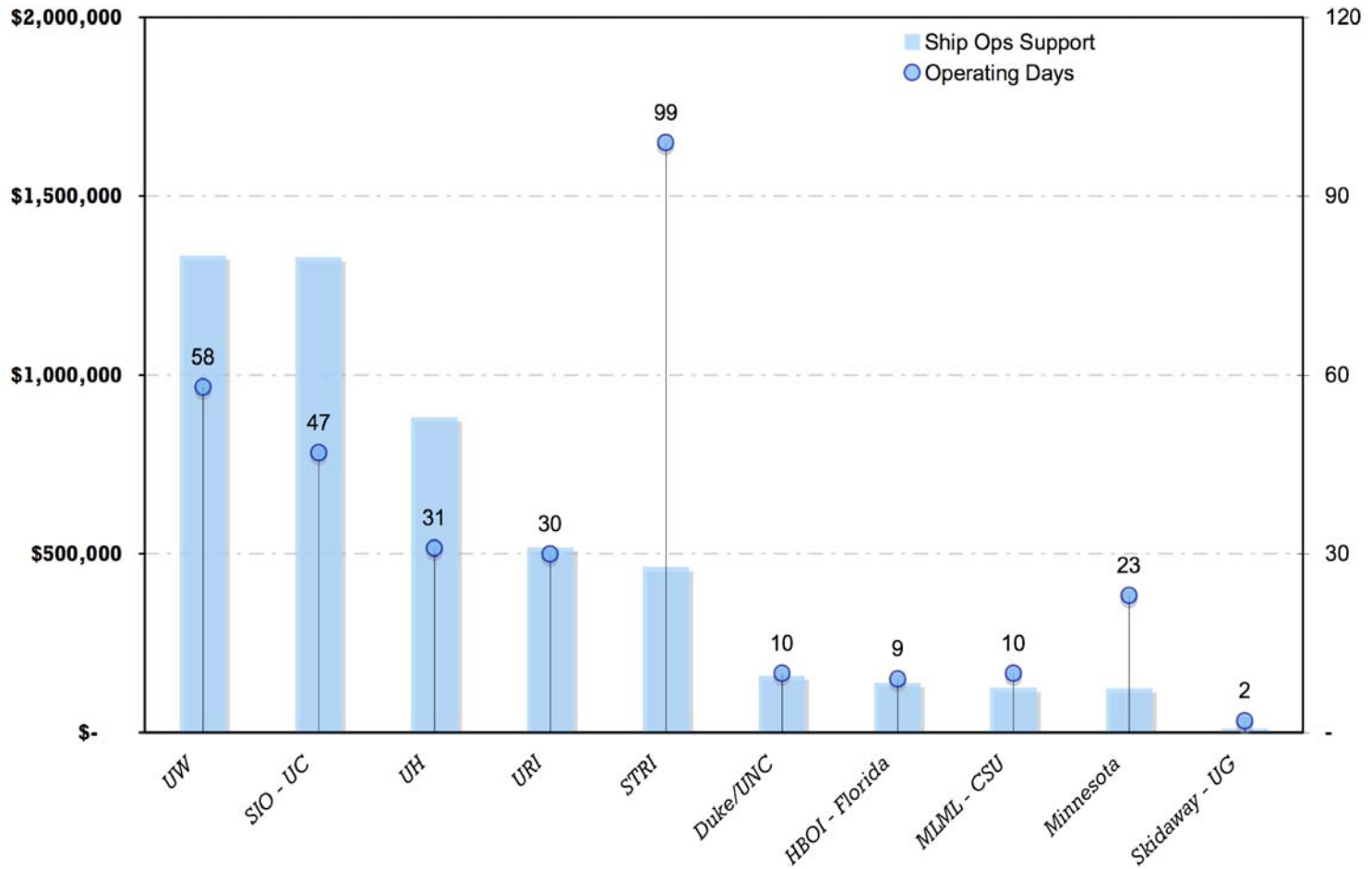
- numbers are down from previous years
  - PMEL/AOML use fairly constant and scheduled
  - OE, NURP, Sea Grant, ECOHAB and DART are all down
- NOAA cruises
  - about 409 days for 2007
  - 630 days scheduled in 2006
- “wait and see” approach to scheduling work in 2007
  - congressional appropriation process forces them to be conservative in their requests to UNOLS
- Most of 2007 DART work will rely on commercial and foreign vessels and two UNOLS cruises (SJ and NH)
- OE only plans to utilize JASON on R/V *Ron Brown*.

# State/Institutional Ship Days

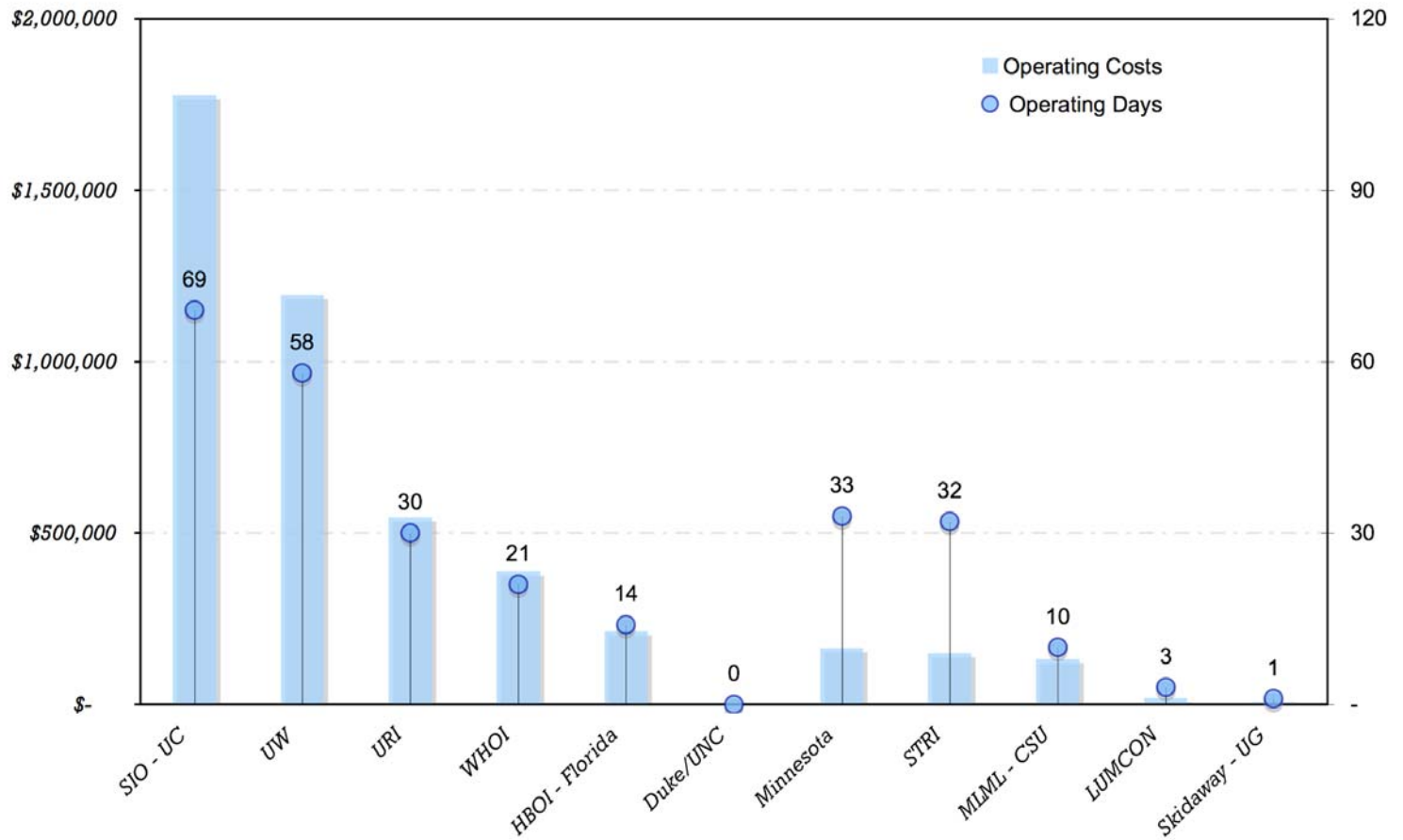
- used to fill in gaps on some ships (ie REVELLE)
- examples of potentially weak schedules now close to target days
  - University of California augmented the *Revelle's* schedule by 68 days
  - University of Washington will fund 45 days for student cruises on *Thompson*
  - WHOI has added approximately 21 days of new institutional/private funds to *Oceanus'* schedule
  - *Seward Johnson* has 14 days of State Funds scheduled and contributes institutional funds towards supplementing the daily rate.
  - *Endeavor* has scheduled 42 days of state days
  - Other ships that have state/institutional funds on their schedules for 2007
    - *Point Sur, Savannah, Barnes, and Urraca*
    - total contributions equal 271 days.
- unquantifiable costs subsidized by operating institutions
  - OSU's non-charge for hull insurance
  - costs sometimes are covered by indirect charges
  - charging 0% for overhead
    - fleet average is a mere 15% for the last ten years

### Institutional & State Support for Ship Operating Days & Costs - 2006

(does not include other institutional support)



### Institutional & State Support for Ship Operating Days & Costs - 2007 (does not include other institutional support)

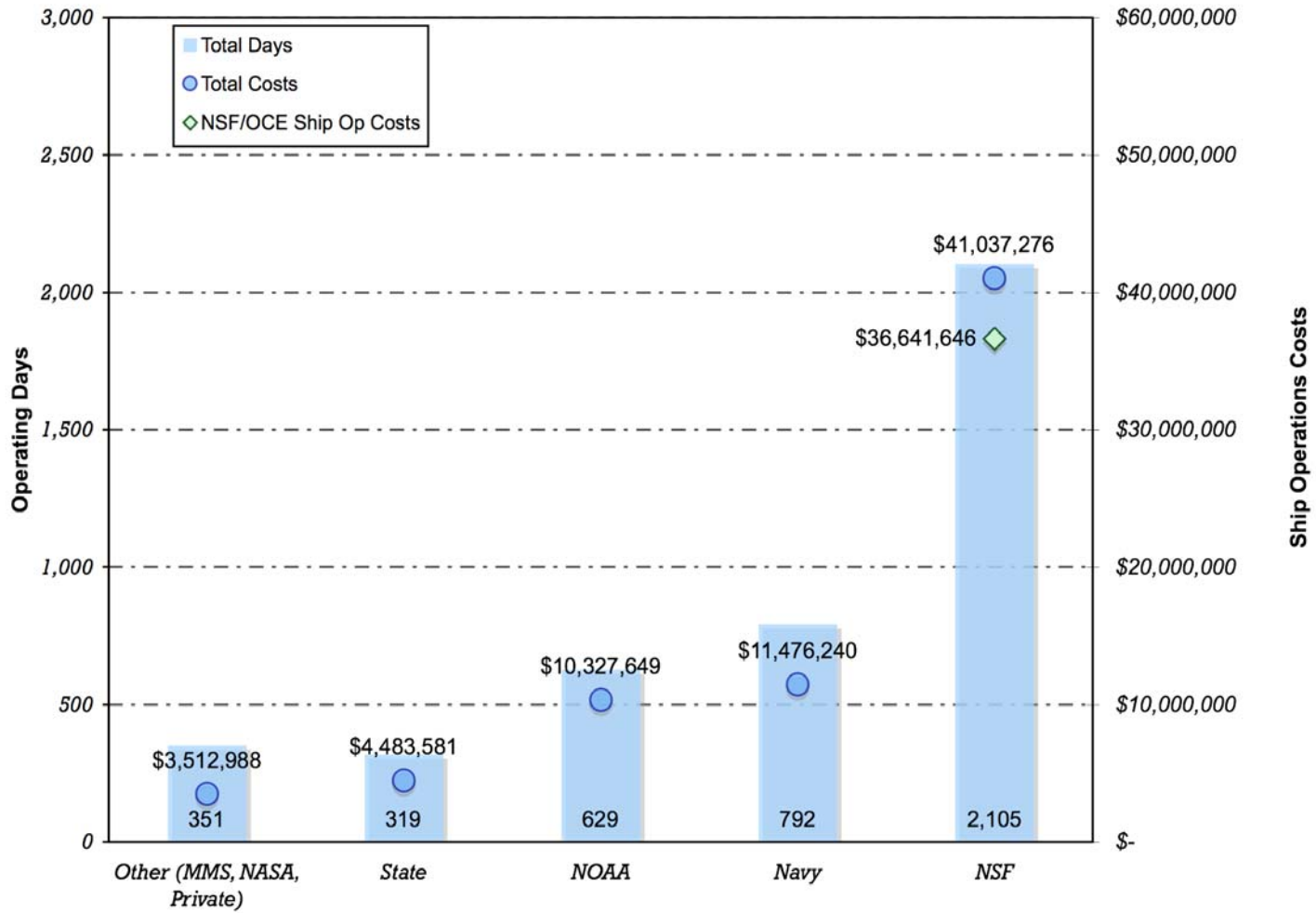




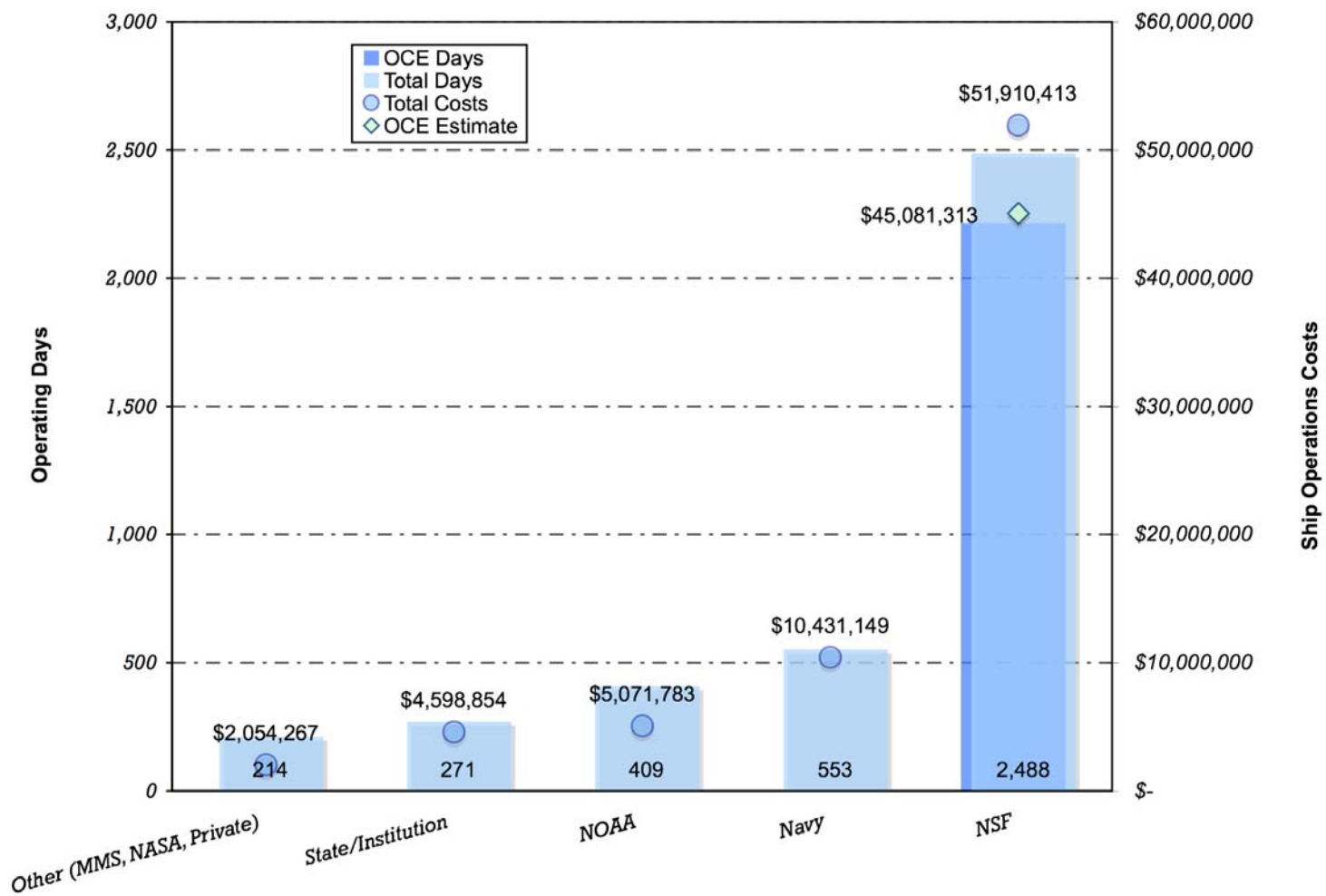
# Foreign & Private Work

- SIO has submitted a proposal to the National Institute of Oceanography in India
  - Proposed work would be about 30 days of 2007 ship time
  - Possible 2008 ship time

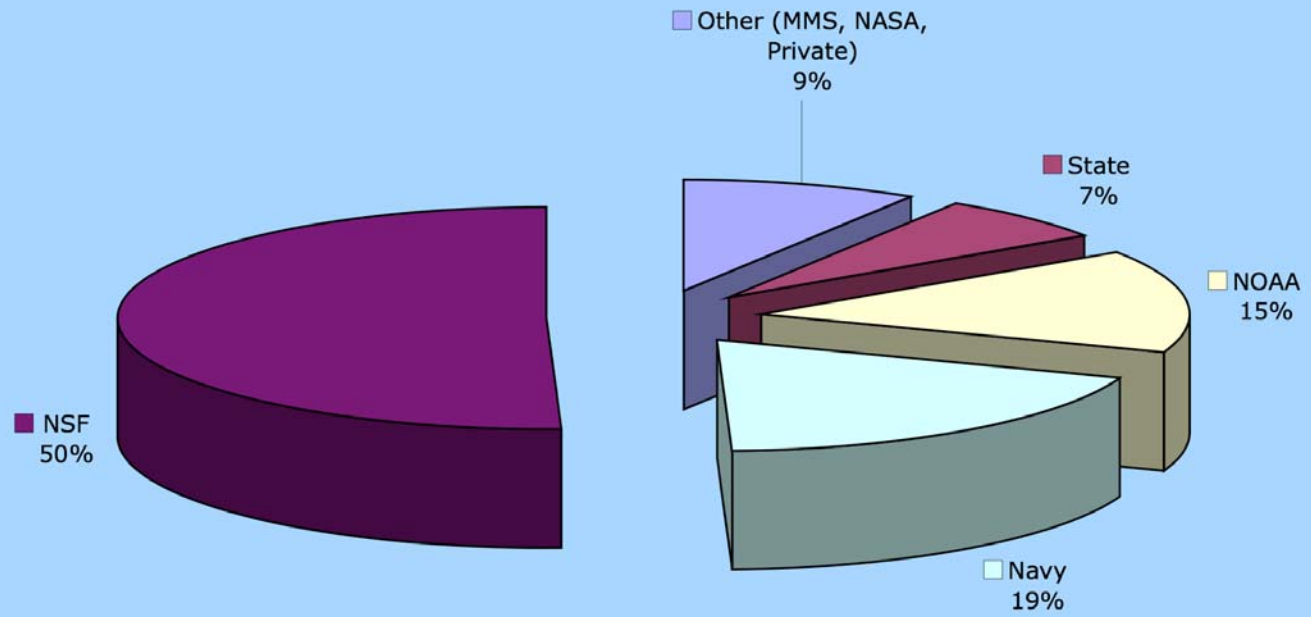
2006 Operating Days and Estimated Cost by Agency



2007 Operating Days and Estimated Cost by Agency



### Percent of 2006 Op Days by Agency



### Percent of 2006 Total Ship Operations Costs by Agency

