



UNOLS Ship Scheduling Status

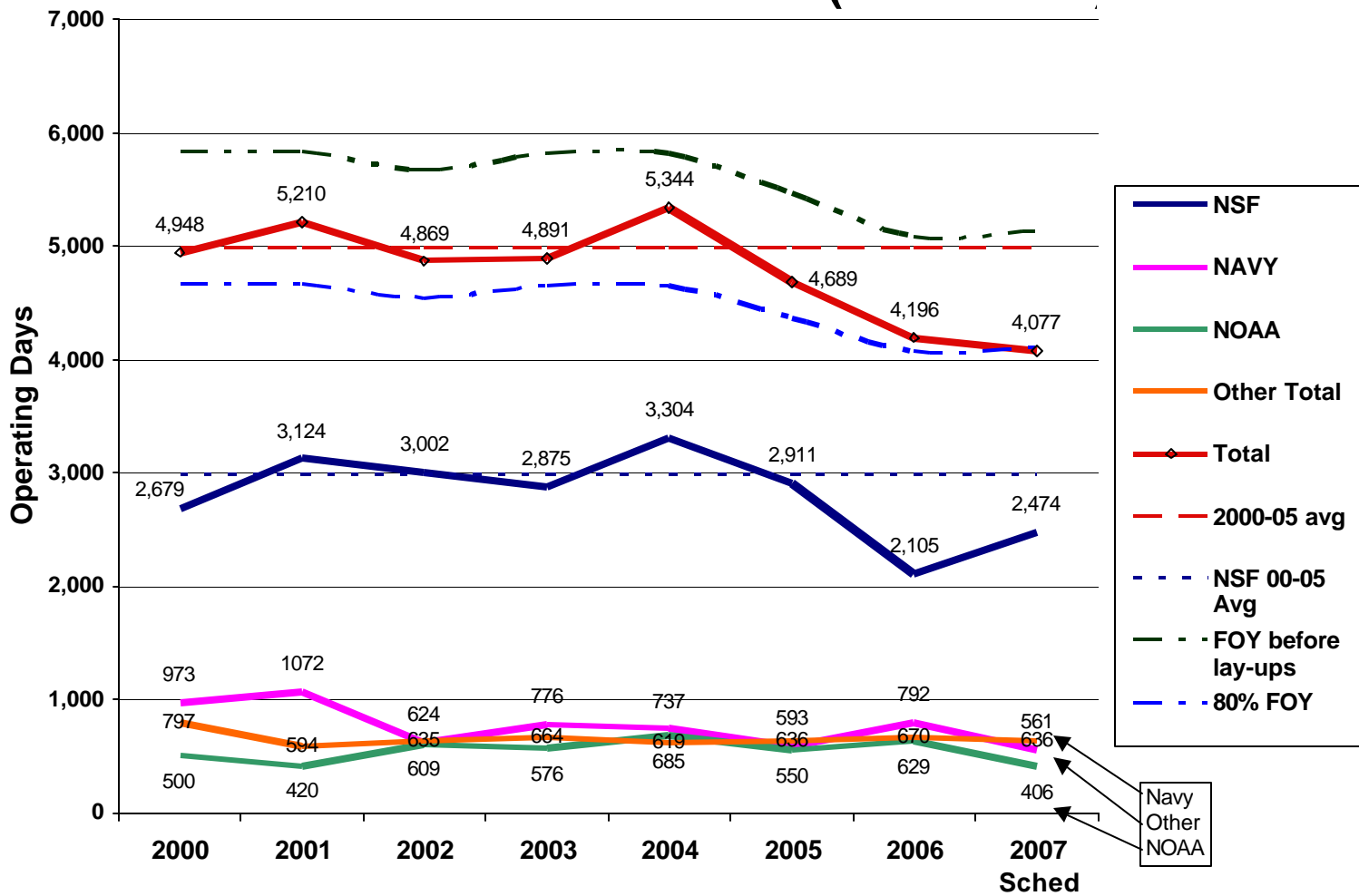
Ship Scheduling Committee Report
October 3 - 6, 2006

Overview

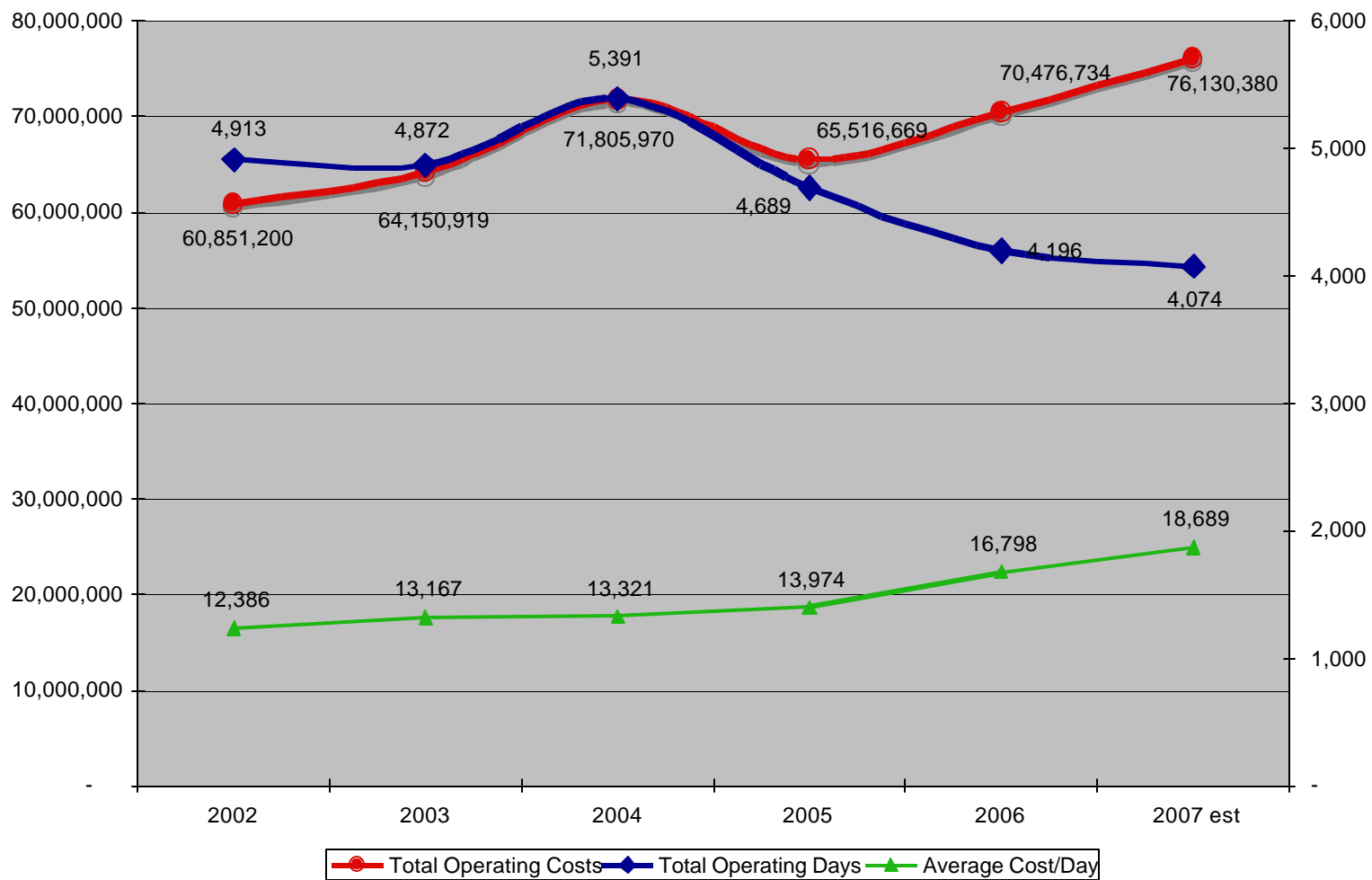
- ✍ The national scheduling outlook in early summer was expectedly (exceptionally?) disparaging.
 - ✍ Potential Lay-Ups:
 - ✍ two large ships
 - ✍ one to two regional or intermediate class vessels (one from each coast)
 - ✍ target of approximately 5000 ship days* total usage
 - ✍ down by 37% or about 3150 days
- ✍ By summer's end
 - ✍ total up to 3,905 days
 - ✍ still down by about 20%
 - ✍ nearly all ships are operating below their target days
 - ✍ almost all ships will operate in 2007.

*The average total UNOLS fleet days from 2000-2005 is 4992 days . 2006 brought the average down to 4874 total fleet days for the six year period.

UNOLS Fleet Utilization (2000 - 2007)

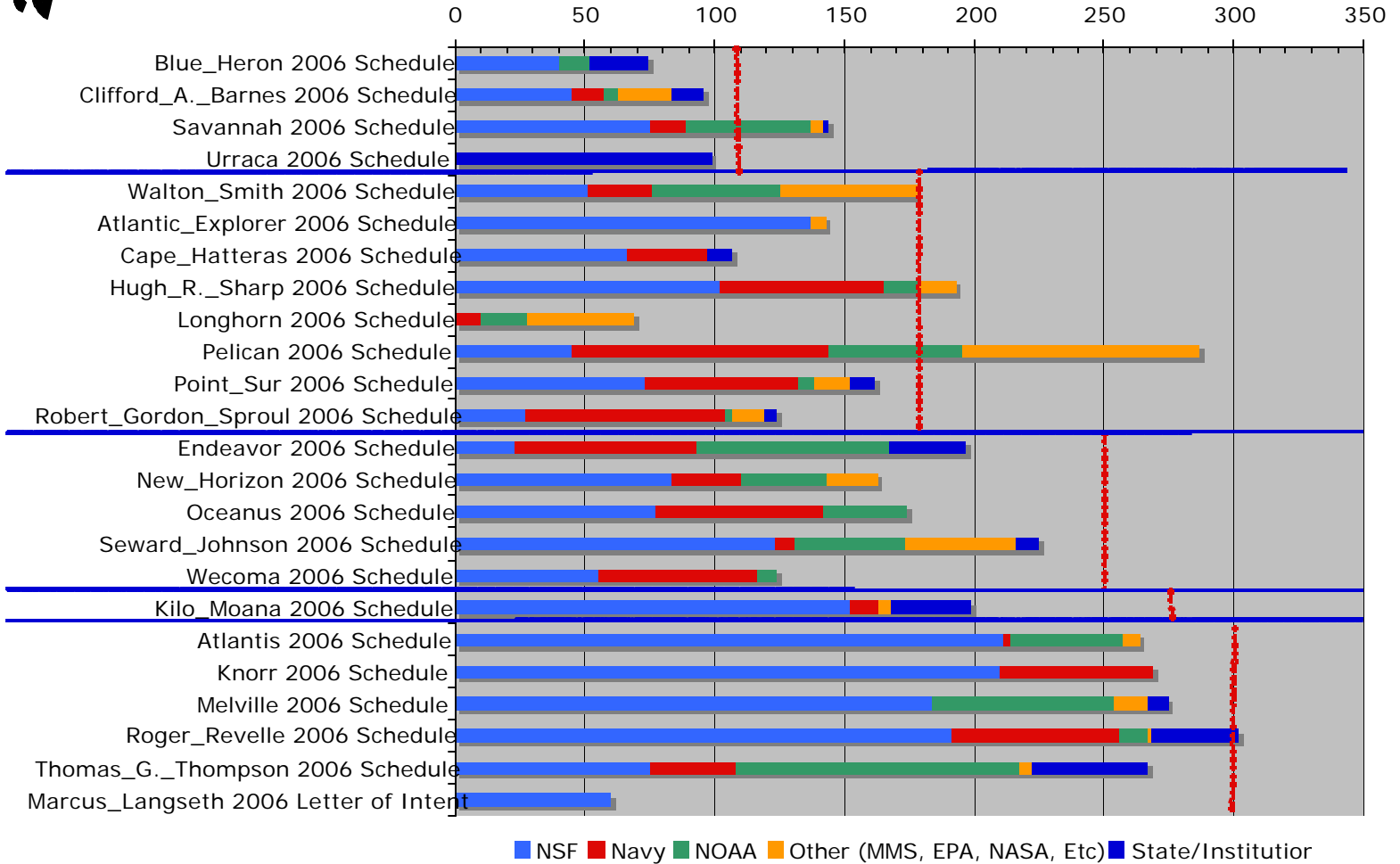


2002 - 2007 UNOLS Fleet Operating Days and Cost



2006

2006 UNOLS Operating Days by Agency



2007

2007 UNOLS Operating Days by Agency

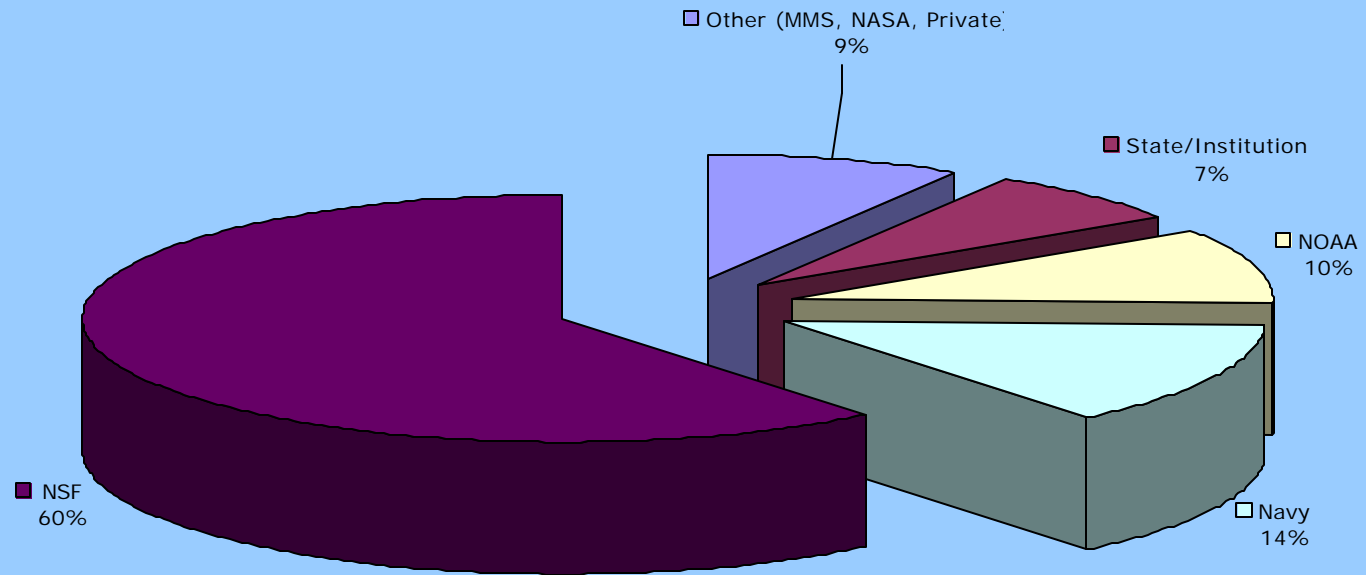


NSF

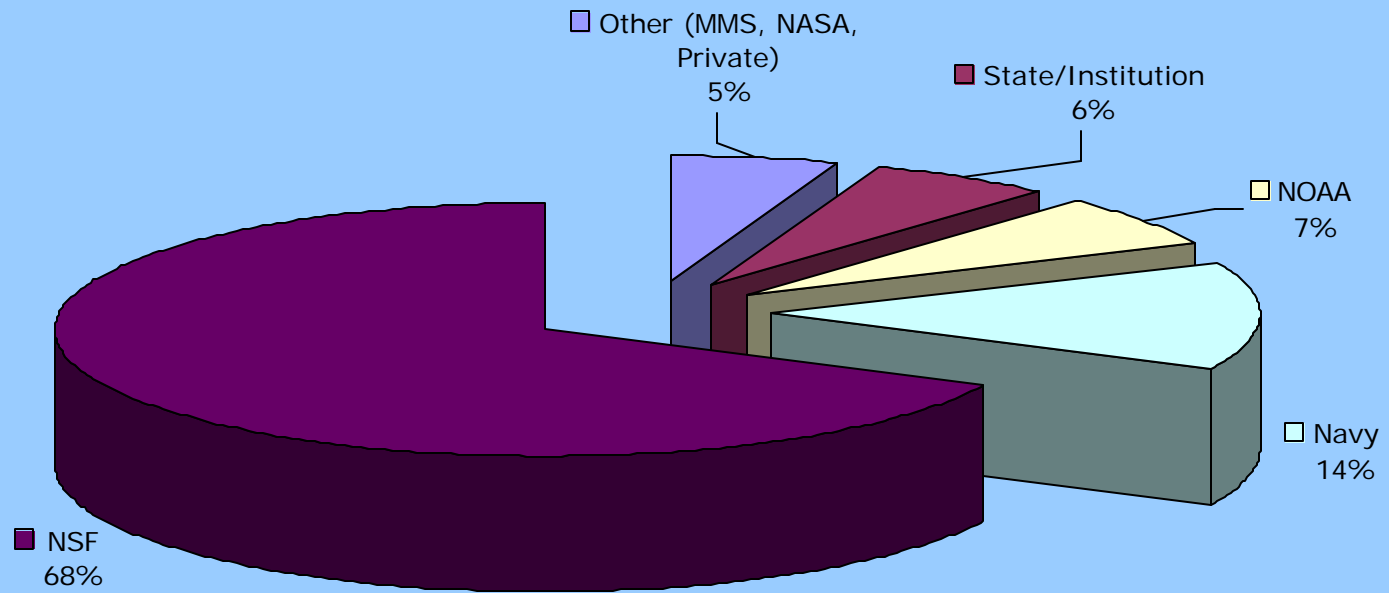
- ✍ NSF was able to transfer 2008 prepaid BE ship funds into ship ops funds for 2007
 - ✍ ability to add several cruises that might have waited till 2008 or were scheduled on foreign vessels
 - ✍ anticipate carry-forwards of \$1.5M
 - ✍ adds up to an infusion of \$6.2M into OCE ship funds for 2007
 - ✍ the anticipated carry forwards can be attributed in part to falling fuel prices
- ✍ In order to spend these additional funds, NSF approved a one-time exception for the August 15th proposal deadline
 - ✍ these proposals will be reviewed in the November panels
 - ✍ ship time may be added to the latter half of 2007 schedules from these proposals
- ✍ The message to PIs is that they should continue to write proposals for ship time
- ✍ NSF will contribute 2,484 days of funded ship time
 - ✍ projected total of just over \$50M (OCE, BE, ODP, OPP).

In order to attract other work, the daily rates of ships must be competitive. The rates are derived from costs divided by the number of allocated ship days.

Percent of 2007 Op Days by Agency



Percent of 2007 Total Ship Operations Costs by Agency



ONR

- ✍ ONR has come up with funds/projects to utilize *Melville*
 - ✍ A Phys. Oceanography project slated for 2008 will now have a 2007 component in the Kurshio Extension and the Luzon Straits
- ✍ *Melville* out of the scheduling mix for most other Pacific work
- ✍ Global/Ocean class vessels may come close to their optimal scheduling ranges without the need to lay-up a Navy AGOR
- ✍ ONR will fund approximately \$10 M for ship/tech time
 - ✍ mostly intermediates and regional class ships
 - ✍ except for the *Melville's* western Pacific work.

NOAA

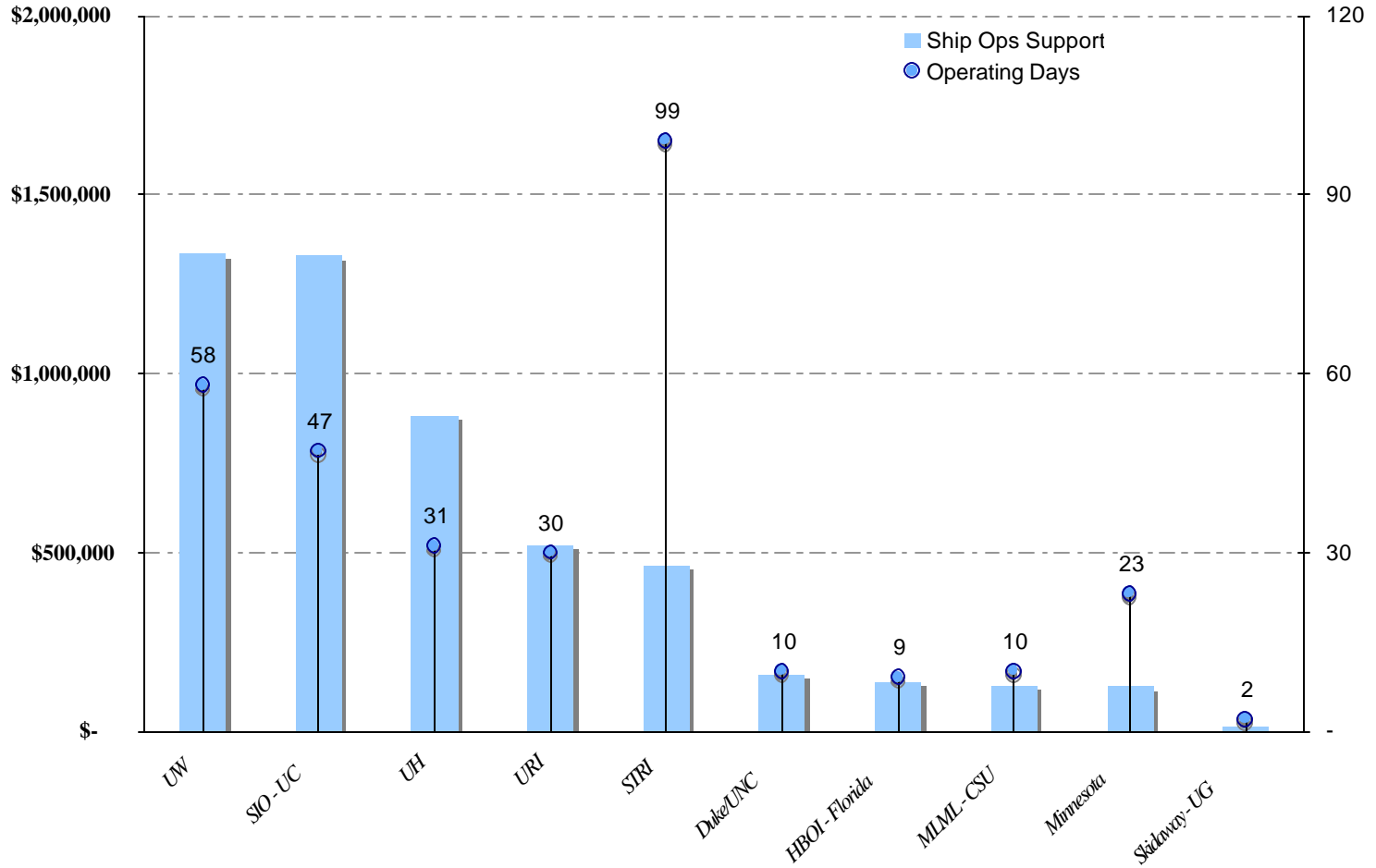
- ✍ numbers are down from previous years
 - ✍ PMEL/AOML use fairly constant and scheduled
 - ✍ OE, NURP, Sea Grant, ECOHAB and DART are all down
- ✍ NOAA cruises
 - ✍ about 344 days for 2007
 - ✍ 630 days scheduled in 2006
- ✍ “wait and see” approach to scheduling work in 2007
 - ✍ congressional appropriation process forces them to be conservative in their requests to UNOLS
- ✍ Most of 2007 DART work will rely on commercial and foreign vessels and two UNOLS cruises (SJ and NH)
- ✍ OE only plans to utilize JASON on R/V *Ron Brown*.

State/Institutional Ship Days

- ✍ used to fill in gaps on some ships (ie REVELLE)
- ✍ examples of potentially weak schedules now close to target days
 - ✍ University of California augmented the *Revelle's* schedule by 68 days
 - ✍ University of Washington will fund 45 days for student cruises on *Thompson*
 - ✍ WHOI has added approximately 21 days of new institutional/private funds to *Oceanus'* schedule
 - ✍ *Seward Johnson* has 14 days of State Funds scheduled and contributes institutional funds towards supplementing the daily rate.
 - ✍ *Endeavor* has scheduled 42 days of state days
 - ✍ Other ships that have state/institutional funds on their schedules for 2007
 - ✍ *Cape Hatteras, Pt. Sur, Savannah, Barnes, and Urraca*
 - ✍ total contributions equal 347 days.
- ✍ unquantifiable costs subsidized by operating institutions
 - ✍ OSU's non-charge for hull insurance
 - ✍ costs sometimes are covered by indirect charges
 - ✍ charging 0% for overhead
 - ✍ fleet average is a mere 15% for the last ten years

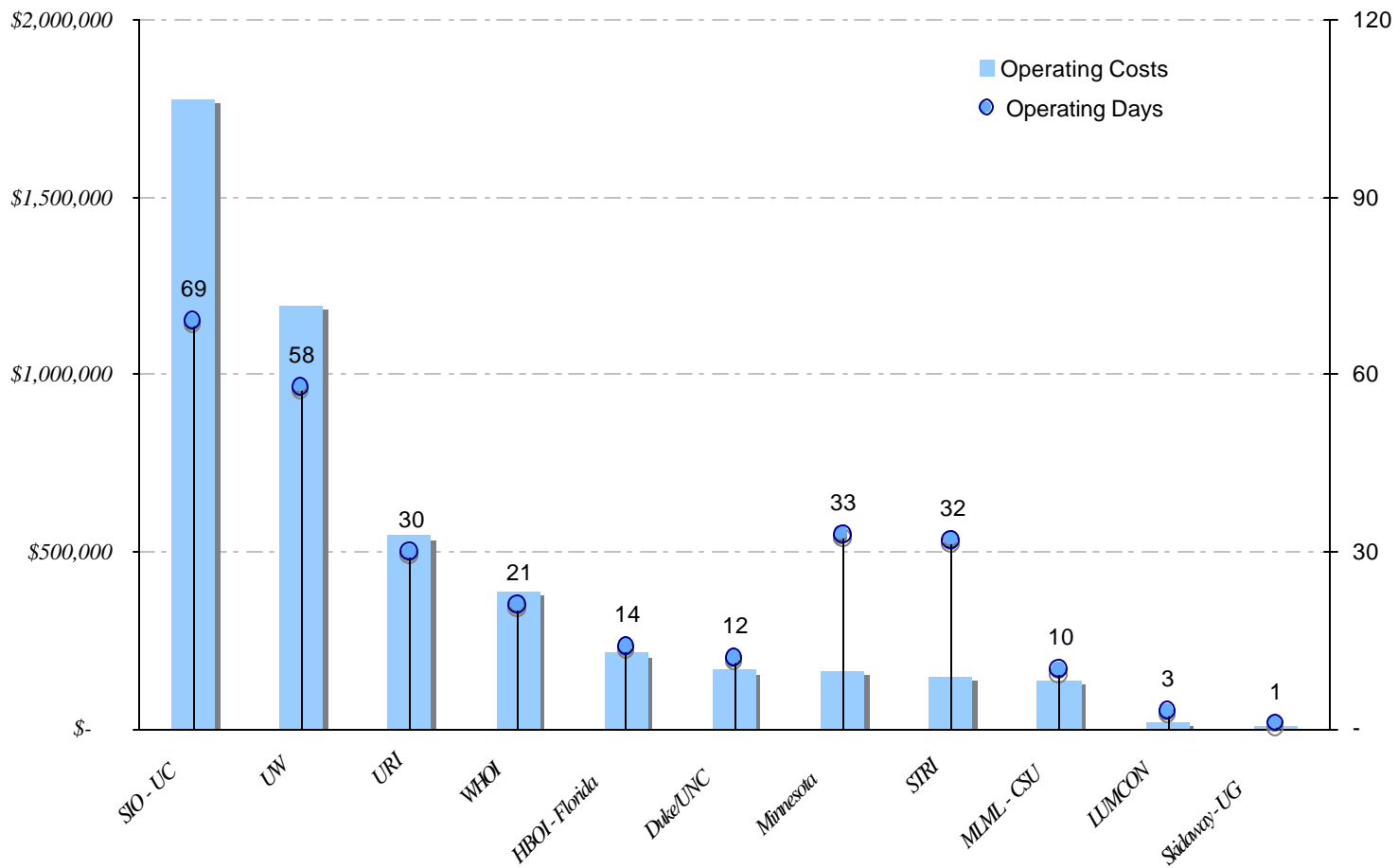
Institutional & State Support for Ship Operating Days & Costs - 20

(does not include other institutional support)



Institutional & State Support for Ship Operating Days & Costs - 20

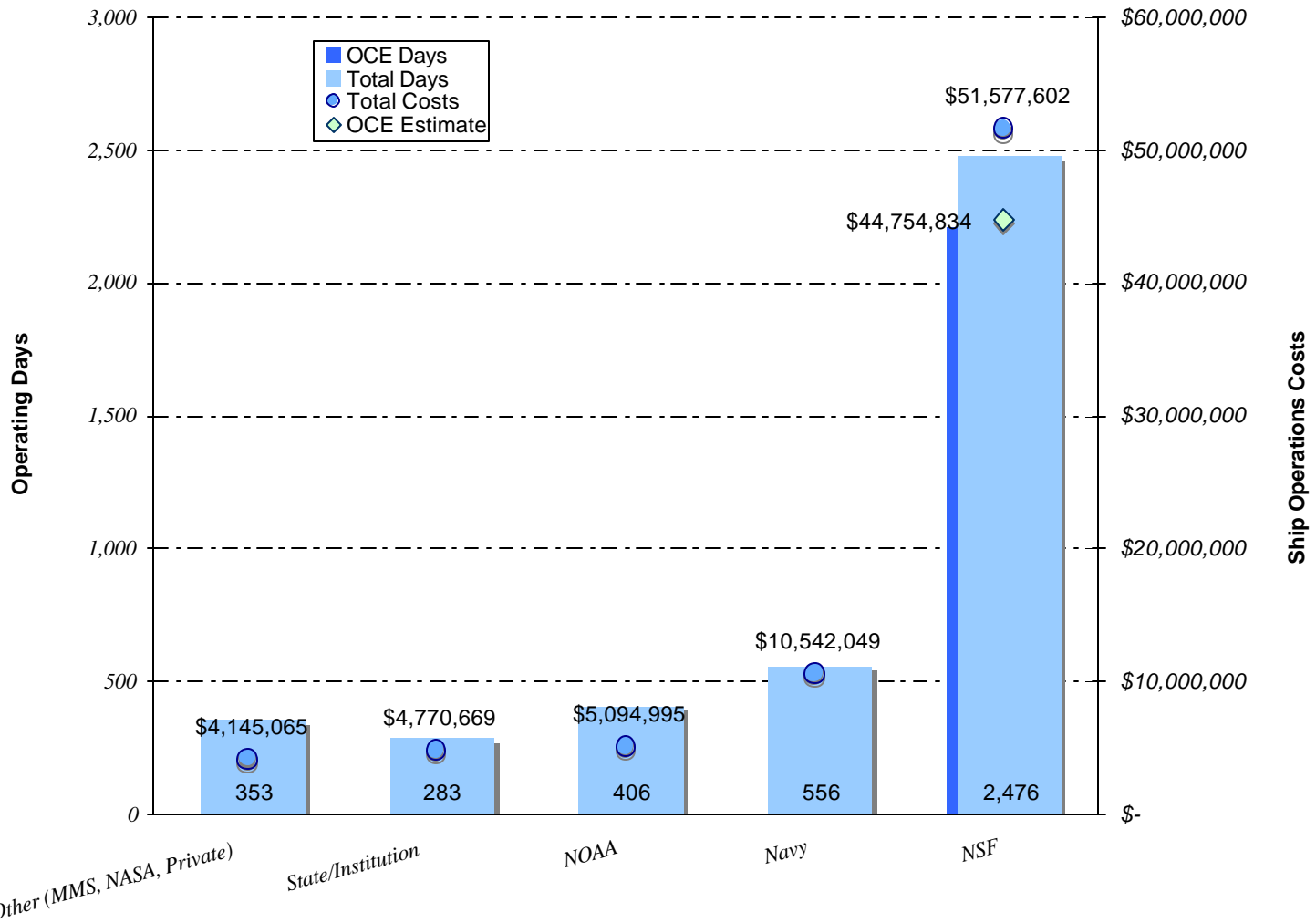
(does not include other institutional support)



Foreign & Private Work

- ✍ SIO has submitted a proposal to the National Institute of Oceanography in India
 - ✍ Proposed work would be about 30 days of 2007 ship time
 - ✍ Possible 2008 ship time
- ✍ GreenSea Venture Inc. and Novel Research
 - ✍ Utilize R/Vs *Cape Hatteras* and *Pt. Sur* off Galapagos for “IronEx” work
 - ✍ 42 days science for each plus associated transits.
 - ✍ Probably a long shot

2007 Operating Days and Estimated Cost by Agency



2006 Operating Days and Estimated Cost by Agent

