

Scheduling & Utilization

SSC report to the
UNOLS Council
March 14-15, 2006

September 2005

- ◆ 2006 Scheduling review via phone/web conference
 - ◆ Recommendations were made by program managers in order to move toward viable 2006 schedules.
- ◆ Questions that remained unanswered:
 - ◆ NOAA's ability to fund cruises as scheduled due to rising daily rates due to escalating fuel prices and uncertainties within NOAA in their calculations of ship/ROV costs.
 - ◆ ONR Plus-up appropriation?

December 2005

- ◆ Schedulers were advised of NOAA budget cuts based on congressional appropriations. Appropriate revisions were made to affected schedules.
- ◆ Recommendation was made to hold a special scheduling meeting to reassess large ship schedules and intermediates impacted by NOAA budget cuts.

January 2006

- ◆ Held special scheduling meeting at SIO, attended by agency program managers and large ship schedulers.
 - ◆ First order of business was to review all the 2006 schedules, identify changes, problems and make adjustments as needed.
 - ◆ NSF-Identified funded programs to be used to construct 2007 Letters of Intent.
 - ◆ Nearly all of the 2007 NSF budget is allocated on the currently funded OCE programs, therefore the prediction is that very few programs will be funded to go to sea in 2007 from decisions made at the May 2006 panels.
 - ◆ ONR- Budget outlook for 2007 will be similar to 2006. [ONR plus-up should be ready for distribution by April] STRs for 2007 Navy work are encouraged.
 - ◆ NOAA-PMEL, OE and DART shared information on priority cruises for 2007 but no commitments were made, as budget is largely unknown. STRs are encouraged.

Plans & Recommendations

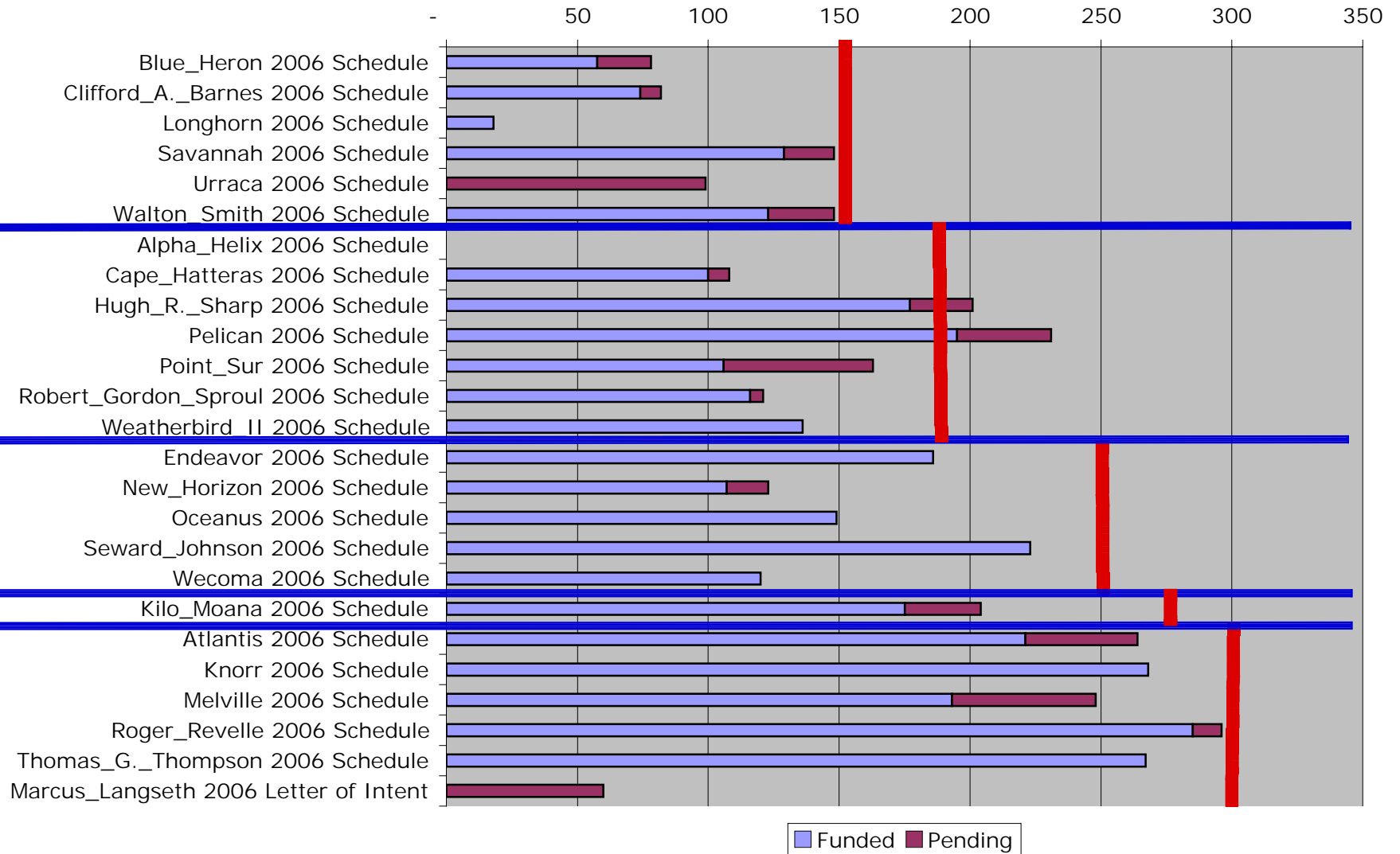
◆ Plans

- ◆ At this time, we are requesting that schedulers post their 2007 Letters of Intent, this will assist all agencies to see projected global positions especially for the large ships, and hopefully allow for an infusion of additional ship days by NOAA and ONR and other agencies/institutions. State funds will also add ship days.
- ◆ We are planning scheduling meetings via phone/web conferences to sort out double bookings and resolve potential problems beginning in late spring and throughout the summer.
- ◆ The Ship Scheduling meeting normally held in July at NSF in Arlington, VA will be deferred to September.

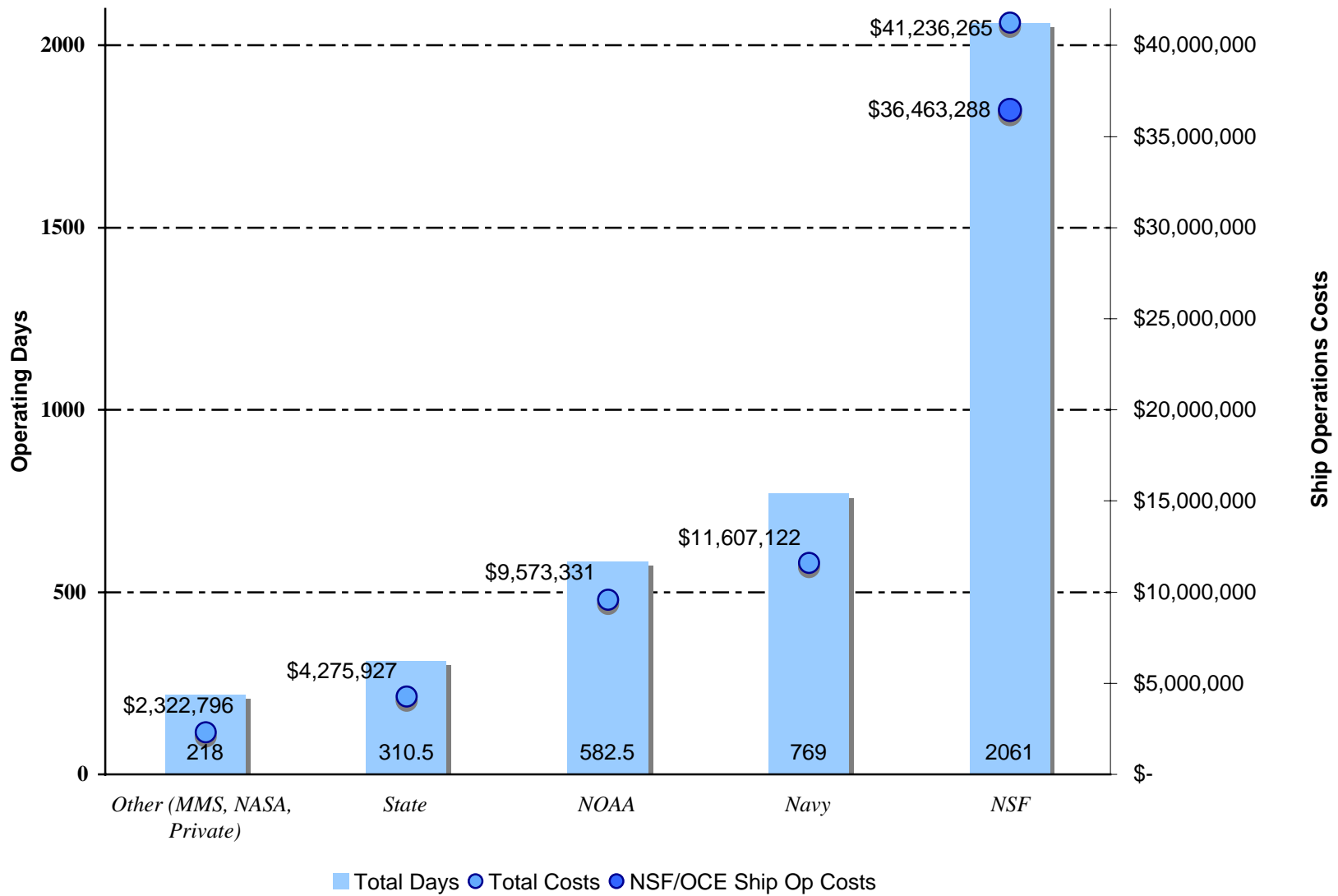
◆ Recommendation

- ◆ With the prospect of continued light schedules we request that the UNOLS Council provide recommendations for a rotating lay-up schedule. Planning for this possibility should start immediately.

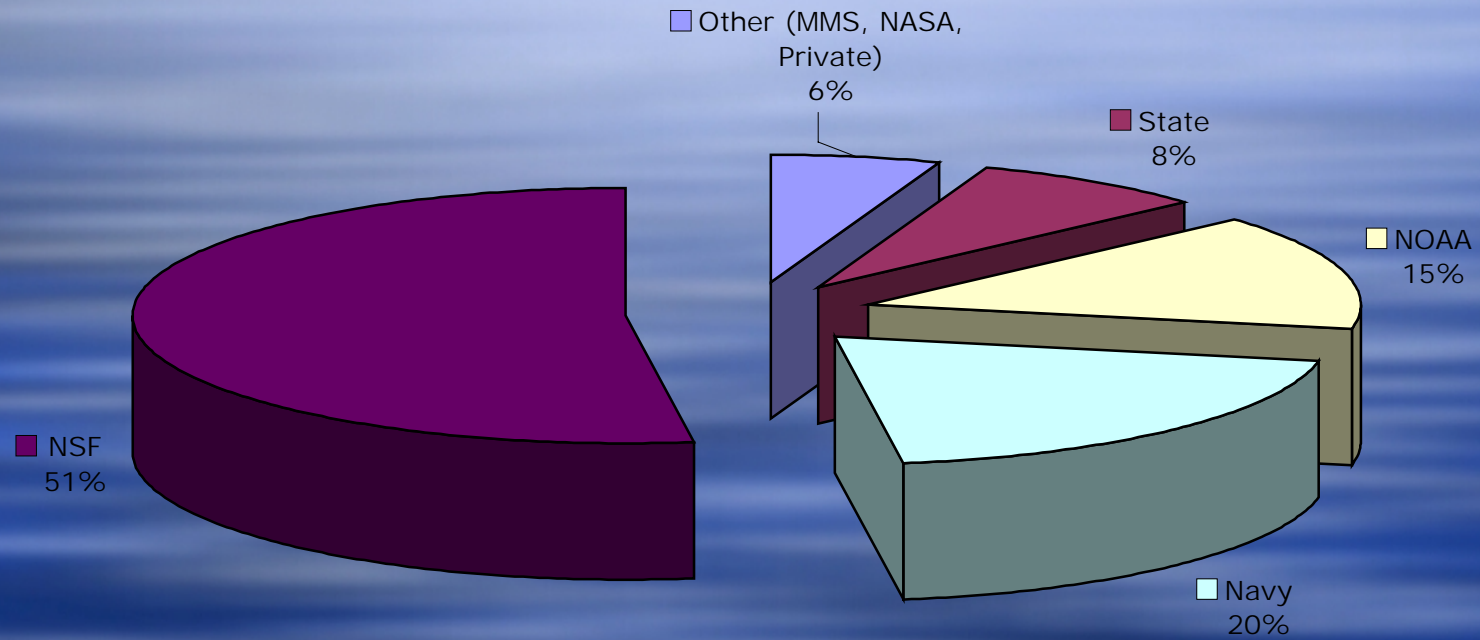
2006 UNOLS Operating Days



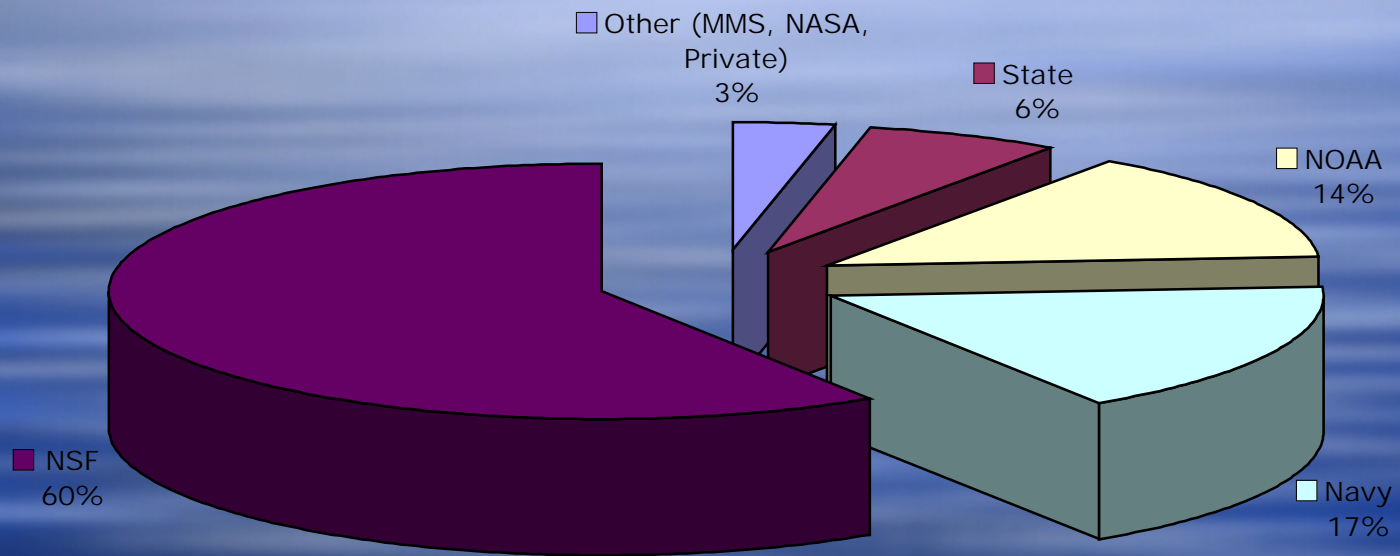
2006 Operating Days and Estimated Cost by Agency



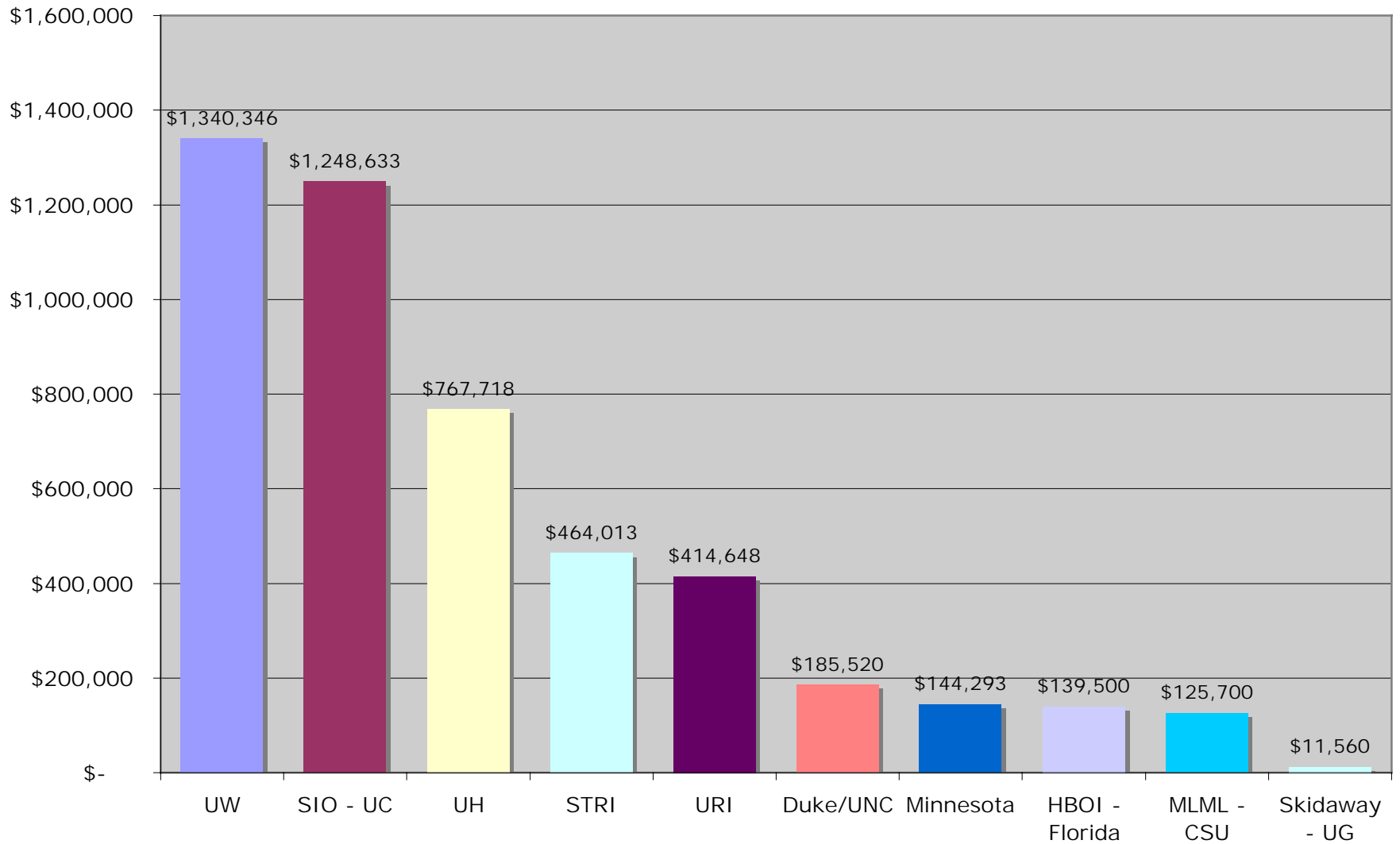
Percent of 2006 Op Days by Agency



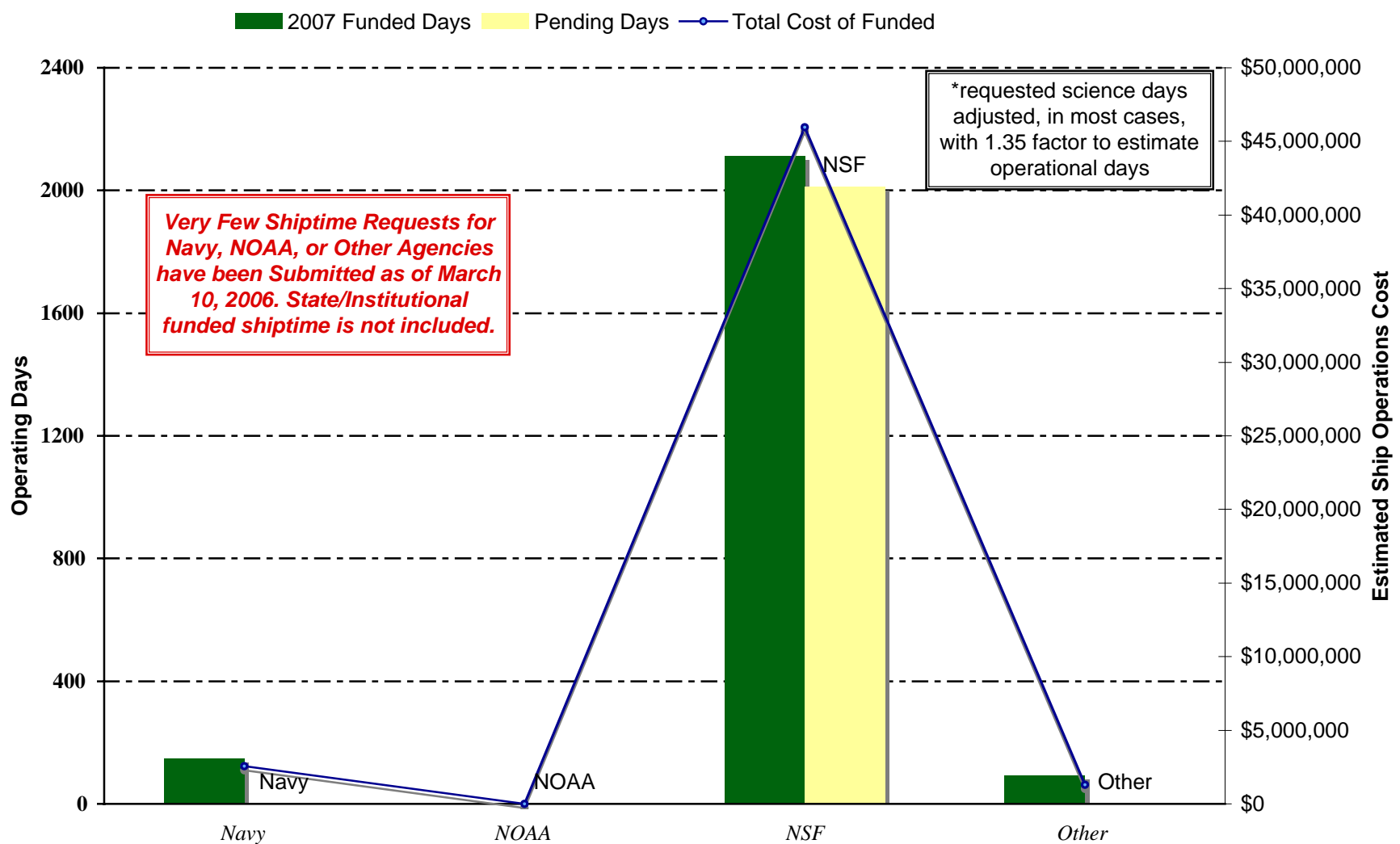
Percent of 2006 Total Ship Operations Costs by Agency



2006 Institution/State Support (\$)



2007 Funded and Pending Requests *

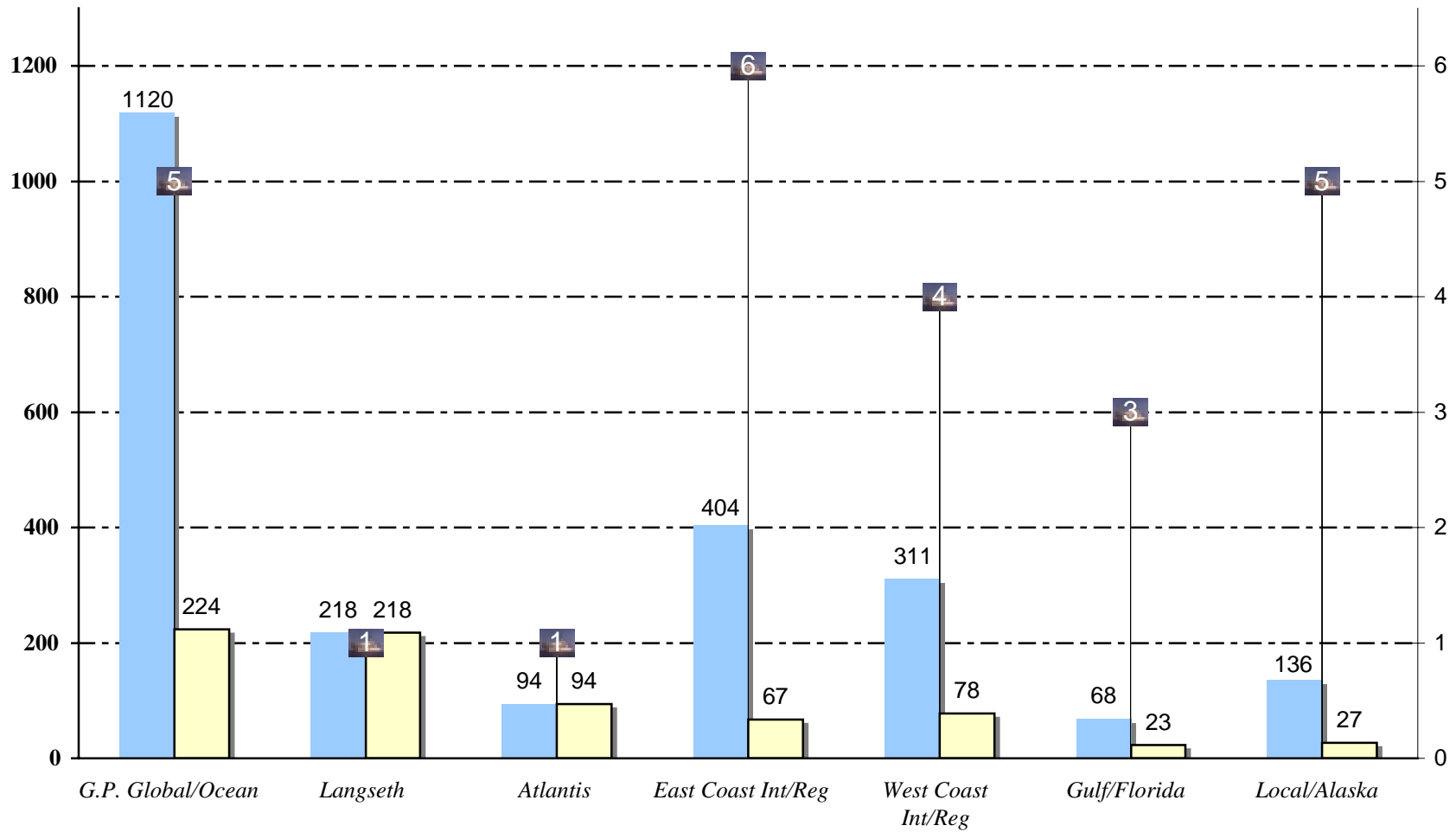


Very Few Shiptime Requests for Navy, NOAA, or Other Agencies have been Submitted as of March 10, 2006. State/Institutional funded shiptime is not included.

*requested science days adjusted, in most cases, with 1.35 factor to estimate operational days

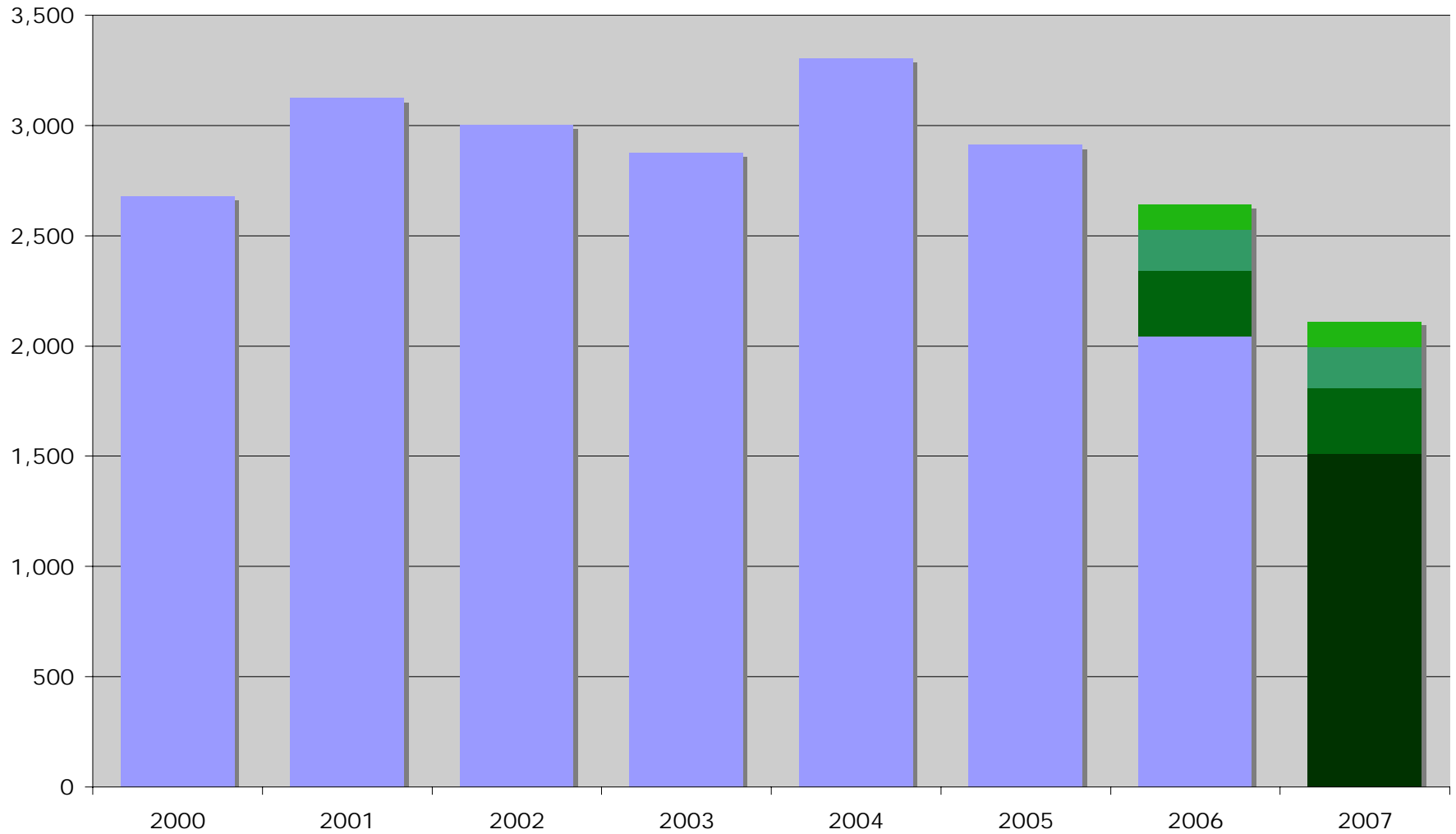
2007 Shiptime Requests per Vessel Class/Region

2007 Funded Days Per Ship # ships



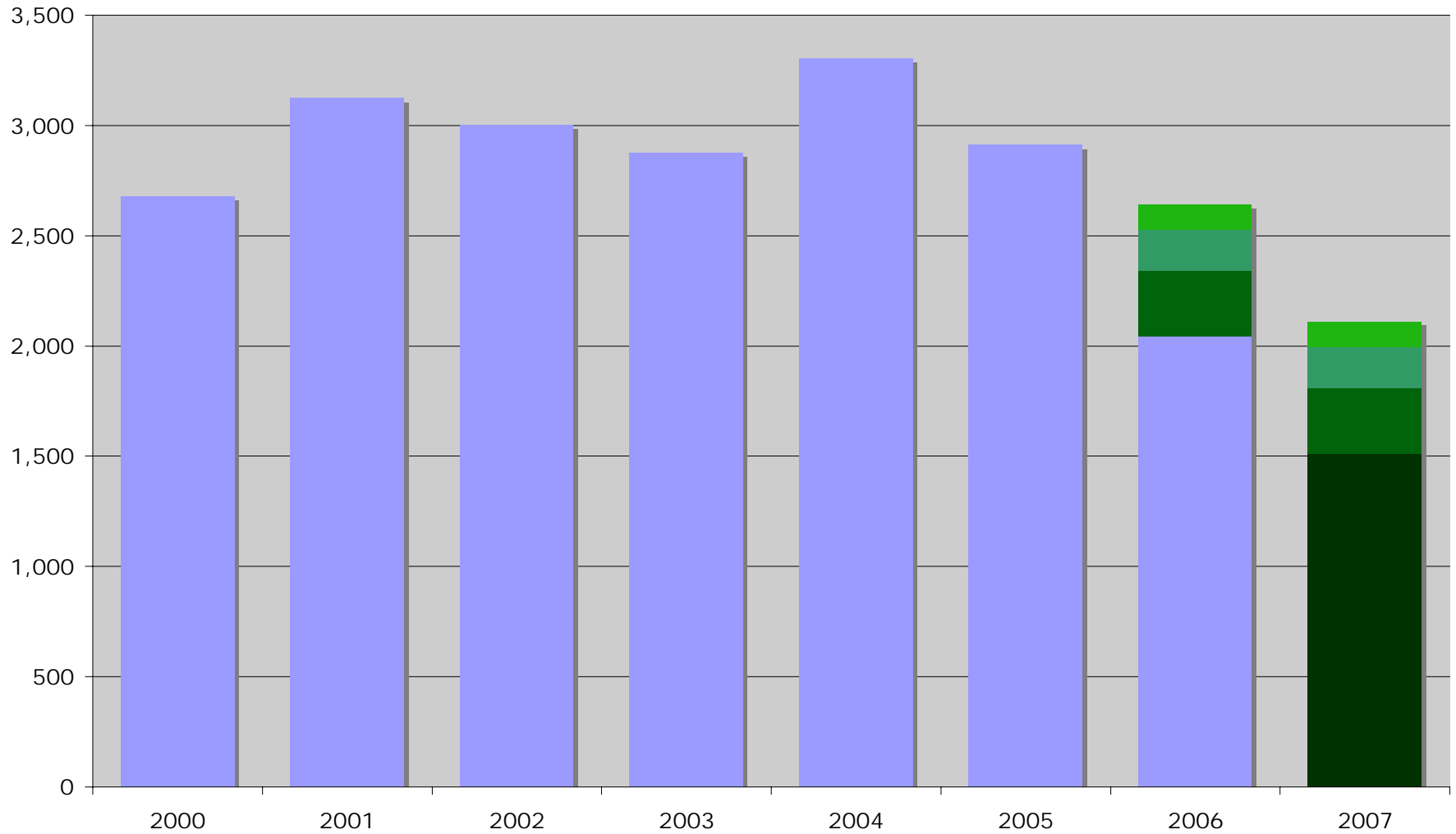
Funded and Deferred NSF Requests

■ Scheduled ■ 2007 Request ■ Deferred 2006 Request ■ 2005 STR ■ 2004 STR

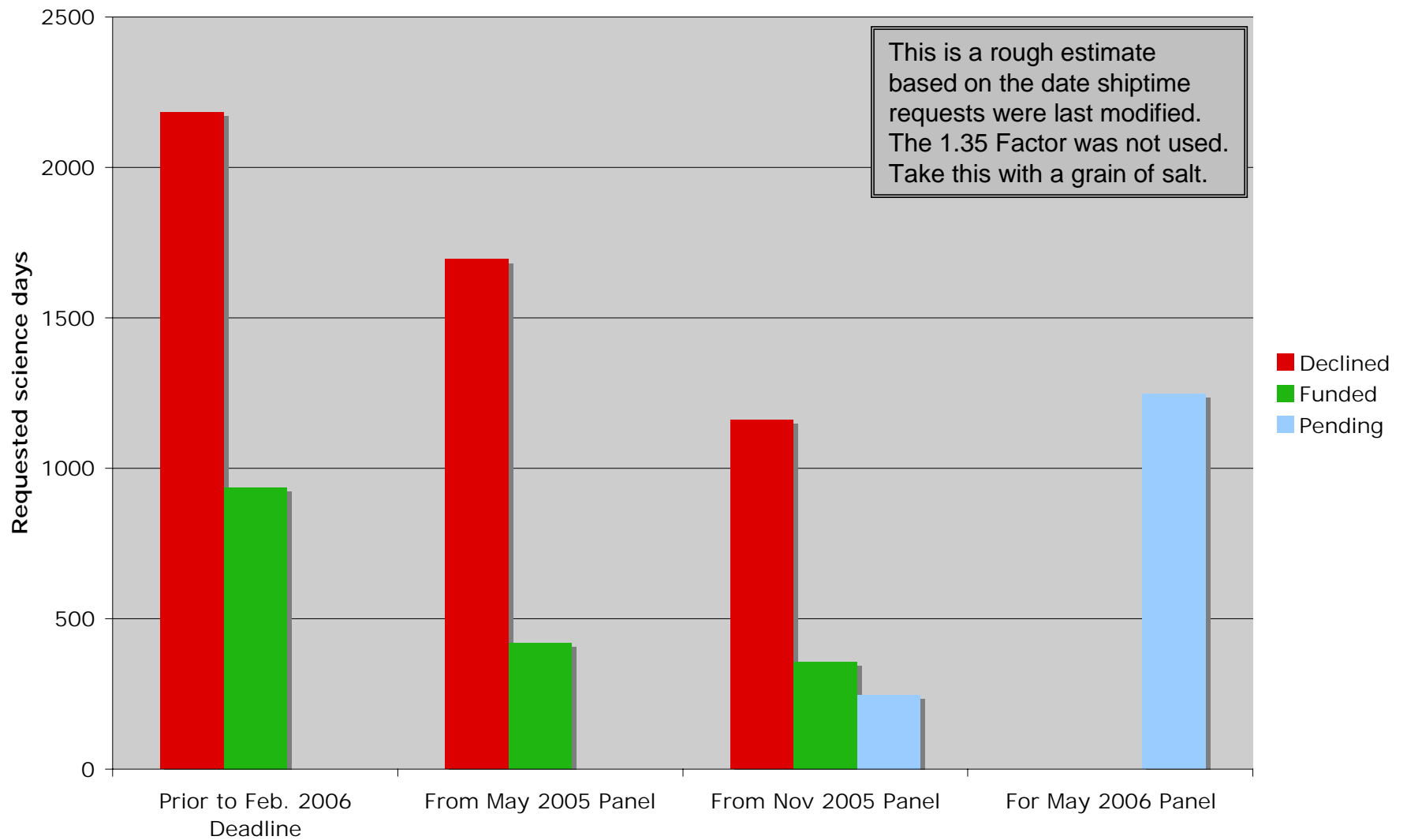


Funded and Deferred NSF Requests

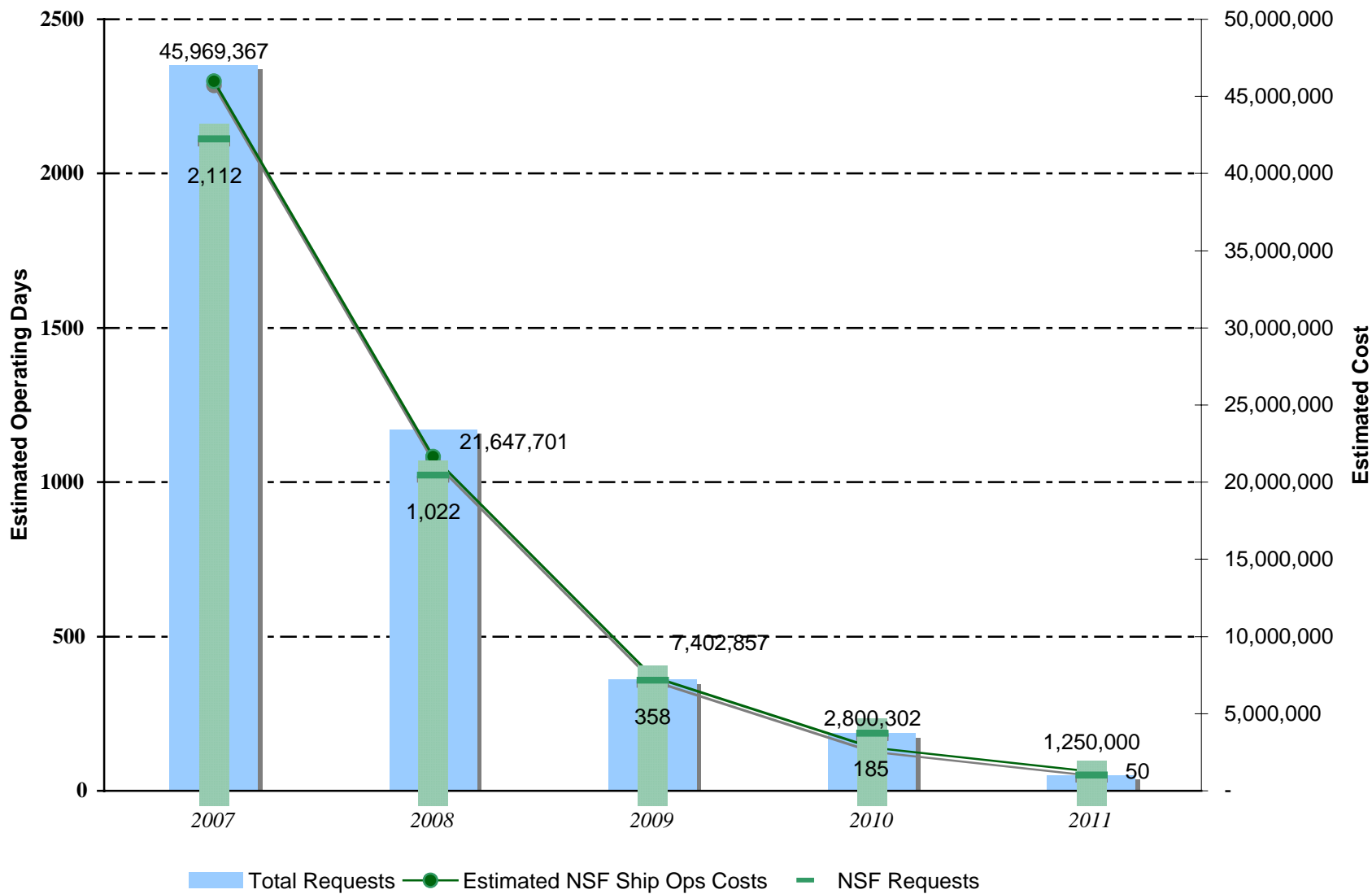
■ Scheduled ■ 2007 Request ■ Deferred 2006 Request ■ 2005 STR ■ 2004 STR



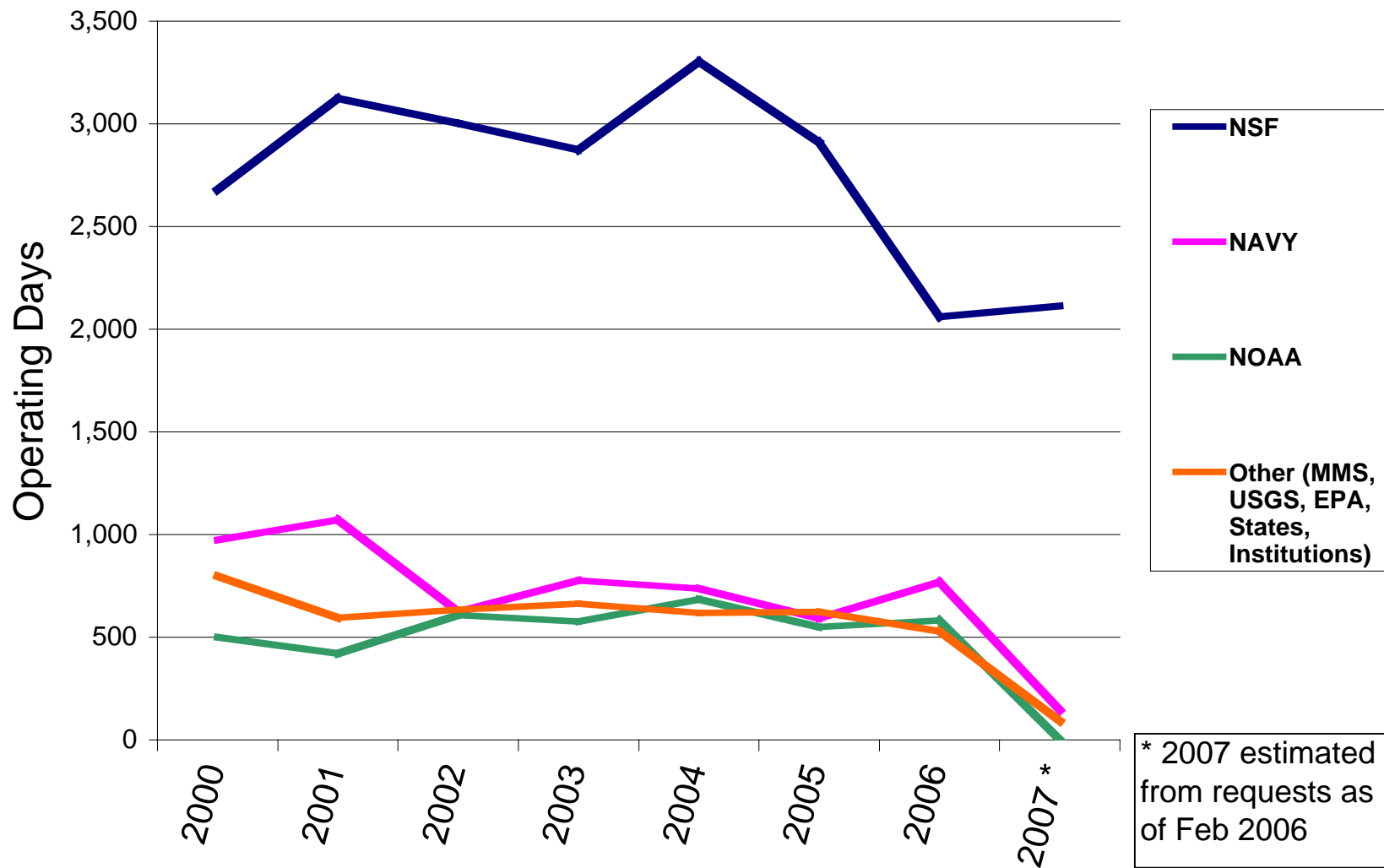
Funding Decisions for 2007 Requests by Panel Date (estimate)



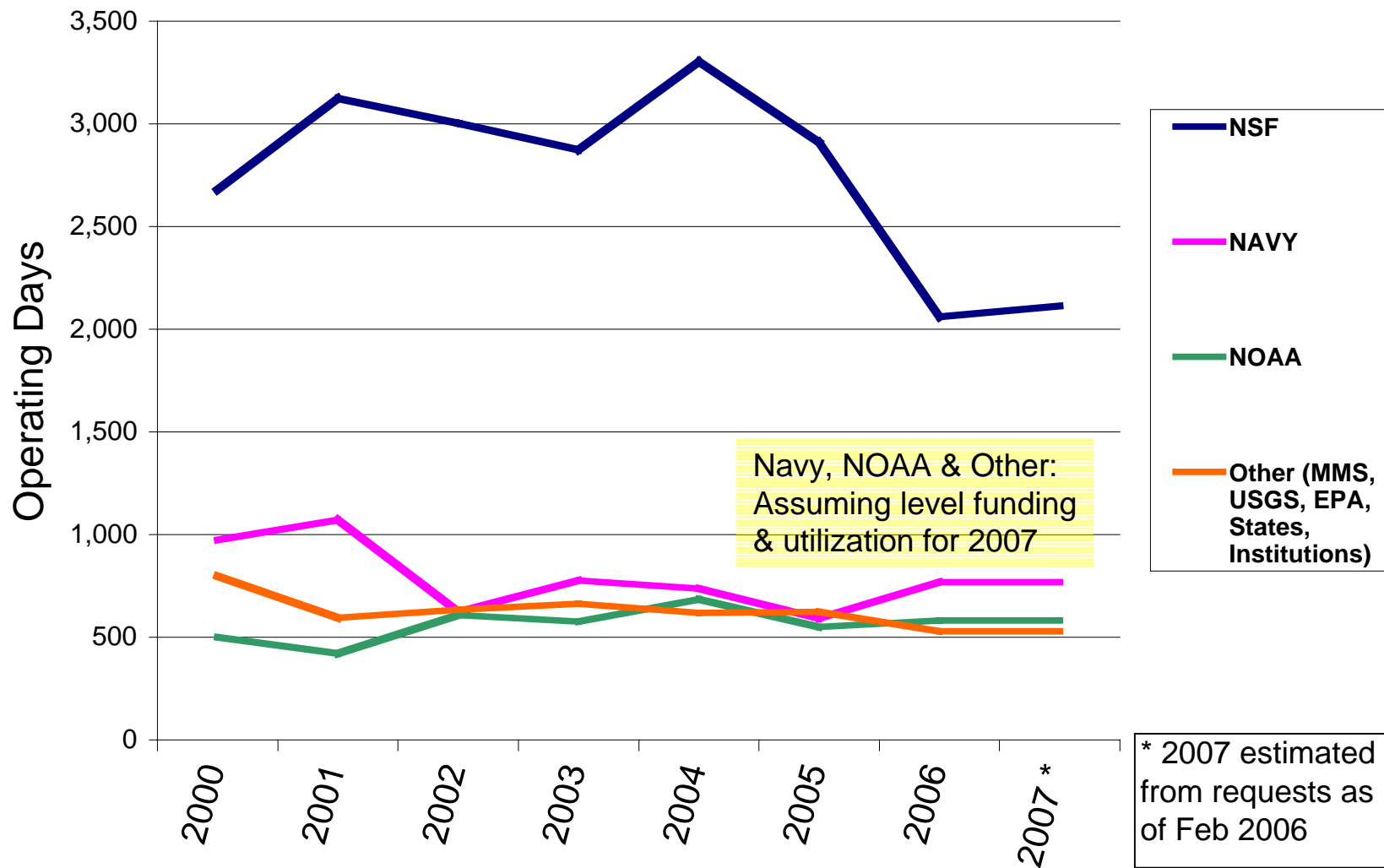
Funded Requests 2007 - 2011



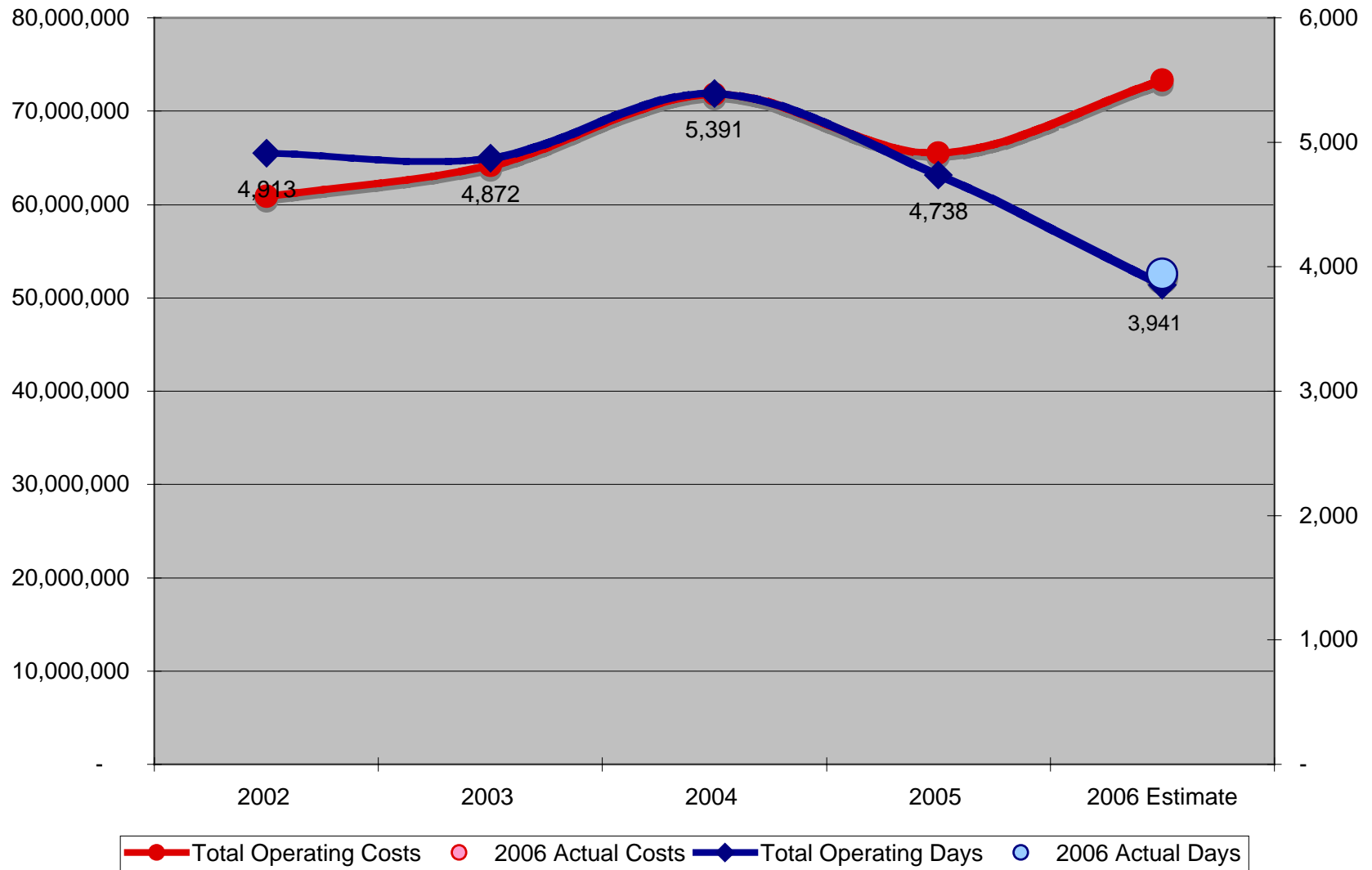
UNOLS Fleet Utilization (2000 - 2007)



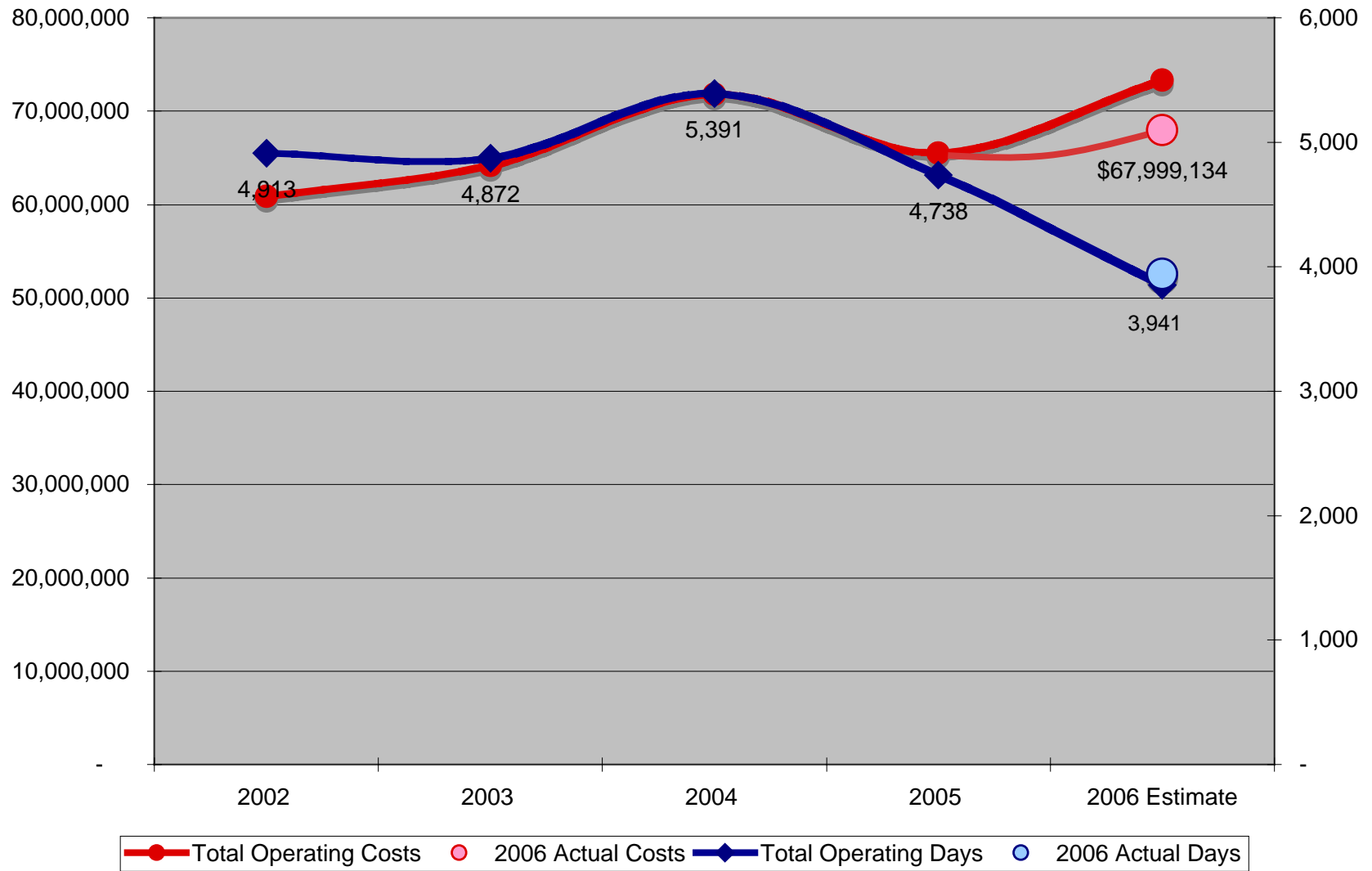
UNOLS Fleet Utilization (2000 - 2007)



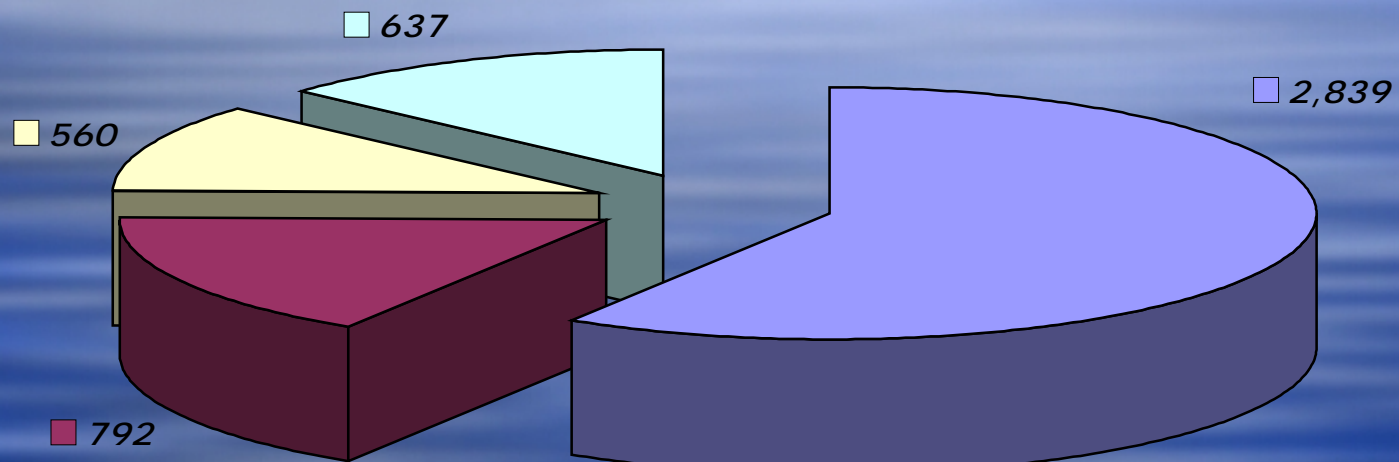
2002 - 2006 UNOLS Fleet Operating Days and Costs



2002 - 2006 UNOLS Fleet Operating Days and Costs



Average Yearly Operating Days by Agency
2000 - 2006 (4,843 total days)



- NSF
- NAVY
- NOAA
- Other (MMS, USGS, EPA, States, Institutions)

Questions?

Only Ten LOI's Posted
as of March 10th

2007 UNOLS Operating Days

