

MARS

Monterey Accelerated Research System

A Test-bed for Regional Scale Cabled Observatories

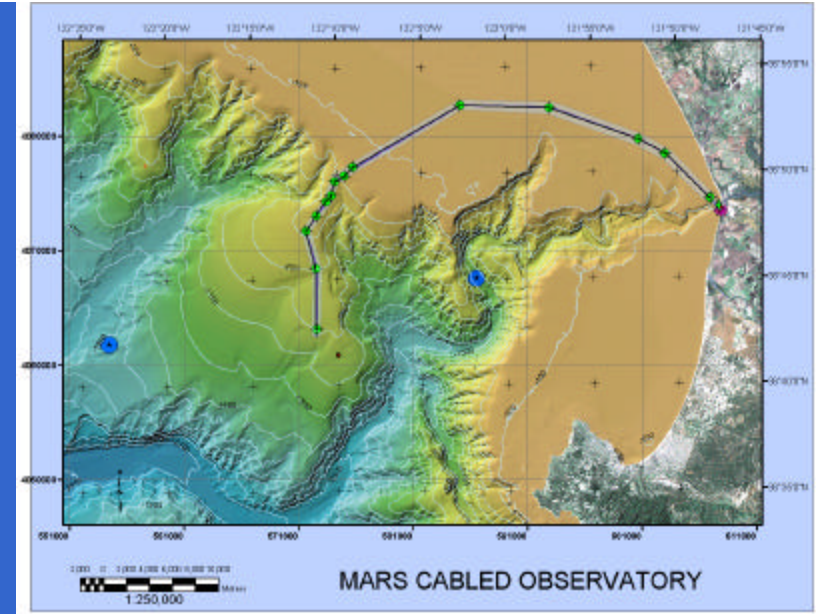
Start of Full Operations -- Fall 2006

<http://www.mbari.org/mars/>



What Is MARS?

- 62 km of fiber optic cable
- Single undersea node at .9 km depth
- 100 Mbits per second data rate
- 10 kW of power to 8 instrument ports
- Capability of siting instruments on “extension cords”



MARS Contacts

- Steve Etchemendy – MARS Facility CO-PI (Operations) etst@mbari.org (831) 775-1902
- Gene Massion – MARS Facility CO-PI (Technical) magene@mbari.org
- Craig Dawe – ROV Operations dacr@mbari.org