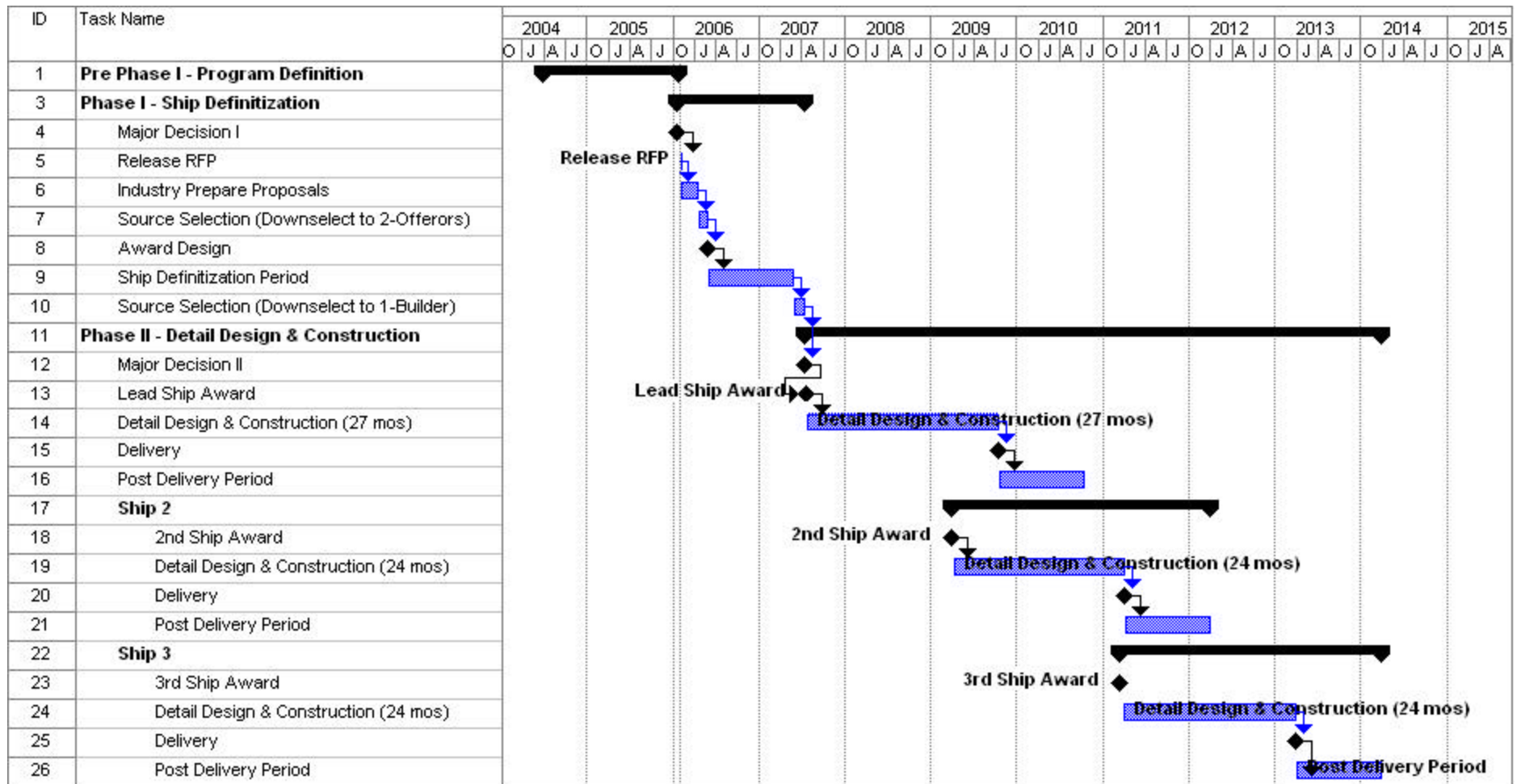




# Regional Class Research Vessel Program Schedule





## Regional Class Research Vessel Scientific Electronic Systems (SES)

### Purpose:

To solicit feedback from the user community on the technical specifications of the Scientific Electronic Systems to be installed on the RCRV.



## Regional Class Research Vessel Scientific Electronic Systems (SES)

The SES include the following subsystems:

- Multibeam Survey System (MBSS)
- Single Beam Survey System (SBSS)
- Sub-bottom Profiler (SBP)
- Acoustic Doppler Current Profiler (ADCP)
- Acoustic Navigation and Tracking System (ANTS)
- Sea Surface Temperature Sensor (SSTS)
- Integrated Navigation System (INS)