

RVTEC 2005
OSU, Corvallis
8 -10 November 2005
ONR – Navy Report

John S Freitag

Program Officer, Code 321RF

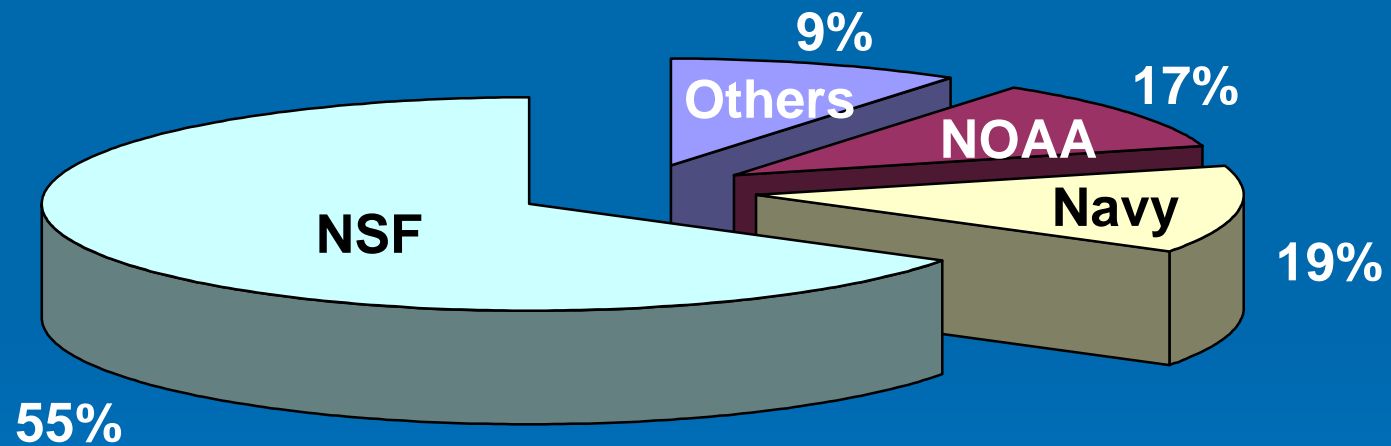
Office of Naval Research



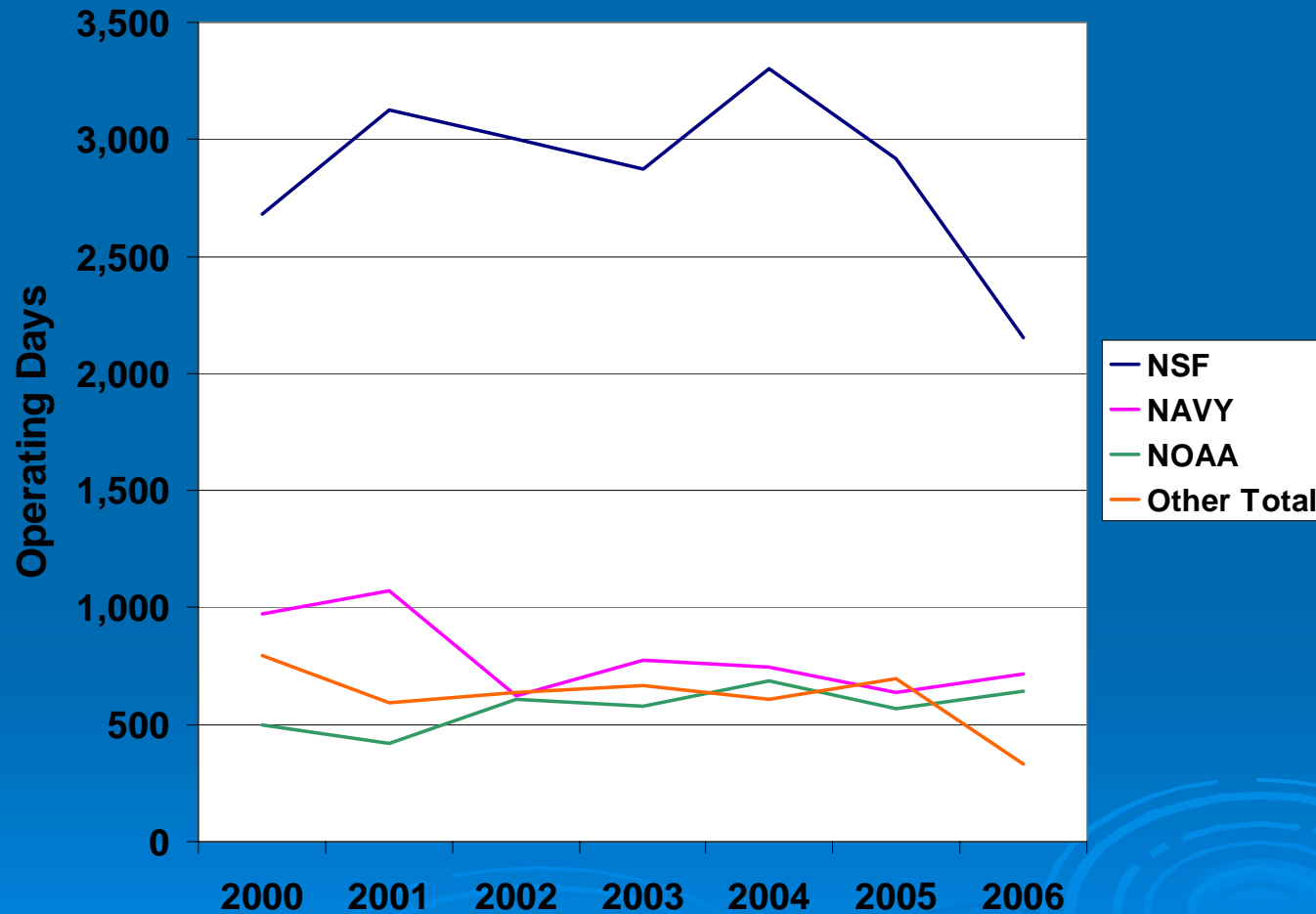
ONR Ship use for 2006

- ONR Field programs are back to 740+ day levels.
- There are 3 large multi ship programs for 2006:
 - SW06: 4 ship Shallow water Acoustic Experiment of the New Jersey coast, 45 – 55 days
 - Fish Monitoring and behavior study, a 21 day NOPP program involving 3 ships
 - Multi-disciplinary project involving 4 ships, FLIP and CIRPAS aircraft in Monterey Bay. Multiple interlocking projects

Ship use by Agency 2006

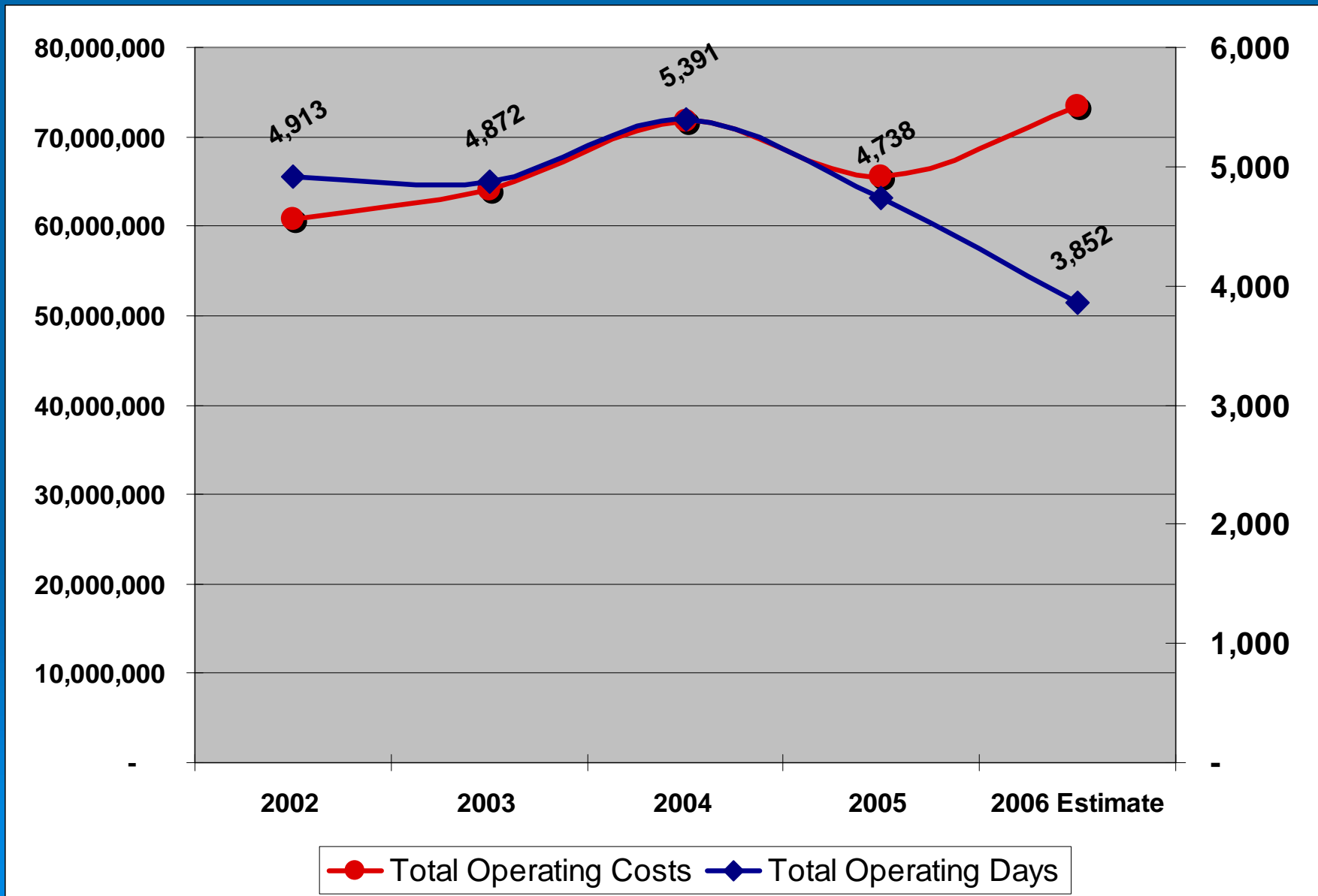


UNOLS Fleet Utilization (2000-2006)



Courtesy Annette Desilva

2002 – 2006 UNOLS Fleet Operating Days and Cost



INSURV Inspection program

- Thompson and Melville have been inspected under the new science program
- Science team has involved RVTEC
 - Tony Amos, Univ of Texas Marine Center
 - Stewart Lamerdin, Moss Landing
 - Mike Webb, NOAA PMC
 - Marc Willis, OSU
- No ship is yet scheduled for 2006, Kilo-Moana is next up on the list

INSURV Inspection program

- Program is run in cooperation with Navy INSURV team
- Inspection begins on Monday with inbrief, ends Thursday or Friday with outbrief
- 2 to 3 days at the dock followed by one sea day.
- Goal is to provide immediate feedback followed by a comprehensive written report.

Shipboard Handling Systems

- **The final report of the committee has been received.**
- **RFP for a new handling system put out by Matt Hawkins at UDel for systems for Sharp and Kilo-Moana**
- **Caley was selected on the basis of the bids received**
- **First system will be delivered to the Hugh R Sharp. It is anticipated that the second system will go on the Kilo-Moana**

OCEAN Class

- **The SMR have been finished**
- **The Hull studies are complete**
- **The FOFC Plan is in the process of being revised by the FOFC working group**

Future Trends?

- For every \$1.00 increase in the cost of fuel, the cost of a Global vessel rises by \$3,600/day or by \$1,000,000/year
- SOLAS, STCW, ISM, Homeland Security regs all increase operational cost.
- Agency budgets are NOT increasing and we feel fortunate if they stay level.

