

GEOSCIENCES

\$709,100,000

Geosciences Funding

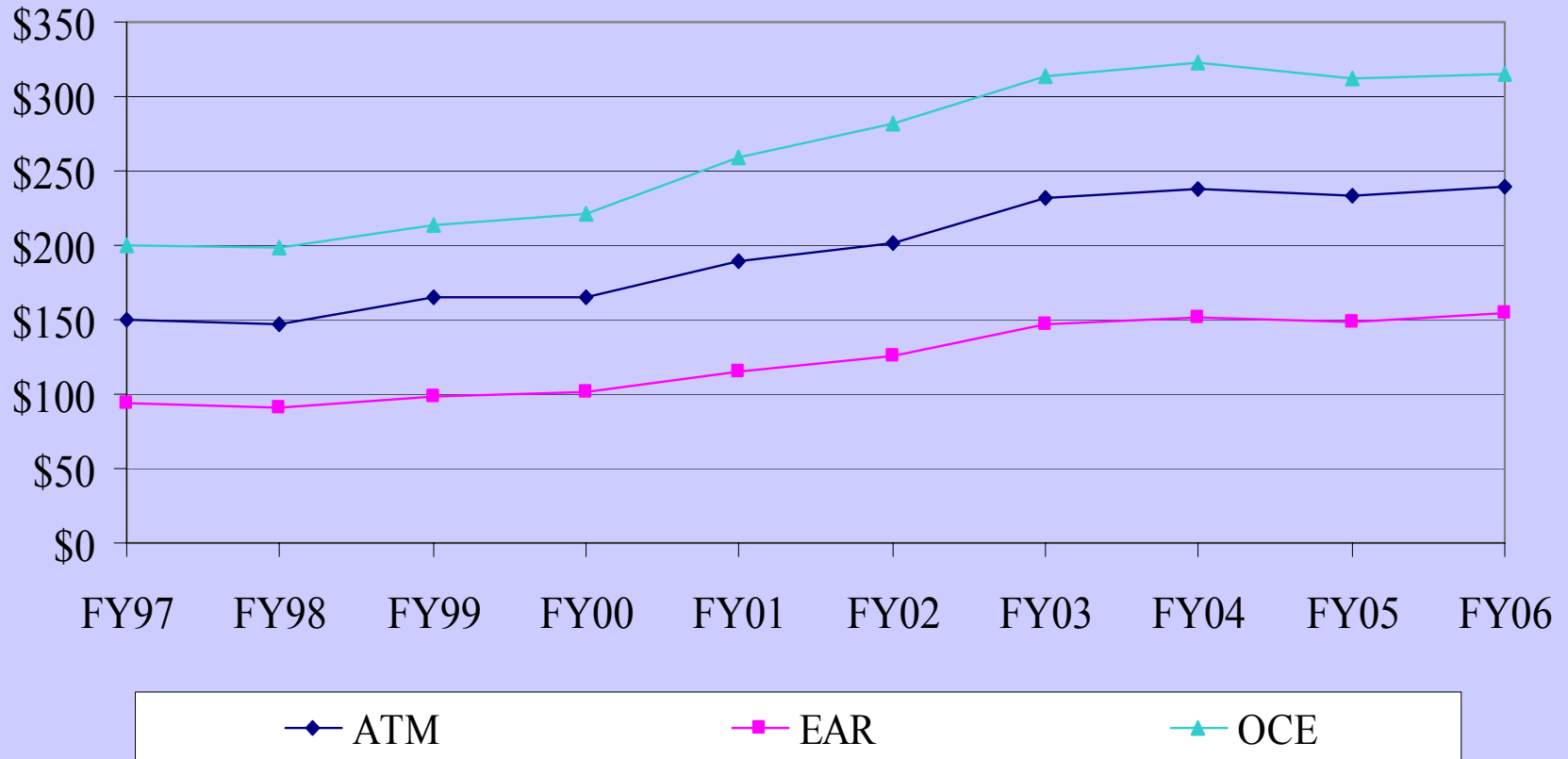
(Dollars in Millions)

	FY 2004	FY 2005	FY 2006	Change over	
	Actual	Current	Request	FY 2005	
		Plan		Amount	Percent
Atmospheric Sciences (ATM)	238.40	233.43	239.79	6.36	2.7%
Earth Sciences (EAR)	152.03	148.96	154.07	5.11	3.4%
Ocean Sciences (OCE)	322.98	311.77	315.24	3.47	1.1%
Total, GEO	\$713.41	\$694.16	\$709.10	\$14.94	2.2%

Totals may not add due to rounding.

GEO Divisions

GEO Subactivity Funding
(Dollars in Millions)



OCEAN SCIENCES

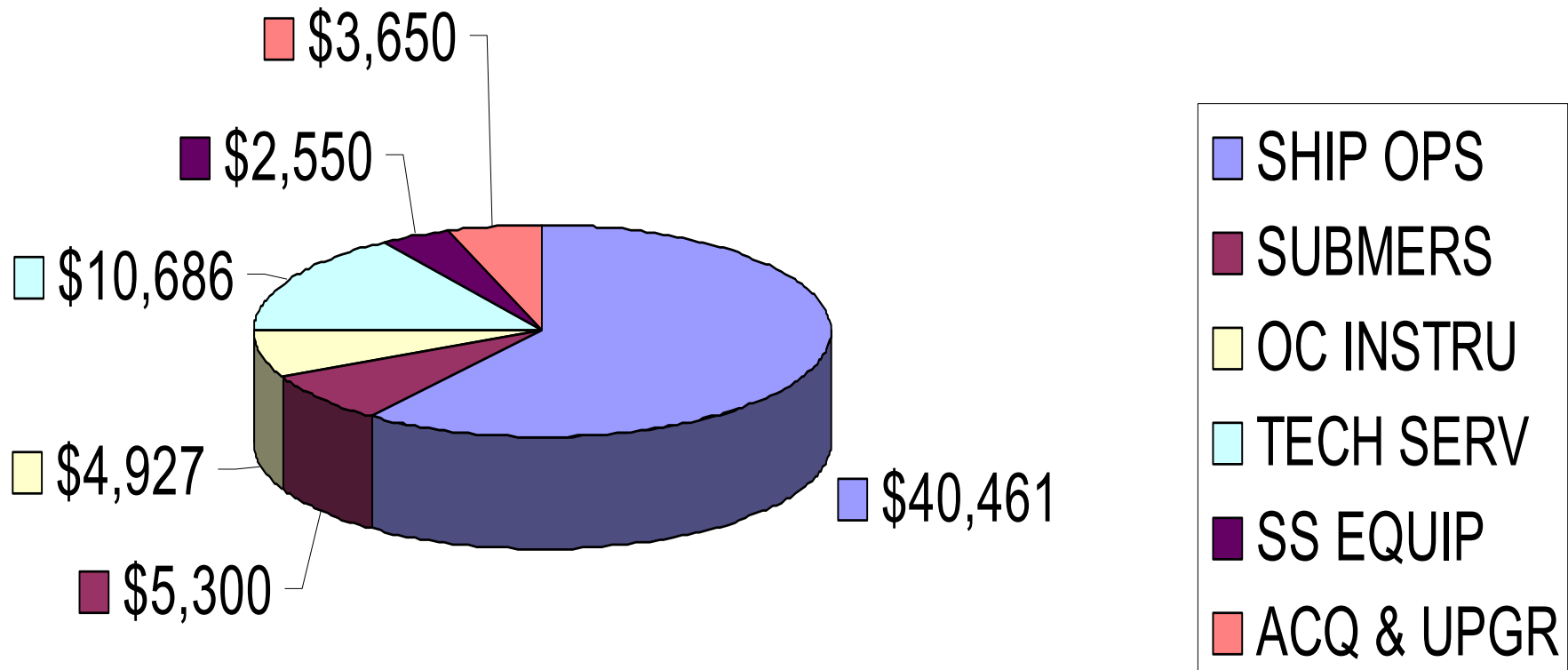
\$315,240,000

Ocean Sciences Funding

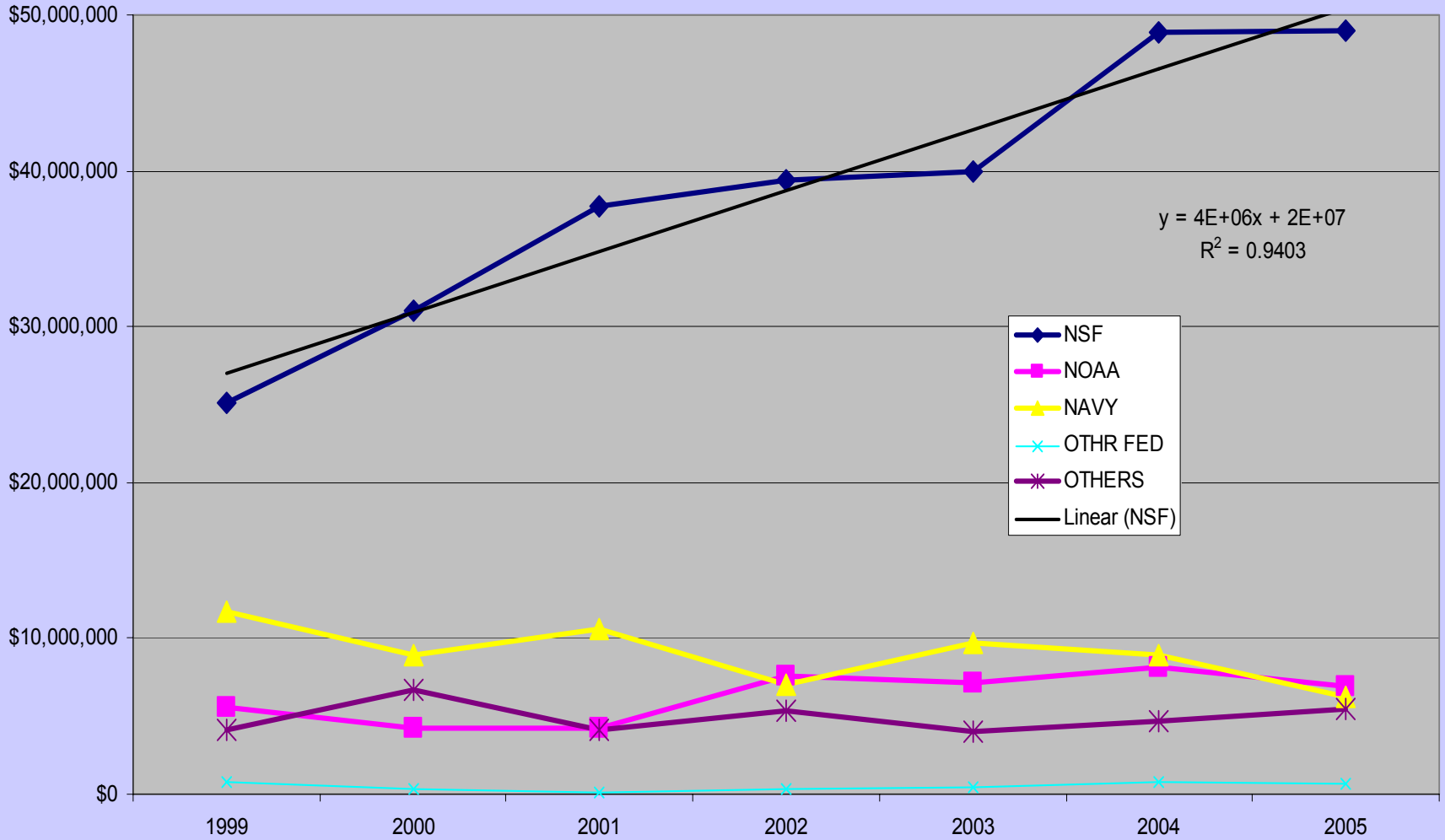
(Dollars in Millions pre- GEO & OCE taxes)

	FY 2005			Change over FY 2005	
	FY 2004	Current	FY 2006	Amount	Percent
	Actual	Plan	Request		
Ocean Section	120.35	115.98	117.28	1.30	1.1%
Integrative Programs Section	118.40	113.70	114.97	1.27	1.1%
Marine Geosciences Section	84.23	82.09	82.99	0.90	1.1%
Ocean Sciences	\$322.98	\$311.77	\$315.24	\$3.47	1.1%
Major Components:					
Research and Education Grants	194.85	181.64	190.61	8.97	4.9%
Long-term Ecological Research Centers	3.63	3.63	3.63	0.00	0.0%
Facilities					
Academic Research Fleet	82.50	83.20	83.20	0.00	0.0%
Integrated Ocean Drilling Program (IODP)	35.10	32.10	30.00	-2.10	-6.5%
Other Ocean Sciences Facilities	6.90	11.20	7.80	-3.40	-30.4%

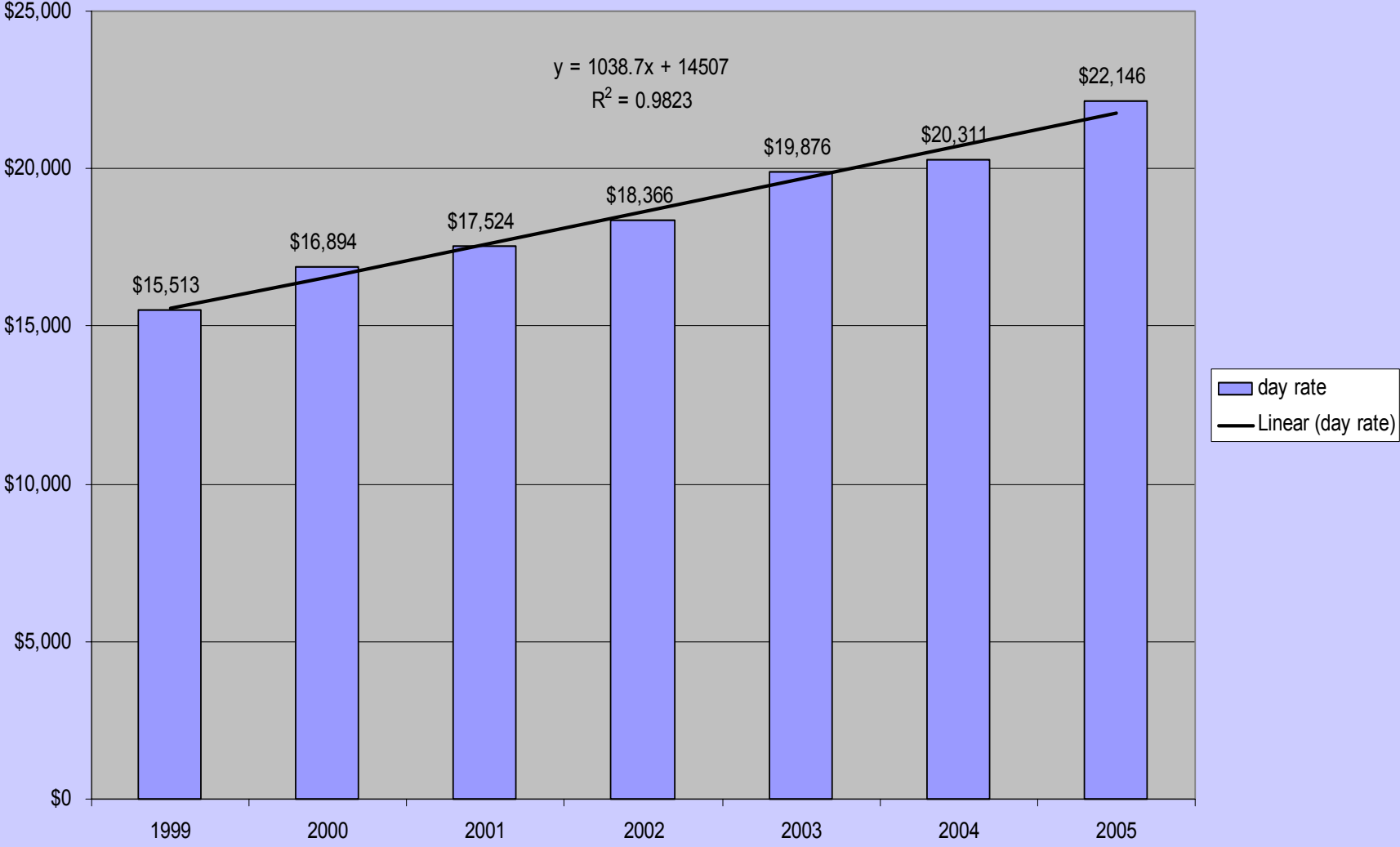
"ACADEMIC RESEARCH FLEET" FY2005 from '06 Budget request -- \$K

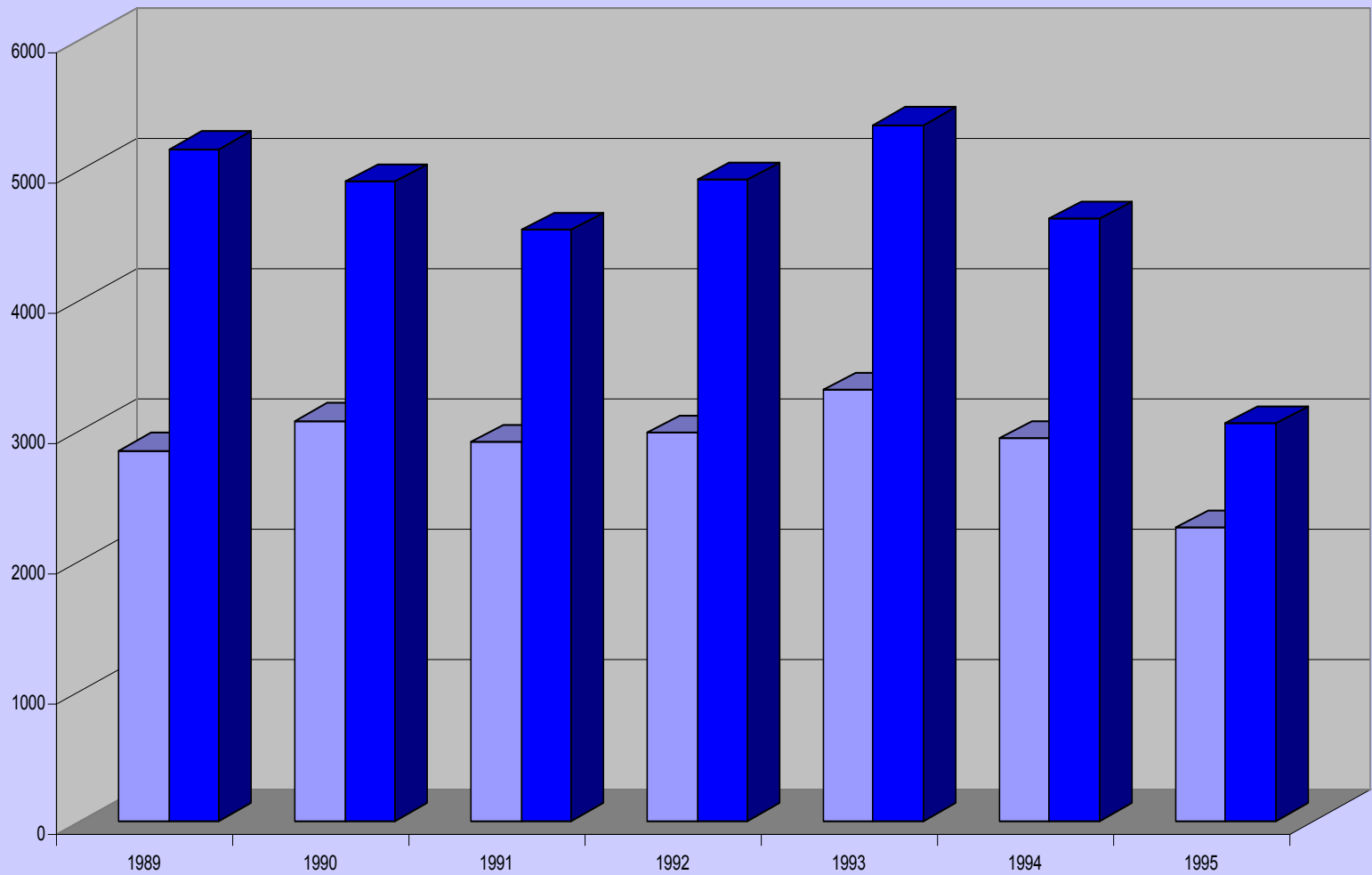


SHIP COSTS BY AGENCY- TOTAL FLEET



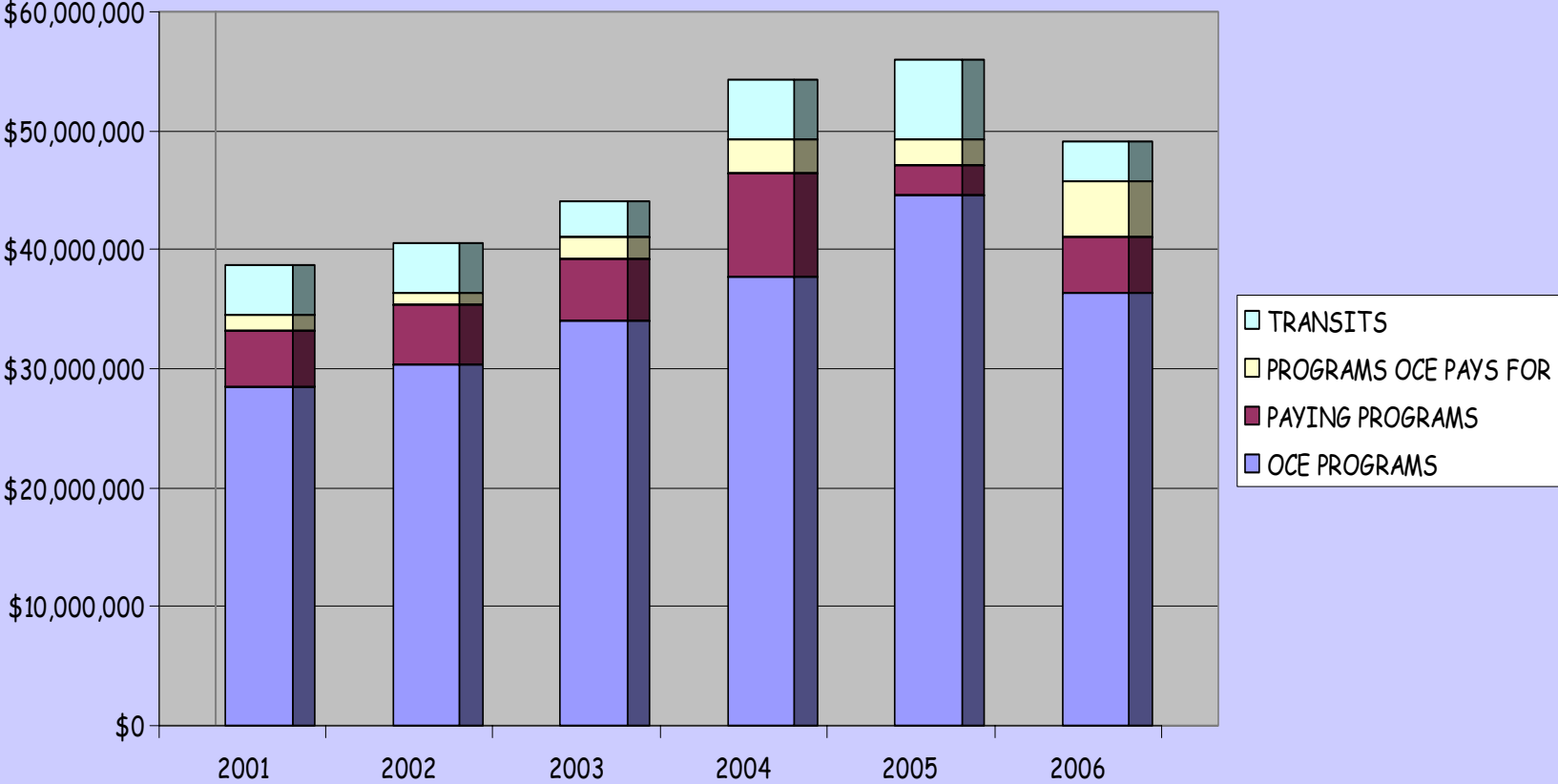
Day rates for global class ships (includes km)



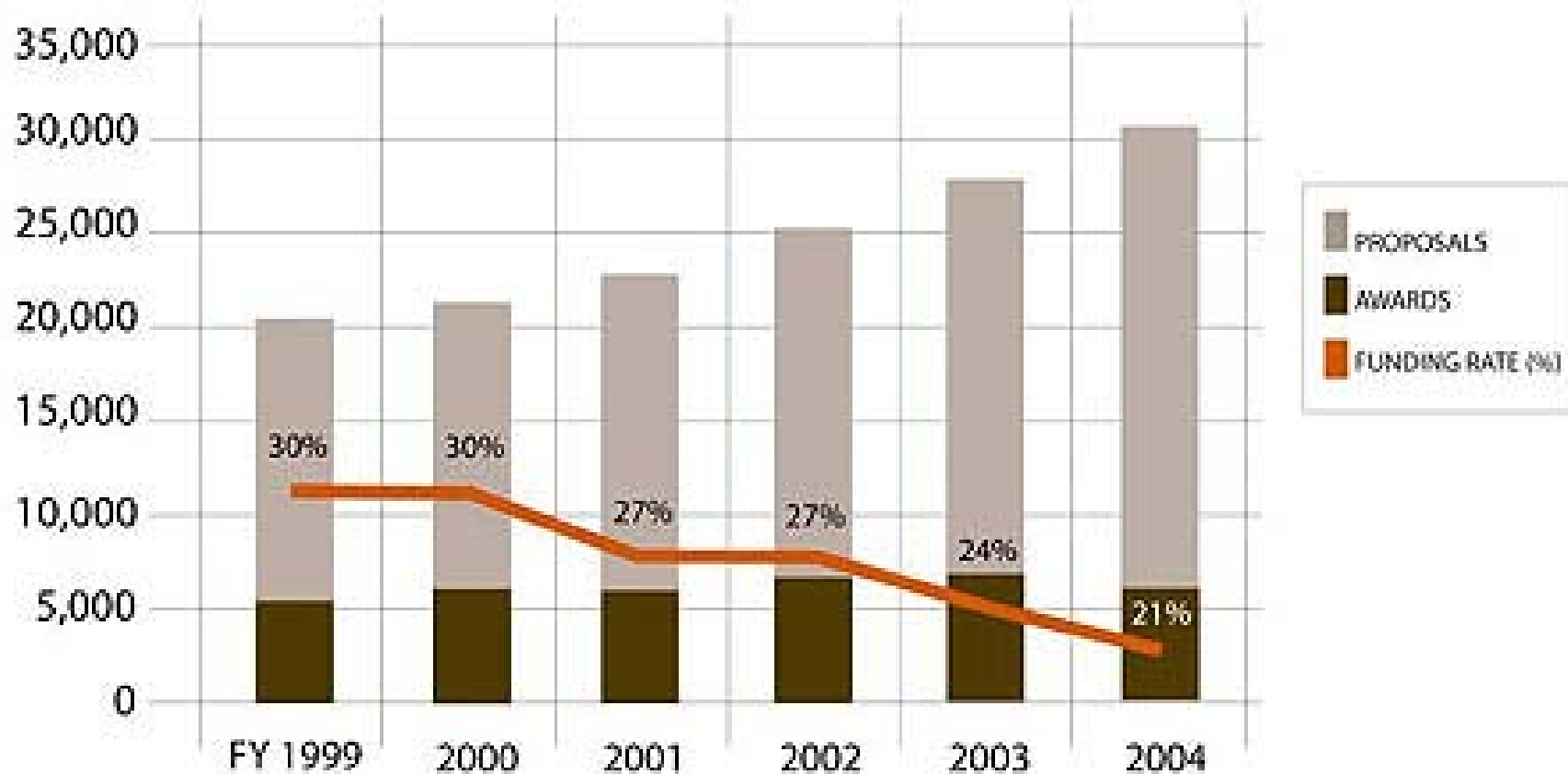


■ NSF FUNDED DAYS ■ TOTAL OPERATING DAYS

SHIP OPERATIONS COSTS 2001-2006



Funding Rate, NSF Research Grants



The Challenge for Today and Tomorrow:

	2005	2006
OCE FUNDS	\$40.0 M	\$37 M
PREPAID	4 M	0
BE	1.5 M	0
OPP	0.2 M	1.0 M
ODP	.05 M	3.3 M
	\$46.2 M	\$41.3 M