

# Technical Internship Program

---

- **Since 1999, MATE has placed 123 students on research vessels, in labs, and in industry settings**
- **Students came from community colleges and universities across the country; 58% were women, 41% were men, and 27% were ethnic minorities**
- **53 interns received job offers in marine technology fields as a result of their participation in the internship program**



# Gavin Eppard

---

**THEN:** student at Monterey Peninsula College (MPC) who participated in several MATE internships in 2000 and 2001

**NOW:** *ALVIN* pilot (almost!) and mechanical engineer at WHOI





# Chad Waluk

---

**THEN:** student at MPC who participated in the MATE internship program in 2002



**NOW:** faculty research assistant with Oregon State University's AUV group (sails on the *R/V Wecoma*)



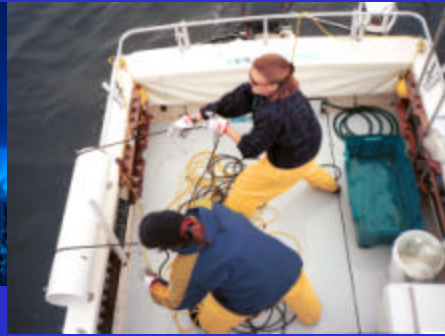
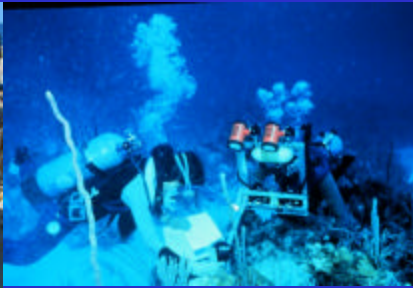
# Shinobu Okano

**THEN:** MPC student who interned on the *R/V Endeavor* in 2003 and on the *R/V Atlantis* with NOAA OE's cruise to the Gulf of Alaska seamounts in 2004

**NOW:** continuing her education at California State University Monterey Bay in seafloor mapping

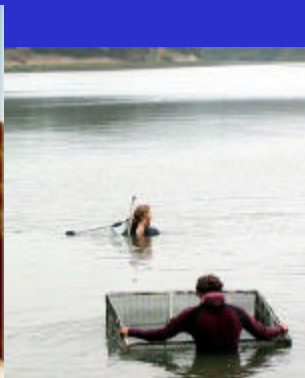






# Center for Ocean Science Education Excellence (COSEE) California

[www.OceanCareers.com](http://www.OceanCareers.com)





# MATE ROV competitions

- Began through a partnership with the MTS ROV Committee
- Include regional and national events
- To date, have involved 1,000+ students, working in teams, to tackle tasks based on the real world





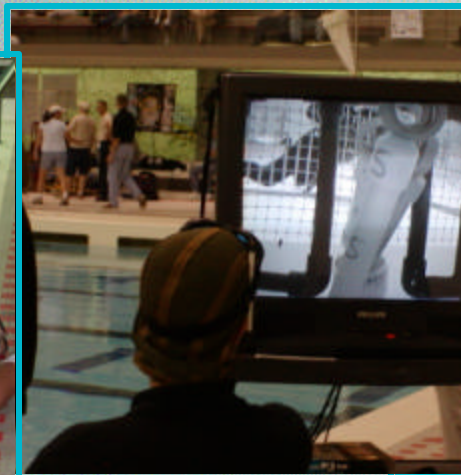
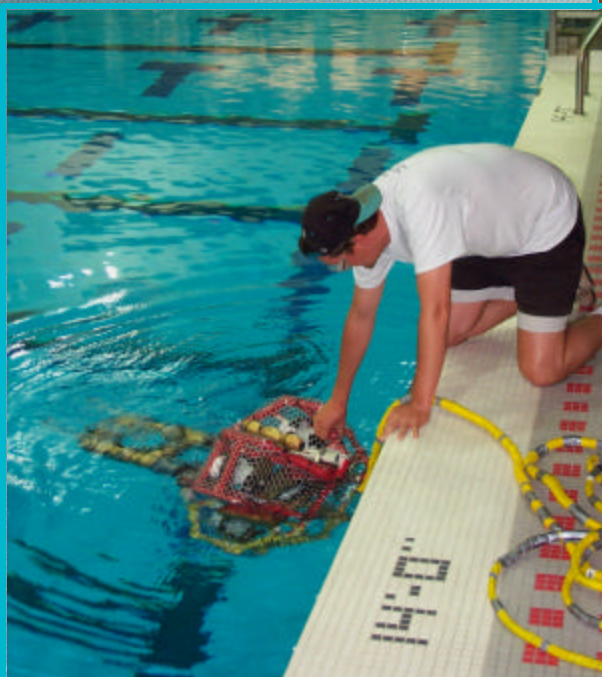
Walden Media presents



Massachusetts Institute of Technology (MIT)  
June 19-21, 2003



**"Lost on the *Titanic*: Rusticles or Bust"**





# ROV COMPETITION

UNIVERSITY OF CALIFORNIA, SANTA BARBARA (UCSB)

Hosted at UCSB by the Marine Science Institute

**JUNE 25-27, 2004**



MATE  
MARINE  
ADVANCED  
TECHNOLOGY  
EDUCATION  
CENTER

BRINGING THE EXCITEMENT AND CHALLENGES OF  
**SANCTUARY SCIENCE  
& EXPLORATION**  
TO STUDENTS NATIONWIDE



**SPECIAL THANKS TO OUR SPONSORS!**



ITT Industries  
Engineered for life



DIVE PATCHES INTL.  
CUSTOM EMBROIDERED PATCHES, LAPEL PINS,  
AND OTHER SPECIALTY PRODUCTS  
WWW.DIVEPATCHES.COM





# Regional events

## ***Southern CA ROV Fly-Off***

- Birch Aquarium at Scripps & MTS-San Diego

## ***Texas Regional***

- Alvin CC & MTS-Houston

## ***New England Regional***

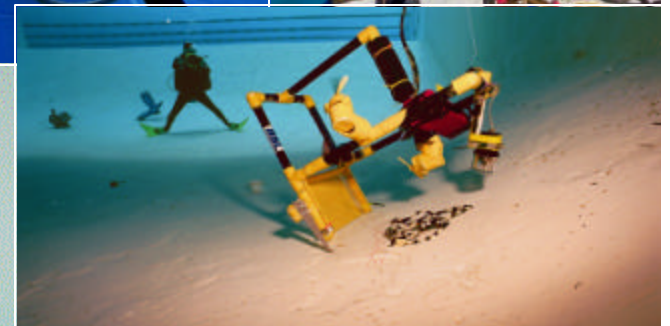
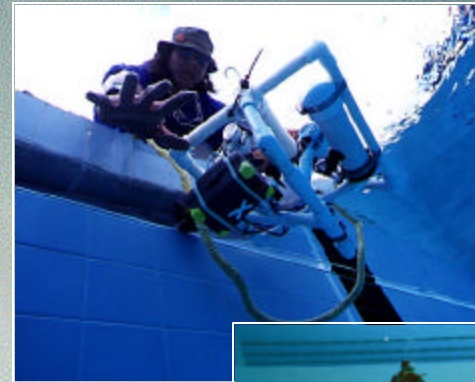
- Univ. of Rhode Island, MTS-NE,  
Stellwagen Bank NMS, & NURC-UConn

## ***Monterey Bay Regional***

- MATE, MPC, MB Aquarium, MBARI, MBNMS, & MTS-MB

## ***Hawaii Underwater Robot Challenge***

- Waipahu High School, University of Hawaii, MTS & IEEE  
OES-Hawaii

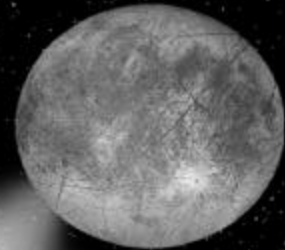




4th Annual

# ROV COMPETITION

From The  
**DEPTHS OF THE OCEANS  
TO OUTER SPACE**



*MISSION TO  
EUROPA*

*EXPLORER CLASS*

**MATE's 2005  
ROV COMPETITION**

**CHALLENGES STUDENTS  
TO DEVELOP  
TECHNOLOGY FOR BOTH  
SEA AND SPACE**



**MATE** For more information  
contact:

MATE  
MARINE  
ADVANCED  
TECHNOLOGY  
EDUCATION  
CENTER

Jill Zande, MATE's  
Competition Coordinator  
831.646.3082  
jzande@marinetech.org



**Underwater  
Olympics**

*Ranger Class*



# ROV Competitions for Students –

# Dive in!!!



Contact Jill Zande at [jzande@marinetech.org](mailto:jzande@marinetech.org) or  
(831) 646-3082

or visit

[www.marinetech.org/rov\\_competition/index.php](http://www.marinetech.org/rov_competition/index.php)

