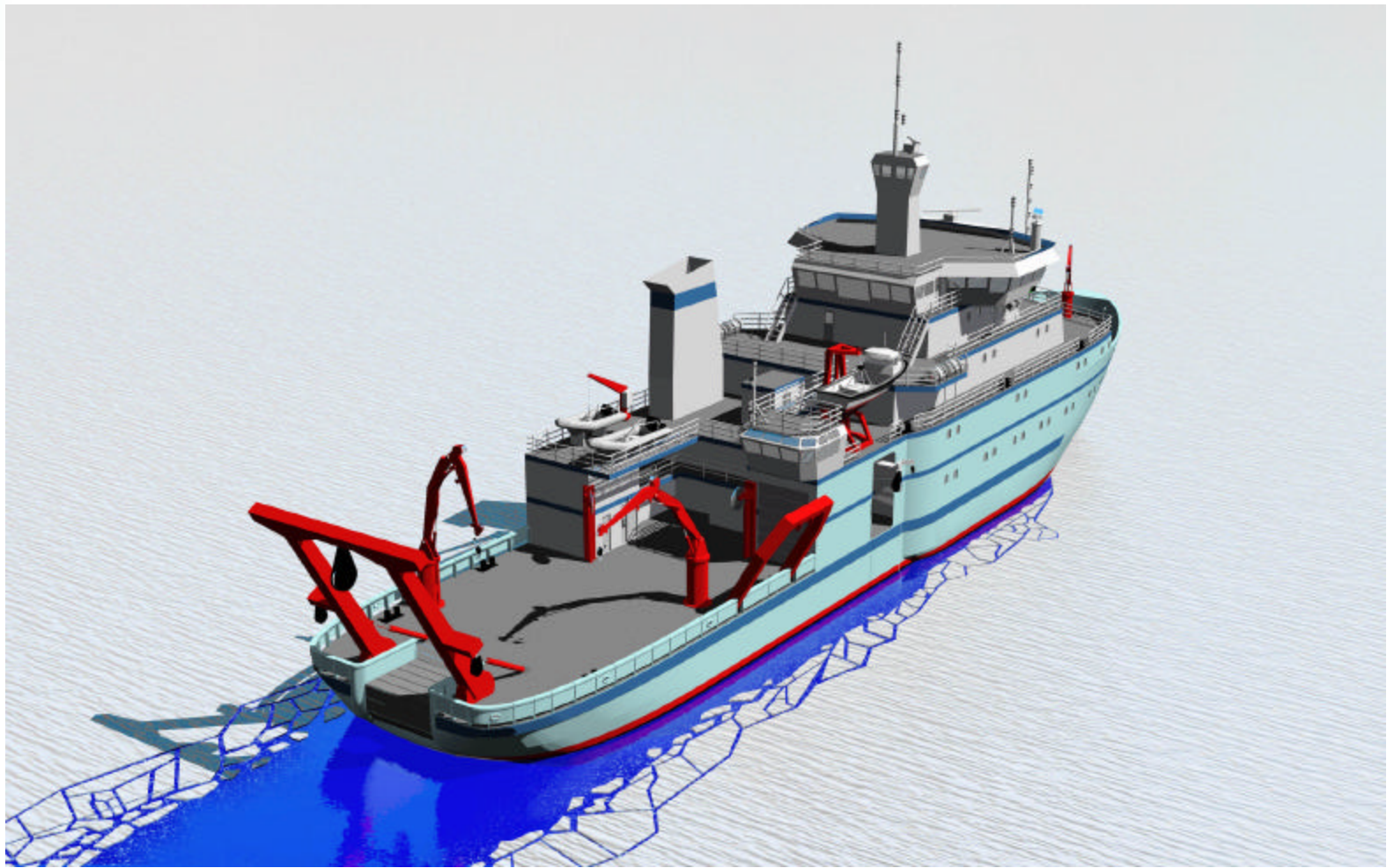


Alaska Region Research Vessel

University of Alaska Fairbanks



R/V Alpha Helix

University of Alaska Fairbanks





Alaska Region Research Vessel

UPDATE

- Contract Level Design – done mid-Nov
 - Drawing & Specifications
 - Continuing Design tasks
- Cost
 - Construction *Estimate 83 Million*
 - Operating Costs *Estimate 21,800/Operating Day*
- Polar Classification
 - Still Pending / IACS (International Association of Classification Societies)
 - Potential Design impact
- ADA (Americans with Disabilities Act) design
 - Attempting to meet intent of ADA

www.sfos.uaf.edu/arrv



Alaska Region Research Vessel



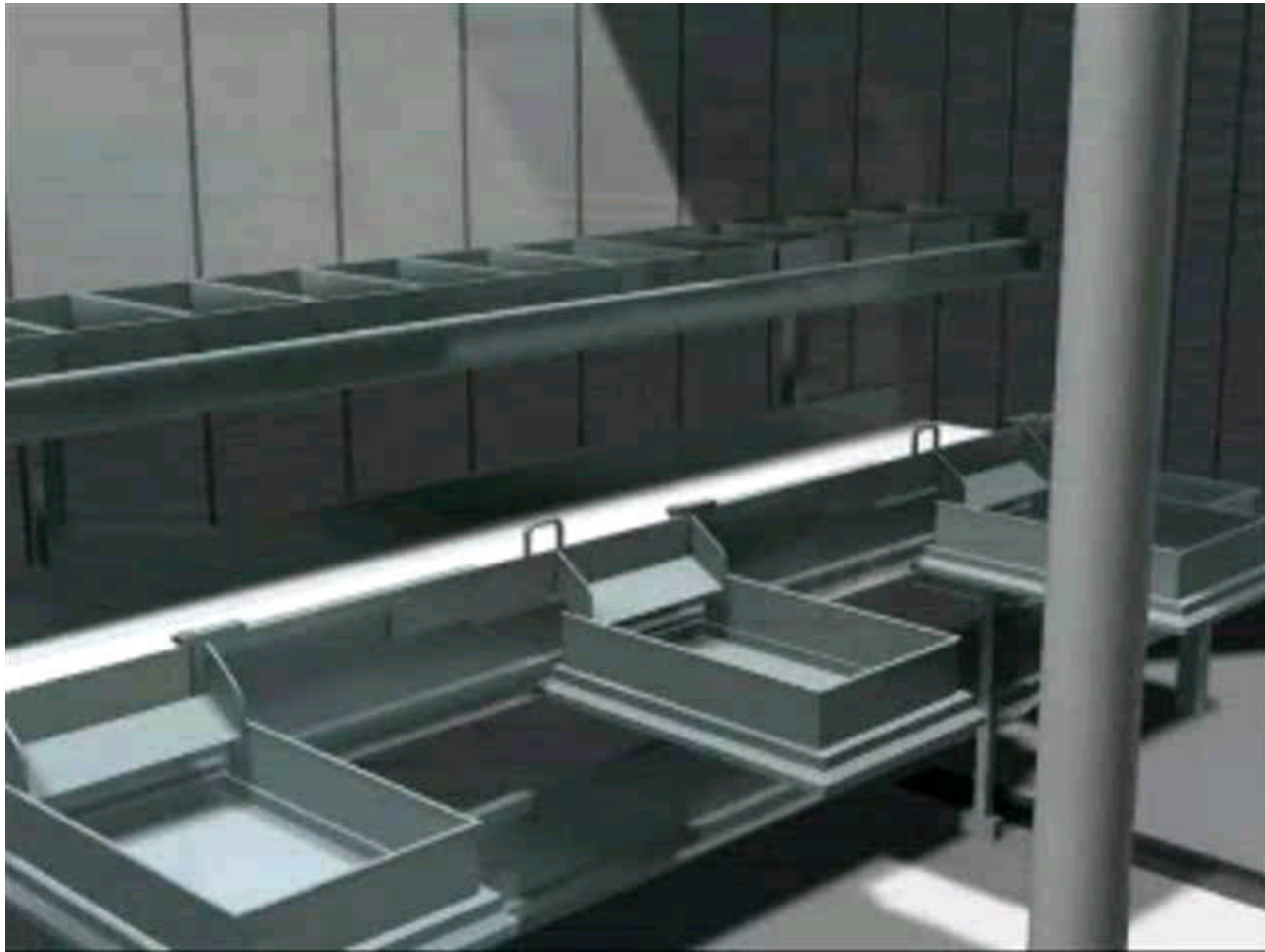


Continuing Design Tasks until Construction Funding Authorization

- Propulsion system especially electronic components
- Over-the-side handling system
- Scientific gear acquisition plan
- Laboratory design plan
- ADA accommodations

Over-the-side handling system

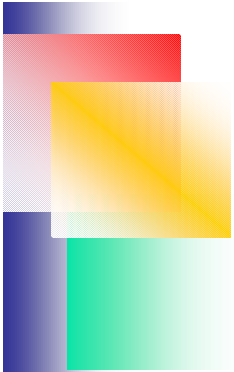
One of a few systems possible





Funding Expectations

- Will be submitted as a MRE (Major Research Equipment) item in NSF FY06 budget request
- Funding will occur over two fiscal years



Ship Operation Program		
I. Salaries		
a. Crew Salaries	\$1,038,739	
b. Overtime	\$256,661	
b. Benefits	488,801	
Sub-Total		\$1,784,201
a. Staff Salaries	140,000	
b. Benefits	47,600	
Sub-Total		\$187,600
II. Repairs		
a.. Normal	\$104,000	
b. Shipyard Fund	280,000	
Sub-Total		\$384,000
III. Other		
a. Fuel & Lube	1,231,400	
b. Food \$18/day@40	194,400	
c. Insurance (P&I)	25,000	
d. Stores	76,000	
e. Travel	76,400	
f. Shore Facilities	29,500	\$1,632,700
g. Miscellaneous		
1. Physicals/ Drug Tests	19,600	
2. Glosten	10,000	
3. Fire/Life Raft Insp	12,000	
4. ABS Inspections	3,000	
5. Taining	12,000	
6. Other(Phys, Drug Tests	15,000	
Glosten, ABS, Trng, Fire Ext		
&Life Raft Insp)		
Sub-Total		\$71,600

**Alaska Region Research Vessel
(ARRV)
Operating Cost Estimate**

Total Direct Costs		\$4,060,101
Overhead		\$1,285,234
Total Operating costs		\$5,345,335
Cost/Day Ship (270 days)		\$19,798
Technician Program		
Salaries	\$225,578	
Benefits	76,696	
Other (Calib, travel etc)	102,000	
Total Direct	404,274	
Overhead 34%	137,453	
Total Program Costs		\$541,727
Cost/day Tech (270 days)		\$2,006
Total Cost per Day		\$21,804



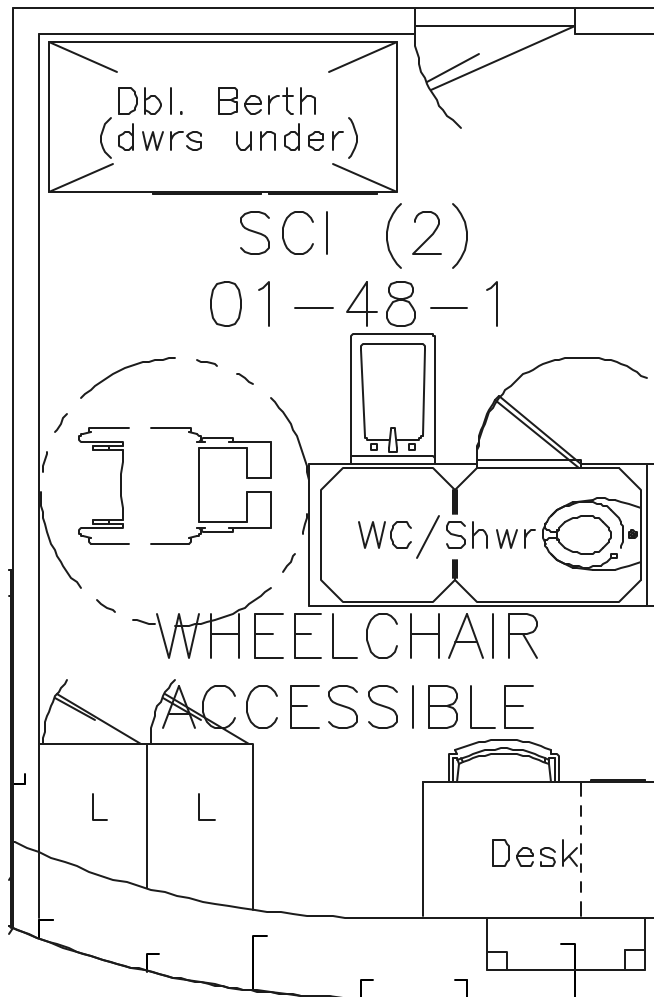
Alaska Region Research Vessel



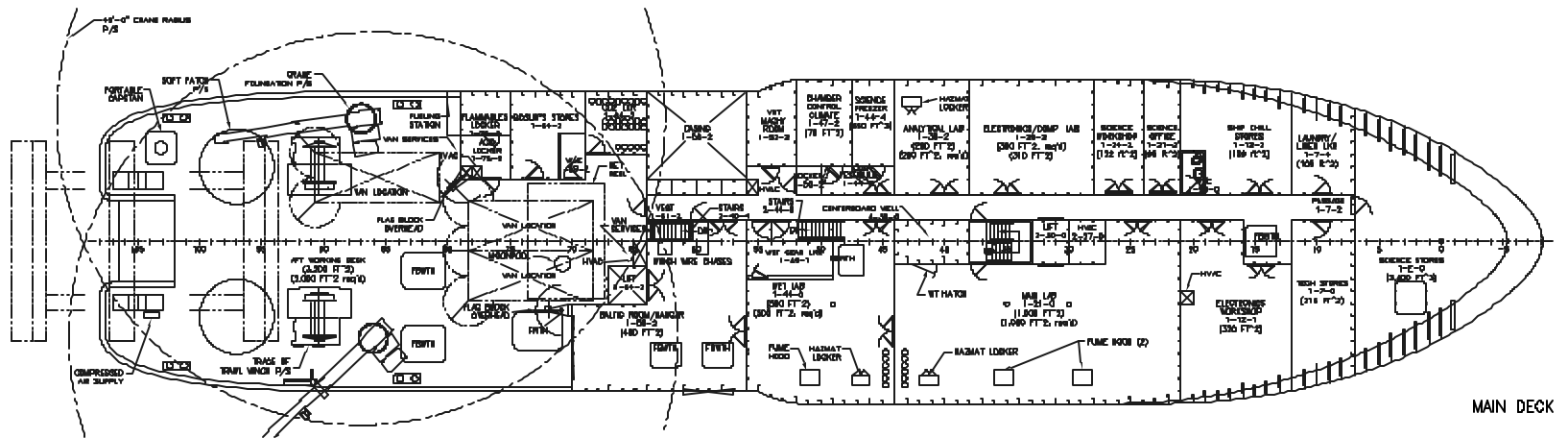
ADA Design Features

- Attempt to meet intent of ADA
- One ADA stateroom accessible via forward lift
- Top bunk in ADA stateroom a Pullman
- One ADA water closet on main deck
- 12:1 slope for interior sills to labs on main deck
- Navigate over 24” weather sill in Baltic room via cargo door and removable ramp
- Four foot wide passageways (36” clear)
- Minimum 32” door widths to mess, lounge, spa, gym, and labs

ADA Stateroom



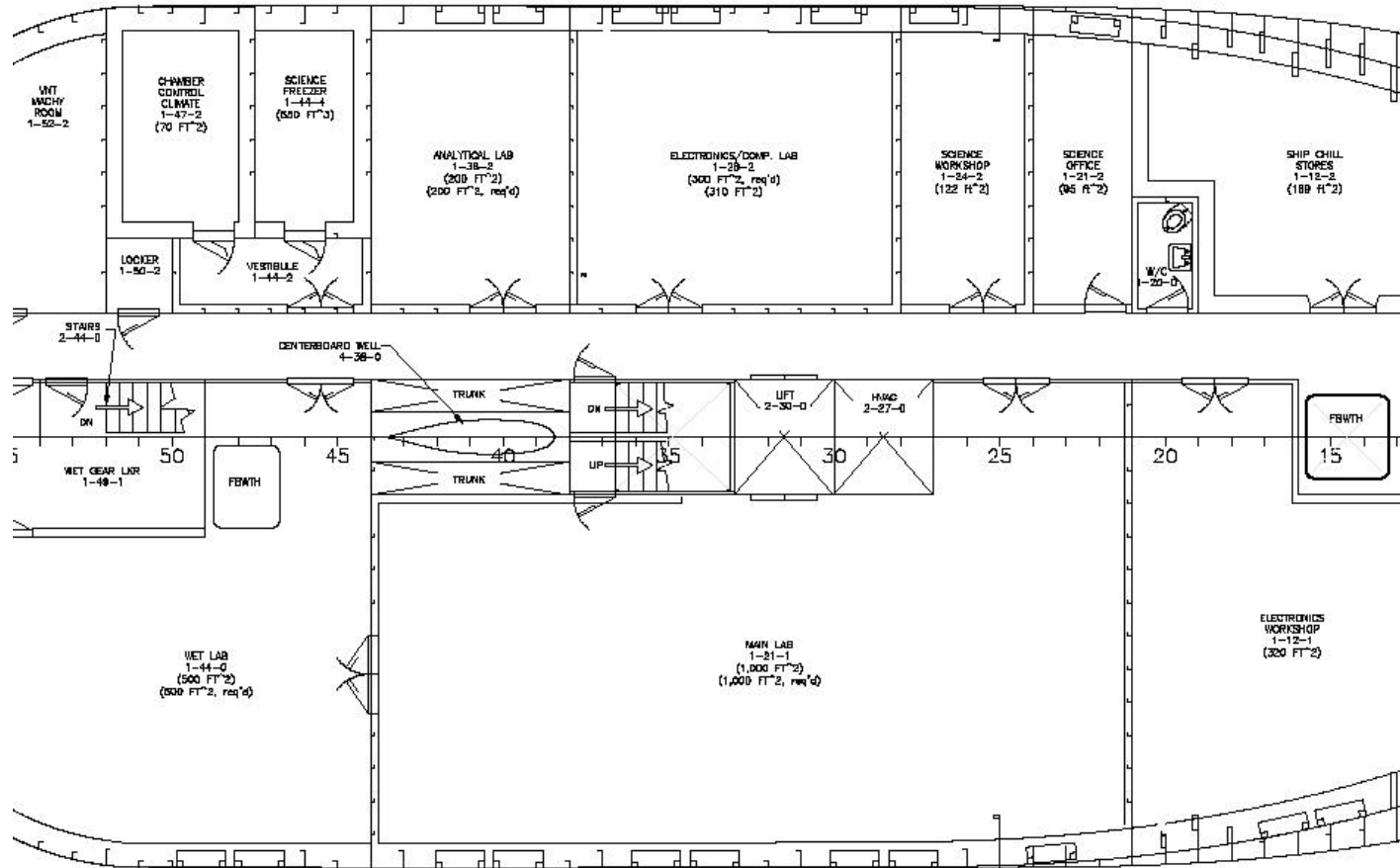
Main Deck



Alaska Region Research Vessel



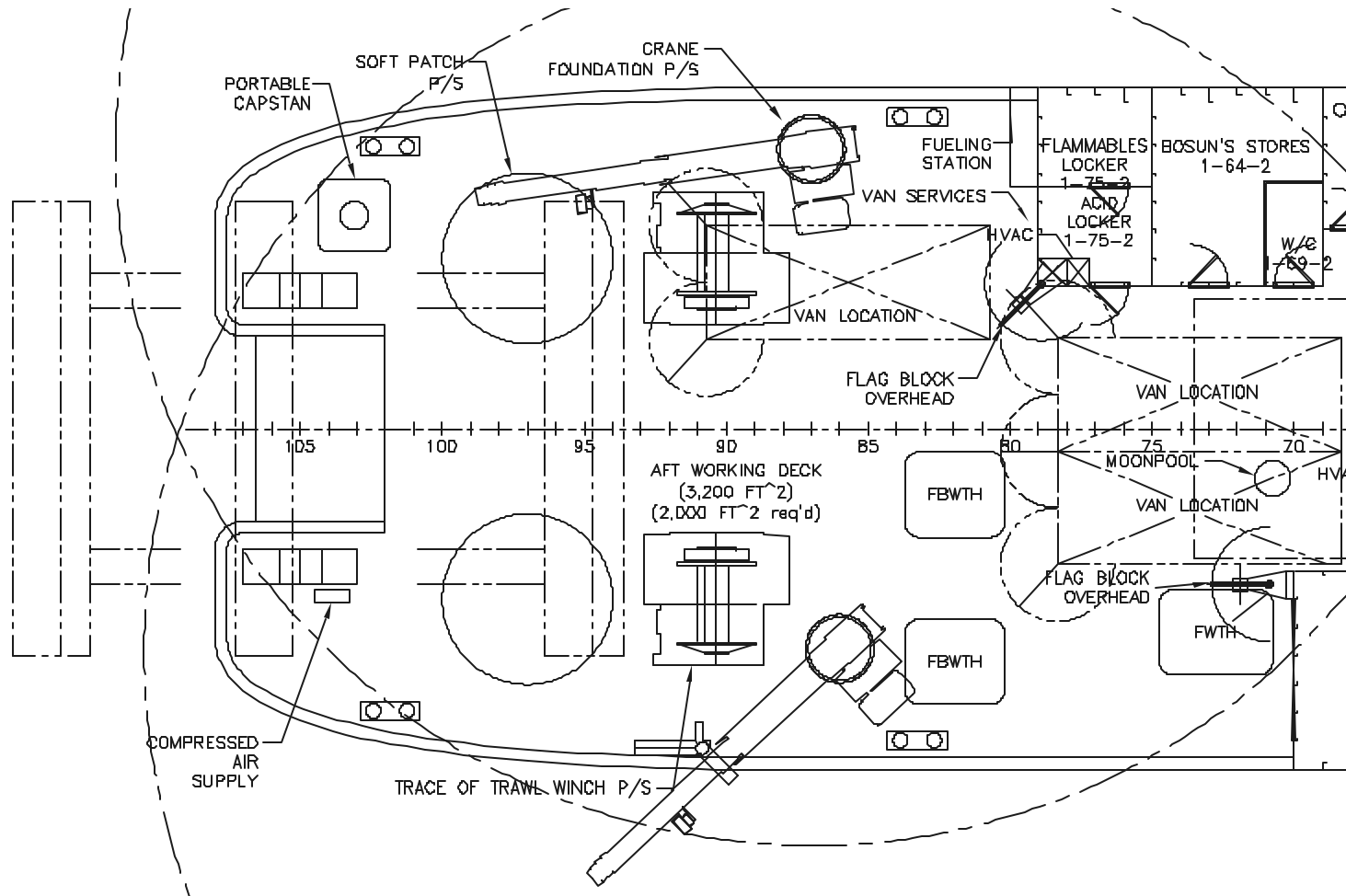
Main Deck Laboratory



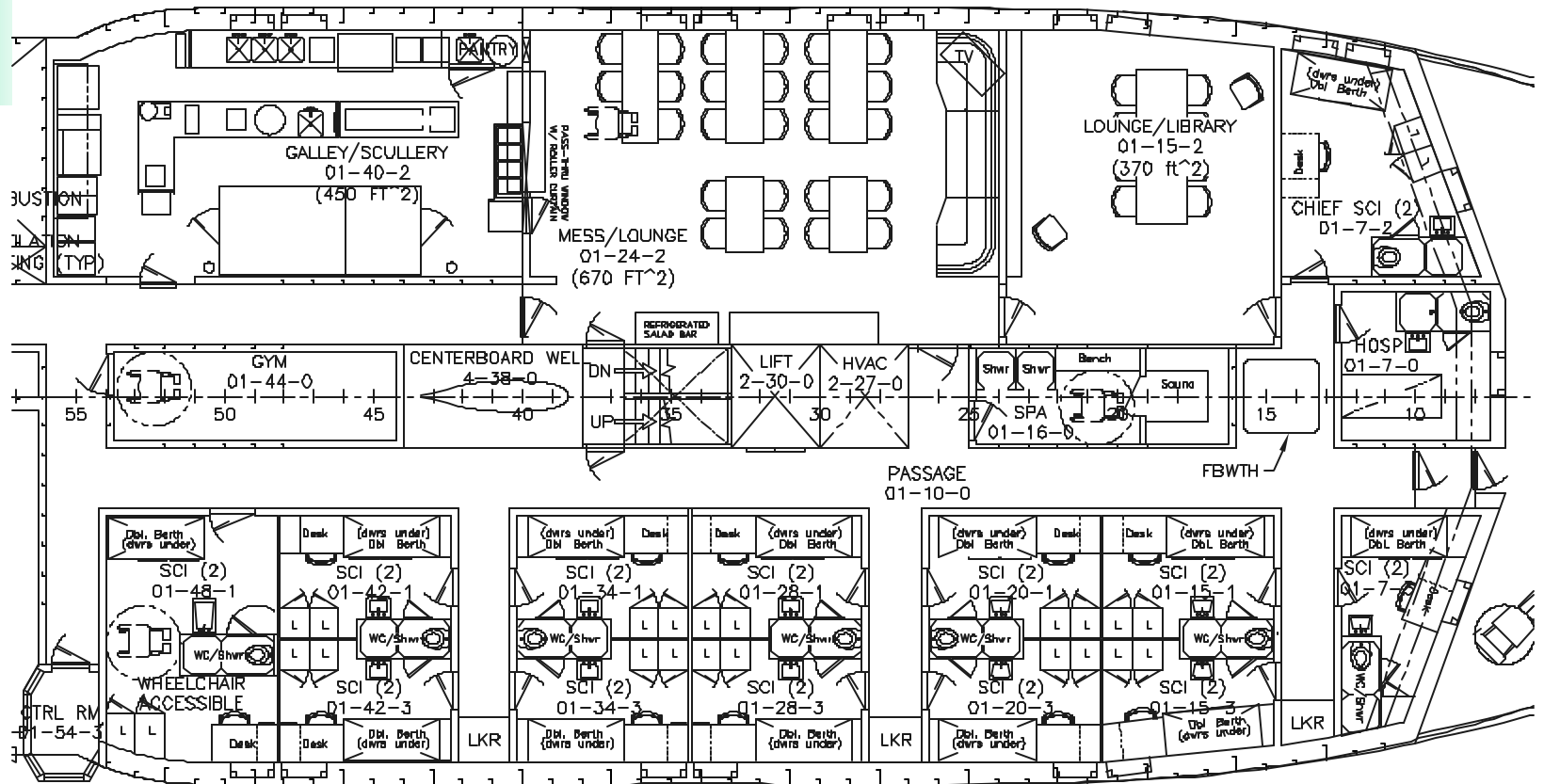
Alaska Region Research Vessel



Aft Working Deck



Galley/Mess Deck





Alaska Region Research Vessel



Seward Alaska



Alaska Region Research Vessel

