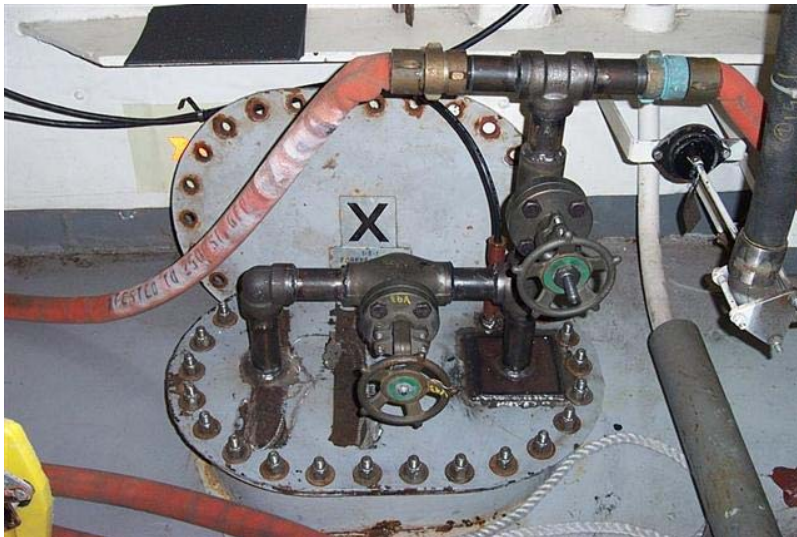


Science Sea Water Update



- New install complete
- 88 GPM (in ice)
- 1 coupling failure
 spare parts now
 aboard
- Improved design (still
 developing best
 operating strategy)

Current Status



- No flow for TSG in heavy ice
- Use ballast tank in heavy ice for incubator cooling
- Coordination required between Chief Scientist & Cutter
- Consumption budgeting is critical for incubators

Science Sea Water Terminology

(for discussion)

- Water for “permanent” flow through sensors
- Water for incubator cooling
- Water for lab sinks
- Water for “washing/flushing” on deck

Details

- For each “use” we need to define
 - Duty cycle
 - Temperature constraints
 - Flow
 - ?