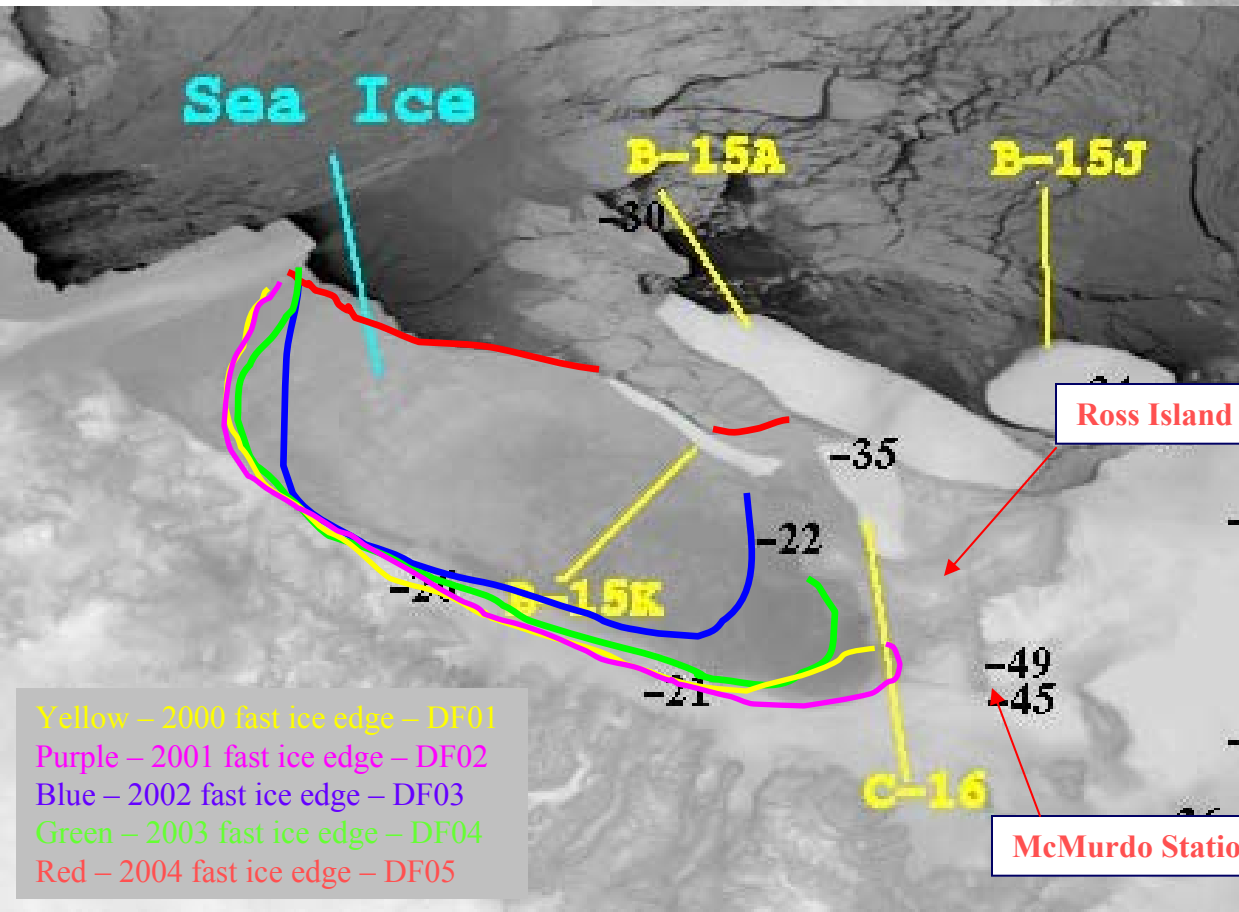
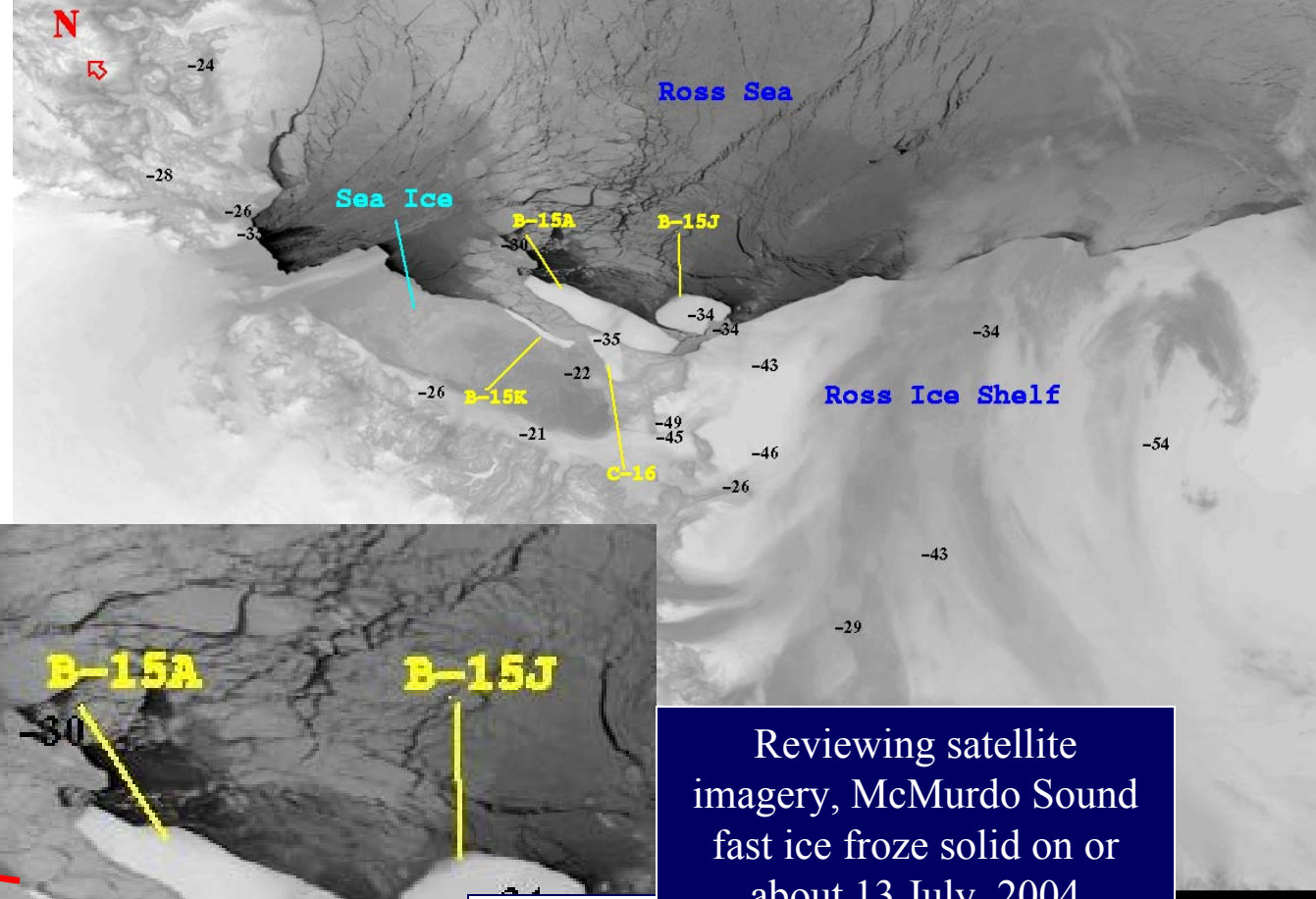


# AICC USCG Program Update



Security

# DF 05 Ice Conditions

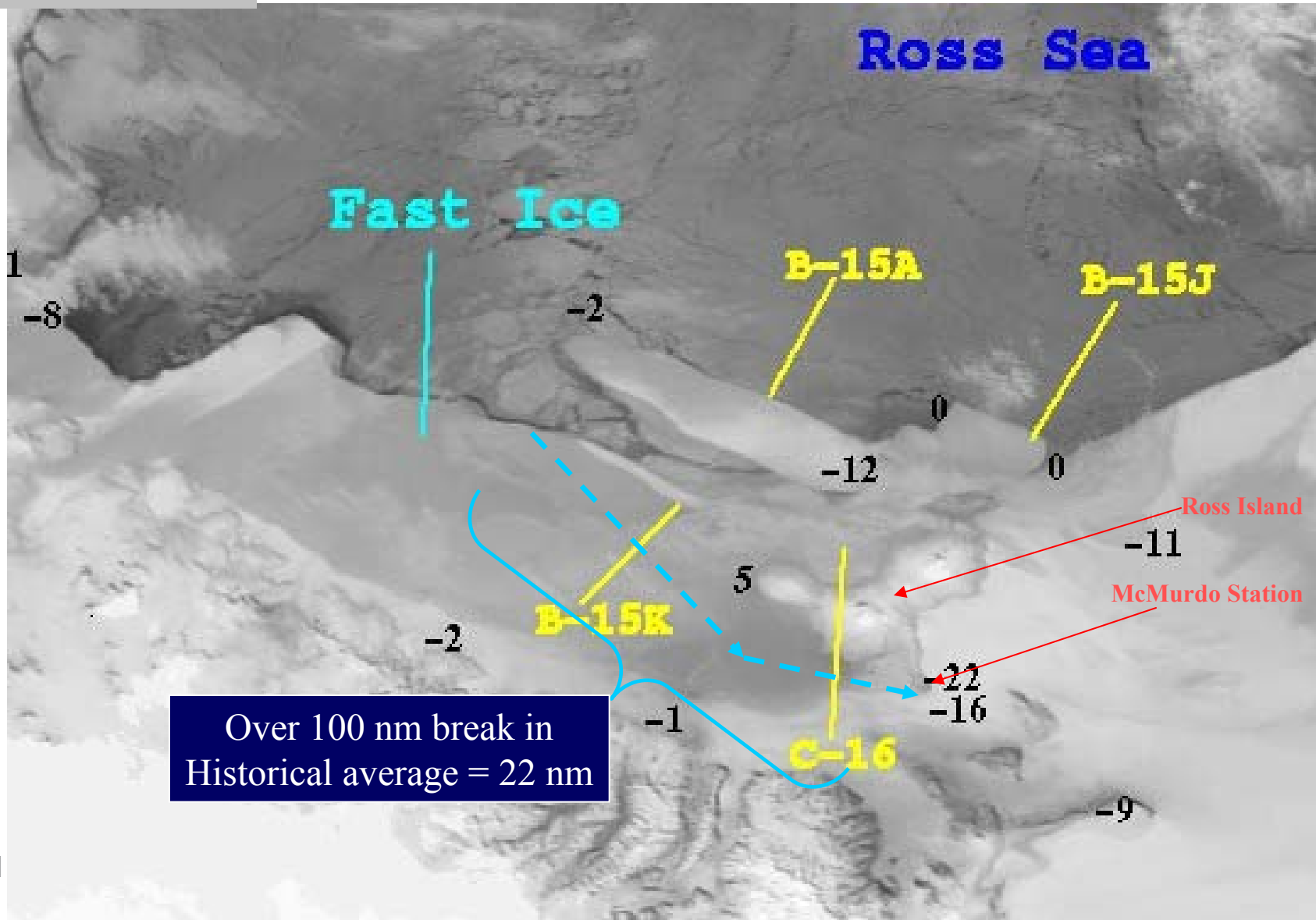


Reviewing satellite imagery, McMurdo Sound fast ice froze solid on or about 13 July, 2004

- DF Mission Severity Risk Factors:
1. Extent of fast ice\*
  2. Thickness/age of fast ice\*
  3. Snowfall\*
  4. Reliability of polar icebreakers
  5. Number of polar icebreakers
  6. Wind\*

Yellow – 2000 fast ice edge – DF01  
Purple – 2001 fast ice edge – DF02  
Blue – 2002 fast ice edge – DF03  
Green – 2003 fast ice edge – DF04  
Red – 2004 fast ice edge – DF05

27 Oct 04



# USCG Program Concerns

- Management of polar icebreaker program
- Full funding of the polar icebreaker program
  - Sustainment of Antarctic mission
  - Congressional reductions
  - OMB FY06 decisions by Dec '04?
- National policy update:
  - OSTP involvement
  - Need funding policy that will support national polar icebreaker policy



# USCG Program Changes?

- Full funding of the polar icebreaker program
  - Higher reimbursement costs?
  - Impact on HEALY AEWS05 schedule?
- National policy update:
  - Booz Allen Study results – Dec '04
  - National Academies CG polar icebreaker study
  - DOD polar icebreaker policy statement by Dec '04
  - Overall program management changes?

