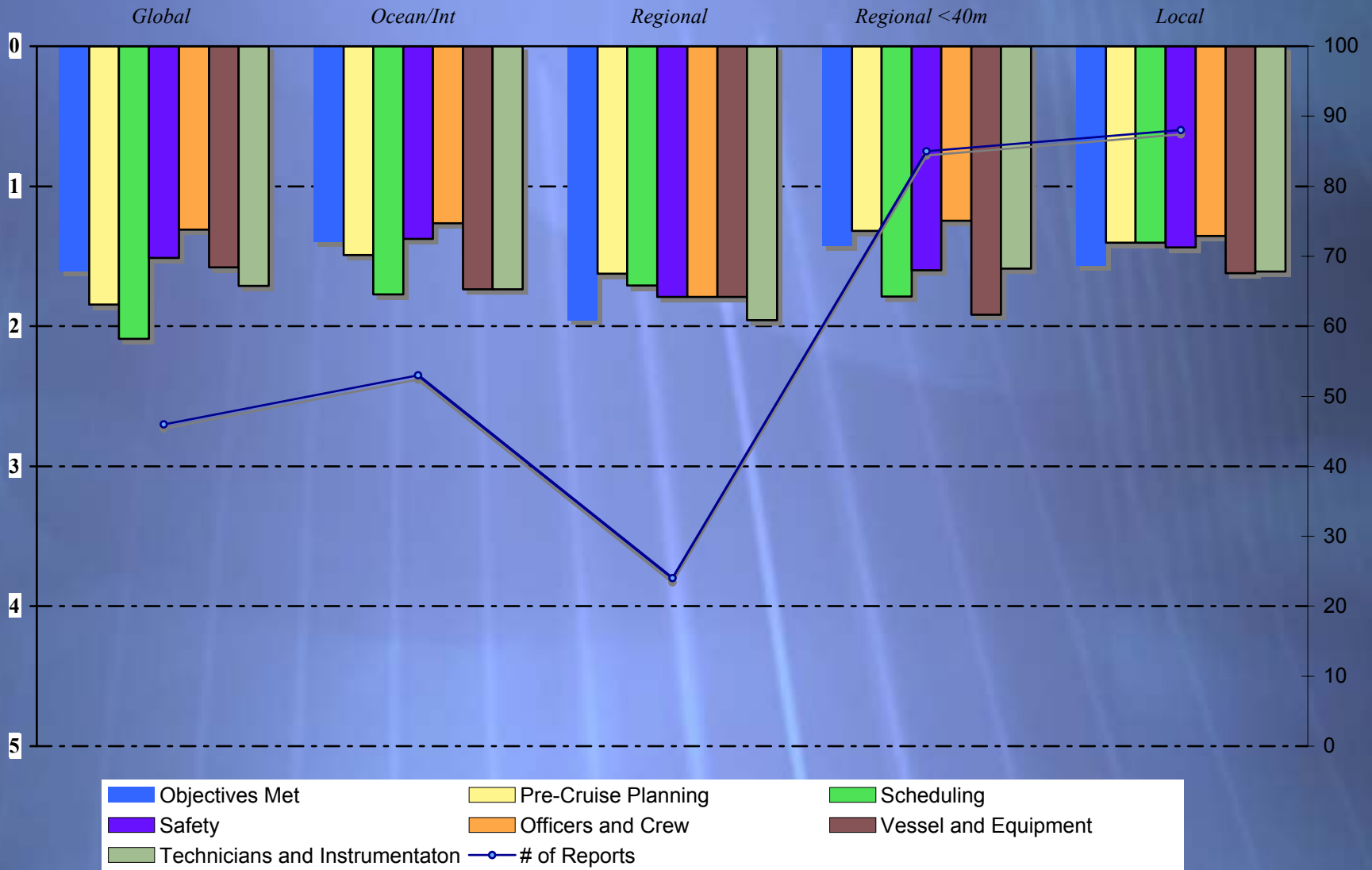
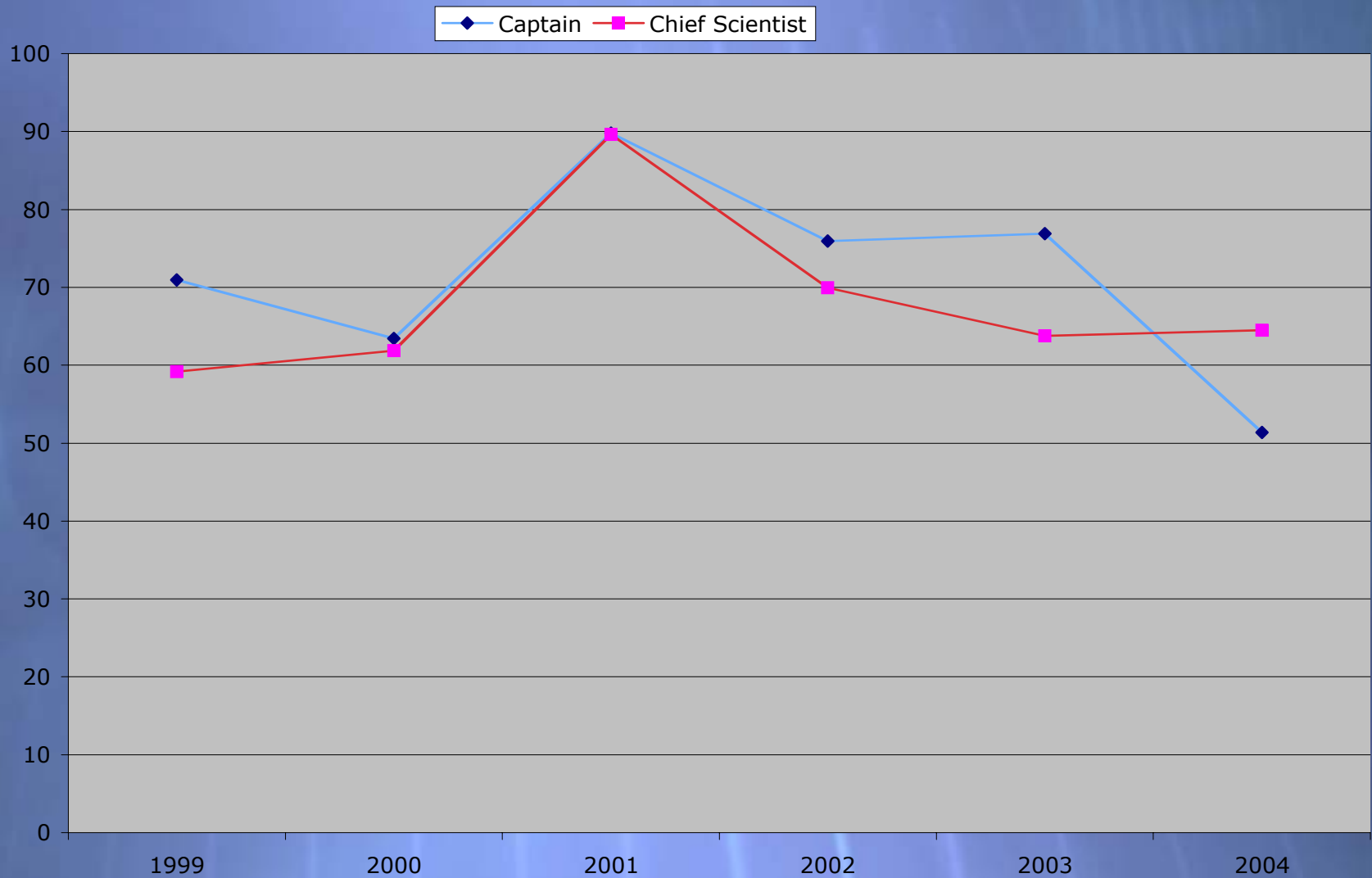


Post Cruise Assessments

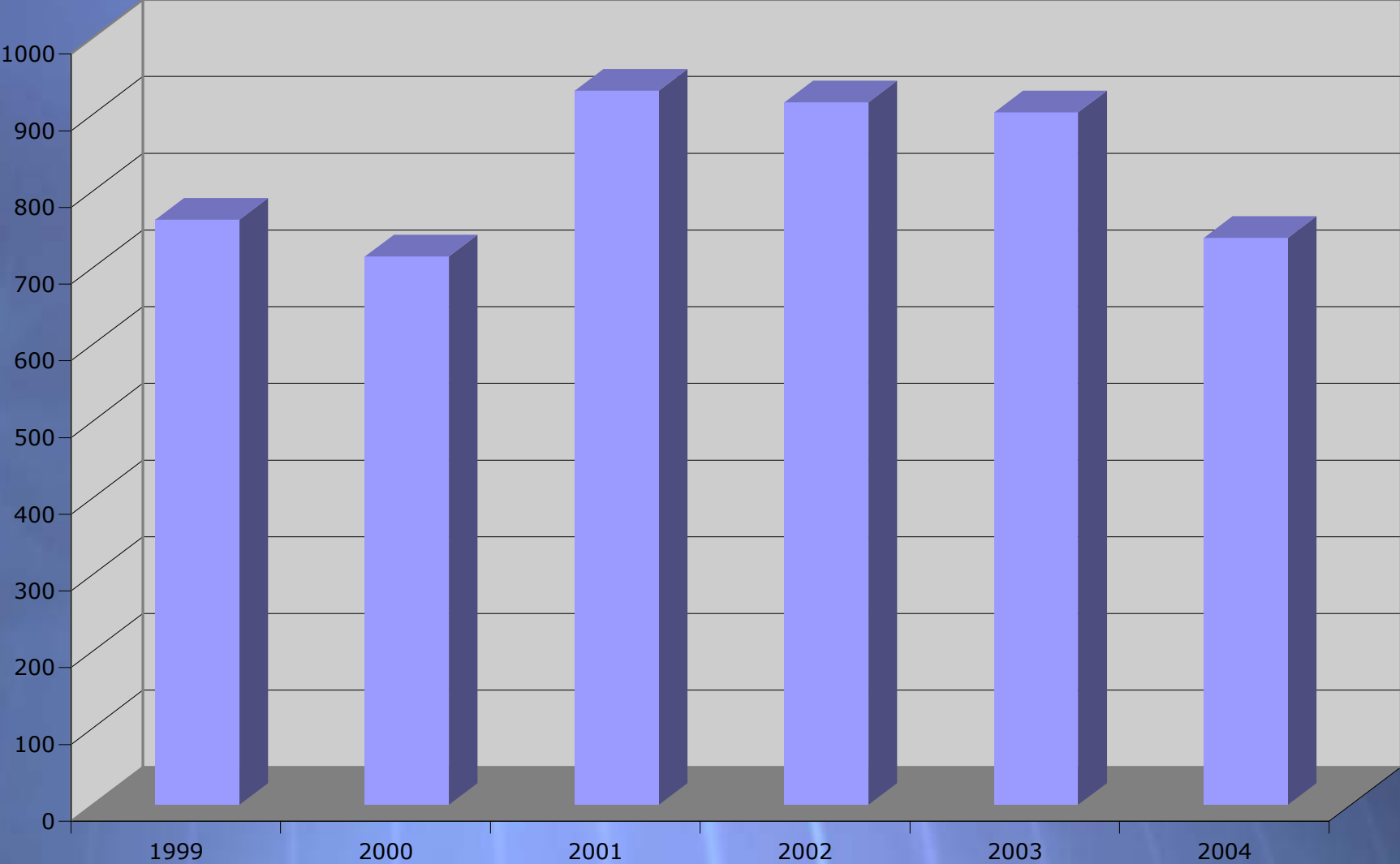
2004 Fleet Wide PCAR averages by Class of Vessel



Percent Return for Post Cruise Assessments 1999 - 2004 (thru October)



Total Number of PCAR per year



Safety Statistics

2004 RVOC Safety Statistic Reports Received

Click on the link below to complete reports

<http://www.unols.org/safetyrept.html>

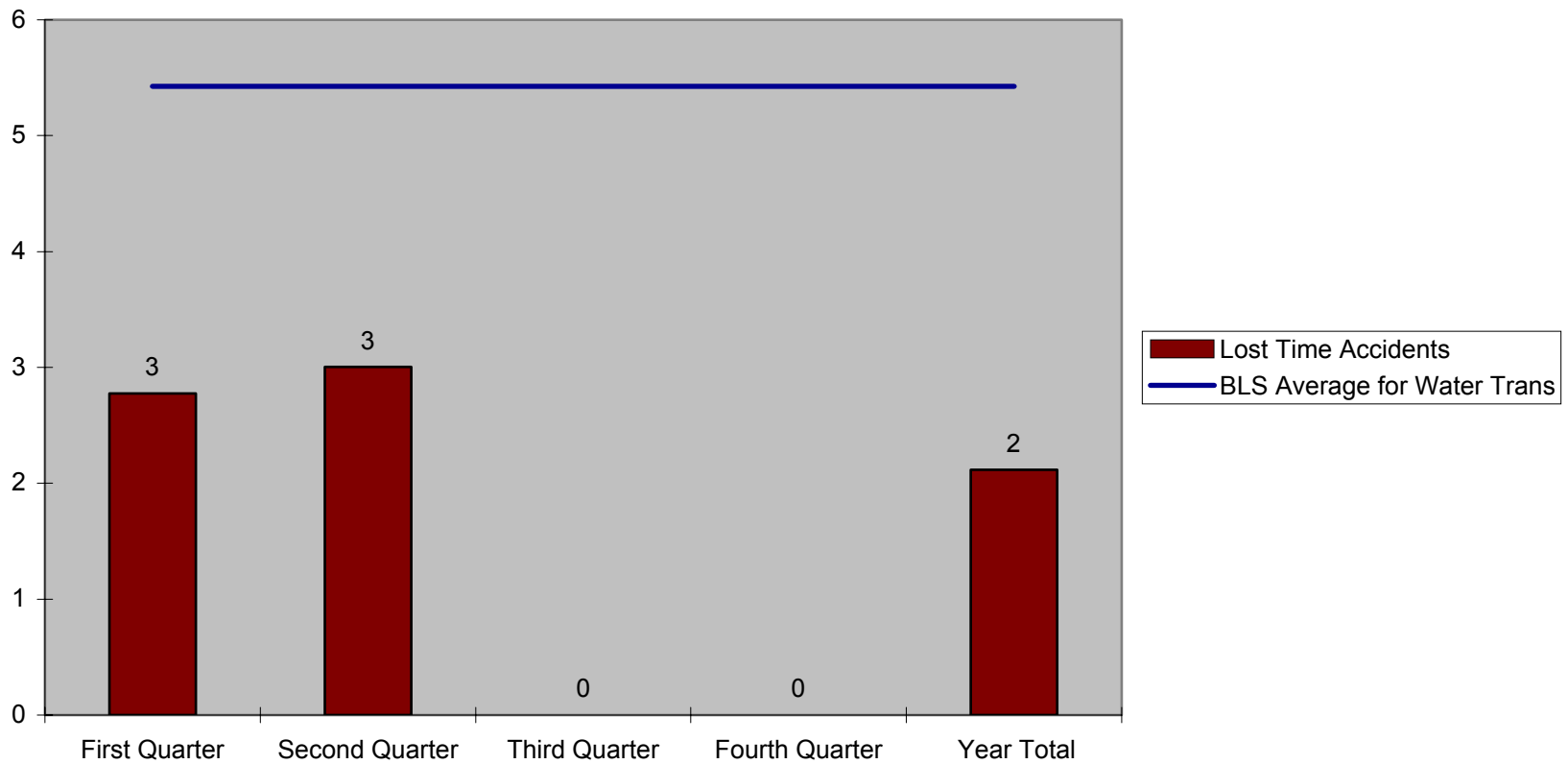
| Quarter Reported | 2004-1st | 2004-2nd | 2004-3rd | 2004-4th |
|-----------------------------|------------|------------|------------|-----------|
| Alpha Helix | X | | X | |
| Atlantis | X | X | X | |
| Blue Heron | X | X | | |
| Cape Hatteras | X | | | |
| Cape Henlopen | X | X | | |
| Clifford A. Barnes | X | X | X | |
| Endeavor | | X | | |
| Gyre | X | X | X | |
| Kilo Moana | X | X | | |
| Knorr | X | X | X | |
| Longhorn | | X | | |
| Maurice Ewing | X | X | | |
| Melville | X | X | X | |
| New Horizon | X | X | X | |
| Oceanus | X | X | X | |
| Pelican | | X | X | |
| Point Sur | X | X | | |
| Robert Gordon Sproul | X | X | X | |
| Roger Revelle | X | X | X | |
| Savannah | | | | |
| Seward Johnson | X | X | X | |
| Seward Johnson II | X | X | X | |
| Thomas G. Thompson | X | X | X | |
| Urraca | X | X | X | |
| Walton Smith | X | X | X | |
| Weatherbird II | | X | | |
| Wecoma | X | X | | |
| Total Ships Reported | 22 | 24 | 16 | 0 |
| Total Ships | 27 | 27 | 27 | 27 |
| % of Ships Reported | 81% | 89% | 59% | 0% |

| | 2004 First Quarter | | 2004 Second Quarter | | 2004 Third Quarter | | 2004 Totals | |
|------------------------------|--------------------|-------------------|---------------------|-------------------|--------------------|-------------------|----------------|-------------------|
| | number | percent | number | percent | number | percent | number | percent |
| Ships Reported: | 22.00 | 81% | 24 | 89% | 16 | 59% | 16 | 57% |
| | | | | | | | Avg. | Avg. |
| | Reported | Per 200,000 Hours | Reported | Per 200,000 Hours | Reported | Per 200,000 Hours | Reported | Per 200,000 Hours |
| AT SEA Accident Rates | | | | | | | | |
| Crew Days at Sea | 12,191 | | 18,001 | | 12,677 | | 42,869 | |
| Crew Hours at sea (x12): | 146,292 | | 216,012 | | 152,124 | | 514,428 | |
| Total Accidents | 8 | 11 | 12 | 11 | 6 | 8 | 26 | 10 |
| Lost Time Accidents | 2 | 3 | 4 | 4 | 0 | 0 | 6 | 2 |
| Lost Days | 65 | 89 | 74 | 69 | 0 | 0 | 139 | 54 |
| | | | | | | | | |
| IN PORT Accident Rate | | | | | | | | |
| Crew Days in Port | 8,759 | | 6,301 | | 3,260 | | 18,320 | |
| Crew Hours in Port (x8) | 70,072 | | 50,408 | | 26,080 | | 146,560 | |
| Total Accidents | 3 | 9 | 3 | 12 | 0 | 0 | 6 | 8 |
| Lost Time Accidents | 1 | 3 | 0 | 0 | 0 | 0 | 1 | 1 |
| Lost Days | 3 | 9 | 0 | 0 | 0 | 0 | 3 | 4 |
| | | | | | | | | |
| TOTAL ACCIDENT RATES | | | | | | | | |
| Total Crew Days | 20,950 | | 24,302 | | 15,937 | | 61,189 | |
| Total Crew Hours | 216,364 | | 266,420 | | 178,204 | | 660,988 | |
| Total Accidents | 11 | 10 | 15 | 11 | 6 | 7 | 32 | 10 |
| Lost Time Accidents | 3 | 3 | 4 | 3 | 0 | 0 | 7 | 2 |
| Lost Days | 68 | 63 | 74 | 56 | 0 | 0 | 142 | 43 |

(Number of injuries and illnesses X 200,000)/Employee hours worked = Incidence Rate

Note: The 200,000 in the formula represents the equivalent of 100 employees working 40 hours per week for 50 weeks per year, and provides the standard base for incidence rates.

**UNOLS 2004
Lost Time Accidents
Per 200,000 hours or 100 F-T Employees**



**UNOLS 2001
Total Lost Days
Per 200,000 hours or 100 F-T Employees**

