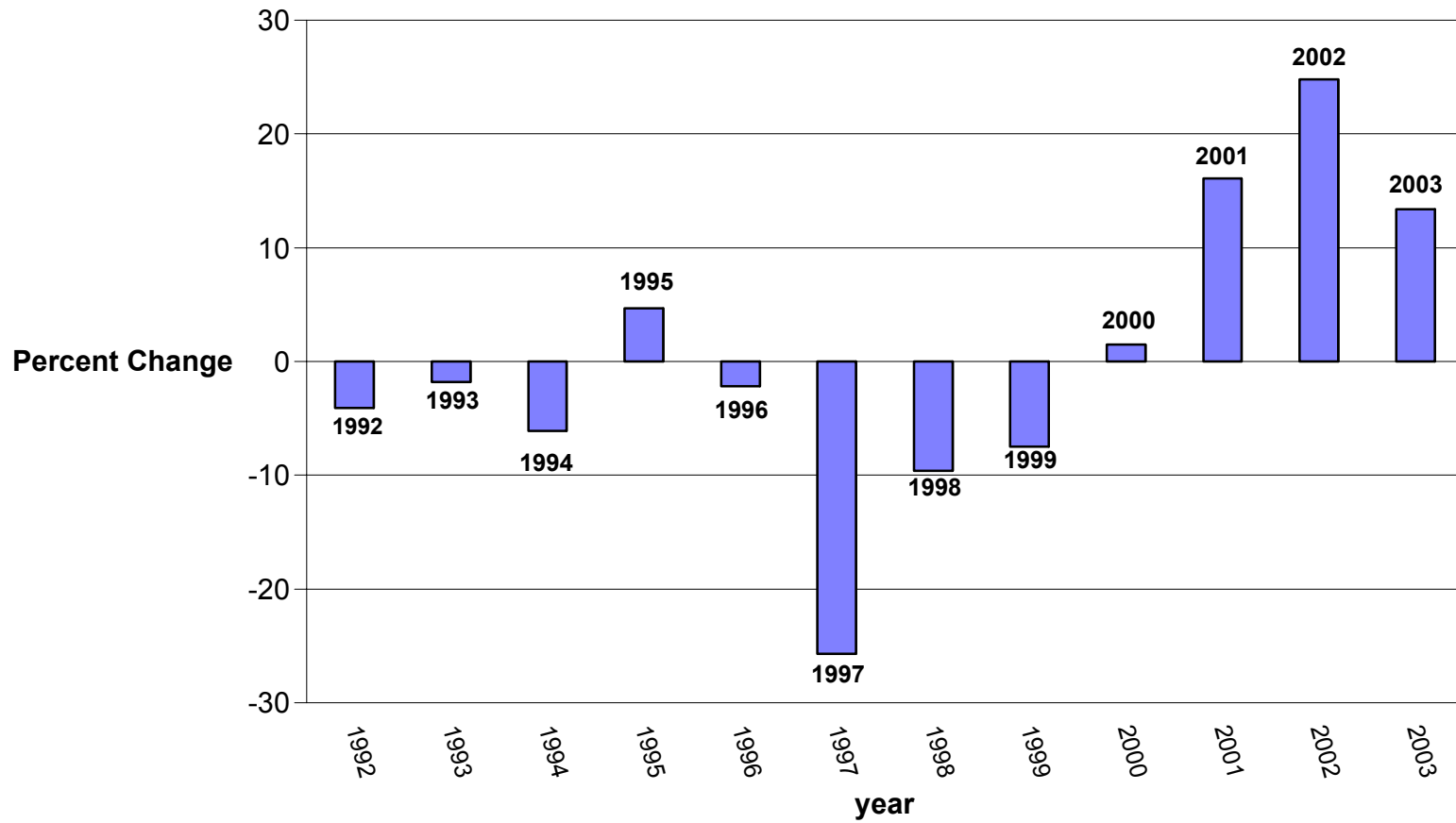


pie data

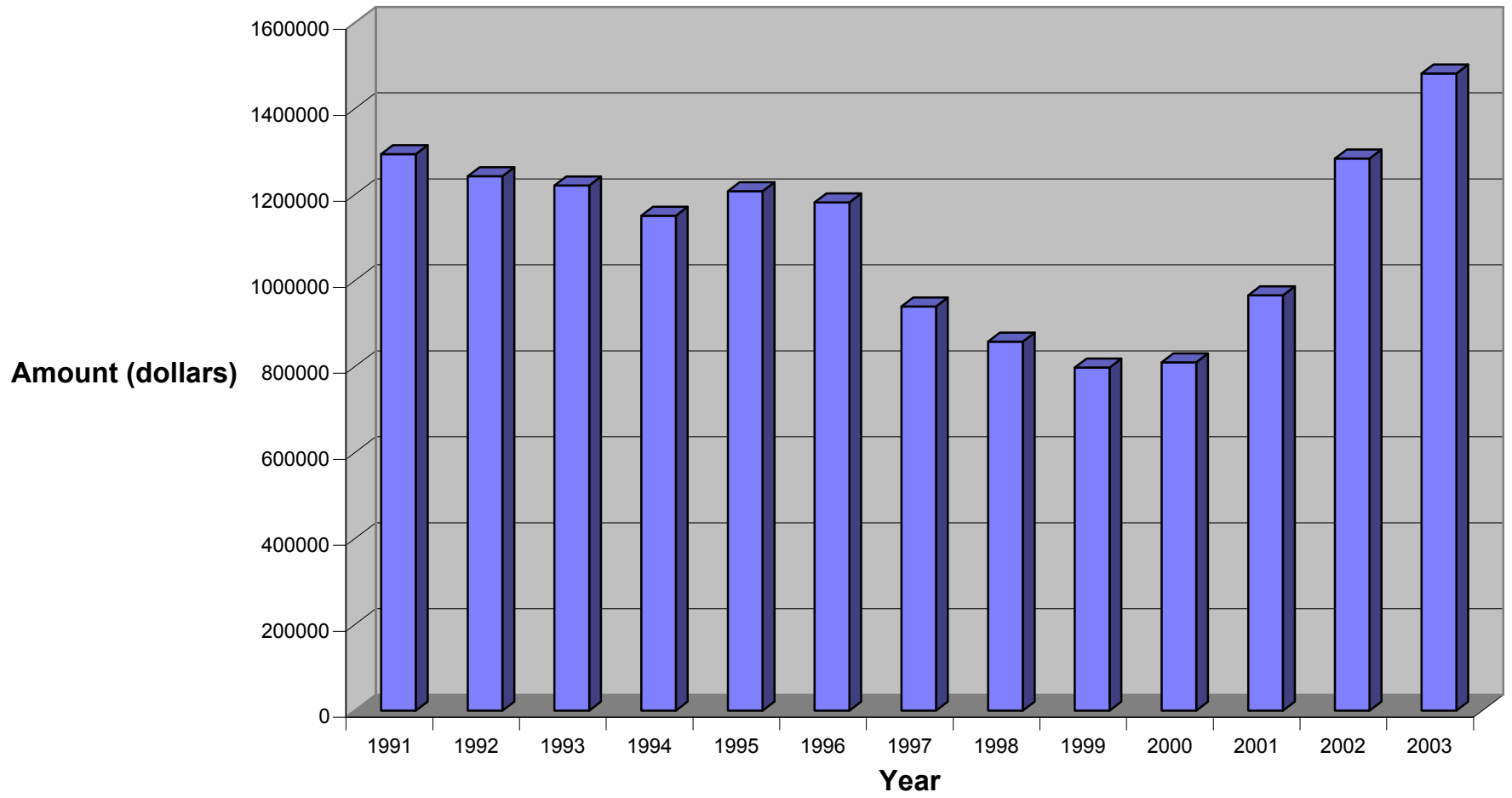
2003 Insurance Exp. by Vessel (\$0 removed to avoid confusion)

Alaska/Alpha Helix	10000
Bermuda/Weatherbird	51000
California/Sproul	36000
California/New Horizon	50000
California/Melville	67000
California/Revelle	77000
Columbia/Ewing	155000
Delaware/Cape Henlopen	32000
Duke/Cape Hatteras	47000
HBOI/Seward Johnson	27000
HBOI/Seward Johnson II	20000
Hawaii/Ka'imikai-O-Kanaloa	75000
Hawaii/Kilo Moana	125000
Miami/Walton Smith	57000
Minnesota/Blue Heron	20000
Oregon/Wecoma	3000
Rhode Island/Endevour	75000
Skidaway/Blue Fin/Savannah	34000
San Jose State/Point Sur	37000
Smithsonian/Urruca	2000
Washington/Barnes	9000
Washington/Thompson	154000
WHOI/Atlantis	118000
WHOI/Knorr	102000
WHOI/Oceanus	62000
WHOI/Alvin	37000

Vessel Expenditure Percentage Change per Year 1992-2003



Total Expenditures per Year

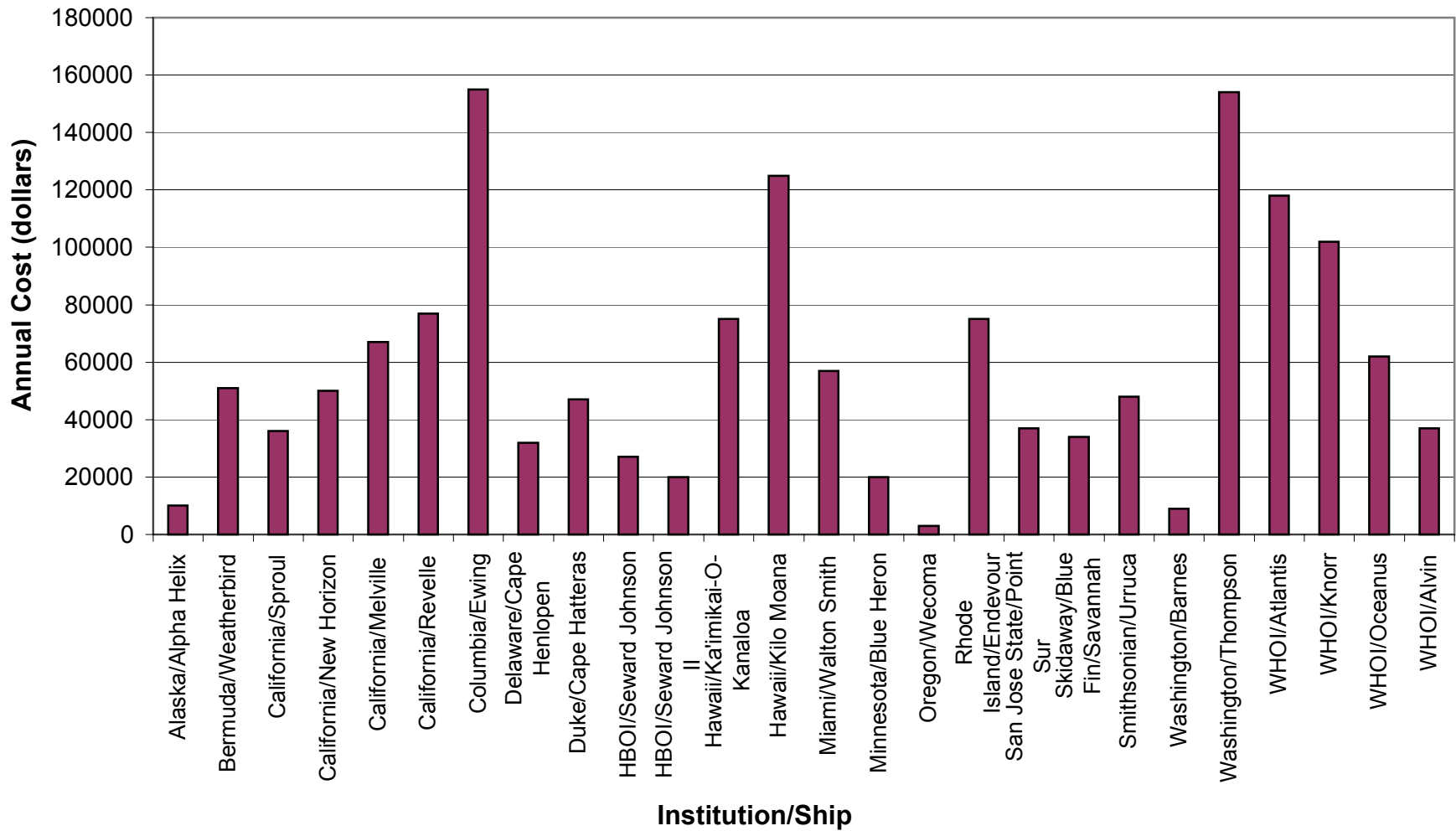


Insurance Expenditures

1991-2003

Institutions/Ship	1991	1992	1993	1994	1995	1996	1997	1998	1999	2000	2001	2002	2003	totals by ship
Alaska/Alpha Helix	60	60	60	75	78	77	69	36	34	34	37	50	10	680
Bermuda/Weatherbird	51	50	52	32	33	31	31	30	31	30	30	41	51	493
California/Sproul	35	33	35	20	21	20	17	15	13	18	27	30	36	320
California/New Horizon	74	65	55	24	22	22	19	16	14	19	30	46	50	456
California/Melville	0	42	53	54	51	49	40	38	34	32	56	57	67	573
California/Revelle	0	0	0	0	0	14	48	48	43	33	63	65	77	391
Columbia/Ewing	240	309	234	131	161	147	88	77	85	74	85	106	155	1892
Delaware/Cape Henlopen	47	47	47	36	27	27	25	26	26	22	22	26	32	410
Duke/Cape Hatteras	60	35	46	63	83	74	52	49	49	32	30	32	47	652
HBOI/Seward Johnson	64	79	79	62	86	97	10	16	16	19	22	23	27	600
HBOI/Seward Johnson II	50	63	59	62	49	57	7	11	11	9	19	17	20	434
HBOI/Sea Diver	0	0	0	43	16	19	4	5	5	5	5	0	0	102
Hawaii/Ka'imikai-O-Kanaloa	---	---	---	---	---	---	---	---	---	47	48	68	75	238
Hawaii/Kilo Moana	---	---	---	---	---	---	---	---	---	---	---	109	125	109
Louisiana/Pelican	100	0	0	0	11	25	0	0	0	0	0	0	0	136
Miami/Walton Smith	118	21	21	21	11	4	10	13	31	46	50	47	57	450
Minnesota/Blue Heron	0	0	0	0	0	0	0	8	8	8	17	0	20	61
Oregon/Wecoma	45	25	35	45	40	0	0	0	2	0	0	17	3	212
Rhode Island/Endevour	108	123	42	86	65	61	77	36	70	54	59	71	75	927
San Jose State/Point Sur	54	54	43	45	45	38	48	43	40	31	31	38	37	547
Skidaway/Blue Fin/Savannah	12	12	12	12	0	0	0	0	0	0	0	0	34	82
Smithsonian/Urruca	0	0	0	0	10	10	2	2	3	2	2	2	2	33
Texas A&M/Gyre	12	6	45	45	73	76	21	39	20	20	0	0	0	357
Texas/Longhorn	12	6	45	45	73	76	0	0	0	0	0	40	0	297
Washington/Barnes	22	18	19	19	15	12	9	6	5	6	7	7	9	154
Washington/Thompson	58	116	126	120	123	118	121	121	83	81	120	133	154	1474
WHOI/Atlantis	0	0	0	0	0	0	45	67	69	64	60	95	118	518
WHOI/Knorr	35	35	55	54	54	64	93	66	35	72	68	87	102	820
WHOI/Oceanus	20	25	39	39	40	36	64	38	40	25	39	50	62	517
WHOI/Alvin	17	19	19	18	21	28	40	52	31	27	39	27	37	338
Total Insurance Expenditures	1294	1243	1221	1151	1208	1182	940	858	798	810	966	1284	1482	14273
Year		1992	1993	1994	1995	1996	1997	1998	1999	2000	2001	2002	2003	
Percent Change in Expend.		-4.1	-1.8	-6.1	4.7	-2.2	-25.7	-9.6	-7.5	1.5	16.1	24.8	13.4	
(Percent change in insurance costs when compared to the previous year)														

Insurance Expenditures By Ship, 2003

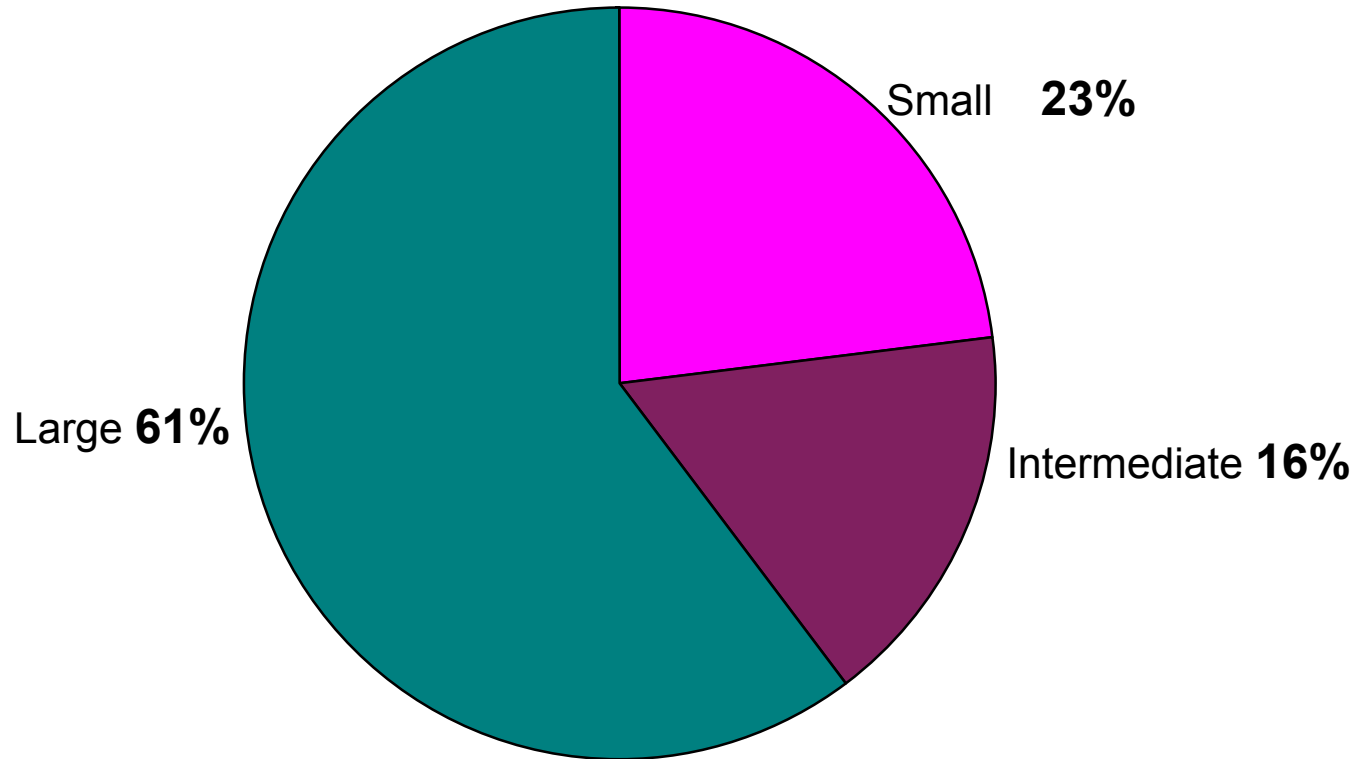


data for chart

Institutions/Ship	
Alaska/Alpha Helix	10000
Bermuda/Weatherbird	51000
California/Sproul	36000
California/New Horizon	50000
California/Melville	67000
California/Revelle	77000
Columbia/Ewing	155000
Delaware/Cape Henlopen	32000
Duke/Cape Hatteras	47000
HBOI/Seward Johnson	27000
HBOI/Seward Johnson II	20000
Hawaii/Ka'imikai-O-Kanaloa	75000
Hawaii/Kilo Moana	125000
Miami/Walton Smith	57000
Minnesota/Blue Heron	20000
Oregon/Wecoma	3000
Rhode Island/Endevour	75000
San Jose State/Point Sur	37000
Skidaway/Blue Fin/Savannah	34000
Smithsonian/Urruca	48000
Washington/Barnes	9000
Washington/Thompson	154000
WHOI/Atlantis	118000
WHOI/Knorr	102000
WHOI/Oceanus	62000
WHOI/Alvin	37000

Total Expenditures per year	1991	1294000
	1992	1243000
	1993	1221000
	1994	1151000
	1995	1208000
	1996	1182000
	1997	940000
	1998	858000
	1999	798000
	2000	810000
	2001	966000
	2002	1284000
	2003	1482000

Insurance Expenditures By Ship Class, 2003



Insurance Expenditures 1991-2004 by Ship Size Classes

Small Class Ships

Institutions/Ship	1991	1992	1993	1994	1995	1996	1997	1998	1999	2000	2001	2002	2004
Alaska/Alpha Helix	60	60	60	75	78	77	69	36	34	34	37	50	10
Bermuda/ Weatherbird	51	50	52	32	33	31	31	30	31	30	30	41	51
California/ Sproul	35	33	35	20	21	20	17	15	13	18	27	30	36
Delaware/Cape Henlopen	47	47	47	36	27	27	25	26	26	22	22	26	32
Duke/Cape Hatteras	60	35	46	63	83	74	52	49	49	32	30	32	47
HBOI/Sea Diver	0	0	0	43	16	19	4	5	5	5	5	0	0
Louisiana/ Pelican	100	0	0	0	11	25	0	0	0	0	0	0	0
Miami/Walton Smith	118	21	21	21	11	4	10	13	31	46	50	47	57
Minnesota/Blue Heron	0	0	0	0	0	0	0	8	8	8	17	0	20
San Jose State/ Point Sur	54	54	43	45	45	38	48	43	40	31	31	38	37
Skidaway/Blue Fin/Savannah	12	12	12	12	0	0	0	0	0	0	0	0	34
Smithsonian/ Urruca	0	0	0	0	10	10	2	2	3	2	2	2	2
Texas/Longhorn	0	0	0	0	0	0	0	0	0	0	0	40	0
Washington/ Barnes	22	18	19	19	15	12	9	6	5	6	7	7	9
Small Class Totals (in thousands)	559	330	335	366	350	337	267	233	245	234	258	313	335
Small Class Totals (dollars)	559000	330000	335000	366000	350000	337000	267000	233000	245000	234000	258000	313000	335000

Intermediate Class Ships

Institutions/Ship	1991	1992	1993	1994	1995	1996	1997	1998	1999	2000	2001	2002	2004
California/New Horizon	74	65	55	24	22	22	19	16	14	19	30	46	50
HBOI/Seward Johnson	64	79	79	62	86	97	10	16	16	19	22	23	27
HBOI/Seward Johnson II	50	63	59	62	49	57	7	11	11	9	19	17	20
Oregon/Wecoma	45	25	35	45	40	0	0	0	2	0	0	17	3
Rhode Island/ Endeavor	108	123	42	86	65	61	77	36	70	54	59	71	75
Texas A&M/Gyre	12	6	45	45	73	76	21	39	20	20	0	0	0
WHOI/Oceanus	20	25	39	39	40	36	64	38	40	25	39	50	62
Intermediate Class Totals (in thousands)	373	386	354	363	375	349	198	156	173	146	169	224	237
Intermediate Class Totals (dollars)	373000	386000	354000	363000	375000	349000	198000	156000	173000	146000	169000	224000	237000

Large Class Vessels

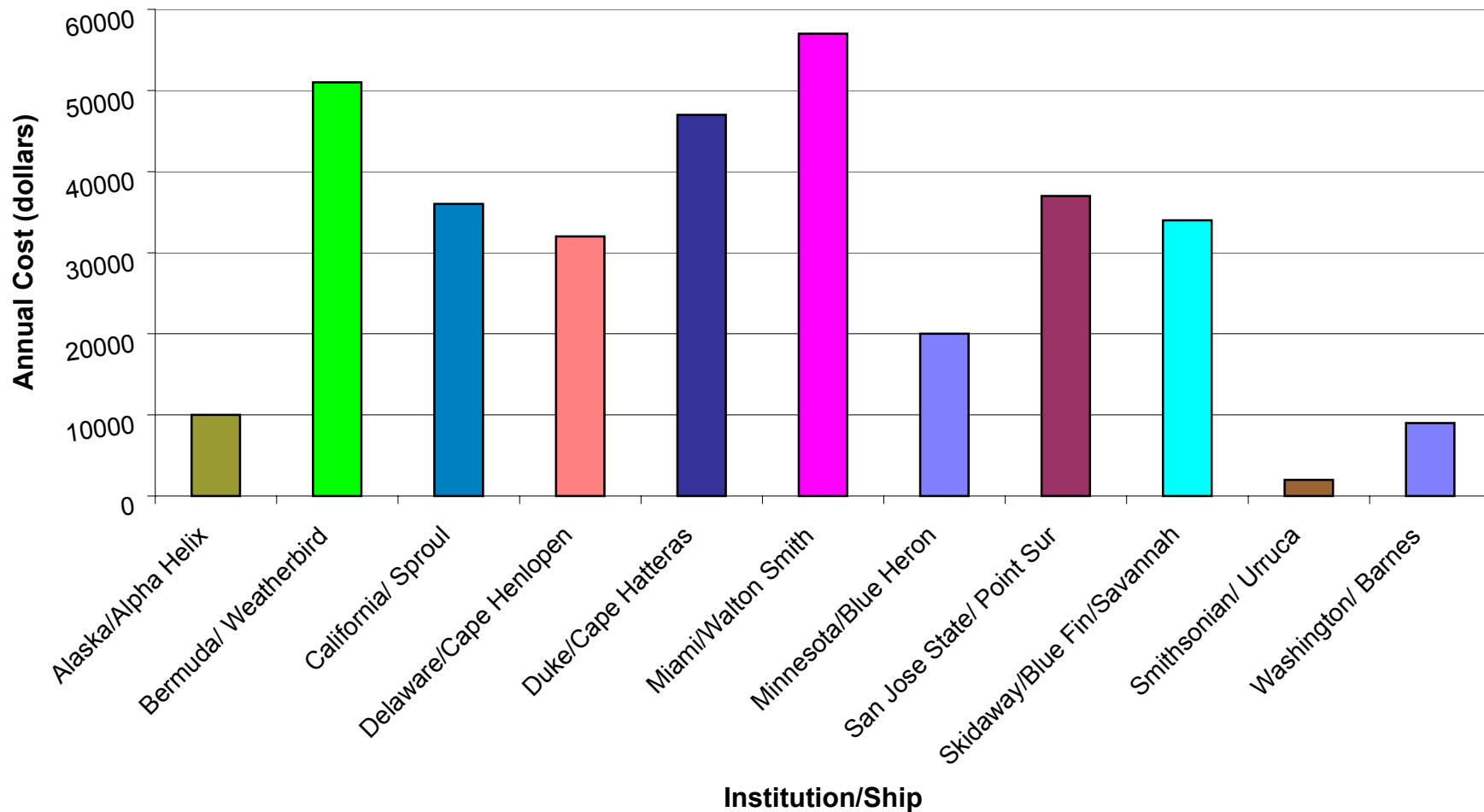
Institutions/Ship	1991	1992	1993	1994	1995	1996	1997	1998	1999	2000	2001	2002	2004
California/Melville	0	42	53	54	51	49	40	38	34	32	56	57	67
California/Revelle	0	0	0	0	0	14	48	48	43	33	63	65	77
Columbia/Ewing	240	309	234	131	161	147	88	77	85	74	85	106	155
Hawaii/Ka'imikai-O-Kanaloa	---	---	---	---	---	---	---	---	---	47	48	68	75
Hawaii/Kilo Moana	---	---	---	---	---	---	---	---	---	---	---	109	125
Washington/ Thompson	58	116	126	120	123	118	121	121	83	81	120	133	154
WHOI/Atlantis	0	0	0	0	0	0	45	67	69	64	60	95	118
WHOI/Knorr	35	35	55	54	54	64	93	66	35	72	68	87	102
Large Class Totals (in thousands)	333	502	468	359	389	392	435	417	349	403	500	720	873
Large Class Totals (dollars)	333000	502000	468000	359000	389000	392000	435000	417000	349000	403000	500000	720000	873000

Vessel Class Size

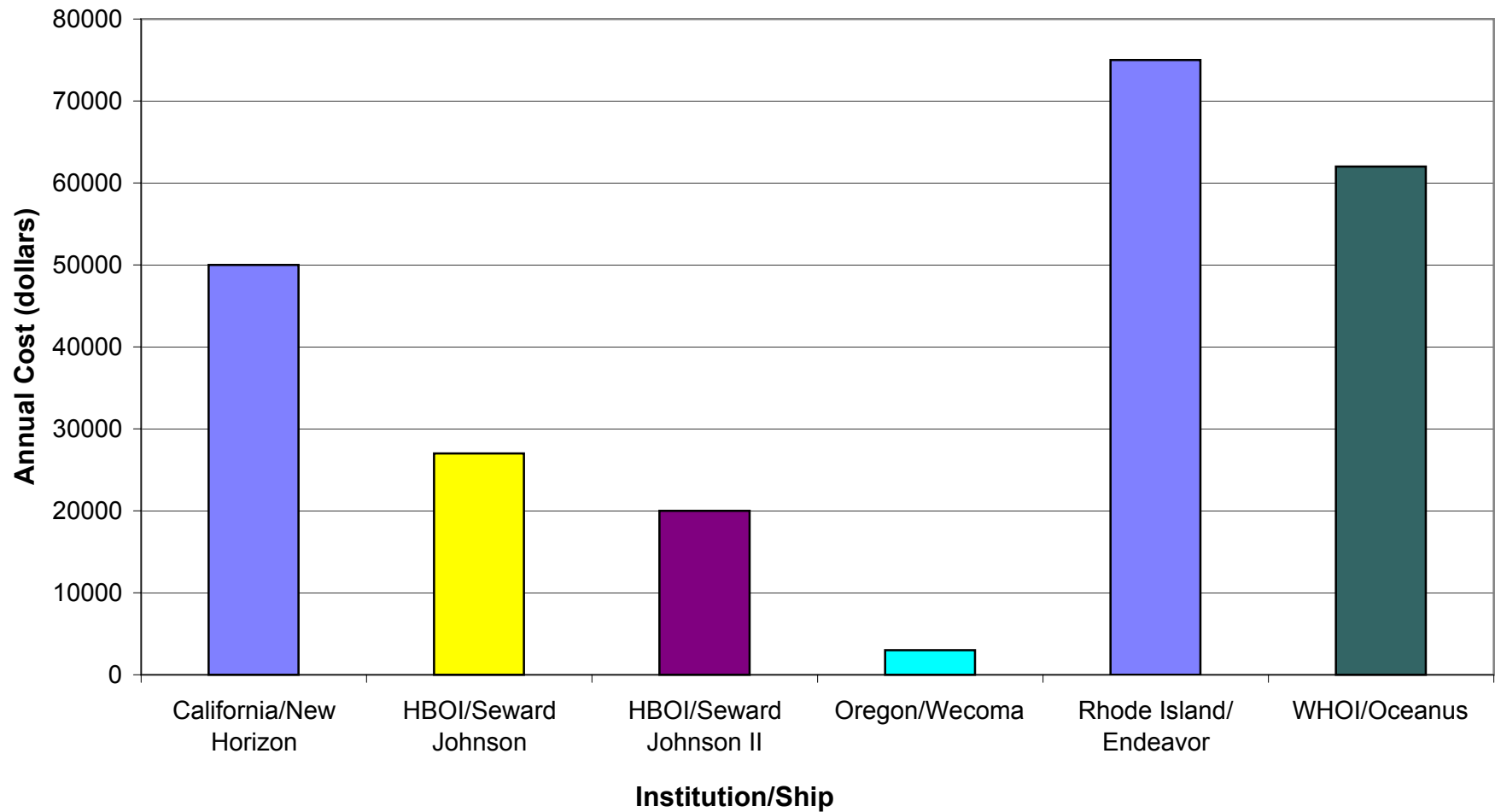
	1991	1992	1993	1994	1995	1996	1997	1998	1999	2000	2001	2002	2003
Small	559000	330000	335000	366000	350000	337000	267000	233000	245000	234000	258000	313000	335000
Intermediate	373000	386000	354000	363000	375000	349000	198000	156000	173000	146000	169000	224000	237000
Large	333000	502000	468000	359000	389000	392000	435000	417000	349000	403000	500000	720000	873000

	Small	Interm	Large
1991	559000	373000	333000
1992	330000	386000	502000
1993	335000	354000	468000
1994	366000	363000	359000
1995	350000	375000	389000
1996	337000	349000	392000
1997	267000	198000	435000
1998	233000	156000	417000
1999	245000	173000	349000
2000	234000	146000	403000
2001	258000	169000	500000
2002	313000	224000	720000
2003	335000	237000	873000

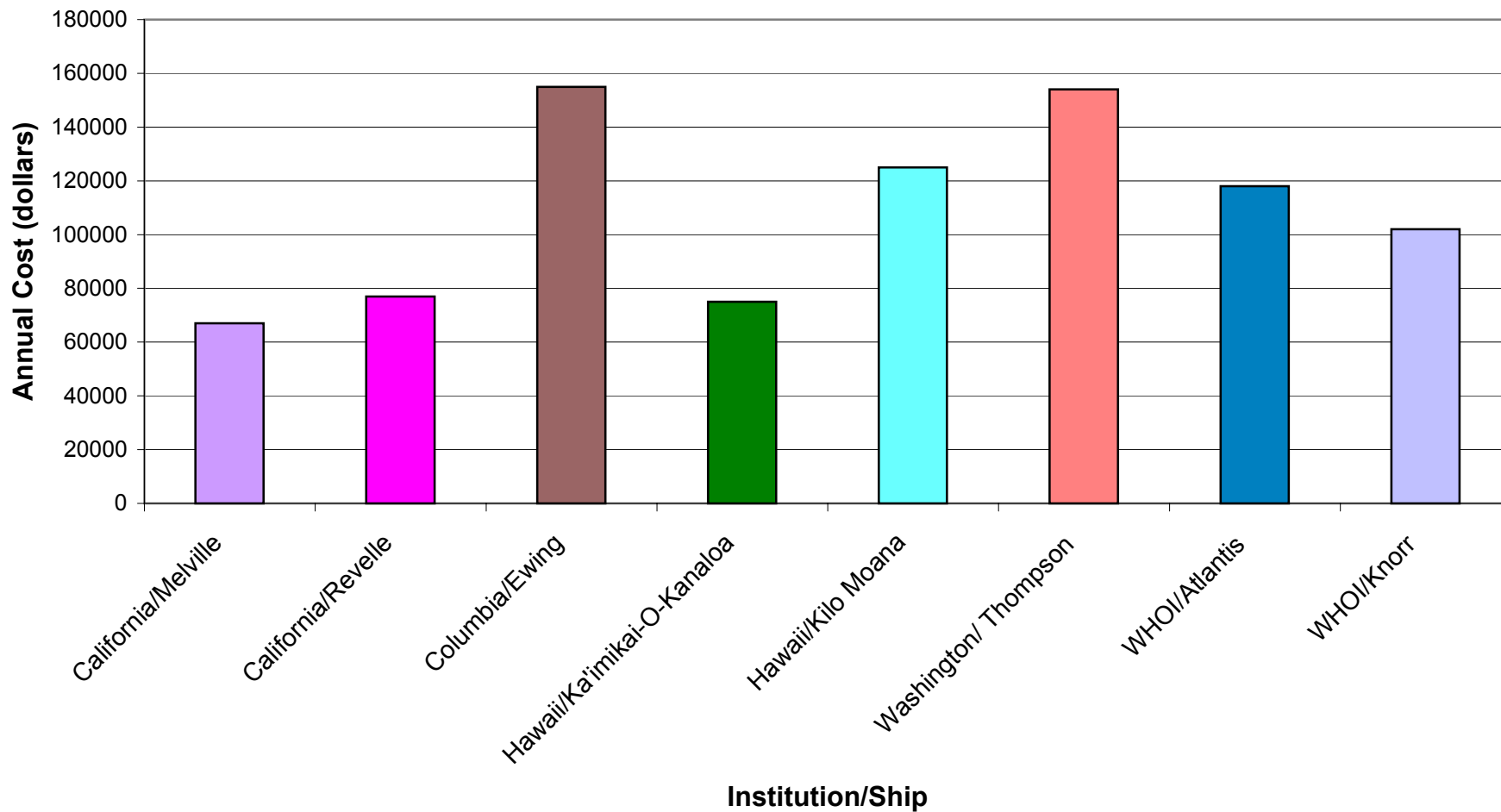
Institution/Ship Insurance Expenditures Small Class, 2003



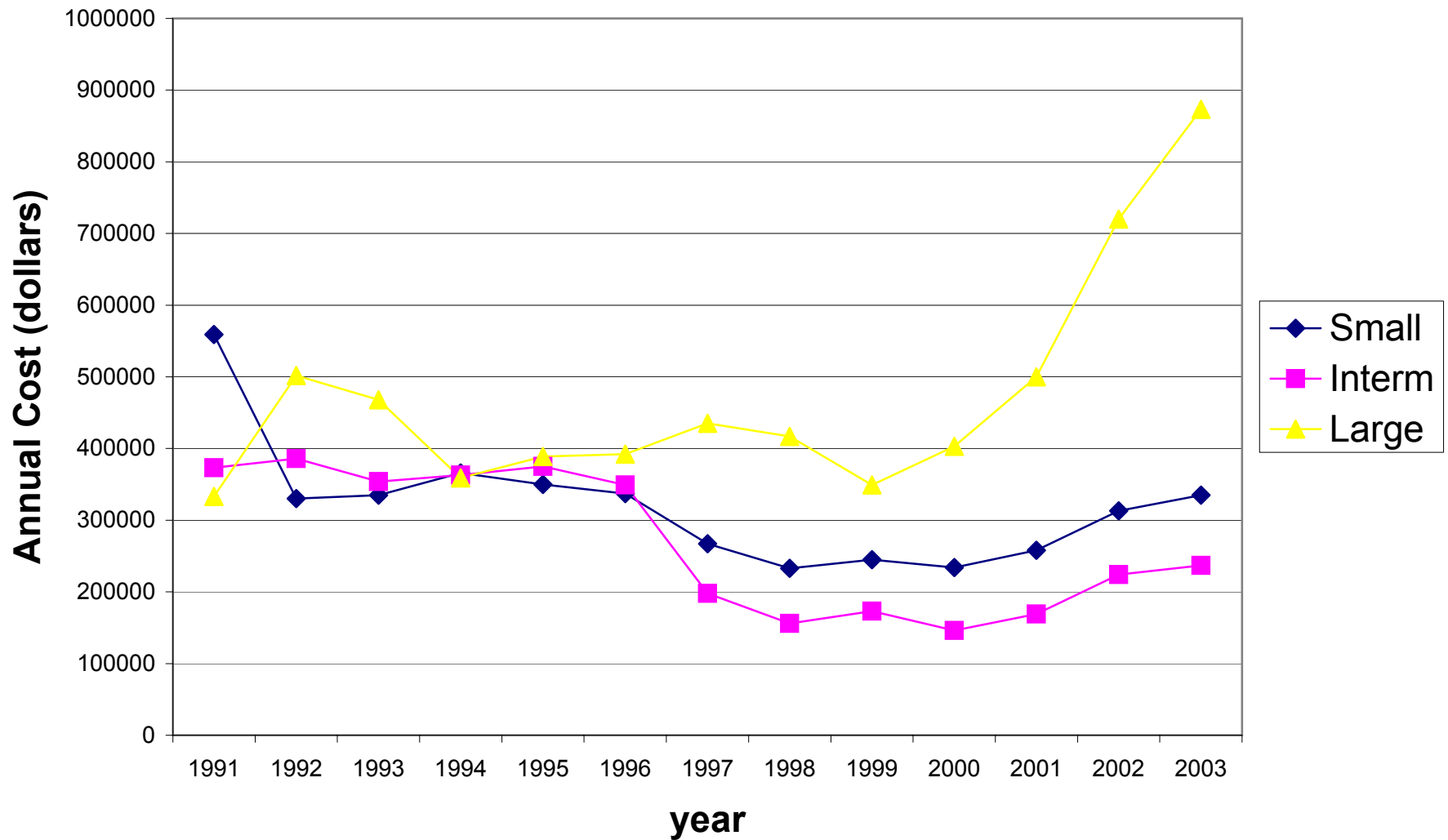
Institution/Ship Insurance Expenditures Intermediate Class, 2003



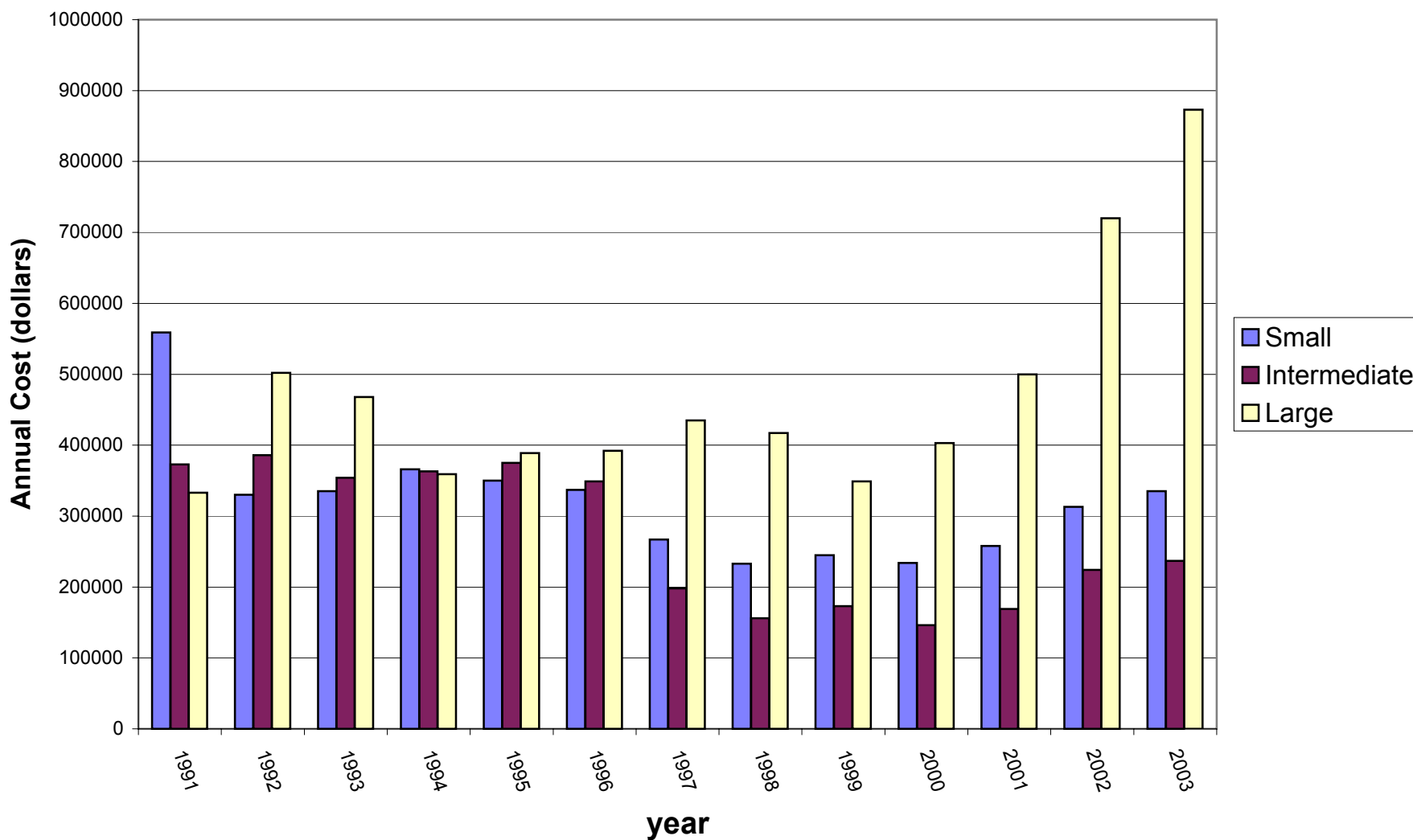
Institution/Ship Insurance Expenditures Large Class, 2003



Insurance Expenditures by Ship Class 1991-2003



Insurance Expenditures by Class, 1991-2003



Small Class Expenditures, 2003

Alaska/Alpha Helix	10000
Bermuda/ Weatherbird	51000
California/ Sproul	36000
Delaware/Cape Henlopen	32000
Duke/Cape Hatteras	47000
Miami/Walton Smith	57000
Minnesota/Blue Heron	20000
San Jose State/ Point Sur	37000
Skidaway/Blue Fin/Savannah	34000
Smithsonian/ Urruca	2000
Washington/ Barnes	9000

Intermediate Class Expenditures, 2003

California/New Horizon	50000
HBOI/Seward Johnson	27000
HBOI/Seward Johnson II	20000
Oregon/Wecoma	3000
Rhode Island/ Endeavor	75000
WHOI/Oceanus	62000

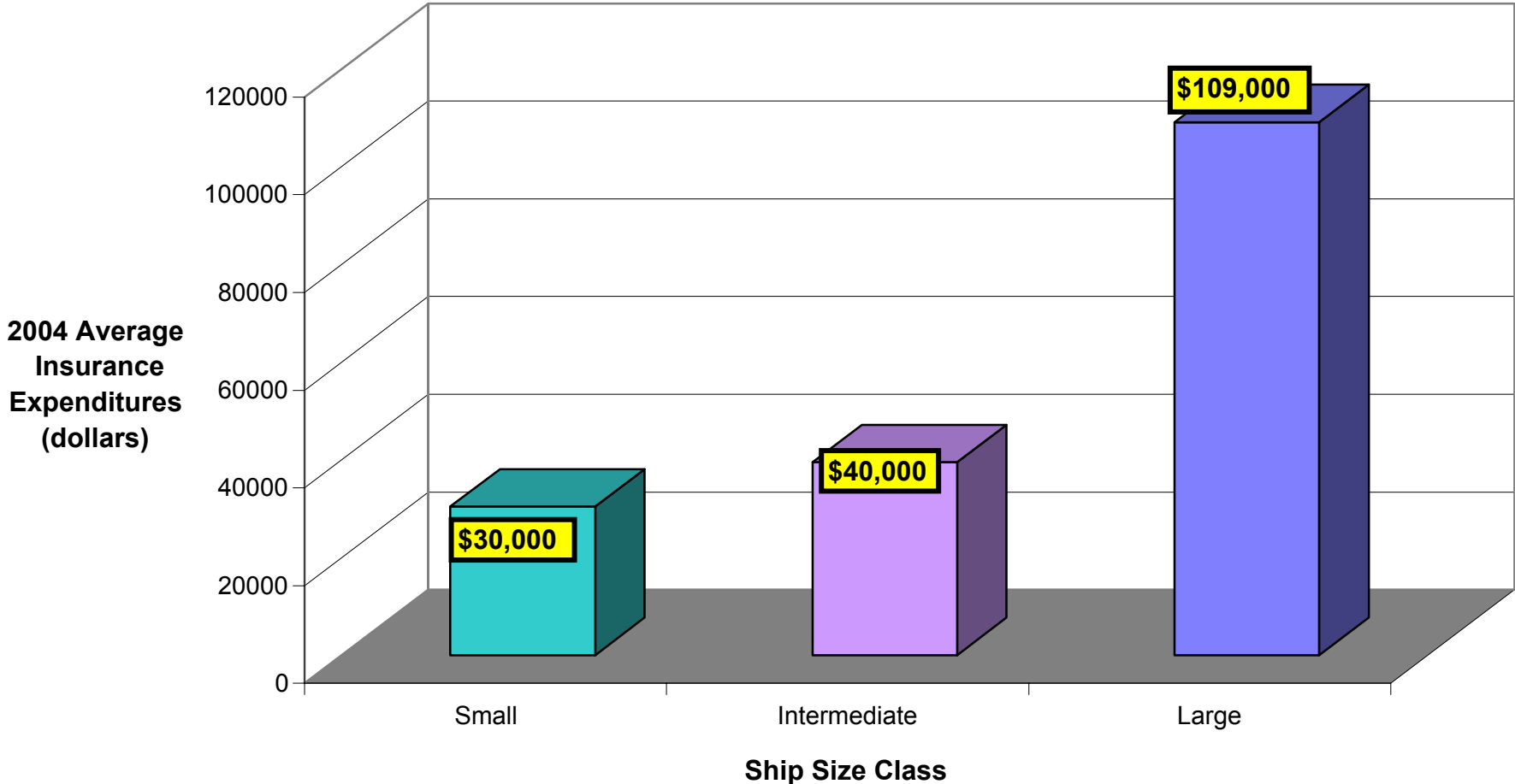
Large Class Expenditures, 2003

California/Melville	67000
California/Revelle	77000
Columbia/Ewing	155000
Hawaii/Ka'imikai-O-Kanaloa	75000
Hawaii/Kilo Moana	125000
Washington/ Thompson	154000
WHOI/Atlantis	118000
WHOI/Knorr	102000

Average Insurance Expenditures By Ship Size, 2003

Small	30455
Intermediate	39500
Large	109125

Average Insurance Expenditures By Ship Size Class, 2003



2003 Insurance Expenditures per Person					
	Exp per Person		Exp per Person	Expend.	Persons
Small	417	Alaska/Alpha Helix	417	10000	24
Small	2550	Bermuda/ Weatherbird	2550	51000	20
Small	2118	California/ Sproul	2118	36000	17
Small	1684	Delaware/Cape Henlopen	1684	32000	19
Small	2136	Duke/Cape Hatteras	2136	47000	22
Small	0	HBOI/Sea Diver	0	0	19
Small	0	Louisiana/ Pelican	0	0	20
Small	2850	Miami/Walton Smith	2850	57000	20
Small	0	Minnesota/Blue Heron	0	0	9
Small	1762	San Jose State/ Point Sur	1762	37000	21
Small	2615	Skidaway/Blue Fin/Savanna	2615	34000	13
Small	200	Smithsonian/ Urruca	200	2000	10
Small	0	Texas/Longhorn	0	0	18
Small	750	Washington/ Barnes	750	9000	12
Intermediate	1613	California/New Horizon	1613	50000	31
Intermediate	645	HBOI/Seward Johnson II	645	20000	31
Intermediate	675	HBOI/Seward Johnson I	675	27000	40
Intermediate	90.9	Oregon/Wecoma	91	3000	33
Intermediate	2500	Rhode Island/ Endeavor	2500	75000	30
Intermediate	0	Texas A&M/Gyre	0	0	33
Intermediate	2296	WHOI/Oceanus	2296	62000	27
Large	1098	California/Melville	1098	67000	61
Large	1305	California/Revelle	1305	77000	59
Large	2627	Columbia/Ewing	2627	155000	59
Large	2344	Hawaii/Ka'imikai-O-Kanaloa	2344	75000	32
Large	2604	Hawaii/Kilo Moana	2604	125000	48
Large	2655	Washington/ Thompson	2655	154000	58
Large	2034	WHOI/Atlantis	2034	118000	58
Large	1789	WHOI/Knorr	1789	102000	57
				Exp by class	
Small		14 Vessels		315000	
Intermediate		7 Vessels		237000	
Large		8 Vessels		873000	
				Avg Exp per Person by class	
Small		236 persons	Small	1335	
Intermediate		225 persons	Intermediate	1053	
Large		432 persons	Large	2021	