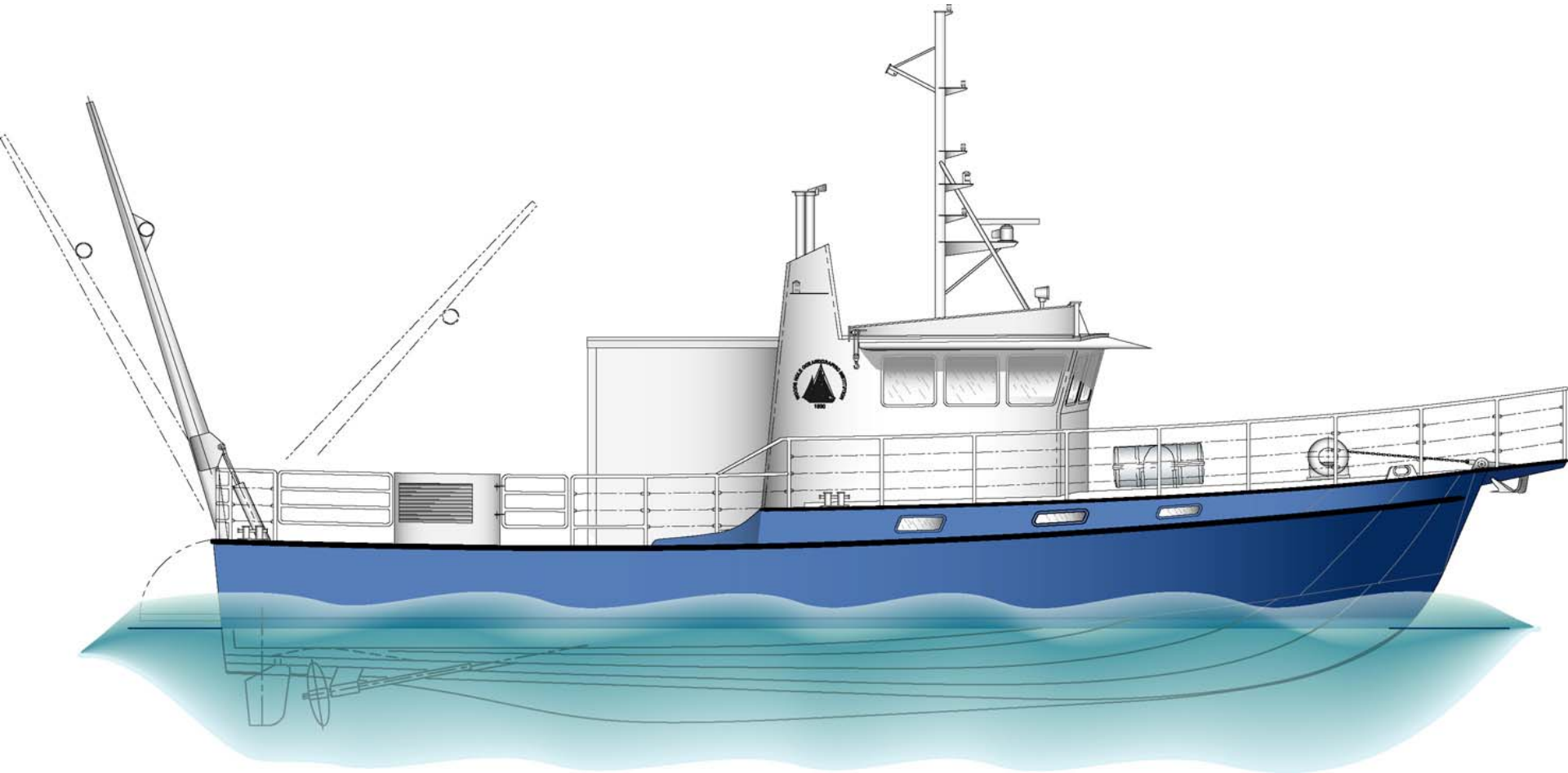




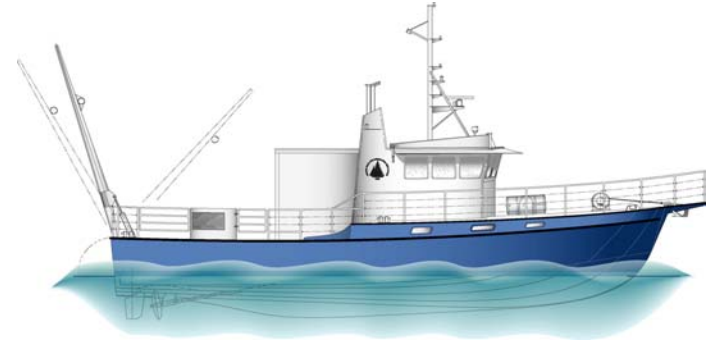
# *R/V Tioga*



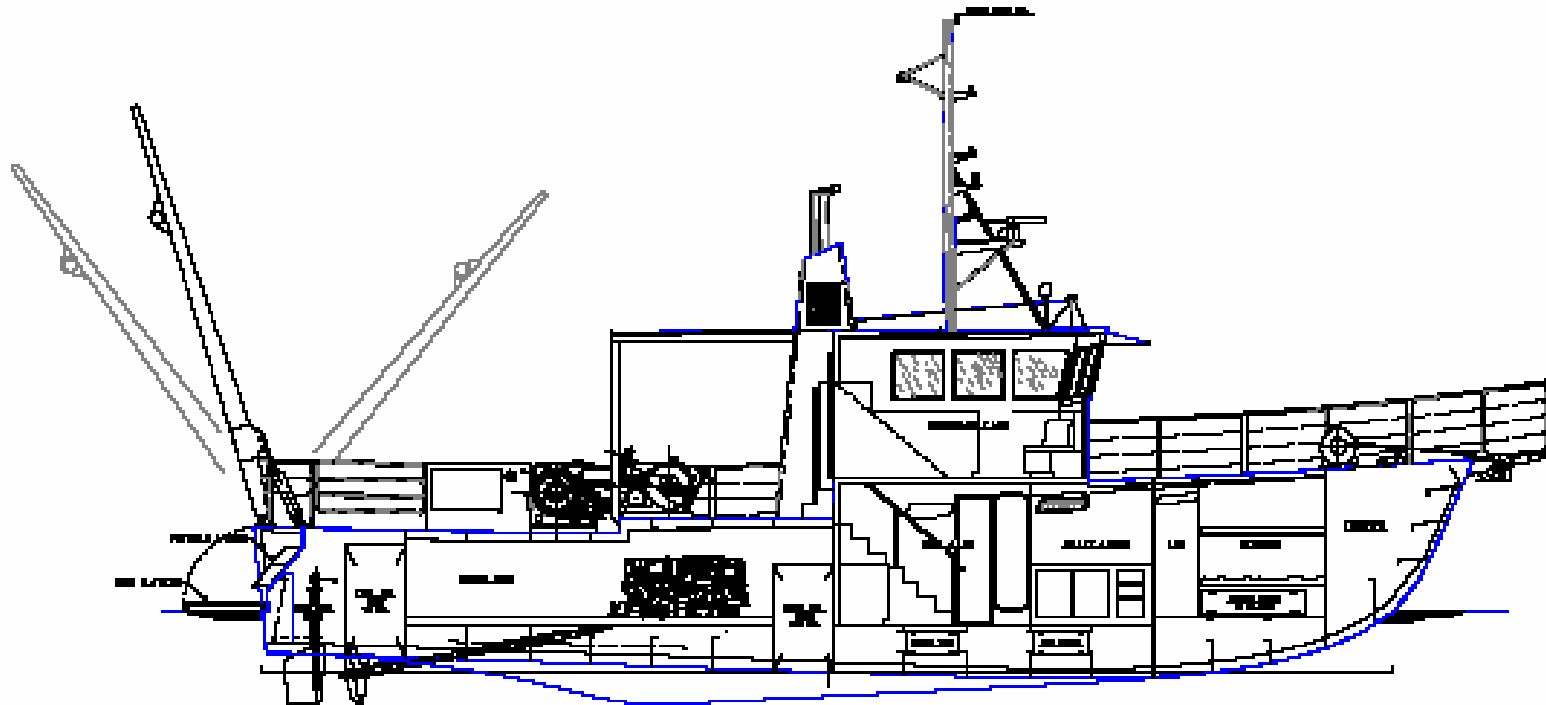
**A New, Highly Capable  
Coastal Research Vessel**

# Specifications

<b>Length:</b>	60 feet
<b>Draft:</b>	5 feet
<b>Beam:</b>	17 feet
<b>Range:</b>	350 miles
<b>Cruising Speed:</b>	20 knots (22.5 max.)
<b>Endurance:</b>	usually one day, occasionally 2 to 3 days
<b>Accommodations:</b>	6 bunks (10 + people on day trips)
<b>Gear Handling:</b>	A-frame: 4,600 lbs at X-beam 2,200 lbs at peak
<b>Fantail:</b>	15 by 20 feet
<b>Diver Support Facility</b>	



# Inboard Profile



▲	Deck structure & interior equipment	10-10-00	BL
▲	Structure, for Construction	10-10-00	BL
▲	Deck and interior	10-10-00	BL
▲	EXHIBIT	10-10-00	SP

WOODS HOLE OCEANOGRAPHIC INSTITUTION, INC. MAINTENANCE DEPARTMENT			
10-FT. ALUMINUM HULL/CUTAWAY			
INBOARD PROFILE			
DESIGNED BY	10-10-00	DATE OF PLOT	10-10-00
SCALE	1/2" = 1'	SCALE	100% OF 1/2"



# A-Frame Dimensions

