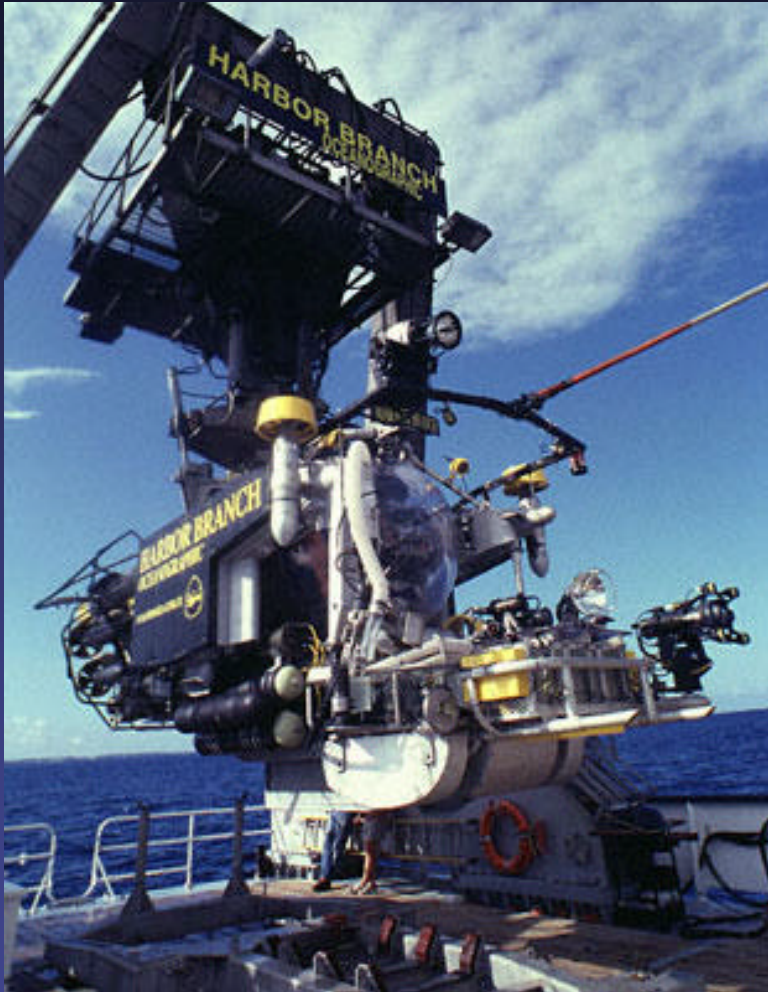


# Other Facility Operator Reports

# Harbor Branch Oceanographic Institution (HBOI)



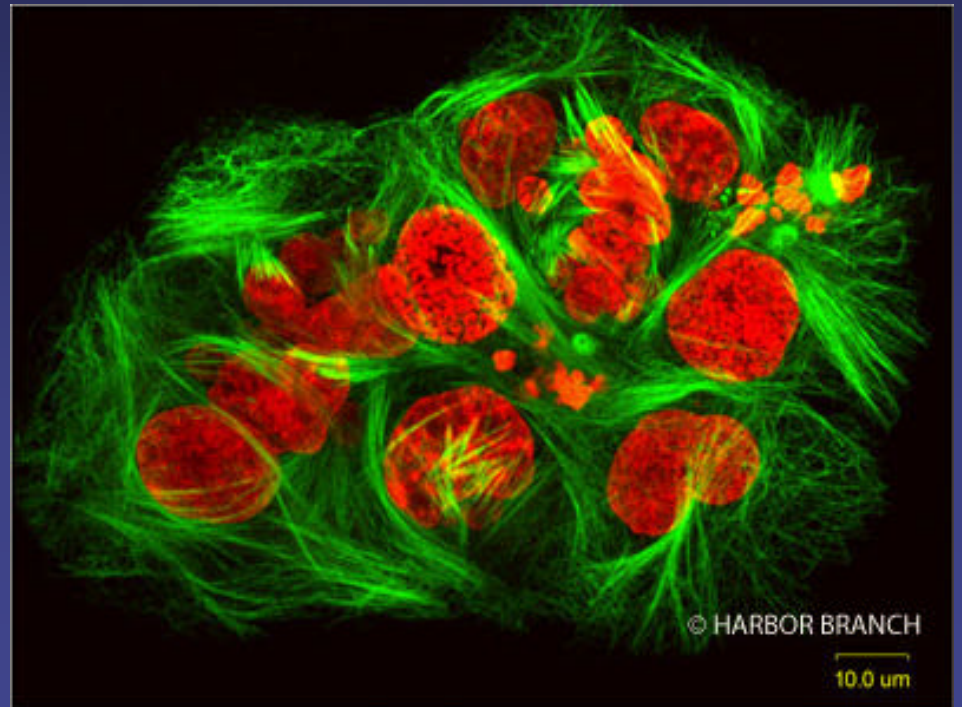
<http://www.hboi.edu/>

Summary of 2003 operations

08/18-31 Biomed research (Clelia)

09/09-27 Georges Bank, Gulf of Maine zooplankton research (JSL)

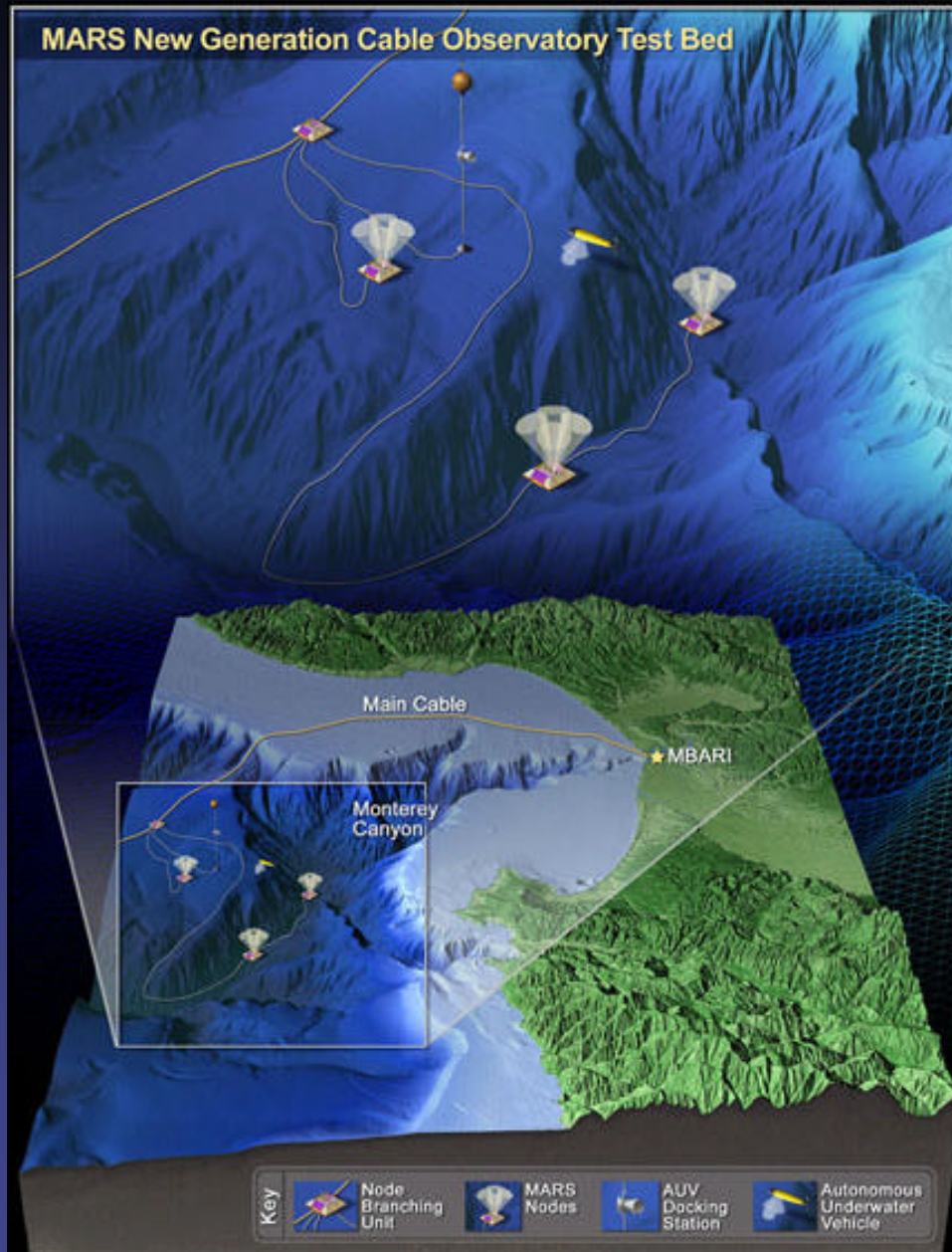
10/9-27 - Bahamas biomedical research (JSL)



# Monterey Bay Research Aquarium

## Institute (MBARI)

The Monterey Accelerated Research System (MARS), a cabled observatory system, with benthic instrument nodes, AUVs, and various benthic and moored instrumentation. MARS will enable the community to test arrays of sensors and data handling for future observatory needs. MBARI operated several scientific research expeditions outside of Monterey Bay in 2003.



<http://www.mbari.org>

# Marine Physical Laboratory (MPL) ATV Operations

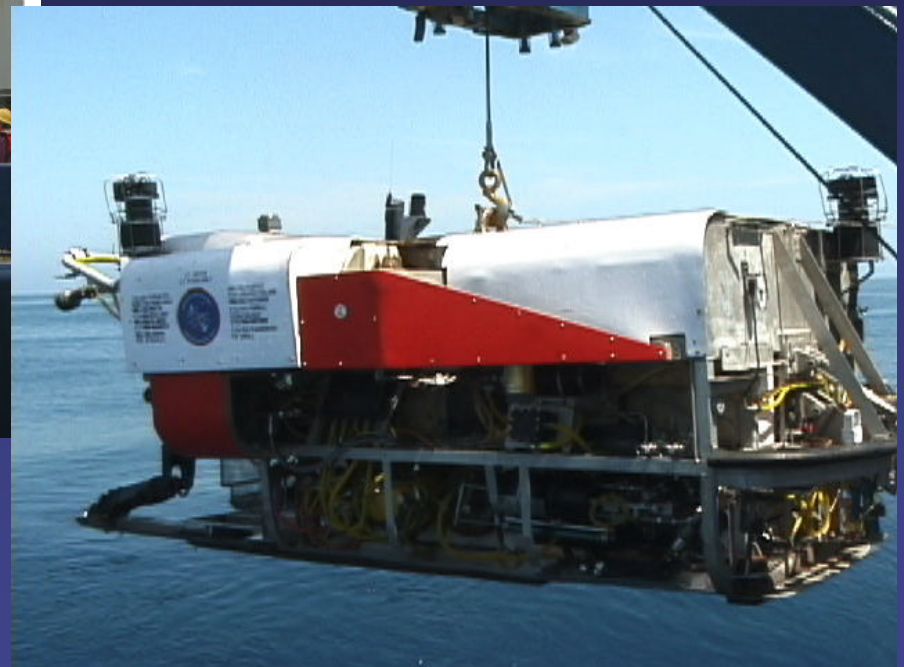
## Advanced Tethered Vehicle

- US Navy Asset
- Designed and built by NOSC
- 6100 m rating
- 200+ lb nominal payload
- Work class ROV capabilities



ATV transferred from Navy to SIO in 2000.

With ONR support, SIO reactivated and evaluated the ATV.



(Written report available at back table.)

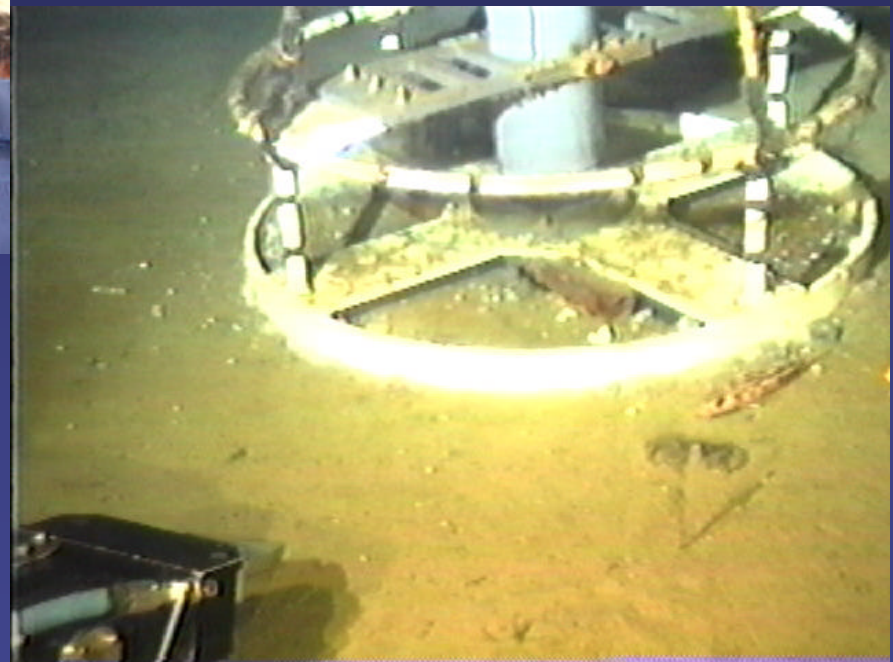
# Marine Physical Laboratory (MPL)



- Recorded dive video
- Collected 35 kg of rock samples
- Recovered lost acoustic transponder
- Streamed real-time video to the Internet, via RoadNet

## ATV Sea Trials May 2003

- Operations area west of San Diego
- 3 dives over two days
- Max depth 1100m



# Hawaii Undersea Research Laboratory (HURL)



## 2003 Operations

- 08 - test and certification dives for P-IV
- 09 - NW Hawaiian islands and banks P-IV, V and ROV dives on flanks of Nihoa is, Maro, Pearl and Hermes Reefs, Midway, Kure Atoll
- 10 - continue dives on NW Hawaiian islands and banks
- 11 - finish NW Hawaiian islands dives and commence NE Oahu work with P-V and ROV
- 12 - dives on LOIHI and W. coast of Big Island with P-V. Mid-month simultaneous two-sub dives (P-IV & -V) in marine sanctuaries sites

<http://soest.hawaii.edu/HURL.hurl.html>

2004/5 expedition to SW pacific

# ROPOS, The Canadian Scientific Submersible Facility



2004  
Operations

...

<http://www.ropos.com>

# ROPOS, The Canadian Scientific Submersible Facility

## Current Draft Schedule for ROPOS (2004) :

Dates	Ship		
<b>03/12 - 04/20;</b>	<b>Thompson;</b>	<b>Guam - Yokohama;</b>	<b>AIST, U of</b>
<b>Tokyo, NOAA</b>	<b>- First underwater eruption observed.</b>		
06/14 - 06/28;	Tully;	West Coast Nor Am;	NSERC; Chapman, Leys
08/12 - 08/27; OCMS	Auriga;	Strait of Georgia;	Terrasen; Juan de Fuca NOAA
08/30 - 10/19;	Thompson;	West Coast Nor Am;	Delaney, Cork, Embley, Hufnagel
10/25 - 10/29;	Vector;	Strait of Georgia;	EPS; Sullivan
10/30 - 11/7;	Vector;	ROV left on board;	no operations
11/ 8 - 11/21;	TBD;	TBD;	VENUS; Hill, Tunncliffe

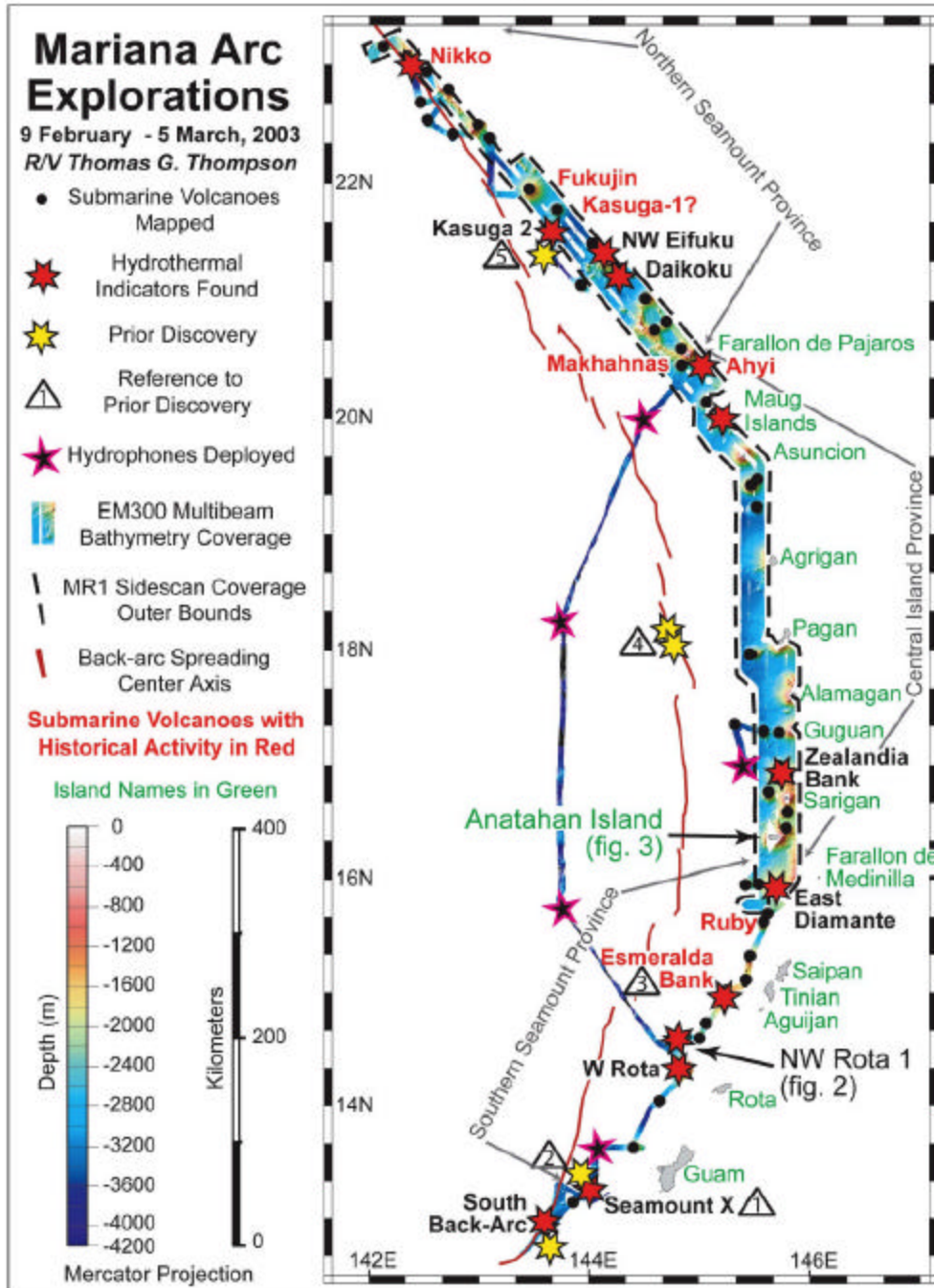


# The Mariana volcanic arc

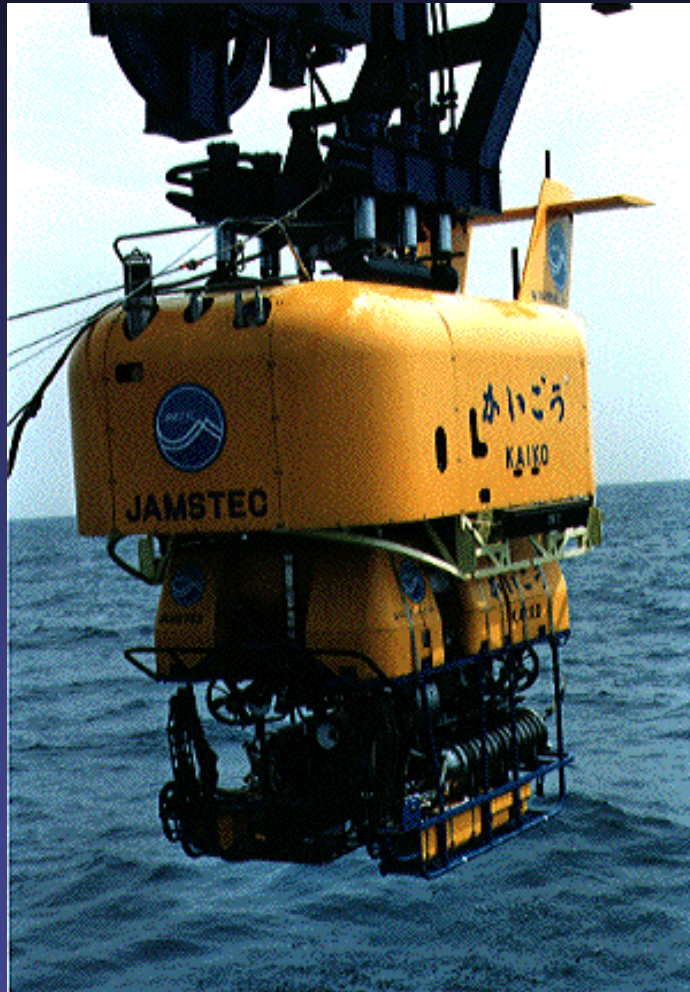
→ numerous submarine volcanoes in cross-chains

– hydrothermal activity observed on arc and backarc spreading center

(Embley et al., 2004)

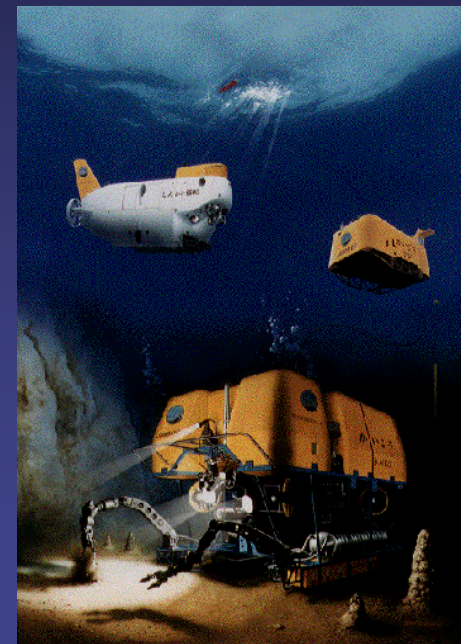


# Japan Marine Science and Technology Center (JAMSTEC)



<http://www.jamstec.go.jp/jamstec-e/index-e.html>

Replacing Kaiko,  
11000 m ROV -  
(Lost at sea, May 2003)



Kyijiko Mitsuzawa, email:  
main@jamstecseattle.org

# Southampton Oceanographic Centre (SOC), Isis ROV



Lord Sainsbury launches  
ISIS, Nov. 11, 2003



## Operations

06 MAR Atlantis, German, C. SOC Jacksonville  
Florida, Isis trials

4 APR ROV Mooring Ops. Barbados  
(rescuing the VEX Moorings, Vema Fracture  
Zone MAR)



## Science Tools:

Coring system 10 -20 Samples 5cm diam. - 50cm  
Penetration

Suction Sampler approx. 10 Samples, approx. 3.5 L

Fluid/Gas Samplers - Gas Tight Syringes, approx. 10  
Sample, each. Approx. 1 L

Water Sampler- Mini Rosette

Butterfly Nets - 5 off samples

Basket recovery for rock sample

<http://www.soc.soton.ac.uk/>