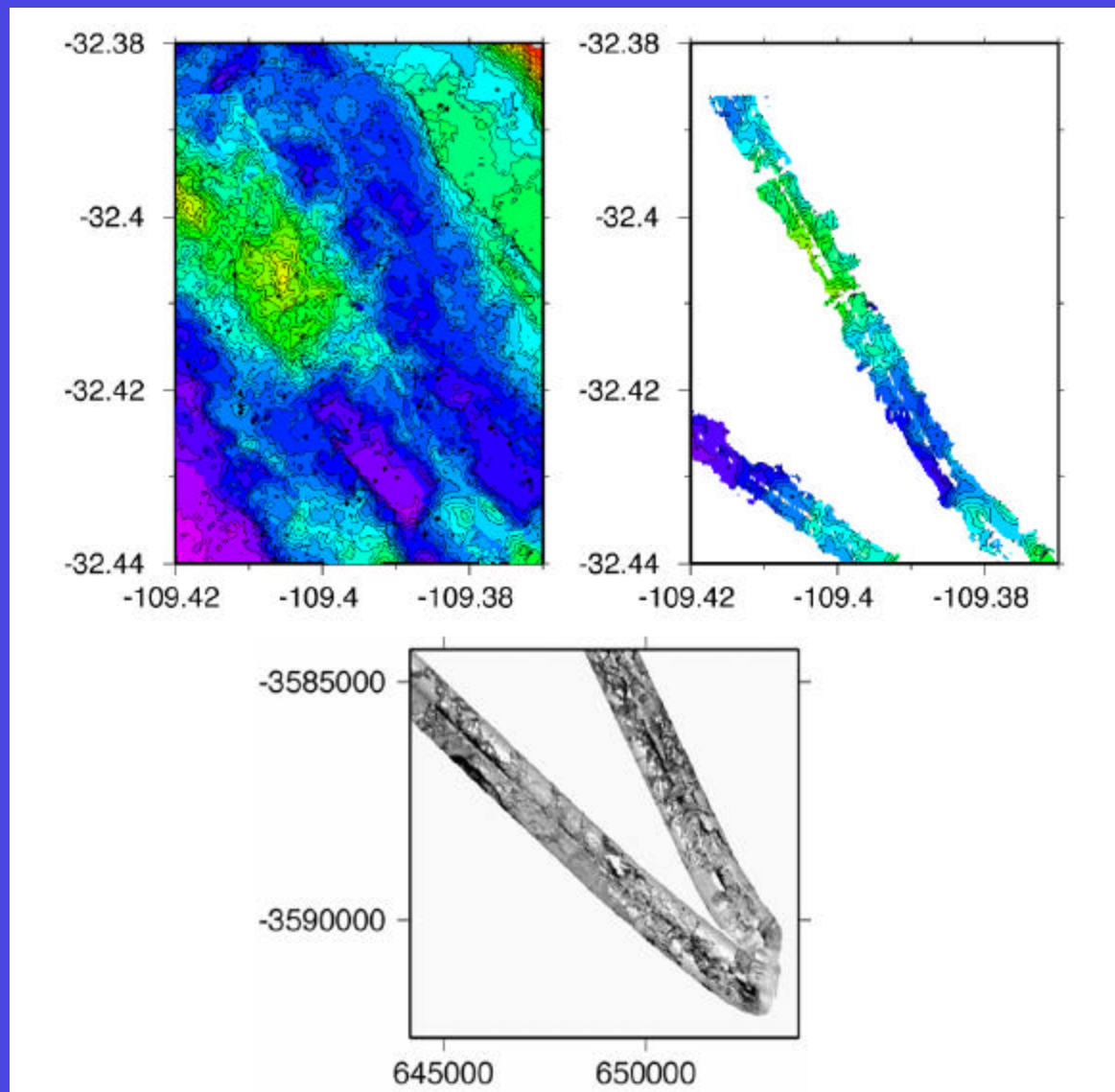




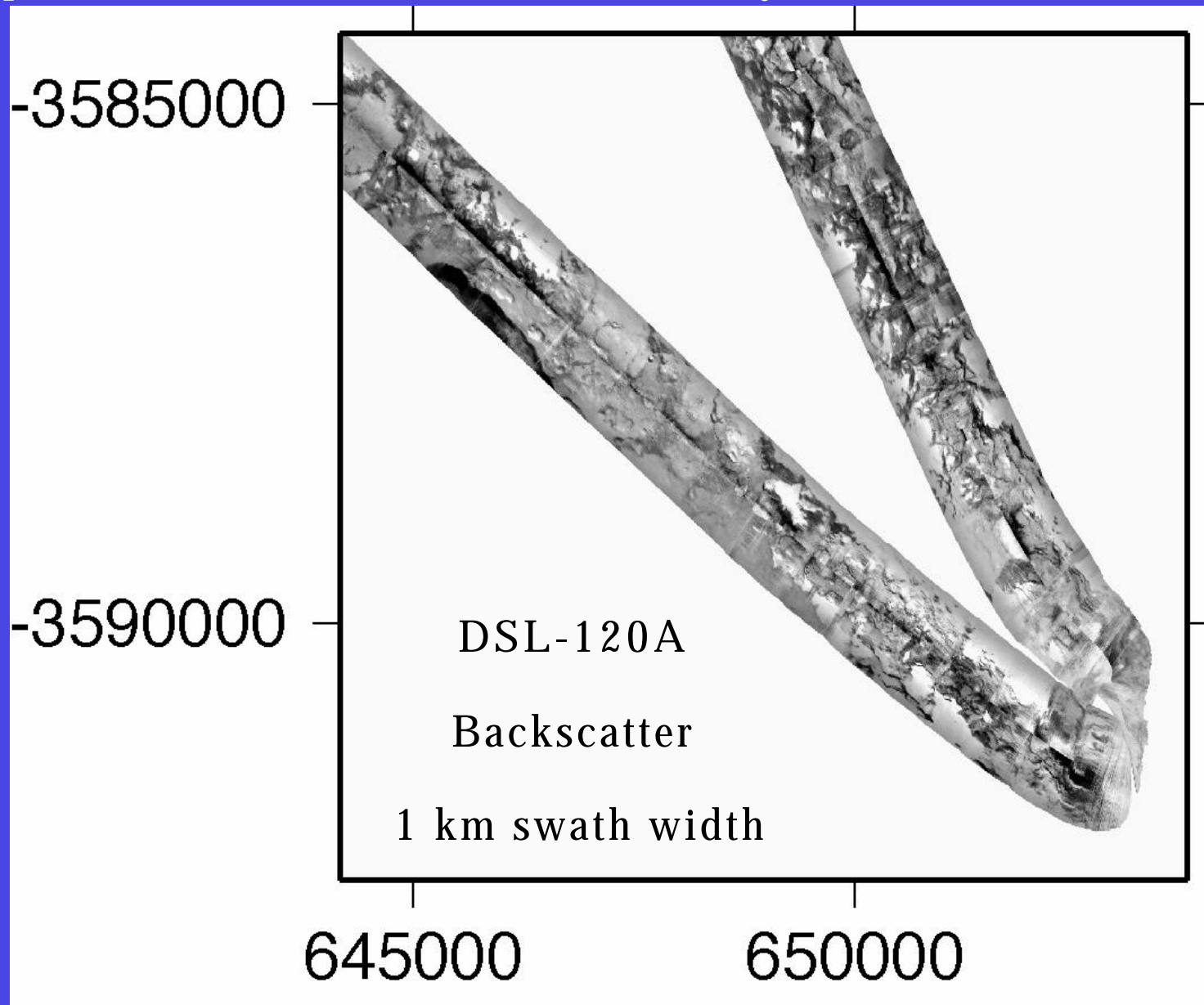
Tethered Vehicle Activities '04

- Replacement control vans
- Designing new shop area (Blake renovations)
- New Medea
- Surface Location Beacon
- SM2000/DSL120a processing integration
- Science P&T (with camera)
- First Use of slack tensioner
- Sony DSC
- Homer Probes
- New Cores
- Fall WHOI Dock trial

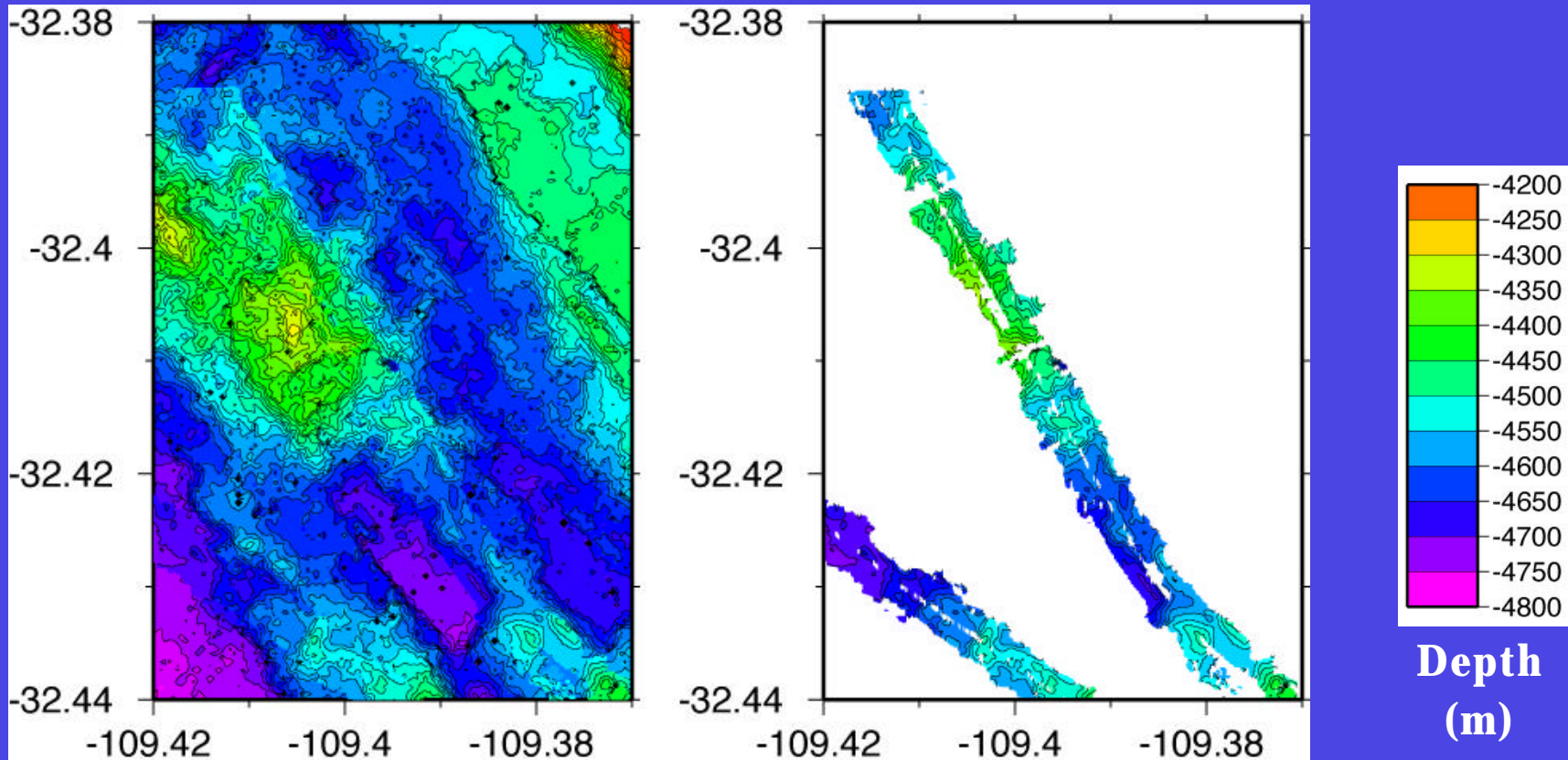
Examples of DSL-120A Data from R. Pockalny (URI) Cruise- Jan. 2004



Examples of DSL-120A Data from R. Pockalny (URI) Cruise- Jan. 2004



Examples of DSL-120A Data from R. Pockalny (URI) Cruise- Jan. 2004

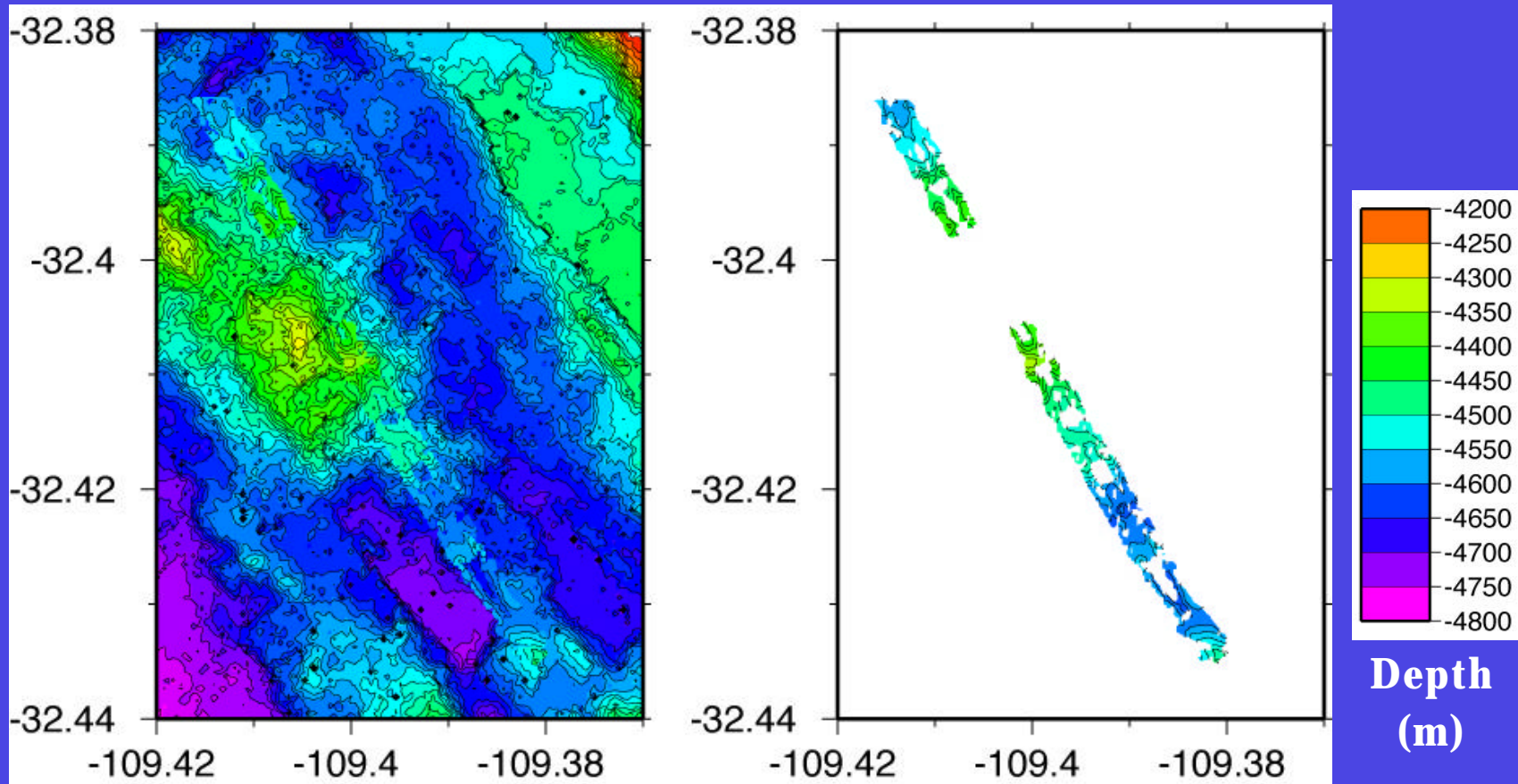


EM300 bathy on left

DSL-120A phase-bathy on right

(20 m contour intervals)

Examples of DSL-120A Data from R. Pockalny (URI) Cruise - Jan. 2004



EM300 bathy on left

SM2000 bathy on right

(20 m contour intervals)