



U.S. COAST GUARD

Agency Report

Research Vessel Operators Committee (RVOC) Annual Meeting

Jonathan Berkson

October 8, 2003

Outline

- USCG: DOT → DHS 1 Mar 2003
 - USCG Traditional Missions Continue
- International Polar Year → 2007-2008
 - IPY-4 Sanctioned by International Council for Science (ICSU)
 - US Effort Coordinated by US Polar Research Board of the National Academies
 - 125th Anniversary of IPY; 50th Anniversary of IGY
- Domestic Ice Operations
- Polar Ice Operations

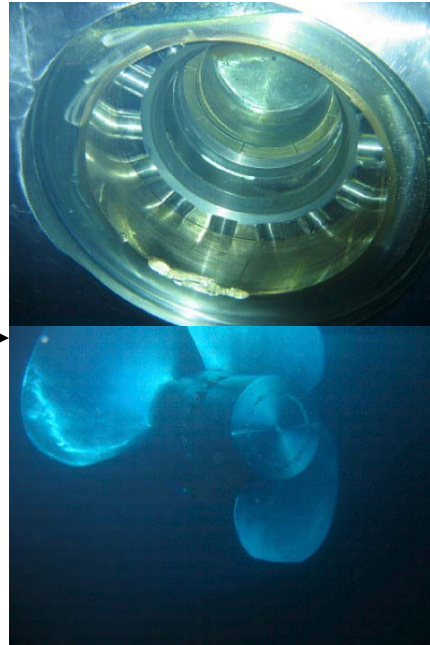
Domestic Ice Operations

- D-1
 - Severe Ice Season Put Significant Strain on ATON System
- D-5
 - Moderate to Heavy Ice Season
 - Significant Ice Flows to North Carolina
- D-9
 - Most Severe Conditions in Great Lakes in Nearly 50 years
 - Superior, Huron, and Erie frozen
 - Sault St. Marie Locks opened March 25th
 - Thick Ice Cover on Southern Lake Michigan around Chicago
 - Icebreaking Required for the First Time in 25 Years

Polar Icebreakers Maintenance Issues

- 1. Aging 399' WAGB class.**
- 2. Operationally demanding Polar region OPAREA.**
- 3. Recent Antarctic ice conditions are most severe in USAP history.**
- 4. Deep Freeze operational req'mts exacerbate 399' WAGB maintenance problems.**

Recent Operational Damage: Cause & Effects



Demanding Ice Conditions =
High Maintenance costs &
High Personnel costs!



Polar-Class Icebreaker Challenges

- Deteriorating Ice Conditions in Antarctica (B-15 & C-19)
Leading to a 2-Ship DF as the Norm
- Decreasing Reliability as Polar-Class Icebreakers Reach
Expected Service Life of 30 Years
- *Healy* Performing Well
- *Polar Sea* DF03 Repairs
- Upgrade or Replace *Polar Sea* and *Polar Star*