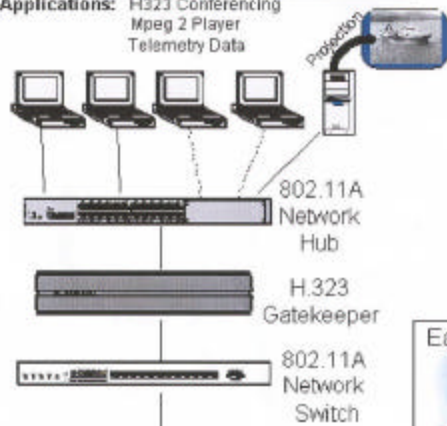




URI - GSO



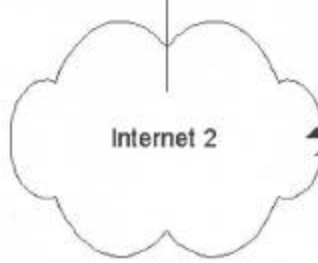
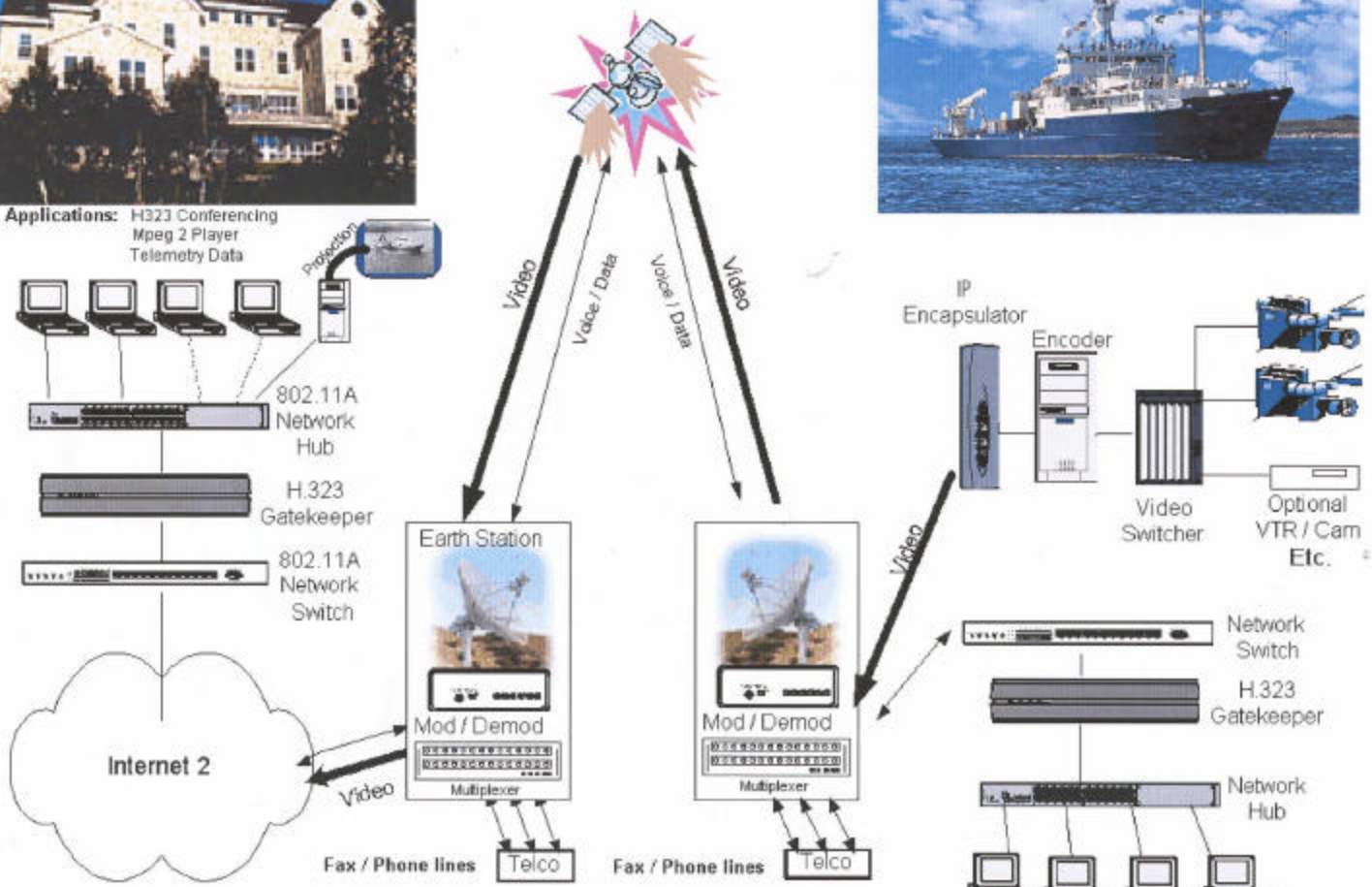
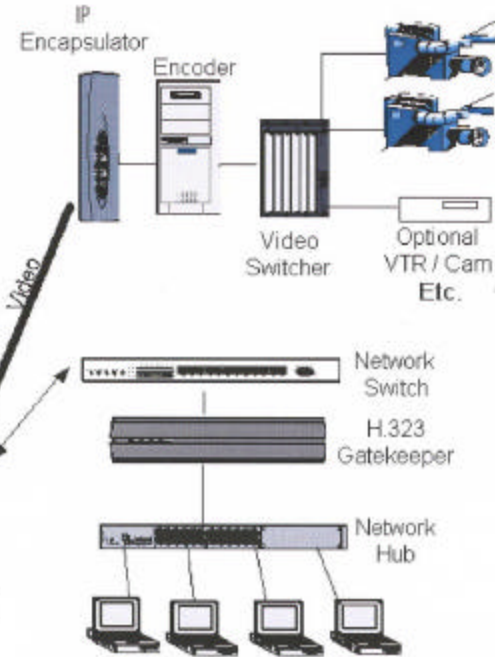
Applications: H323 Conferencing
Mpeg 2 Player
Telemetry Data



**KNORR 2003
Black Sea Expedition**



Shipboard









Temperature: 65 F

Speed: 2 Knots

Latitude: 125
Longitude: 36.5

DEPTH:
56 / ft

PRESSURE:
2,856 p/in

PAD: 12%

ELE: 300

OXYGEN:
85 %





... SHARING THE

KNOWLEDGE

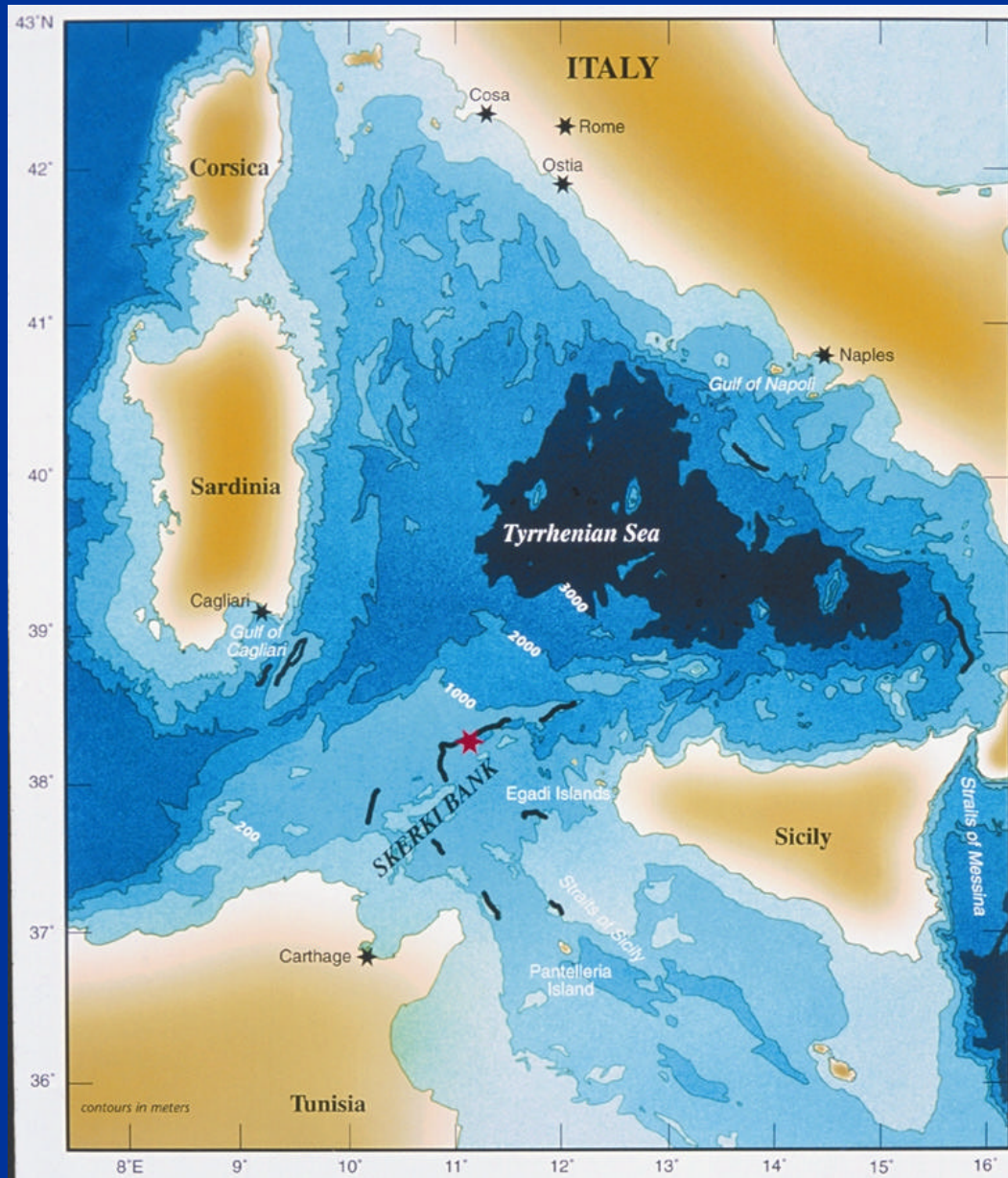
INTERACTIVE IMMERSION THEATRE

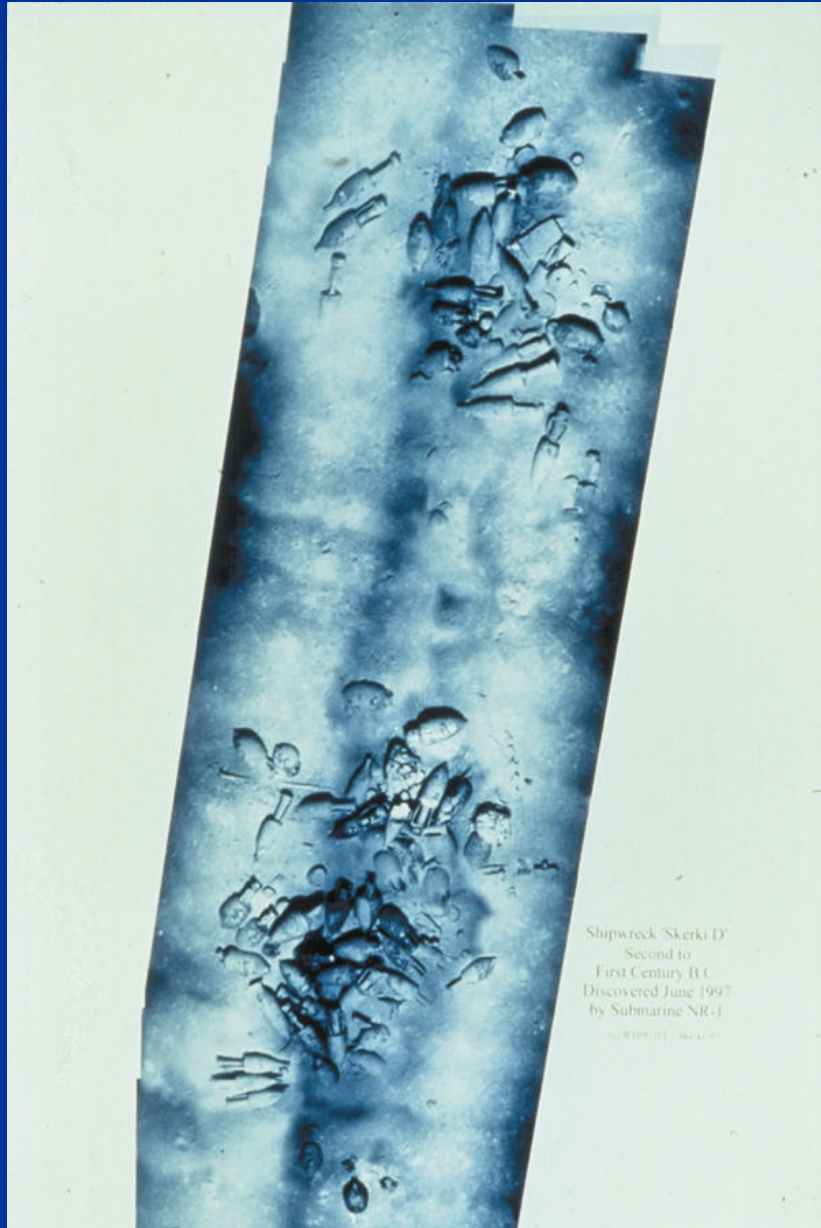
THE INTERACTIVE THEATRE
ALLOWS AN AUDIENCE TO
INDIVIDUALLY EXPLORE AND
NAVIGATE ON THE BIG
SCREEN WITH INTERACTIVE
BIG DEFINITION ADVENTURES
FROM PERSONAL TOUCH
SCREEN CONSOLES.

ALTERNATIVE USES FOR
THE SPACE

- INTERACTIVE PROGRAMS
- PRESENTATIONS/
LECTURES/PRESS
EVENTS
- SATELLITE FEEDS
- DVD PRESENTATIONS
- TRAINING
- WEB ENABLED FOR
ADDITIONAL EXPLORATIONS

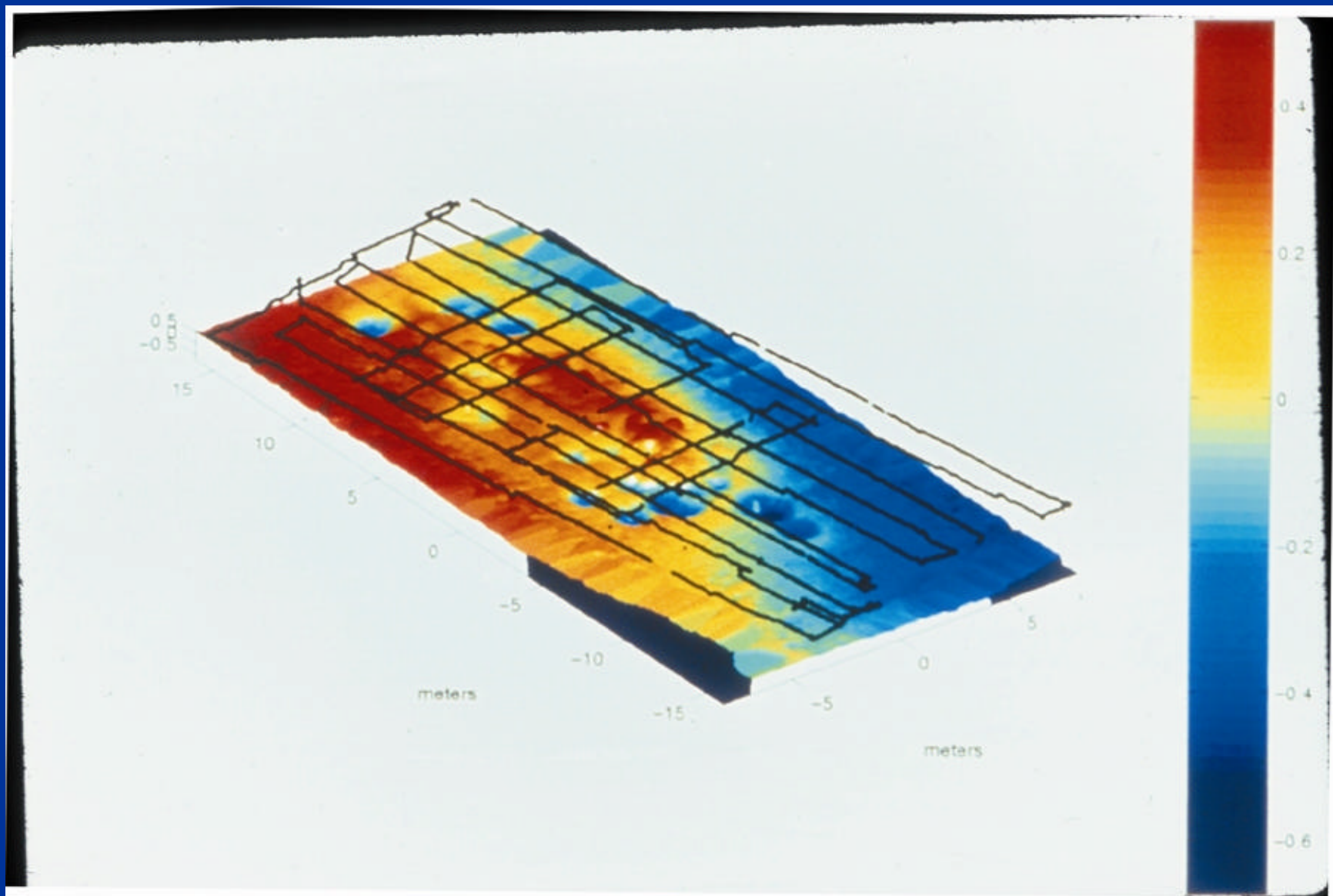


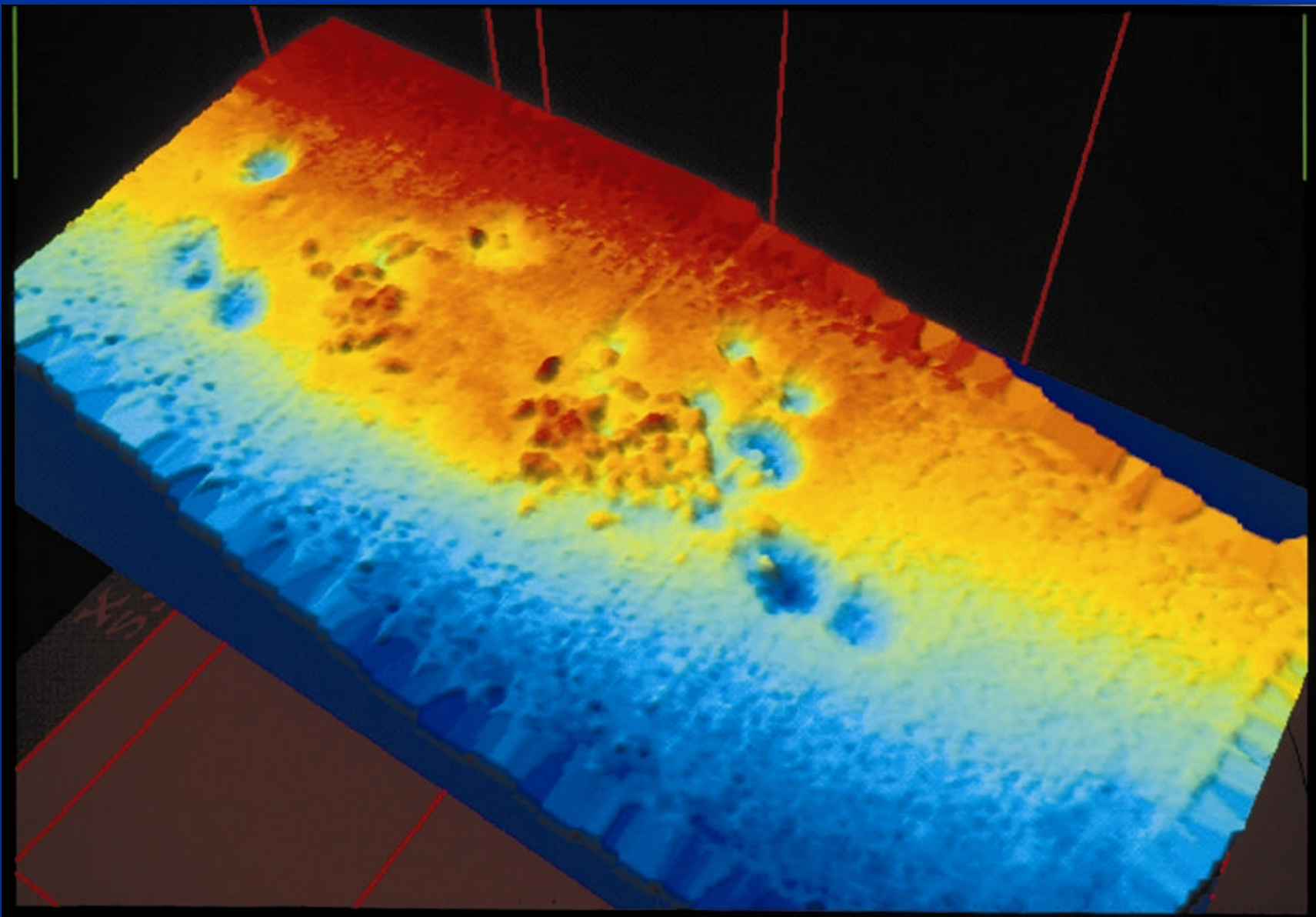


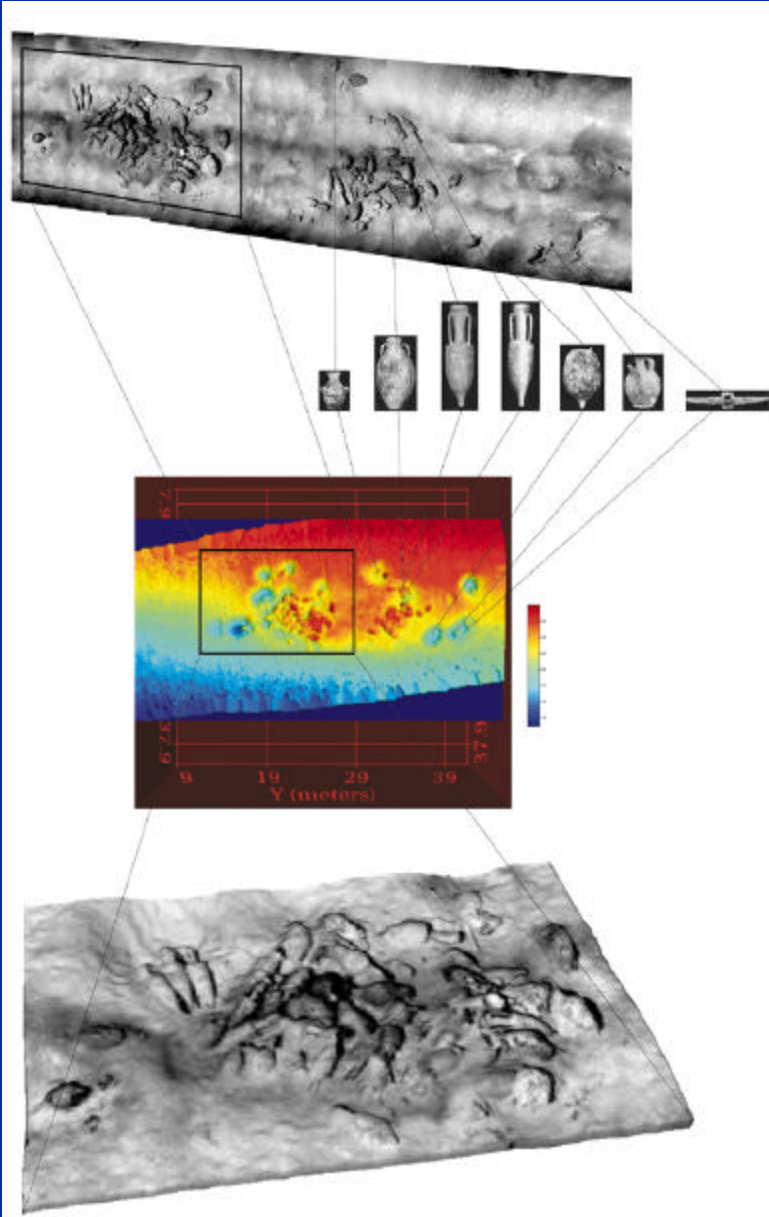


Shipwreck 'Skerki D'
Second to
First Century B.C.
Discovered June 1997
by Submarine NR-1

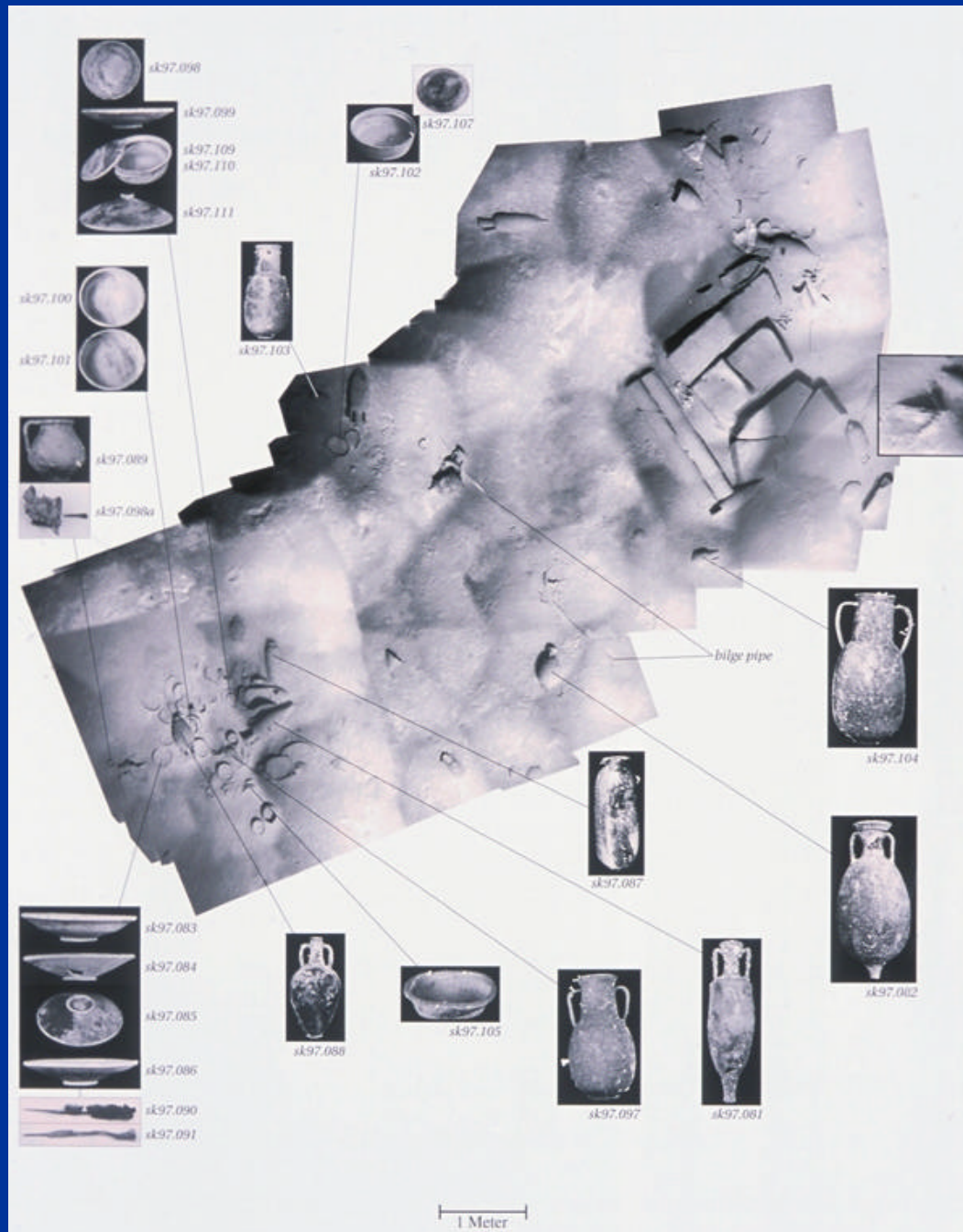
© 1998 by NOAA







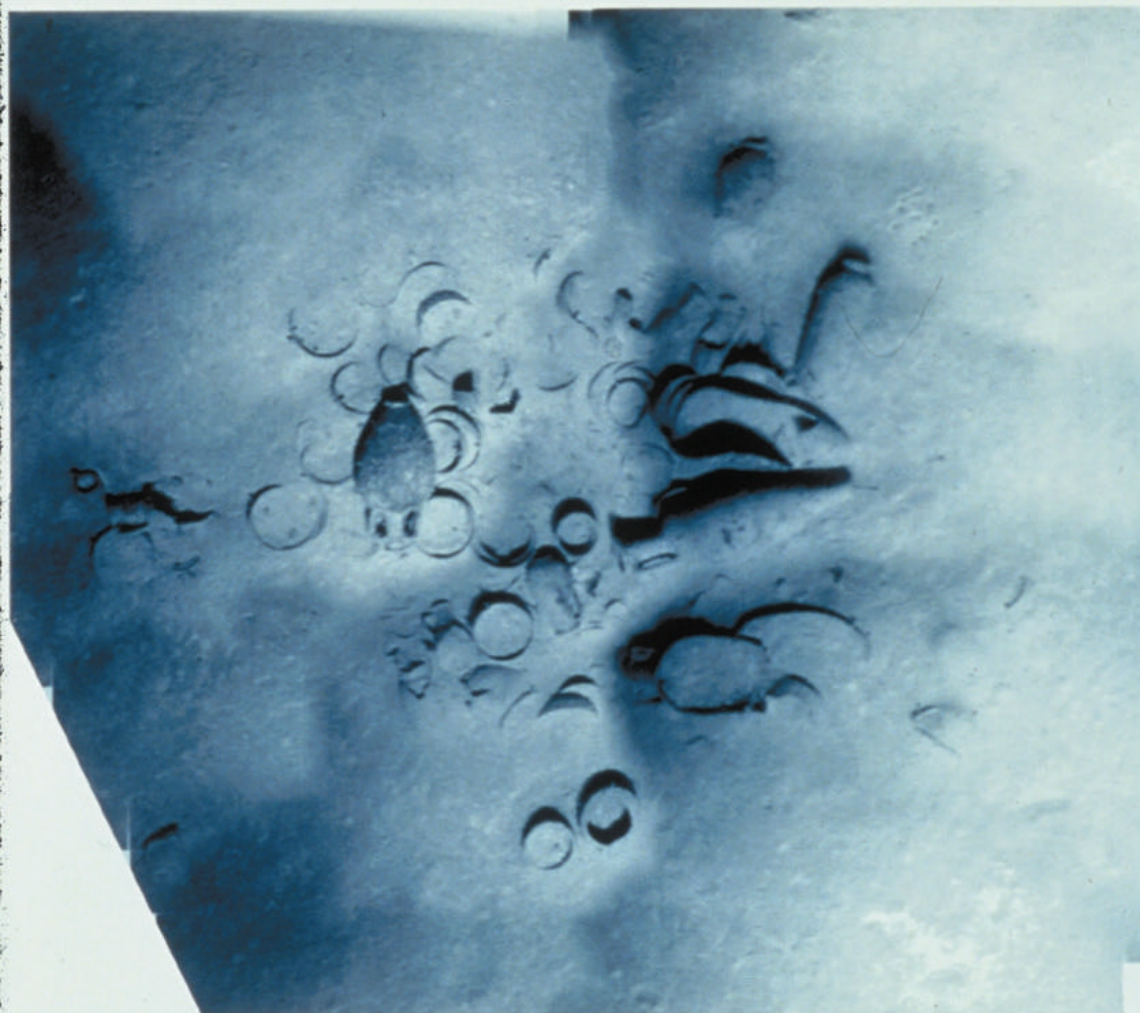




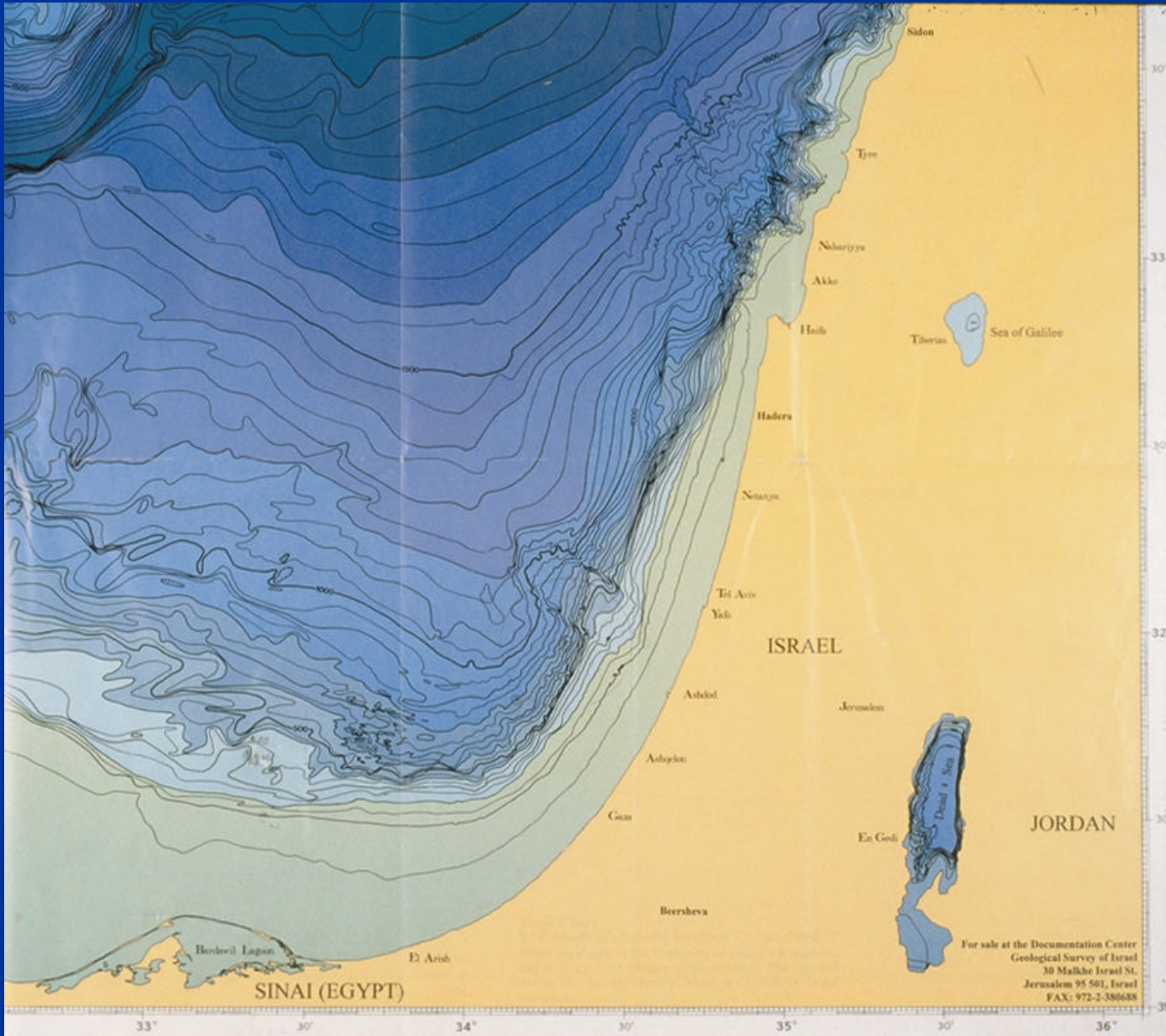


(c) WHOI, IFE - Skerki '97

'Skerki F' Roman Shipwreck - Partial Photomosaic
First Century A.D.
Ceramic Cargo



(c) WHOI, IFE - Skerki '97



ELISSA (Shipwreck B) Circa 750 B.C.

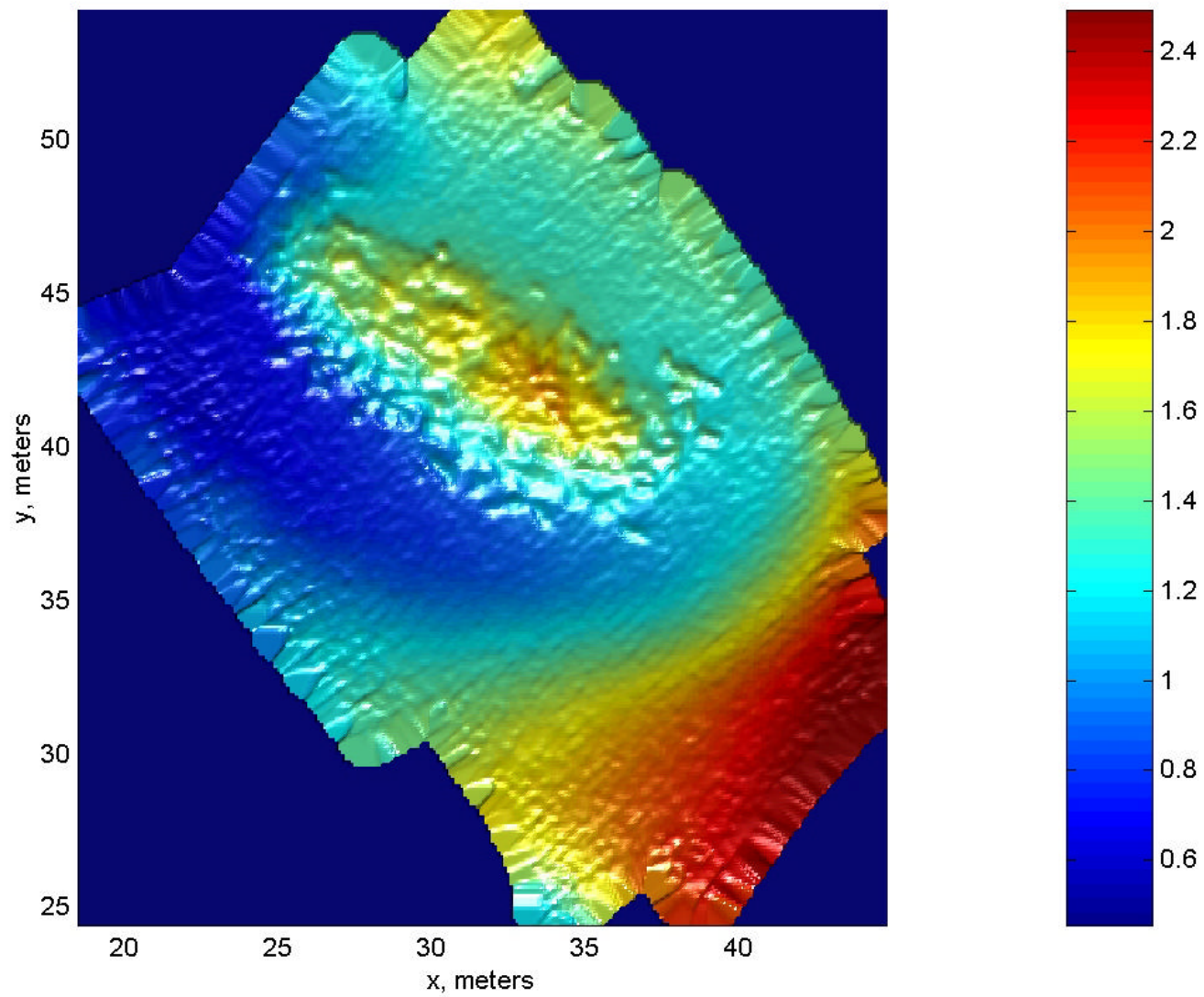
Elissa, Tyrian princess and sister of the Tyrian king Pum'yaton (better known as Pygmalion), fled from mainland Phoenicia to Cyprus and picked up a crew of Phoenicians. Together they set sail for the western Mediterranean. According to legend she then went on to found Carthage.

Major Sponsors:
Leon Levy
The National Geographic Society
The Office of Naval Research
Dynacon



Courtesy of H. Singh, J. Howland (c) WHOI, IFE, ASHKELON EXCAVATIONS

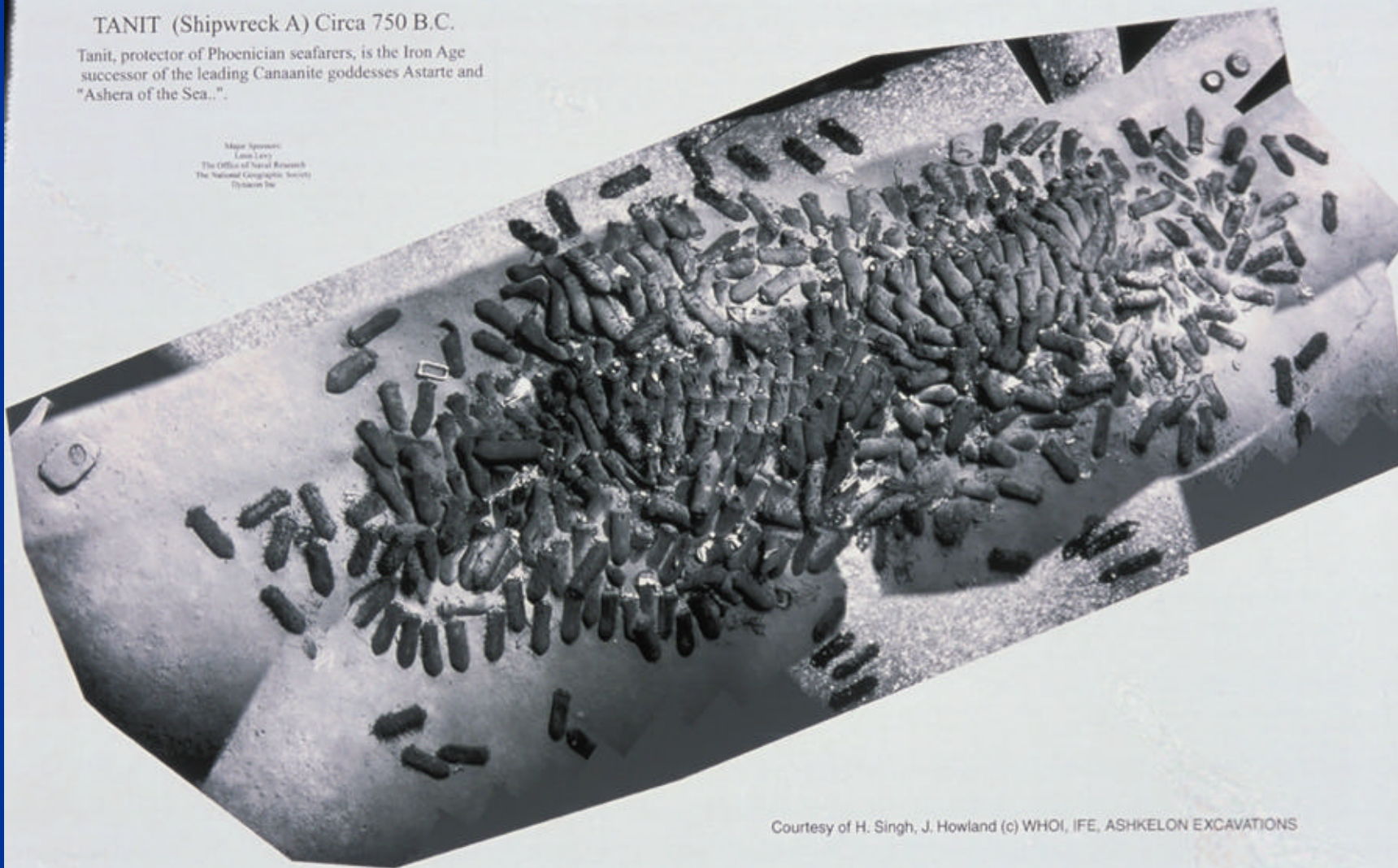
Elissa, Jason 250



TANIT (Shipwreck A) Circa 750 B.C.

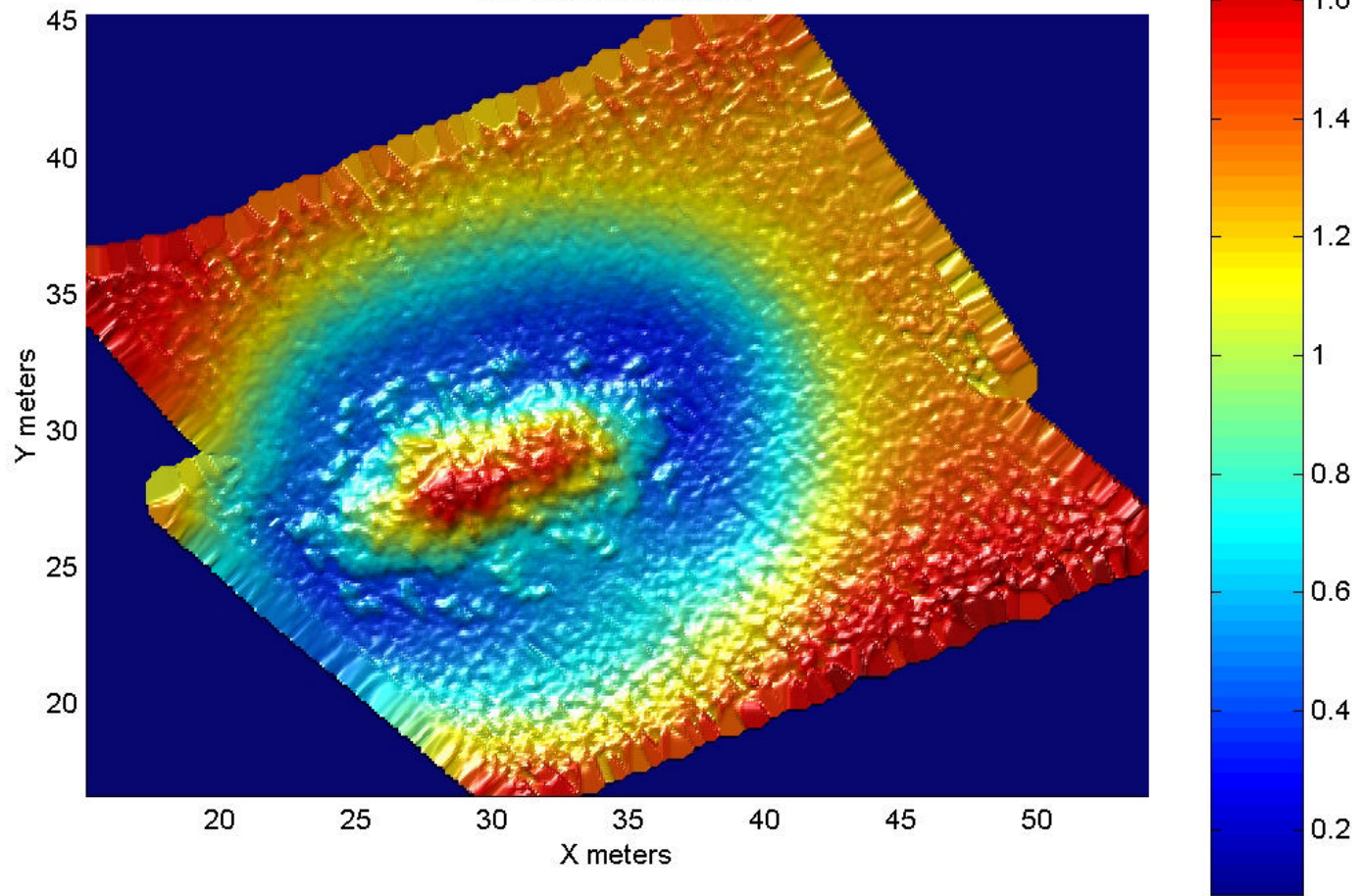
Tanit, protector of Phoenician seafarers, is the Iron Age successor of the leading Canaanite goddesses Astarte and "Ashera of the Sea..".

Major Specimen:
Linné, Linné
The Office of Naval Research
The National Geographic Society
Olynthus, Pa.



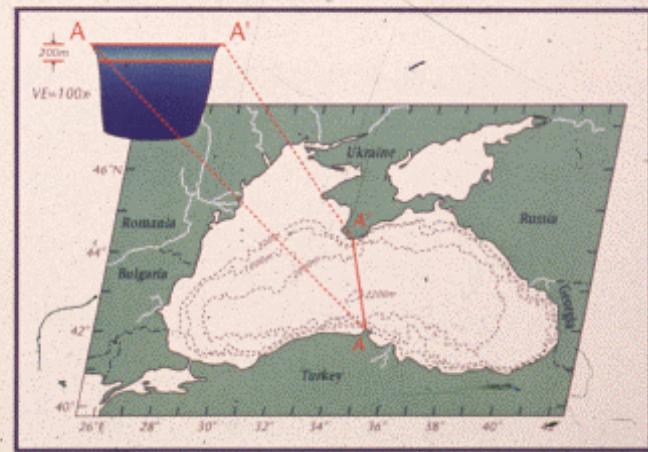
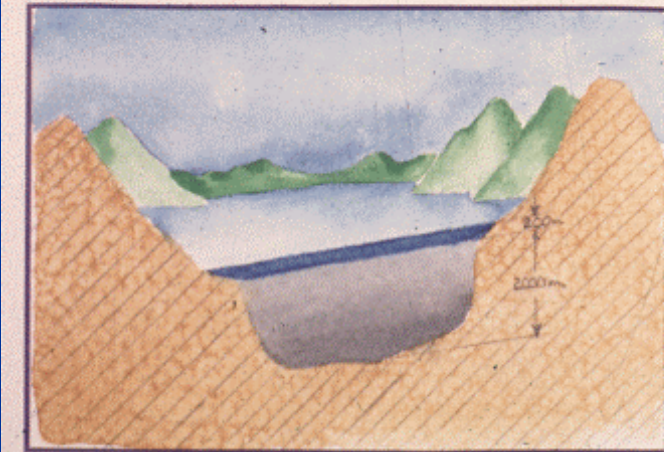
Courtesy of H. Singh, J. Howland (c) WHOI, IFE, ASHKELON EXCAVATIONS

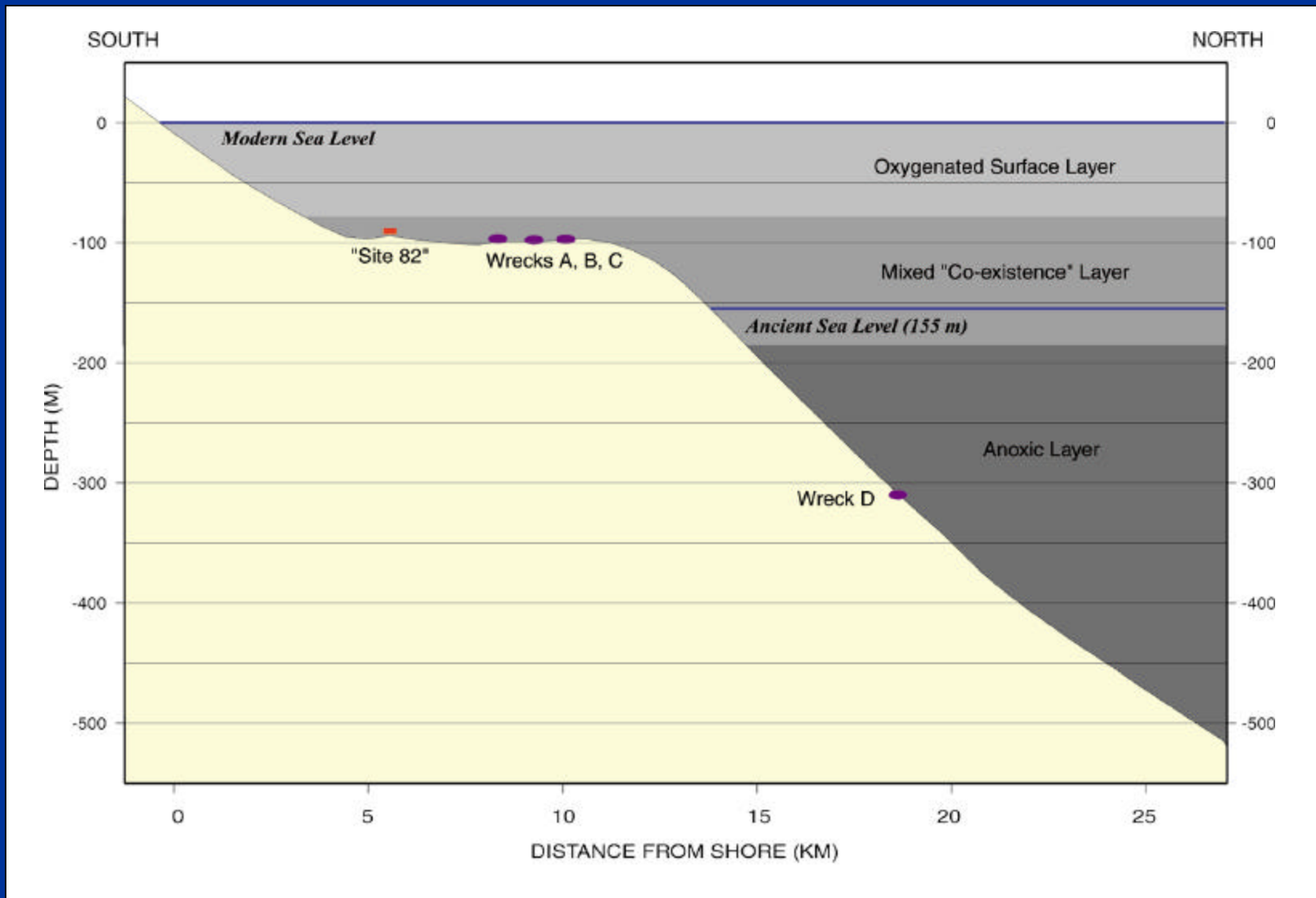
Tanit Microbathymetry









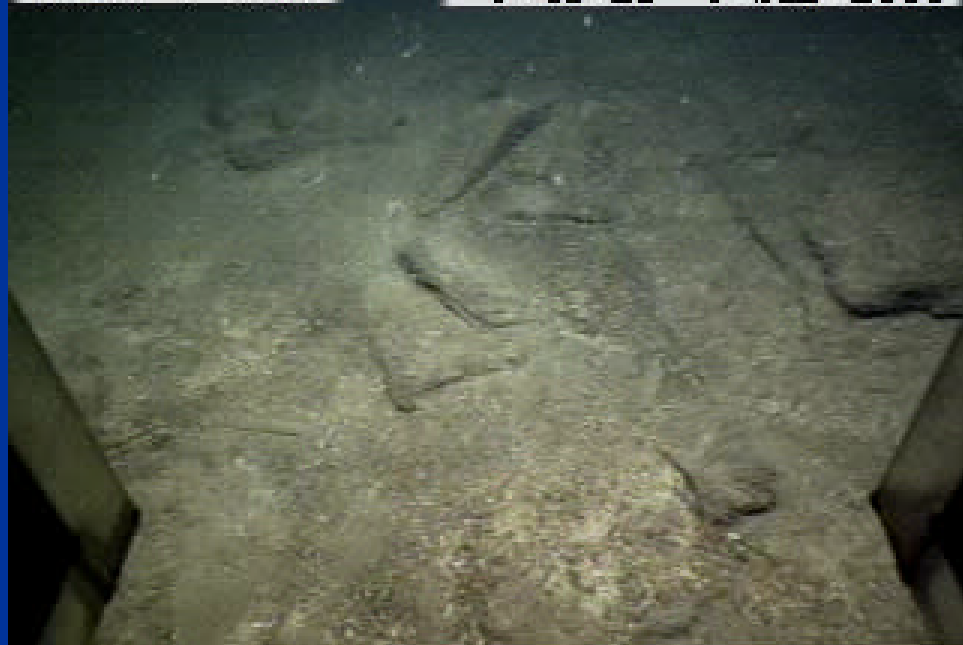




ARGUS 3 CHIP 10:07:36 9-SEP-2000



ARGUS 3 CHIP 9:46:23 9-SEP-2000



ARGUS 3 CHIP 9:36:22 9-SEP-2000









11:04:56 25-SEP-2000















... SHARING THE

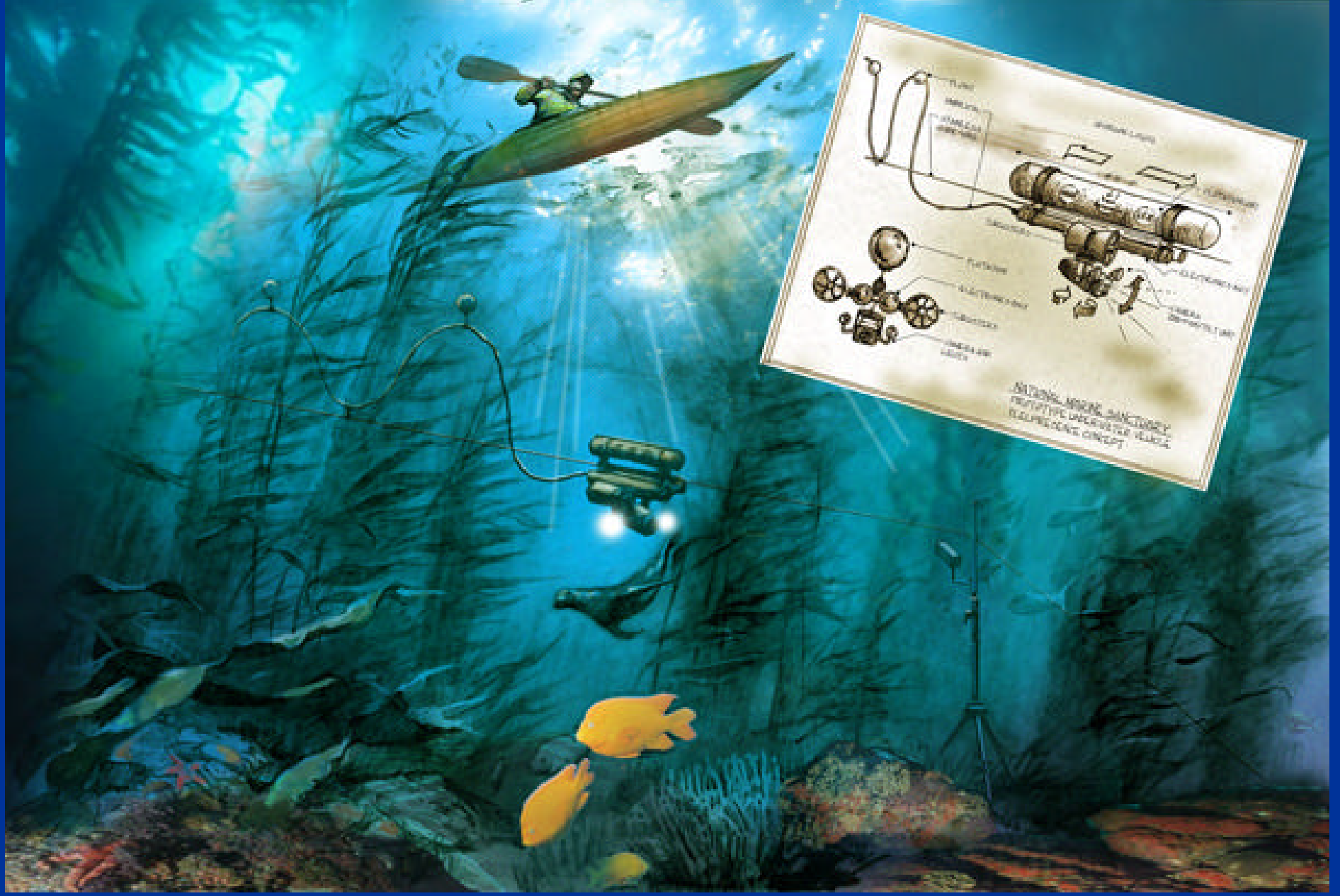
KNOWLEDGE

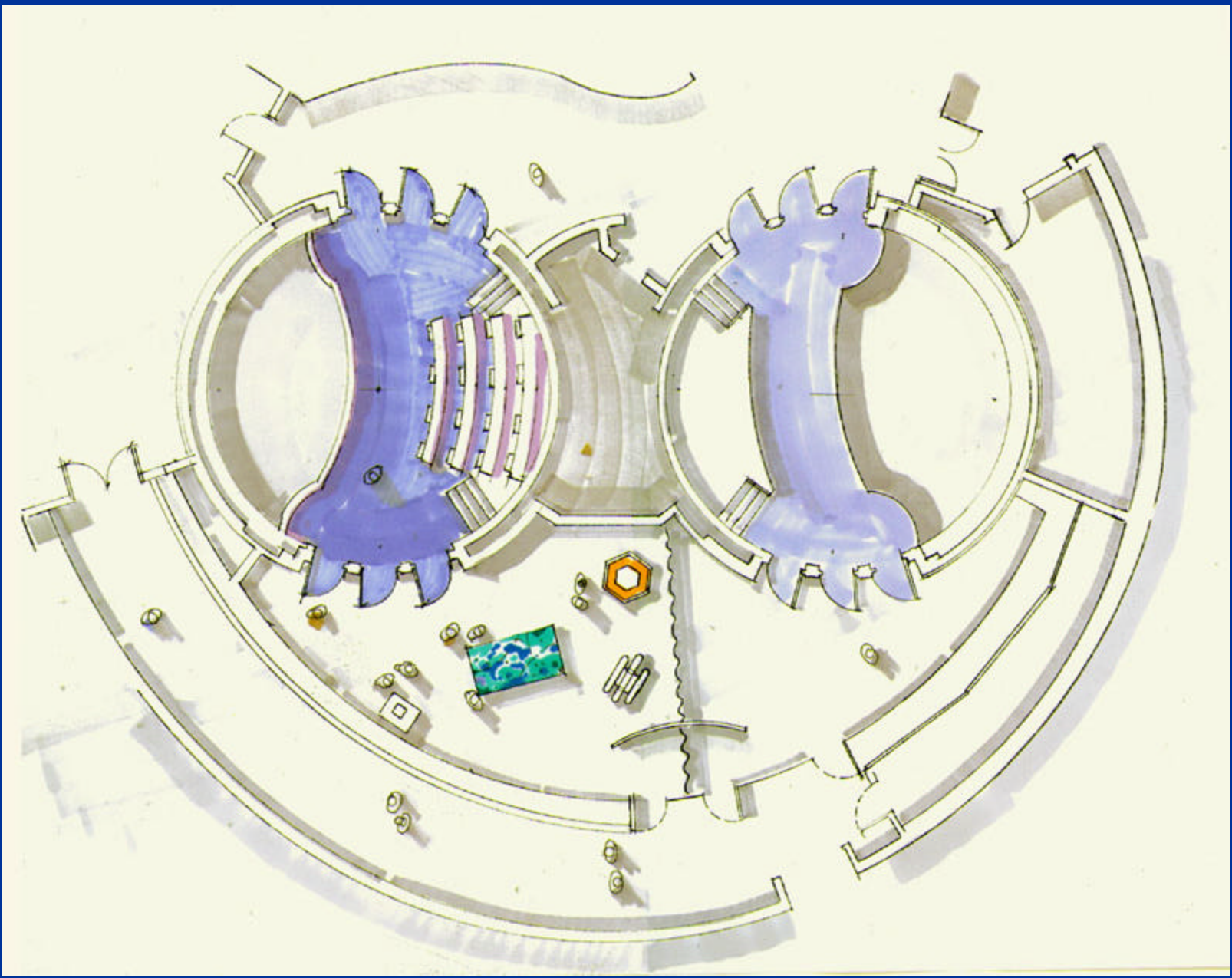
INTERACTIVE IMMERSION THEATRE

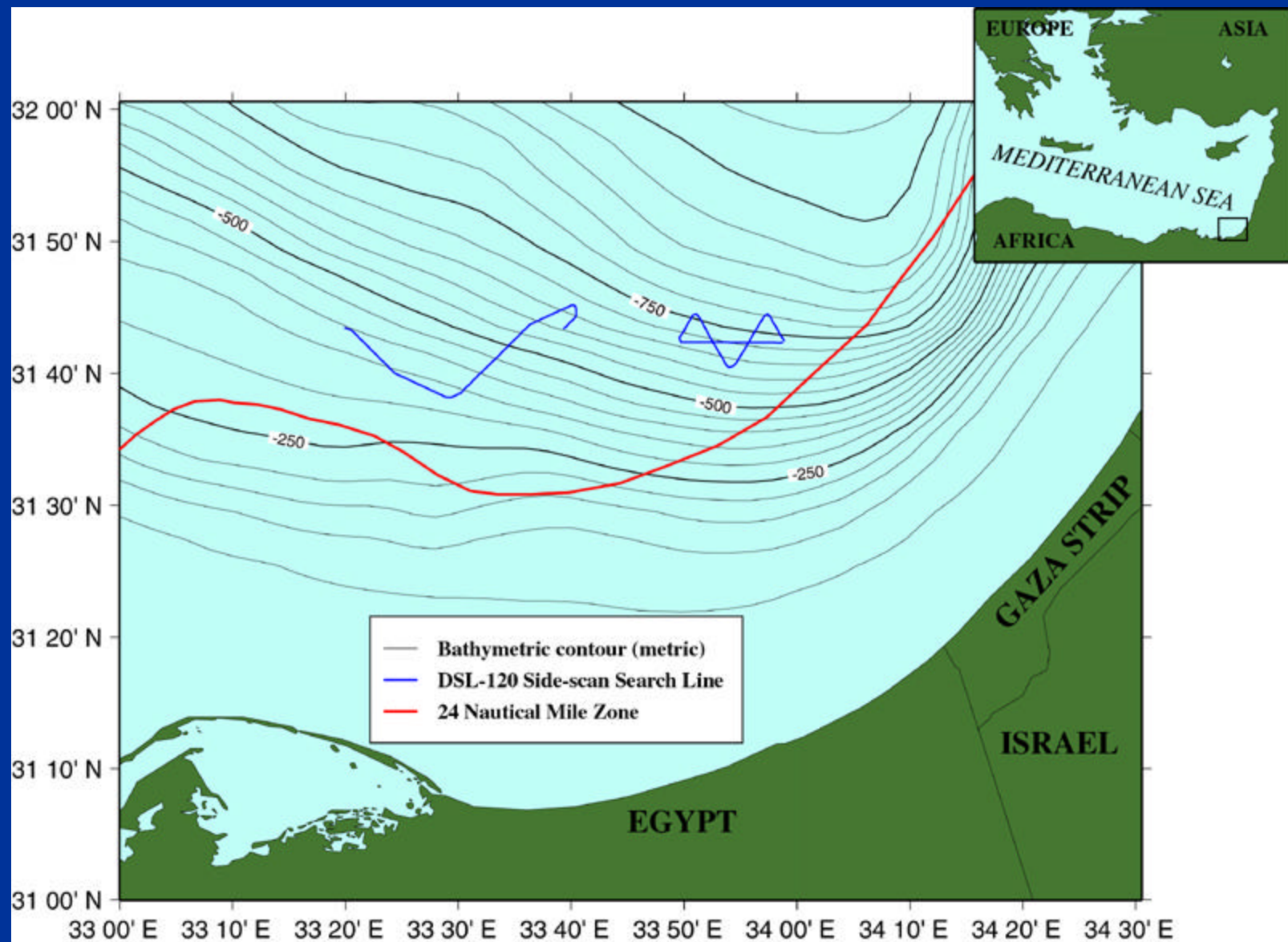
THE INTERACTIVE THEATRE
ALLOWS AN AUDIENCE TO
INDIVIDUALLY EXPLORE AND
NAVIGATE ON THE BIG
SCREEN WITH INTERACTIVE
BIG DEFINITION ADVENTURES
FROM PERSONAL TOUCH
SCREEN CONSOLES.

ALTERNATIVE USES FOR
THE SPACE

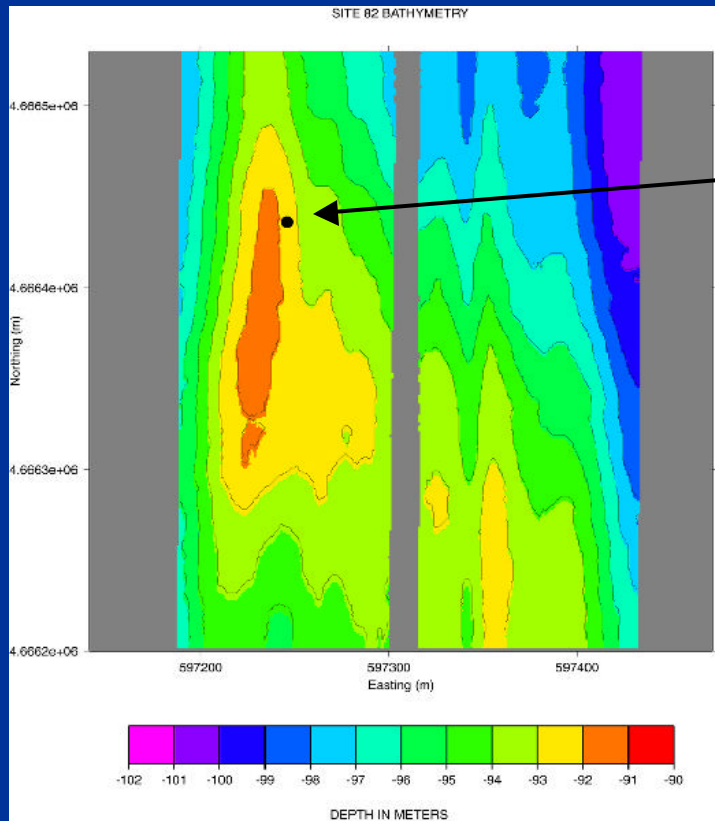
- INTERACTIVE PROGRAMS
- PRESENTATIONS/
LECTURES/PRESS
EVENTS
- SATELLITE FEEDS
- DVD PRESENTATIONS
- TRAINING
- WEB ENABLED FOR
ADDITIONAL EXPLORATIONS



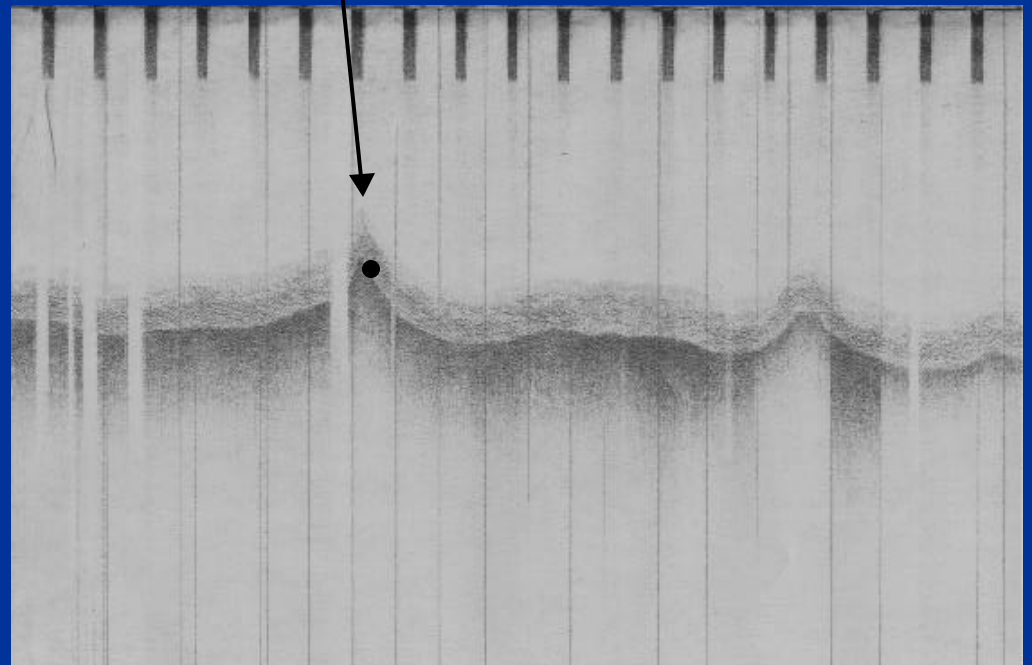




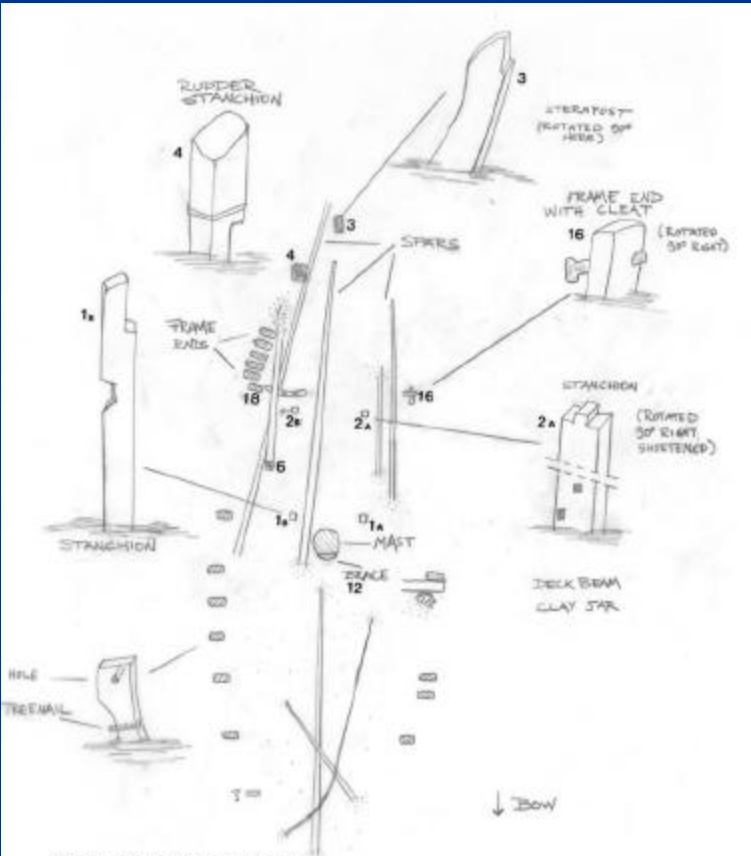
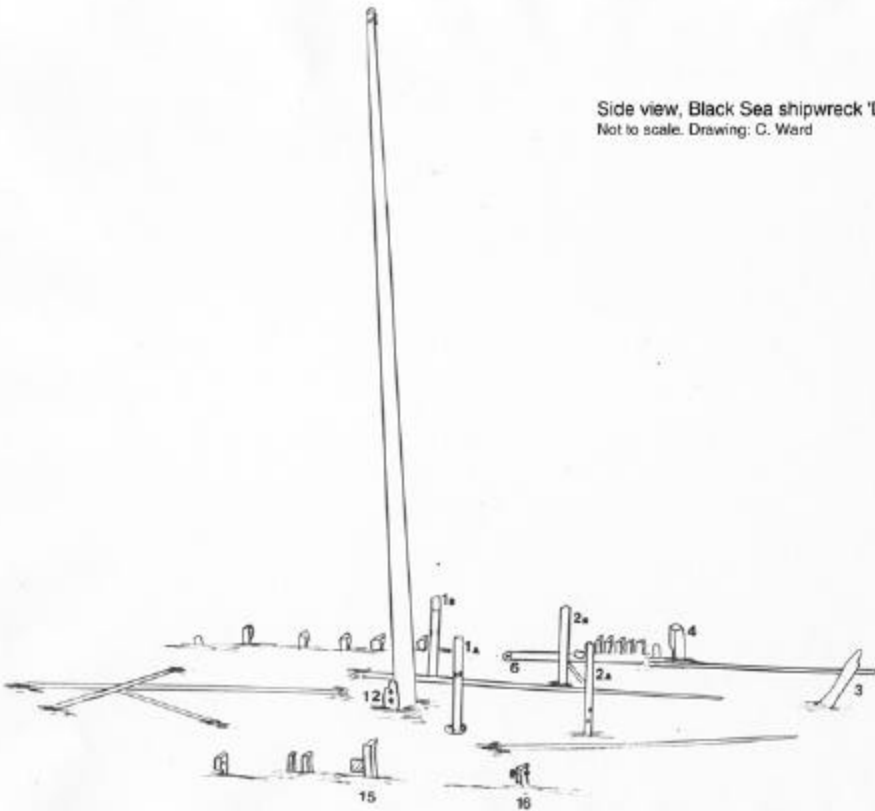




“Site 82”

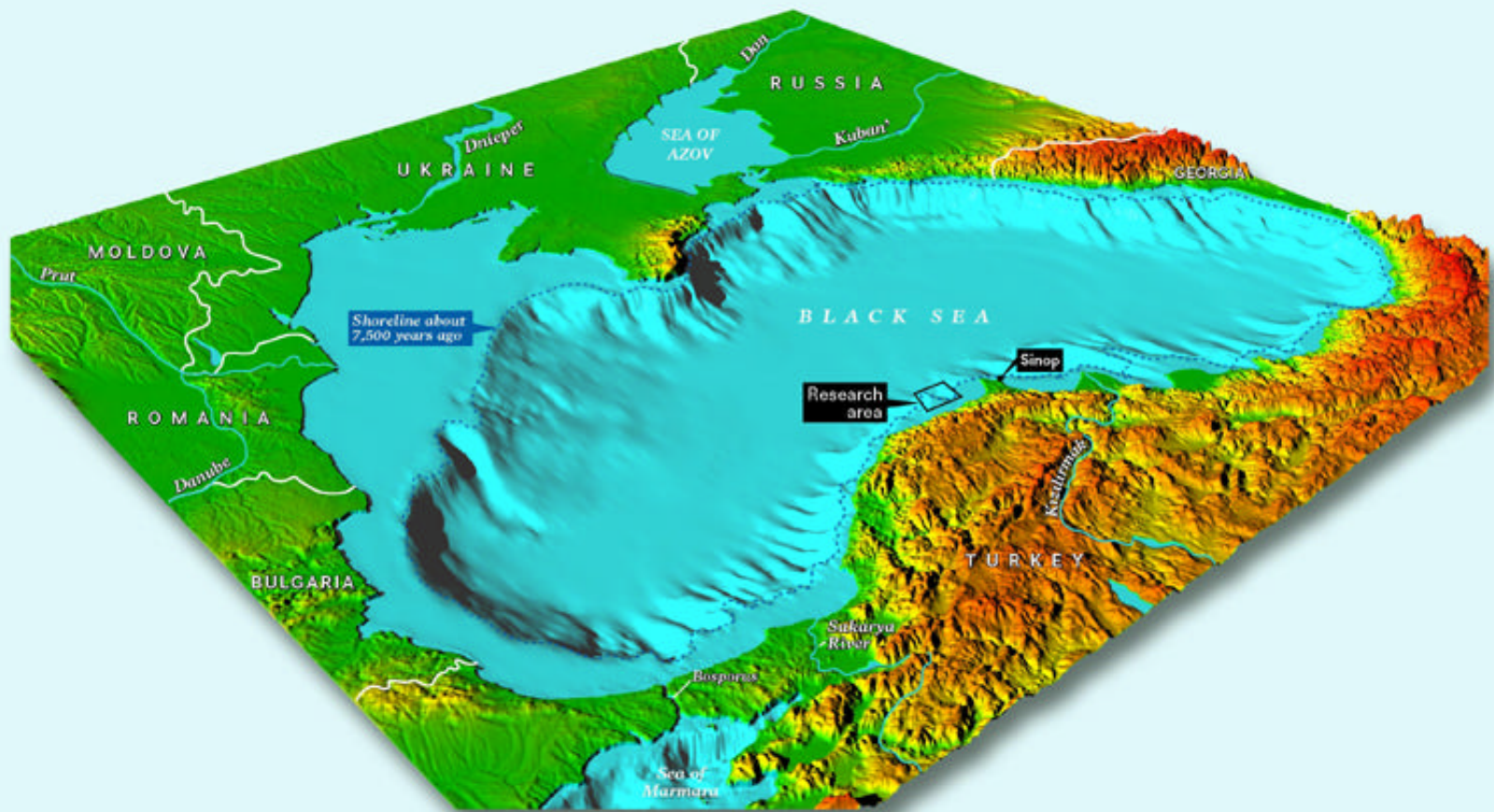


Side view, Black Sea shipwreck 'D'.
Not to scale. Drawing: C. Ward



Shipwreck D, Black Sea. Sketch plan.
Not to scale. Drawing: C. Ward





Scale varies in this perspective.
3D COMPUTER MODEL BY PETER W. SLOSS/NATIONAL
GEOGRAPHIC DATA CENTER/NOAA
© 2000 NATIONAL GEOGRAPHIC MAPS







