

Ridge 2000 Program

Program Update

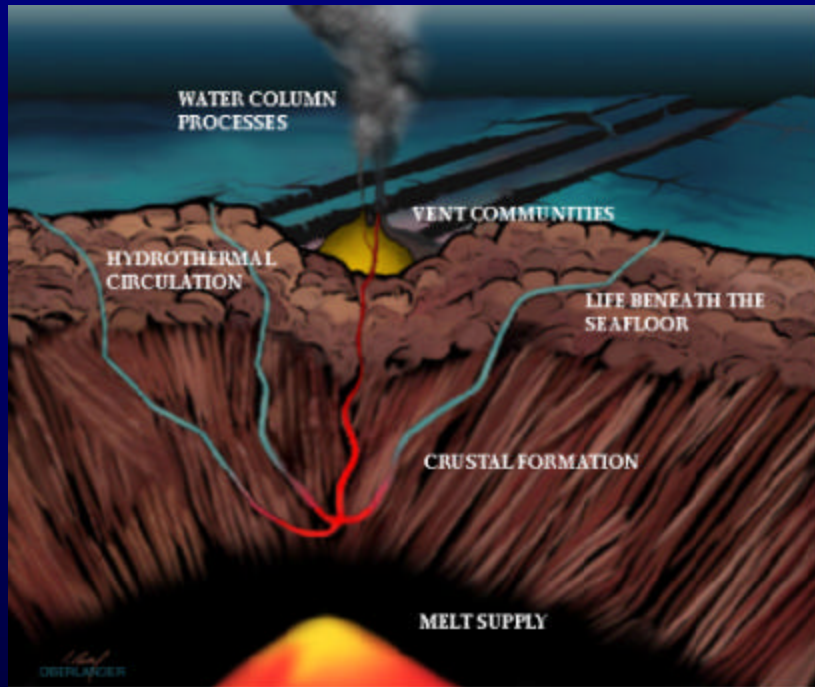
Ridge 2000 began Oct 2001

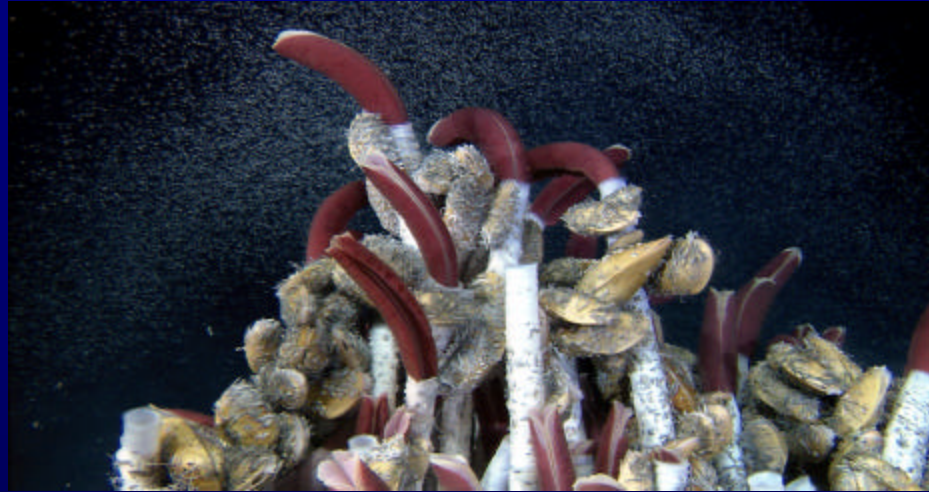
One year into planned 12
year program

Two themes

Time Critical Studies

Integrated Studies





Rich Lutz, Steven Low, WHOI

Three initial ISS

8-11 N EPR

Endeavour segment
of the JdFR

East Lau back-arc
spreading center

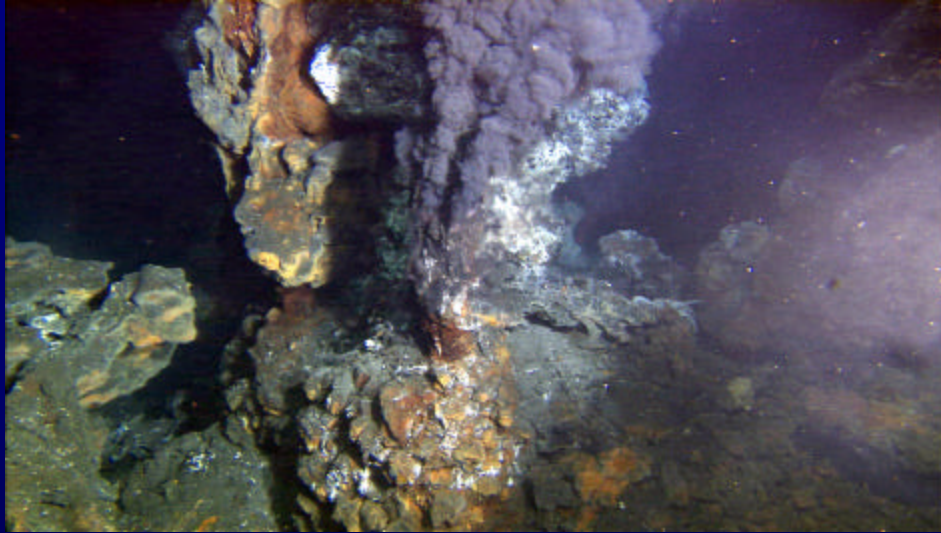
Two major workshops

Implementation Plans published July 15 on R2k website

R2k Data Policy approved

August 15 –1st target date for postdoc, data management
and ISS proposals

Ridge 2000 Program



Rich Lutz, Steven Low, WHOI

Budget

Currently \$9.5M –includes office and ship costs

Coming Soon

Revised R2k Science Plan

The first R2k Newsletter

Upcoming Workshops

Fall 2003 –MAR site selection workshop (Providence, RI)

June 2003 –Exploratory studies workshop (with ChEss, InterRidge and NOAA's OE (SOC))

Aug/Sept 2003 –Iceland Summer School: Magmatic-Tectonic Interaction

2004 –RTI (with InterRidge) Back-arc spreading centers (Korea)

Ridge 2000 Program



Rich Lutz, Steven Low, WHOI

R2k Field Programs

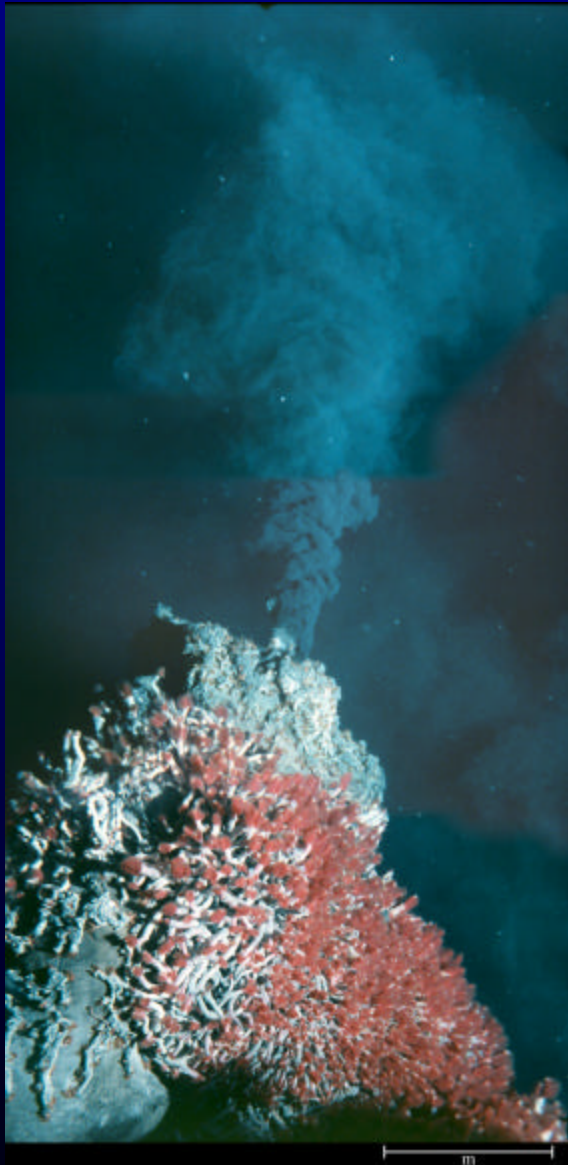
2004 will be first season for ISS cruises

Anticipate 3 legs in Lau Basin (use of ROV, AUV, more)

Continuous work at EPR and Endeavour (continued use of NDSF vehicles and instruments)

NDSF is essential for the success of R2k!

Ridge 2000 Program



See the R2k website for more info:

r2k.bio.psu.edu

Please stop by the R2k booth

See the Deep Sea Issue of
Geotimes (December)

Attend the Ridge 2000 Smoker!
5:30-8:00pm, Fri Dec 8,
Marriott Hotel