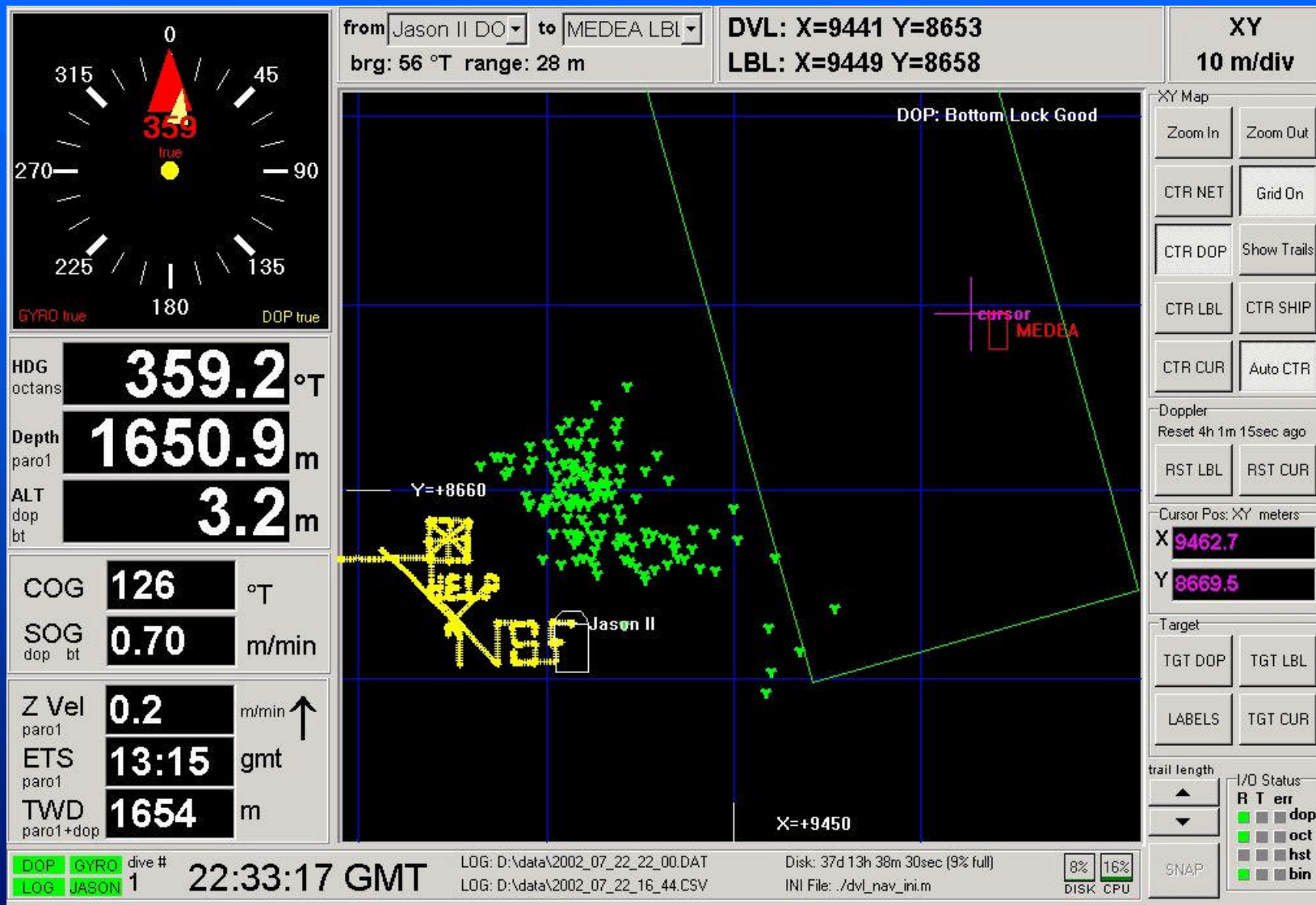


# 2002 Jason Operations

- 250 lbs. of payload, with total tool sled
- Multiple 24,48 and 240 VDC power circuits
- RS232/485, Hispeed RS422 and Ethernet
- Two spatially correspondent master-slave manipulators
- 5 auxiliary hydraulic circuits with flows to 6GPM and pressures to 3000 psi.
- 500 lbs. of thrust in each axis
- Large telescoping sample drawer with two side mounted swing arms



# 2002 Jason Operations

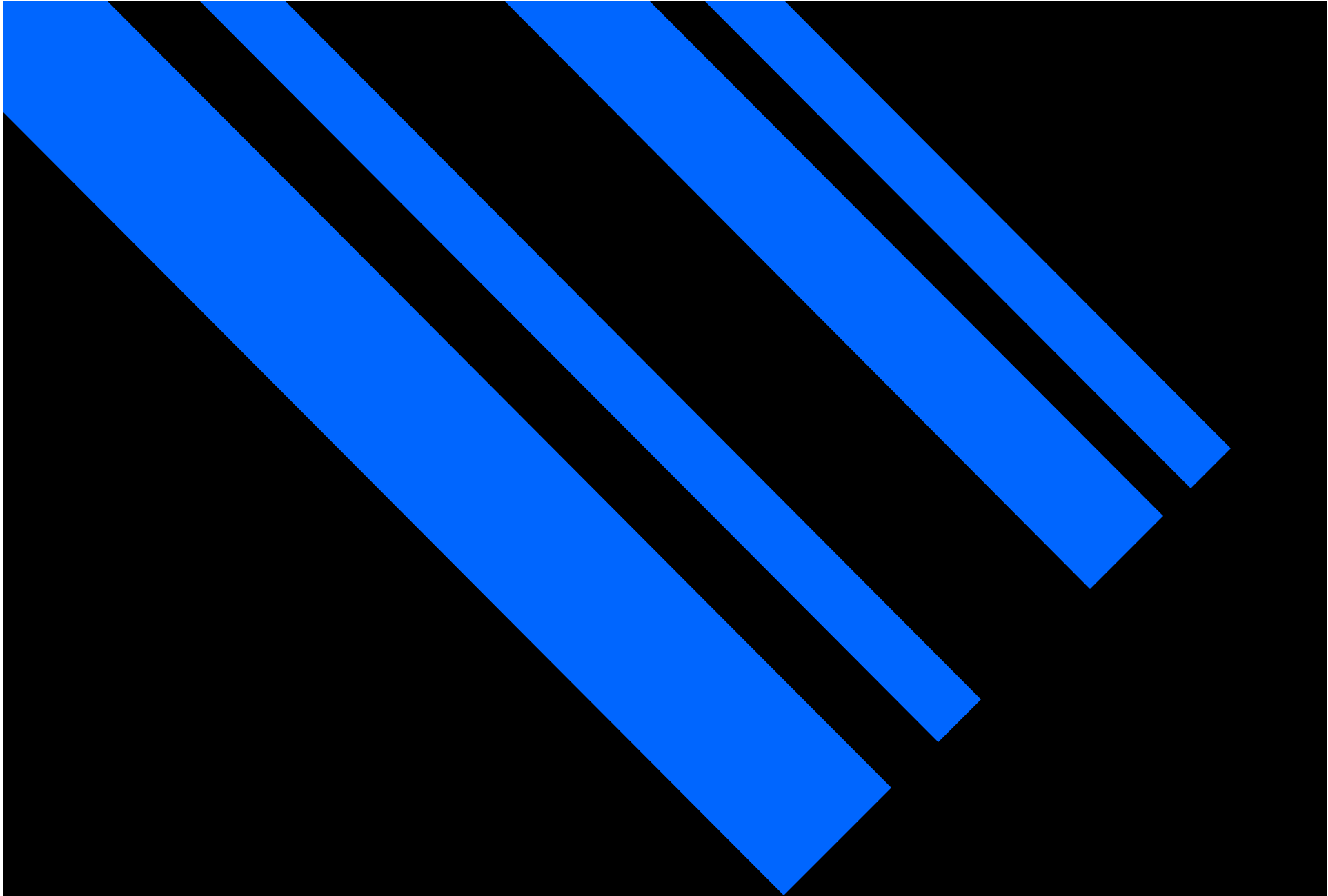


# 2003 ROV Projects

---

- Addition of Doppler and SM2000 to DSL120
- Work to correct difficulties with Kraft Manipulators
  - Manufacturing and quality control
  - Grip linkage
  - Pressure transducers
- Formalize pilot training policies
- Launch/Recovery crane swing damping
- Improvements to science observation vision system
- Data logging manuals and precruise science training material
- DVD recording and improved control van displays
- Dedicated “major” water samplers
- Improve payload and trim
- Acoustic Navigation - report for June DESSC





*National Deep Submergence Facility*  
*[www.whoi.edu/marops](http://www.whoi.edu/marops)*

# 2002 Jason Operations

---

*National Deep Submergence Facility*  
[www.whoi.edu/marops](http://www.whoi.edu/marops)



# 2002 Jason Operations

---

*National Deep Submergence Facility*  
[www.whoi.edu/marops](http://www.whoi.edu/marops)



# 2002 Jason Operations

---

*National Deep Submergence Facility*  
[www.whoi.edu/marops](http://www.whoi.edu/marops)

