

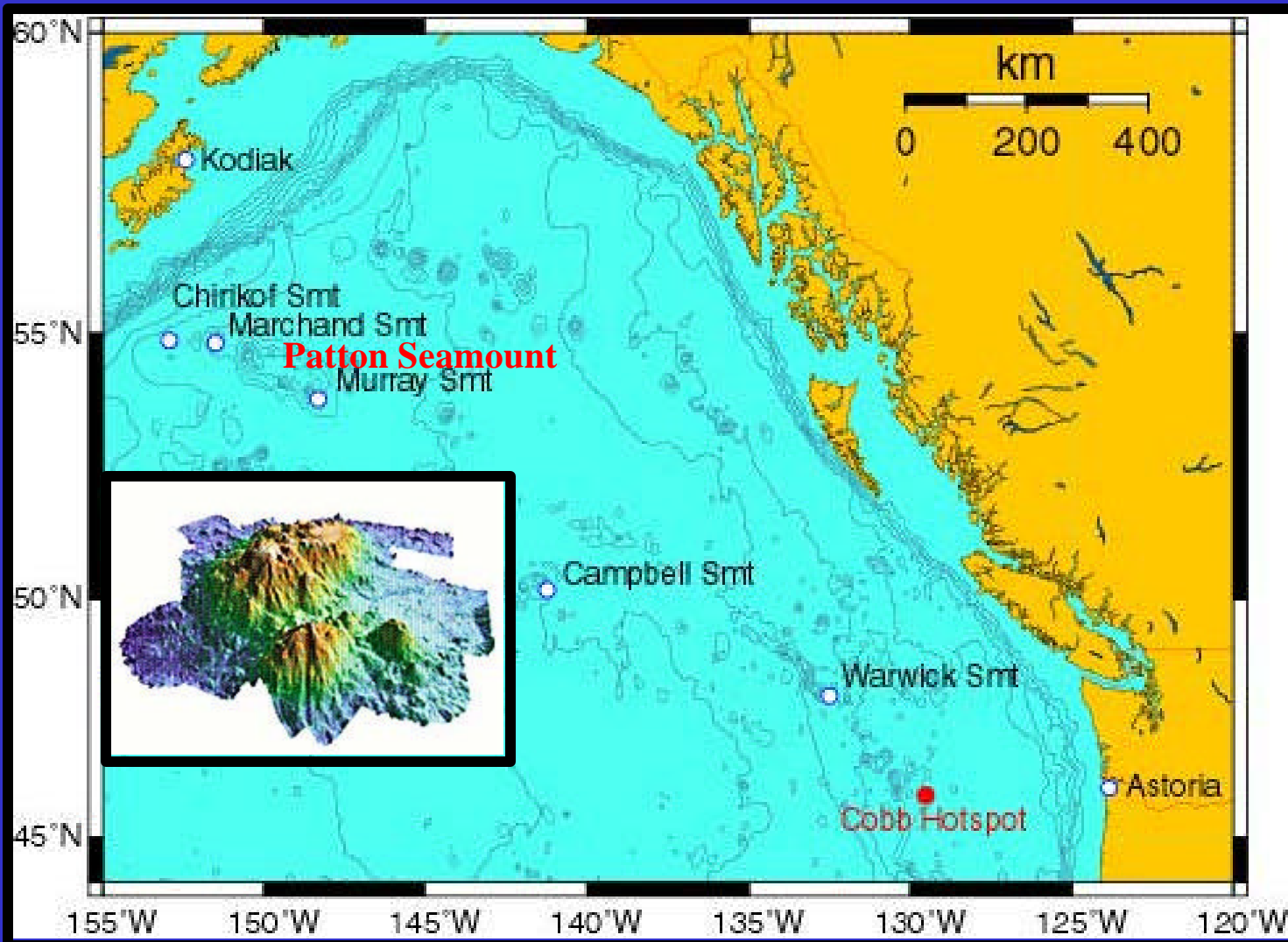
GOASEX: Gulf of Alaska Seamount Exploratio Crab Distributions

Thomas C. Shirley

Bradley Stevens

Univ. of Alaska Fairbanks

NMFS, NOAA, Kodiak

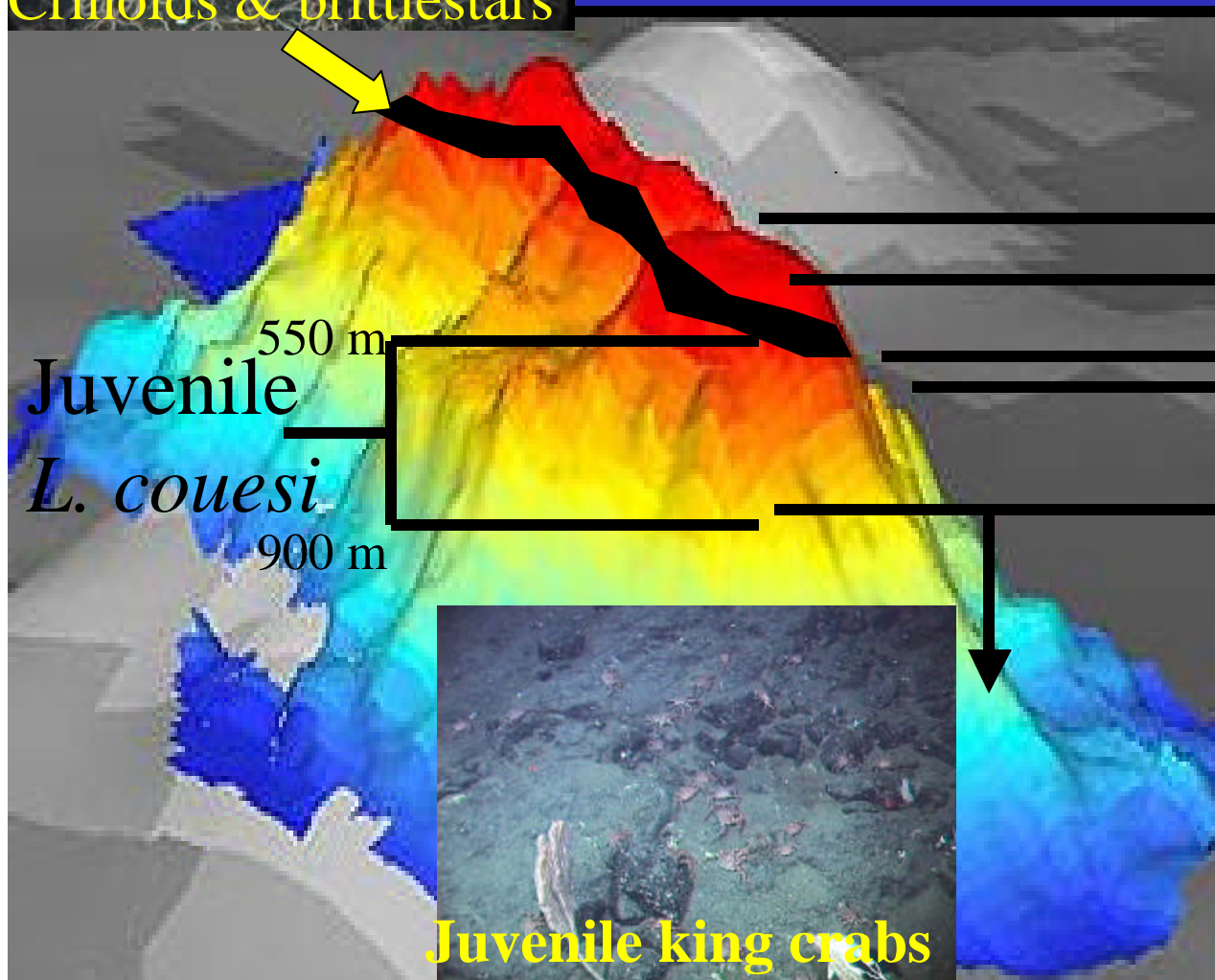


EXPLORE

Thanks:
Zac Hoyt
Julie Nielsen
Taylor Heyl
Won Park
A. Baldwin

Crab Depth Distributions

Juveniles had narrow depth ranges, below adults and suspension feeders



Adult
GKC

250
400

583 m
623 m Juvenile

> 950 m GKC

Adult *M. macrochira*