



R/V Roger Revelle EM120 Installation

- ⌘ Built 1996
- ⌘ Length: 273' 8"
- ⌘ Beam: 52 '6"
- ⌘ Draft, Full: 17 '
- ⌘ Cruising Speed: 12 kts
- ⌘ Crew: 22

- ⌘ Scientific Party: 37



19 November 2002

Shipboard Technical Support



R/V Roger Revelle EM120 Installation



19 November 2002

Shipboard Technical Support



R/V Roger Revelle EM120 Installation



19 November 2002

Shipboard Technical Support



R/V Roger Revelle EM120 Installation



19 November 2002

Shipboard Technical Support



R/V Roger Revelle EM120 Installation



19 November 2002

Shipboard Technical Support



R/V Roger Revelle EM120 Installation



19 November 2002

Shipboard Technical Support



R/V Roger Revelle EM120 Installation



19 November 2002

Shipboard Technical Support



R/V Roger Revelle EM120 Installation



19 November 2002

Shipboard Technical Support



R/V Roger Revelle EM120 Installation



19 November 2002

Shipboard Technical Support



R/V Roger Revelle EM120 Installation

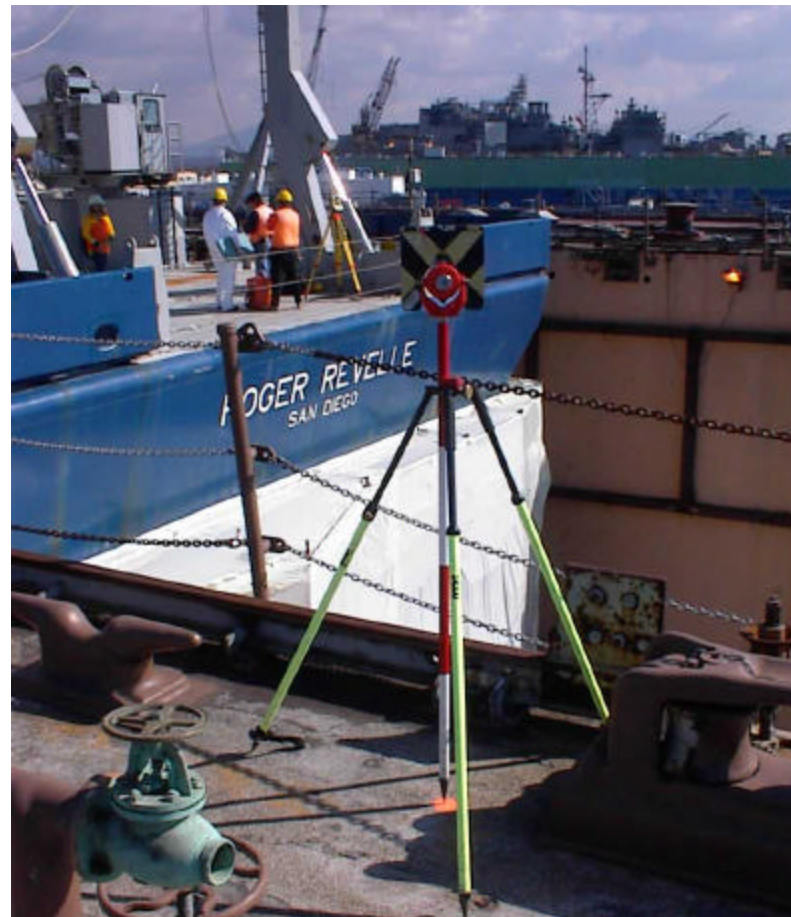


19 November 2002

Shipboard Technical Support



R/V Roger Revelle EM120 Installation



19 November 2002

Shipboard Technical Support



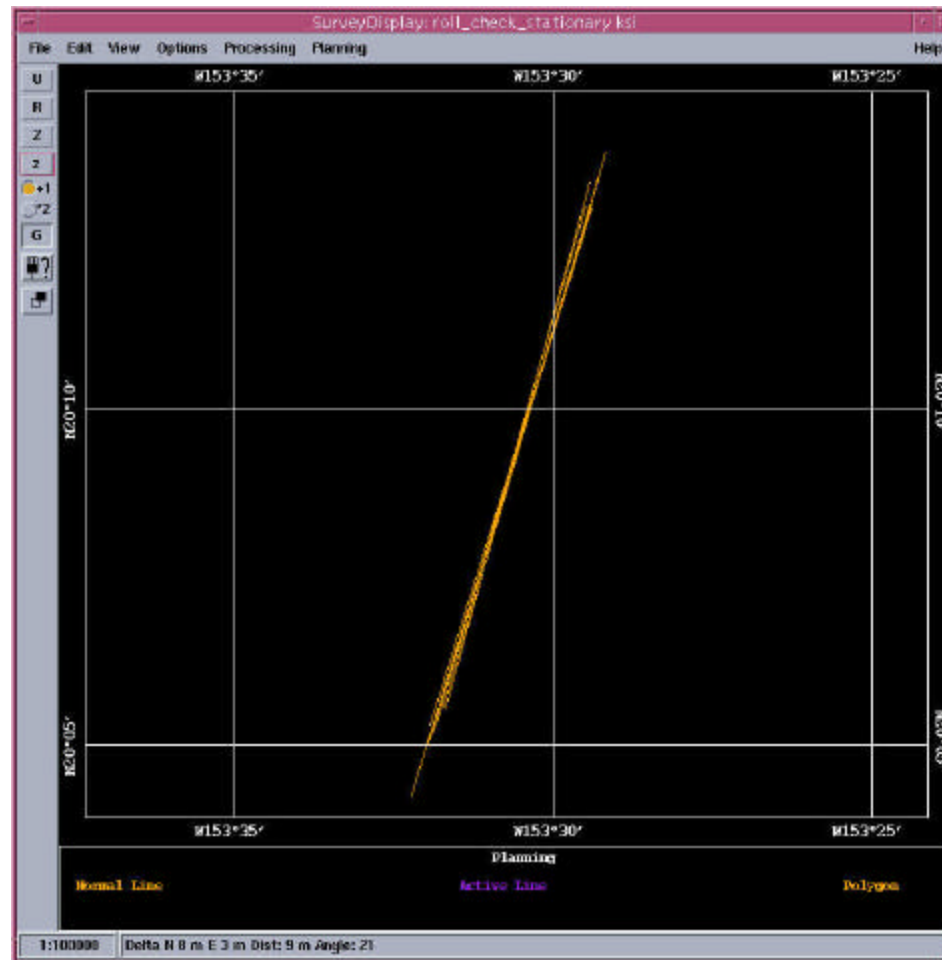
R/V Roger Revelle EM120 Installation



19 November 2002

Shipboard Technical Support

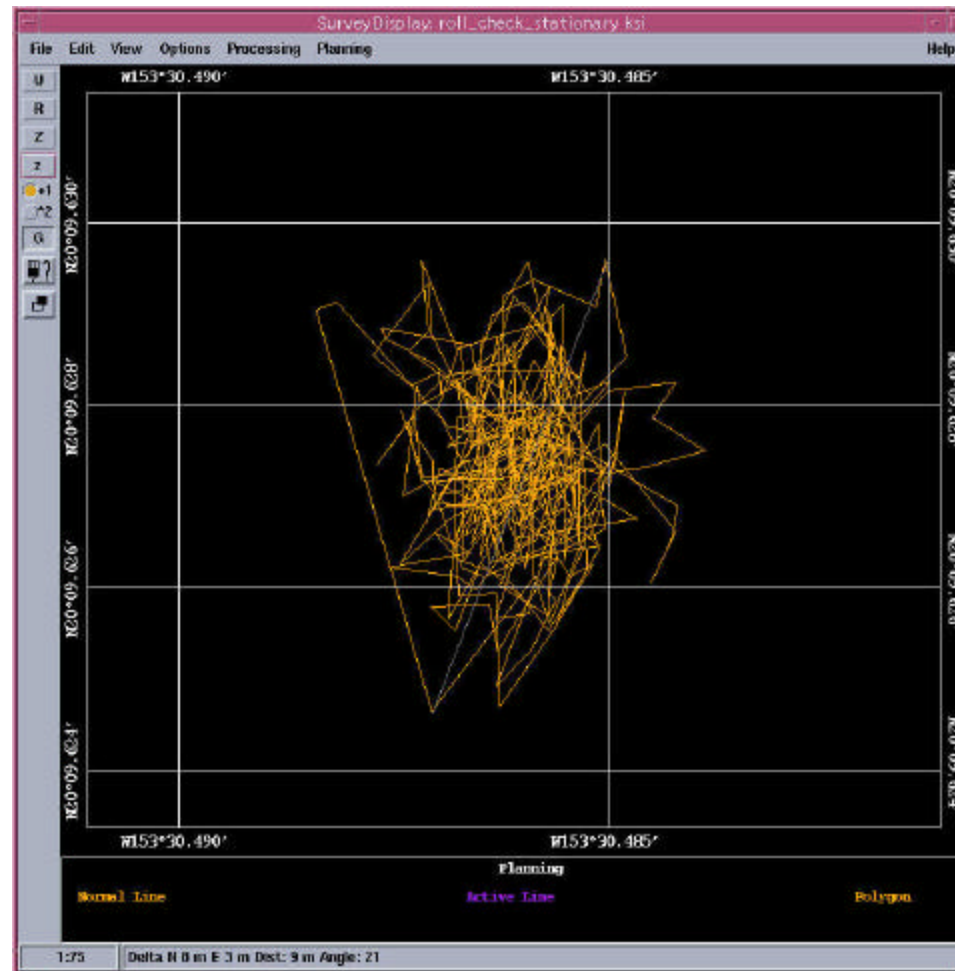
R/V Roger Revelle EM120 Installation



19 November 2002

Shipboard Technical Support

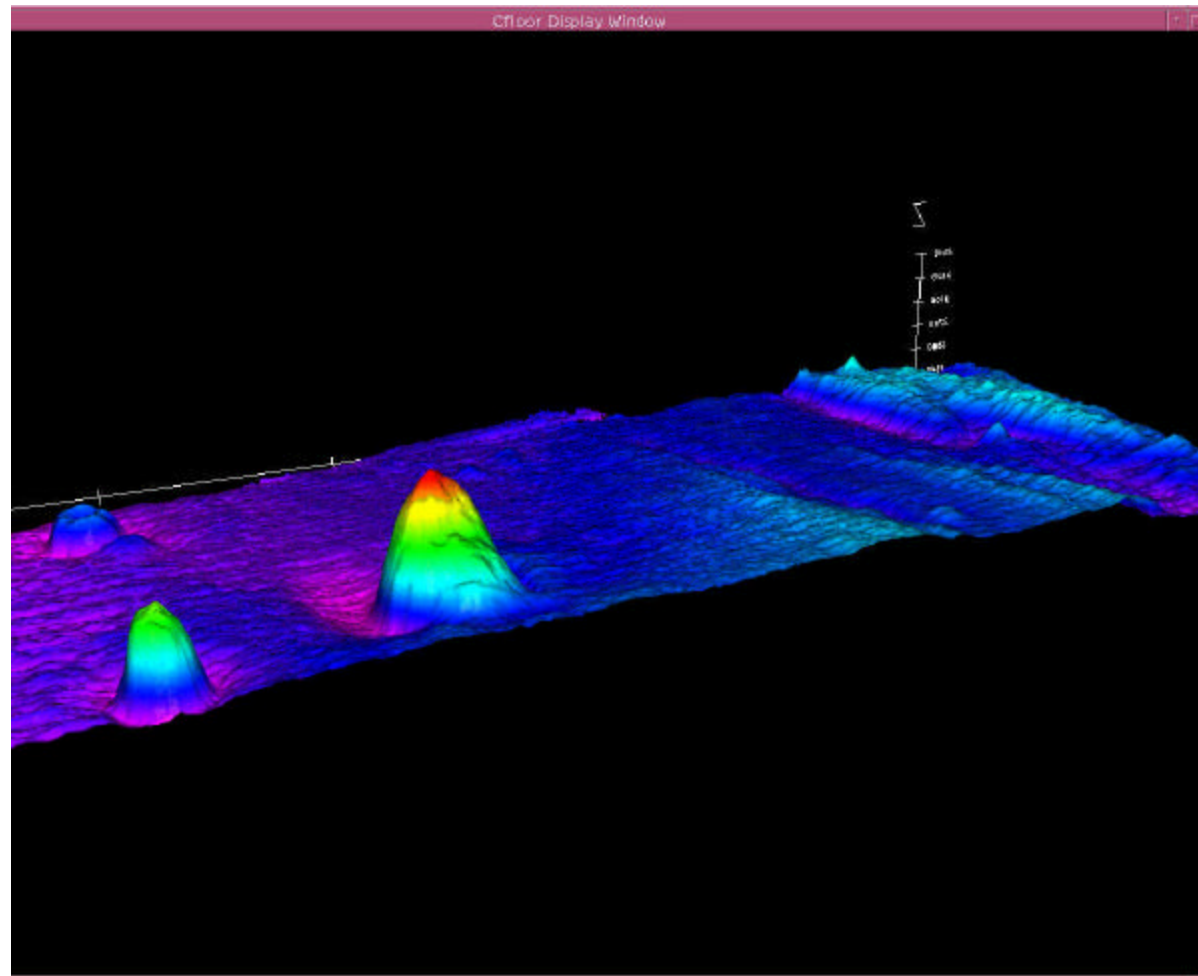
R/V Roger Revelle EM120 Installation



19 November 2002

Shipboard Technical Support

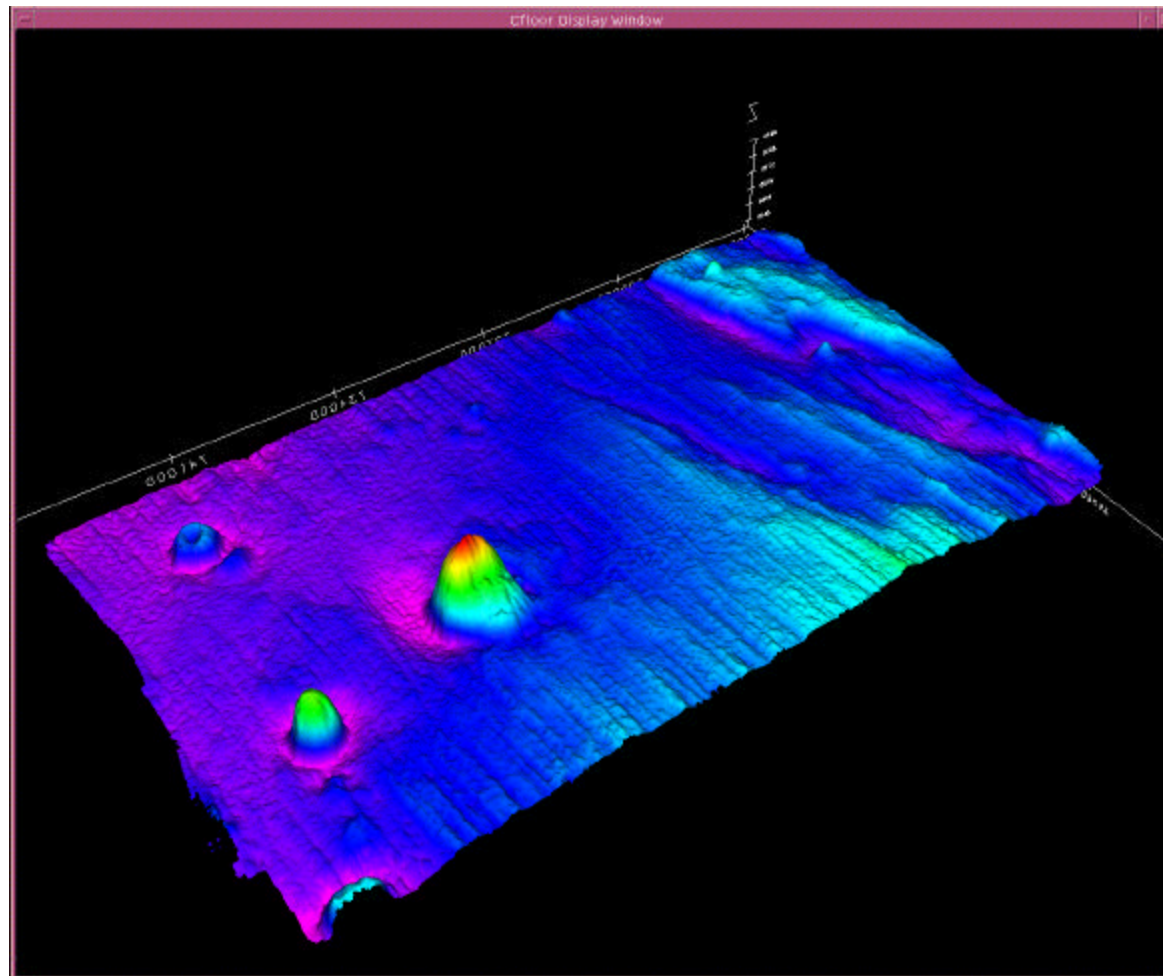
R/V Roger Revelle EM120 Installation



19 November 2002

Shipboard Technical Support

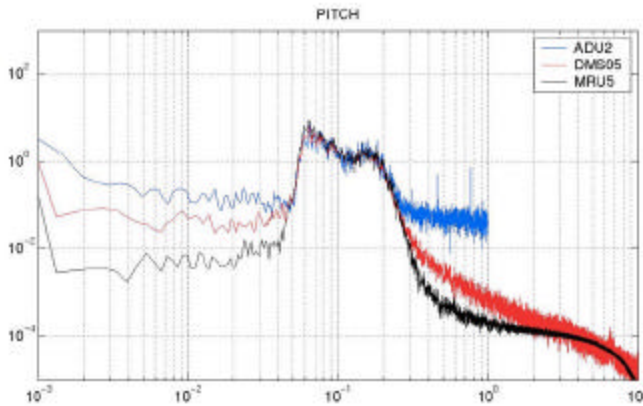
R/V Roger Revelle EM120 Installation



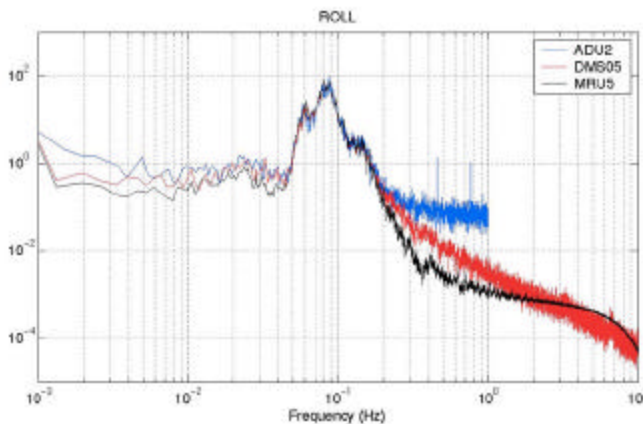
19 November 2002

Shipboard Technical Support

R/V Roger Revelle EM120 Installation

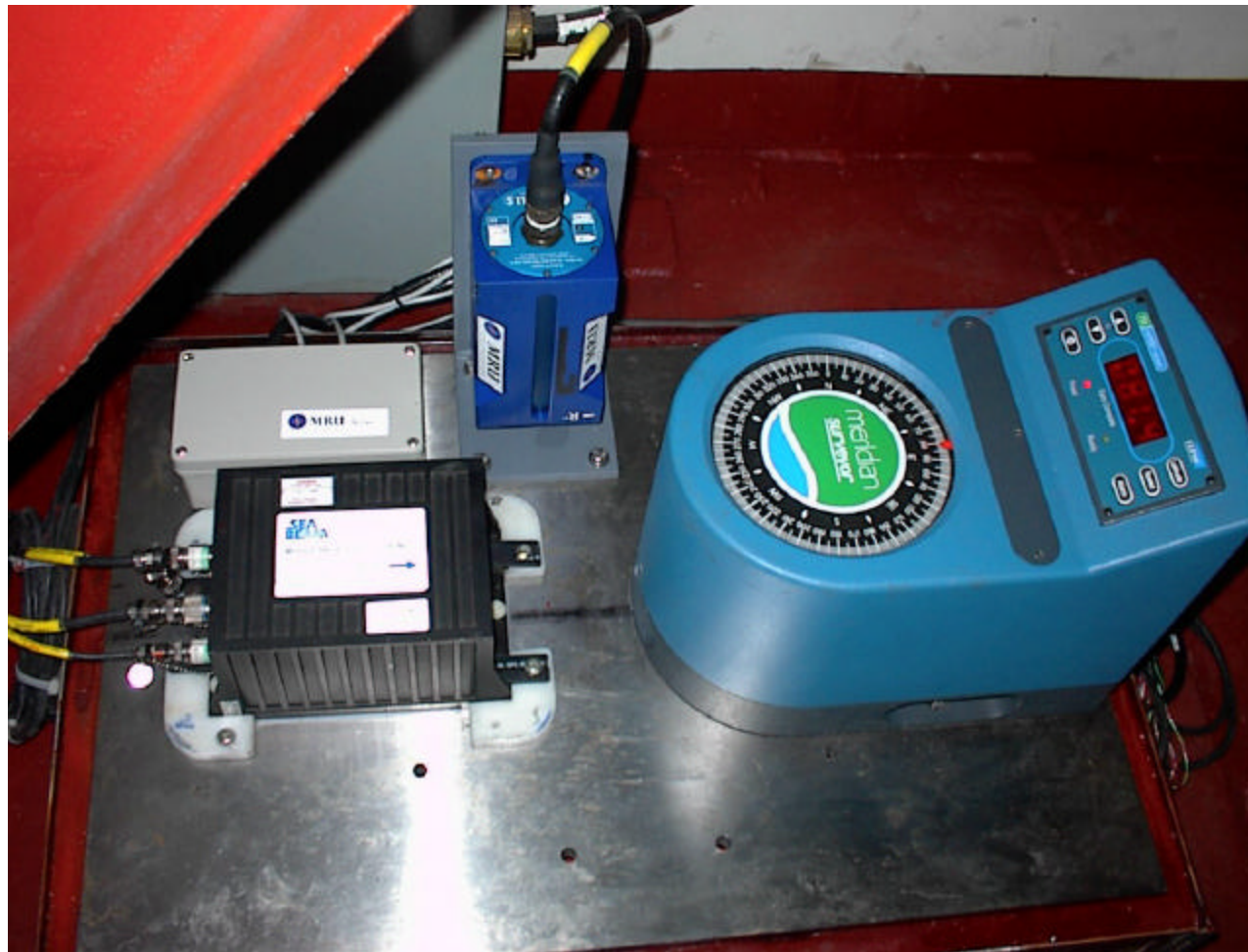


Synchronous comparison
of the frequency responses
for 3 motion sensors
aboard R/V Roger Revelle:



- Ashtech ADU2 (2 Hz)
- TSS DMS05 (167 Hz)
- Seatex MRU5 (100 Hz)

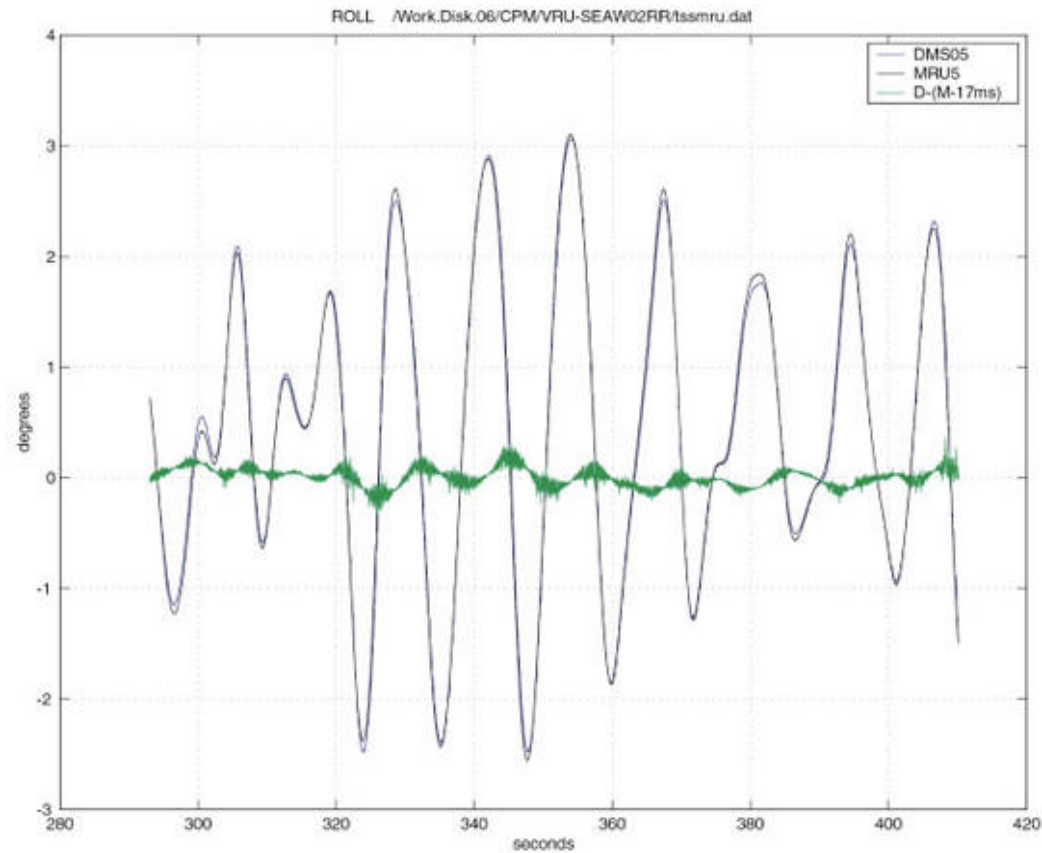
R/V Roger Revelle EM120 Installation



19 November 2002

Shipboard Technical Support

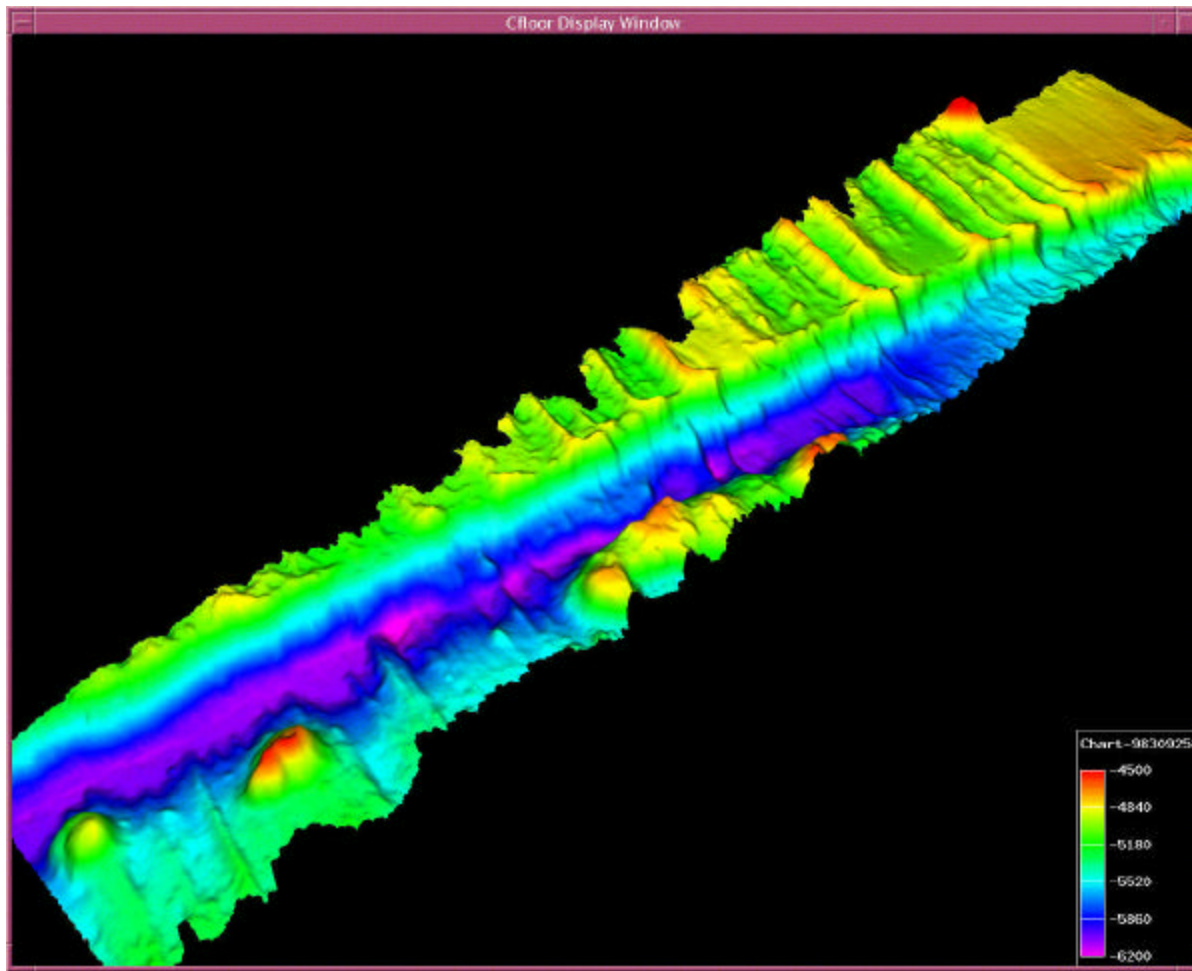
R/V Roger Revelle EM120 Installation



19 November 2002

Shipboard Technical Support

R/V Roger Revelle EM120 Installation



19 November 2002

Shipboard Technical Support