

# R/V Kilo Moana

- Dates
- Players
- Data Philosophy
- Equipment Installation
- Underway Use



- 24 June - **Delivery**
- 25 June- 24 July  
load out, JAX FI.
- 25 July - 03 Sep  
\*Mission Demo/Sci. Trials  
\*Canal transit
- 12 Sept - NSF Insp
- 22 Sept –  
**begins** non-testing  
science legs (25days)

# Dates



# Players



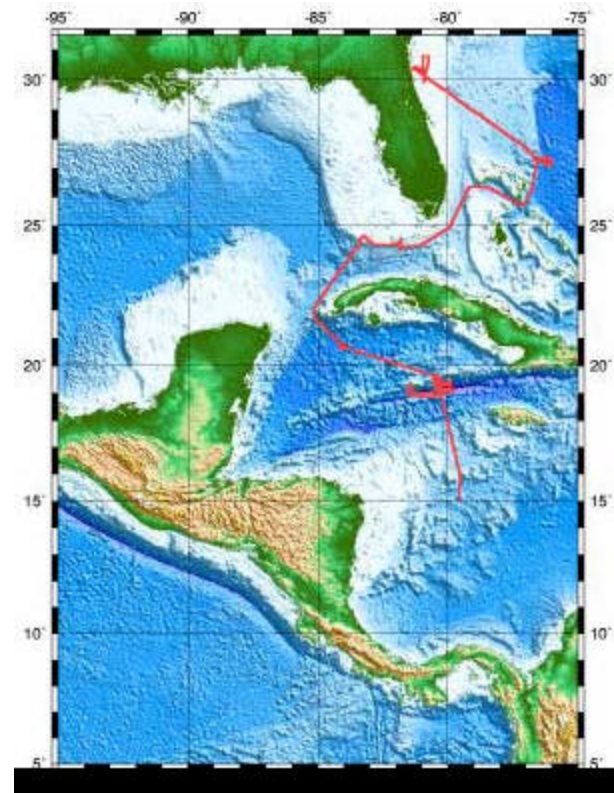
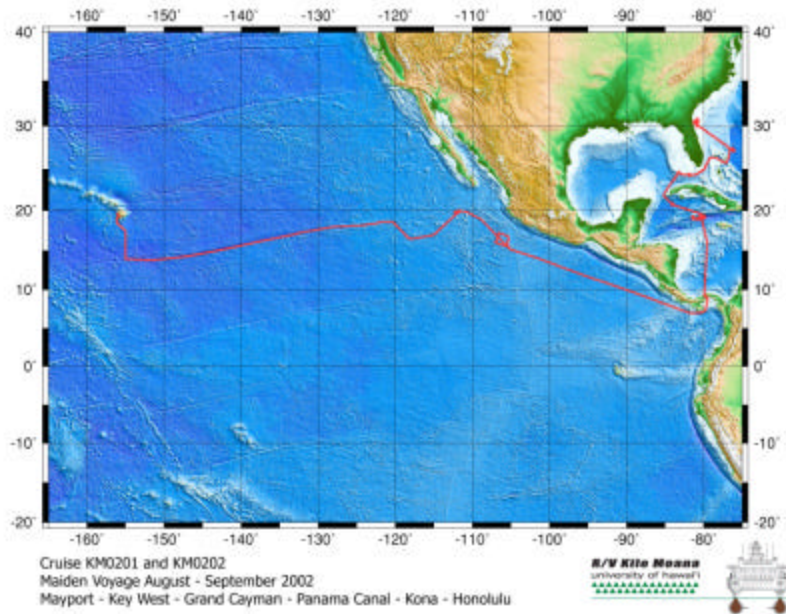
- ONR - built for
- Lockheed - Contractor
- AMI – Boat builder
- EDI – Controls/Noise
- Guido Perla – **Detail Design**



UH -Outfitting JAX – 9 techs  
(HMRG-4; STAG-2; RCF-3)

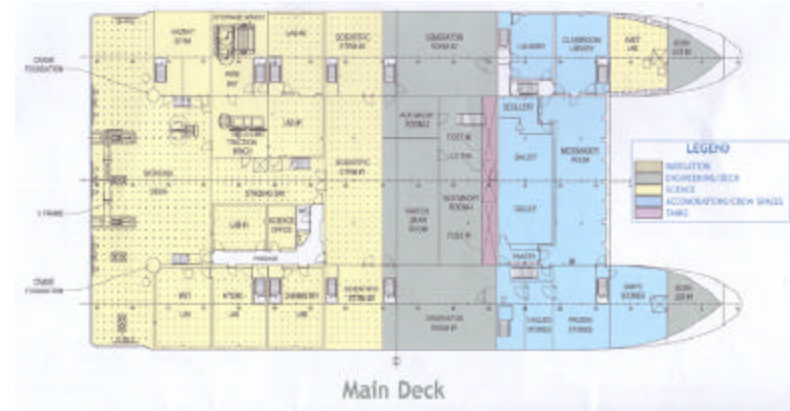
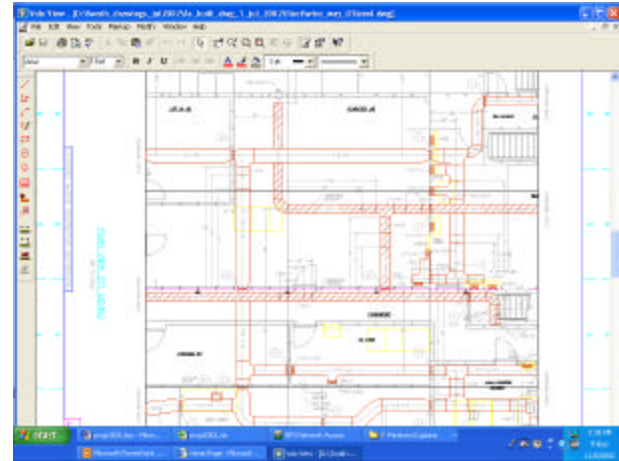
UH-SeaTrials – 9 techs  
(HMRG-5; STAG-3; RCF-1)

# Cruise Track



# Data Philosophy

- Data Everywhere  
Network
- Raw Data Available  
Everywhere
- Processed Data  
Available Everywhere



# Equipment Installation in 4wks

- SIS
- Communications
- CTD System
- XBT System
- Clean SeaWater
- Thermosal.
- 4kHz Knudsen
- Gravimeter
- Data Distribution



# Equip - SIS

- Racks, 4 pt.
- Loggers & Wk stns
- Gen Purpose PCs
- Fiber Patch Panel
- Fiber-Electrical Netwk
- Routers/Switches
- SVGA → Video
- 15"/17" Video TVs



# Equip - Comms

- Phone System
- Email – Inmarsat B  
Felcom 81 w/HS modem
- Email - Iridium





# Equip - CTD

- Junction Boxes
- Cable Continuity
- Remote Winch Read
- Deployment



# Equip - XBT

- Sippican XBT system MK21
- Lab #1, main deck
- Data transferred automatically to multibeam
- Handheld Launcher
- Use T5 – 1830m depth  
T7 – 760m depth  
T10 – 200m depth

# Equip-Clean Seawater

- Install SBE 38 Ext Temperature Sensor
- Install Temp Sensor discharge piping
- 20 Gals/min flow
- Install Sink Spigots

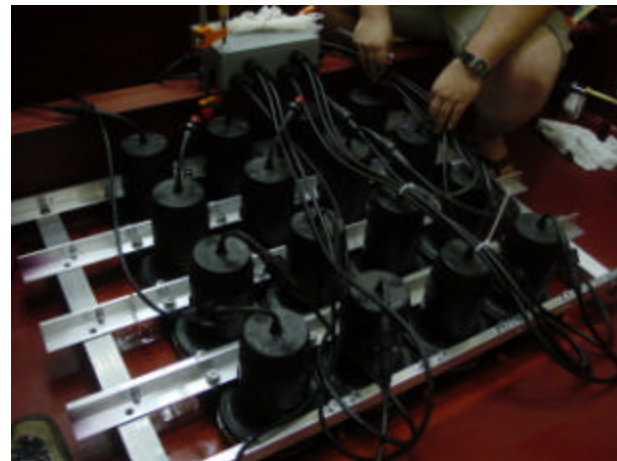


# Equip - Thsl

- IMET Lab Install
- Install all PVC
- Install Flow meters
- Install valves
- Install discharge
- Install Seapoint Fluoro (w/Natl FieldPoint A/D)

# Equip – Knudsen 4kHz

- 4x4 4kHz 1075A  
Massa Transducers
- Knudsen 320 B/R  
deckbox
- Silicone Pad
- Rhodisil Oil
- Aluminum Frame
- Magnets

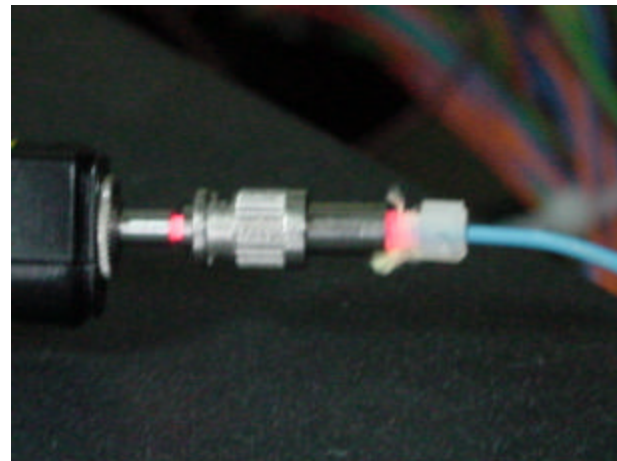


# Equip - Gravimeter

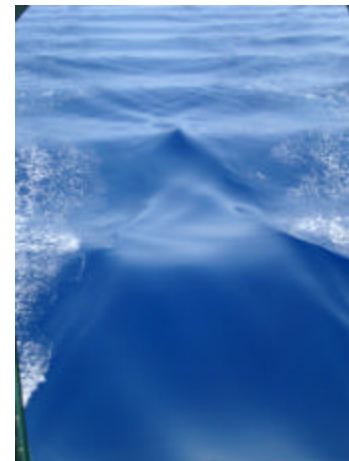
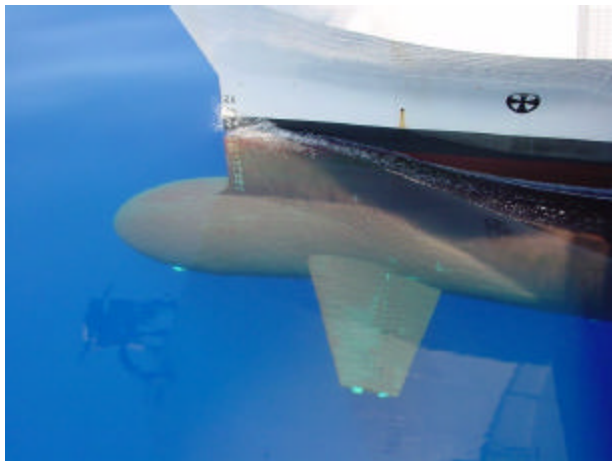
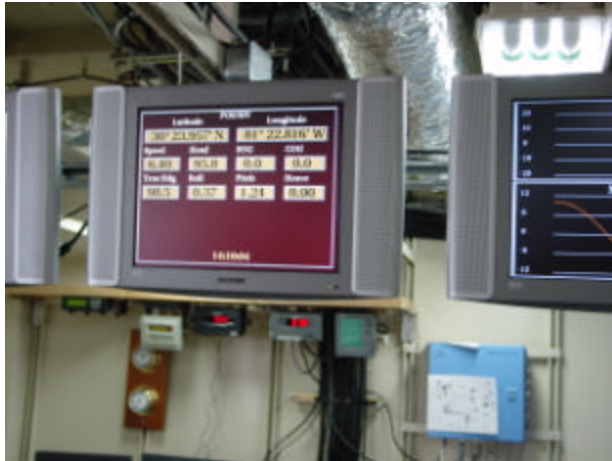
- LaCoste & Romberg S33 Marine Meter
- Installed in Science store #1 on center line of vessel
- Ran successfully from JAX to HNL

# Equip Data Dist.

- Integrating Data sets
- Fiber Issues
- Installing TV monitors
  - Labs & Staterooms
- Installing Lab Loggers and Gen Purpose PC
- Making cables
  - 10BaseT, Coax, Fiber
- daf

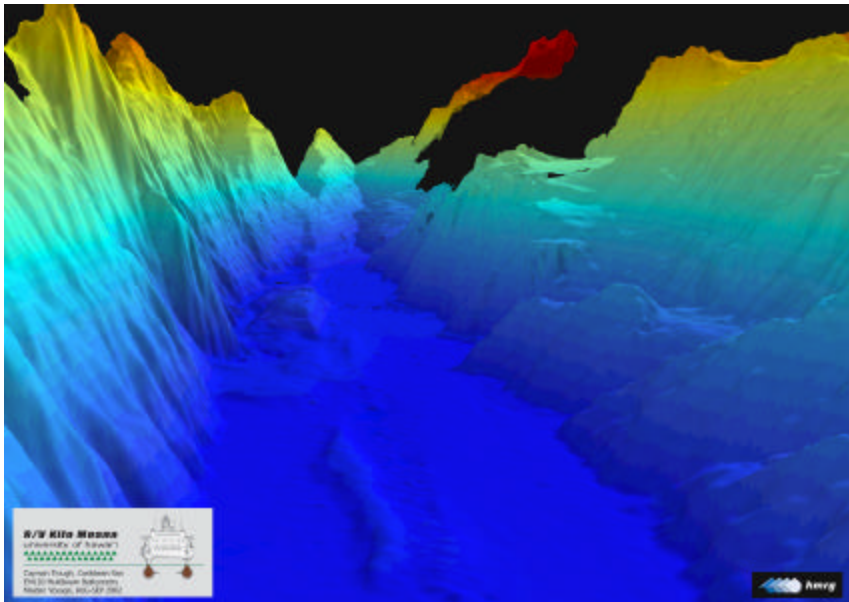
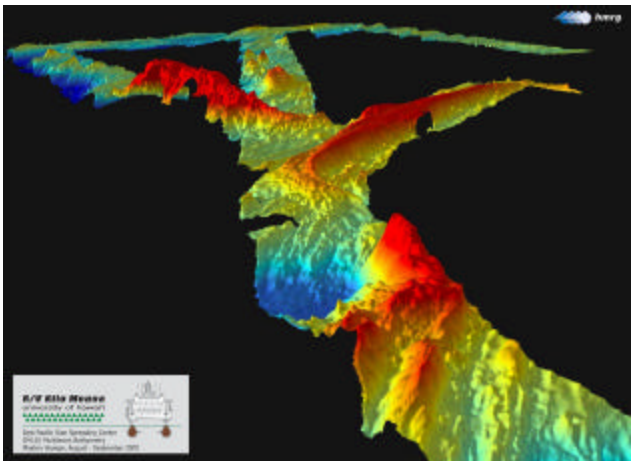
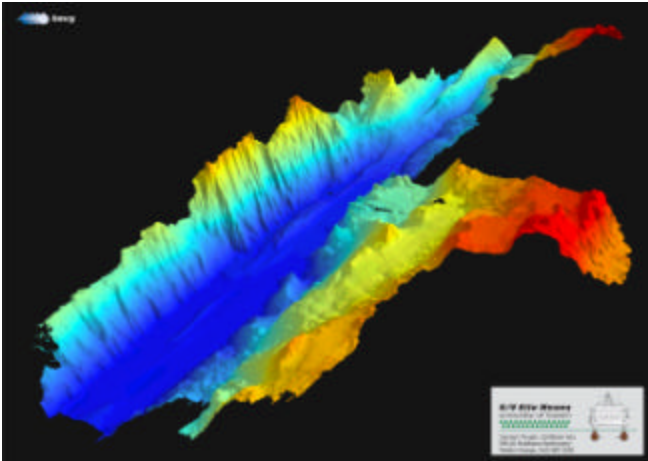


# Other Stuffs





# Underway



# Honolulu Harbor

