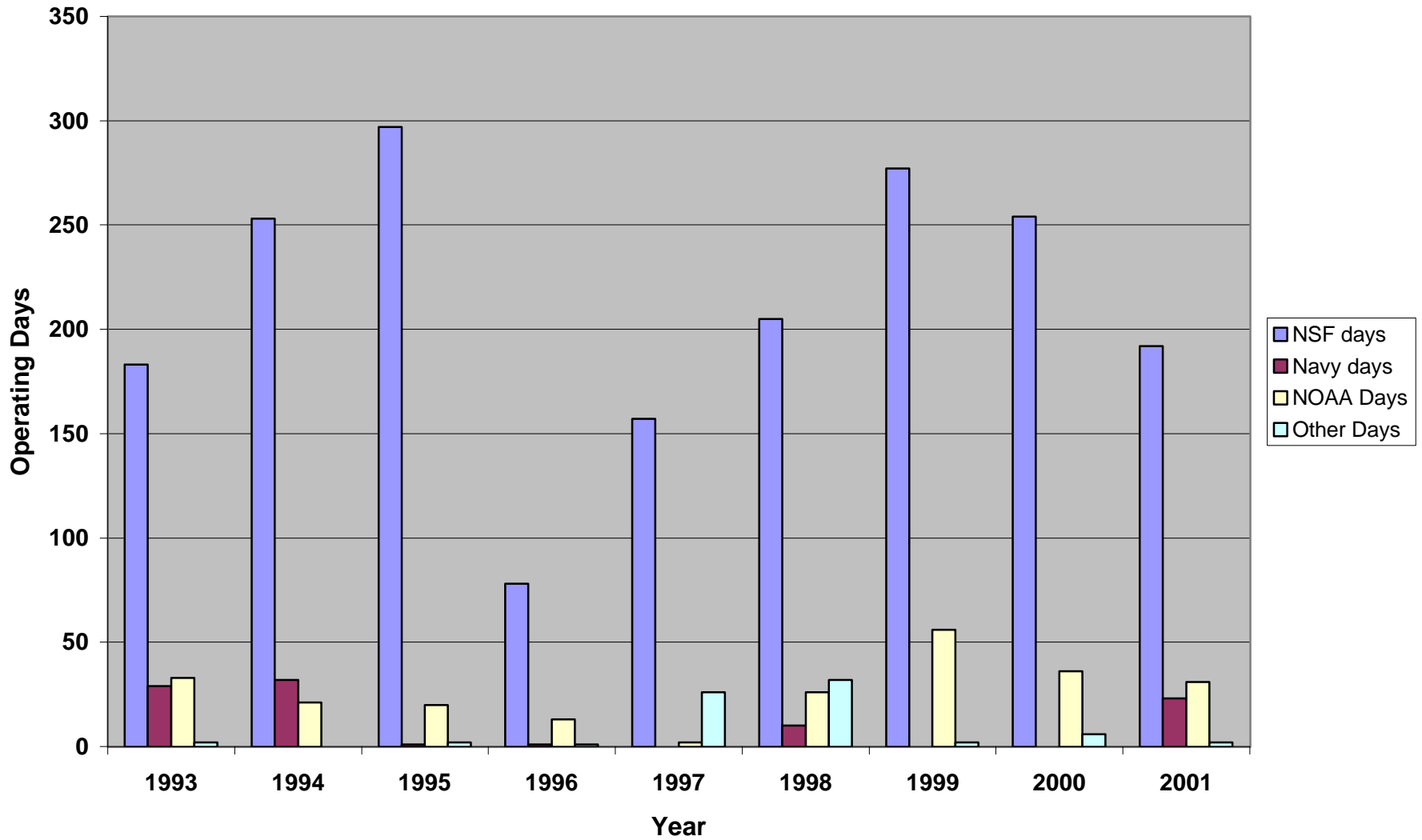
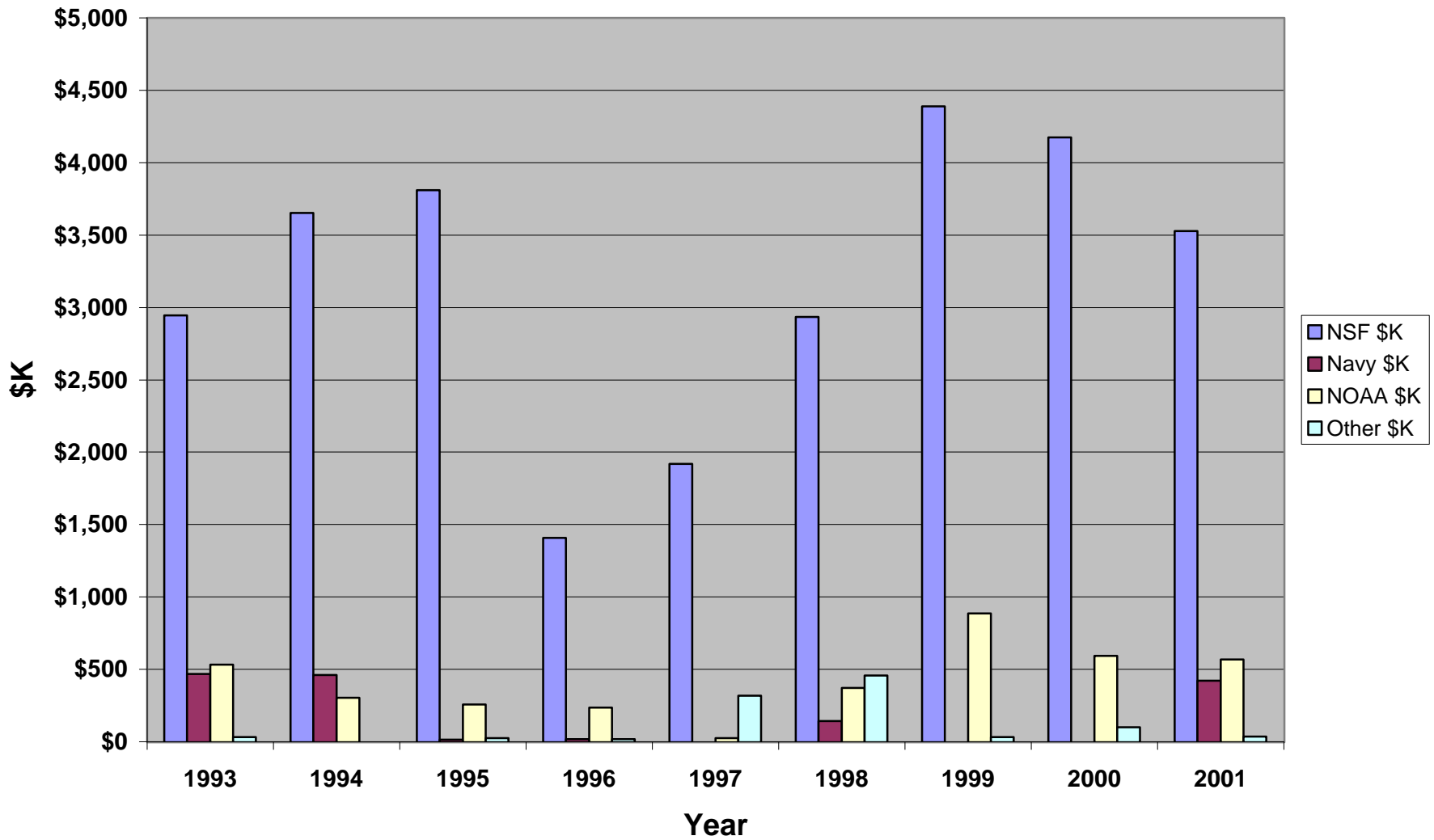


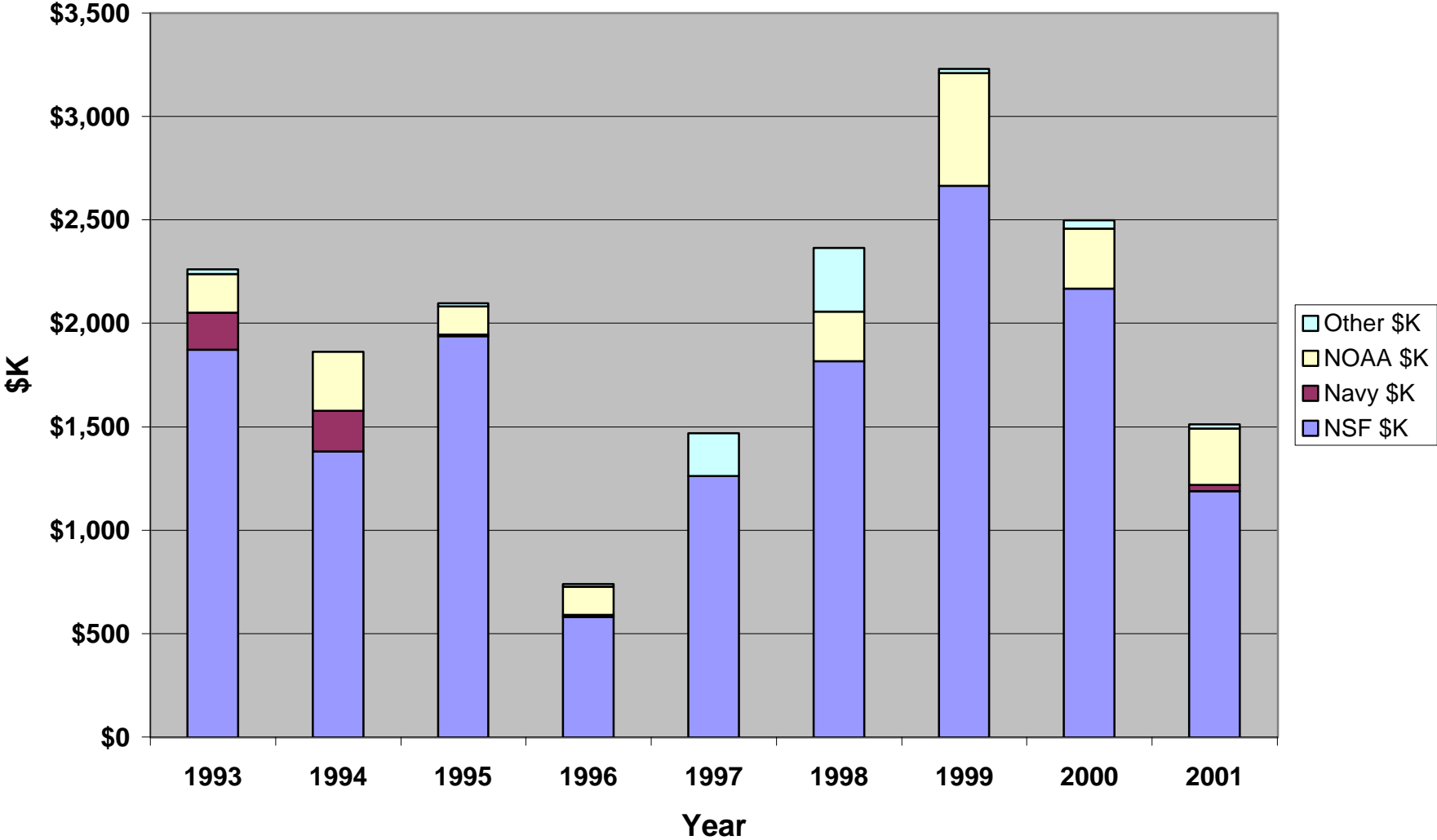
ATLANTIS Operating Days: 1993-2001



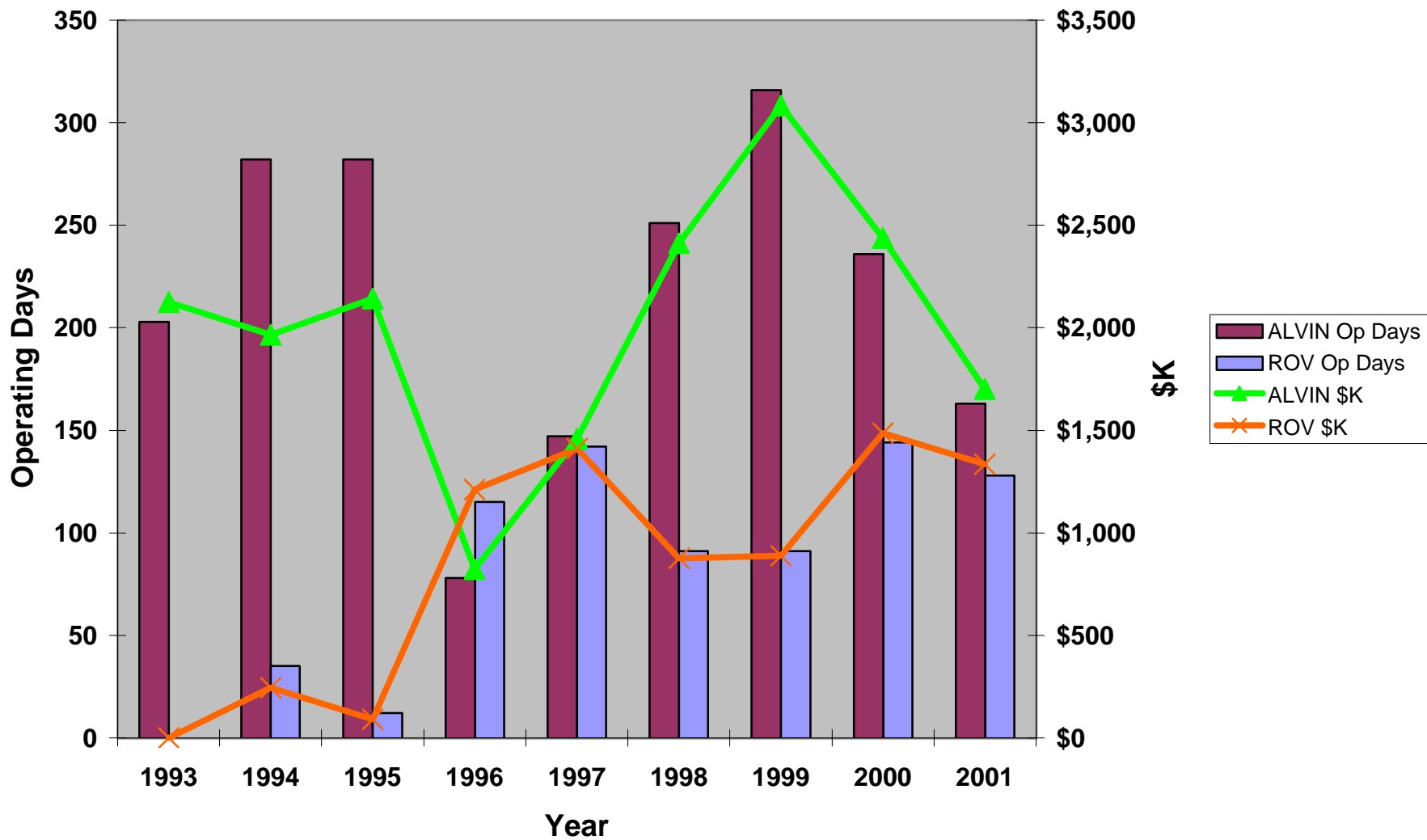
ATLANTIS Funding Support by Agency: 1993-2001



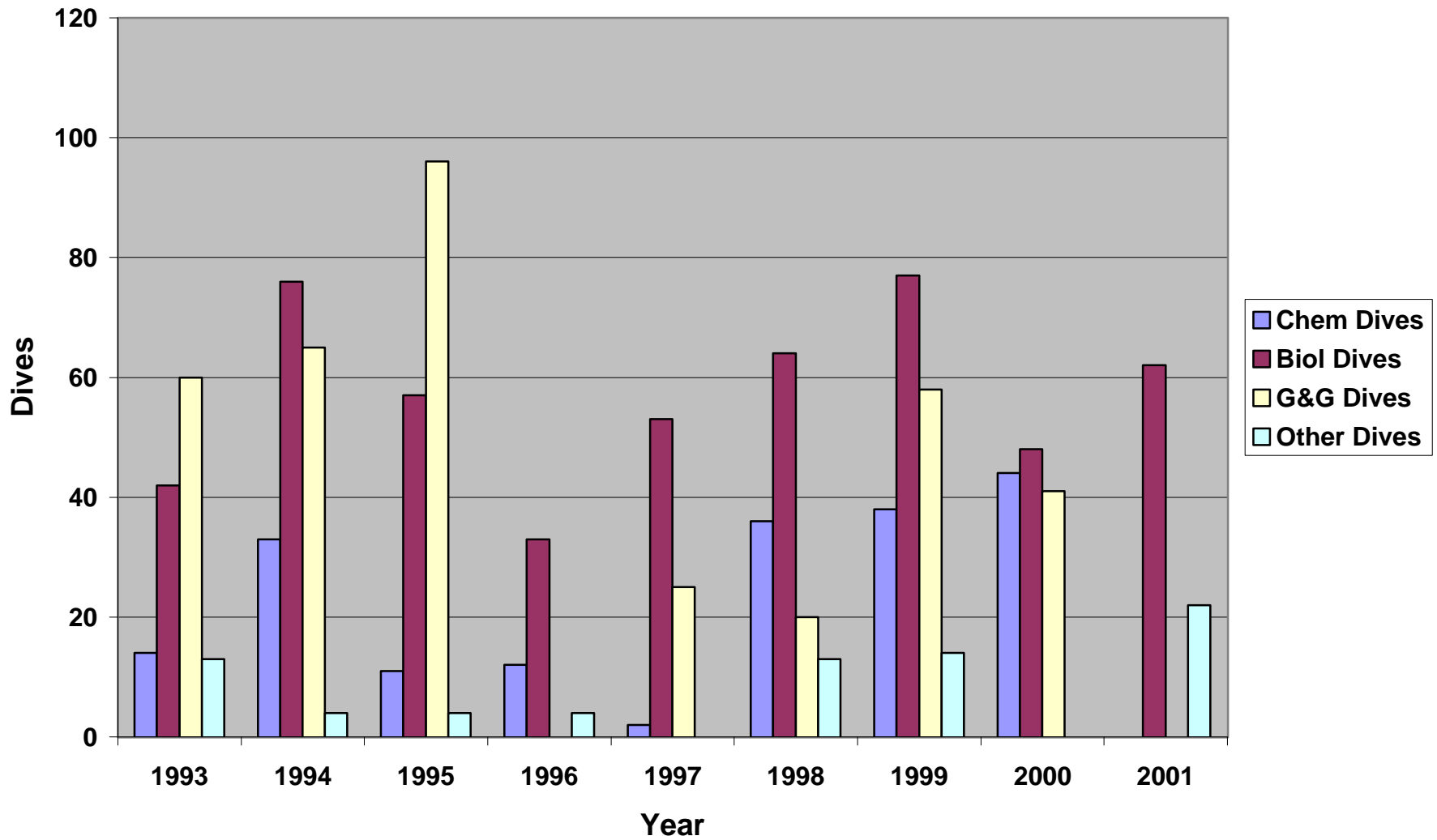
ALVIN Funding Support by Agency: 1993-2001



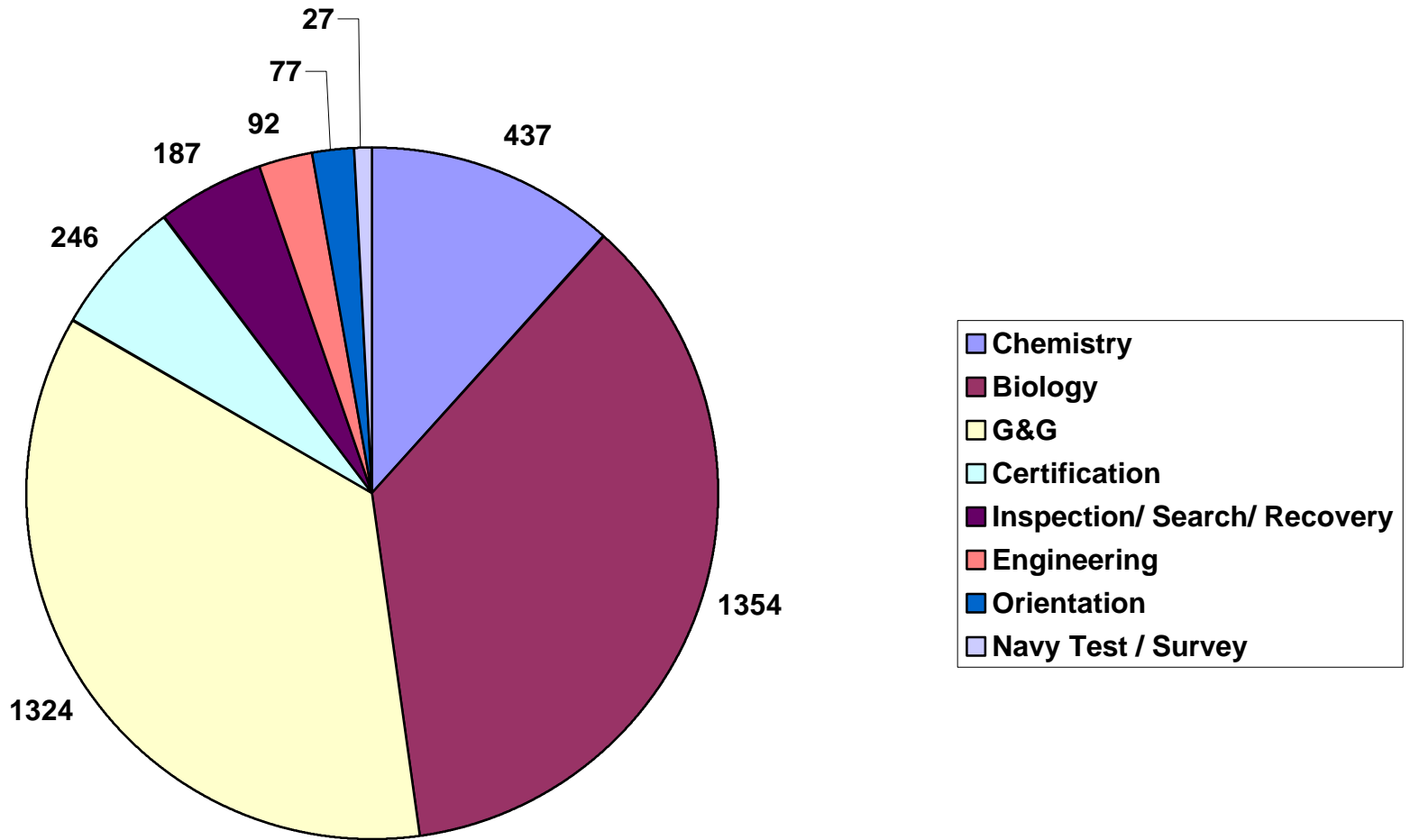
NDSF Operating Days and Cost: 1993 -2001



ALVIN Dive Summary by Discipline: 1993 - 2001



ALVIN Dives by Discipline: 1964-2001



#	PI	Inst/Org.	1993	1994	1995	1996	1997	1998	1999	2000	2001
1	Arp	SFSU			2						
2	Ballard	WHOI						1			
3	Baross				1						
4	Bartlett	SIO							1	1	
5	Batiza	U.Hawaii		1	1						
6	Bauer	SIO		1							
7	Beatty	NSERC						1			
8	Becker	U. Miami	2	1	1		1	1	1	1	1
9	Bernhard	USCarolina									1
10	Billings	McLane Research Lab								1	
11	Blackman	SIO								1	
12	Bothner	USGS				1					
13	Bradley	WHOI		1	1				1	1	1
14	Bright	Uvienna						1	1		1
15	Brown	SIO							2		
16	Calder	Royal Ontario Museum	1								
17	Canfield	Odense U						1			
18	Carson	Lehigh	3					1	1	1	
19	Cary	U.Delaware		1	1	1	2	2	1	1	1
20	Cavannaugh	Harvard				1			2		
21	Chadwick	OSU		1							
22	Chamberlain	Syracuse	1								
23	Chambers						1				
24	Chave	WHOI				1	1	1		1	
25	Childress	UCSB		1				1			1
26	Christian	Ubretagne									1
27	Cochran	LDEO		1							
28	Cormier	LDEO							1		
29	Cowen	Uhawaii						2			
30	Crawford	USCD							2		
31	de Angelis	Humbolt							1		
32	Delaney	U. Washington	1		3		1			3	
33	DeMaster	NCSU				1					
34	Deming	UW							1		
35	DiMeo	OSU									1
36	Ding	UMinn							5		
37	Druffel	UC Irvine		1	1						
38	Duncan	OSU							1		
39	Eckman	ONR						1			
40	Edmond	MIT			1						
41	Edwards, K	WHOI								1	
42	Edwards, M	U. Hawaii	1	1							
43	Embley	PMEL		1	1						
44	Emerson	Amer type culture						1			
45	Epifanio	Udelaware							1		
46	Escobar	UNAM							1		
47	Evans	WHOI					1	1			
48	Fealy	PMEL		1							
49	Felbeck	SIO							1		1
50	Fiala	INSU-France		1							
51	Fisher	Penn State			2		1	1	4		1
52	Fornari	WHOI		2	1		1	1		2	
53	Francoise	CNRS					1				

