

Dave Forcucci 206-217-6648 phone

206-217-6878 Fax

DForcucci@pacnorwest.uscg.mil

Building #3, K Bay

47° 35' 23" N
-122° 20' 25" W



HEALY Personnel

		<u>Transfere date</u>
CO	CAPT David Visneski	Summer 2003
XO	CDR Doug Russell	Summer 2003
OPS	LCDR Joe Segalla	Summer 2003
EO	LCDR Gregory Stanclik	Summer 2004
MSO	LTJG Mike Woodrum	Summer 2003
MSO	LTJG Neal Amaral	Summer 2005
Lead MST	MSTCS Glen Hendrickson	Summer 2003
Lead MST	MSTCS Mike Hamerski	Summer 2005
MST1-	MST1 Sean Kuhn	Summer 2003
MST2	MST2 Bridgette Cullers	Summer 2003
MST2	MST2 Josh Robinson	Summer 2005
MST3	MST3 Susan Scriven	Summer 2004

CDR Russell has requested to extend one year on HEALY if not picked up for Senior Service School (panel meets week of 9 Sept).

CDR (select) Segalla has indicated that he'd be interested in extending for a third year and fleeting up to the XO job if not selected for O-5 afloat command (Afloat Command Assignment Panel meets week of 16 Sep). If successful in the CASP, then LCDR Segalla will still compete with others who are successfully screened for available O-5 command billets (not everyone who screens successfully gets a command that year).

Most enlisted billets will be filled in Dec and Jan.

The Captain assignment panel meets the first week in January.

The Commander assignment panel meets the first week in February.

Operational LCDR orders (OPS in this case) are usually settled in mid-to-late Feb.

HEALY 2003 Schedule

6 week NSF SBI Service Cruise

4 week NSF SBI Mooring Maintenance cruise

Scheduling Status-

HEALY is drafting a strawman



75 kHz ADCP Installation

March 2002 during emergency dry dock

50% NSF Funding (UW purchase of ADCP)

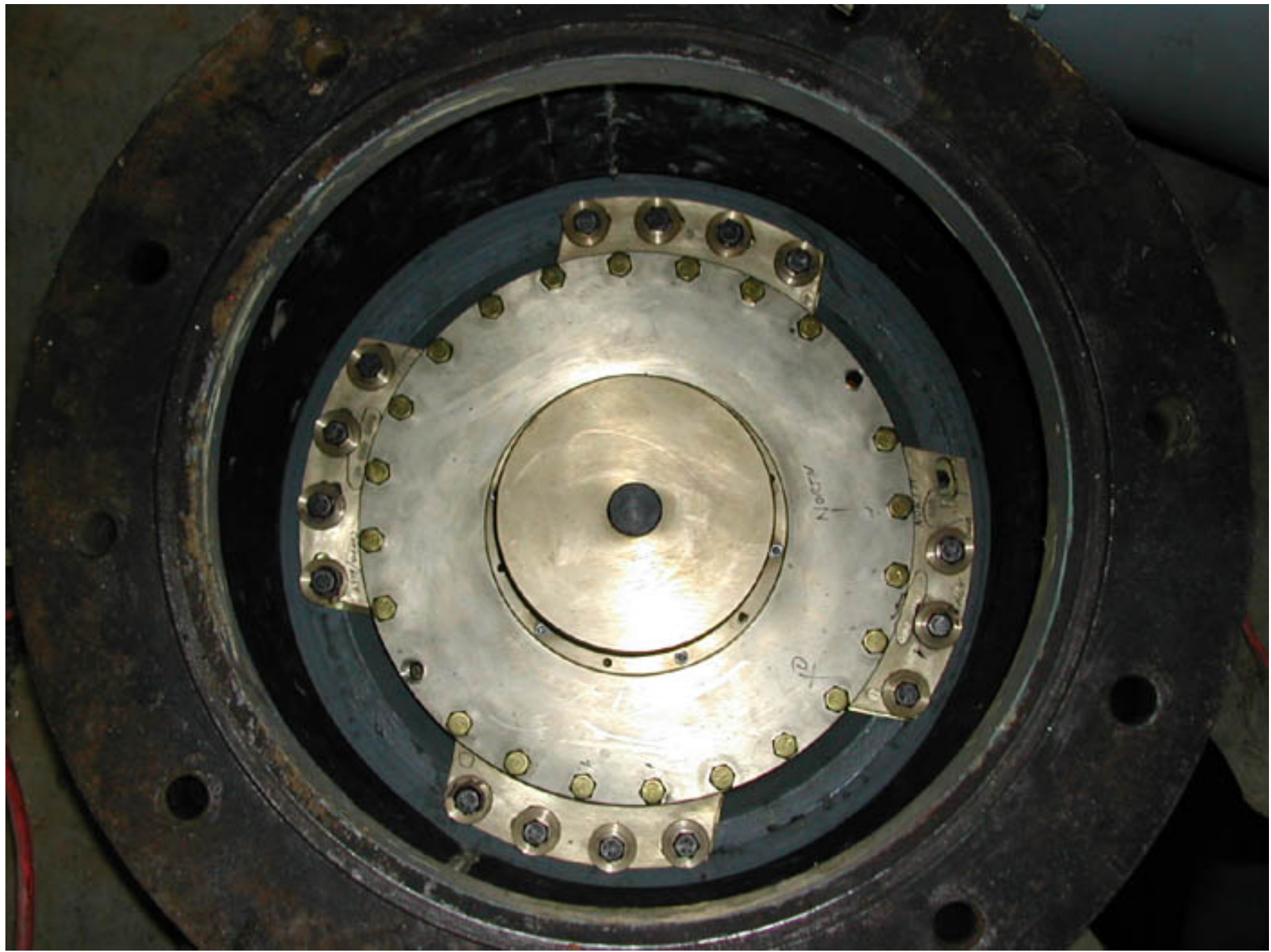
50% USCG Funding (Dry dock installation)

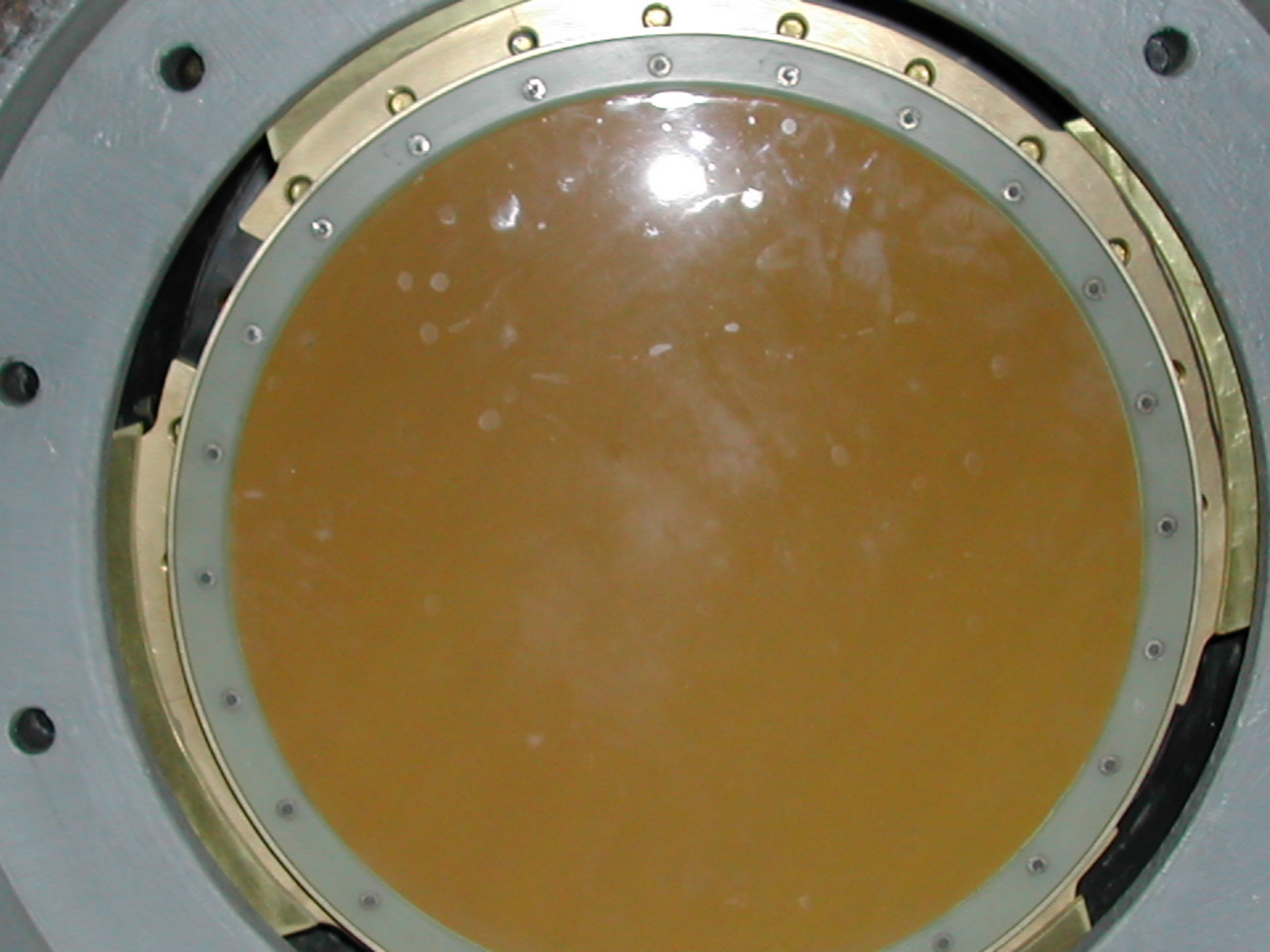
60%- Electronics and cables- ATG

40%- Transducer well by shipyard

SBI successful data collection for both cruises













- HEALY Science Seawater Sea Chest

- 1) Target 95% availability rate while operating in sea ice conditions.
- 2) Maximize existing down stream plumbing systems lab feeds
- (Existing pump and sea chest remain as is for redundancy and open water purposes)

- 15 Nov 02 (completion)
 - 1) Conduct a survey of other high latitude research vessels and assess applicability to HEALY
 - 2) Prepare an Analysis of Alternatives with ROM cost estimates for review by the Coast Guard.

- 15 Jan 03 (completion)
 - 1) Down select to preferred design
 - 2) Site visits to vessels and component manufacturers

- 15 May 03
 - Draft specification and cost estimate development

- 01 Aug 03
 - Final detailed specification and cost estimate

High Latitude Communications

- Long Range plan- 2003 and 2004 < 75° North
- AWS02 Inmarsat- NSF supported 2 hr/d @ \$0.85/min
- HEALY AWS02- Able to provide 24/7 when Lease channel is available
- Hidden charge- Auckland ISDN= additional \$0.50
- PACAREA Lease line contract= \$1/min for science
- Long Range- Multiplex iridium
-

HEALY Equipment Purchases 2002

- Calibrations \$5,500
- Repairs \$2,500
- New Equipment \$35,000
- ADCP Install ~\$200,000

HEALY Equipment

- Metered Sheave
- Updated ADCP 150 computer with mult serial ports
- Debubbler- SBI Ice TSG
- Seabird NMEA Box- SBI Ice TSG
- Seabird TSG water Jacket - SBI Ice TSG
- Wet Labs C-Star Transmissometer-Ice TSG
- Sippican MK21 and Launcher for XCTDs
- Turner Design SCUFA Chl Fluorometer

HEALY 2003 Equipment Purchases

- Replace 2x- 4k lb JPC Core
- Identify equipment for Mooring deployment
- GPS Inertial Nave \$?

HEALY AWS02 Underway data

- Seabeam 120 days (?)
- ADCP 120 days (80 dedicated, 40 adhoc)
- Underway Temp and Salinity <40 days
- Met sensors 120 days (?)

ADCP Underway Data

- Dr. Charlie Flagg BNL
- Process Raw data File
- Quality Check
- Maintain Meta Data info
- Post on Web and send to NOAA
- <http://www.oasdpo.bnl.gov/mosaic/globec/>

HEALY Science Berthing

- 18 Science Staterooms
- Maximum of 51 Scientists on board
- Minimum of 2 Per state room
(except for Chief Scientist)

AWS02 HEALY Quality of Life

- 5 Months of science with NO Break! (4d Dutch)
- Need quality port calls for recruiting good sailors
- Some personnel changes need 3 days minimum
 - Opportunistic due to weather, science should prepare for overlapping