

Rolling Deck to Repository (R2R) Program

Mission:

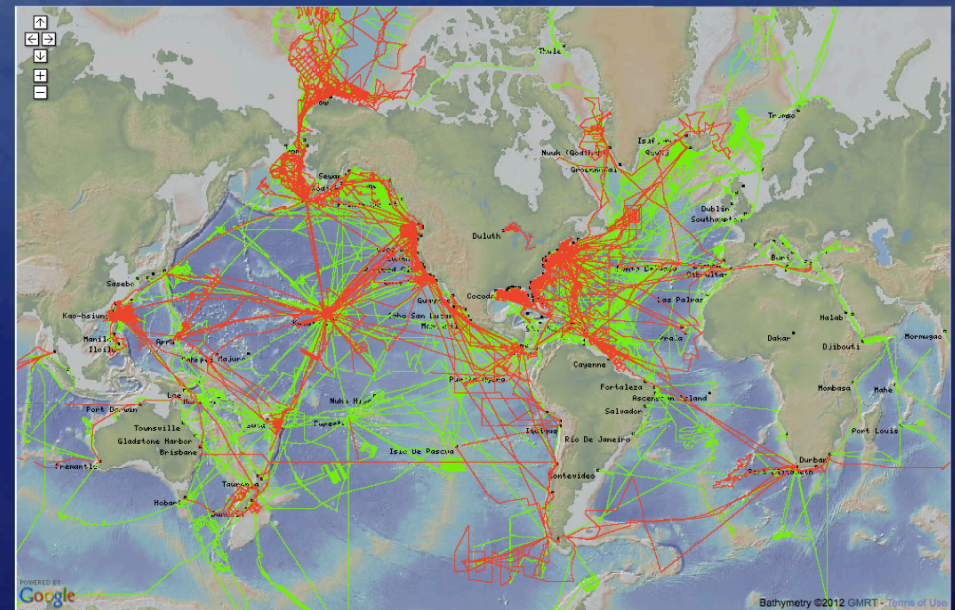
Stewardship of routinely-acquired
environmental sensor data
+documentation from U.S. academic
research fleet

Funding:

NSF Ocean+Polar Divisions

Services:

- Publish master cruise catalog
- Organize, archive, and disseminate data+documentation
- Assess data quality
- Create quality-controlled products (nav, r/t met, geo, ctd)
- Support at-sea eventlogger



As of October 2014:

3,686 Cruises

17.4M Files Archived



Lamont-Doherty Earth Observatory
COLUMBIA UNIVERSITY | EARTH INSTITUTE



Program Team
(LDEO, FSU, SIO, WHOI)



International
Partners



Disciplinary
Data Systems



IEDA



Geoinformatics
Community



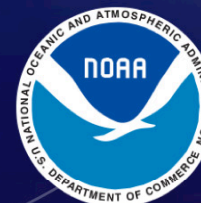
R2R Partners



Academic
Fleet Office

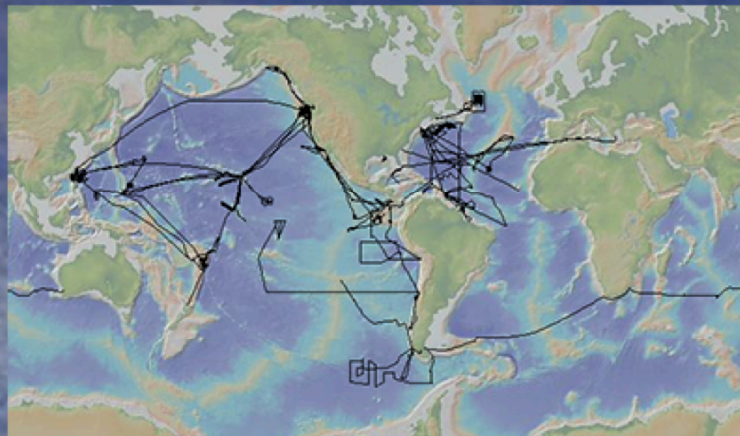


Fleet
Operators



National
Data Centers

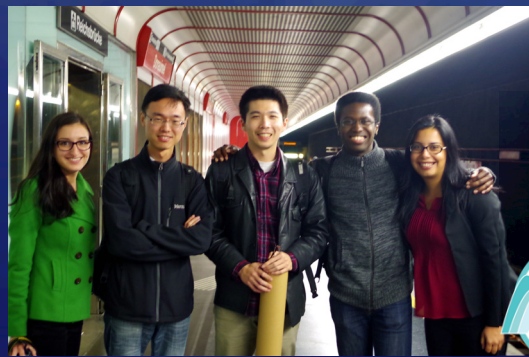
R2R Impacts



Data
Synthesis



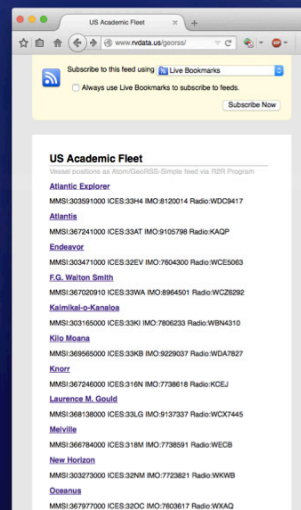
As of 2014, R2R has contributed
100+ multibeam cruises to the
GMRT global bathymetry compilation



Workforce
Development



R2R student fellows work with
EU+AU developers on
interoperable data systems



Enviro
Response

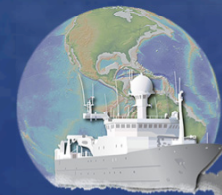


R2R provides GeoRSS feed
with ship positions +
cruise catalog links to ERMA



Looking Ahead

1. Continue operation of R2R core data stewardship +publication services.



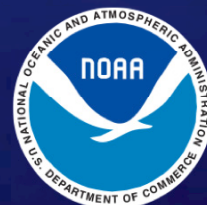
2. New development including:

- Operational quality assessment for CTD, ADCP, Fluoro data
- Recruit additional vessels to SAMOS
- Shipboard microserver to host EvLogger +science apps



3. Participate in NSF EarthCube Council of Data Facilities, Technical Governance, and “Building Block” projects.

4. Prototype development toward NOAA Cruise Catalog.



5. Convene community Advisory Panel meetings in 2015, 2017.

