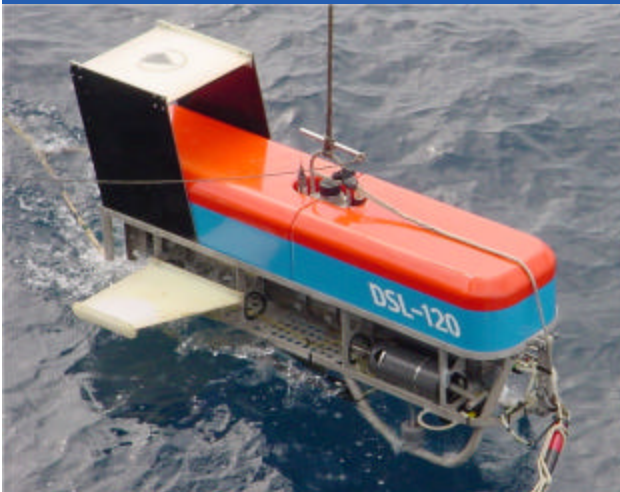


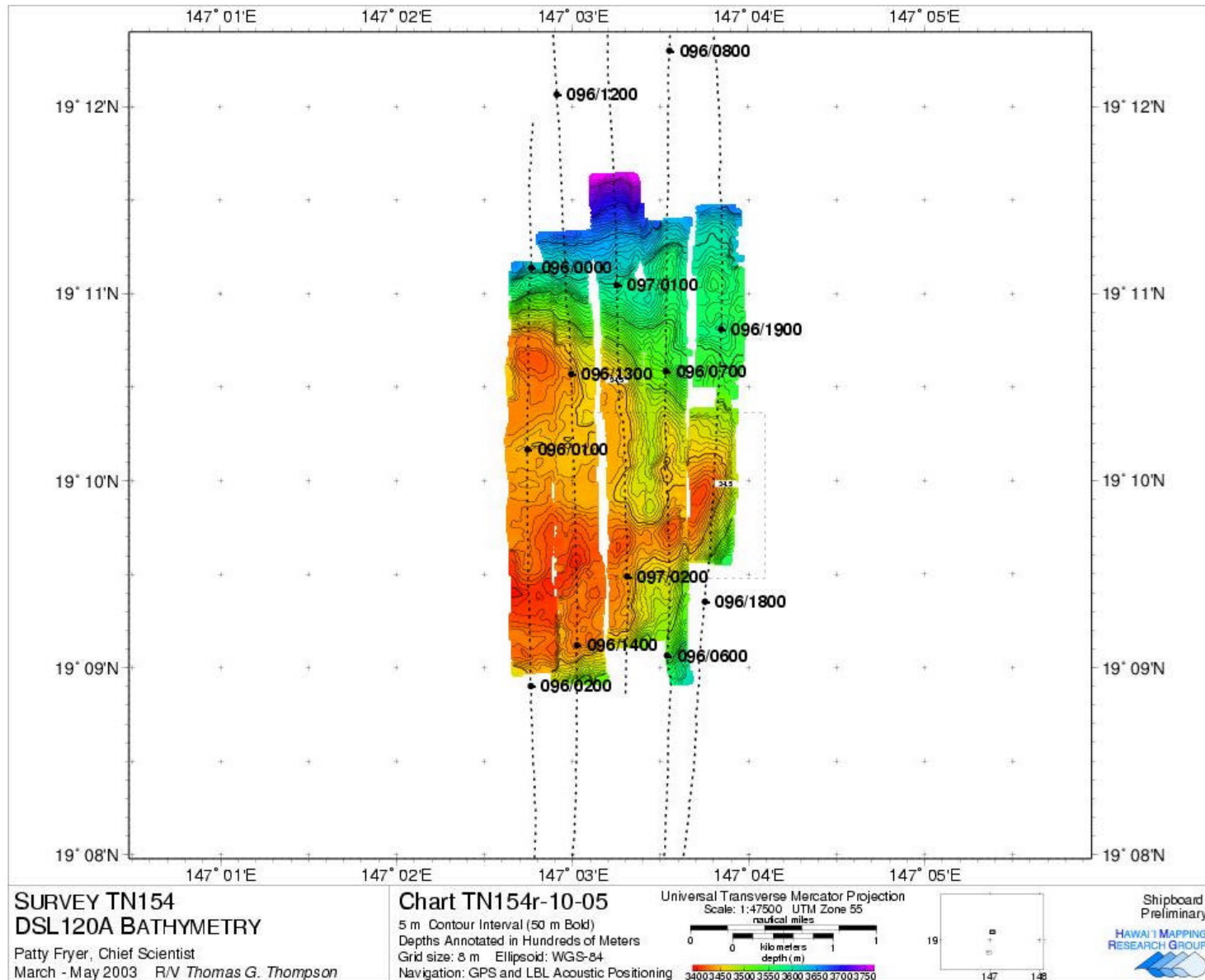
## DSL 120A General Information



- Normal staffing compliment of 6 people 2 DSOG, 4 HMRG
- Tow speed .5 to 1 knot depending on depth and terrain considerations.
- Bathy swath ~60 deg./side (~400m total at 100m alt.)
- Imagery swath ~ 80 deg. (~1,000m total at 100m alt.)
  - Resolution at 100m alt:
    - Imagery 1-2 m
    - Bathy 4-8 m
- Data storage and output:
  - Raw data on Exabyte tape and CDs (approx. 12 tapes and 24 CDs for a 24 hour period)
  - Vehicle navigation and attitude data provided in same format as Jason
  - GMT grids on CD



# DSL 120A Bathymetry



# Turning the DSL120A

