

# FOFC Fleet Definition

<u>Global Ships</u>	<u>LOA</u>	<u>Retired</u>	<u>Entered Fleet</u>
MELVILLE	245/279		
KNORR	245/279		
T.G. THOMPSON	274		1991
ATLANTIS	274		1997
R. REVELLE	274		1996
ATLANTIS II	210	1996	
T. WASHINGTON	209	1992	
EWING	209		

## OCEAN SHIPS

MOANA WAVE	172/210	1999	
KILO MOANA	186		2002
SEWARD JOHNSON	170/204		
WECOMA	177/185		
ENDEAVOR	177/184		
GYRE	174/182		
OCEANUS	177		
NEW HORIZON	170		
ISELIN	170	1994	
SEWARD JOHNSON II	168		(ex EDWIN LINK)

## REGIONAL SHIPS

POINT SUR	135
CAPE HATTERAS	135
ALPHA HELIX	133

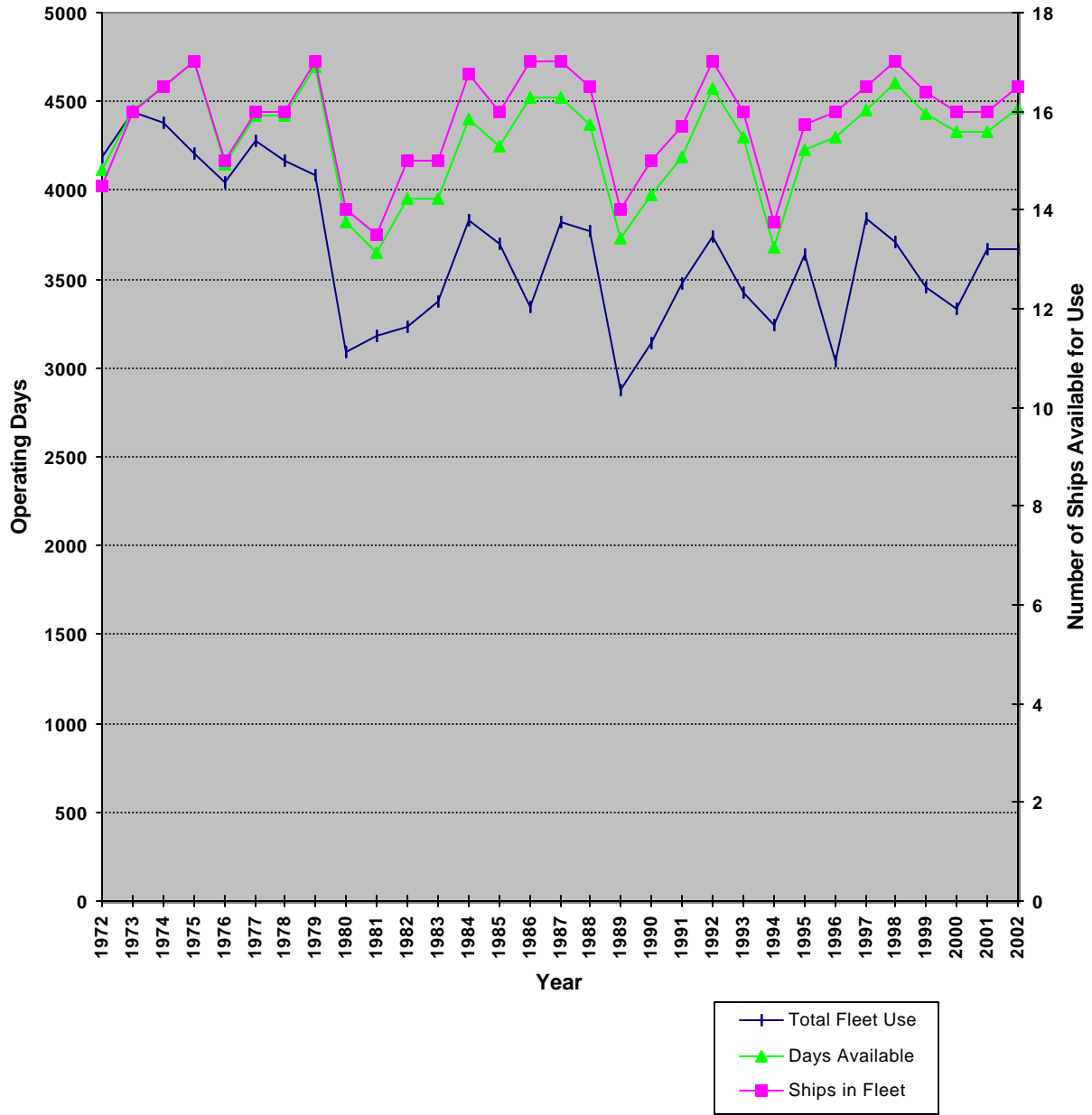
## LOCAL SHIPS

R. SPROUL	125		
CAPE HENLOPEN	120		
WEATHERBIRD II	115		
EDWIN LINK	113	2001	1994 (ex SEA DIVER)
LONGHORN	80/105		
PELICAN	105		
URRACA	96		1998
SAVANNAH	91		2001
BLUE HERON	86		2000
LAURENTIAN	80	2001	
BLUE FIN	72	2001	
BARNES	66		
CALANUS	64	1999	
WALTON SMITH	96		2000

## FOFC Recommended Definition of a Full Operating Year (FOY):

<u>Class</u>	<u>Length</u>	<u>FOY (days)</u>
GLOBAL		300
OCEAN		275
REGIONAL		200
LOCAL	100-130 ft.	180
LOCAL	<100 ft.	110

### UNOLS Vessels >150 ft: Days Available, Days Used, and Number of Ships

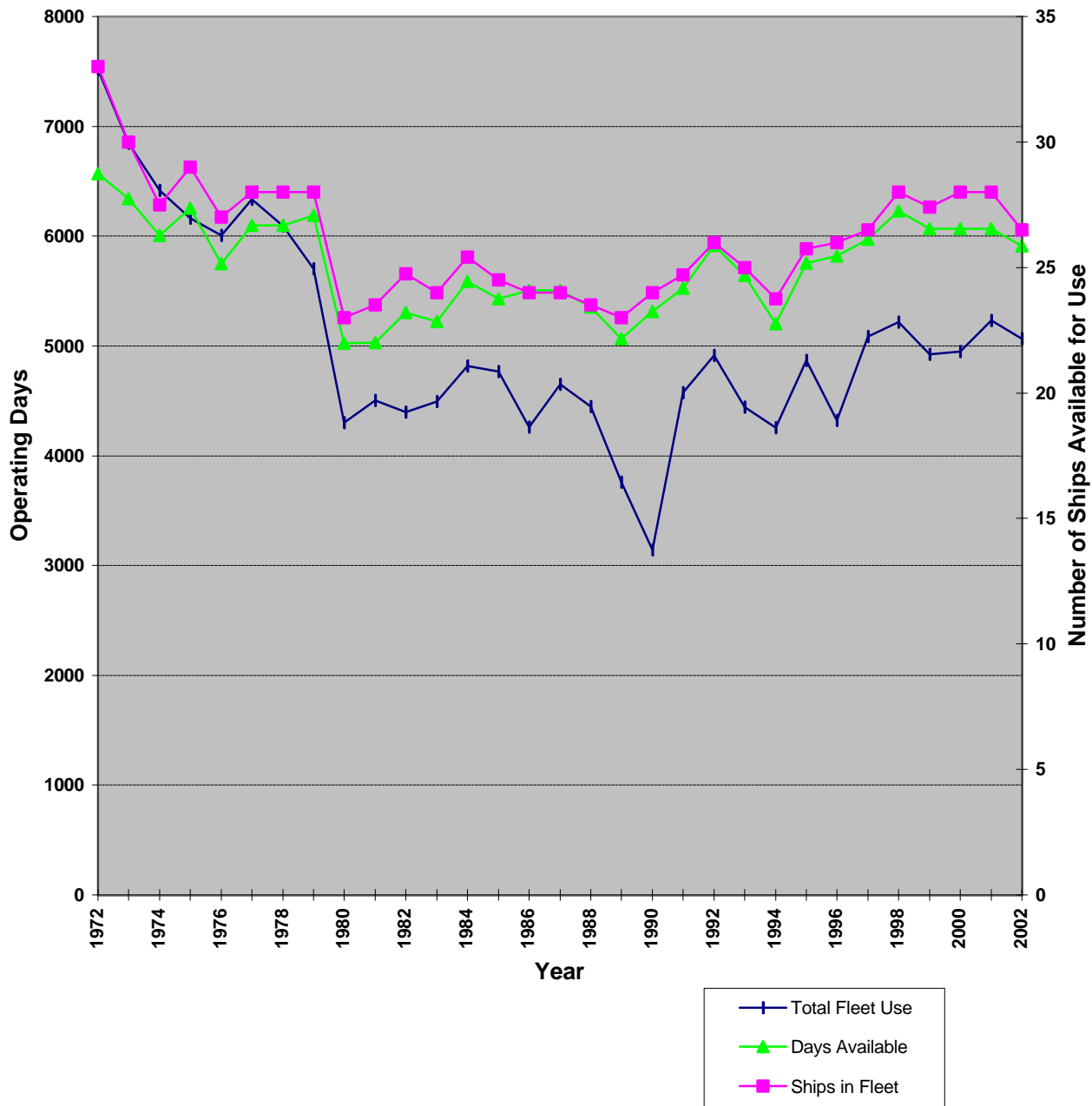


This chart shows the utilization of UNOLS Vessels >150 ft by year as well as the number of ships available for use. Also shown are the total days for a Full Operating Year (FOY) as defined by the FOFC Long-Range Fleet Plan.

**FOFC Recommended Definition of a Full Operating Year (FOY):**

Class	(FOY)
Global	300
Ocean	275
Regional	200

## UNOLS Fleet: Days Available, Days Used, and Number of Ships

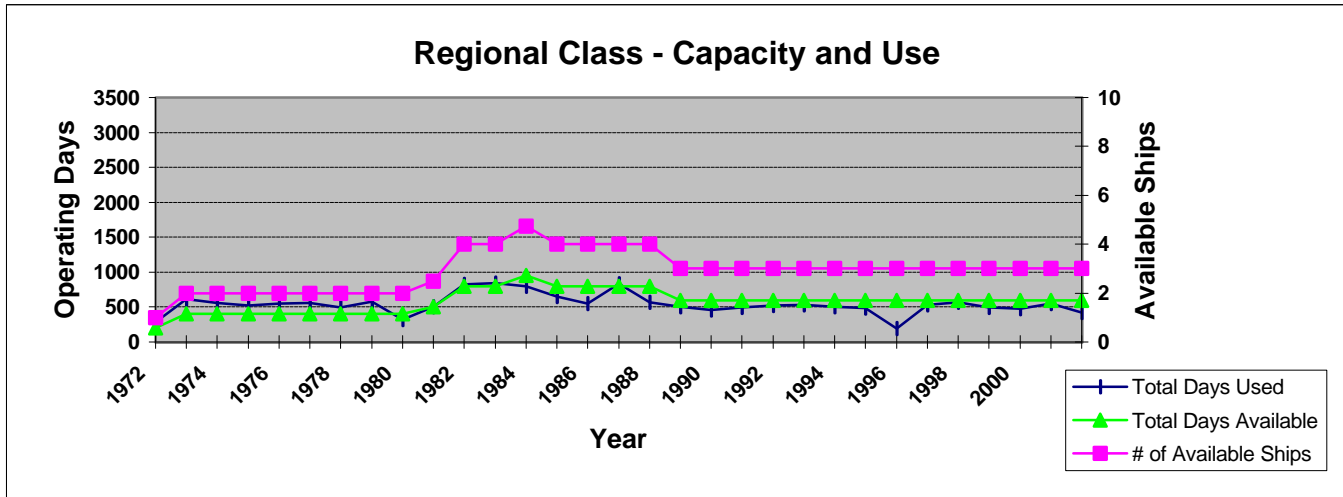
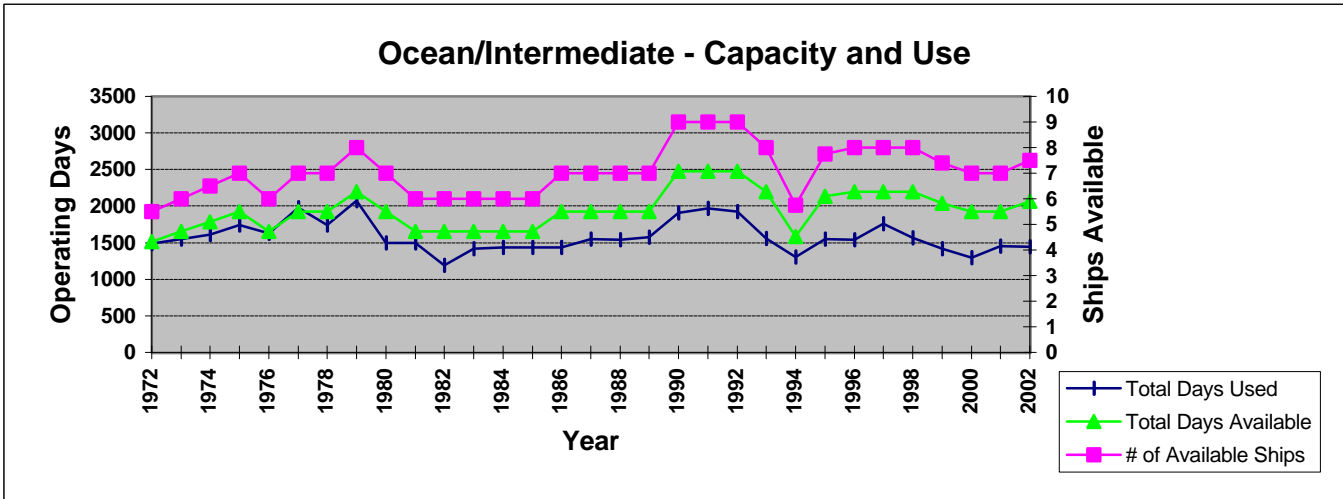
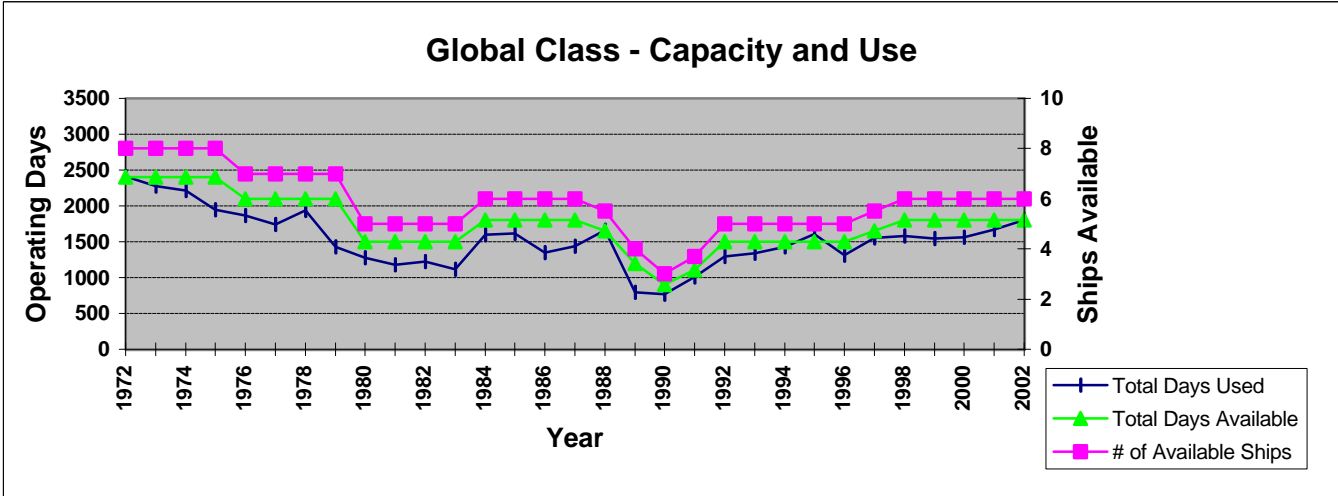


This chart shows the total Fleet utilization by year as well as the number of ships available for use. Also shown are the total days for a Full Operating Year (FOY) as defined by the FOFC Long-Range Fleet Plan.

### FOFC Recommended Definition of a Full Operating Year (FOY):

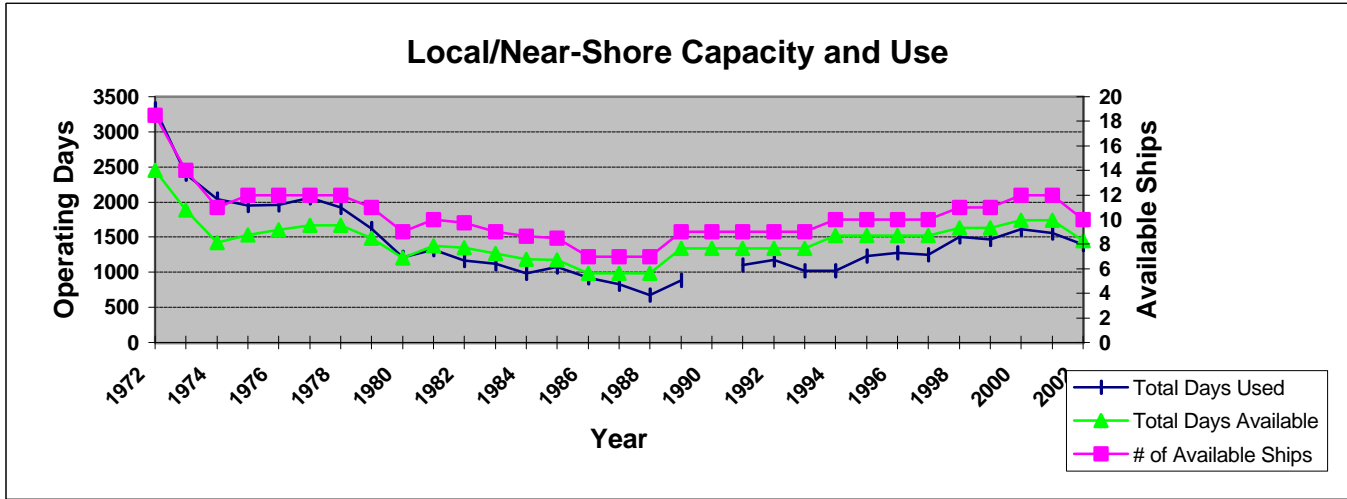
Class	Length	(FOY)
Global		300
Ocean		275
Regional		200
Local	100-150 ft.	150
	<100 ft	110

# Fleet Utilization by Class



**FOFC Recommended Definition of a Full Operating Year (FOY):**

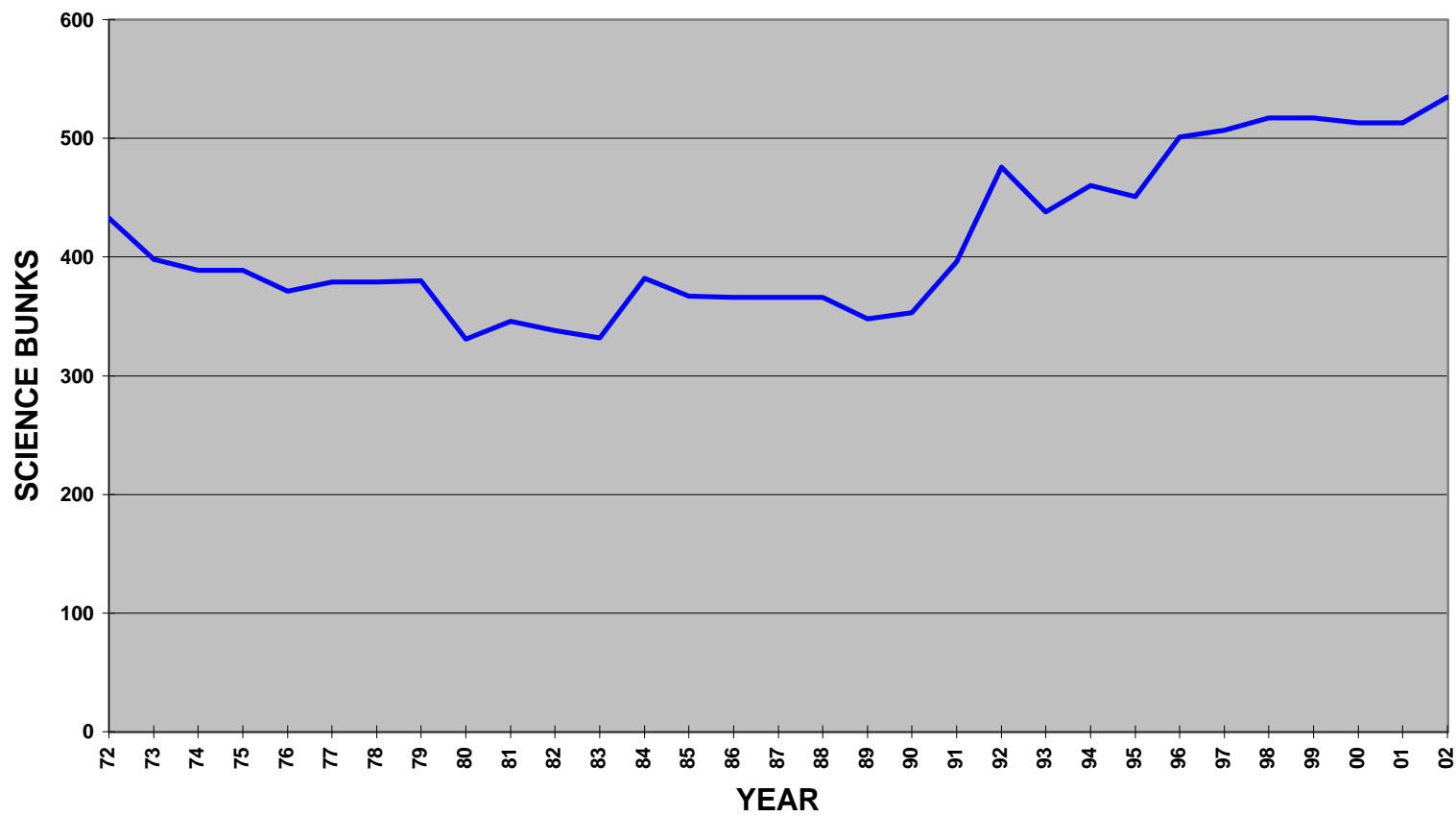
Class	Length	(FOY)
Global		300
Ocean		275
Regional		200
Local	100-150 ft.	150
A. DeSilva	<100 ft	110



**FOFC Recommended Definition of a Full Operating Year (FOY):**

Class	Length	(FOY)
Global		300
Ocean		275
Regional		200
Local	100-150 ft.	150
	<100 ft	110

## UNOLS SCIENCE BERTHS AVAILABLE (1972-2002)



**Fleet (>150') Utilization: 1991-2002**

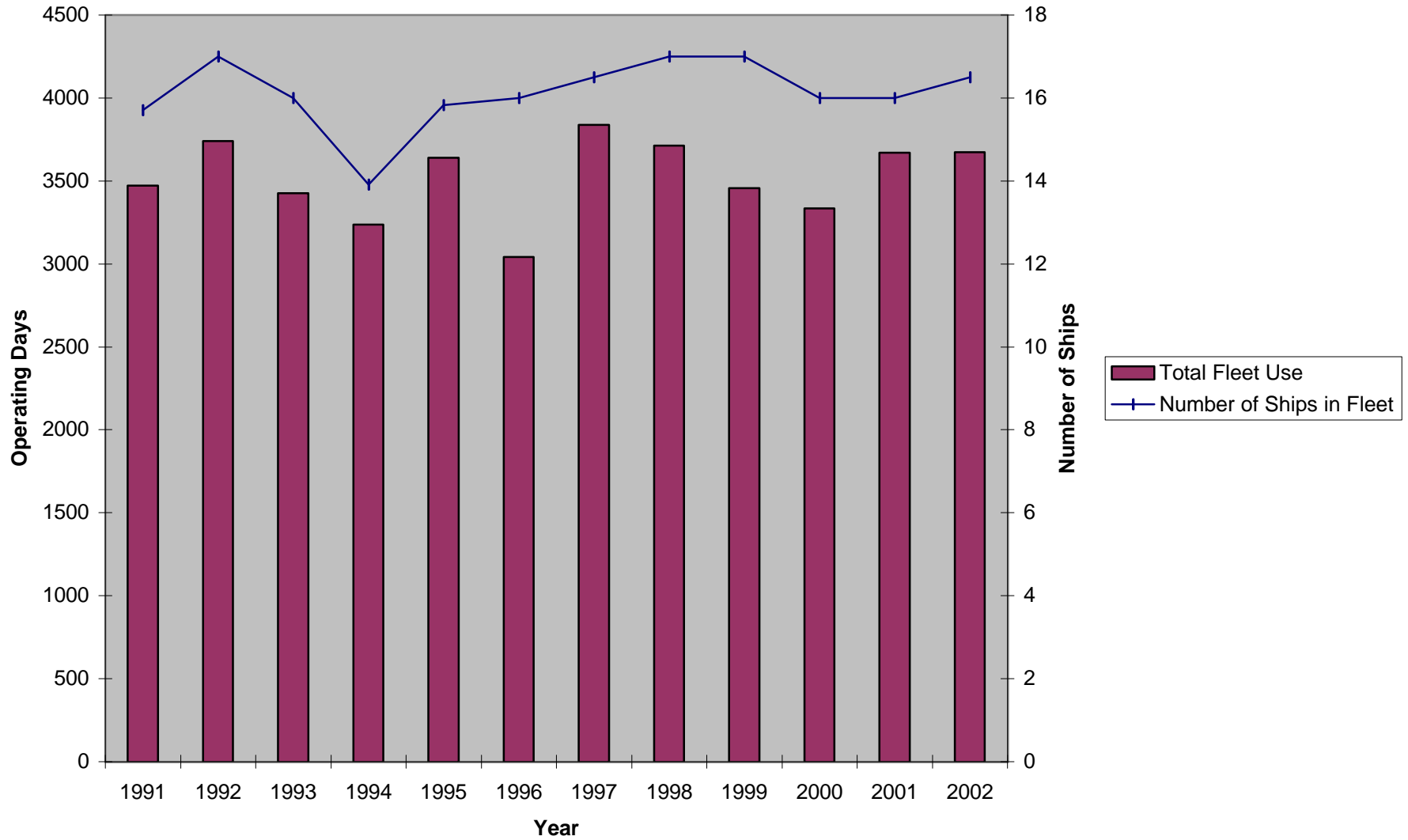
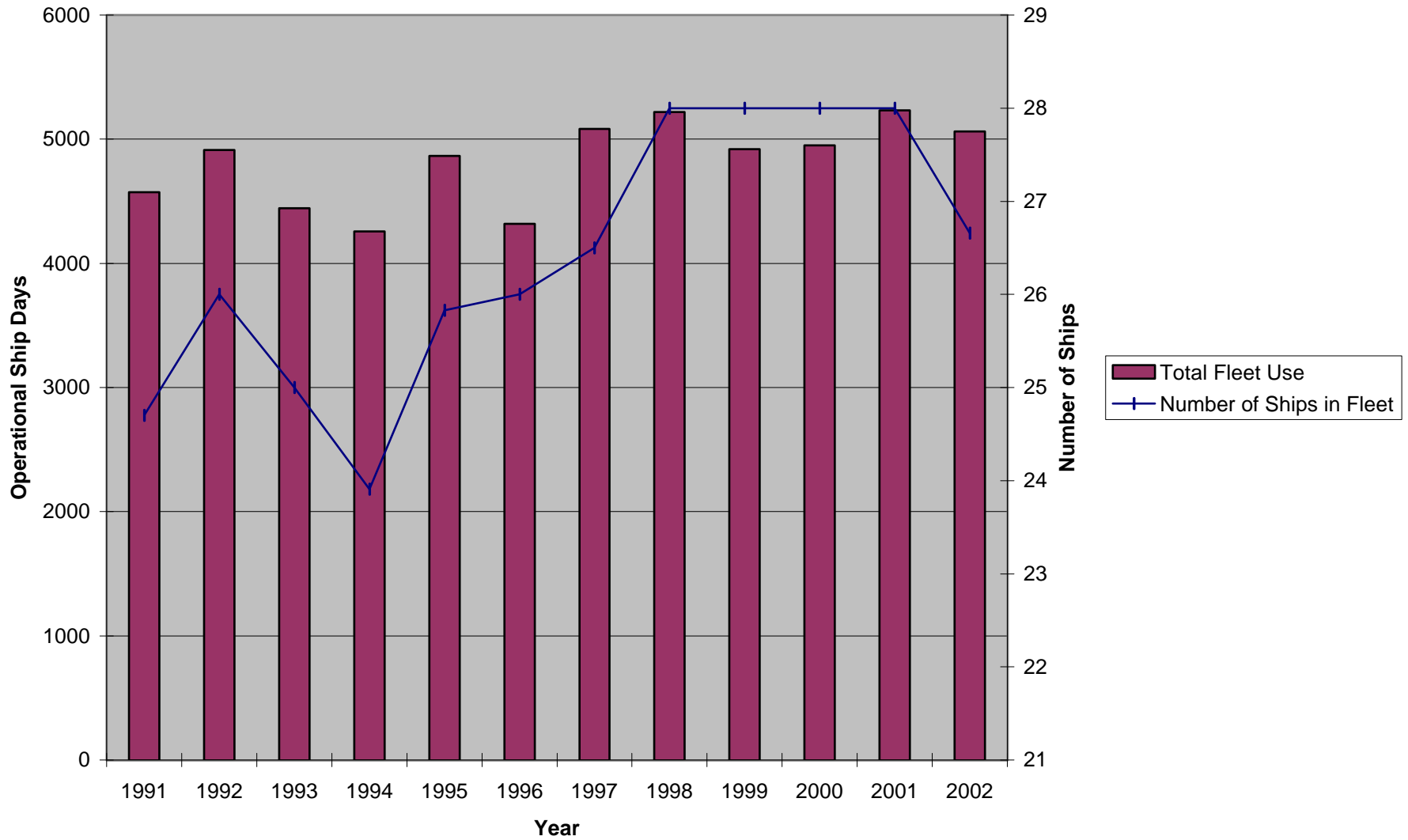
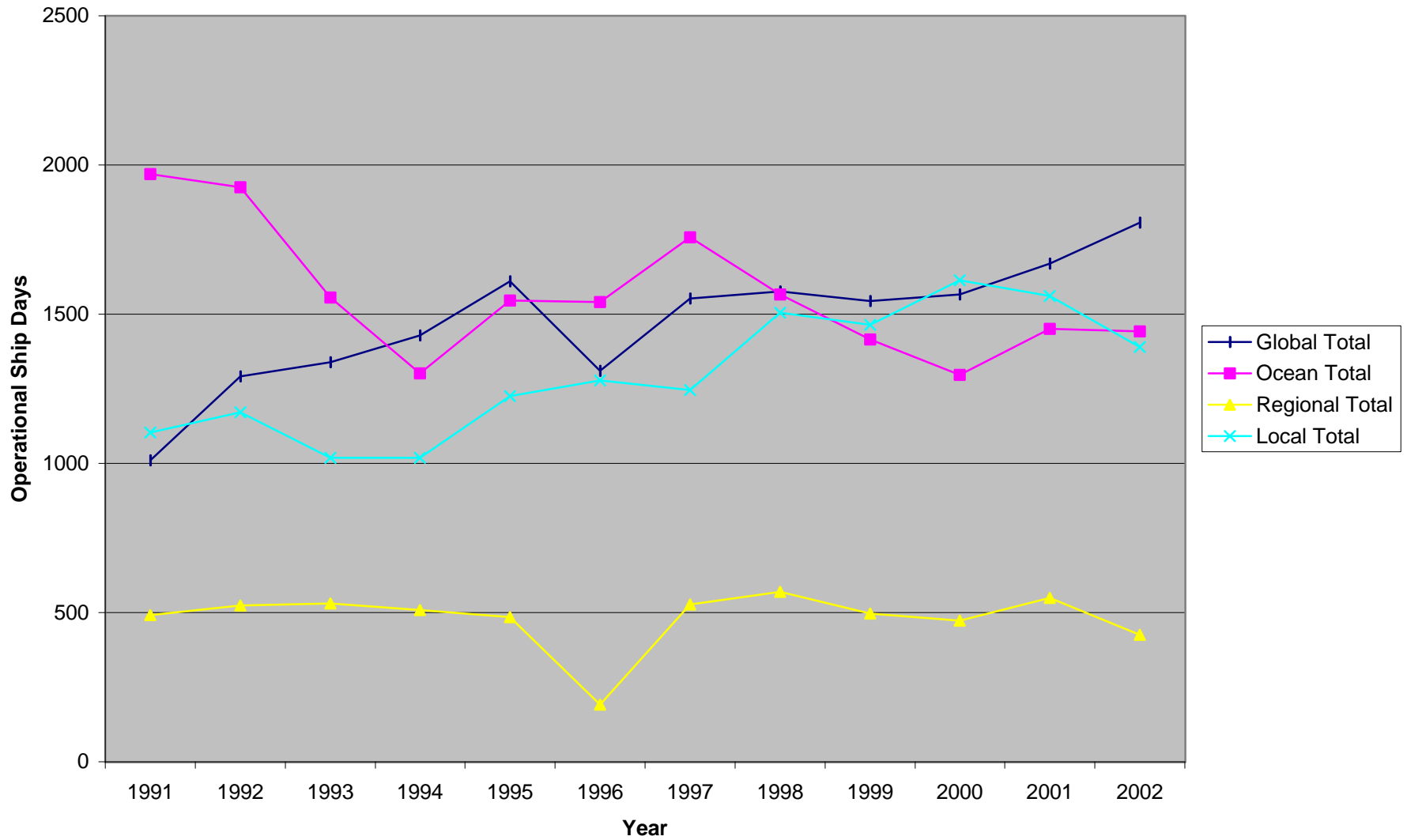


Chart 1- Fleet Utilization

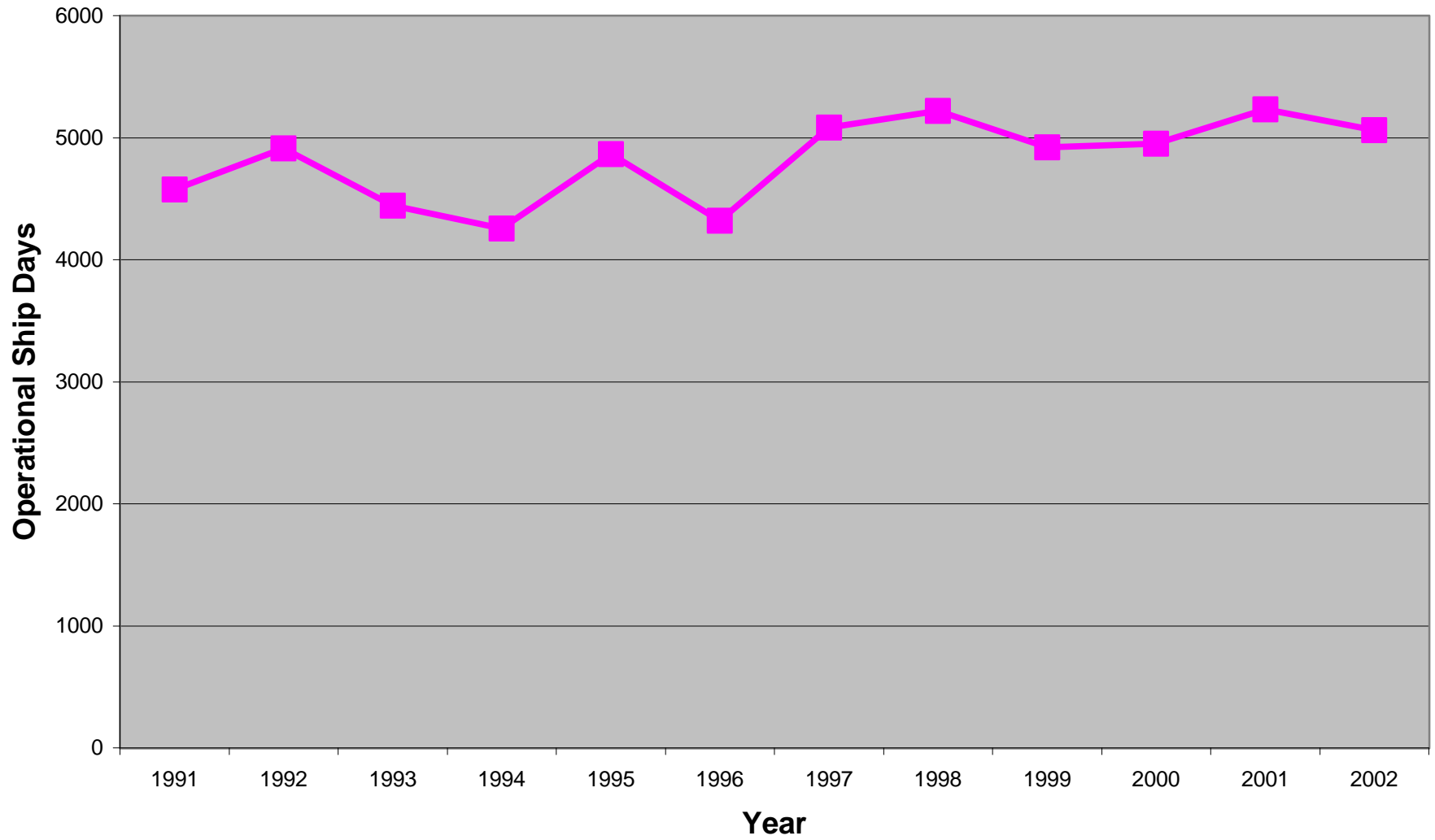
**Fleet Utilization: 1991-2002**



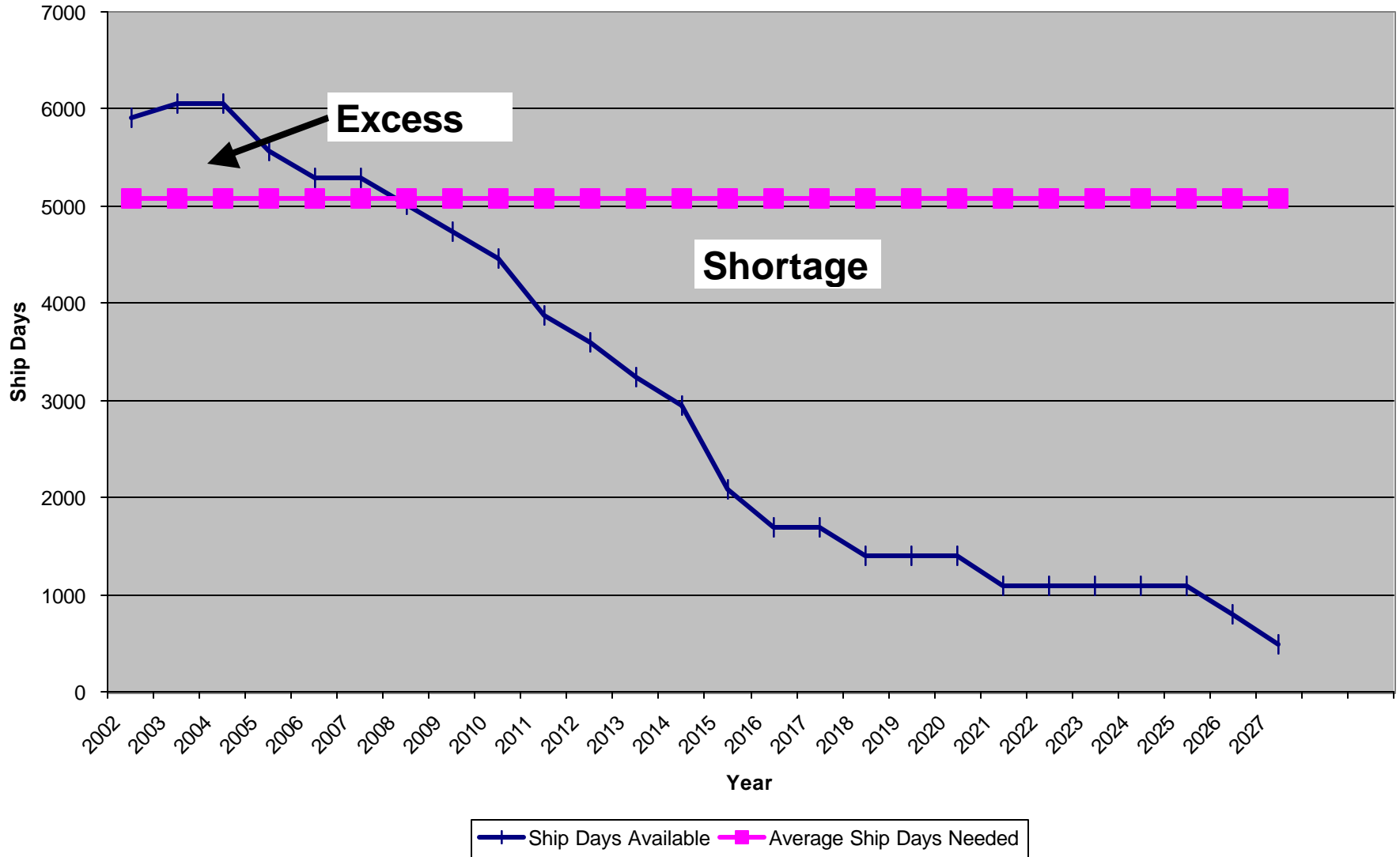
Utilization by Vessel Class: 1991-2002



## UNOLS Fleet Utilization (1991-2002)

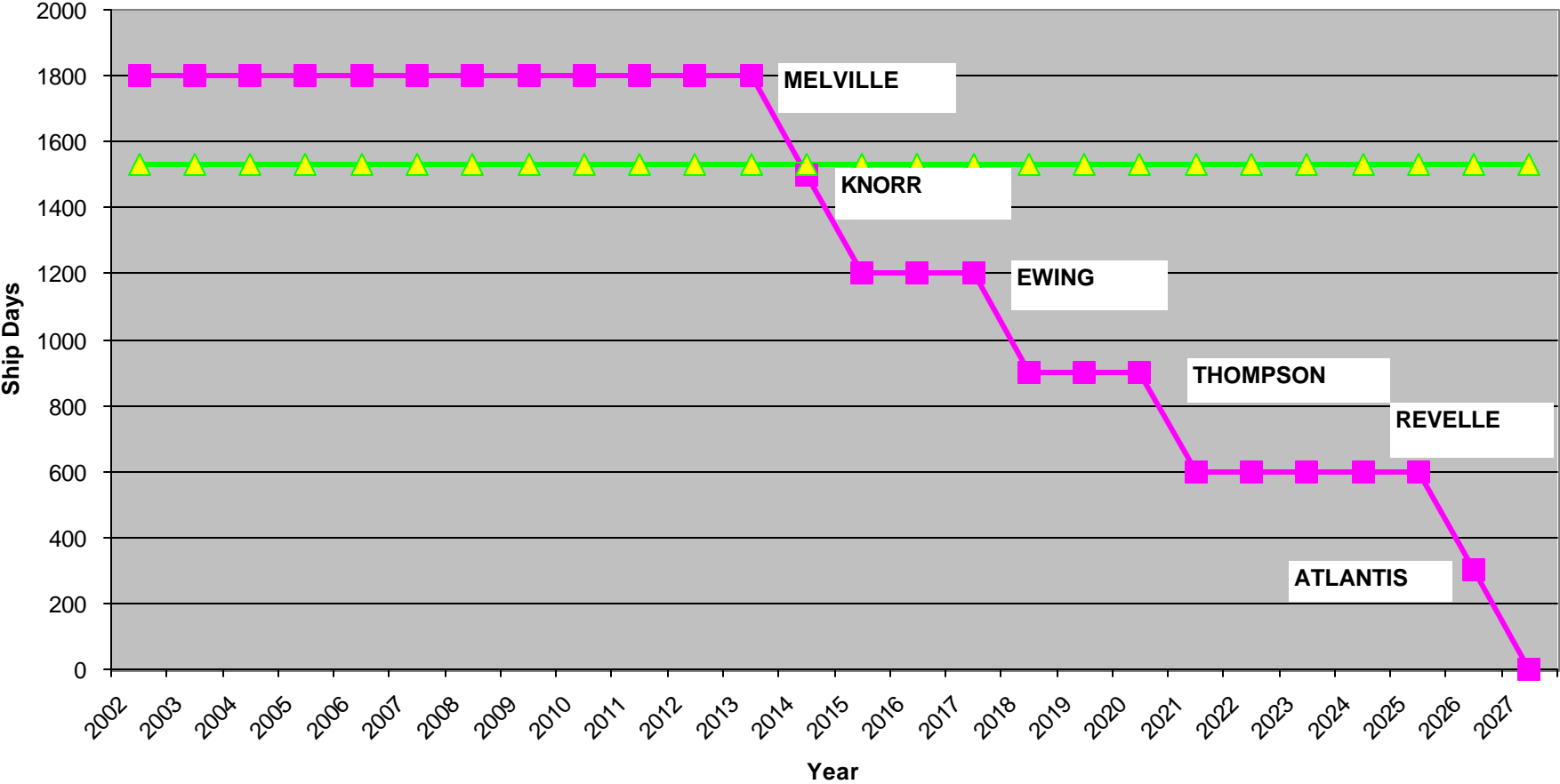


Total Ship Days Available vs Average Ship Days Needed

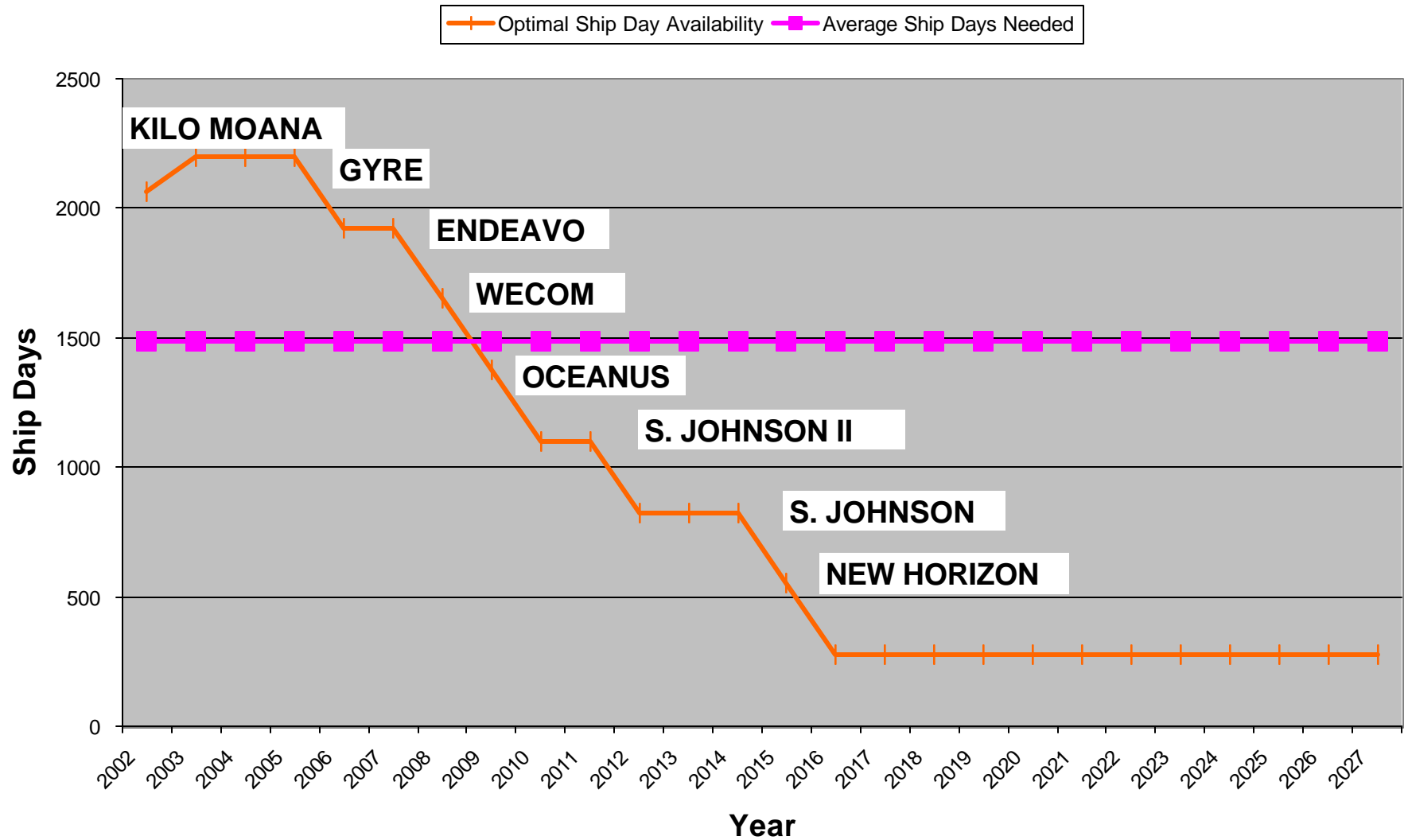


# Global - Optimal Ship Days vs Average Days Needed

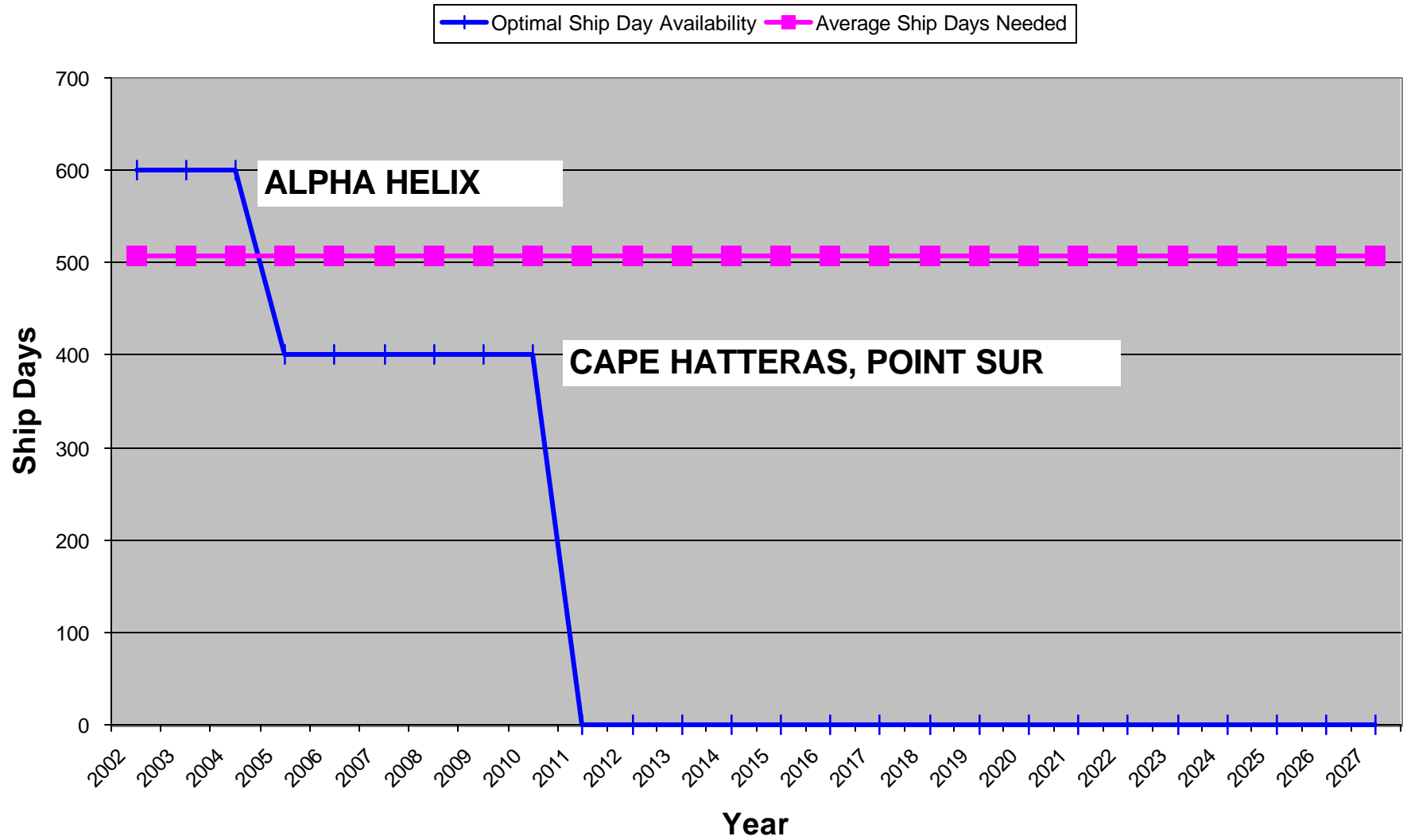
Optimal Ship Day Availability    Average Ship Days Needed



# Ocean Class - Optimal Ship Days vs Average Days Needed



# Regional Class - Optimal Ship Days vs Average Days Needed



# Local Class - Optimal Ship Days vs Average Days Needed

