

UNOLS Fleet Statistics and Projections

Fleet Utilization Trends as of March 2004

Fleet utilization trends are provided as charts in the Adobe document <[stats_march04](#)>. Future projections of available ship days are also provided.

Historical Statistics: A variety of Fleet statistics and projections are provided as charts in the below Adobe document. The document includes statistics on utilization as well as bunk availability. Future projections of available ship days are also provided.

Special Notes:

- 2002 utilization statistics based on ship schedules posted as of 2/02
- Full Operating Year definitions have been revised to be consistent with the definitions provided in the FOFC plan.
- Total Fleet utilization charts are provided as well as charts for only those vessels > 150 feet.

The charts are contained in: <[stats_2002.pdf](#)> (last updated 2/21/02)

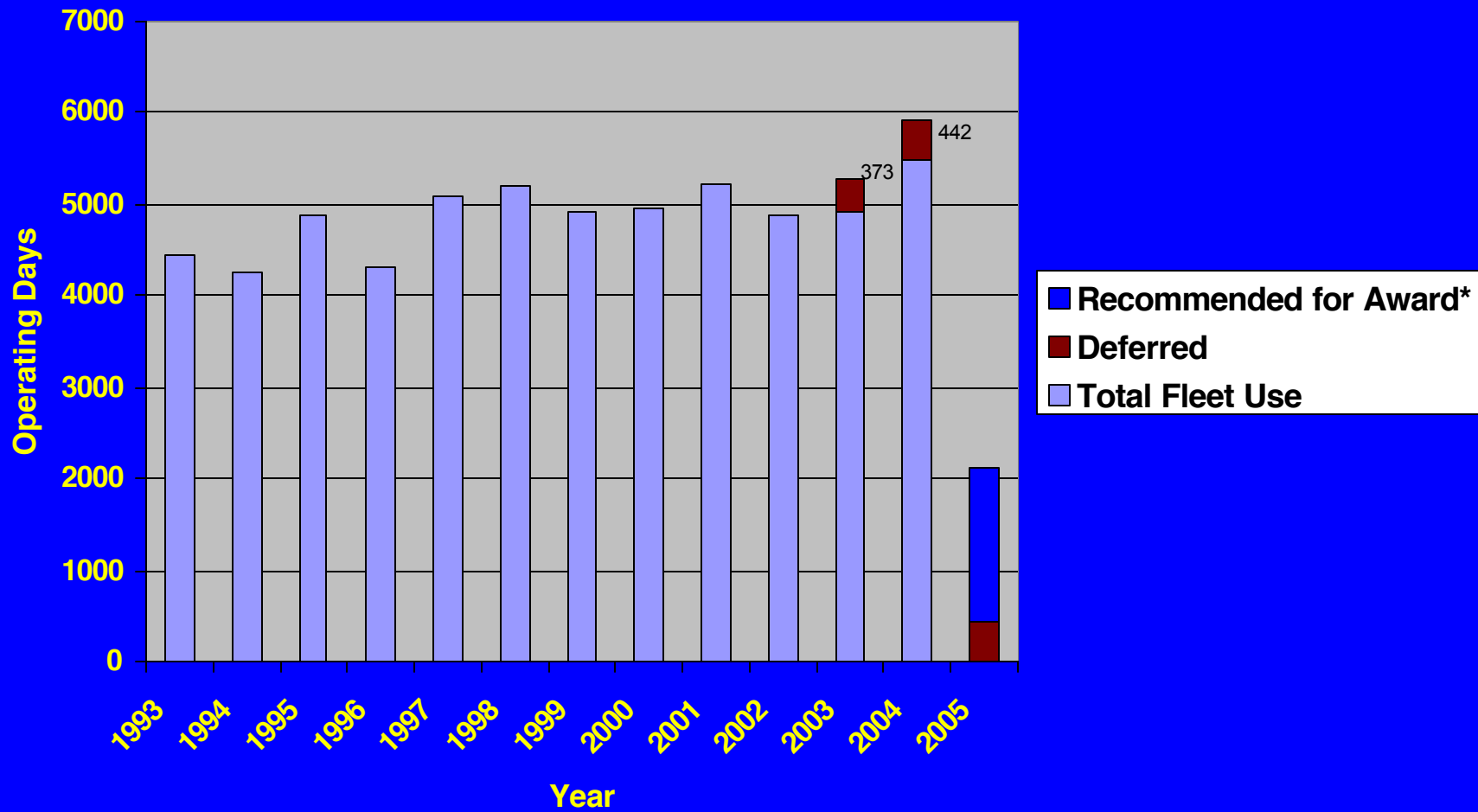
[Return to FIC web page](#)

UNOLS Fleet Utilization

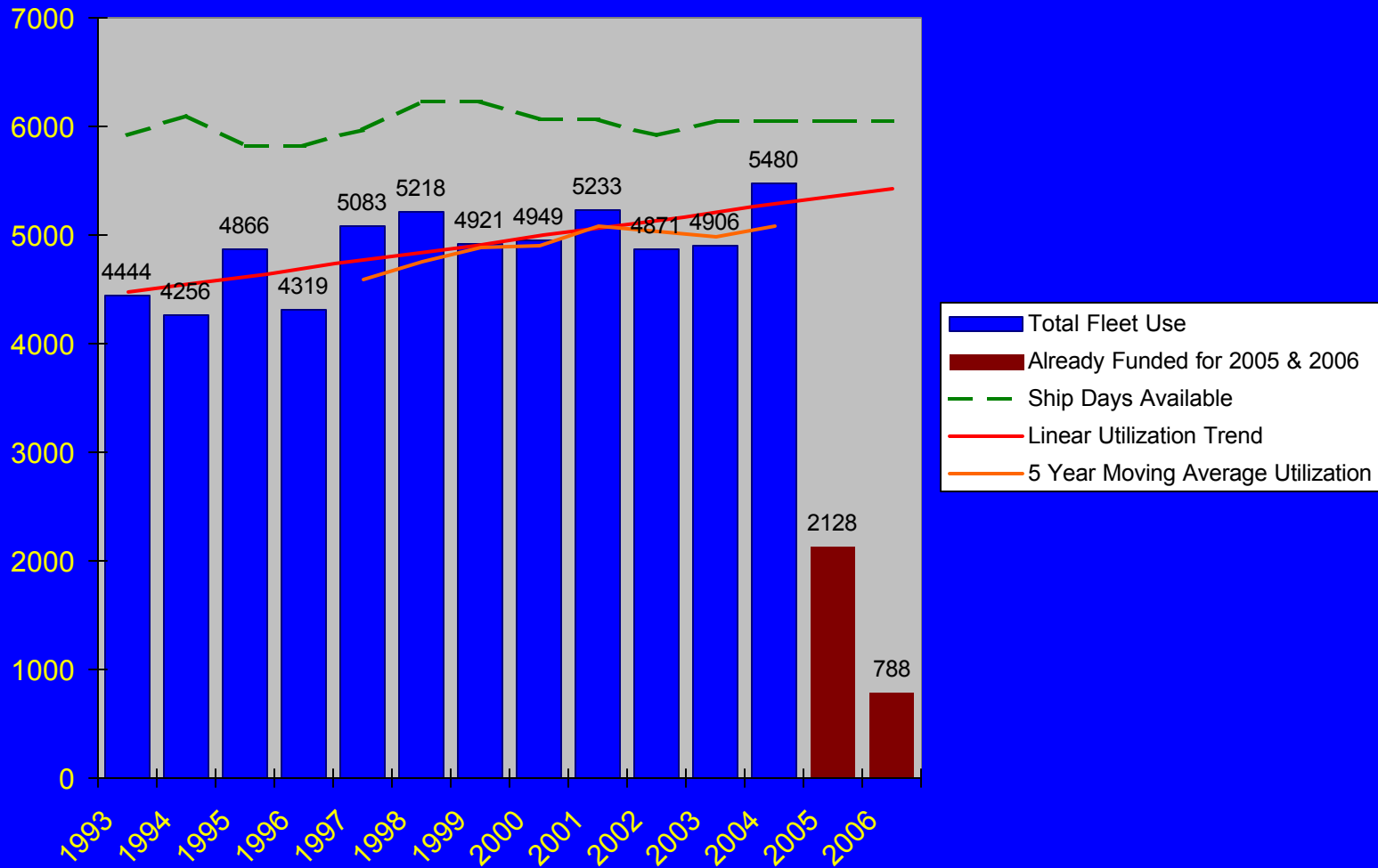
Trends and Projections

March 2004

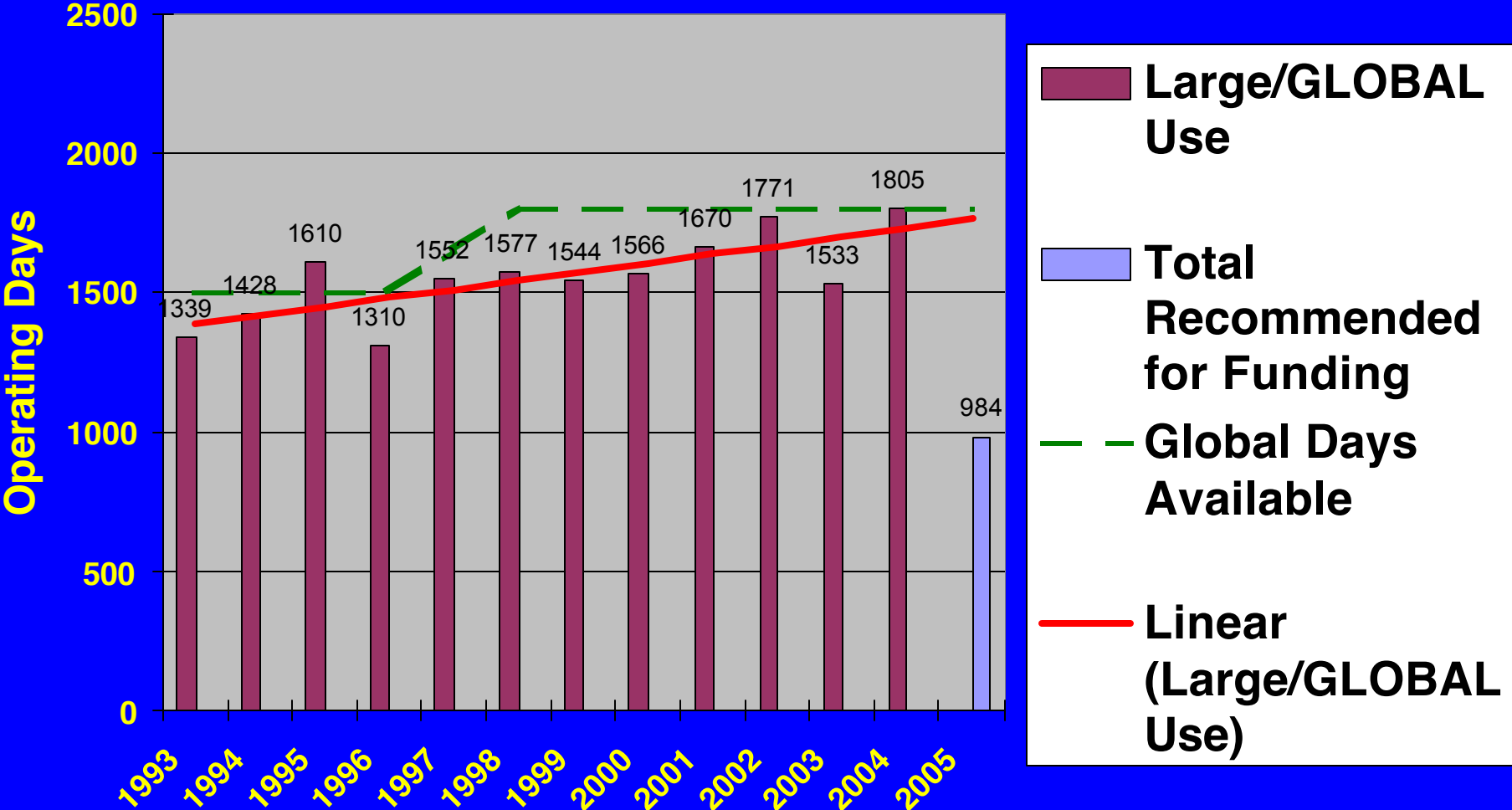
Fleet Use and Projected Use: 1993 - 2005



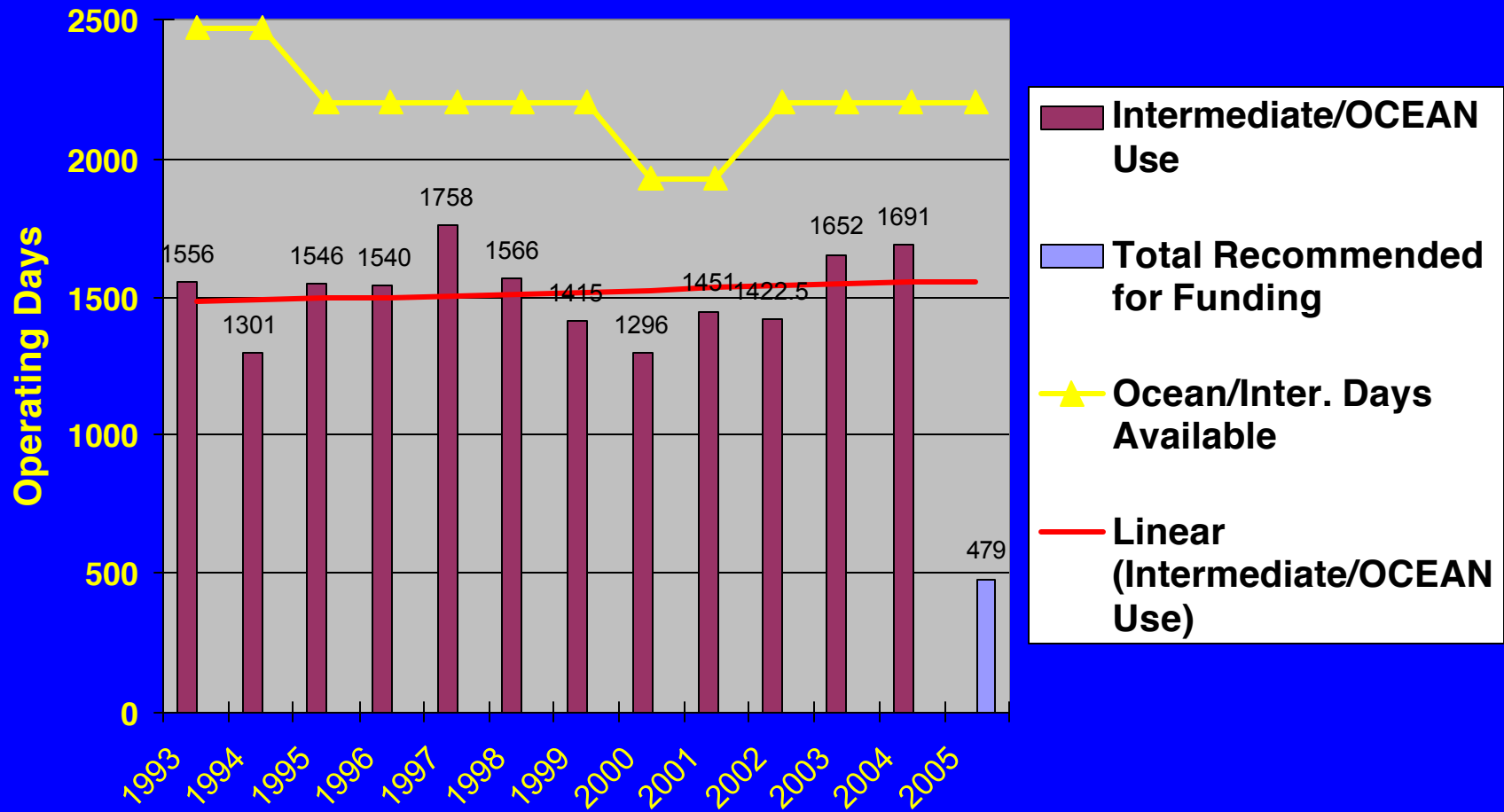
Fleet Utilization Trends



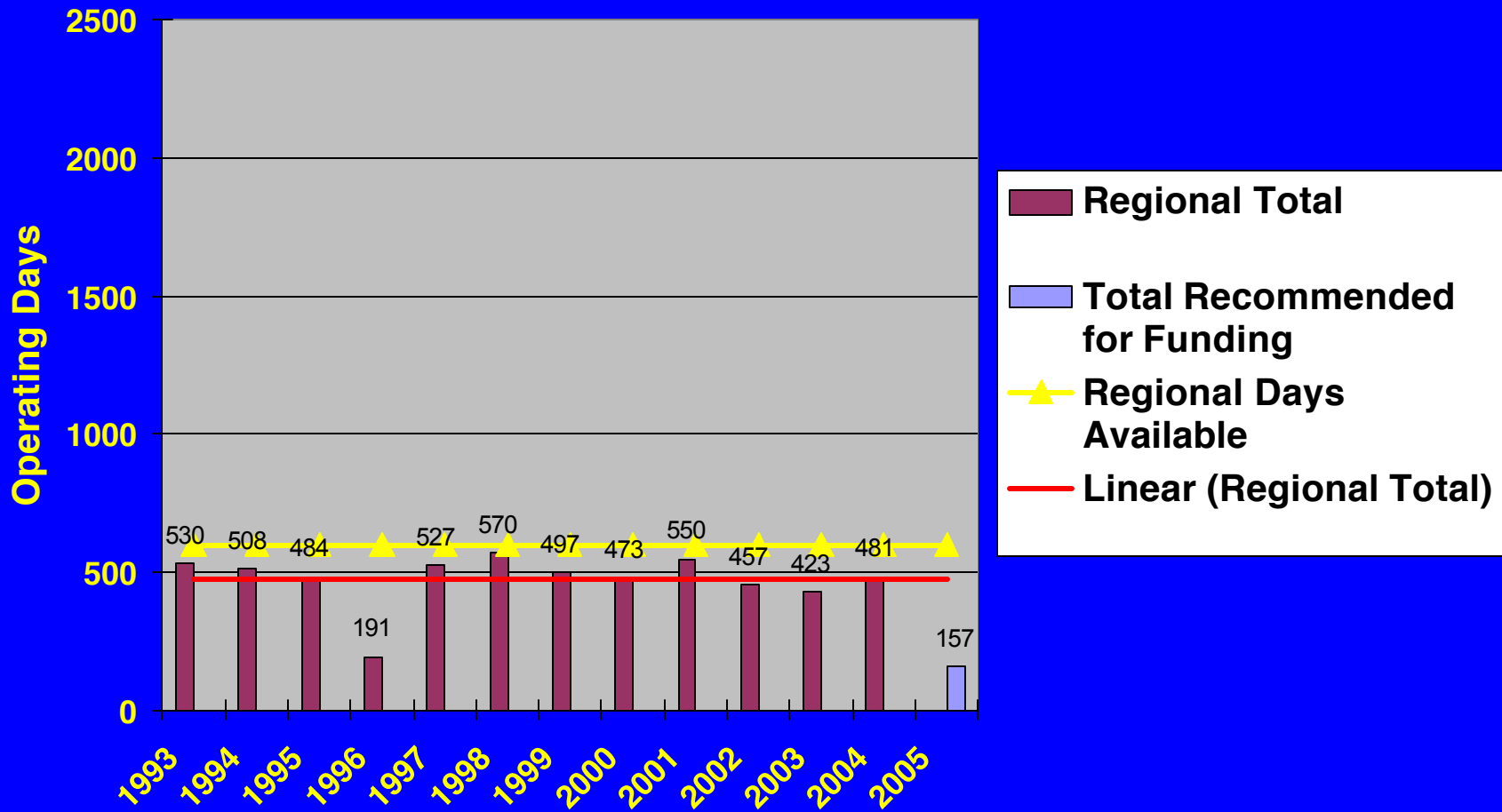
Global Utilization Trends



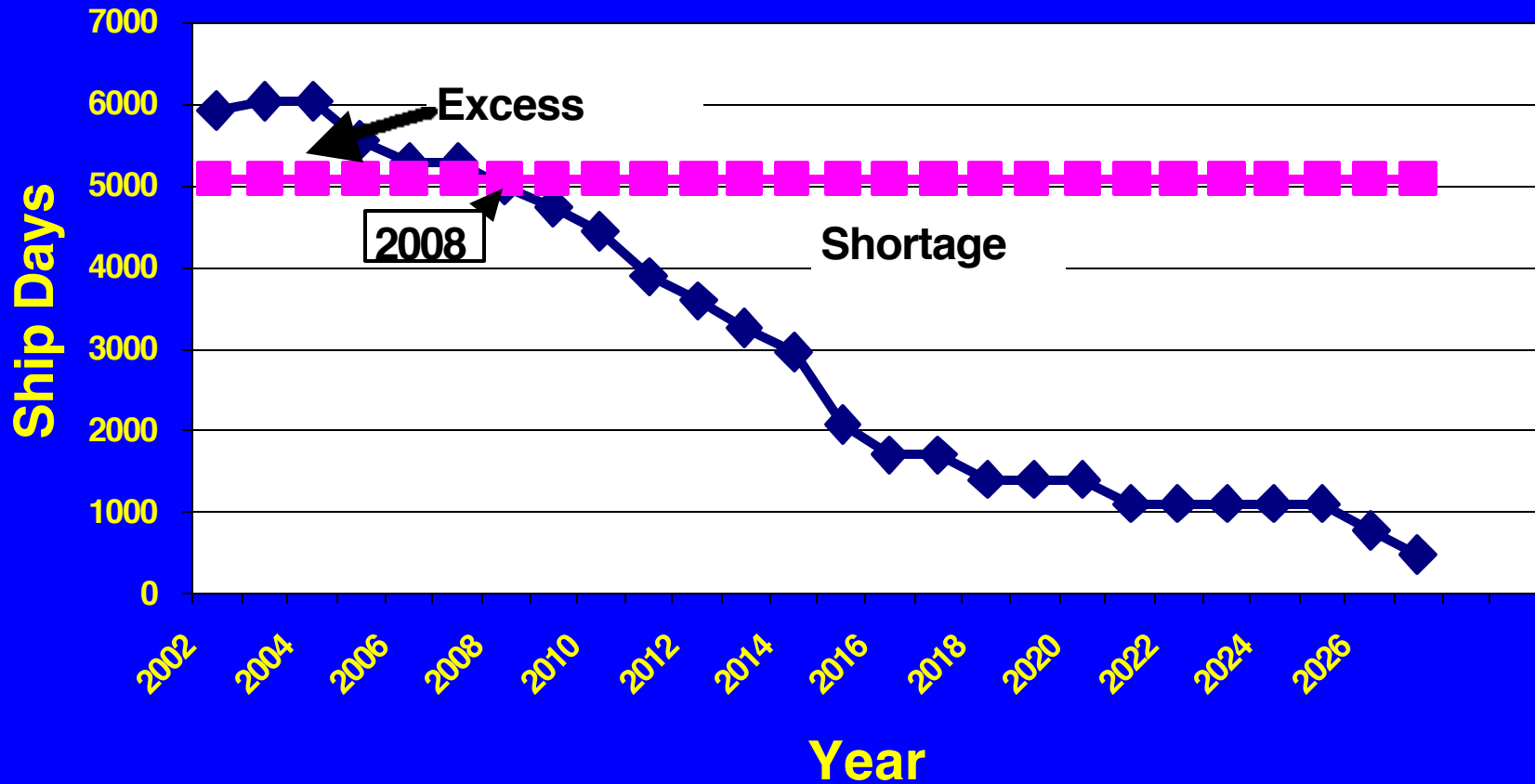
Intermediate/Ocean Class Utilization



Regional Class Utilization



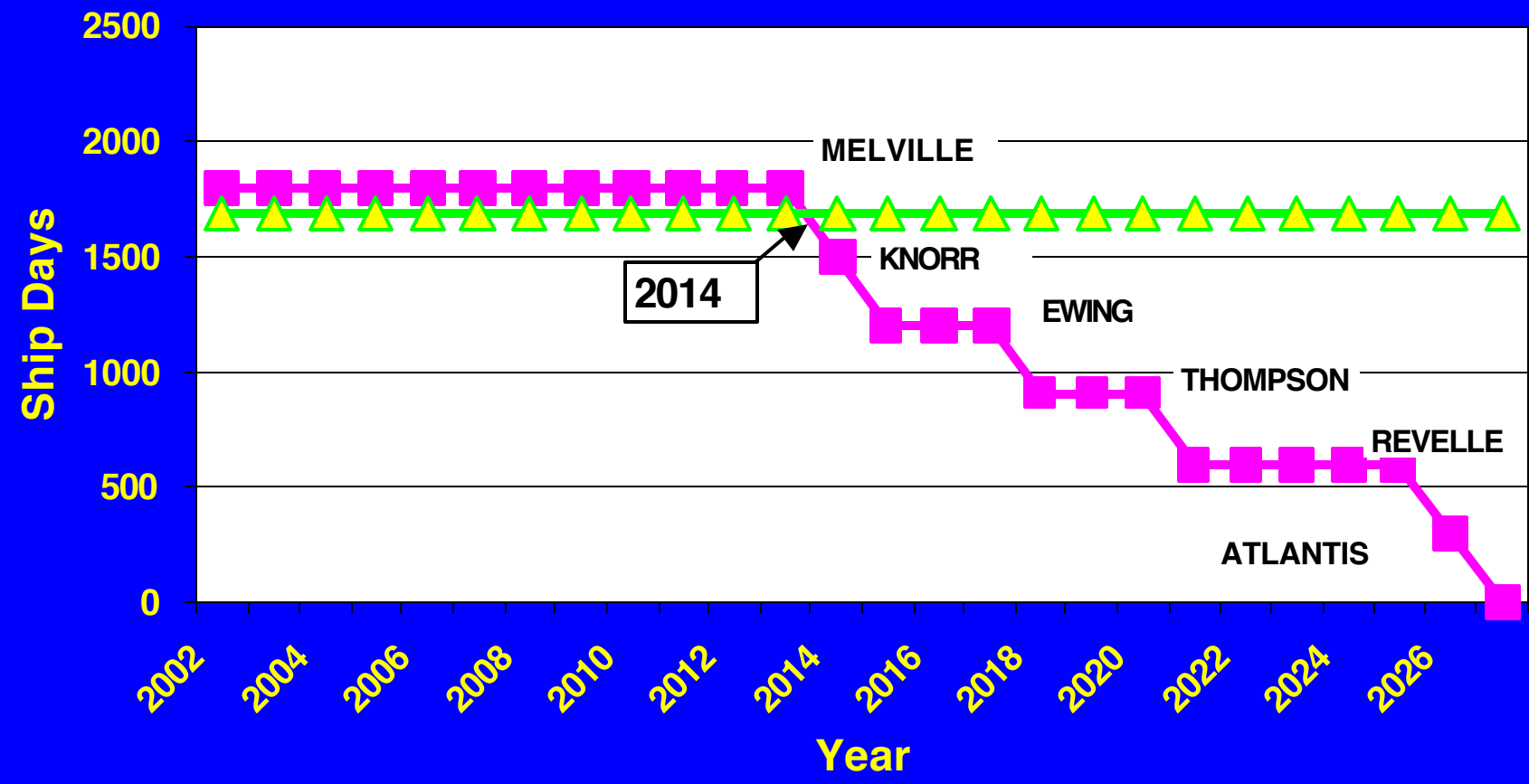
Total Ship Days Available vs Average Ship Days Needed



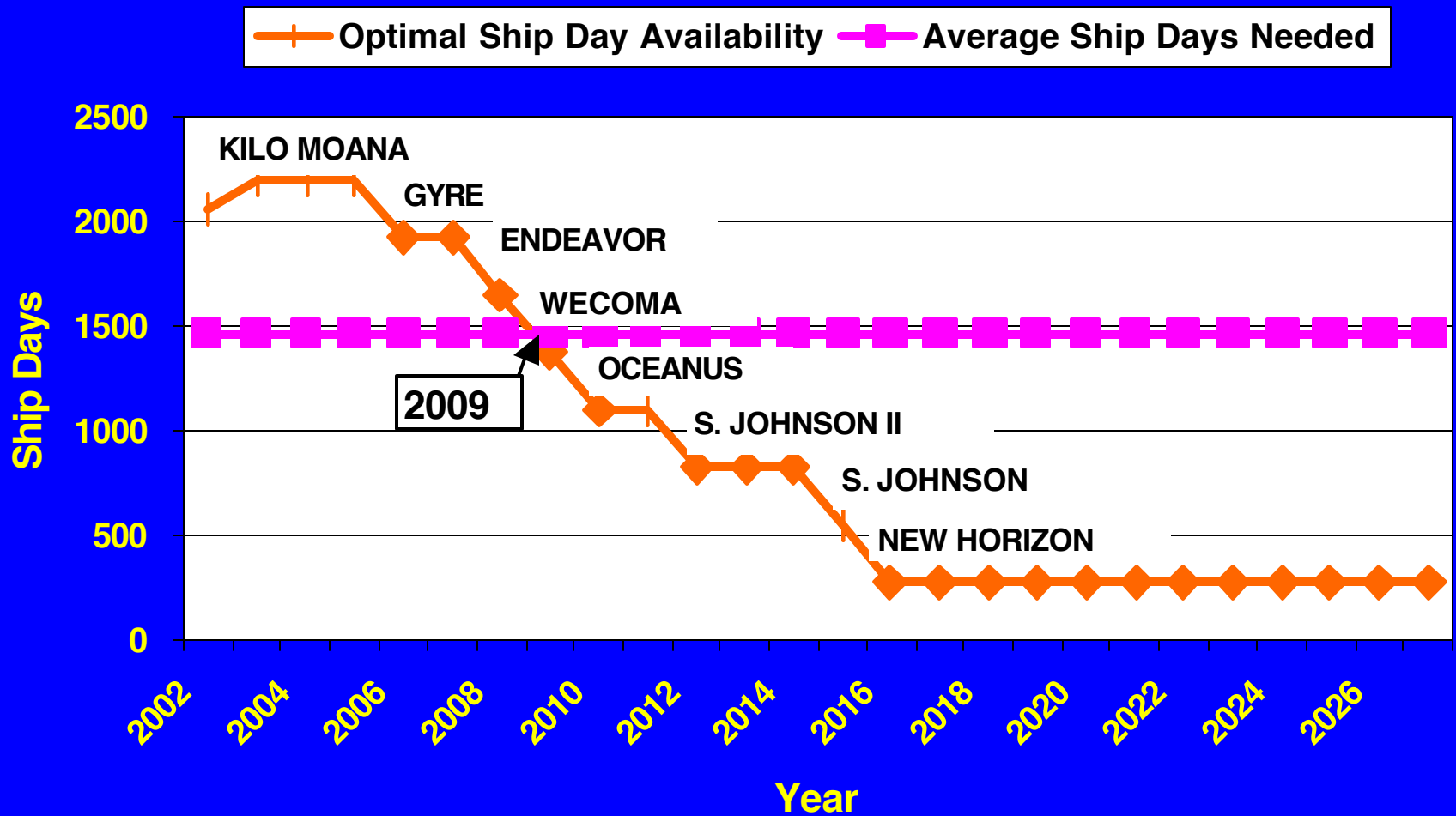
◆ Ship Days Available ■ Average Ship Days Needed

Global - Optimal Ship Days vs Average Days Needed

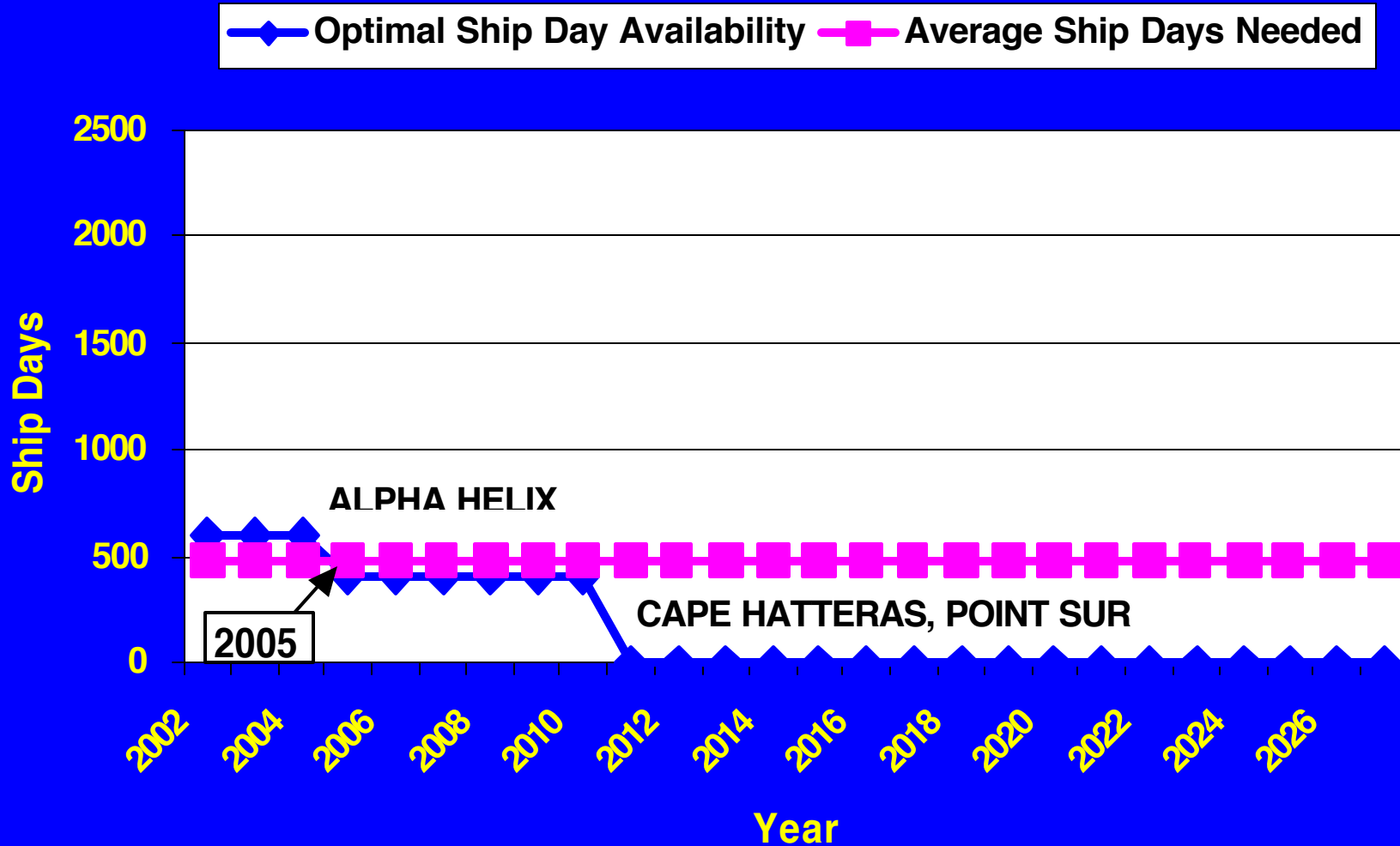
Optimal Ship Day Availability Average Ship Days Needed



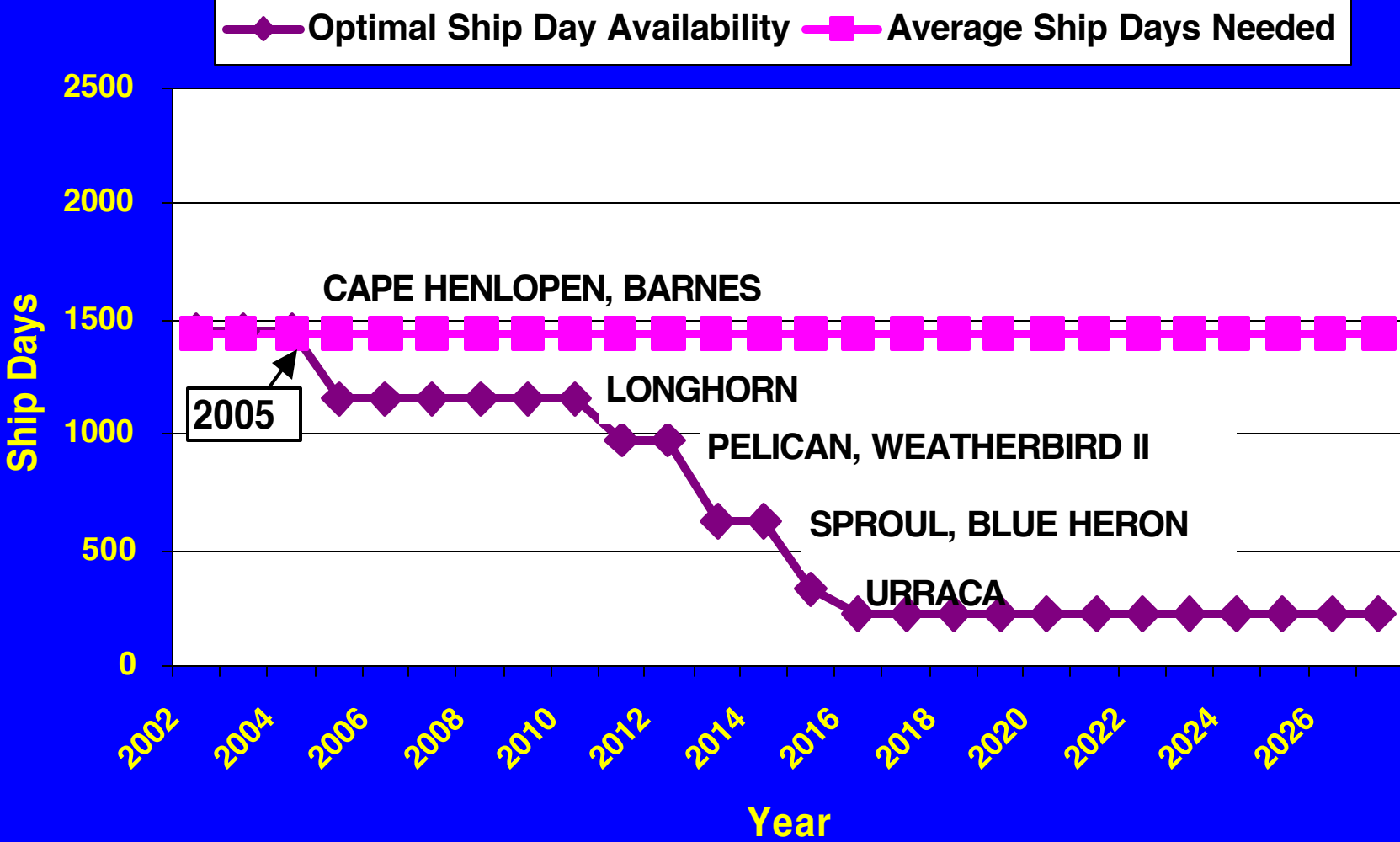
Ocean Class - Optimal Ship Days vs Average Days Needed



Regional Class - Optimal Ship Days vs Average Days Needed



Local Class - Optimal Ship Days vs Average Days Needed



FOFC Fleet Definition

<u>Global Ships</u>	<u>LOA</u>	<u>Retired</u>	<u>Entered Fleet</u>
MELVILLE	245/279		
KNORR	245/279		
T.G. THOMPSON	274		1991
ATLANTIS	274		1997
R. REVELLE	274		1996
ATLANTIS II	210	1996	
T. WASHINGTON	209	1992	
EWING	209		

OCEAN SHIPS

MOANA WAVE	172/210	1999	
KILO MOANA	186		2002
SEWARD JOHNSON	170/204		
WECOMA	177/185		
ENDEAVOR	177/184		
GYRE	174/182		
OCEANUS	177		
NEW HORIZON	170		
ISELIN	170	1994	
SEWARD JOHNSON II	168		(ex EDWIN LINK)

REGIONAL SHIPS

POINT SUR	135
CAPE HATTERAS	135
ALPHA HELIX	133

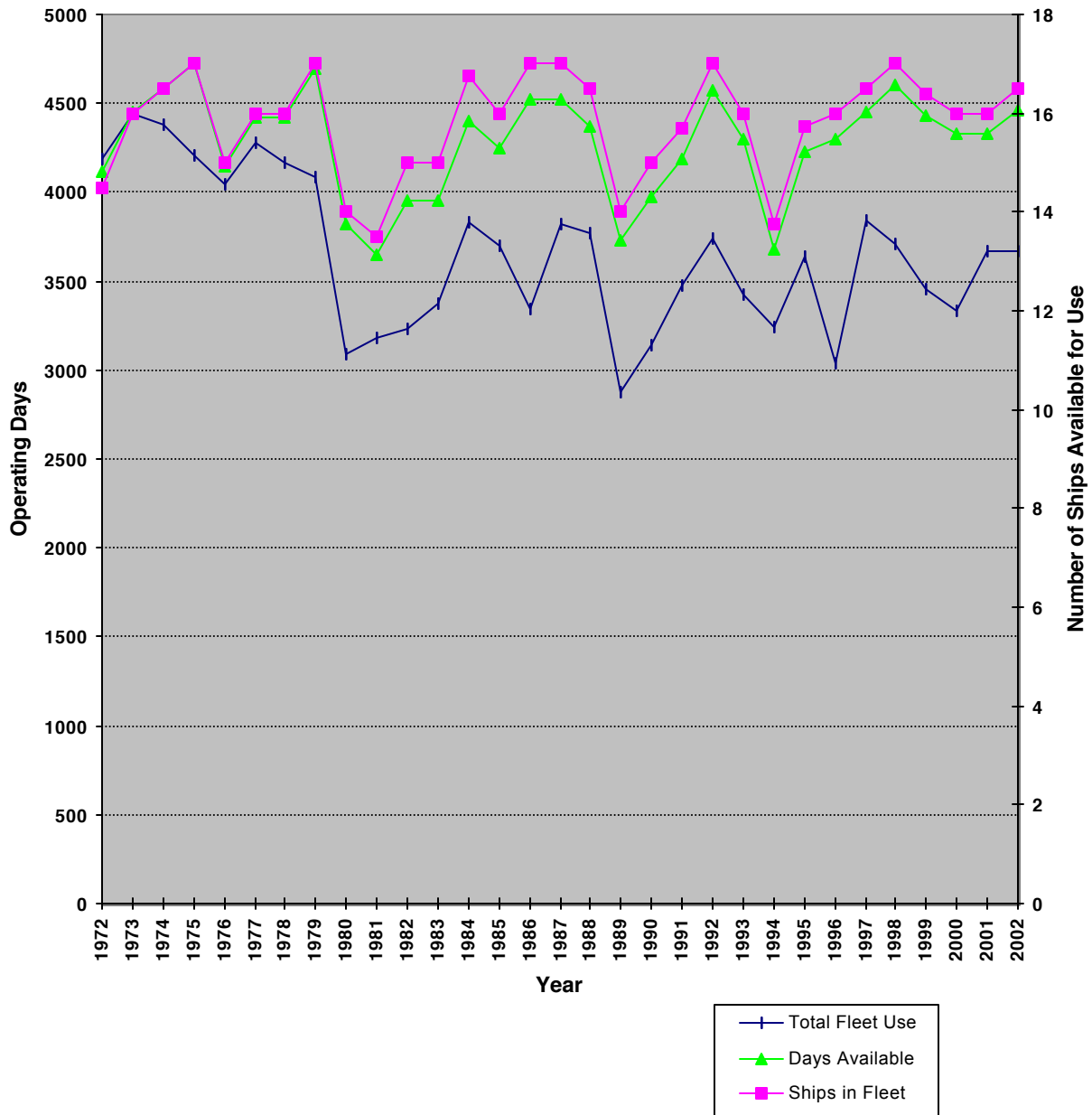
LOCAL SHIPS

R. SPROUL	125		
CAPE HENLOPEN	120		
WEATHERBIRD II	115		
EDWIN LINK	113	2001	1994 (ex SEA DIVER)
LONGHORN	80/105		
PELICAN	105		
URRACA	96		1998
SAVANNAH	91		2001
BLUE HERON	86		2000
LAURENTIAN	80	2001	
BLUE FIN	72	2001	
BARNES	66		
CALANUS	64	1999	
WALTON SMITH	96		2000

FOFC Recommended Definition of a Full Operating Year (FOY):

<u>Class</u>	<u>Length</u>	<u>FOY (days)</u>
GLOBAL		300
OCEAN		275
REGIONAL		200
LOCAL	100-130 ft.	180
LOCAL	<100 ft.	110

UNOLS Vessels >150 ft: Days Available, Days Used, and Number of Ships

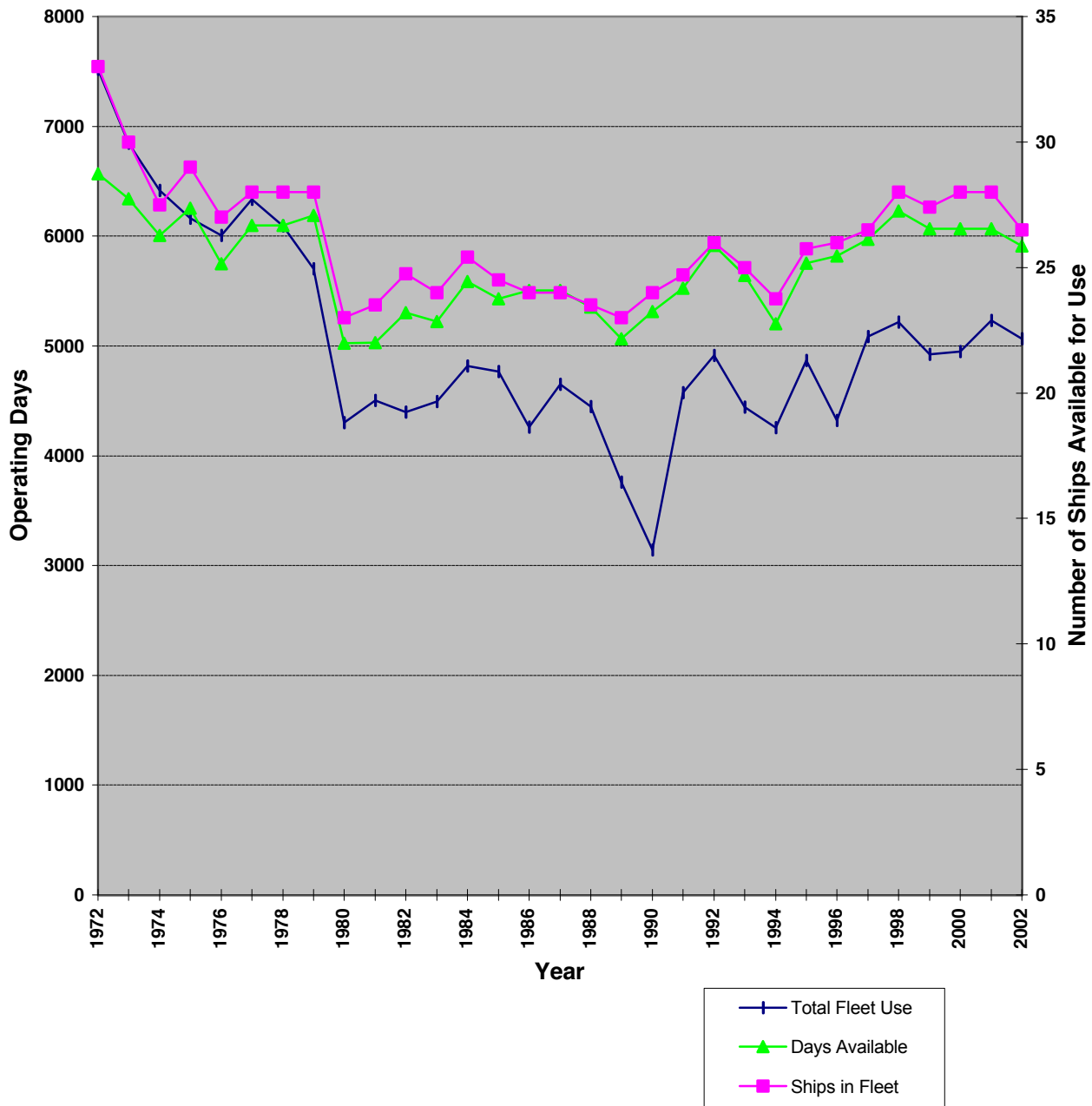


This chart shows the utilization of UNOLS Vessels >150 ft by year as well as the number of ships available for use. Also shown are the total days for a Full Operating Year (FOY) as defined by the FOFC Long-Range Fleet Plan.

FOFC Recommended Definition of a Full Operating Year (FOY):

Class	(FOY)
Global	300
Ocean	275
Regional	200

UNOLS Fleet: Days Available, Days Used, and Number of Ships

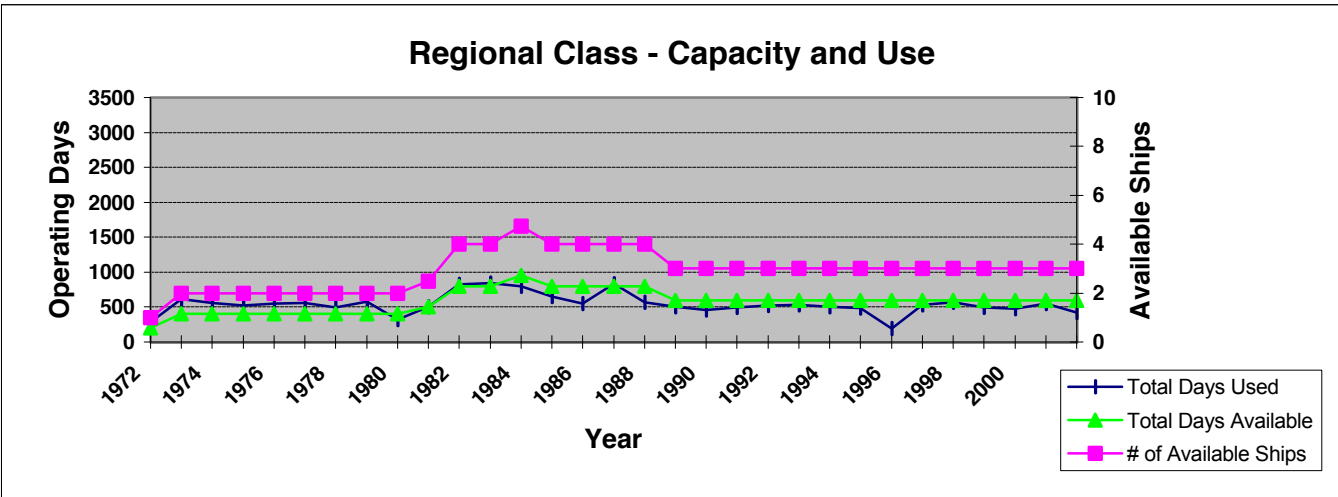
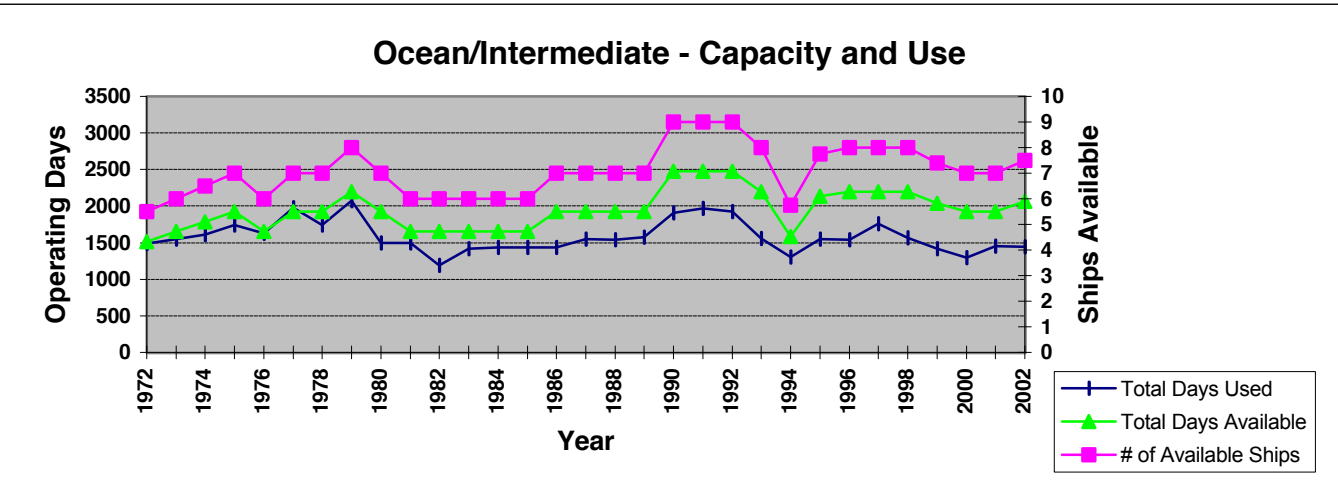
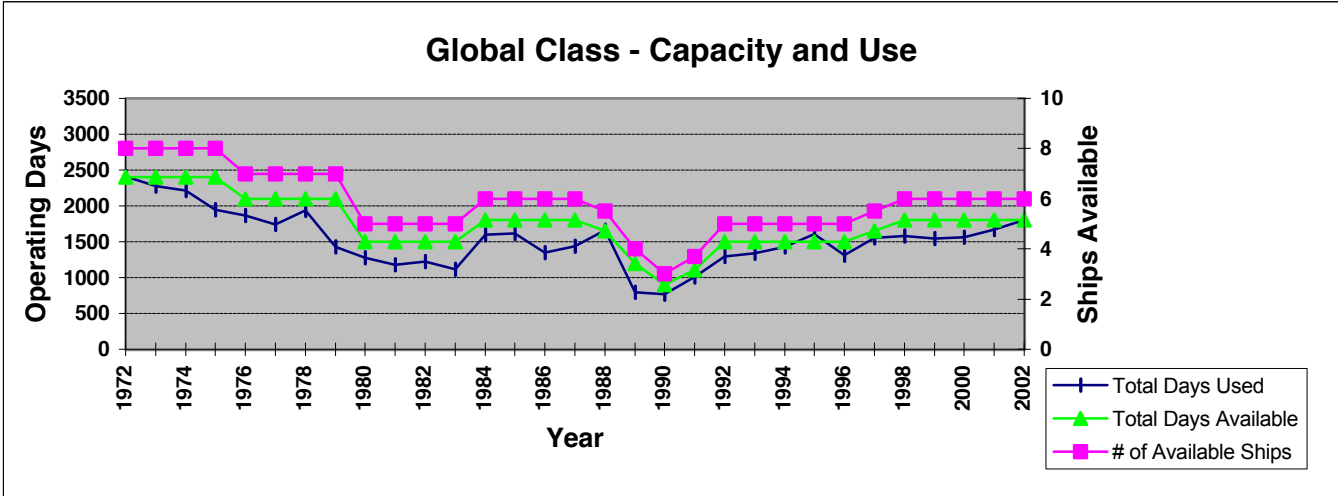


This chart shows the total Fleet utilization by year as well as the number of ships available for use. Also shown are the total days for a Full Operating Year (FOY) as defined by the FOFC Long-Range Fleet Plan.

FOFC Recommended Definition of a Full Operating Year (FOY):

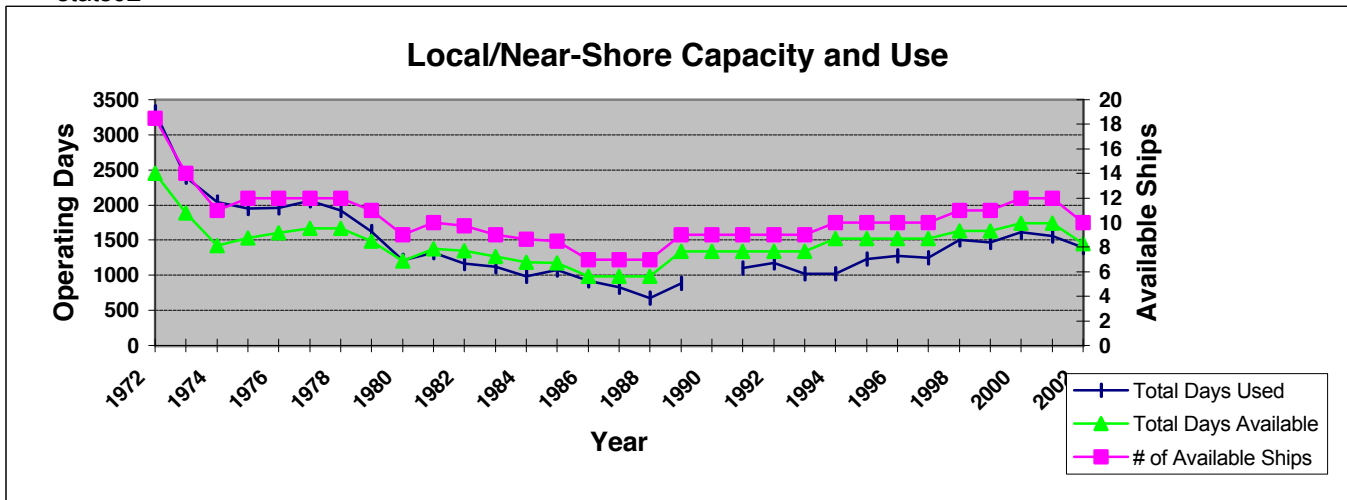
Class	Length	(FOY)
Global		300
Ocean		275
Regional		200
Local	100-150 ft.	150
	<100 ft	110

Fleet Utilization by Class



FOFC Recommended Definition of a Full Operating Year (FOY):

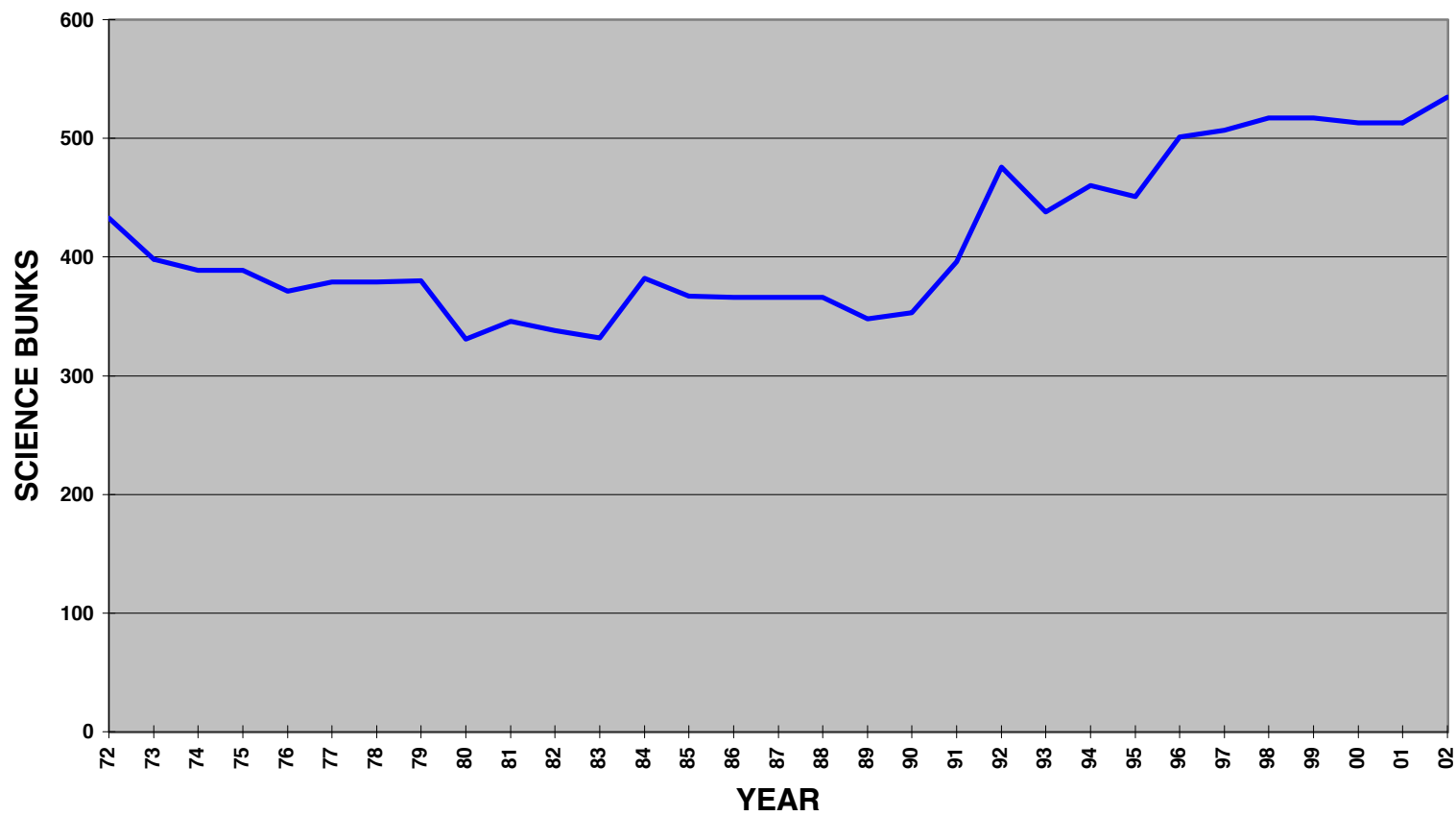
Class	Length	(FOY)
Global		300
Ocean		275
Regional		200
Local	100-150 ft.	150
A. DeSilva	<100 ft	110



FOFC Recommended Definition of a Full Operating Year (FOY):

Class	Length	(FOY)
Global		300
Ocean		275
Regional		200
Local	100-150 ft.	150
	<100 ft	110

UNOLS SCIENCE BERTHS AVAILABLE (1972-2002)



Fleet (>150') Utilization: 1991-2002

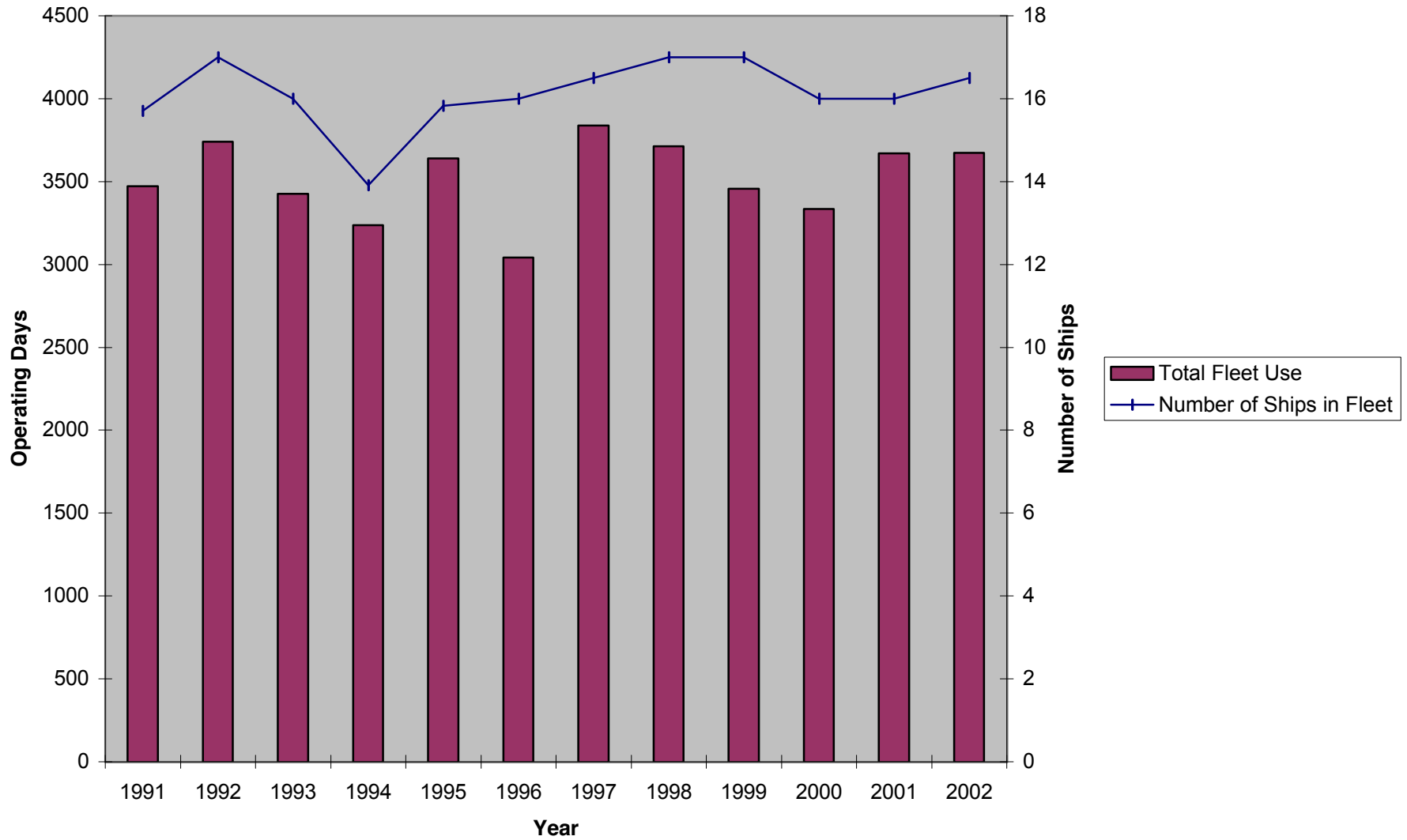
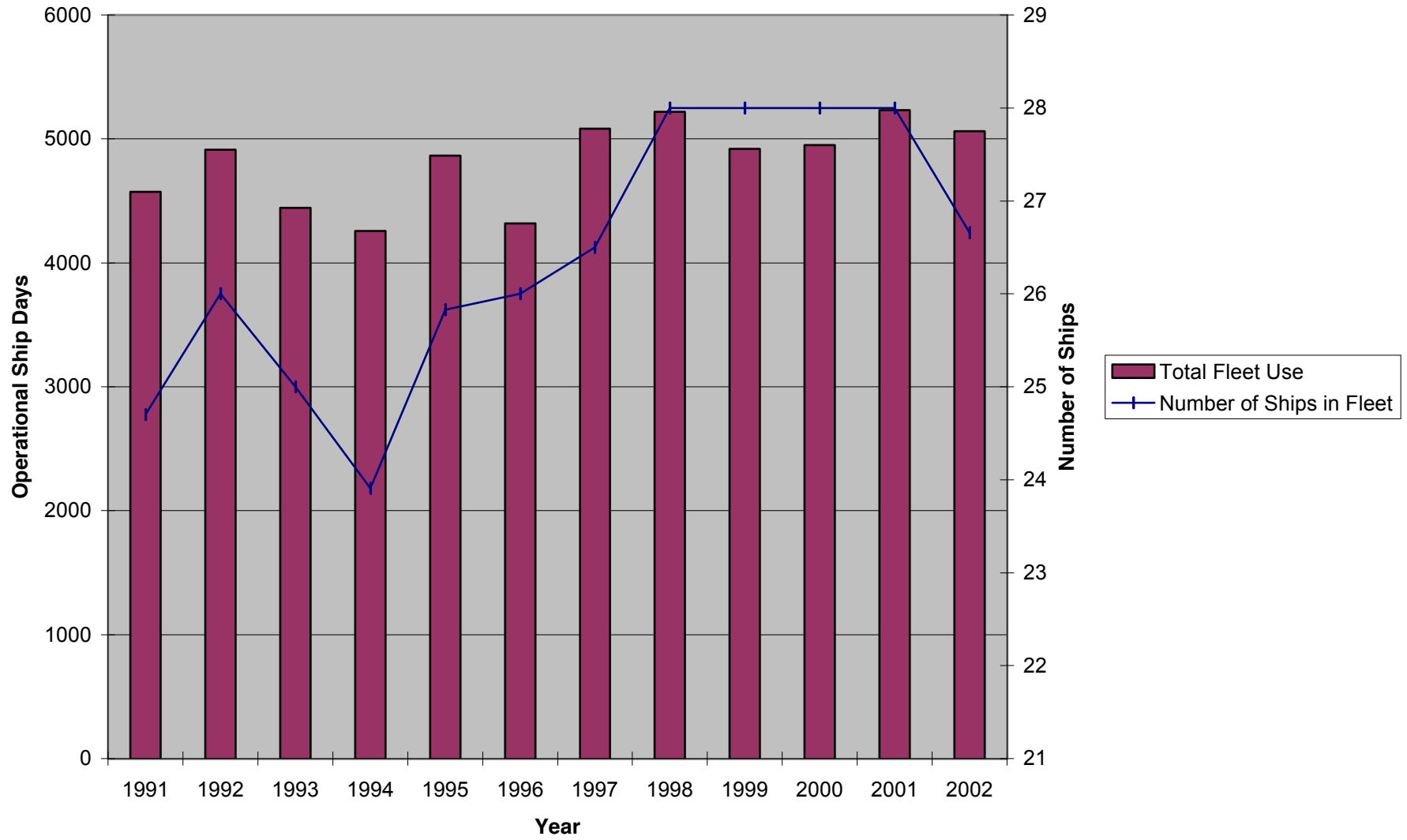
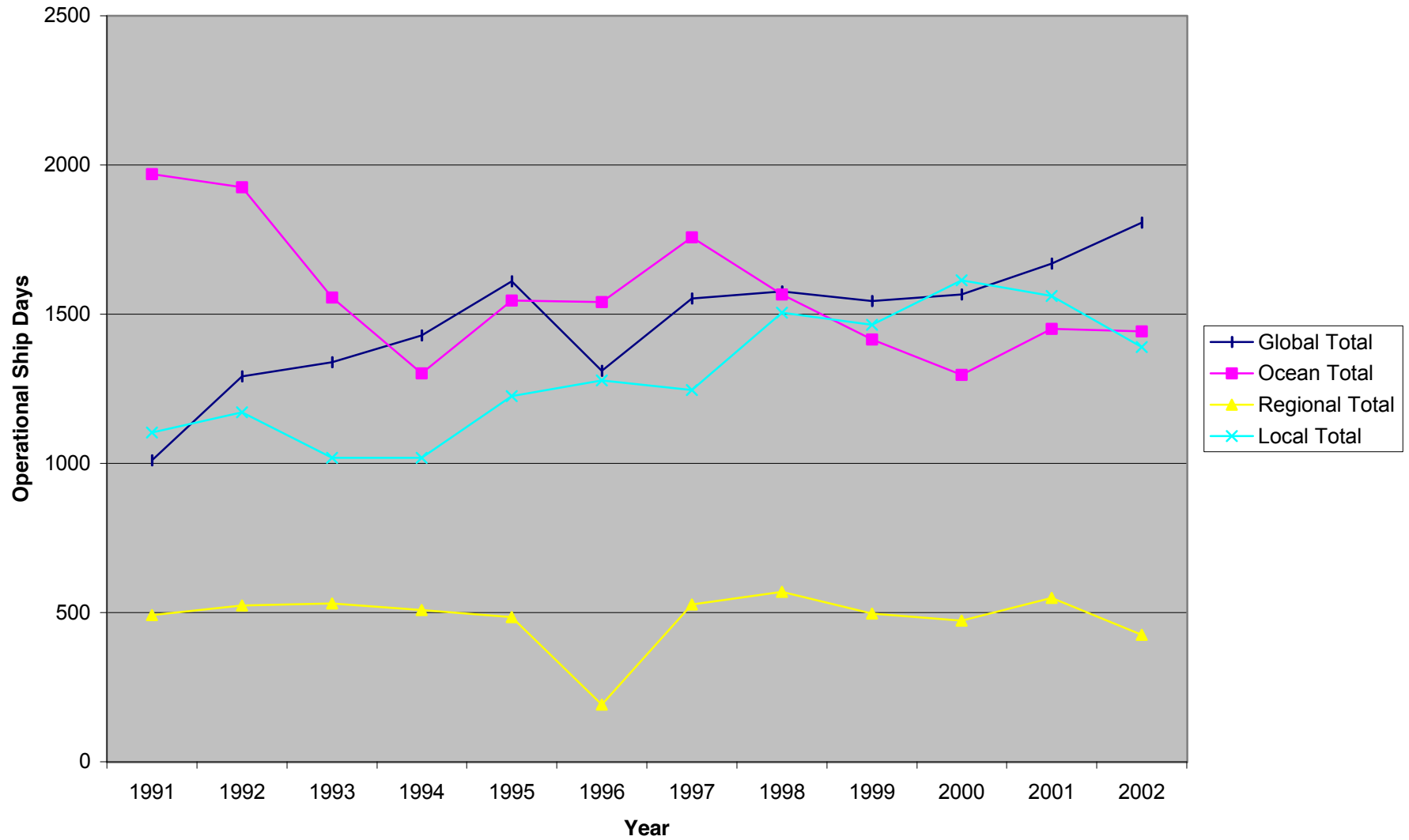


Chart 1- Fleet Utilization

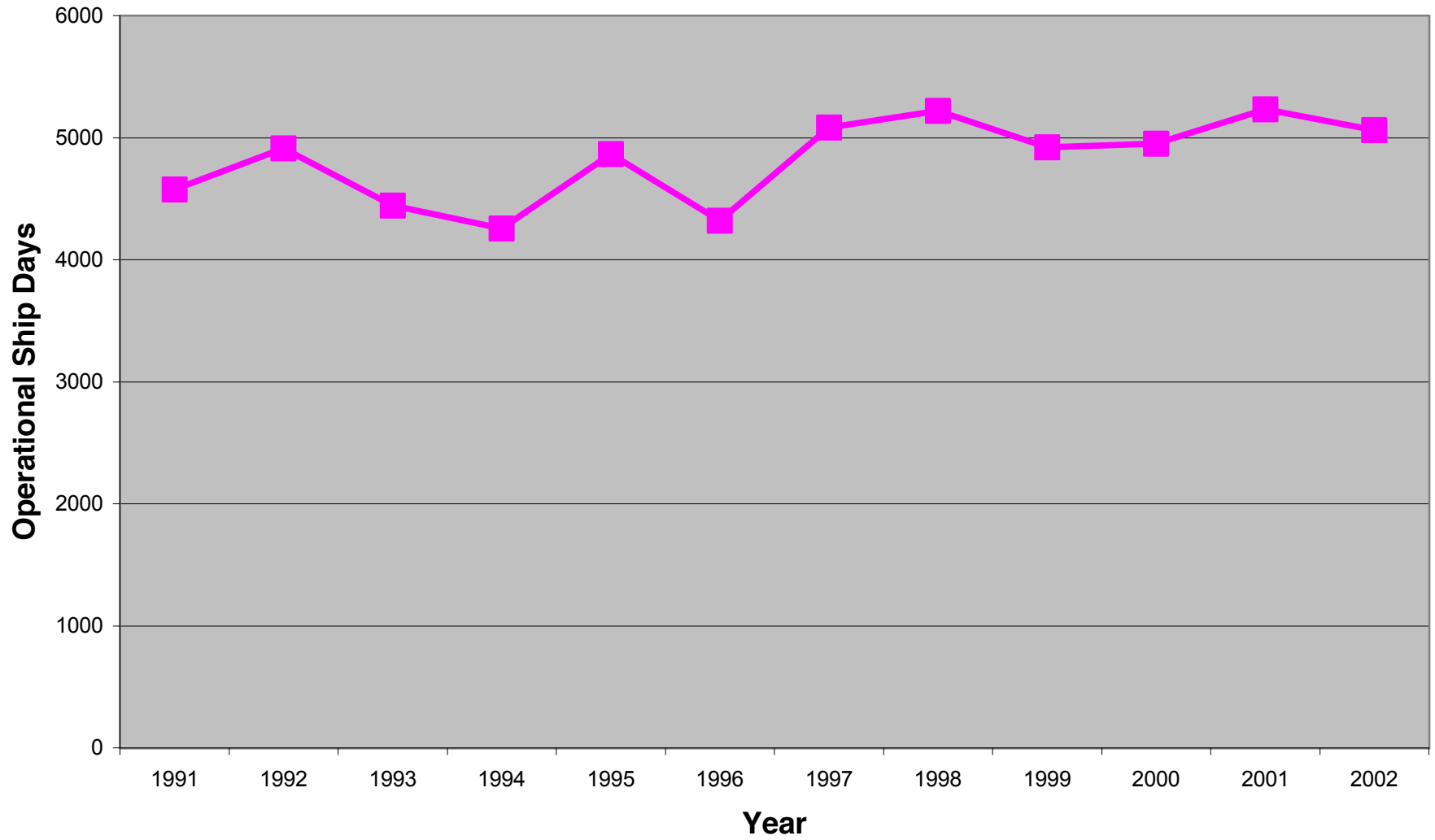
Fleet Utilization: 1991-2002



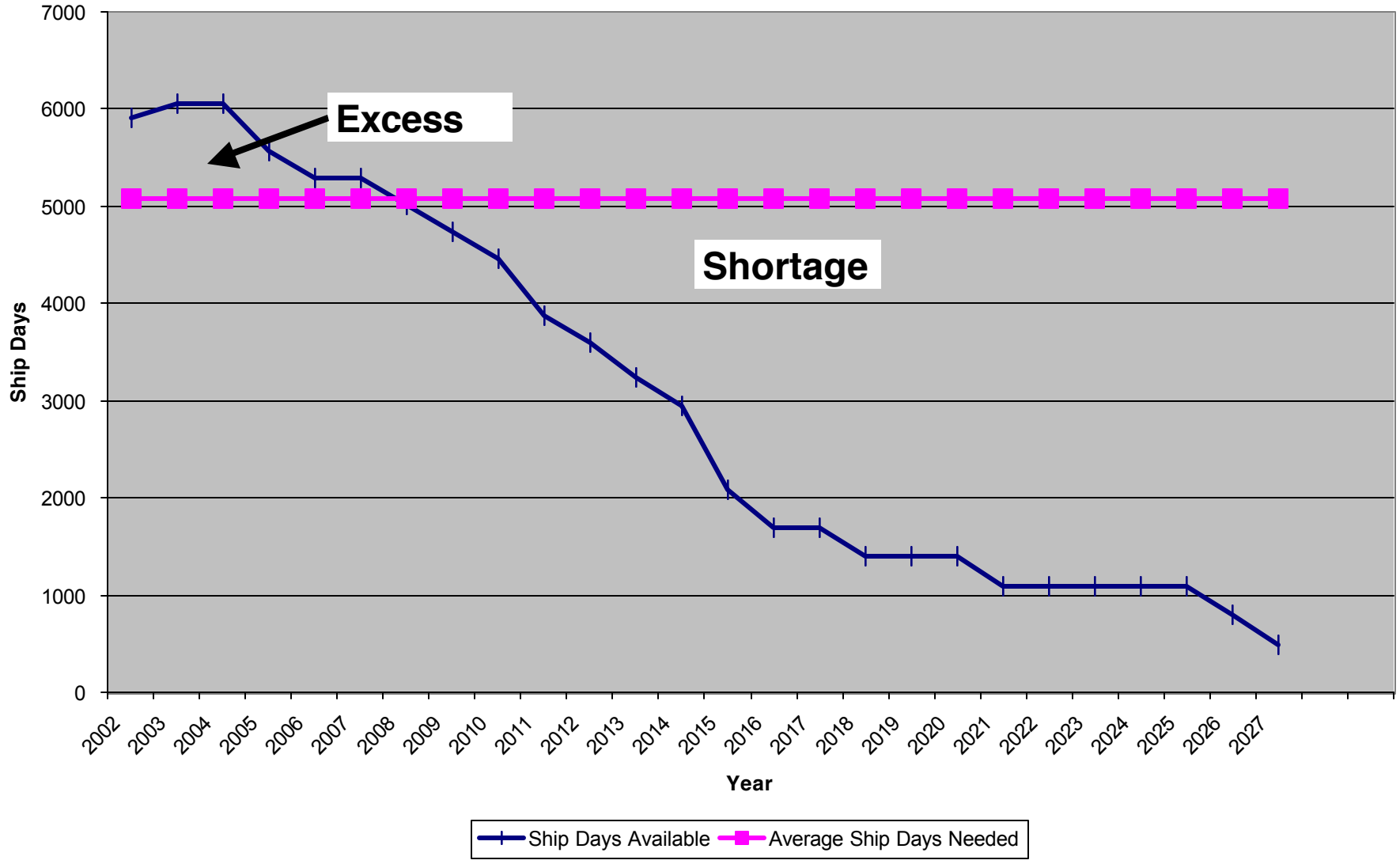
Utilization by Vessel Class: 1991-2002



UNOLS Fleet Utilization (1991-2002)

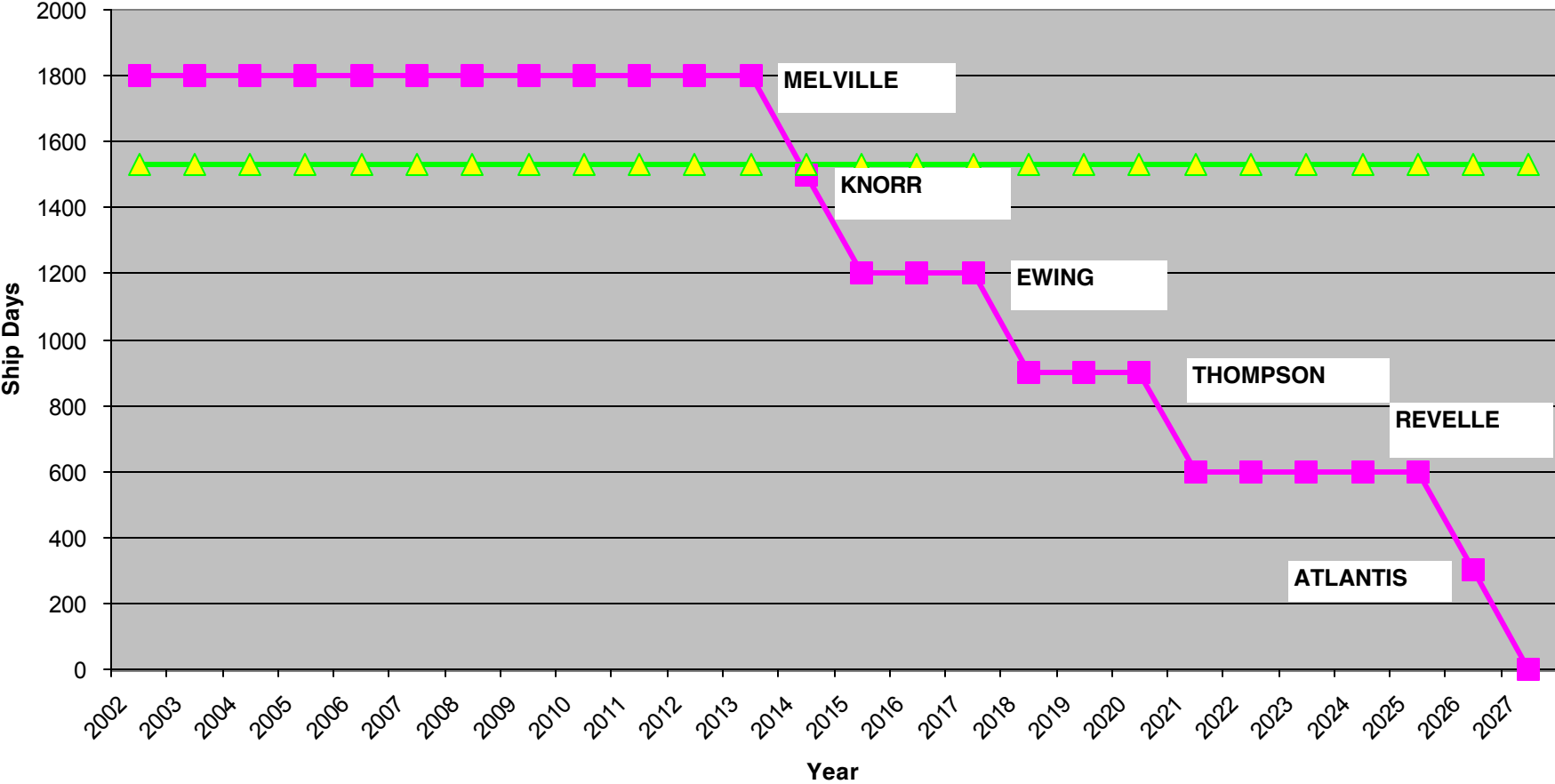


Total Ship Days Available vs Average Ship Days Needed

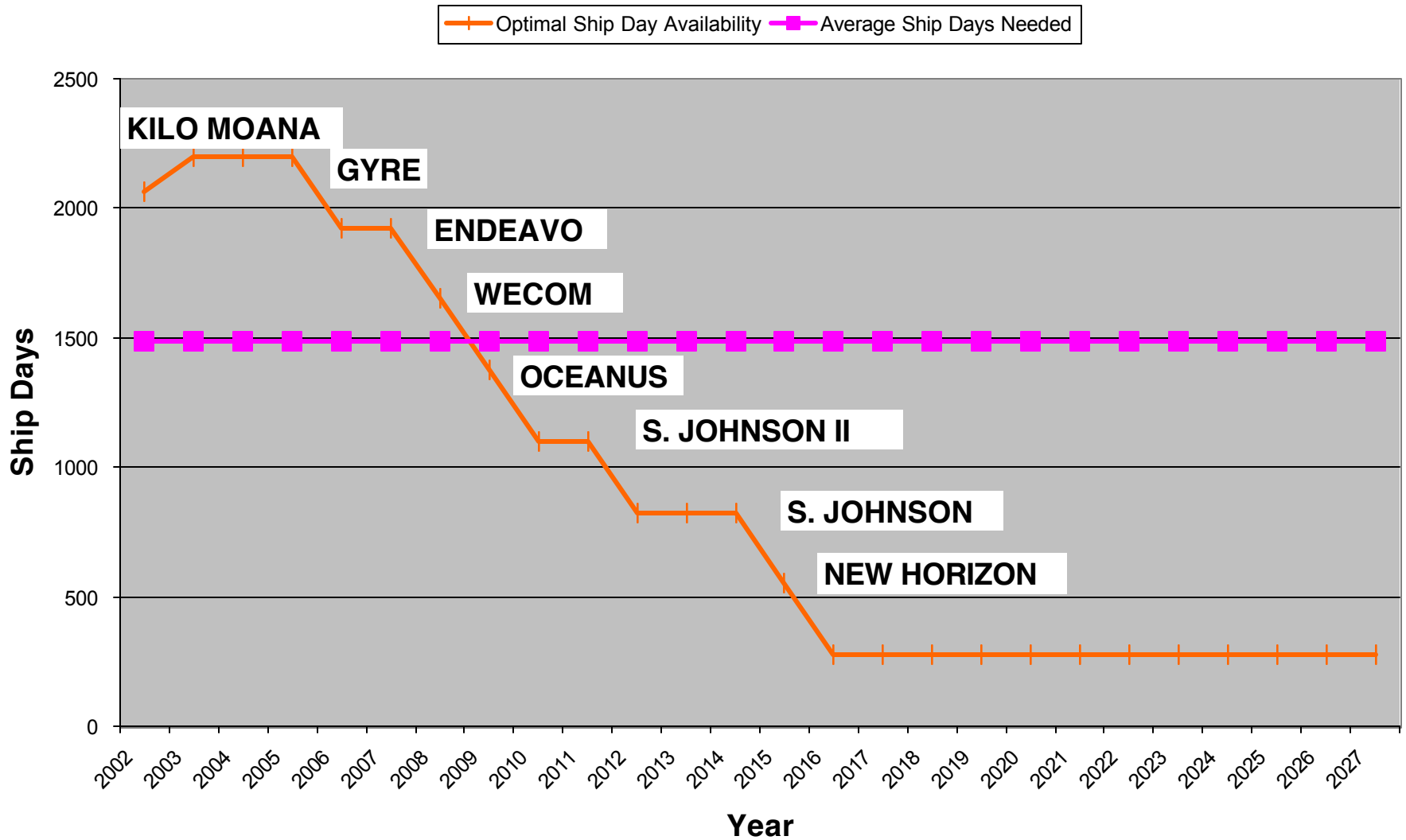


Global - Optimal Ship Days vs Average Days Needed

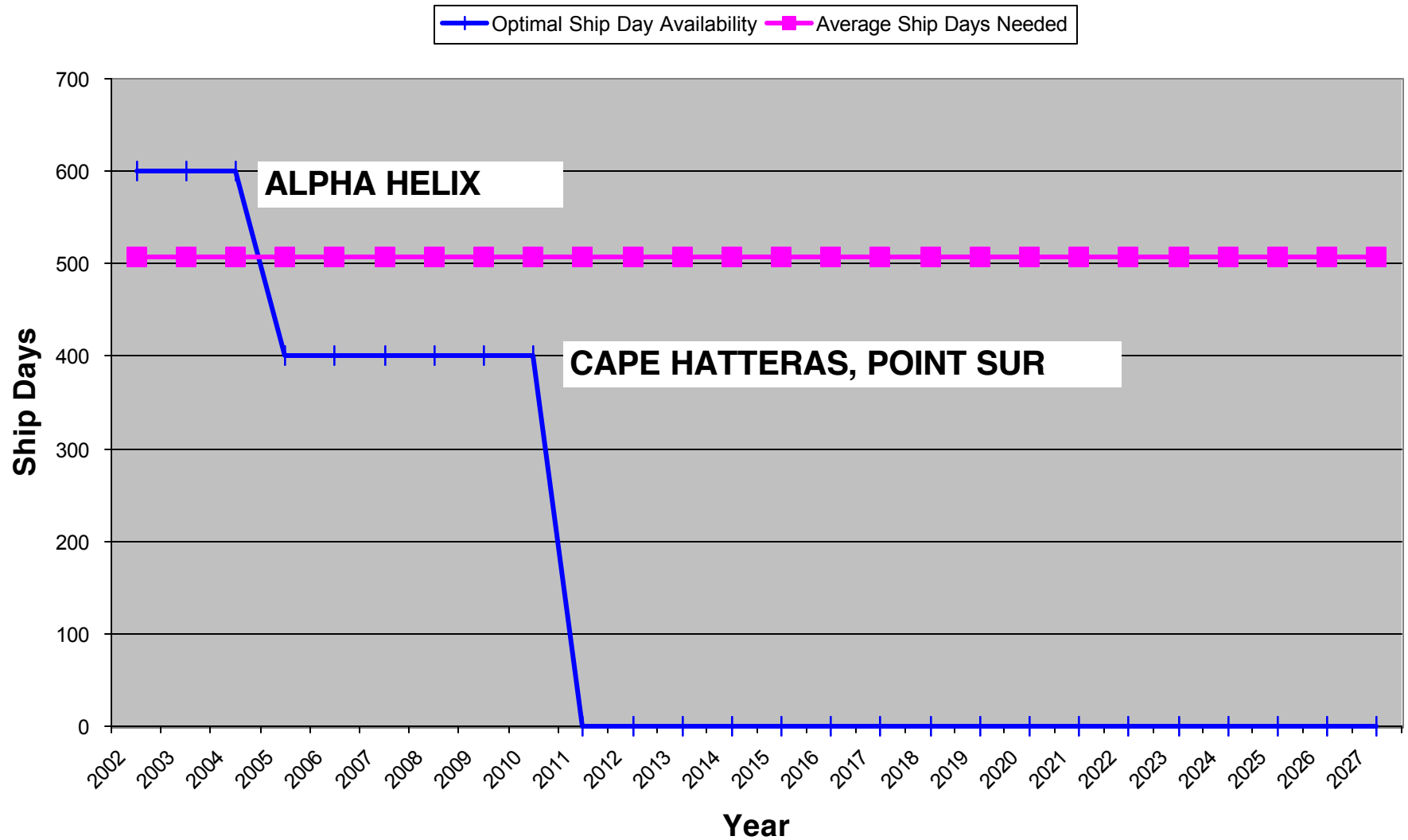
Optimal Ship Day Availability Average Ship Days Needed



Ocean Class - Optimal Ship Days vs Average Days Needed



Regional Class - Optimal Ship Days vs Average Days Needed



Local Class - Optimal Ship Days vs Average Days Needed

