

## STARC Report

June 13, 2018

Presented by: Brett Hembrough

- Dockside and Sea Trials
- Shakedown
- Science Planning
- Local/Remote Network Monitoring
- Other ?

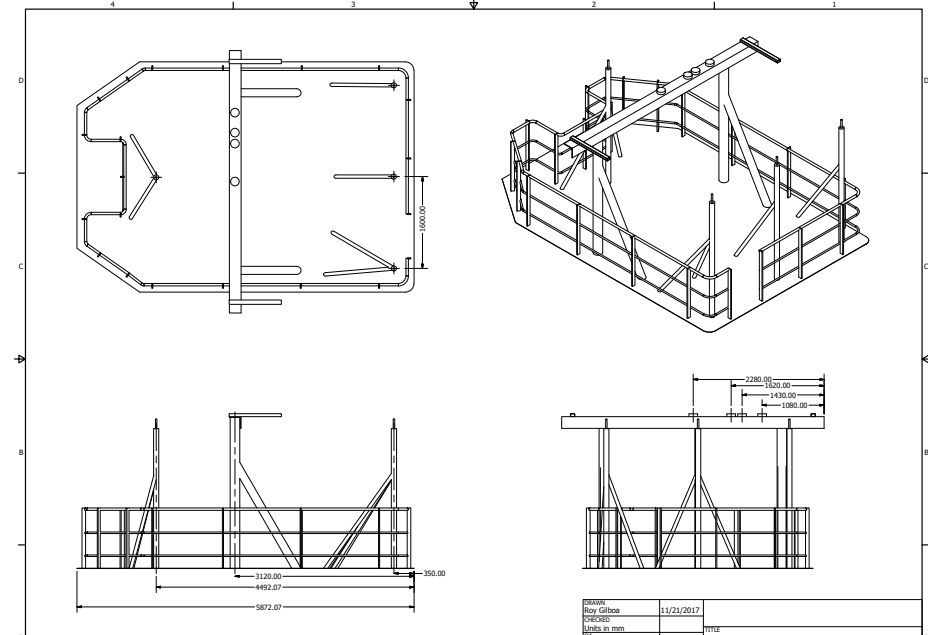


# Dockside Projects



## STARC onsite 1-2 weeks per month

- HCO Antenna – reinstalled
  - PosMV mount improvements
  - ABX-Two (AshTech replacement)
- Additional Ultrasonic Wind - HCO
- Serviced/calibrated sensors installed
- New UltraPure water system
  - MilliQ – IQ7000 – Bio Lab
  - Both systems serviced by Millipore Tech
- Bow stuff tubes finished



# Dockside Projects

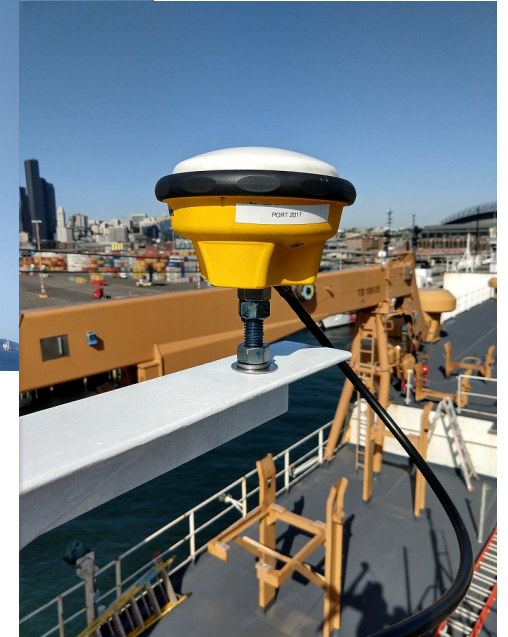
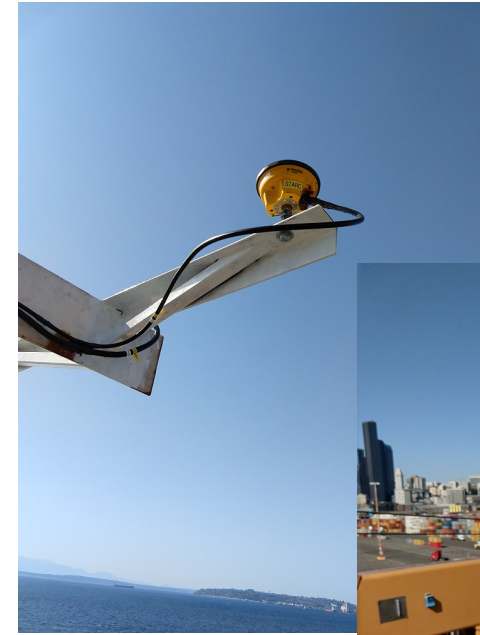
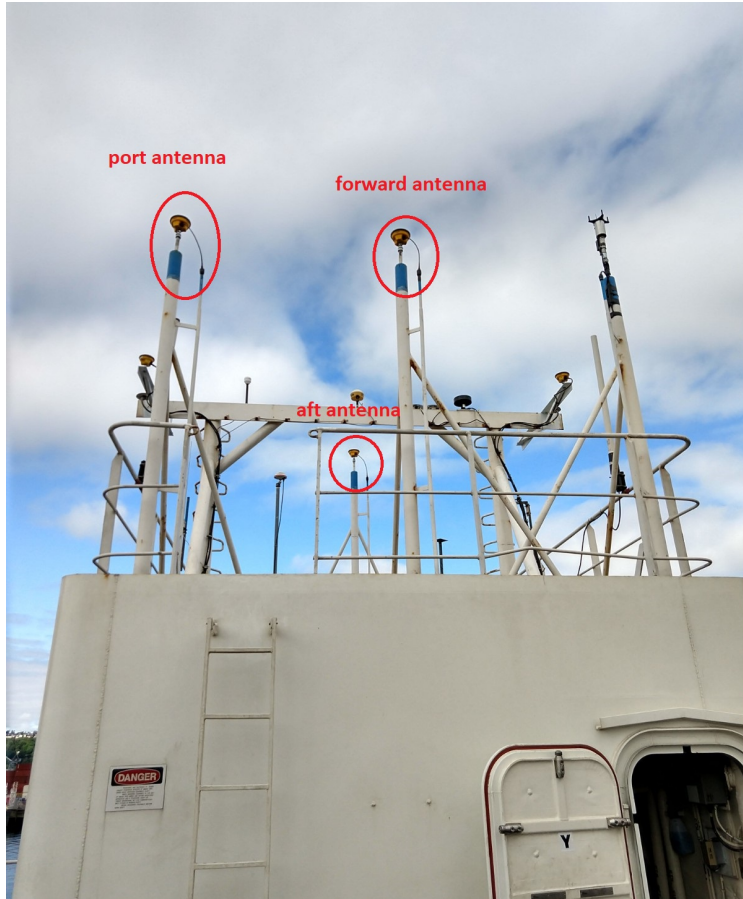


- New pco2 computer and software update
  - Gas bottle exchanges
    - Site visit - NOAA
- Gravimeter reinstalled
  - Factory calibration/service.
    - Site visit – PFPE





# Dockside Projects

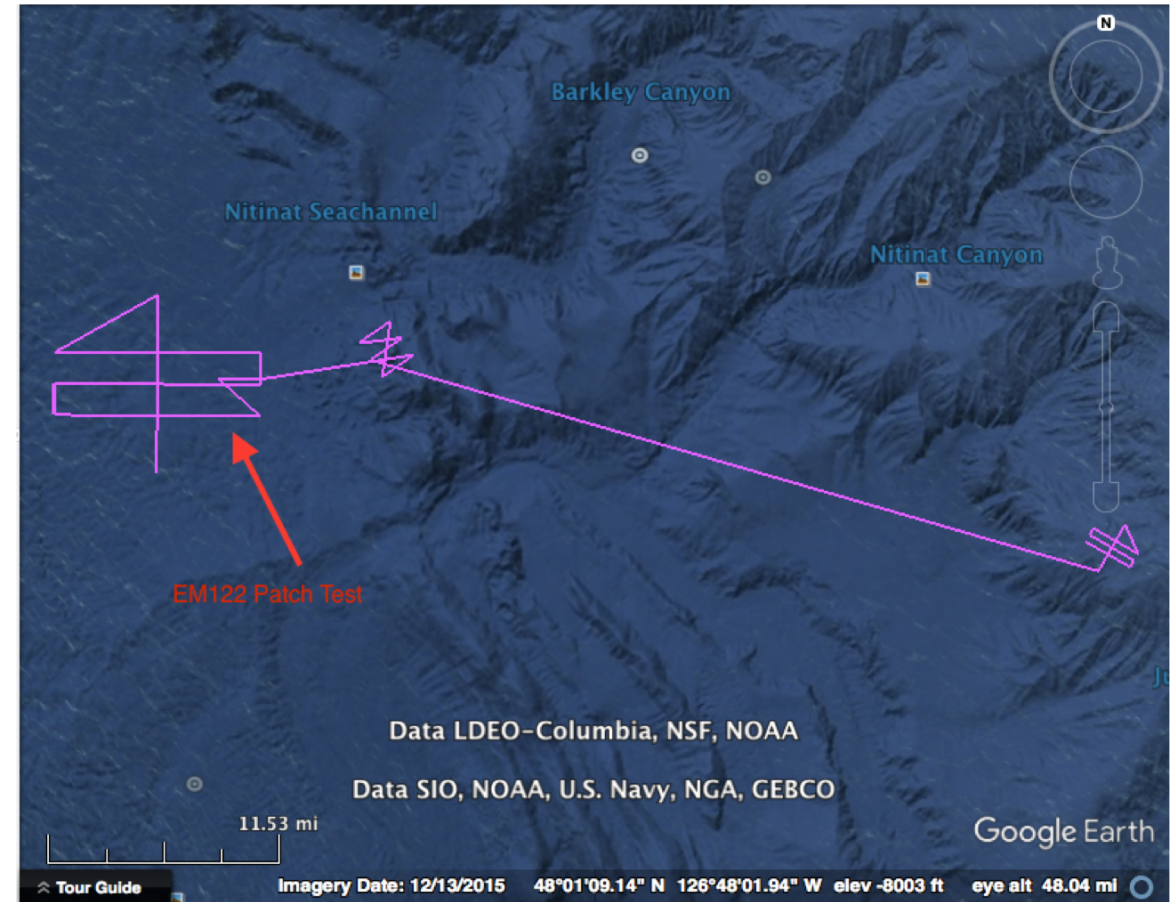




# Sea Trials May 29 –Jun1



- UHDAS aboard to update and evaluate ADCP
  - Integrate new ABX-Two
- PosMV GAMS Calibration
- Patch Test on PosMV
  - XBTs
- Exercised aft winches
  - 9/16
  - .322

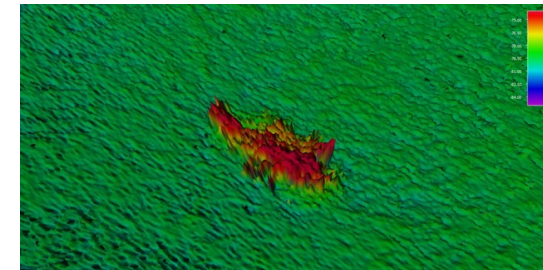
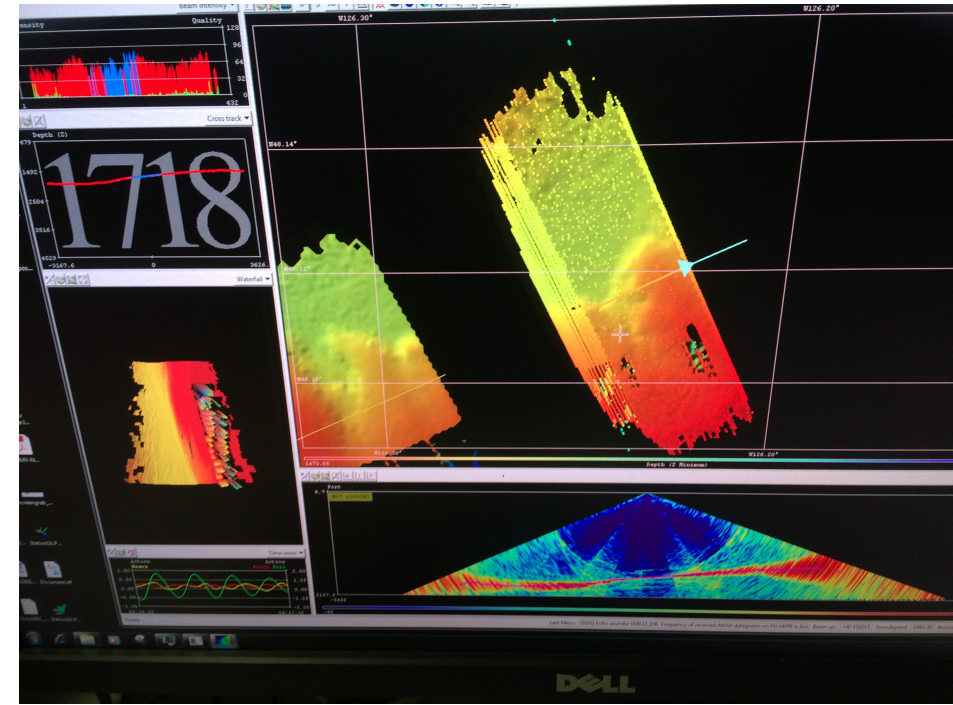


# Shakedown June 18 to July 3



## Leg 1 – Seattle to San Diego

- Patch Test for Seapath
- Underway Training – UNOLS/STARCL
  - SIS training provided by SIO techs
  - QPS Trainer onboard
    - Qinsy, Qimera, Fledermaus
    - In Situ – tech specific, data QA
    - Survey design
  - UHDAS / ADCP / Serial Comms – Toby Martin
- CTDs



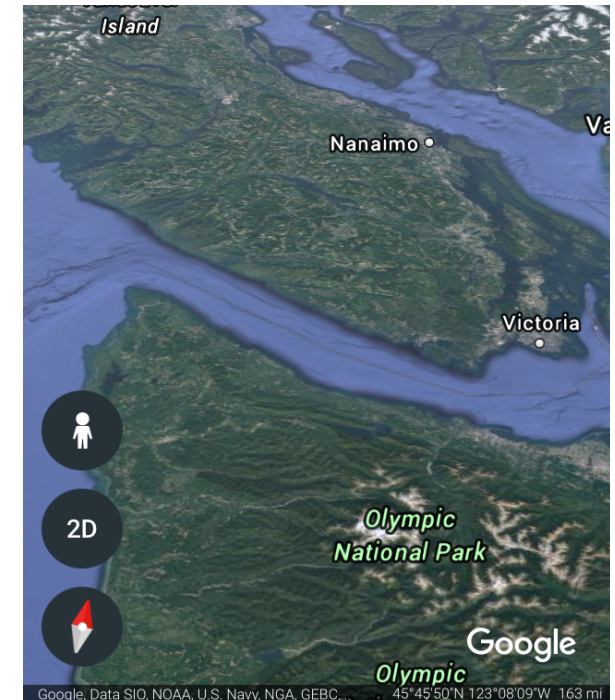


# Shakedown June 18 to July 3



## Leg 2 – San Diego > Victoria BS > Seattle

- Final systems groom
- New SIO Tech Training / Familiarization
- Ongoing Confluence documentation effort
- Set-up STARC equipment loaded in San Diego
  - Salinometers
  - Test pingers



# Cruise Planning



## Ongoing since Jan/Feb

- Monthly telecom for each mission
  - Action Item list
    - Google drive – living document
    - Open / Closed status
- UNOLS Cruise Planner
  - In development – customize for Healy
  - Requires review of questionnaire
- Icefloe.net
  - Moved USCG Policies to USCG.mil site

FUNDING No:		FULL PROJECT NAME: Healy cruise planning		PROJECT MANAGER: Dave Forcucci		TECHNOLOGY DEPLOYED:		
ACTION ITEM No.	DATE OPENED	DESCRIPTION	PRIORITY	RESPONSIBLE PARTY	DUE DATE	COMPLETION DATE	FOLLOW UP	STATUS
HLY1801-26	3/1/2018	provide CTD sensor list required	H	Science	5/1/2018		Duel oxygen sensors installed on CTD by Starc. PMEL bring back up MCL.	Closed
HLY1801-27	3/1/2018	send link to cruise plan so science personnel can track.		Science	5/15/2018		<a href="http://icefloe.net/forms/submit.php?recordId=1927">http://icefloe.net/forms/submit.php?recordId=1927</a>	Closed
HLY1801-28	3/29/2018	Mooring release cable adapter		Jeff	5/1/2018	5/15/2018	STARC and Jeff communicate, Brett needs to send photo	Open
HLY1801-29	3/29/2018	Foreign National Form	M	WHOI	8/1/2018		Have the form. Filling it out.	Closed

### WAGB20 USCGC Healy

Operator: US Coast Guard Owner: US Coast Guard

Administrator Tools Print

HLY18TB : Shakedown

Mobilize: Jun 11, 2018 (Mon) Seattle, WA  
Depart: Jun 18, 2018 (Mon)  
Return: Jul 03, 2018 (Tue)  
Demobilize: Jul 05, 2018 (Thu)

25 Days Total  
16 Days at Sea

You have 'CruiseAdmin' access to this cruise

Administrator access key: tqFvJkn76UG6FrZd\_AblMg

User access key: dbgsh9jtnUmCmgDFQFuRIA

You are permitted to view medical info

You are registered with the science party as a ChiefScientist

Your registration is complete

Invite someone to join this cruise Contact the USCGC Healy Website Feedback or Bug Report

Project Info Science Party Questionnaire Attachments Documents Hazardous Material Other

MENU Edit Project Info Add Announcement Help Print

Principal Investigator: Brett Hembrough, Scripps Institution of Oceanography  
bhembrough@ucsd.edu  
858-822-6912

Chief Scientist: Brett Hembrough, Scripps Institution of Oceanography  
bhembrough@ucsd.edu  
858-822-6912

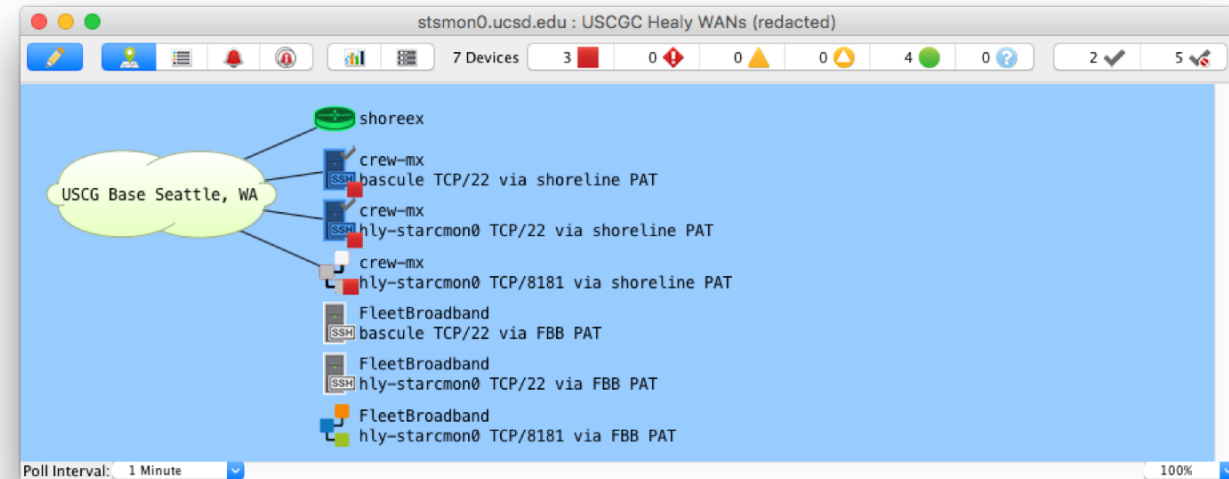


# Network Monitoring

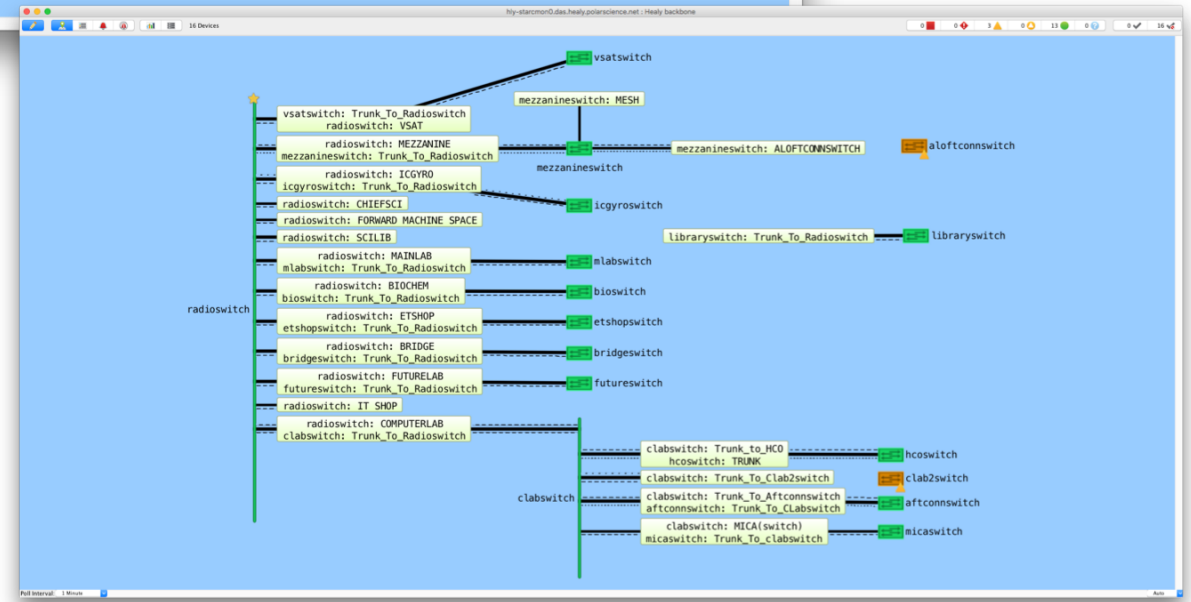
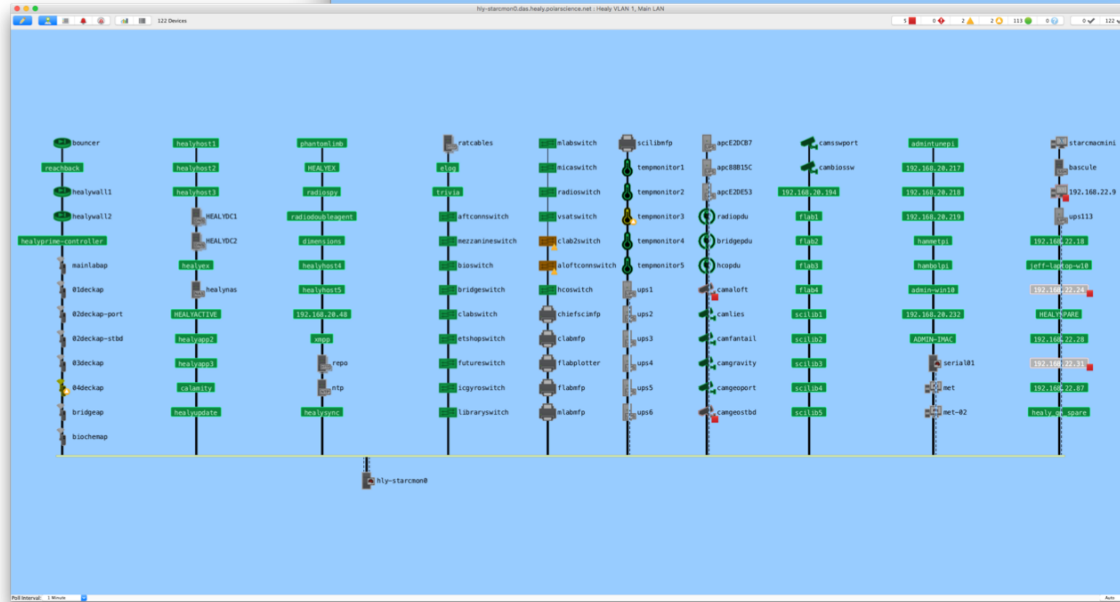
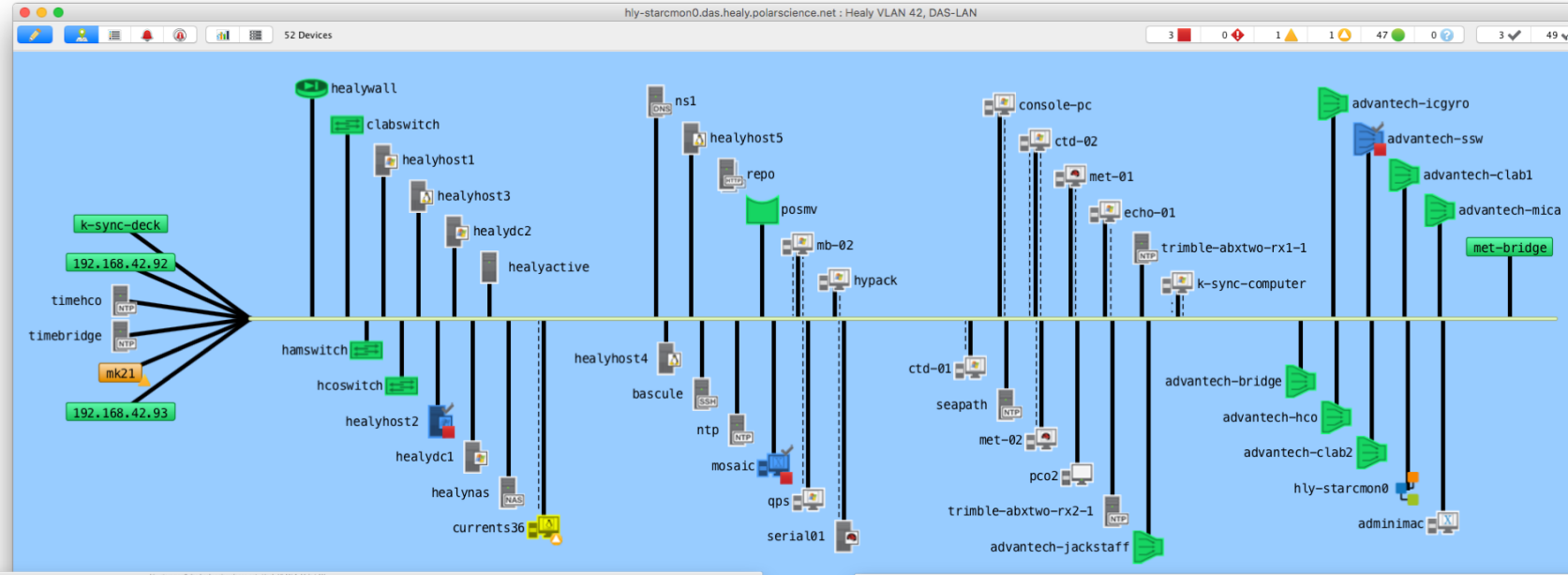


## Local and Remote Access to Network Performance

- Intermapper
  - Robotic Process Automation
  - Custom probes across network
- Trend Monitoring
  - Power consumption / UPS status
  - Environmental Sensing
- Alerts and early warnings
  - Hard drive disc usage
  - Preventative action by techs at sea



# Intermapper





# The End



# Thank you

# Questions ?