

# NSF Arctic Update



## Arctic Icebreaker Coordinating Committee

19-20 November 2015

Renée Crain

Arctic Research Support & Logistics Program

Geosciences Directorate (GEO)  
Division of Polar Programs (PLR)  
Arctic Sciences Section (ARC)

# NSF Arctic Update



NSF Director's site visit to Alaska

Budget outlook

Forum of Arctic Research Operators (FARO) – Will present icebreaker plans at March 12<sup>th</sup> meeting

Interagency Arctic Research Policy Committee (IARPC) – Initiated the IARPC Logistics Working Group

Arctic Policies: Code of Conduct, Risk Management & Physical Qualifications



NSF site visit to the SIKULIAQ. L-R: Renee Crain, Jim Olds, Kelly Falkner, France Córdova, Eric Saltzman, Roger Wakimoto

# Supporting a Culture of Safety in Arctic Science

*Workshop Report: Arctic Field Safety Risk Management*




Renée Crain, Kristina Creek, and Helen Wiggins, Editors



## Report from the February 2014 Workshop

<http://rslriskworkshop.com/>

**NSF Arctic Field Safety Risk Management Workshop**  
ARLINGTON, VIRGINIA | 4 - 5 FEBRUARY 2014



**Workshop Report Available**

**Supporting a Culture of Safety in Arctic Science**  
Click on the cover image to download a copy of the report (3.7 MB).

**About the ARM Workshop**  
The National Science Foundation's Directorate for Geosciences / Division of Polar Programs Arctic Research Support & Logistics (ARSL) Program sponsored the Arctic Field Safety Risk Management Workshop 4-5 February, 2014 at the Arlington Hilton Hotel, in Arlington, Virginia.


**Objective:** Explore NSF's arctic program risk management issues to improve practices, build communication, and reduce risk.

**Goals**

- Discuss current policies and procedures to improve practices, communication, etc.
- Explore other program and agency field risk management approaches and programs
- Increase research community engagement - including at the research institution level

**WORKSHOP INFORMATION**

- Workshop Report Available
- About the Workshop
- RSVP
- Agenda
- Venue & Lodging
- Attendees
- Homework
- Rescues
- Workshop Products
- Feedback

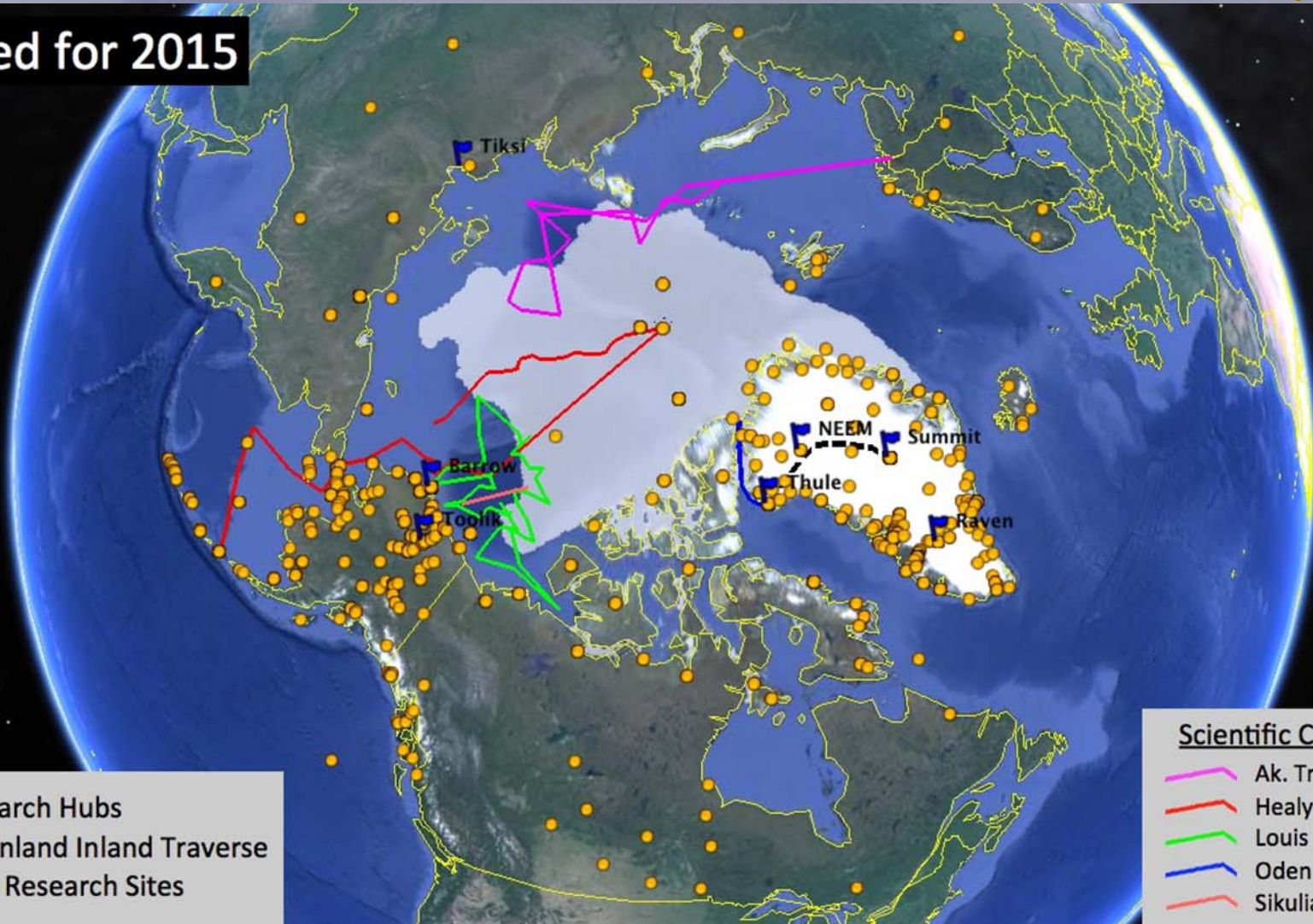




# 2015 Field Season



Planned for 2015



- Research Hubs
- Greenland Inland Traverse
- Field Research Sites

- Scientific Cruises:
- Ak. Tryoshnikov
  - Healy
  - Louis S. St-Laurent
  - Oden
  - Sikuliaq

# NSF and ODEN



ODEN workshop March 30-April 1

<http://polar.se/dok/oden-arctic-report-final.pdf>

NSF – Swedish Polar Research Secretariat

2015 Cruise to the Petermann Glacier

2018 Cruise – Yet to be defined

**US-Swedish Planning Workshop on  
Joint Arctic Research using the I/B Oden**



**Workshop Report**

**Stora Brännbo Hotel & Conference Center, Sigtuna Sweden**

**March 30 - April 1, 2015**